

SUMMER 1983

# WILKES COLLEGE QUARTERLY







## SUMMER 1983

Volume 6, Number 3

### editor

Randall J. Xenakis

### associate editor/editon editor

Jane Manganella

### alumnus editor

Richard Raspen '67

### contributing staff

Betsy Bell Condron

Philip Wingert

### photographer

Donald D. Carey

### art directors

Jon Schaffer

Lois Pluskey '78

### The WILKES COLLEGE

QUARTERLY is published quarterly by the Wilkes College Public Relations Office and the Alumni Relations Office.

### ◁ MORRIS KANTOR

*Farewell to Union Square*  
courtesy of Newark Museum of Art  
Newark, NJ

# WILKES COLLEGE QUARTERLY

### On the Cover

#### The Little Coat and Fur Shop (1931)

by Kenneth Hayes Miller

Miller was born March 11, 1876, in Oneida, N.Y. He was fairly well established as an artist and a teacher by 1930. Extremely well thought of as a teacher of art, he was influenced by Renaissance ideals of beauty and transferred those ideals to his students. His work epitomized art during the period between 1928 and 1933.



### New Beginnings at Sordoni Art Gallery

by: Jane Manganella

8

### Career in Allied Health Professions

by: Randy Xenakis

10

### Remodeled Solid State Laboratory

14

### Through the Years

by: Jane Manganella

15

College Chronicle — 4  
Gallery — 12

Sports Update — 11  
Alumnus — Insert

## BOARD OF TRUSTEES

### OFFICERS

William L. Conyngham, *Chairman*  
Richard M. Ross, Jr., *Vice Chairman*  
William J. Umphred '52, *Treasurer*  
Esther B. Davidowitz, *Secretary*

James A. Adonizio  
Benjamin Badman '41  
Frank C. Carlucci  
Patricia S. Davies  
Alexandra F. Ehret  
W. Carey Evans '41  
James F. Ferris '56

David C. Hall  
Frank M. Henry  
Andrew Hourigan, Jr.  
John J. Karakash  
Richard Maslow  
Constance Mayock  
Frank H. Menaker, Jr. '62  
Gerald A. Moffatt '63  
Richard L. Pearsall  
William A. Perlmut '51  
Joseph J. Pinola '49  
Kenneth E. Quickel, Jr.  
William F. Raub '61

Mary B. Rhodes '77  
Arnold S. Rifkin  
Harold J. Rose, Jr.  
Eugene Roth '57  
Joseph J. Savitz '48  
Ronald W. Simms '60  
Elizabeth A. Slaughter '68  
Stephen Sordoni  
Luciana Suraci  
Stephen A. VanDyck '66  
Norman E. Weiss  
Joseph A. Wiendl

**PRESIDENT**  
Robert S. Capin '50

**TRUSTEE EMERITI**  
Donald F. Carpenter  
Martha S. Diener  
Eloise W. Ehret  
Julia T. Faber  
Alan M. Glover  
Thomas H. Kiley  
Charles H. Miner, Jr.  
Max Rosenn  
Louis Shaffer



# college chronicle



## ALUMNI REFERRAL PROGRAM PROVES SUCCESSFUL

During the last four years, the Alumni Referral Program (ARP) has grown from a modest beginning to a successful part of overall recruiting efforts in the Admissions Office. Each academic year since 1979, the Office of Admissions has asked the Alumni for their assistance in identifying and referring outstanding high school students who would be interested in Wilkes College.

Because of these valuable contacts, we are able to acquaint many students, who would not otherwise know about Wilkes, with our programs. Each referred student is sent an information packet and an invitation to tour our campus and meet with admissions representatives and faculty.

According to our current records, 81 applications from the 630 referrals received for the class entering last fall were processed.

Thirty-four of the 81 who applied for admission enrolled at the College for the fall of 1982. This statistic reflects a 42 percent yield from the time of application to the time of enrollment. This is considered by admissions professionals nationally to be an excellent indicator of alumni support.

This year's campaign is currently underway, and referral cards have already been received by ARP members. Any contacts, whether they are immediate family members, close friends, or even outstanding students cited in local newspapers, represent possible Wilkes referrals.

Recently, the second phase of ARP was initiated. Included in this phase is the selection and preparation of alumni to attend college information programs where they can meet with interested parents, students, and guidance counselors. As the Admissions Office continually seeks to expand its recruitment area, the need for alumni support in the recruitment of prospective students increases each year. The ARP seeks to meet the need for such expansion.

In the spring of 1982, a small group of interested alumni was invited to participate in the second phase of ARP. Then, in September, a training session was held for this group. Included in the on-campus seminar were financial aid availability and programs, admissions

criteria, and student services and activities available. The day-long session ended with the assignment of fall recruiting events for each ARP member.

Now that the second phase is in effect, Barbara Welch, assistant to the Dean of Admissions, and ARP coordinator, is looking forward to implementing phase three of the program which will be

centered around receptions in various geographic areas, giving students in that area the opportunity to meet with Wilkes alumni.

Interested alumni who wish to participate in any phase of the ARP are encouraged to contact Mrs. Welch directly for further details.

## WILKES MINDPOWER CAMPAIGN TOPS \$400,000 SCHOLARSHIP GOAL



Shown are, from left: Dr. Thomas Kelly, Trethaway, Scovell, Capin and Dr. James Aitman.

With the continued support of alumni, members of the community and corporate sector, Wilkes College announced recently that it has received a total of \$428,903 toward its 1983 annual scholarship fund-raising campaign. Revolving around the theme, "Providing Mindpower Through Five Decades . . . and Beyond," the total scholarship money received surpasses the original campaign goal of \$400,000 by 7.2%.

"It is very reassuring to know that quality education remains a high priority with our alumni and friends in the community," said Wilkes President Robert S. Capin in announcing the campaign success to members of the workforce at a recent luncheon.

"This being our 50th anniversary year, I am especially pleased to report our success in raising these needed scholarship funds for our students. Friends and alumni of Wilkes College, who also made it possible for us to construct our new residence hall earlier this year, have responded magnificently

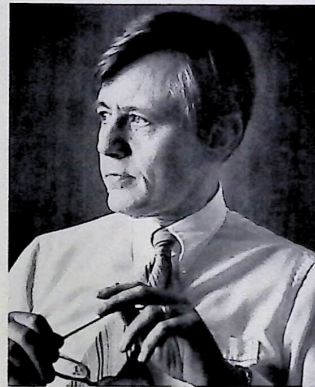
to our challenge and we are indeed grateful."

Frear Scovell, retired Executive Senior Vice-President of First Eastern Bank and chairman of the Wilkes scholarship campaign effort, said, "The support of this campaign workforce and the community has helped to insure that Wilkes College will continue to provide our area and, indeed the nation, with tomorrow's leaders and scholars."

Both Capin and Scovell acknowledged the dedicated and unselfish efforts of the 1983 campaign workforce which consisted of more than 200 volunteers from the college and the community. In addition, Capin praised the work of the campaign leadership including Mr. William Conyngham, chairman of the board of trustees; Mr. Eugene Roth, chairman of the development committee; Mr. Frear Scovell, chairman of the 1983 annual campaign; Mr. Harold Trethaway, vice-chairman of the annual drive; and division leaders Bob Edgerton, Beverly Hiscoc, Isadore Goldberg, Tom Kiley and Earl Macarty.

## BUCKNELL UNIVERSITY PRESIDENT WILL ADDRESS WILKES CLASS OF 1983

Dr. George Dennis O'Brien, president of Bucknell University in Lewisburg, will address the Wilkes College Class of 1983 during commencement ceremonies scheduled for Sunday, May 22, at Ralston Field. O'Brien, now in his seventh year as Bucknell president, will help culminate the year-long 50th



anniversary celebration of Wilkes College, founded as Bucknell University Junior College in 1933.

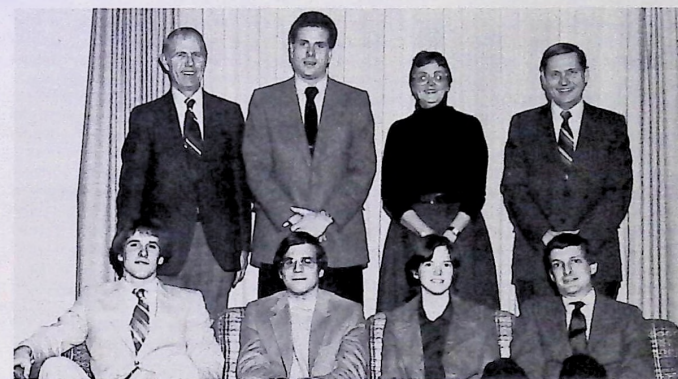
A native of Chicago, O'Brien received his A.B. degree in English as a cum laude graduate of Yale (1952) prior to receiving his Ph.D. in Philosophy from the University of Chicago (1961). The 52-year-old educator was the recipient of a Carnegie Research Fellowship in university teaching (1957) and was a Fellow, American Council of Learned Societies (1971-72).

O'Brien currently serves at the twelfth president of the 137-year-old institution and holds the academic rank of Professor of Philosophy. Prior to joining Bucknell, O'Brien served in several capacities at Middlebury College including Professor of Philosophy, Dean of Men, Dean of the College, Acting Dean of the Faculty, and, in 1975, as Dean of the Faculty. From 1961-65 he served as Assistant Dean of the College at Princeton University.

Author of numerous articles including "Philosophy in the Twentieth Century" and "New Friends in Religion", O'Brien has delivered several commencement addresses at numerous institutions which include Mercy Hospital of Chicago (1979); Shady Side Academy, Pittsburgh (1978); and Marywood College (1971).

O'Brien delivered a lecture at Wilkes last fall as part of the 50th Anniversary Lecture Series and has written a book, *Hegel on Reason in History: A Contemporary Interpretation*, published in 1975 by the University of Chicago Press.

## WILKES COLLEGE NATIONAL HONOR SOCIETY IN HISTORY WELCOMES NEW MEMBERS



The Wilkes College Chapter of the National History Honor Society, Phi Alpha Theta, met recently to hold its annual initiation of new members.

Phi Alpha Theta is a professional organization composed of both professors and students, whose main goal is the study and promotion of the study of history through research, teaching, and the exchange of information and theory among historians.

Dr. James Rodechko, chairman of the History Department, presided over the

ceremony welcoming the new members to Omega Iota, the local chapter.

Shown prior to the ceremony are members of the faculty and administration with new members. From left, seated: Christopher Henry, Fred Krome, Meg Hall and Dr. Joel Berlatsky.

Standing, from left: Dean of Academic Affairs Dr. Gerald Hartdagen, Craig Mailen, Lillian Cohen and Dr. Rodechko.

## WILKES COLLEGE INITIATES SIX FULL-TUITION "TRUSTEES' SCHOLARSHIPS"



Wilkes College Dean of Admissions Dr. Gerald Wuori has announced that six new Trustees Scholarships will be awarded to qualified students before the end of the academic year.

The full-tuition, four-year scholarships will be given to incoming freshmen through the Admissions Office. Recipients will be chosen by the

Admissions Committee for academic excellence. They will be required to maintain dean's list status throughout their four years at Wilkes.

Shown finalizing scholarship criteria are members of the Admissions Committee, from left: Dr. Wuori, Committee Chairman Dr. John Koch, and Dr. Michael Case.



## HEALTH SCIENCES SYMPOSIUM ADDRESSES POLITICS OF MEDICINE

The question "Is Health Care Healthy?" was addressed by experts in the fields of medicine, philosophy and extramural research and training at the Wilkes College Health Sciences Symposium held recently on campus.

Distinguished guests from medical institutions throughout the country lectured. Dr. Edmund Pellegrino, M.D., Georgetown University; Sheldon Cohen, M.D., National Institutes of Health, Washington, D.C.; Samuel Gorovitz, Ph.D., University of Maryland; Catherine DeAngelis, M.D., Johns Hopkins Medical School; and William Raub, M.D., National Institutes of Health, were among those who spoke to the capacity audience.

Dr. Cohen served as moderator for the program which covered the broad scope of the theme, including the delivery system, finances, technology, ethics, politics and the allocation of dollars.

Serving on the coordinating committee for the 50th anniversary event were: Dr. Ralph Rozelle, dean of health sciences; Dr. Lester Turoczi, chairman, Biology Department; Theresa Grabo, Nursing Department; John Chwalek, coordinator, 50th anniversary programs; and Dr. Thomas Kelly, dean of external affairs.

## WILKES COLLEGE HOSTS EASTERN COLLEGES SCIENCE CONFERENCE

Research students in life, physical, social sciences and mathematics were given the opportunity to present research papers before peers from various colleges and universities recently when Wilkes hosted the 1983 Eastern College Science Conference.

Dr. Lester Turoczi, chairman of the Biology Department, acted as host and coordinator for the event. The format for the conference followed the lines of a professional scientific meeting in an effort to encourage student participation in the scientific enterprise. The format also gave students some insight into the type of exchange which occurs at scientific meetings.

Dr. Doris Bartuska, an alumna of Wilkes and currently head of the Department of Endocrinology at the Medical College of Pennsylvania, the opening lecture for the conference. She is the former Doris Gorka, a 1946, graduate.

## NURSING DEPARTMENT SPONSORS TWO WORKSHOPS

Two professional workshops were presented by the Department of Nursing during the spring semester at Wilkes. The first, entitled, "Nursing is Looking Up: Meeting the Spiritual Needs in Nursing," had Sharon Fish, M.S.N., author of "Spiritual Care, the Nurse's Role," as workshop leader.

Vicki Lachman, R.N., M.S.N., was featured speaker for the second workshop entitled, "Burnout and What You Can Do About It." This day-long seminar covered all aspects of stress management.

Shown are members of the coordinating committee, from left: Pat Ashton Sweeney, Diane Felice, Ruth McHenry and Patricia Zong.

## "KINNEY'S KIDS" CLINCH STATE TITLE IN DEBATE

For the first time in nearly three decades, the Wilkes College Debate Union has won the right to call itself the Number One Debate Team in the state.

Recently at the State Championship Tournament sponsored by the

Pennsylvania Forensic Association, "Kinney's Kids" took top honors against such powerhouses as: Duquesne University, the University of Pennsylvania, and Penn State, to win the title "Best in the State."

Donna O'Toole and Walter Shonfield were a powerful twosome with O'Toole winning the third-place best speaker in the entire competition and Shonfield winning the Outstanding Debate Speaker for the tournament. Shonfield also won second place in the state for extemporaneous speaking.

Not since 1954, has Wilkes been holder of the state title. According to Debate Coach Dr. Bradford Kinney, "The state award has been a long time coming to Wilkes. I am really pleased that after so many years of trying, we secured this title during the College's

## WILKES COLLEGE STUDENTS NAMED TO WHO'S WHO



The 1983 edition of *Who's Who Among Students in American Colleges and Universities* will carry the names of thirty students from Wilkes College who have been selected as being among the country's most outstanding campus leaders.

Campus nominating leaders and editors of the annual directory have included the names of these students based on academic achievement, service to the community, leadership in extracurricular activities and future potential.

Outstanding students have been honored in the directory since its introduction in 1934 and current selected students join an elite group from more than 1,300 institutions of higher learning in 50 states, the District of Columbia and several foreign countries.

Wilkes students selected are shown, from left: row one, Beverly Perry, Jim

Thorpe; Marge LeBlanc, Pottsville; Vicki Smith, Cliffwood Beach, N.J.; Leigh Major, Kearny, N.J.; Stacey Lipman, White Plains, N.Y.; and Nancy Bowanko, Hudson.

Row two, from left: Liz Perich, Edwinstown; Diane Hall, Ephrata; Mary Ellen Judge, Swoyersville; JoAnn Magers, Springfield, N.J.; Terry Shemo, Wyoming; Elizabeth Keller, Glen Ridge, N.J.

Row three, from left: Amy Elias, Laffin; Elaine Kerchusky, Philadelphia; Stacy Keeley, Mt. Holly, N.J.; Joanne Rice, Chester, N.J.; Stephen Thomas, York; Sandra Bartels, Tunkhannock.

Row four, from left: Ellen van Ripper, Denville, N.J.; David Yaron, Peckville; Mary Kutz, Dallas; Bill Lourie, Mt. Holly, N.J.; Keith Sands, Staten Island, N.Y.; Bart Matson, Canton, and Darrell Lewis, Wapwallopen.

50th anniversary year. I can't think of a nicer gift to give the institution."

"Kinney's Kids" reached another milestone in this 50th anniversary year — they reached the 500 mark for trophies won in competition.



## EDWIN NEWMAN IS GUEST SPEAKER FOR ROSENEN LECTURE SERIES

Edwin Newman, veteran news correspondent for the National Broadcasting Company (NBC), was the featured speaker for the second Rosenn Lecture Series in Law and the Humanities, held at the Center for the Performing Arts.

With 31 years of experience as an NBC correspondent, there is very little that Newman has not done in the field of broadcast journalism.

Whether reporting from a foreign country, anchoring documentaries that span an entire evening of prime-time television, doing instant news specials devoted to late-breaking news events, or delivering a weekly essay on the *TODAY* program, Newman has consistently demonstrated his versatility as a journalist.

In addition to anchoring fast-breaking stories, such as the attempted assassination of President Reagan on March 30, 1981, he has earned the coveted Peabody Award for his radio commentaries in 1967. In 1975 Newman was granted the first exclusive interview ever given a journalist by the Emperor of Japan, and a year later he was moderator of the Ford-Carter presidential debate.

The Rosenn Lecture Series was established in 1981 by the family and friends of the Honorable Max Rosenn, Judge of the U.S. Court of Appeals. Last year, the initial lecture in the series was presented by Pulitzer Prize-winner Anthony Lewis, columnist for the *New York Times*.

## FIVE GRADUATE ASSISTANTS NEAR COMPLETION OF DUTIES IN WILKES COLLEGE COMMERCE AND FINANCE DEPARTMENT

Five graduate assistants in the Wilkes College Commerce and Finance Department are nearing completion of duties which gave them practical experience while allowing them to earn graduate credits toward the M.B.A. degree.

Employed for the academic year 1982-83, the assistants taught undergraduate business courses; graded and proctored exams; worked in the teaching laboratories; and assisted in all areas of the Business Department.

Two new areas were opened in the program this year. Assistants in Accounting and Public Relations were added. Thomas Alexander, Wilkes-Barre, taught undergraduate accounting labs

and tutored accounting students. He also assisted in the Volunteer Income Tax Assistance Program (VITA) which trains students to help members of the community file income tax statements.

Jessica Morgan, Dallas, filled the Public Relations assistantship by serving as a liaison between the Commerce and Finance Department and the College's Public Relations Office. She also aided in preparation of a brochure for the Department.

Shown are those participating as Graduate Assistants: from left, seated: Ms. Morgan, Mr. Alexander, and Beth Ashton, Wilkes-Barre.

Standing, from left: Mary Beth Wassil, Hazleton; and Maurita Gries, Dallas.



## ATTENTION PARENTS!

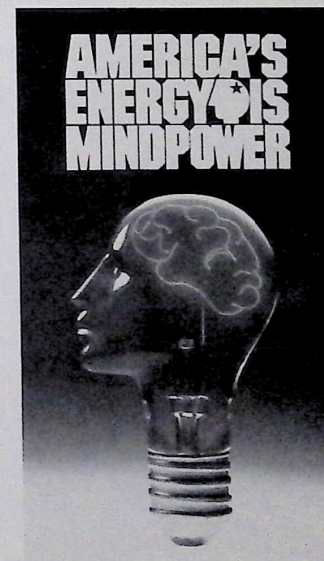
If this magazine is addressed to your son or daughter who no longer maintains a permanent address at your home, please clip off the address label on back cover and return it with the correct address to the Alumni Office at Wilkes College. Thank you for helping us update our records.

Wilkes College admits students of any race, color and national or ethnic origin.

## THE WILKES COLLEGE CONNECTION

FOR 24-HOUR INFORMATION ON WILKES COLLEGE EVENTS

717-826-1135





# New Beginnings at Sordoni Art Gallery

By: Jane Mangarella

September of 1982 was a month of beginnings for Judith O'Toole. She and her husband Kevin, a sculptor, moved from State College to Wilkes-Barre; they bought a home (and studio for Kevin); they moved in and immediately started to renovate and . . . in addition to all of this, Judith started her new job as Director of Wilkes' Sordoni Art Gallery.

She remembers it was "a little crazy, we bought an old house, with all this potential, but which hadn't been totally rehabilitated since the Agnes flood. There was crumbling plaster everywhere. I wore the same suit to work almost every day because I didn't want to unpack until it was safe." In spite of all the inconvenience, Judy said it was "the house we wanted, it was close to campus, and most important, it had a two-car garage that Kevin could transform into a studio."

Time passed quickly for the new director. In just eight months, she handled seven exhibitions, as many receptions, worked with the advisory board to the Gallery, and is currently doing a major catalog of the paintings of Pennsylvania artist Severin Roesen. "I've been busy, but I've enjoyed it. When I arrived in September, good relationships with major museums and galleries were already established, which is a nice situation to find in a new position. I'm very excited, too, about the coming year. We're already working on a major exhibition (Carl Sprinchorn), scheduled to open in October."

Challenge is something Judy seems to enjoy. This is obvious when one looks at her resumé and considers the fact that she is not yet thirty years of age. Judy graduated from the University of Minnesota with a B.A. in Art History in 1975. From 1976 until 1978, she taught at Penn State's



**"This beautiful, distinctive curve that was the clown popped right off the paper at me."**

main campus and managed, during the summer of 1977, to spend three months in Paris in the University's Graduate Study Abroad Program.

From 1978 until 1982, she was Research and Cultural Assistant to the Penn State Museum of Art. While serving in that capacity, she was project director for documentation on the Roesen paintings, and somewhere between 1980 and 1981, she was awarded a grant from the Institute of Museum Services (Department of Education) to prepare research on the University's permanent collection.

We asked Judy how she and Kevin had time to meet and marry. "It was really very convenient," she said smiling,

"Kevin taught in the same department, we courted at lunch." She also added that Kevin, who works in his studio all day every day (works are primarily done in wood, with painted surfaces), is not at all impressed with her list of achievements. "In fact, he thinks I'm not ambitious enough about my writing."

Reflecting on her accomplishments, she said, "To me, art is not really work as much as it is just part of my life. My parents would save all year so that we could visit every museum and gallery possible when we went on family vacations. My father teaches American Studies at the University of Illinois and would always offer comment or history on works as we toured. It was never a lecture situation, just interesting facts. Even as a child I was very comfortable with art, and very interested in it."

Another of the things that happened last September was the publishing of an article by Judy for *The Bulletin of the Cleveland Museum of Art*, entitled "Ibels and Seurat: An Attribution Confirmed." This, though, was an end rather than a beginning for her. It was the culmination of a nine-month search by Judy to prove that a charcoal drawing, "The Circus," which had been attributed to Georges Seurat (1859-1891) was really the work of Henri-Gabriel Ibels (1867-1936).

"I'd chosen Ibels as the subject for my Master's thesis, and the research for that had me looking through catalogs for months; my mind was really saturated with this fellow's images." One of her favorite figures was a clown from a color lithograph by Ibels called "Au Cirque." She continued, "One day my advisor, George Mauner, called my attention to a copy of Seurat's 'The Circus,' which had been used for the cover of a catalog to open a new wing at the Cleveland Museum. This beautiful, distinctive curve that was the clown popped right off the paper at me. It had to be the Ibels' clown from 'Au Cirque'."

Further investigation led to the fact that the attribution to Seurat had been questioned before, but no one had done any research to prove that it was not, in fact, a

# WILKES COLLEGE

1933 1983

WILKES COLLEGE • WILKES-BARRE • PENNSYLVANIA 18766

VOL. 2, NO. 3

The following Class Notes were compiled by the Office of Alumni Relations from information received through March 31, 1983; announcements of such events as births, deaths, marriages, earning of degrees, address or employment changes should be sent to the Alumni Office, Wilkes College, P.O. Box 111, Wilkes-Barre, PA 18766.

tired from 8 years of teaching to raise children, Lisa, 10, and Neil, 6.

JAMES NEDDOFF passed away recently at the Johns Hopkins Oncology Center, Baltimore, MD. James was employed as Superintendent of Twin Valley School District, Morgantown, Berks County. He is survived by his wife Linda and two children. Our condolences are expressed to his family.

New York with his wife Elisea and their two children.

SHARON TELBAN, Assistant to the Chairperson and an Assistant Professor at Wilkes College, expects to receive her D.N.Sc. from the University of Pennsylvania in 1985. Her specialty is Higher Education Administration in Nursing, and she is currently involved in studying nursing models,

IAHN) ZIKOR birth of their 6. 1983. The congratulations,

cently received drew resides in

seen appointed al of Holabird County Public D. Richard re-wife and two

ly married to d by Wyoming le resides in

s proud to an-chael, on De-band Marc re-

To: James F. Ferris  
President  
Wilkes College Alumni Association

Please cast my ballot as follows for the preceding Amendments to the Constitution of the Wilkes College Alumni Association:

- ☐ Amendments Approved
- ☐ Amendments Not Approved

Signature: \_\_\_\_\_ Class of \_\_\_\_\_

(An alumna married to an alumnus may submit a facsimile ballot, providing that both husband's and wife's ballots are returned in the same envelope.)

Detach at perforation and mail

ical Center, Wilkes-Barre. Ben is employed as a professor of English at Wilkes College. Congratulations, Lois and Ben.

1959

GRACE A. (VIPONDI) REISSER has joined the faculty of The Berkeley School of Woodbridge as an instructor in shorthand, typewriting and communications. Joyce resides in Bound Brook with her husband Bob and four children.

CARL V. ZOOLKOSKI has accepted a new position with E.F. Hutton and Company, Inc., as a Certified Financial Planner. Carl resides in Mountain-top with his wife Betsy and two children.

1961

F. ROBERT BOBKOWSKI '61 and CAROLYN (CARSON) BOBKOWSKI '64 have recently moved to 341 Cypress Landing Drive, Longwood, Florida 32750. Bob is National Sales Manager for a Division of Brunswick Corporation. Carolyn is re-

ELLEN (FEINSTEIN) KRUEGER and her husband Allen have a new addition to their family. Mat Steven was born January 1, 1983, and joins a sister Lauren. Ellen runs a freelance advertising/public relations business in San Antonio, Texas.

G. MATT MORAN has accepted a new position with RTP Company as Eastern Regional Manager in Winona, MN.

1969

BERNADINE E. ADONIZIO recently married Blucher S. Tharp in Philadelphia. Bernadine is a psychiatrist in private practice. The couple will reside in Society Hill, Philadelphia.

CHRISTINE (FISHER) BIRKENHEAD recently accepted a new position with Nesbitt Hospital Laboratory as General Laboratory Supervisor. Christine also has a new addition to her family, Victoria, who was born on January 28, 1983.

BOB BURNAT recently received an MBA in Finance from Fordham University. Bob resides in

DALE RAYMOND TABOR recently married Marcella Ann Trybus. Dale is currently a post-doctoral immunology research fellow in the Department of Medicine, Division of Infectious Diseases at Hahnemann. The couple resides in Philadelphia.

1973

JIM THOMAS and his wife Joanne are proud to announce the birth of their first child, Brian Anthony, on October 24, 1982. Jim is Director of the Columbia County Housing Authority. The family resides at 28 E. Main Street, Wanamie, PA.

BRUCE BALLIET has accepted a position with Atari Incorporated in the Consumer Electronics Division as Product Merchandiser. Bruce resides in Tampa, FL.

JOSEPH JOHN YURKO and DIANNE CLAIRE MITAL '77 have recently been married. Dianne is employed as a teacher at Holy Name School, Forty Fort. Joe is employed as a teacher by the Westwood Regional School District, Westwood, NJ. The couple is residing in Woodbridge, NJ.



## New Beginnings at Sordoni Art Gallery

By: Jane Manganello

September of 1982 was a month of beginnings for Judith O'Toole. She and her husband Kevin, a sculptor, moved from State College to Wilkes-Barre; they bought a home (and studio for Kevin); they moved in and immediately started to renovate and . . . in addition to all of this, Judith started her new job as Director of Wilkes' Sordoni Art Gallery.

She remembers it was "a little crazy, we bought an old house, with all this potential, but which hadn't been totally rehabilitated since the Agnes flood. There was crumbling plaster everywhere. I wore the same suit to work almost every day because I didn't want to unpack until it was safe." In spite of all the inconvenience, Judy said it was "the house we wanted, it was close to campus, and most important, it had a two-car garage that Kevin could transform into a studio."

Time passed quickly for the new director. In just eight months, she handled seven exhibitions, as many receptions, worked with the advisory board to the Gallery, and is currently doing a major catalog of the paintings of Pennsylvania artist Severin Roesen. "I've been busy, but I've enjoyed it. When I arrived in September, good relationships with major museums and galleries were already established, which is a nice situation to find in a new position. I'm very excited, too, about the coming year. We're already working on a major exhibition (Carl Sprinchorn), scheduled to open in October."

Challenge is something Judy seems to enjoy. This is obvious when one looks at her resumé and considers the fact that she is not yet thirty years of age. Judy graduated from the University of Minnesota with a B.A. in Art History in 1975. From 1976 until 1978, she taught at Penn State's



**"This beautiful, distinctive curve that was the clown popped right off the paper at me."**

main campus and managed, during the summer of 1977, to spend three months in Paris in the University's Graduate Study Abroad Program.

From 1978 until 1982, she was Research and Cultural Assistant to the Penn State Museum of Art. While serving in that capacity, she was project director for documentation on the Roesen paintings, and somewhere between 1980 and 1981, she was awarded a grant from the Institute of Museum Services (Department of Education) to prepare research on the University's permanent collection.

We asked Judy how she and Kevin had time to meet and marry. "It was really very convenient," she said smiling,

"Kevin taught in the same department, we courted at lunch." She also added that Kevin, who works in his studio all day every day (works are primarily done in wood, with painted surfaces), is not at all impressed with her list of achievements. "In fact, he thinks I'm not ambitious enough about my writing."

Reflecting on her accomplishments, she said, "To me, art is not really work as much as it is just part of my life. My parents would save all year so that we could visit every museum and gallery possible when we went on family vacations. My father teaches American Studies at the University of Illinois and would always offer comment or history on works as we toured. It was never a lecture situation, just interesting facts. Even as a child I was very comfortable with art, and very interested in it."

Another of the things that happened last September was the publishing of an article by Judy for *The Bulletin of the Cleveland Museum of Art*, entitled "Ibels and Seurat: An Attribution Confirmed." This, though, was an end rather than a beginning for her. It was the culmination of a nine-month search by Judy to prove that a charcoal drawing, "The Circus," which had been attributed to Georges Seurat (1859-1891) was really the work of Henri-Gabriel Ibels (1867-1936).

"I'd chosen Ibels as the subject for my Master's thesis, and the research for that had me looking through catalogs for months; my mind was really saturated with this fellow's images." One of her favorite figures was a clown from a color lithograph by Ibels called "Au Cirque." She continued, "One day my advisor, George Mauner, called my attention to a copy of Seurat's 'The Circus,' which had been used for the cover of a catalog to open a new wing at the Cleveland Museum. This beautiful, distinctive curve that was the clown popped right off the paper at me. It had to be the Ibels' clown from 'Au Cirque'."

Further investigation led to the fact that the attribution to Seurat had been questioned before, but no one had done any research to prove that it was not, in fact, a

# WILKES COLLEGE

1933 1983

WILKES COLLEGE • WILKES-BARRE • PENNSYLVANIA 18766

VOL. 2, NO. 3

*The following Class Notes were compiled by the Office of Alumni Relations from information received through March 31, 1983; announcements of such events as births, deaths, marriages, earning of degrees, address or employment changes should be sent to the Alumni Office, Wilkes College, P.O. Box 111, Wilkes-Barre, PA 18766.*

### 1938

STANLEY CALDWELL THOMAS died December 1, 1982, at the age of 66. He resided in Wilmington, DE. Our condolences are expressed to his family.

### 1950

TED WOLFE died November 3, 1982, in Mt. Diablo Hospital, Concord, California. He is survived by his wife Lorraine and two sons. He was employed as West Coast Director of Labor Relations and Personnel with American Bank Stationery.

### 1953

ANTHONY P. GIUSTI was recently appointed to Division Controller/Manager-Administration, Steuben Glass. Anthony resides in Elmira, NY.

SANDOR YELEN was elected to serve on the executive committee of the Board of Trustees at The Dickinson School of Law in Carlisle. Sandor and his wife Janice and their three children reside in Kingston, PA.

### 1955

DR. BENJAMIN FIESTER '55 and LOIS STROBEL '80 were married recently in Church of Christ Uniting, Kingston, PA. Lois is employed as a psychiatric nurse at the Veteran's Administration Medical Center, Wilkes-Barre. Ben is employed as a professor of English at Wilkes College. Congratulations, Lois and Ben.

### 1959

GRACE A. (VIPOND) REISSER has joined the faculty of The Berkeley School of Woodbridge as an instructor in shorthand, typewriting and communications. Joyce resides in Bound Brook with her husband Bob and four children.

CARL V. ZOOLKOSKI has accepted a new position with E.F. Hutton and Company, Inc., as a Certified Financial Planner. Carl resides in Mountain-top with his wife Betsy and two children.

### 1961

F. ROBERT BOBKOWSKI '61 and CAROLYN (CARSON) BOBKOWSKI '64 have recently moved to 341 Cypress Landing Drive, Longwood, Florida 32750. Bob is National Sales Manager for a Division of Brunswick Corporation. Carolyn is re-

tired from 8 years of teaching to raise children. Lisa, 10, and Neil, 6.

JAMES NEDDOFF passed away recently at the Johns Hopkins Oncology Center, Baltimore, MD. James was employed as Superintendent of Twin Valley School District, Morgantown, Berks County. He is survived by his wife Linda and two children. Our condolences are expressed to his family.

### 1965

ANITA (MINELLI) SALERNO and her husband Anthony are proud to announce the birth of their son, Christopher John, on November 23, 1982. The family resides in Old Forge, PA. Congratulations, Anita and Anthony.

### 1967

DR. JOSEPH I. F. JERRYSTONE was recently awarded a fellowship in the Academy of General Dentistry at its 30th annual meeting held recently in Boston, Mass. Dr. Jerrystone and his wife Carol, along with their three children, reside in Kingston, PA. His office is located in Plymouth, PA.

### 1968

CEIL (ROSEN) ARBETMAN has a new position as a substitute teacher in Lancaster. She also owns her own Designer Clothing Shop "Tracy's." Ceil and her husband Bob reside in Lancaster with their daughter Traci.

ROGER D. BREWER is a Commander with the U.S. Navy, stationed in Winter Harbor, ME.

KATHERINE (SMITH) CAMPBELL and her husband Robert are proud to announce the birth of their fourth child James Andrew, on February 10, 1983. The family resides in Silver Spring, MD.

ELLEN (FEINSTEIN) KRUEGER and her husband Allen have a new addition to their family. Mat Steven was born January 1, 1983, and joins a sister Lauren. Ellen runs a freelance advertising/public relations business in San Antonio, Texas.

G. MATT MORAN has accepted a new position with RTP Company as Eastern Regional Manager in Winona, MN.

### 1969

BERNADINE E. ADONIZIO recently married Blucher S. Sharp in Philadelphia. Bernadine is a psychiatrist in private practice. The couple will reside in Society Hill, Philadelphia.

CHRISTINE (FISHER) BIRKENHEAD recently accepted a new position with Nesbitt Hospital Laboratory as General Laboratory Supervisor. Christine also has a new addition to her family, Victoria, who was born on January 28, 1983.

BOB BURNAT recently received an MBA in Finance from Fordham University. Bob resides in

New York with his wife Elisea and their two children.

SHARON TELBAN, Assistant to the Chairperson and an Assistant Professor at Wilkes College, expects to receive her D.N.Sc. from the University of Pennsylvania in 1985. Her specialty is Higher Education Administration in Nursing, and she is currently involved in studying nursing models, theories and conceptual frameworks.

JOHN ZIKOR and VIRGINIA (HAHN) ZIKOR '70 are proud to announce the birth of their daughter, Karolina Ann, on January 6, 1983. The family resides in West Wyoming. Congratulations, Virginia and John.

### 1971

ANDREW J. GUBANICH, JR., recently received an MBA from Lehigh University. Andrew resides in East Texas, PA.

RICHARD E. OGIN has recently been appointed to the position of assistant Principal of Holabird Junior High School in the Baltimore County Public School System, Baltimore County, MD. Richard resides in White Hall, MD, with his wife and two daughters.

ROBERT J. RUSSIN was recently married to Mary Terese Quinn. Bob is employed by Wyoming Valley School District. The couple resides in Trucksville.

### 1972

ARLENE (SUCHESKI) BALDWIN is proud to announce the birth of a son, Brian Michael, on December 18, 1982. Arlene and her husband Marc reside in Mt. Holly, NJ.

DALE RAYMOND TABOR recently married Marcella Ann Trybus. Dale is currently a post-doctoral immunology research fellow in the Department of Medicine, Division of Infectious Diseases at Hahnemann. The couple resides in Philadelphia.

### 1973

JIM THOMAS and his wife Joanne are proud to announce the birth of their first child, Brian Anthony, on October 24, 1982. Jim is Director of the Columbia County Housing Authority. The family resides at 28 E. Main Street, Wanamie, PA.

BRUCE BALLIET has accepted a position with Atari Incorporated in the Consumer Electronics Division as Product Merchandiser. Bruce resides in Tampa, FL.

JOSEPH JOHN YURKO and DIANNE CLAIRE MITAL '77 have recently been married. Dianne is employed as a teacher at Holy Name School, Forty Fort. Joe is employed as a teacher by the Westwood Regional School District, Westwood, NJ. The couple is residing in Woodbridge, NJ.



## 1974

**GIFFORD R. CAPPELLINI** and his wife Deborah are proud to announce the birth of a son, Ryan, February 26, 1983. They also have a son Gifford, 3 years old. Gifford is an Attorney in Wilkes-Barre. The family resides at Harvey's Lake.

**MARJORIE (CZULEWICZ) HINGSTON** and her husband **RICHARD '75** reside in Franklinville, NJ, with their three children, Jane, Samuel and Sarah.

**LEE DAVID AUERBACH** is now associated with the Law Firm of Daniel M. Vinnik, 20 East 73rd Street, New York, New York.

## 1975

**SAMUEL M. K. ANYOMI** recently earned his Ph.D. in Business Administration jointly from California Coast University and the University of South Carolina. Samuel resides in Columbia, SC.

**CAROL A. DRAHUS** recently announced her engagement to Capt. Michael Wisloski. Carol is a mathematics teacher at Southampton Middle School, Bel Air, MD. An April wedding is planned.

**ROBERT H. POTTER** recently received a Master in Business Administration in Health Care Degree from Western New England College.

## 1976

**SUSAN M. BRIMO** recently accepted a new position with WNIS - News/Talk Radio as producer, broadcast announcer, and occasional news co-anchorwoman. Susan resides in Norfolk, Virginia. Best of luck to you with your new position.

**DEBBIE DORMAN** recently announced her engagement to Fred Spickerman, Jr. Debbie is employed as an assistant head nurse of a medical surgical unit at Wilkes-Barre General Hospital. A July 16 wedding is planned.

**BARBARA (CHANDLER) MASSEY** and her husband Ed are proud to announce the birth of their first child Julia Elizabeth, on January 17, 1983. Barbara is on leave from her position as a Bell Public Communications Marketing Representative with the Chesapeake and Potomac Telephone Company in Baltimore. The family resides in Catonsville, Maryland.

**MICHAEL J. MERCINCAGE** has recently been promoted to Assistant Director of Finance at Children's Seashore House, Atlantic City, New Jersey. Michael resides in Cherry Hill with his wife **DEBRA (SERNAKI) MERCINCAGE '75**.

**KATHLEEN A. O'MALLEY** has recently accepted a position with the U.S. Department of Justice as Assistant U.S. Attorney, in Jacksonsville, Florida.

**HAROLD W. ROBERT** recently received the CPCU Professional Insurance Designation at ceremonies in Miami, Florida. Harold is employed by Pennsylvania Millers Mutual Insurance Company in Wilkes-Barre. He resides in Trucksville with his wife and two children. Congratulations, Harold.

**H. DAVID TRETHAWAY** and his wife Ann Marie announce the birth of a daughter, Marie Anne, on December 14. The family resides in Bayville, New Jersey.

**DONNA (GEFFERT) YOZWIAK** and her husband Lawrence announce the birth of their first child, Nathan Lawrence, on October 14, 1982. The family resides in Brodheadville, Pennsylvania.

## 1977

**JOHN J. DUDA** was recently wed to Ellen Marie Quinn. John is employed by Leslie Fay in the Engineering Department. Ellen is a receptionist for Dental Associates. The couple resides in Kingston.

**JOANNE (ENGLOT) KAWCZENSKI** and her husband Brian announce the birth of a son, Joseph Andrew, January 12, 1983. Joanne also has another son, Matthew Brian, 2½ years old. The family resides in Wilkes-Barre.

**THOMAS PARK, III**, recently became engaged to Nancy Bowanko. Tom is employed as a business education teacher at Ocean City High School, Ocean City, New Jersey. Nancy will graduate from Wilkes in May with a Bachelor of Science degree in nursing.

**ANN MARIE (GRUZDAS) PIRAGUS** resides at 134 W. Petebone Street, Forty Fort, PA.

**JOE W. SEKUSKY** has accepted a position with the Wyoming Valley Alcohol and Drug Services as a therapist. Joe resides in Exeter, PA.

**MARY LOU ZAWATSKI** was wed recently to Richard Roos. Mary Lou is employed as coordinator of staff development at NPW Medical Center. The couple will reside in Wilkes-Barre, PA.

## 1978

**DONNA JEAN CHISARICK** and **RANDY SCOTT MICHAEL '81** were recently married. Donna is a registered nurse employed by Guardian Life Insurance as a medical underwriter in Bethlehem, and Randy is employed in the Corporate Energy Department of Air Products and Chemicals Inc. The couple will reside in Emmaus, PA.

**SANDRA L. FIELD** recently received the degree of Juris Doctor from the Dickinson School of Law. Sandra is an associate with Worth Law Offices, P.C., in Allentown. She resides in Whitehall with her husband, Dr. Clifford Field.

**CHERYL LEVINE** and her husband Barry are proud to announce the birth of a daughter, Jenna Michelle, on August 20, 1982. The family resides in Cheltenham, PA.

**THOMAS D. MCINTYRE** announces his engagement to Christine Hamway. A November wedding is planned.

**SUSAN (MARGALIS) PERLIS** has accepted a position with Lackawanna Junior College as an Instructor - Computer Science & Math. Susan and her husband Joseph reside in Nanticoke.

**GARY POHORELY** and **ROSEMARIE (ROSATI) POHORELY** announce the birth of their first child, a daughter, Jessica Rosati Pohorely, on May 18, 1982. Gary is presently employed by the Somerset County Planning Board. Rosemarie is presently earning a MSW at Rutgers Graduate School of Social Work, and is employed by the Easter Seal Hunterdon Housing Program, a transitional living program for psychiatric patients. The family resides in Lambertville, NJ.

**ANTHONY J. SHIPULA** has joined the insurance firm of Chamberlin-Bovard, Inc., Bank Towers Building, Scranton, where he will be concentrating his efforts in the sales and servicing of commercial line accounts.

**MARIS G. SOLOMON** is now serving in the United States Navy as a Lieutenant, as a Family Practice resident in Charleston, SC. Maris has recently become engaged to Lt. Douglas F. Ramsay, and plans an October 1983 wedding.

**TRANG TRINH** has accepted a position with Hughes Aircraft Company as a member of the Technical Staff. He recently received his Ph.D. from the University of Illinois. Trang resides in Torrance, California.

**ELLEN K. (DUFOSSE) WENGEN** and her husband **PAUL '79** recently moved back East from California. They are currently residing in Wappingers Falls, New York, where Paul is working as the cost accounting manager for Fairchild Microprocessors and Ellen is working as a community psychiatric nurse for Dutchess County.

## 1979

**CLAIRE L. ENNIS** is presently employed as Costume Supervisor with the Joffrey II Dancers, the teaching unit of the Joffrey Ballet Company. The Company will be touring the United States and Bermuda.

**GWENDOLYN FAAS** recently announced her engagement to Andrew Donald Logan. Gwen is employed by Creative Cable Communications in Dallas, Texas, as Director of Operations. A spring wedding is planned.

**JOSEPH LAVELLE** is residing in Arlington, Virginia, and is a lawyer at Howrey and Simon Law Offices, Washington, D.C.

**EDWARD F. ORLOSKI** was wed recently to Joanne M. DelVecchio. Ed is associated with his family business, Orloski Service Stations, Inc. The couple is residing in Mountaintop.

**REBECCA E. TOLON** and **THOMAS A. QUINN '81** were wed recently. Tom is employed by the Intel Corporation, Santa Clara, California. The couple is residing in Mountain View, California.

**MYLES M. STEMPIN** recently announced his engagement to Diane Gush. Myles is employed at Don Bennett Advertising, Inc., as a media director. The wedding will take place on May 7, 1983.

## 1980

**JOSEPH ANGELELLA** recently announced his engagement to Katherine Ann Nalcwajko. Joe is pursuing his M.B.A. degree in Finance at Wilkes, and is employed by First Eastern Bank in the Commercial Loan Department as a credit analyst. The wedding will take place May 14, 1983.

**DIANE (BRODBECK) LOWE** and her husband George joyfully announce the birth of their son George Matthew, on July 6, 1982. The family resides in Augusta, Georgia.

**JOSEPH PADDOCK** was recently promoted to assistant vice president and trust officer at the First Eastern Bank of Wilkes-Barre. Joe and his wife Nancy reside in Hanover Township with their two children.

**GEORGE J. SEIGER** and **MARTHA KAY SHERMAN '82** were recently engaged. Martha is employed at Wilkes-Barre General Hospital in the Surgical Intensive Care Unit as a registered nurse. George is employed by the Social Security Administration, Wilkes-Barre. The wedding will be solemnized June 4, 1983.

## 1981

**JUDY BARNICK** was recently promoted to Administrative Assistant to the Executive Director, Wilkes-Barre Chamber of Commerce, and Administrative Coordinator of Leadership, Wilkes-Barre.

**KAREN MARIE HOLM** was recently engaged to David Trautlein. Karen is employed by the United Penn Bank, Wilkes-Barre. The wedding will take place in the spring of 1983.

**THOMAS F. KANE** was married recently to Donna Marie Nadzan. Tom is pursuing his masters degree in Public Administration and is employed by Service Master Industries, Inc., and is manager at Mercy Hospital, Wilkes-Barre.

**KATHY KOLLAR** has a position with the United States Air Force as a 2nd Lt. Staff Nurse at Travis Air Force Base, California.

**PAMELA M. LUCHI** and **LARRY J. ASSALITA '78** were recently married on July 24, 1982. Pam is a student at the Pennsylvania College of Podiatric Medicine, Philadelphia, PA. Larry is a Podiatric Surgical Resident at Oxford Hospital in Philadelphia.

**MARY THERESA PADDOCK** and **PAUL S. YURKO** recently announced their engagement. Mary Theresa is employed by the Wyoming National Bank of Wilkes-Barre. Paul is employed by Lavenhol and Horvath, certified public accountants. A June 1983 wedding is planned.



## FROM YOUR HOUSE...

*Items of interest and concern to Alumni from the Office of Alumni Relations...*

**FOR MEN AND WOMEN INTERESTED IN A CAREER CHANGE TO ENGINEERING...** If you have a B.S. in mathematics, physics, or a related science, your career opportunities could be enhanced by an engineering background. The University of Dayton and the Air Force Logistics Command's "Fast-Track Reentry Program" is a special educational program, designed for adults, and structured to advance the participant to an academic level equal to that of an electrical engineering graduate. The program offers full-credit courses, individualized counseling and guidance, and a paid, 3-month internship at an AFLC site. Participants who complete the credits portion of the program earn a Certificate in Electrical Engineering, tuition-free because it is funded by the Air Force. After graduation,

**NORMAN M. WITKO** of Plymouth, Pennsylvania, has accepted a position with Radio Shack - A Tandy Corporation Company, as a computer marketing representative.

**THOMAS J. ZUKOSKY** has been promoted to Vice-President from Assistant Vice-President at First Eastern Bank. Tom and his wife Jane reside in Kingston with a daughter Amy, who is 12.

## 1982

**DANIEL BIERDZIEWSKI** was married recently to JoAnn Marie Bobbin. Dan is employed as an accountant by the certified public accounting firm of Cavallari, Coombs, McHale and Company, Wilkes-Barre. The couple is residing in Nanticoke.

**LORRAINE A. EDWARDS** is now Mrs. Lorraine Pawluch, and resides at Apartment #32, University Manor, Hershey, PA.

**KEITH R. KLEINMAN** has joined Prudential-Bache Securities' Elkins & Co. division as an account executive. Keith most recently completed a three-week intensive training seminar at the New York home office of Prudential-Bache Securities.

tion, participants are guaranteed full-time employment with the Air Force Logistics Command. Participants may also apply for stipends, based on need, to cover partial living expenses. Applicants are selected on the basis of academic credentials, prior work experience, and commitment to employment with AFLC. Further information/application materials can be obtained by writing to Professor Carol M. Shaw, Assistant Dean of Engineering, University of Dayton School of Engineering, Dayton, OH 45469-0001, or by calling (513) 229-2736.

**CAR RENTAL DISCOUNT PROGRAM EXPANDED...** About a year ago, the Alumni Association was successful in reaching an agreement with the Avis car-rental company providing for group membership rates for alumni. We received such a positive response from the alumni toward this service that we recently expanded the discount plans so that they now apply to Hertz and National in addition to Avis.

As a member of the Wilkes College Alumni Association, you are eligible for discount rates whenever the need arises for a rental vehicle. You need only to present the attached discount card at the time of rental, along with your valid driver's license and a charge card honored by the rental company. You will then be able to take advantage of a 15% discount at Hertz and Avis, and a 10% discount at National; these rates apply to all corporate or participating licensee locations in the United States. Various other discounts are available from these companies while in Canada or other countries.

While this service can mean savings of many dollars to those alumni who use the

**DEBRA ANITA MAZANTI** was recently married to Ronald Danko. Debbie is employed as a registered nurse in the Surgical Intensive Care Unit of the Wilkes-Barre General Hospital. The couple is residing in Wilkes-Barre.

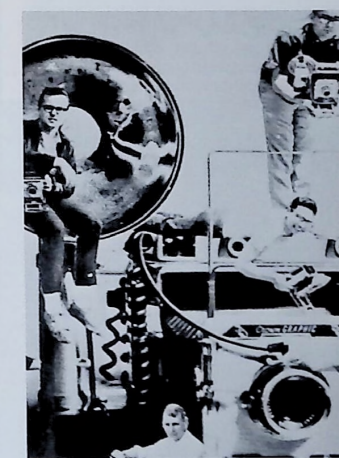
**DENISE A. MIERZWA** was recently notified by the Pennsylvania Board of Nurse Examiners that she has passed the State Board Examination for a Registered Nurse. She is employed in the Obstetrical Department of Mercy Hospital, Wilkes-Barre.

**DONNA SMITH** has been promoted to assistant cashier at First Eastern Bank, Wilkes-Barre. She resides in Edwinstown with her two children.

**ROSANNE THOMAS** was recently notified by the Pennsylvania State Board of Nurse Examiners that she successfully passed the Examination for Registered Nurse. She is currently employed in the vascular-surgery unit of the Allentown and Sacred Heart Hospital Center in Allentown and resides in Emmaus.

**CHARLES A. YARRIS** has a new position with Maritz Trailways as a Data Processing Manager. He resides in Forty Fort, PA.

car rental discount program, we remind you again that the service is offered at no cost to the College or to the Alumni Association, other than a nominal membership fee. Take advantage of this benefit the next time you rent a vehicle.



**WHERE ARE YOU NOW???** As I look out across a campus soaked by four days of "liquid sunshine," my thoughts wander to the many thousands of students who walked along South River Street, sharing minutes between classes or on their way to the Library or Dining Hall. I'm sure you "I wonder what ever happened to..." since we left Wilkes... I haven't read an update about him in the "Class Notes" of the **QUARTERLY** in



such a long time." And just as sure as the thought has entered your mind, so it has also entered the minds of your friends — about you. So if you have not sent in an update to the "Class Notes" for some time, take a minute or two now — while the idea is fresh in your mind — and let us and your friends know what you've been up to lately. Include such things as location, family status, children, and what you are doing, and any other information you want us to know. We'll then pass it along in the next **QUARTERLY**. Mail updates to Wilkes College Alumni Office, P. O. Box 111, Wilkes-Barre, PA 18766.

**BOARD APPROVES TUITION INCREASE** . . . President Robert S. Capin announced recently that the Board of Trustees has approved an 8.6% tuition increase for the 1983-84 academic year. The below national average increase means that Wilkes students will pay \$5,050 for tuition to attend the college. Room and board fees will be increased by \$180 to \$2,540 for the year. Tuition, room and board will be \$7,590 next year as compared to \$7,010 this year.

"We are very sensitive to the difficult economic times which face each and every one of us," said Capin in making the announcement. "We have trimmed our increase from 11% this year to just over 8½% next year by maintaining tight fiscal controls over the overall operation of the College. While our intent is to keep our increase as small as possible, we recognize a responsibility to maintain sound fiscal and academic programs which provide our students with the highest quality of education."

**HOMECOMING '83** . . . **JOHN and CHRIS (MIELE) BARON**, who co-chaired the 1982 Homecoming celebration, have agreed to accept the responsibility for our 1983 celebration as well. So clear the weekend of September 29-30, October 1 on your calendars and plan to join us for another outstanding event. This year's weekend will feature the golf tourney and weekend warmup on Friday evening, parade, varsity athletic events, and the dinner dance on Saturday, and the famous brunch on Sunday morning, along with many other events that you won't want to miss. The Committee is just now forming, and we are looking for new members. So if you have been wanting to get involved with the Alumni Association, just call the Alumni Office and ask that your name be added to the Homecoming Committee. And if you have ideas for improving the attractiveness of the weekend, be sure to let us know what they are — if we have missed an event that would attract alumni back to campus, it is only because we didn't think of it, not because we are not willing to offer it. So call us with your ideas and your willingness to work as a Homecoming Committee member.

**ALUMNI/ADMISSIONS CONNECTION** . . . **PHIL and CAROL (GUSGE-KOFSKI) BESLER '76** opened their 85-year-old home to a group of approximately 20 people from the Mercerville, New Jersey area as a "Get Acquainted With Wilkes" evening. Seniors in high school and their parents were invited to meet at the Besler's with Barbara Welch of the Admissions Office staff, Terry Shemo, a senior Psychology major, John Chwalek, Community Coordinator, and Dick Raspen, Director of Alumni Relations. Guests were shown slide shows of the College and the Wilkes-Barre community, and had the opportunity to ask questions about the College and its programs. Thank you Phil and Carol, for your gra-

ciousness in hosting the event. Phil is a Certified Public Accountant with the New Jersey State Department of Health, while Carol operates the Little Friends Preschool. We certainly do appreciate the warm reception you provided for us, especially considering your extra-busy schedules.

While we're on the topic, let us also ask those alumni who are interested and willing to host a "Get Acquainted With Wilkes" evening during 1983-84 should contact the Alumni Office in the near future. We are now setting our Fall schedule of these events, and we can include you in our planning. These events give us the opportunity to take our story to prospective students who might not be



From left — Art Hoover, Dick Raspen, Paul Adams and Barbara King.

**CAMPAIGN '83 — PROVIDING MINDPOWER THROUGH FIVE DECADES . . . AND BEYOND.** The Alumni phase of the annual campaign for scholarship funds is progressing well, and will have concluded by the time you read this. Like last year, we are attempting to contact each graduate by telephone during the campaign period seeking support for our scholarship needs. If you were not called, it is probably because we do not have a home telephone number where you can be reached during the evenings. We began our Phonathon efforts last November with Faculty and Staff members manning the telephones at the Alumni House. The reactions were positive as "old timers" like Joe Kanner and George Ralston had the opportunity to talk with many alumni for the first time in years. Alumni responded with generous contributions toward the annual fund, which this year is directed solely toward funding Wilkes Scholarship grants to students. We also sent a series

of mail appeals to alumni seeking their support, with the last letter scheduled to be in the mails in late April. Special thanks to Dr. **ROBERT L. MAYOCK '35**, Chairman of the Alumni Appeal for 1983, and to **MIKE DZIAK '67**, **JIM FERRIS '56**, **JERRY MOFFATT '63** and **JACK MILLER '68** for their guidance and help in various phases of the campaign. The Community Phase of the campaign reported a successful attainment of its goal at its April 7 meeting — let us, as Alumni, show the Community the spirit of our commitment to Wilkes College by responding before May 31 when the current Campaign ends. To the Alumni who manned telephones, to those who worked as ambassadors in the community phase, and to those who contributed — thank you! Part of the Wilkes tradition is the willing acceptance of responsibility, just like family members also share responsibilities, and we appreciate your continued help and interest.

able to visit the campus. We do this in a social setting, and many times, the College is able to attract highly-talented students as a direct result of this alumni involvement. Again, we handle all the necessary clerical functions such as preparing the invitations, mailings, local publicity, and so forth. We ask you to provide the location for the social, as Phil and Carol so generously did in Mercerville.

**SPRING REGIONAL EVENTS** . . . A series of social events, dinners, and cocktail parties are now being planned by the Alumni Office and Regional Vice-Presidents. Present plans call for events in Baltimore-Washington, Philadelphia, New York City, Boston, Pittsburgh, and Connecticut areas . . . Watch for announcements in the mail. If your area is not listed and you would like to help coordinate an alumni event, contact the Alumni Office with news of your interest and we will provide clerical support and suggestions. When you do receive a notice about an event in your area, plan to attend. In addition to having a great time, you will also be showing support for your Alma Mater.

#### WILKES COLLEGE ALUMNI ASSOCIATION

##### ATTENTION PARENTS!

If this magazine is addressed to your son or daughter who no longer maintains a permanent address at your home, please clip off the address label on back cover and return it with the correct address to the Alumni Office at Wilkes College. Thank you for helping us update our records.

Wilkes College admits students of any race, color and national or ethnic origin.

#### THE WILKES COLLEGE CONNECTION

FOR 24-HOUR INFORMATION  
ON WILKES COLLEGE EVENTS

**717-826-1135**



Shown from left — Rita Ann DeNisco, Mary Fonzo, Dick Raspen and Catherine & Gene Manganello.

**ALUMNI DINNER-THEATER A SUCCESS** . . . Nearly 200 local Wilkes Alumni and their guests attended a special dinner-theater program on campus on February 25 and 26. Because of the initial response, the buffet dinner, originally scheduled for the Alumni House, was moved to the College Dining Hall so that more people could be comfortably accommodated. As reservations continued to come in for a sold-out Saturday program, Dottie Carroll of the Theater staff arranged for another block of seats for

the Friday performance of "Merrily We Roll Along." Stephen Sondheim's musical. Following the performance by Wilkes students, the alumni groups reassembled at the Alumni House for a social hour. While this had been a once-a-year event, because of the interest shown by Wyoming Valley Alumni, the program will now be offered in both the Fall and the Spring. Further information about next year's offerings will be mailed as soon as the Theater Department firms up its 1983-84 schedule.



**ALUMNI HOUSE GIFTS** . . . **JOE DETTMORE '76**, Fine Arts graduate and a member of the Football Colonels in the early 70's donated one of his paintings of that football team to the Alumni House. Joe was an artist for WNFP-TV, the local ABC Television affiliate, who re-

cently relocated to New York City. Before leaving though, Joe was kind enough to bring in this beautiful picture, which now hangs in the Alumni House. Thanks, Joe, and best wishes for continued success.



# CONSTITUTIONAL AMENDMENTS SUBMITTED

At the Annual Meeting of the Association on October 8, 1982, the President and the Executive Committee received the report of the Constitution Committee chaired by Regional Vice President Arthur J. Hoover. The report contained a number of revisions to the current Constitution of the Association, along with the recommendation of the Constitution Committee that the proposed amendments be offered to the Association for adoption.

President Ferris and the Executive Committee approved the proposed amendments at its March 12, 1983, meeting, and instructed the Alumni Office to submit the amendments to the Association in the next issue of the *Wilkes College Quarterly* and include a return card for the membership to vote on the amendments. In reviewing the suggestions offered by the Executive Committee, the Constitution Committee chose not to study **ARTICLE VIII — REGIONS AND REGIONAL VICE PRESIDENTS** because of the need for additional review and input concerning the current distribution of members of the Alumni Association.

Please read through the proposed amendments carefully. In accordance with the current Constitution, voting on these amendments will take place at the Annual Meeting of the Association on Friday, September 30, 1983, during Homecoming Weekend. If you know now that you will be unable to attend the Meeting, you should complete and return the attached ballot prior to September 30; mail ballots not received by the time of the Meeting will be cast by the Executive Committee acting in proxy.

## ARTICLE II purposes

(g) To secure and maintain an Alumni House (and other buildings), as may be deemed appropriate and consistent with the attainment of these purposes for the accommodation and convenience of out-of-town Alumni visiting the College, and to serve as a gathering place fostering good will and cheer for all Wilkes College Alumni; and

### Recommended Change:

(g) To maintain the Annette Evans Alumni and Faculty House, as deemed appropriate and consistent with the attainment of these purposes, to serve as a gathering place fostering goodwill and cheer for all Wilkes College Alumni, Family, and friends, and to work toward the accommodation and convenience of out-of-town alumni visiting the College; and



## ARTICLE III membership

(b) All persons who have completed at least thirty (30) semester hours at Wilkes College and have terminated academic relations with the College; and

### Recommended Change:

(b) All persons, upon their request, who have completed at least thirty (30) semester hours at Wilkes College and have terminated academic relations with the College; and

## ARTICLE VI officers, term of office, vacancies, and elections

Section 1. The Officers of this Association shall be a President, Executive Vice-President, Regional Vice-Presidents, Secretary and Treasurer. Said Officers shall be elected pursuant to Section 3 and 4 of this Article for a term of two (2) years commencing January 1 of the following year. No officer shall serve in the same office for more than two (2) consecutive terms.

### Recommended Change:

Section 1. The Officers of this Association shall be a President, First Vice-President, Second Vice-President, Regional Vice-Presidents and Secretary. Said Officers shall be elected pursuant to Section 3 and Section 4 of this Article for a term of two (2) years commencing January 1 of the following year. No officer shall serve in the same office for more than two (2) consecutive terms.

Section 4. Election of the President, Executive Vice-President, Secretary, and Treasurer of the Association shall take place bi-annually by a plurality vote of the entire membership of the Association. The election shall be conducted by mailed written ballots as may be deemed appropriate by, and under the supervision of, the Director of Alumni Relations.

### Recommended Change:

Section 4. Election of the President, First Vice-President, Second Vice-President and Secretary of the Association shall take place bi-annually by a plurality vote of the entire membership of the Association. The election shall be conducted by mailed written ballots as may be deemed appropriate by, and under the supervision of, the Director of Alumni Relations.

## ARTICLE VII executive committee

Section 2. The Executive Committee shall be composed of the Officers of the Association designated in Article VI and the Director of Alumni Relations.

### Recommended Change:

Section 2. The Executive Committee shall be composed of the Officers of the Association designated in Article VI, the Immediate Past President of the Association, and the Director of Alumni Relations.

## ARTICLE IX authority and duties of officers of the executive committee

Section 1. President — The President is the presiding officer of all meetings of the Executive Committee and the Association. The President is an ex-officio member of all committees with the right to vote. The President shall have the authority to call a special meeting of the Executive Committee or the Alumni Association. The President shall have the authority that is implied by the title of his office.

Section 2. Executive Vice-President — The Executive Vice-President in the absence of the President is vested with all the powers and charged with all of the duties of the President.

Section 3. Treasurer — It shall be the duty of the Treasurer to keep any funds of the Association in his official custody; to deposit them in a bank or Trust Company designated by the Executive Committee; to make disbursements as authorized by the Executive Committee; to

maintain all financial records and to submit a current financial report at the annual meeting of the Association containing appropriate information of donations to the College.

Section 4. Secretary — The Secretary shall be responsible for the recording of the proceedings of the Alumni Association and of the Executive Committee and shall conduct all correspondence and record the names and addresses of the members of the Executive Committee. The Secretary shall prepare such reports and statements as may from time to time be deemed necessary for the information of the Executive Committee.

Section 5. The Regional Vice-Presidents — The Regional Vice-Presidents shall be responsible for meeting from time to time with the Alumni Chapters and members within their respective geographical regions and attempt to carry out the purposes set forth in Article II of this Constitution, and to report to the Executive Committee all matters of importance and interest to the Association.

### Recommended Change:

## ARTICLE IX authority and duties of officers

Section 1. President — The President is the presiding officer of all meetings of the Executive Committee and the Association. The President is an ex-officio member of all committees with the right to vote. The President shall have the authority to call a special meeting of the Executive Committee or the Alumni Association. The President is a member of the Board of Trustees of Wilkes College during his term of office. The President shall have the authority that is implied by the title of his office.

Section 2. First Vice-President — The First Vice-President in the absence of the President is vested with all the powers and charged with all of the duties of the President.

Section 3. Second Vice-President — The Second Vice-President in the absence of the President and the First Vice-President is vested with all the powers and charged with all of the duties of the President.

Section 4. Secretary — The Secretary shall be responsible for the recording of the proceedings of the Alumni Association and of the Executive Committee and shall conduct all correspondence and record the names and addresses of the members of the Executive Committee. The Secretary shall prepare such reports and statements as may from time to time be deemed necessary for the information of the Executive Committee.

Section 5. The Regional Vice-Presidents — The Regional Vice-Presidents shall be responsible for meeting from time to time with the Alumni Chapters and members within their respective geographical regions and attempt to carry out the purposes set forth in Article II of this Constitution, and to report to the Executive

Committee all matters of importance and interest to the Association.

## ARTICLE X standing committees

Section 1. There shall be at least five (5) standing committees, hereinafter named, each consisting of three (3) or more members of the Association, to be appointed by the President of the Association with the consent of the Executive Committee. The President shall designate the chairman and members of each standing committee, who may or may not be members of the Executive Committee. These standing committees shall be appointed in January and shall serve for a term of two (2) years.

(a) Membership Committee — It shall be the function of this committee to promote greater interest in the Alumni Association, to coordinate Alumni and undergraduate activities, to plan and promote social programs for the annual Alumni meeting, and to plan and promote other events of the Association.

(b) Fund Raising Committee — It shall be the purpose of this committee to promote, stimulate and encourage donations to the College from the Association membership, to devise, promote, and coordinate fund raising programs and activities, and to submit a current report of donations to the College at the annual meeting of the Association.

(c) Constitution Committee — It shall be the function of this committee to review, consider and draft proposed amendments and revisions to the Constitution.

(d) Nominating Committee — It shall be the function of this committee to propose names of candidates for elected offices of the Alumni Association and to disseminate biographical information about each candidate to all members of the Association prior to election.

(e) Alumni House Committee — It shall be the function of this committee to administer and maintain the Alumni House of the Association.

Section 2. The Executive Committee may establish additional interim or standing committees as may be deemed appropriate.

### Recommended Change:

(b) Fund Raising Committee — It shall be the purpose of this Committee to assist the Offices of Alumni and Development in promoting, stimulating, and encouraging support for the College from the Association membership.

(d) Nominations Committee — It shall be the functions of this Committee to (A) propose names of candidates for elected offices of the Alumni Association and to disseminate biographical information about each candidate to all members of the Association prior to election; and (B) seek nominations for established alumni awards and to make appropriate recommendations to the Executive Committee.

(e) Alumni House Committee — It shall be the function of this Committee to advise and assist the Director of Alumni Relations in the administration and use of the Alumni House.

## ARTICLE XI representation on board of trustees

Section 1. The President of the Association shall be recommended for full voting membership on the Board of Trustees of the College.

Section 2. The President or his designee shall attend all regularly scheduled meetings of the Board of Trustees of the College and shall make appropriate reports concerning these meetings to the Executive Committee.

### Recommended Change:

Eliminate Article XI in its entirety.

The By-laws of the Wilkes College Charter now provide for the Association President to serve as a full voting member of the Board of Trustees. When the present Association Constitution was revised in the early 1970's, this was a firm recommendation which subsequently became a reality.

## NEW ARTICLE IX: CONSTITUTIONAL AMENDMENTS

### ARTICLE XII constitutional amendments

Section 1. This Constitution may be amended at the Annual Meeting of the Association by a two-thirds (2/3) vote of the members voting. Proposed amendments shall be submitted by the Constitution Committee to the President of the Association and published for the membership by the Director of Alumni Relations at least thirty (30) days prior to the Annual Meeting.

### Recommended Change:

Section 1. This Constitution may be amended by the following procedure:

(a) The Constitution Committee will recommend proposed amendments to the Director of Alumni Relations not later than ninety (90) days prior to the Annual Meeting of the Association.

(b) The Director of Alumni Relations, with the consent of the Executive Committee, will mail the recommendations to the entire membership not later than sixty (60) days prior to the Annual Meeting of the Association together with appropriate ballots and instructions.

(c) The instructions will carry the recommendation of the Executive Committee for adoption, indicating that, should a ballot not be returned by at least fifteen (15) days prior to the Annual Meeting of the Association, a proxy vote for the adoption will be cast by the Constitution Committee.

(d) Results of the voting will be reported at the Annual Meeting of the Association.



# News of Florida Alumni

by Betsy Bell Condon



Did you know Wilkes has about 200 alumni living in Florida? Betsy Bell Condon, of the Development Office staff, was our ambassador there in February and this is her report about some of those she visited in the Sunshine State.

Dr. **RAYMOND PIRINO '61** runs a very busy dentist's office in Orlando. (A lady in his waiting room told me he is the best dentist she's ever heard of!) Ray was from Kingston and his wife from Hanover Township when they attended Wilkes, but after a stint at an Air Force base in Florida, Ray decided to locate in the sunny south. Two sons and a daughter later, the choice seems to have been a good one for the Pirinos. Ray has warm memories of Wilkes, with special respect and affection for Chuck Reif. His parting words were to urge Dr. Reif to visit EPCOT and Ray'd take him bass fishing.

An advocate of the importance of a Liberal Arts base in one's college studies, **RICHARD EVANS '75** earned his CPA right after graduation. (He'd gained valuable internship experience working in a local firm during college.) Rich has done well in business oriented jobs leading to his present role as Controller for Bari of Florida, but says he learned to appreciate music and became a voracious reader at Wilkes, thus bettering the overall quality of his life. He cited many professors including Capin, Terry, and Tyburski as positive influences for him. A high school graduation present from his grandparents, a "trip to Florida," was thrilling for this Nanticoke boy who had never left the Valley . . . and created the wish to live in the Tampa region.

Both Rich and Glen Lyon's **PAM SCHINSKI EVANS '77** thrive in Orlando. Pam got her MBA from Wilkes and puts her data processing background to good use as Manager of an electronic data placement center and counselor to others who seek jobs in this field. Pam's sister Gail is a current student at Wilkes.

Another Tampa Bay-Orlando area graduate, **ROBERT ADAMS '74** (and MBA '76) lauds Wilkes for the depth and breadth of his learning. He reeled off many teachers who had helped him along the way (Werner, Engel, DeYoung, Capin, Williams, etc.) and found his education to be superior to his colleagues. "My teachers and counselors

like George Ralston were always available — what an asset!" Charlotte Lord's and Chuck Reif's classes were experiences he raved about. Originally from Texas, Bob landed at Wilkes because his wife had family in northeastern PA. Bob is President of the highly successful Bin and Shelving Company in Orlando which has just moved into larger quarters. The Adams have two daughters and live in a new home in Winter Park.

A former Wilkes Education professor, Director of Alumni Affairs, and '62 graduate, Dr. **RICHARD T. REES** is enjoying the challenge of heading up the fast-growing Lakeland Regional Medical Center's hospital education department. Rick has a large staff under him and was most enthusiastic about the programs they implement. Florida seems to agree with Rick, Linda, and their two children who are involved in a variety of great activities.

I also had the pleasure of visiting with one of Wilkes' esteemed Faculty Emeriti, Dr. **RUTH JESSEE**, former head of the Nursing Department. Dr. Farley brought us the best when he talked Ruth Jesse into leaving Philadelphia and coming to Wilkes to set up our brand new degree program, which soon became a star in the college crown. Dr. Jesse lives in a lovely apartment overlooking a spectacular view of Clearwater and the Gulf of Mexico. In spite of some past illness and failing eyesight, she is spirited as ever and looked just as pretty as I'd remembered her when she left Wilkes-Barre about 10 years ago. The Eugene Hammers, Doris Barker, and John Chwaleks are among those who keep in touch with her.

Talk about entrepreneurs . . . Wilkes certainly has one in its **ROGER ROLFE '66**. Although his investment business at Dean Witter Reynolds' stunning building in Clearwater keeps him plenty busy, Roger has a number of other interests. Among them is "the hottest new restaurant to hit Clearwater in over 25 years," according to the Cuisine Column in a monthly magazine I brought home to show Roger's friends here. It is Brassy's on Island Estates where Roger's "financial know-how" and his talents as a "connoisseur of fine wine and food" are creating a popular gourmet spot for Tampa Bay residents. Roger, originally from Cleveland, came to Wilkes as a Biology major and then after a few

years doing Market Research in New York, he returned here to graduate in Business. Dr. Michelini and Bob Capin were especially helpful as counselor-teachers. Roger had a variety of positive job moves in the north; then he and his wife, Sheila, travelled through Europe for a while (with no home address); and went to Florida in 1972 . . . from which point was launched his successful stock brokership.

Other Wilkes graduates who moved around a bit before locating in the Miami-Pembroke Pines area are **SHIRLEY BARODY MYERS '58** and **THOMAS MYERS '58**. Tom's journalist jobs in Williamsport, Miami and Cocoa Beach preceded his current role as Senior Writer for Eastern Airlines. The Myers have three children and love Florida living, although they return to Wyoming Valley families and Wilkes Homecomings frequently.

Shirley is a Media Specialist in Piper High School, a modern, exciting institution she showed me through. (She'd even talked to the guidance counselors about Wilkes and I met them, too.) Shirley would be happy to arrange an alumni club gathering in southeastern Florida, so give her a call if you'd like to help out.

Each of the graduates I visited is genuinely interested in forming a Wilkes alumni group in the Sunshine State. They suggested ways to help the College and provide a pleasant, social outlet at the same time. The members might meet annually in someone's home; provide resource information for the increasing number of Wilkes graduates moving to the area as strangers; help the Admissions Office by attending high school College Nights and contacting area students interested in Wilkes (I talked to a half dozen of these 12th graders); and, in general, strengthen our ever-growing alumni base across the country.

Wilkes has much to be proud of in the enthusiastic, intelligent, articulate and personable alumni I talked to in Florida . . . just as they are proud, and vocal, about their beloved alma mater.

## PRESIDENTIAL SEARCH COMMITTEE AT WORK LOOKING FOR CAPIN'S SUCCESSOR

Jim Ferris, president of the National Alumni Association, wants to let all alumni know that he is hard at work with the Presidential Search Committee, seeking candidates for the vacancy which will occur when Bob Capin leaves office in June, 1984.

Patricia Davies, chairperson of the search committee, and Jim would be happy to receive nominations from any member of the alumni who may know of a qualified candidate.

Address all communications to:  
Ms. Patricia Davies  
c/o Presidential Search Committee  
Weckesser Hall, Wilkes College  
170 S. Franklin Street  
Wilkes-Barre, Pa. 18766



HENRI-GABRIEL IBELS, *The Circus*, 1892, Charcoal on paper, Bequest of Leonard C. Hanna, Jr., CMA 58.13.

Seurat. Judy decided to look for that proof.

"I contacted the Curator at the Cleveland Museum and was pleasantly surprised at the cordiality extended. Louise Richards invited me to come to the museum for further investigation. Once there, they removed the work from the frame so that we could look for identifying marks. There were none. I was deflated, but made the decision to take each figure in the drawing and look for that figure in other works by Ibels. Three were comparatively easy to find, they were all in 'Au Cirque' (the clown, the ringmaster, and the horse)."

The remaining figures led her down library aisles for the next several months, but, at last she'd finished what she'd set out to do. She found each one . . . the Ballerina in a suite of five lithographs, published in 1895; four more in a small book, "Les

Demi-Cabots," published in 1896; these included the tightrope walker, dog, hoop, and juggler. The only elusive figure is that of the monkey. "Undoubtedly," she said, "this had something to do with the attribution to Seurat."

We previously mentioned that Judy is now involved in cataloging the Roesen works. Little is known about the artist's life. He came to the United States from Germany, lived for about ten years in New York, then went to Philadelphia and Huntington, Pa. Only about 25 of his works are signed and dated, out of a probable 200 paintings said to be Roesen's. I think that we at Wilkes and those who met Judy in Cleveland have little doubt that the other 175 paintings, if they exist, will be a part of the Roesen catalog scheduled to be published in the fall of next year.



HENRI-GABRIEL IBELS, *Au Cirque*, 1892, Color Lithograph.



# News of Florida Alumni

by Betsy Bell Condon



Did you know Wilkes has about 200 alumni living in Florida? Betsy Bell Condon, of the Development Office staff, was our ambassador there in February and this is her report about some of those she visited in the Sunshine State.

Dr. RAYMOND PIRINO '61 runs a very busy dentist's office in Orlando. (A lady in his waiting room told me he is the best dentist she's ever heard of!) Ray was from Kingston and his wife from Hanover Township when they attended Wilkes, but after a stint at an Air Force base in Florida, Ray decided to locate in the sunny south. Two sons and a daughter later, the choice seems to have been a good one for the Pirinos. Ray has warm memories of Wilkes, with special respect and affection for Chuck Reif. His parting words were to urge Dr. Reif to visit EPCOT and Ray'd take him bass fishing.

An advocate of the importance of a Liberal Arts base in one's college studies, RICHARD EVANS '75 earned his CPA right after graduation. (He'd gained valuable internship experience working in a local firm during college.) Rich has done well in business oriented jobs leading to his present role as Controller for Bari of Florida, but says he learned to appreciate music and became a voracious reader at Wilkes, thus bettering the overall quality of his life. He cited many professors including Capin, Terry, and Tyburski as positive influences for him. A high school graduation present from his grandparents, a "trip to Florida," was thrilling for this Nanticoke boy who had never left the Valley . . . and created the wish to live in the Tampa region.

Both Rich and Glen Lyon's PAM SCHINSKI EVANS '77 thrive in Orlando. Pam got her MBA from Wilkes and puts her data processing background to good use as Manager of an electronic data placement center and counselor to others who seek jobs in this field. Pam's sister Gail is a current student at Wilkes.

Another Tampa Bay-Orlando area graduate, ROBERT ADAMS '74 (and MBA '76) lauds Wilkes for the depth and breadth of his learning. He reeled off many teachers who had helped him along the way (Werner, Engel, DeYoung, Capin, Williams, etc.) and found his education to be superior to his colleagues. "My teachers and counselors

like George Ralston were always available — what an asset!" Charlotte Lord's and Chuck Reif's classes were experiences he raved about. Originally from Texas, Bob landed at Wilkes because his wife had family in northeastern PA. Bob is President of the highly successful Bin and Shelving Company in Orlando which has just moved into larger quarters. The Adams have two daughters and live in a new home in Winter Park.

A former Wilkes Education professor, Director of Alumni Affairs, and '62 graduate, Dr. RICHARD T. REES is enjoying the challenge of heading up the fast-growing Lakeland Regional Medical Center's hospital education department. Rick has a large staff under him and was most enthusiastic about the programs they implement. Florida seems to agree with Rick, Linda, and their two children who are involved in a variety of great activities.

I also had the pleasure of visiting with one of Wilkes' esteemed Faculty Emeriti, Dr. RUTH JESSEE, former head of the Nursing Department. Dr. Farley brought us the best when he talked Ruth Jesse into leaving Philadelphia and coming to Wilkes to set up our brand new degree program, which soon became a star in the college crown. Dr. Jesse lives in a lovely apartment overlooking a spectacular view of Clearwater and the Gulf of Mexico. In spite of some past illness and failing eyesight, she is spirited as ever and looked just as pretty as I'd remembered her when she left Wilkes-Barre about 10 years ago. The Eugene Hammers, Doris Barker, and John Chwaleks are among those who keep in touch with her.

Talk about entrepreneurs . . . Wilkes certainly has one in its ROGER ROLFE '66. Although his investment business at Dean Witter Reynolds' stunning building in Clearwater keeps him plenty busy, Roger has a number of other interests. Among them is "the hottest new restaurant to hit Clearwater in over 25 years," according to the Cuisine Column in a monthly magazine I brought home to show Roger's friends here. It is Brassy's on Island Estates where Roger's "financial know-how" and his talents as a "connoisseur of fine wine and food" are creating a popular gourmet spot for Tampa Bay residents. Roger, originally from Cleveland, came to Wilkes as a Biology major and then after a few

years doing Market Research in New York, he returned here to graduate in Business. Dr. Michelini and Bob Capin were especially helpful as counselor-teachers. Roger had a variety of positive job moves in the north; then he and his wife, Sheila, travelled through Europe for a while (with no home address); and went to Florida in 1972 . . . from which point was launched his successful stock brokership.

Other Wilkes graduates who moved around a bit before locating in the Miami-Pembroke Pines area are SHIRLEY BARODY MYERS '58 and THOMAS MYERS '58. Tom's journalist jobs in Williamsport, Miami and Cocoa Beach preceded his current role as Senior Writer for Eastern Airlines. The Myers have three children and love Florida living, although they return to Wyoming Valley families and Wilkes Homecomings frequently.

Shirley is a Media Specialist in Piper High School, a modern, exciting institution she showed me through. (She'd even talked to the guidance counselors about Wilkes and I met them, too.) Shirley would be happy to arrange an alumni club gathering in southeastern Florida, so give her a call if you'd like to help out.

Each of the graduates I visited is genuinely interested in forming a Wilkes alumni group in the Sunshine State. They suggested ways to help the College and provide a pleasant, social outlet at the same time. The members might meet annually in someone's home; provide resource information for the increasing number of Wilkes graduates moving to the area as strangers; help the Admissions Office by attending high school College Nights and contacting area students interested in Wilkes (I talked to a half dozen of these 12th graders); and, in general, strengthen our ever-growing alumni base across the country.

Wilkes has much to be proud of in the enthusiastic, intelligent, articulate and personable alumni I talked to in Florida . . . just as they are proud, and vocal, about their beloved alma mater.

## PRESIDENTIAL SEARCH COMMITTEE AT WORK LOOKING FOR CAPIN'S SUCCESSOR

Jim Ferris, president of the National Alumni Association, wants to let all alumni know that he is hard at work with the Presidential Search Committee, seeking candidates for the vacancy which will occur when Bob Capin leaves office in June, 1984.

Patricia Davies, chairperson of the search committee, and Jim would be happy to receive nominations from any member of the alumni who may know of a qualified candidate.

Address all communications to:  
Ms. Patricia Davies  
c/o Presidential Search Committee  
Weckesser Hall, Wilkes College  
170 S. Franklin Street  
Wilkes-Barre, Pa. 18766



HENRI-GABRIEL IBELS, *The Circus*, ca 1892. Charcoal on paper, Bequest of Leonard C. Hanna, Jr., CMA 58.13.

Seurat. Judy decided to look for that proof.

"I contacted the Curator at the Cleveland Museum and was pleasantly surprised at the cordiality extended. Louise Richards invited me to come to the museum for further investigation. Once there, they removed the work from the frame so that we could look for identifying marks. There were none. I was deflated, but made the decision to take each figure in the drawing and look for that figure in other works by Ibels. Three were comparatively easy to find, they were all in 'Au Cirque' (the clown, the ringmaster, and the horse)."

The remaining figures led her down library aisles for the next several months, but, at last she'd finished what she'd set out to do. She found each one . . . the Ballerina in a suite of five lithographs, published in 1895; four more in a small book, "Les

Demi-Cabots," published in 1896; these included the tightrope walker, dog, hoop, and juggler. The only elusive figure is that of the monkey. "Undoubtedly," she said, "this had something to do with the attribution to Seurat."

We previously mentioned that Judy is now involved in cataloging the Roesen works. Little is known about the artist's life. He came to the United States from Germany, lived for about ten years in New York, then went to Philadelphia and Huntington, Pa. Only about 25 of his works are signed and dated, out of a probable 200 paintings said to be Roesen's. I think that we at Wilkes and those who met Judy in Cleveland have little doubt that the other 175 paintings, if they exist, will be a part of the Roesen catalog scheduled to be published in the fall of next year.



HENRI-GABRIEL IBELS, *Au Cirque*, 1892. Color Lithograph



## Wilkes provides link for students seeking careers in Allied Health Professions

by Randy Xenakis

"Our new affiliation with Temple University's College of Allied Health Professions is not only a natural for Wilkes, but will also prove to be a tremendous service to Wyoming Valley and Northeastern Pennsylvania," said Wilkes College President Robert S. Capin following the announcement recently of the affiliated health science agreement with Temple University.

The new Wilkes-Temple program will give students interested in physical therapy, occupational therapy, medical technology and health records administration, the unique opportunity to spend two years at Wilkes followed by two years at Temple where they would ultimately receive their bachelor of science degree in their chosen specialty.

Dr. Ralph Rozelle, dean of health sciences at Wilkes, says the new program, much like the Wilkes-Hahnemann Medical College affiliated program offering established in 1973, will provide special opportunities for our students and for our region.

"This affiliation with Temple will enable students to have excellent training in the areas of physical and occupational therapy while enjoying the best of both worlds," says Rozelle. "Students can take their first two years here at Wilkes taking advantage of the benefits of a small, private college before taking their final two years at Temple which will provide quality training through its major medical center."

With more jobs than applicants, careers in physical and occupational therapy are becoming very attractive to college-bound students. According to Rozelle, the allied health profession provides both financial and personal rewards to those entering the field.

"Records indicate that graduates in these fields are earning beginning salaries which start in the low 20's," Rozelle says. "Personal rewards are found daily through working with handicapped patients and those who require rehabilitation services."



Students accepted into Optometry include (seated, L. to R.) Mary Ellen Judge, Swoyersville; Hidy Strongwater, Allentown; John Stachacz, Dickson City; Michael Benyo, Horseheads, N.Y.; Steven Reto, Pen Argyl; George Ogren III, Millinburg. (Standing, L. to R.) Dr. Joseph Bellucci, professor of education; Kenneth Savitski, Throop; Mark Radziewicz, West Hazleton; Martin Storbeck, West Milford, N.J.; Howard Hartzell III, Millinburg; and Dr. Ralph Rozelle, dean of health sciences. Also accepted was Steven Demko of Drums.



Those students accepted into Podiatric Medicine are (seated, L. to R.) John Raineiri, River Edge, N.J.; Raef Fahmy, Dallas; and Joseph Biancarelli, Jessup. (Standing, L. to R.) Dr. Joseph Bellucci, professor of education; Scott McGrath, Scranton; Patrick Diwyer, New Milford, N.J.; and Dr. Ralph Rozelle. Mark Mumin of Vandling also has been accepted.

In addition to good starting salaries and excellent job placement, careers in allied health provide for good working conditions as well as job security. Graduates usually practice their profession in hospitals, rehabilitation centers, clinics, and, in some cases following several years of experience, private practice.

Like the Wilkes-Hahnemann Program, Wilkes has linked itself with Temple's Allied Health Program to provide health care professionals to Northeastern Pennsylvania — an area which traditionally suffers from a low supply of physical and occupational therapists.

Dr. Mary Lee Seibert, dean of the Temple University College of Allied Health Professions, is pleased with the new program. "We are looking forward to working with Wilkes College in this affiliated program which will give us the opportunity to provide for Wyoming Valley and Northeastern Pennsylvania quality

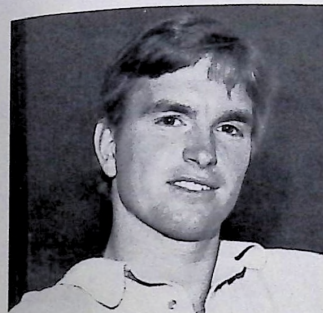
health care professionals. It will also enable us," she continued, "to increase the quality of our applicant pool while using the resources of Wilkes to help strengthen our overall Allied Health Science Program. Our ultimate goal in this venture is to attract more qualified health science students who can, in turn, be placed within your community to strengthen and maintain the health services in Northeastern Pennsylvania."

In addition to the affiliated Allied Health Program, Wilkes and Temple have combined to offer local students affiliated programs in pharmacy and dentistry.

In other health science-related fields, seventeen students recently have been accepted into affiliated professional schools. Six were accepted into Pennsylvania College of Podiatric Medicine and eleven into the Pennsylvania College of Optometry.

## sportsupdate

by Philip Wingert



### BELLAIRS ANNOUNCED AS NEW MEN'S VARSITY COACH

Bart Bellairs was named the new full-time head basketball coach at Wilkes in early March at a press conference held in Weckesser Hall.

Bellairs takes over for Jim Atherton who served two years as a part-time head basketball coach. Bellairs was an assistant with the Colonels the past two seasons, and has over five years' experience as a college coach on all three divisions of the NCAA.

A Richmond, Kentucky, native, Bellairs previously held the junior varsity head coaching position at Lycoming College and also served as an assistant with the Western Illinois University basketball program.

"As for my philosophy, I believe strongly in emphasizing character building. I hope to get our players involved in a couple of community projects and implement high moral values in practice and games," said the 27-year-old Bellairs. "One of my biggest objectives is to have a complete program and to make myself available to our students."

Bellairs, his wife Laurie and young daughter reside in Parsons. He received his bachelor's degree from Warren Wilson College in Asheville, North Carolina, and his master's degree in education from Western Illinois.

### POPPEL WINS EIWA TITLE

Wilkes College senior Mark Popple captured his first Eastern Intercollegiate Wrestling Association title and the first individual crown for a Colonel wrestler since 1979 when Mark Densberger and Dan House took those honors.

The host Lehigh University Engineers won the overall team title while Wilkes placed fourth in the 79th annual event behind Navy and Syracuse.

Popple, who decided on the no. 1 seed, Frank Shaffer of Navy, 14-8, to become only the fourth Wilkes wrestler ever to capture a first place in an EIWA Tournament, was joined by two teammates at the NCAA Championships in Oklahoma City, Oklahoma.

Freshman Marc Sodano pinned Princeton's Dave Crisconti at 118 pounds in the consolation finals to earn his trip to the nationals. Kris Rowlette, a 126-pound senior, earned a 2-2, OT 1-0 decision over Cornell's Mark Harbold to gain his second trip to the nationals in as many years. Mark Correll finished fourth at 177 pounds and Lenny Nelson finished sixth at 142 pounds.

In the national tournament, Sodano and Rowlette lost in first-round action. The number five seed, Popple, won his first two matches but lost to the number four seed, Jim Heffernan of Iowa, 7-6, in the quarterfinal round. Popple's hopes of achieving All-American status were lost when he dropped a 5-1 decision to Wes Gasner of Wyoming in the consolations.

Popple, considered one of Wilkes' greatest wrestlers, finished his career with a 70-15-2 collegiate record. Other graduating seniors include Lenny Nelson (66-20-6), Kris Rowlette (47-29-1), Pete Creamer (63-26-0) and Mark Troutman (41-34-1).

### LATINI WINNER IN INTERNATIONAL PLAY

In early March, Beth Latini, a Wilkes freshman, participated on the United States racquetball team at the North American Zone Competition in Stockton, California.

Latini and her partner Tammy Hajjar, a sophomore at Marist College in Poughkeepsie, New York, defeated the women's doubles teams from both Costa Rica and Mexico to win the championship at the International Amateur Racquetball Federation's 1983 American Region Games.

The zone competition was the first of its kind between teams from the United States, Mexico and Costa Rica.

A native of Wayne, the biology major is a member of the Wilkes women's volleyball and softball teams.

### WILKES' HURST NAMED MAC ALL-STAR

Wilkes College women's basketball standout Charlene Hurst has been selected as a first-team All-Middle Atlantic Conference player for the second consecutive year.



Hurst, ranked 12th nationally in scoring last year as a freshman, scored 354 points during this year's 10-9 season, averaging 18.6 points per game. She led the team in field goal percentage (.530), was second in free-throw percentage, second in assists, third in rebounding and third in scoring. Against MAC opponents this year her .555 shooting accuracy from the field was the sixth best in the Conference.

The 5'8" guard has started every game for the Lady Colonels over the past two seasons, and has scored 723 points to rank sixth on the All-time Wilkes Women Scorers' list.

At this year's Wilkes Letterwomen's Holiday Tournament, Hurst was selected the most valuable player for the second year in a row.

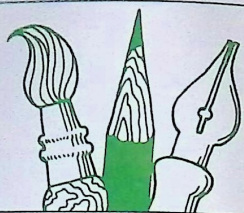
"Charlene has had two outstanding seasons for us. She is one of the most well-rounded players in Division III," explained head coach Nancy Roberts.

Hurst, a sophomore elementary education major, is active in the letterwomen's club, serves as a student assistant in the sports information department and is a second-year member of the softball team.

The daughter of Charles and Ann Marie Hurst of Wilkes-Barre, Charlene is a graduate of Bishop Hoban High School.



# thegallery



## 1933 REVISITED: AMERICAN MASTERS OF THE EARLY THIRTIES

In conjunction with the fiftieth anniversary celebration, the Sordoni Art Gallery recently presented the major exhibition "1933 Revisited: American Masters of the Early Thirties."

The exhibition, which included paintings, prints and small sculpture executed between the years 1928 and 1933, was planned to hypothetically recreate the New York art scene during that time. The plan for the show was

ISABEL BISHOP, *Dante and Virgil in Union Square, 1932*, Delaware Art Museum, Gift of the Friends of Art.



EDWARD HOPPER, *Farmhouse at Essex, Mass., 1929*. Courtesy of Kennedy Galleries, Inc. NY, NY.



JOHN MARIN, *Marin Island, Maine, 1932*, Courtesy of Kennedy Galleries, Inc., NY, NY.

not to represent a single movement or school but rather to capture the rich variety of trends present in any given moment of time. Therefore, artists of different and sometimes opposing styles were represented, some in their infancy in 1933 and some fully matured.

William Sterling, chairman of the Art Department at the College, served as curator for the exhibition. In his essay for the illustrated catalog for the exhibition, Dr. Sterling refers to the art movements of the early thirties which include regionalism, precisionism, realism as influenced by "The Eight" and abstraction. (Catalogs are still available.)

Among the artists represented were: Milton Avery, Isabel Bishop, Charles Bruchfield, Arthur Dove, Edward Hopper, John Sloan, Francis Speight, Moh Marin, and Kenneth Hayes Miller.

The exhibition was made possible by grants from the Pennsylvania Council on the Arts, the John Sloan Memorial Foundation and the Andrew J. Sordoni Foundation.

JOHN SLOAN, *Girl Back to the Piano, 1932*, Sordoni Gallery Wilkes College Permanent Collection





## New Remodeled Solid State Laboratory at Wilkes College

The Department of Engineering at Wilkes College announces the opening of the newly remodeled solid state device fabrication laboratory. The new facility, which is used both for teaching and faculty research, is housed in a custom-designed ultra-clean environment in order to meet the design tolerances and specification necessary for the fabrication of modern semiconductor devices.

The heart of the laboratory is a complete semiconductor processing area with facilities for wet chemistry, oxidation, photolithography, diffusion and ion implantation, the key elements necessary for the manufacture of microelectronic chips. In addition, the laboratory supports a fully equipped test area which enables characterization of the



structure and electrical performance of microelectronic devices.

"This laboratory is a major step in the continuing development of our academic program and related research efforts in the area of solid state devices," says Dr. Umid R. Nejib, head of the engineering department at Wilkes College. Adds Nejib, "I envision in the near future the development of a master's degree program based on this laboratory and

on other facilities available in our department. This will provide both the academic and research excellence necessary to attract high technology industry to our local economy."

Wilkes College is only one of a few undergraduate institutions in the United States to support a facility of this type. Adjunct Professor Vince Osadchy and Assistant Professor Gary Dolny, faculty in charge of the Solid State Laboratory, feel that the new additions will greatly enhance their already existing capabilities. They note that graduates of this program will have the necessary experience to enter the semiconductor industry immediately upon graduation.

The engineering department at Wilkes College has worked closely with leaders in the industry in developing the new laboratory. Nejib notes in particular the donation of sophisticated equipment and supplies provided by the RCA Solid State Division located in Mountaintop, PA. It is expected that this close association will continue in the future to the mutual benefit of both the industry and the college.

This article submitted through RCA Newsletter.

## Your Bequests Your Legacies

By Betsy Bell Condron



If you read this column, you certainly peruse Sylvia Porter now and then . . . so you may remember a recent gem in which she described Estate Planning. Porter worried that too many people don't benefit from such planning because they think it's only for the very rich, and they're dead wrong. (There's a pun in there somewhere?)

She says that the only reason you should not have a will (the next most important document to your birth certificate and your marriage license) is if you are satisfied to die intestate (no will) and have the government divide up your belongings as it sees fit. And the tax consequences of dying intestate can be horrendous.

As I've often pointed out herein (and am clarifying in a brochure to be sent many of you this summer) . . . "whatever you own" is your estate. I'll wager everyone reading these words owns some things worthy of planning-ahead-for. As an ordinary citizen, you put your loved ones in peril if you haven't made your will, so do it (or re-do it). In some parts of the country, you can even videotape your will!

The form of Planned Giving most widely understood is a bequest by will. Bequests can take many

forms, but in this 50th Anniversary Year of Wilkes I would like to stress memorial gifts to the College, to be designated in your will. This is a means for making a contribution without diminishing your assets during your lifetime.

Of the numerous ways to provide support to Wilkes by your will, a bequest of a fixed amount of dollars or specific items of real or personal property is probably the simplest. However, your attorney can help you draft various ways to remember Wilkes, appropriate to your own circumstances. One way is to earmark a percentage of your estate for Wilkes, after all other priorities have been taken care of. Or, you may wish to name the College in a contingent bequest . . . in case your other beneficiaries predecease you.

Colleges are natural vehicles for memorial philanthropy because their works, which encompass almost everything of humanitarian interest, endure through the ages. The names of beloved teachers or family members important to the College or community are kept alive by bequests. Remember that trusts may be set up by will, too . . . and they are popular means of giving life-income to loved ones while assuring a memorial in any of the College's diverse fields of teaching and service.

During the past anniversary year, dozens of family names have been honored through Wilkes College memorials: in Founders Hall, by scholarships, graduation awards, and special educational programs. We have also received many gifts in memory of loved ones for whom this College had been of deep interest during some part of their lives.

One way Wilkes uses to plan for its future is to keep a file of "expectancies." This list is added to

when you let us know that you have included us in your will . . . when you have planned for your future (and ours) by leaving a bequest as your legacy to future generations. No matter the size of your bequest (in fact, Wilkes doesn't need to know the amount at all), we would be pleased to add your name to our Honor Roll Expectancy List.

MEMORIAL GIFTS to Wilkes College, in any amount, are a lasting tribute to a friend, relative or respected acquaintance . . . and a thoughtful remembrance for special occasions. The gift will be acknowledged promptly with an appropriate card or letter to the donor and to the family of the deceased or the person being honored.

BEQUESTS made in your will to Wilkes College, in any amount, give needed support to the high quality of education and service offered our students and the community.

To: Director of Planned Giving  
Wilkes College  
Wilkes-Barre, PA 18766

- ☐ I am interested in learning more about the Wilkes Planned Giving programs.
- ☐ I wish to record that I have planned a bequest to Wilkes.

Name \_\_\_\_\_

Address \_\_\_\_\_



## As the 50th Anniversary year draws to a close, we reminisce . . . Through the years

by Jane Manganello

The year was 1936, Bucknell Junior College in Wilkes-Barre was just three years old, and already in financial difficulty. The fledgling College was operating as a satellite of Bucknell University in Lewisburg.

It was really no surprise that the young school was in financial straits, in fact, to many, it was a surprise that the school had survived its first three years. When the idea of a junior college was introduced in 1933, it was done with reserve. People were of the opinion that neither the economy nor the area could support the venture. By 1936 it seemed those opinions were justified.

The unemployed constituted about 18% of the population and there was little evidence of hope or help for the anthracite region of Pennsylvania. Coal was being replaced by oil and gas and the Northeast was not then equipped to search for new industry. It seemed bad timing for the establishment of an institution of higher education, especially in an area where almost all would be first generation college students.

The outlook was bleak and the media predicted the demise of the new school. But something happened that year, something that has become tradition. The College and the community joined in a concentrated effort to make things happen. A fund-raising effort aimed at keeping the school open was initiated. Almost immediately, gifts of cash and property were being given. The community wanted its College . . . The College dedicated itself to the community. The relationship is constant.

The Junior College remained open, and in 1947 was granted the charter creating the four-year, coeducational, liberal arts institution christened Wilkes College.

There were periodic rough spots during the early years which did not disappear with the granting of a charter. But, Wilkes not only weathered these times, it managed to grow into the viable resource that now has great economic and social impact on the region which helped it grow.

A recent study indicates that students from the area spend approximately half a million dollars a year in Wyoming Valley. Campus visitors spend an additional \$175,000 annually. Materials purchased by the College locally amount to another \$175,000 and utility bills alone constitute another \$600,000. The study shows that over the last fifteen years, Wilkes has been able to pour back into the community over fifteen million dollars, through refurbishment, renovation and new building construction.

Equally important as economics, is the cultural and social impact generated by the various programs which have surfaced over the last fifty years. So many of these programs started as college-community affiliations as need was recognized by either the College or members of the community. Personnel from the College work in almost every off-campus event: the annual Cherry Blossom Festival, the Fine Arts Fiesta, Community Concert Series; YMCA/YWCA events; Jewish Community Center events. Under the sponsorship of student government the Wilkes College Concert and Lecture Series has become one of the outstanding cultural arts presentations for the area. The series offers a diverse program of educational and enriching programs to both campus and community, free of charge.

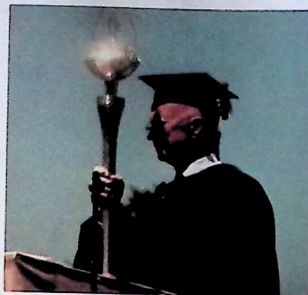
The facilities on the Wilkes campus are probably the best graphic example of how, during the early years, the community supported the College in its efforts to survive.

Names on buildings throughout the 23-acre campus are testament to the memories of those who gave so much to the school: The Sordoni Art Gallery, in memory of Andrew Sordoni, referred to by Dr. Farley as "a constant friend and benefactor;" the Dorothy Dickson Darte Center for the Performing Arts and Darte Hall, the music building adjoining the CPA, both structures made possible by the quiet generosity of Mrs. Darte; Stark Learning Center, in memory of Admiral Harold R. Stark. The list goes on: Weiss, McClintock, Evans, Weekesser, Kirby, Conyngham, Roth, and so many others who gave not only financially, but gave of themselves.

These facilities are used daily by both campus and community people to enrich and educate or to house students. The Sordoni Art Gallery brings to the area 12 exhibitions a year in all media. The stage of the Darte Center for the Performing Arts will this year welcome not only Wilkes presentations but will be the place where hundreds of community productions and events will be shown.

Today, 50 years after its tenuous beginnings, Wilkes College is facing another of its rough spots, in an economic atmosphere akin to that of its early years. However, in a recent address to the media, President Robert S. Capin voiced a definite difference in attitude. He said, in part, "Wilkes will survive, of that there is no doubt." Under Capin's leadership, in a time when many small colleges are closing their doors, Wilkes is currently on sound financial ground. The early doubts, the fears, the tenuous start have been replaced by confidence. Now as Wilkes celebrates its 50th anniversary, it is apparent that the community still wants its College . . . The College is still dedicated to its community.





**M**ore than 13,500 students have passed through the halls of Wilkes College over the past 50 years. During that period of time many friendships have developed and long-lasting relationships established. During the five decades of educational service, the College has been sensitive to the needs of the students and the community. To be effective, the College has, during this period, expanded its programs, strengthened its curriculum, maintained a strong faculty and made a continuing commitment to the students and community it serves.

While change is necessary to keep in step with the times, Wilkes College has not changed the one thing it has offered since 1933 — **Quality**.

Wilkes College . . . a special place with special people. There is no better way to prepare for tomorrow.



## Wilkes College

Providing MINDPOWER  
through Five Decades  
. . . and Beyond.

**Wilkes College Quarterly**  
Wilkes College  
Wilkes-Barre, Pa. 18766  
ADDRESS CORRECTION REQUESTED

NON-PROFIT ORGANIZATION  
U. S. POSTAGE  
**PAID**  
PERMIT NO. 355

MRS. BETSY BELL CONDRON  
36 REYNOLDS ST.  
KINGSTON, PA

18704

'79