

WILKESuniverse

The voice of Wilkes University Alumni

WINTER 2006

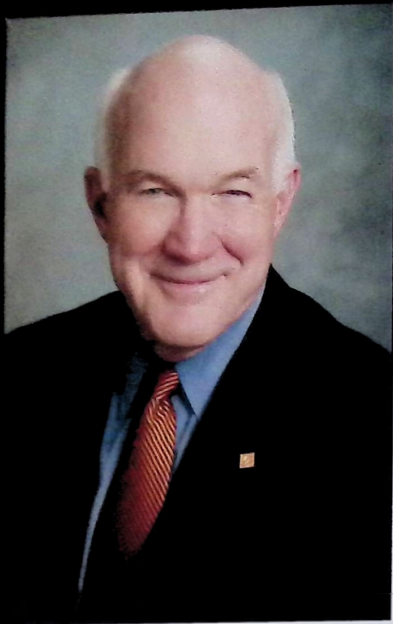


BARNES & NOBLE
WILKES UNIVERSITY • KING'S C

A Novel Idea

Joint bookstore deal called first
of its kind in higher education

SPECIAL REPORT OF GIFTS ISSUE



Our Changing Landscape

BY DR. TIM GILMOUR, WILKES UNIVERSITY PRESIDENT

FOR THOSE OF YOU WHO VISIT THE WILKES CAMPUS, I'M SURE YOU'LL NOTICE the significant improvements to our beautiful university grounds and revitalized downtown. The Wilkes University Board of Trustees, dedicated alumni and regional leaders are working hard to improve the campus and downtown business district. If you haven't visited recently, you should see what you are missing! In the meantime, take a minute to read the cover and feature stories in this issue to gain an understanding of the latest developments.

The feature story on the new pergola demonstrates the impact an alumnus can have on the landscape of Wilkes University. Clayton Karambelas '49 and his wonderful wife, Theresa, should be commended for their unique contribution of a Greek pergola that will soon grace the Greenway next to the Alumni House. This wonderful tribute will be enjoyed for generations by students and alumni.

For all of us here in Wilkes-Barre, the wait for a downtown bookstore has taken a decade. But the presence of a Barnes & Noble College Superstore near Public Square on South Main Street was worth the wait. It is everything we had hoped for. With 20,000 square feet of retail space, this academic superstore will serve students from King's College, Luzerne County Community College and Wilkes University as well as theater-goers, shoppers and others looking to reignite downtown nightlife.

Wilkes could not have done this alone. Without close collaboration with our friends at King's, and without the assistance of the Greater Wilkes-Barre Chamber of Business and Industry and the city and county governments, this wonderful development would not have materialized. This is the first time that two colleges have collaborated with Barnes & Noble to jointly operate a bookstore anywhere in the U.S. It shows a commitment to think in new ways so we can best serve our students and our community. I hope it is just the beginning of innovative ways to improve student services and to lower the costs of doing business.

This issue of *Universe* also includes the Report of Gifts for 2005-2006. You will find hundreds of names of alumni who, over the years, have supported students through generous giving to scholarships and general fund needs. I want to personally thank each and every one of you for your support. We should all be pleased that Wilkes has raised \$1 million more this year than two years ago. To reach our goal of becoming a premier university in the Mid-Atlantic Region, we will need everyone's continued support.

The Report of Gifts also shows that Wilkes University raised \$100,000 for student scholarships from local businesses and corporations in support of the Jay S. Sidhu School of Business and Leadership "Outstanding Leadership Fund."

Hope to see you on campus soon. !!!

Tim Gilmour

Earl & Sedor Photography

WILKES UNIVERSITY

President
Dr. Tim Gilmour

VP for Development
Martin Williams

UNIVERSE EDITORIAL STAFF

Executive Director, Marketing Communications
Jack Chielli

Associate Director, Marketing Communications
Christine (Tondrick) Seitzinger '98

Sports Editor
John Seitzinger

Contributing Writers
Kimberly Bower-Spence
Cindy Taren M'07
Julie Uehara
Emily Vincent

Layout/Design
Quest Fore

ALUMNI RELATIONS STAFF

Executive Director
Sandra Sarno Carroll

Associate Director
Michelle Diskin '95

Alumni Services Manager
Nancy A. Weeks

ALUMNI ASSOCIATION BOARD OFFICERS

President
Colleen Gries Gallagher '81

First Vice President
George Pawlusch '69

Second Vice President
Terrence Casey '82

Historian
John Pullo '82

Secretary
Beth Danner '02

Photography
Earl & Sedor Photographic
Mark Golaszewski
Ryan Spencer Reed
Cindy Taren M'07
Curtis Salomick Photography
John Seitzinger
Michael P. Touey

Printing
Payne Printery, Inc.

WINTER 2006

Wilkes University is an independent institution of higher education and dedicated to academic and intellectual excellence in the liberal arts, sciences, and professional programs. The university provides its students with the experience and education necessary for career and intellectual development as well as for personal growth, engenders a sense of values and responsibility, and encourages its students to welcome the opportunities and challenges of a diverse and continuously changing world. The university emphasizes the tradition of strong student-faculty interaction in all its programs, attracts and retains outstanding people in every segment of the university, and fosters a spirit of cooperation, community involvement, and individual respect within the entire university.

WILKESuniverse

WINTER 2006

Contents

Features

Cover Story:
12 Barnes & Noble becomes joint bookstore for Wilkes and King's

Spotlight:
16 Karambelas' gift beautifies campus

Sections

2 Association News

5 Development News

6 On Campus

10 Sports

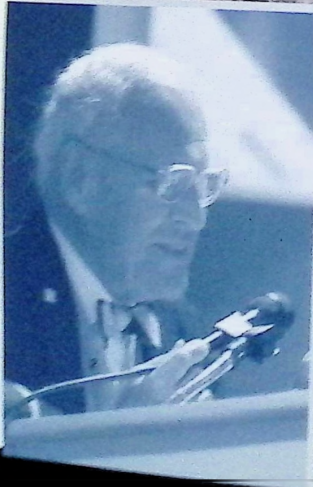
18 2005-2006 Annual Report of Gifts



ASSOCIATION **news**



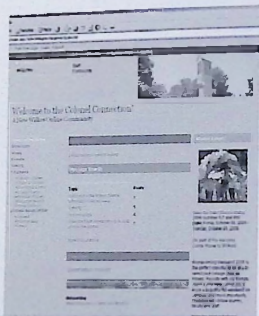
2006 Homecoming



View more Homecoming Photos on The Colonel Connection
http://community.wilkes.edu/Homecoming_2006

The Colonel Connection Reconnects Old Friends

Traffic is brisk on The Colonel Connection. Wilkes' new online community, with more than 32,000 hits logged through September. Most activity so far comes from 1960s and 1970s graduates, related Sandra Carroll, executive director of alumni relations. Millennium alumni also dominate the photo albums, posting plenty of pictures.



If you haven't visited yet, simply go to <http://community.wilkes.edu>. Check out the latest University news and alumni events. List an online classified ad. Update fellow alumni on your latest family addition or career advancement. Post pictures of friends and family. Even buy Wilkes merchandise online.

"I'm really excited about The Colonel Connection," said user George Pawlush '69, vice president of public relations at Greenwich Hospital in Greenwich, Conn. and first vice president of the Alumni Association. "It has potential to greatly improve communications between the University and our alumni. During my Wilkes student days in the late 1960s, I was especially involved in Circle K, which at that time was one of the bigger clubs on campus. Over the

last few months through the Circle K subgroup on the Connection, I have been able to reconnect with former fellow club members. For some of these exchanges, it was the first time we had been in touch in nearly 35 years."

Colonel Connection Stats:

Hits	32,456
All logins	5,375
Unique logins	1,660
Event registrations	414
Career Center	
Webcards activated	169
Class Notes	30
Friends Lists created	155
Member emails	232
News articles opened	1,097
Photos (individual)	126
Photo albums	47
Group photos	2

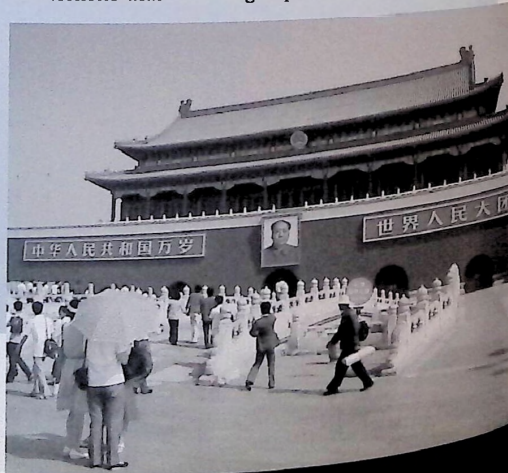
Join Wilkes Alumni for Beijing Tour

Explore China's Great Wall and the ancient city of Beijing with fellow Wilkes alumni during an eight-day tour departing March 13, 2007.

Fly a kite along the 3,700 miles of the Great Wall as you marvel at this feat of ancient engineering. Visit the infamous Tiananmen Square, the Forbidden City and Summer Palace. Watch locals during their morning Tai Chi at the Temple of Heaven and see the famous pandas at the Beijing Zoo. Navigate narrow streets and alleys in a rickshaw, visit a school and its pupils and meet a local family to learn about their history and way of life. Travel through the Valley of the Ming Tombs and enjoy the Peking Opera.

Optional tours include an antique furniture factory where Chinese craftsmen build only with joints, no nails or glue. Or you may choose to visit Xian and the Terra-Cotta Warriors Museum or take part in the world-famous Beijing Acrobatic Show.

The price per-person is \$1,719 for twin, \$1,869 for single and \$1,709 for triple occupancy. The cost includes round-trip airfare from Allentown Airport, hotel transfers and departure tax. For more information, contact Michelle Diskin, associate director of Wilkes University Alumni Relations at (570) 408-4134 or michelle.diskin@wilkes.edu. Or visit www.collettevacations.com/group/Wilkes/china.cfm.



In Memory/In Honor: Emilio A. Marianelli '73 Made a Great Investment

Emilio Marianelli '73 was looking for ways to honor Dr. Umid Nejib, who passed away in 2002 after serving Wilkes for 37 years. Dr. Nejib was a professor of electrical engineering, dean of the school of science and engineering and was responsible for the development and accreditation of the Doctor of Pharmacy program.

"Let's keep Dr. Nejib's vision and memory fresh for future generations," was what Emilio had in mind when he made a generous gift to increase the Nejib Scholarship Fund.

The funds of an endowment will never be exhausted. Earnings from these invested funds will provide talented students with a chance to realize their educational dreams. Ninety-seven percent of our undergraduate students receive financial assistance from Wilkes, and this support often makes the difference whether a student can attend or not.

Why not follow Marianelli's lead to increase Wilkes' endowments when you want to make a gift in memory or in honor of a special person in your life?

Learn more by calling the Development Office at 570-408-4300.

IRA News: Take Advantage of the New Tax Code Changes

In August 2006, President Bush signed into law the Pension Protection Act of 2006. This bill contains a two-year IRA Charitable Rollover provision that will allow people age 70 or older to exclude up to \$100,000 from their gross income for a taxable year for direct gifts from a traditional or Roth IRA to a qualified charity. This provision is available until Dec. 31, 2007.

Explore planned gifts privately with our new online gift calculator that provides deductions for all types of planned gifts. Visit: www.wilkes.edu/pages/1518.asp.

Let your success live.

Donate to the Wilkes University Gift Annuity program and share your success with tomorrow's leaders.

While there are many benefits to a Gift Annuity — *fixed and secure income for life, attractive rates, and tax relief* to name a few — the greatest benefit is the difference you help to make in the future of our students.

Call 570-408-4309 to get more information.

www.wilkes.edu

Sample Rates*

- Age 70 — 6.5%
- Age 75 — 7.1%
- Age 80 — 8.0%
- Age 85 — 9.5%

* Single life rate example shown and subject to change.

Fenner Quadrangle and Residence Halls Get Facelift

As part of the university's 20-year master plan to create a green, urban campus, an additional 3.2 acres of green space is being added to the Fenner Quadrangle, making "the quad" a more inviting, student-friendly place. Expansion and landscaping of the green space is expected to be completed by the end of the year.



The campus is getting greener thanks to expansion of the Fenner Quadrangle.

The Evans Hall parking lot was removed to make room for greenway expansion. Parking has shifted to the new University Center on Main parking garage in the 100 block of South Main Street. Another element to the project is construction of a pergola, a canopied walkway, made possible by a gift from alumnus Clayton Karambelas '49 and his wife Theresa. Read more about the pergola on pages 16-17.

Wilkes Purchases High-Rise Apartment Complex

Wilkes University officials recently announced they have reached an agreement of sale to purchase University Towers, a 130-unit apartment building located at 10 E. South Street in Wilkes-Barre. Wilkes will purchase the building for \$8.2 million from JPJR Ten E. South Tower, LP, an affiliate of Trivest Realty Group, LLC of Washington Crossing, Pa.

The acquisition will solidify the university's presence as an anchor to the downtown business district. In line with its master and strategic plans, the university will eventually reduce its presence in the neighborhoods south of the campus and support downtown economic development while creating increas-

ingly advantageous living/learning environments at the university.

"This is an extraordinary move for Wilkes," said Dr. Tim Gilmour, Wilkes president. "Wilkes will serve its students better, enhance residential living options and further the reputation that Wilkes-Barre is a college town."

About half of the University Towers' 205 occupants are students, according to Scott Byers, vice president for finance and support operations. "There will be absolutely no changes in the mix of tenants in the near future," he said.

Wilkes has had students residing at University Towers for the past three years in what Dr. Paul Adams, vice president for

students affairs, has described as "a remarkably successful living arrangement that has blended generations in the same living space."

"This was a particularly attractive option for the university since University Towers is the preferred living space for our on-campus students," Adams said. University Towers currently has the capacity to house 405 students, doubling the number of occupants and further increasing the number of residents living in the Wilkes-Barre business district. The university does not anticipate reaching maximum occupancy for several years.

Wilkes will be able to offer student programming to a much larger audience, including support for mentoring and studying activities that are intended to increase student success. The college will no longer need to rent residential space from private landlords and will sell several university-owned properties, now used to house students.

Wilkes will spend \$1.7 million in renovations to health and safety, HVAC and elevator systems, among other improvements to the building, Byers said.

According to Marty Williams, vice president for development and alumni relations, part of the transaction includes a \$3 million bargain sale gift to the university, resulting in the difference between the fair market value and the sales price being handled as an increase in the university's real estate assets. "This is a perfect example of how donors can convey real estate to a charity," Williams said.

Sordoni Art Gallery to Feature Work of International Photojournalist

Hands of a Displaced Sudan: Cry for Compassion, a visual narrative of war, genocide and humanitarian crisis, movingly captured by journalist Ryan Spencer Reed, will be on view at the Sordoni Art Gallery from Jan. 15 to mid-March 2007. Reed will be on campus to open the exhibition in January.

In the wake of nearly 22 years of civil war, the Southern Sudanese population lays shattered across the East African landscape. More than 2.5 million lives have been lost, and another five million, internally and

Reed has visited the Darfur region of Sudan a number of times photographing and interviewing those involved on all sides of the conflict, and writing his own eyewitness dispatches. This project, currently being considered for exhibition by a number of university and college museums and galleries around the country, including Dartmouth, Harvard, Brown and others, will be featured first by the Sordoni Art Gallery.

Wilkes also is partnering with King's College to bring prominent speakers, officials from humanitarian organizations and political action groups, films and other



Powerful images from Ryan Spencer Reed's *Hands of a Displaced Sudan* will be on exhibit at the Sordoni Art Gallery in January.

externally, have been displaced by this war. Since January 2003, a new conflict has been developing in Western Sudan, where, using many of the same tactics—terror, insecurity and genocide—the Sudanese government is once again responsible.

related educational programs to both campuses.

For more information, contact Ronald Bernier, director of the Sordoni Art Gallery at ronald.bernier@wilkes.edu.



An artist rendering depicts Delaware and Chesapeake residence hall renovations.

The project coincides with a \$1.5 million renovation of the Delaware and Chesapeake residence halls, which are located at the north end of the quad. The renovation project will add 12 beds, a sprinkler system, central air conditioning, a center skylight and Wi-Fi capabilities, plus new furniture, lighting and windows to the halls. While under construction, the university is leasing housing around the Wilkes campus until the buildings reopen for the 2007-08 academic year. Other residence halls are slated for improvement or renovations over the next 15 years.

University Towers will house more than 400 students.

Students Have New Venue for Entertainment

Wilkes-Barre Movies 14 opened on June 30 in downtown Wilkes-Barre. The theater anchors the \$31 million entertainment/residential/retail complex along South Main and East Northampton streets.



Senior Sarah Doman and junior Abby Goodman take in a movie at the new 14 screen theater in downtown Wilkes-Barre.

The theatre offers movie-goers nearly 2,800 seats in its 14 auditoriums, each with stadium seating, rocker chairs and Dolby digital stereo. Some theaters also offer digital projections.

"People love the theater," says David Phillips, chief operating officer for owner P/C Theatres Management Corp. based in Reisterstown, Md. "It's a little bit more difficult than just the standing suburb setup, but the people seem to be doing very well with it."

The theater welcomed 15,000 people in the first five days of operation. Phillips believes two high-powered searchlights on the roof and three hours' free parking in three nearby parking facilities will encourage people to attend regularly.

Exclusive Website for Prospective Students Featured in USA Today

Wilkes University's latest marketing tool called HelloWilkes, a special website created for accepted students to become familiar with the university through e-conversations with faculty and current students, was featured this summer in *USA Today* and *Philadelphia Business Journal*.

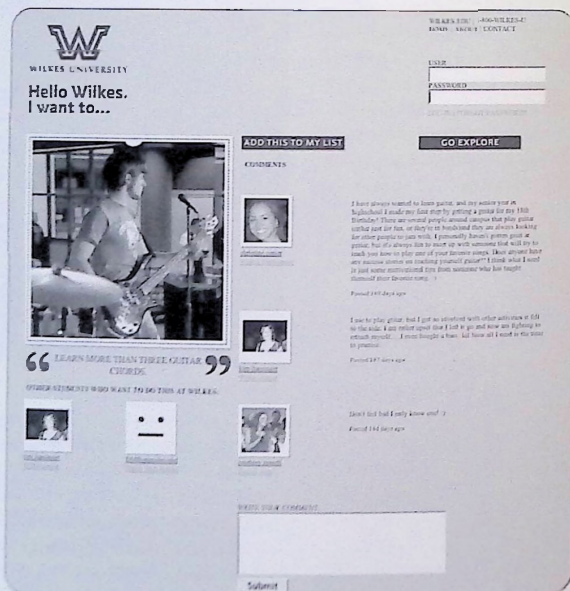
Social networking Web sites—like MySpace or Facebook—are essential to the care and feeding of the college student.

Hoping to capitalize on that, Wilkes University introduced HelloWilkes this year to its accepted freshman class. A cross between MySpace and a weblog, HelloWilkes is an exclusive community for

incoming freshmen to get to know other freshmen, strike up conversations with upperclassmen and faculty, and get a glimpse of daily life on the Wilkes campus.

The Web site was created to replace the traditional admissions office "closing picce" that is sent to high school students who have been accepted, but have not made the decision to enroll. The site has proven to be much more popular—not to mention cheaper and more effective.

HelloWilkes averages 6,900 hits per day—more than 200,000 hits total so far—with the average visitor going back nearly 40 times and staying on the site for an average of six minutes per visit.



On August 15, the HelloWilkes site had 1,000 hits. The day this *USA Today* story ran, the number of hits jumped to 25,000.



Colleges Connect Students Online

BY JANET KORNBUM, USA TODAY

Andrew Seaman has a few jitters about going to college for the first time later this month. But upperclassmen already have made him feel better—and he's never even met them face to face.

Seaman, who will attend Wilkes University in Wilkes-Barre, Pa., has inquired about student politics and dorm living on HelloWilkes, a private network the school created this year for incoming freshmen.

"The other kids were able to put my mind at ease that the dorm rooms are livable," says Seaman, 18, of Forest Hill, Pa. They've also doled out advice on how to get involved in student government.

Without the site, "I would've been more nervous," he says. To better communicate with a generation that socializes online on websites such as MySpace and Facebook, many colleges are launching into the social networking frenzy.

More than a dozen so far have created private sites with features from profiles to bulletin boards and information areas.

"In a year or two virtually every college will have something like this," says Steve Jones, communications professor at the University of Illinois, Chicago.

The reason is "obvious," he says. "This has become such a familiar mode of communication for teenagers; it's basically meeting them on their own turf. It makes it more comfortable to get information they might not otherwise get."

Administrators say they use the

sites both to market their schools to potential students and to put new freshmen at ease.

Students find out about the sites in a variety of ways — from e-mail and postal mail invitations to orientations. Most schools feature prominent links promoting the sites on their main university websites.

"We realized that in order to communicate truly effectively to students we needed a medium that they are already accustomed to," says Mark Sikes, assistant dean of students at the College of William & Mary in Williamsburg, Va., which created a site for freshman this year.

Along with message boards that allow students to connect, the site acts as a clearinghouse for all sorts of information on everything from classes to regional culture and events.

College networking sites vary. Some are little more than message boards, others have areas where students can write full profiles and communicate with each other like they do on MySpace and Facebook.

And judging by the traffic at some sites, students are using them. At William & Mary, for instance, 1,500 of the 1,600 newly admitted students have logged on in the past month, Sikes says.

Other schools with new networking sites this year include Harrisburg (Pa.) University of Science and Technology; Marietta (Ohio) College; Wellesley (Mass.) College; Purchase (N.Y.) College and Seton Hall University in South Orange, N.J.

"Universities need to be where people are," says Cheryl Brown, director of undergraduate admissions for Binghamton (N.Y.) University, which also has a new site.

Seaman and his friend, Stephanie Gerchman, also an incoming Wilkes freshman, say HelloWilkes makes connections and answers questions. Gerchman, for instance, got advice from upperclassmen to choose psychology as her minor.

Some kids like the idea of "advanced networking" so much

that they are even taking a do-it-yourself approach.

Gerchman says she prefers MySpace and Facebook because they allow her to directly contact friends. HelloWilkes has an area to post personal profiles and to weigh in on predesignated topics, such as dorm living and studying, but there's no built-in spot for e-mail addresses or instant-messaging names.

So she created her own space on MySpace, based on the HelloWilkes site, open to incoming Wilkes students. She also uses Facebook, and already has a movie night planned for the beginning of the school year with another Wilkes student she met there.

Some colleges use college-oriented Facebook rather than building their own sites.

"Why re-invent the wheel?" says Christopher Oertel, director of residential life for the College of Saint Rose in Albany, N.Y. He created a Facebook page for his department to reach out to incoming freshmen.

"We're taking advantage of what's provided for us."

Some worry that creating their own online networks could create legal problems. "If we exercise prior review or censorship, we're going to invite a whole new series of litigations," says Michael Bugeja, director of the Greenlee School of Journalism and Communication at Iowa State University in Ames.

But by and large, students' contributions are valuable, administrators say.

"If you want the authenticity and true voice of the students, you have to be willing to take the bad with the good," says Binghamton's Brown. "On occasion, something sneaks in where we go, 'gulp.' And so far we have been pretty open about letting our students' comments stand as is."

For students, these really are social connections, she says. "If we want to connect with our students and have them connect with each other, we need to be taking advantage of this medium."

Wilkes Inducts 14th Class Into Athletics Hall of Fame

BY JOHN SEITZINGER

THE WILKES UNIVERSITY ATHLETICS Hall of Fame inducted its 14th class in a ceremony on Saturday, Oct. 8 on the Wilkes campus.

The Hall of Fame was established in 1993 to honor those players, coaches and other non-participating individuals who have made outstanding contributions to athletics at Bucknell Junior College, Wilkes College and Wilkes University.

Neil Dadurka '57

The late Neil Dadurka was a three-sport participant during his collegiate days at Wilkes.

On the field, Dadurka garnered four varsity letters in wrestling and helped the team post a 26-11-2 record. As a senior, he was one of the Colonels team captains and led the unit to its first Middle Atlantic Conference (MAC) championship. Dadurka had an individual record of 8-3 during his final campaign, playing a critical role as the squad posted their first unbeaten season by going 10-0-1.

Dadurka was also a four-year member of the Colonels football team, and played on the first varsity golf team at Wilkes in 1957.

Dadurka's leadership skills were evident. He served as the president of the senior class in 1957, and was the president of the Letterman's Club. Dadurka was also the vice president of his sophomore class in 1955 and

was selected to Who's Who in American Colleges and Universities.

Karen (Olney) Hazleton '78

Karen (Olney) Hazleton was a four-year member of the women's basketball team from 1974 through 1978, while also earning two varsity letters in softball during the 1977 and 1978 seasons.

On the basketball court, Hazleton was a top point producer during each of her four seasons. She set what was then a school record by amassing 731 points during her basketball career. As a sophomore, she earned a berth on the Northeastern Pennsylvania Women's Intercollegiate Athletic Association all-star team after leading Wilkes with 212 points. She was voted as the Lady Colonels Most Valuable Player in both 1976 and 1978, and served as the team's captain during her senior year.

Hazleton also excelled during her two seasons on the softball diamond. A pitcher for the Lady Colonels, she was named to the Northeastern Pennsylvania Women's Intercollegiate Athletic Association all-star squad as a senior and was voted the team's Most Valuable Player.

Kim Kaskel '96

A four-year member of the field hockey team from 1992 through 1995, Kaskel helped Wilkes win Freedom League titles in 1993, 1994 and 1995.

Kaskel's play was instrumental in the Lady Colonels claiming Eastern College Athletic Conference (ECAC) Mid-Atlantic titles in both 1993 and 1994. In 1995, she led Wilkes to an overall record of 13-5 and the team's first appearance in the NCAA Division III Tournament.

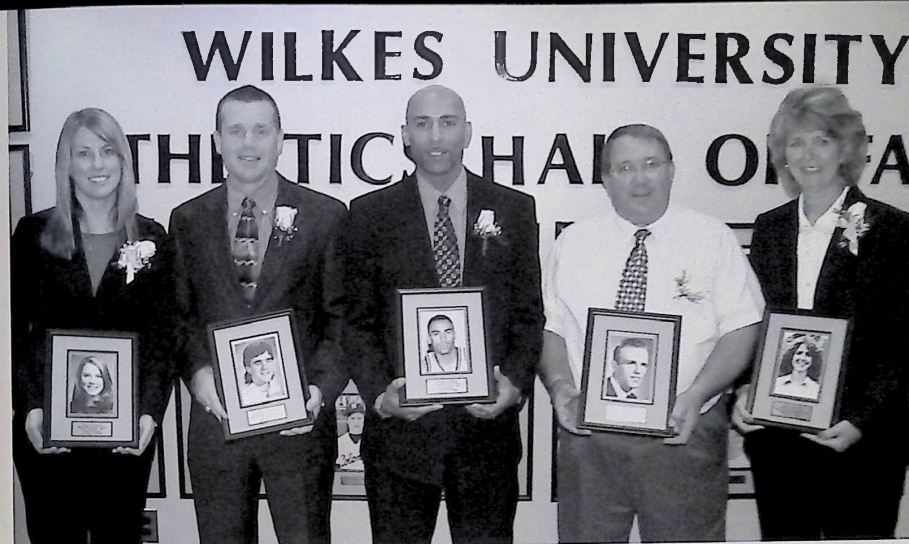
A forward for the Lady Colonels, Kaskel ranks as the all-time leader in both goals and points at Wilkes. She scored an amazing 52 goals during her career, while also amassing 128 points. Kaskel was named to the College Field Hockey Coaches Association (CFHCA) All-American second team in 1995 and was a first team CFHCA Regional All-American in 1994 and 1995.

Kaskel's individual accolades also include three Freedom League Most Valuable Player awards. Additionally, she was named to the All-Freedom League first team and garnered the Wilkes Female Athlete of the Year award in both 1995 and 1996. An outstanding student, Kaskel was named to the Middle Atlantic Conference Academic Honor Roll during each of her four years.

Chris Parker '96

Parker started on the basketball court for Wilkes from 1993 through 1996, helping lead Wilkes to four consecutive MAC playoff berths and an overall record of 93-19.

Parker's play was critical in leading the Colonels to the NCAA



Inductees into the Wilkes Athletics Hall of Fame pose for a photo during Sunday's ceremony. Pictured from left to right are: Kim Kaskel '96, Bob Wachowski '89, Chris Parker '96, Bruce Dadurka, nephew of the late Neil Dadurka '57, and Karen (Olney) Hazleton '78. Missing from the photo is Alan Zellner '72.

Division III Tournament in the 1994-95 and 1995-96 seasons.

Parker ranks fifth on the all-time scoring list at Wilkes with 1,504 points, while also ranking 13th on the rebounding list with 563. Parker still holds Wilkes records for steals in a game with eight, and steals in a season with 80. He also holds the single-season mark for field goal attempts with 506.

A team captain during both his junior and senior campaigns, Parker earned first team All-Conference honors in 1994-95 and second team All-Conference accolades in 1995-96. Parker also earned a berth on the All-ECAC second team as a senior, and was a member of the NCAA All-Sectional Team in 1994-95.

Bob Wachowski '89

No one in the history of Wilkes University athletics could energize and unite a student body as effectively as Wachowski. Affectionately known as "Colonel Bob," Wachowski spent four seasons as the mascot at Wilkes, serving in that capacity from 1987 through 1989,

and again from 1992 through 1994.

A true ambassador of athletics at Wilkes, Wachowski always found a way to make a grand entrance. Many times he would arrive to an athletic event riding his eight-foot unicycle. Other times, he might be seen riding his go-cart with a dummy dressed in opponent's colors dragging behind. He arrived at Homecoming one year riding a horse, while yet another time he landed on Ralston Field in a helicopter.

Wachowski would even show up at opposing sites, unicycle and all, to provide inspiration during a key game.

Wachowski was so popular that he was asked to serve as the student speaker at Commencement in both 1989 and 1994. He also served as the student speaker at the dedication of the Armand C. Matis Center in 1989, and was awarded the Athletic Service Award in 1984.

Alan Zellner '72

Zellner was a four-year standout on the wrestling mat at Wilkes and helped the Colonels capture

four Middle Atlantic Conference championships.

During his four seasons on the mat, Zellner posted a dual match record of 38 wins and only six losses. He broke the Wilkes record for dual pins in a season with 18, while also setting a record for dual pins in a career with 21. Zellner won individual Middle Atlantic Conference titles in 1970, 1971 and 1972, and was named the MAC's Outstanding Wrestler in both 1971 and 1972.

In each of his four seasons at Wilkes, Zellner qualified for the NCAA Championship. He placed 9th in 1970, 8th in 1971, and earned All-American status by posting a fourth-place finish in 1972.

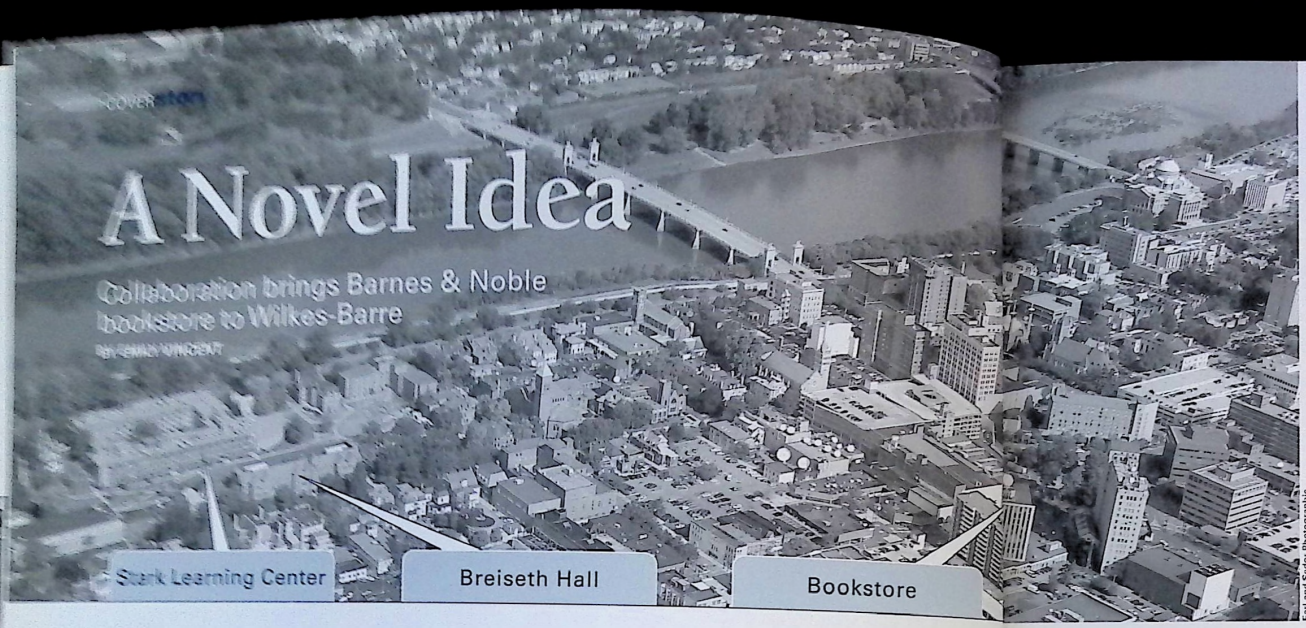
Zellner served as the head coach of the Wilkes wrestling program from 1983 through 2003 after spending six seasons as an assistant coach. He amassed a record of 94 wins, 100 losses and one tie, while leading Wilkes through the transition from Division I to Division III status. **W**

COVER STORY

A Novel Idea

Collaboration brings Barnes & Noble bookstore to Wilkes-Barre

BY ERIC W. WINGERT



This aerial photo of Wilkes-Barre City shows the location of Barnes & Noble in proximity to the Wilkes campus.

COVERstory

King's and Wilkes involved the Greater Wilkes-Barre Chamber, and, within weeks, the group put together a proposal to determine positive feedback," Byers said. Barnes & Noble and Follett, both big players in the college bookstore market, were the two finalists for the project.

We all got excited about bringing a store to Wilkes-Barre. We saw the vision that Dr. Gilmour and Father O'Hara had.

"Barnes & Noble is interested in putting stores in communities that want us," he continued. "We liked how the two college presidents came together. We want to build relationships and have partnerships. We sensed that with Dr. Gilmour and Father O'Hara, and wanted to be a part of it."

Securing a Retail Giant

The call from President Gilmour regarding the opportunity to bring a bookstore to Wilkes-Barre was received by Paula Eardley, vice president of campus relations at Barnes & Noble Booksellers. Eardley visited Wilkes-Barre and went back to Barnes & Noble with enthusiasm for the project.

College officials and Chamber members said Barnes & Noble College Booksellers was selected to operate the joint bookstore because it brings a wealth of experience and expertise to the table. "Barnes & Noble is a world-class retailer and an excellent college book

THE IDEA FOR A JOINT BOOKSTORE to serve both Wilkes University and King's College has been brewing for more than a decade. However, the timing wasn't right...until now.

In October, Barnes & Noble College Booksellers, Inc. opened its doors to its newest bookstore in downtown Wilkes-Barre. This \$2.4 million project was made possible by a partnership of the two colleges and the Greater Wilkes-Barre Chamber of Business and Industry, along with help from the city of Wilkes-Barre and Luzerne County.

Located at 7 South Main Street in the Chamber's Innovation Center @ Wilkes-Barre, the "academic super-

store" operates as the joint campus bookstore for Wilkes and King's, and serves the needs of the general public. The bookstore occupies two floors of the former Woolworth's five-and-dime store building, creating approximately 20,000 square feet of retail space.

The first floor of the historic building looks like a traditional Barnes & Noble store with newspapers, magazines and a wide selection of books. It also includes an 84-seat, full-service Barnes & Noble Literary Cafe with Starbucks coffee, lounge chairs and tables, and a spirit shop offering Wilkes and King's merchandise and apparel. The lower level of the building is where

college students can find textbooks, school, office and dormitory supplies, and anything else needed for college life.

The bookstore project boasts a few firsts. "This is the first time that two colleges collaborated on a project like this, making it the first joint campus bookstore for Barnes & Noble," said Fred Lohman, senior vice president of real estate for the Greater Wilkes-Barre Chamber of Business & Industry and '76 Wilkes alumnus. The bookstore also is Barnes & Noble's first downtown location in a Pennsylvania city other than Philadelphia and Pittsburgh.

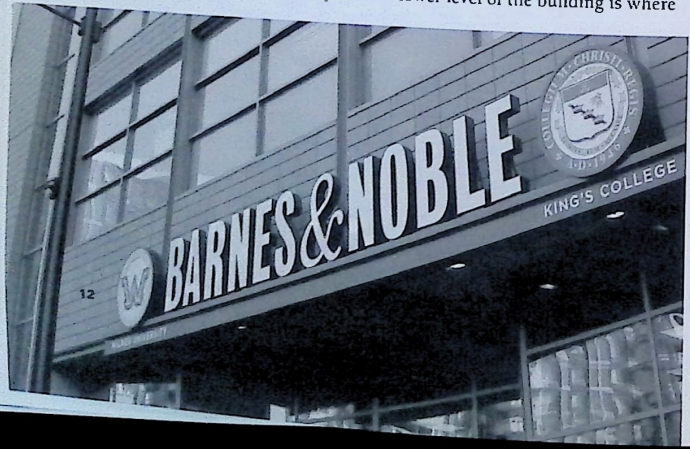
Recipe for Success

"The idea for a joint bookstore has been around a long time in one form or another," said Larry Newman, vice president of economic and community development for the Greater Wilkes-Barre Chamber of Business & Industry. "It made sense to combine the two campus bookstores and move to common ground in the heart of downtown. The circumstances were never

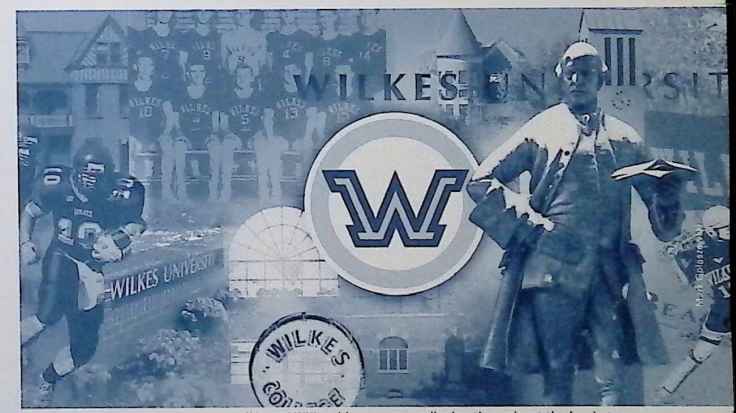
correct before. It was not the right location or the right time."

Dr. Tim Gilmour, president of Wilkes University, said it took the right mix of people to make the bookstore happen. "There are so many groups that needed to come together, and this time, we were able to do that," Gilmour said. "Clearly, the president of King's [Rev. Thomas O'Hara] deserves a tremendous amount of credit, along with the mayor of Wilkes-Barre, the Chamber and Barnes & Noble. We had a lot of people working together and collaborating effectively. It was a recipe for success."

The idea to pursue a joint campus bookstore downtown was revived late summer 2005. "We [Wilkes] broached the idea with King's College and the Chamber," said Scott Byers, vice president for finance and general counsel for Wilkes University. "We each had a bookstore, and we didn't think we could provide the level of support for students, faculty and staff with those arrangements that we could with a joint bookstore."



Mark Golanzewski



Murals depicting athletics, campus life and Wilkes history are on display throughout the bookstore.

"Paula got us all excited about it," said Patrick Maloney, executive vice president of Barnes & Noble College Booksellers. "It was a joint proposal to provide a campus bookstore to serve both Wilkes University and King's College. I visited the site, and

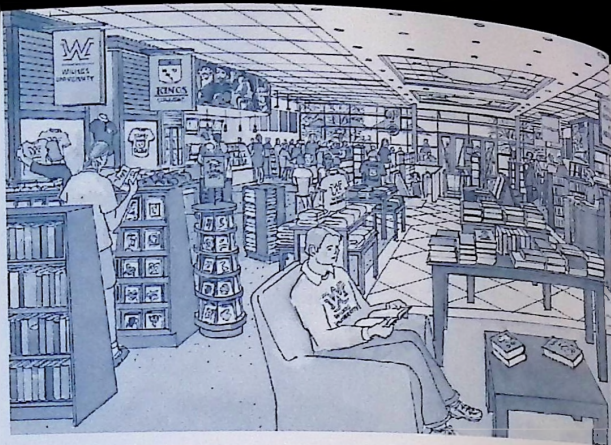
supplier," Gilmour said. "The company is so well-known and well-respected, and it will draw a lot of students to downtown Wilkes-Barre. Having Barnes & Noble here is key to the city's recovery strategy."

Maloney explained that the term "academic superstore" is used to describe a store that is a mixture of a traditional Barnes & Noble store and a college bookstore. "An academic superstore is typically located on the edge of campus," he said. "It brings the university and community together in a different way, improving relationships between the two. It's a wonderful vehicle to create that bridge between 'town' and 'gown.'"

"This is the largest single retail project in Wilkes-Barre in 30 years. It's a huge step for downtown Wilkes-Barre."

Barnes & Noble currently operates more than 570 college bookstores. Of those, nearly 50 are academic superstores like the one in Wilkes-Barre. The Barnes & Noble bookstore in Wilkes-Barre joins an impressive list of colleges and universities with academic superstores on the edge of campus or close to town, including Southern Methodist University, University of Pennsylvania, The Ohio State University, Yale University, Georgia Tech, DePaul University and Dartmouth College.

"The academic superstore that Barnes & Noble brings to Wilkes-Barre is centered around the needs of the campus with a mix of retail to it,"



Byers said. "The former bookstore on campus was 3,000 square feet. The Barnes & Noble bookstore will be six times larger at about 20,000 square feet. The company brings an expertise that is second to none. It is a well-recognized brand known for its quality."

Community Reactions

The downtown bookstore is a key piece in the overall strategy to revitalize downtown, and the community has been embracing it. "The reaction has been unbelievably positive," Lohman said. "This is the largest single retail project in Wilkes-Barre in 30 years. Barnes & Noble brings a nationally recognized retail store to town, adding to part of the fabric of downtown. It's a huge step for downtown Wilkes-Barre."

"For a long time, people asked why downtown Wilkes-Barre is not more of a college town," Newman said. "There are 6,500 college students here, but traditionally, there was a divide between 'town' and 'gown.' That divide is rapidly disappearing."

Gilmour said feedback from students, faculty and staff when the bookstore was officially announced in August 2006 was very positive.

"Overall, there is genuine enthusiasm to having Barnes & Noble

downtown and being our college bookstore," he said. "Students will have to walk a little farther to get their books, but they'll be walking there a lot as other businesses open. Once they walk the two blocks and come to the bookstore, they'll enjoy it."

Jenna Strzelecki, a senior business administration student and president of student government at Wilkes, said the new Barnes & Noble bookstore will help current and future Wilkes students and make a good addition to the city. "It gives students the opportunity to get down to the center of Wilkes-Barre and see what's beyond the Wilkes campus, giving them a different perspective of the city," she said. "Since it's a joint bookstore, it gives Wilkes students a chance to get to know King's people more and vice versa. There is a little bit of a rivalry between the two schools because we're located so close, but the bookstore is a good idea."

The bookstore helps faculty and members of the community as well as students, Maloney said. "A tremendous amount of books are available to them," he said. "It gives them a place to come together. Some faculty members may schedule time to meet with students at the bookstore instead of in their offices. The bookstore also creates a

place where the community could go and congregate. It does much more than provide required educational materials."

In addition to offering books, magazines and school merchandise, the Barnes & Noble location provides another positive place to hang out in Wilkes-Barre. "Approximately 14,000 people live and work downtown," Byers said. "People can go there at lunchtime, shop and have a cup of coffee. It's another level of service that couldn't have happened without this collaboration. The bookstore helps to further revitalize Wilkes-Barre by giving more things to do during the week and weekend for students and members of the community."

Competitors Collaborate

When discussing this new bookstore, the word heard most often from Wilkes and King's administrators, Chamber officials and



Rev. Thomas J. O'Hara, C.S.C., King's College President, and Wilkes President Tim Gilmour recognize the value of collaboration in downtown revitalization.

Barnes & Noble executives is collaboration. Despite being in-city rivals who compete for students and wins on the sports field, Wilkes and King's were able to come together. "Collaboration was crucial," Gilmour said. "We had a real desire to create this bookstore and felt it was a real value to our students. We [Wilkes] couldn't do it alone, but we [Wilkes and King's] could do it together. Both of us can be so much stronger if we collaborate."

Setting aside the rivalry was not difficult, Byers said. "The bookstore is part of the first wave of opportunities to collaborate and benefit both universities," he said. "Students at Wilkes and King's interact a lot now, but this helps solidify those interactions."

A New Wilkes-Barre

Gilmour believes that the project is much more than a bookstore; it is part of an effort to revitalize downtown Wilkes-Barre. "There is a definite feeling that this will be a major step forward in the city's revitalization," Gilmour said. "With Barnes & Noble moving in, it signals to other retailers that Wilkes-Barre is a vibrant town."

Strzelecki said the bookstore is good for the city and its future. "Economically for the city, it was needed," she said. "The new bookstore will draw a lot more people in from surrounding areas to Wilkes-Barre. By bringing people in, it gives Wilkes-Barre a jumpstart for revitalization and could help bring in other businesses."

Byers cites three reasons this new bookstore is

important to Wilkes and the city. "First, it's Barnes & Noble—we attracted a world-class retailer," he said. "Second, we couldn't have done this on our own. Third, the bookstore serves to further revitalize the city, which is critical to the long-term success of the city and the university. We can't act as an island and not be active with our city."

Maloney said he is happy to be a part of the redevelopment of the city. "I think the bookstore is a wonderful thing for Wilkes-Barre," he said. "These two institutions of higher education located half a mile apart were able to come together and make this happen. The store will celebrate the rebirth of Wilkes-Barre and the two schools. I hope it's a place that the community takes pride in."

"I'm very happy to be a part of this. I'm very proud that we [Barnes & Noble] were selected. And I'm very optimistic about the bookstore and the future of Wilkes-Barre."

Wilkes alumni who have not returned to Wilkes-Barre in a few years may be surprised at how the city has changed. "The difference is amazing, and alums will be pleasantly surprised even if their last visit was three or four years ago," Gilmour said. "You have a Barnes & Noble, a 14-screen movie theater and night club that have changed the character of South Main Street significantly. South Main is much more lively and attractive."

Lohman said alums will see a new Wilkes-Barre that they haven't seen before. "They'll see a cleaner, brighter and vibrant Wilkes-Barre that they haven't seen in decades." ■

Karambelases Donate Piece of Ancient Greece

Special couple's vision for campus is becoming a reality

BY JULIE UEHARA

THE WILKES UNIVERSITY CAMPUS has become more beautiful thanks to Clayton '49 and Theresa Karambelas.

As the focal point of Wilkes' new Greenway project, which also includes landscaping, a formal walkway and a volleyball court, Clayton and Theresa have donated a beautiful pergola. Located next to the Alumni House and behind Eppstein Hall, construction of the pergola will begin later this year with trelliswork and Greek-style columns that will be filled with colorful flowers and climbing vines in the spring.

"The pergola is such a nice anchor for the Greenway," Clayton said. "As a classic Greek structure, it is a fitting gift from my wife, Theresa, and I since my family is from Greece and her family is from Italy, where pergolas began."

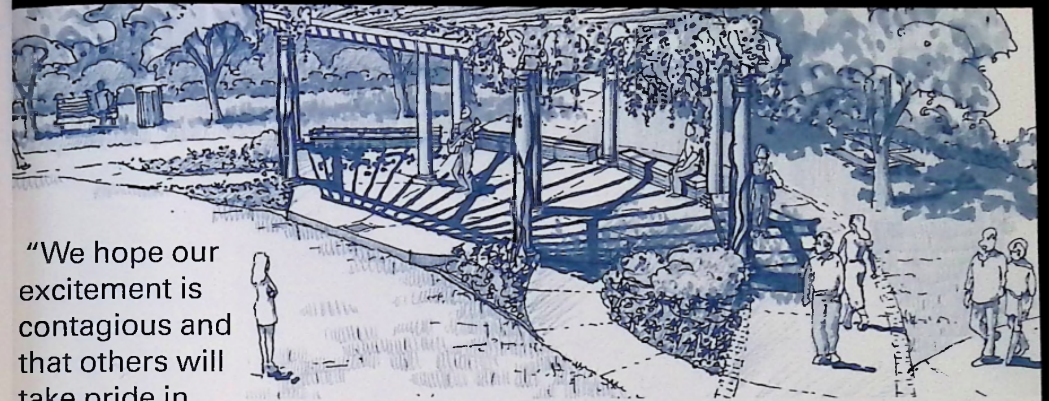
A rare architectural structure for college campuses, the Karambelas pergola is even more unique because it features a stage for outdoor theatrical performances, concerts or gatherings. The pergola is approximately 56 feet long and 15 feet wide and can be used for an unlimited number of activities—from weddings to relaxing in the shade.

"As we worked with the architect to develop the construction plans, we wanted to take the idea of a pergola and modernize it so students would take full advantage of it," Theresa said. "We wanted it to be a quiet place to contemplate and escape but also be in the heart of the campus. Since we didn't want it to just occupy space, I think incorporating the stage was the best idea. That way, the uses for it are unlimited."

Marty Williams, vice president of advancement, agrees. "The concept of the Greenway was to improve the space around the Alumni House and create an environmentally friendly, ceremonial place," Williams said. "The pergola is a great addition to the university and is a strong reminder of the power of architecture and ideas."

History of Giving

This is not the first time Clayton and Theresa have given back to Wilkes in a significant way. They made a major gift to the Henry Student Center in 1999 and a state-of-art electronic marquee in 2003 to announce campus events. Prominently located outside of the Dorothy Dickson Darte Center for the Performing Arts and near the entrance to the student center, the marquee keeps



The pergola, shown here in an artist's rendering, will be located near Delaware and Chesapeake halls.

"We hope our excitement is contagious and that others will take pride in, become a part of and come back to Wilkes to see what's been happening."

students on campus and even drivers on River Street apprised of the latest happenings around campus and the community.

"I thought the sign was a good idea because if I wanted to know what's happening around Wilkes, other people probably do, too," Clayton said. "Theresa and I live only a mile or so away from campus, and since many events are for the community as well as the students, we wanted to stay informed. And, since it's run by a computer, it can be conveniently updated whenever necessary."

An active member of the alumni association and the John Wilkes Society, this proud alumnus donates money to Wilkes each year. "As a Wilkes graduate and part of the local community, I am happy to give back," he said. "After all, the university can't exist without alumni donations."

"All Wilkes students and faculty are deeply indebted to Clayton and Theresa for their generosity and caring spirit," Williams said. "Part of my role at Wilkes is to foster

relationships with alumni, and Clayton and Theresa have been leaders and role models for alumni for a long time. I'm grateful to know them."

How It All Started

Since his undergraduate years, Clayton has been extremely active at Wilkes. Graduating in 1949 with a bachelor's degree in commerce and finance, Clayton was president of Student Council and of the Thespians. He also was an athlete. He was on the university's first wrestling team, first tennis team and was the coach and co-captain of the first swimming team.

"And he's still a social butterfly," Theresa added.

Now married 39 years and retired, Clayton and Theresa met while working next door to each other. Although Theresa didn't attend

Wilkes, through her husband she eventually formed an affinity for the university: its wrestling team and ultimately all things Wilkes.

Community Involvement

In addition to being involved at Wilkes University, Clayton and Theresa also are active within their community and the Greek Orthodox Church in Wilkes-Barre.

Clayton has always lived within one mile from the university. For several years after college, he ran a restaurant and candy shop that his father and uncle started in 1923 called The Boston Restaurant and Candy Shop. After he sold the business in 1973, he started C.K. Coffee Service and continued to grow that company for more than 30 years. With these businesses and his involvement with charities, Clayton is a prominent member of the community.

"We're really excited for the new things happening at Wilkes and in Wilkes-Barre," Theresa said. "We hope our excitement is contagious and that others will take pride in, become a part of and come back to Wilkes to see what's been happening. We'd like to think we're lighting a fire under the alumni in some small way and adding a new dimension to the life of the students on campus." ■



Theresa and Clayton Karambelas '69 stroll through the pergola construction site.



Clayton Karambelas, class of 1949.

Elevating Wilkes to Greatness

REPORT OF GIFTS: GIFTS RECEIVED JUNE 1, 2005 THROUGH MAY 31, 2006

REPORT OF GIFTS TABLE OF CONTENTS

Giving by Constituency	Pages 20-24
- TRUSTEES & TRUSTEES EMERITI	
- UNIVERSITY FAMILY	
- COMMUNITY BUSINESSES & FOUNDATIONS	
- FRIENDS, PARENTS, GRANDPARENTS & ALUMNI	
Max Rosenn Lecture Series in Law and Humanities Endowment	Pages 24
Giving by Class	Pages 25-37
CLASS OF 1935 THROUGH CLASS OF 2005	
Senior Class Gift	Page 38
The Marts Society	Page 39
Endowed Named Scholarships	Page 40-41
John Wilkes Society	Page 42-44

REPORT OF GIFTS KEY

The John Wilkes Society	\$500,000 or more
PLATINUM ASSOCIATES	\$250,000 - \$499,999
DIAMOND ASSOCIATES	\$100,000 - \$249,999
HONORARY ASSOCIATES	\$10,000 - \$99,999
TRUSTEE ASSOCIATES	\$5,000 - \$9,999
FOUNDER'S CIRCLE	\$2,500 - \$4,999
PRESIDENT'S CIRCLE	\$1,000 - \$2,499
JOHN WILKES ASSOCIATES	
The Eugene Farley Club	\$500 - \$999
GOLD CIRCLE	\$250 - \$499
BLUE CIRCLE	\$100 - \$249
FARLEY ASSOCIATES	
CONTRIBUTORS	Up to \$99

STATEMENT OF ACTIVITIES FROM OPERATIONS TOTAL

Revenues and other Support	
Tuition and Fees	\$ 61,135,166
Less: Student Aid	\$ (19,887,587)
Net Tuition and Fees	\$ 41,247,579
Government Grants and Contracts	\$ 3,808,805
Private Gifts, Grants and Contracts	\$ 2,722,734
Sales and Services of Auxiliary Enterprises	\$ 8,723,587
Income from Interest and Dividends	\$ 888,722
Other Additions	\$ 1,288,310
Endowment Income Designated for Current Operations	\$ 1,115,000
Net Assets Released from Restrictions	\$ —
Total Revenues and other Support	\$ 59,794,737
Expenses	
Instruction	\$ 25,950,440
Research	\$ 484,440
Public Service	\$ 1,194,903
Academic Support	\$ 5,297,111
Student Services	\$ 8,173,208
Institutional Support	\$ 12,632,835
Auxiliary Enterprises	\$ 5,573,612
Total Expenses	\$ 59,306,549
Increase in Net Assets from Operating Activities	\$ 488,188

BOARD OF TRUSTEES

Richard L. Bunn '55
 John M. Cefaly, Jr. '70
 Denise S. Cesare '77
 Charles F. Cohen
 Lawrence E. Cohen '57
 Esther B. Davidowitz
 Linda A. Fisher
 Shelley Freeman '82
 Colleen Gries Gallagher '81
 Joseph E. (Tim) Gilmour
 Michael I. Gottkdenker
 Jason D. Griggs '90
 Alan E. Guskin
 Milan S. Kirby
 Daniel Klem, Jr. '68
 Dan F. Kopen '70
 Melanie Maslow Lumia
 Michael J. Mahoney
 Marjorie H. Marquart
 George J. Matz '71
 Clifford K. Melberger
 John R. Miller '68
 William R. Miller '81
 Gerald A. Moffatt '63
 Robert A. Mugford '58
 Mary Bein Rhodes M77
 Ronald A. Rittenmeyer '72
 Eugene Roth '57
 James J. Sandman
 Marino J. Santarelli '73
 Susan Weiss Shoval
 Jay S. Sidhu M73
 Elizabeth A. Slaughter '68
 Ronald D. Tremayne '58

TRUSTEE EMERITI

Pattie S. Davies
 Robert A. Fortinsky
 Jerome R. Goldstein
 Frank M. Henry
 Beverly Blakeslee Hiscox '58
 Allan P. Kirby, Jr.
 Richard L. Pearsall
 William A. Perlmuth '51
 Arnold S. Rifkin
 Max Rosenn*
 Richard M. Ross, Jr.
 Joseph J. Savitz '48
 Stephen Sordani
 Constance McCole Umphred
 William J. Umphred, Sr. '52
 Norman E. Weiss

*Deceased

ALUMNI ASSOCIATION BOARD OF DIRECTORS

Vijay Arora, Faculty Rep.
 Laura Barbera Cardinale '72
 David Carey '83
 Terrence Casey '82,
 2nd VP
 Denise S. Cesare '77,
 BOT Rep.
 Kay Coskey '86
 Beth Danner '02, Secretary
 Fred R. Demech, Jr. '61
 Glen Flack '73
 Colleen Gries Gallagher '81,
 President
 Bridget Giunna '05
 Charlie Jackson '51,
 Ancestral Rep.
 G. Garfield Jones '72
 Clayton Karambelas '49
 Arthur Kibbe, Faculty Rep.
 Daniel Klem, Jr. '68,
 BOT Rep.
 Rosemary LaFratte '93
 William Layo '01
 Ashley McBreary '06,
 SAA President
 William Miller '81,
 BOT Rep.
 Ron Miller '93
 George Pawlush '69, 1st VP
 John F. Pullo '82, Historian
 Ali E. Qureshi '96
 Steven Roth '84
 John J. Serafin '90
 Matthew Sowcik '00
 Lou Steck '55
 Andrew Steinberg '06,
 SG President
 Bill Tarbart '70,
 Past President
 Margery Ulberg '69
 Stephanie Victor '06,
 Class Rep.
 Jodi Visconti '05

GIVING BY Constituency

TRUSTEES & TRUSTEES EMERITI

The John Wilkes Society
PLATINUM ASSOCIATES
\$50,000 or more
Jay S. Silbu '73

HONORARY ASSOCIATES
\$10,000 - \$24,999
John R. Miller '68

TRUSTEE ASSOCIATES
\$5,000 - \$9,999
John Michael Cefaly, Jr. '70
Denise Schaal Cosare '77
Jeanne R. Goldstein
Frank W. Henry
Alan P. Kirby, Jr.
Milan S. Kirby
Michael J. Mahoney
Clifford K. Melberger
William A. Perlmuth '51
Eugene Roth '57
James J. Sandman
Susan Weiss Showal
Constance McCole Umphred
William J. Umphred, Sr. '52

FOUNDER'S CIRCLE
\$5,000 - \$9,999
Richard L. Ben '59
Joseph E. (Tim) Gilmour
Michael I. Gordenker
Beverly Bakeslee Hiscan '58
Marjorie H. Manquart
Melanie Maslow Lumia
William R. Miller '81
Robert A. Mugford '58
Richard L. Peartall
Mary Belin Rhodes M77
Marino J. Santarelli '73
William H. Tremayne '57

PRESIDENT'S CIRCLE
\$2,500 - \$4,999

Ramona S. Davies
Robert A. Fortinsky
Arnold S. Rifkin
Ronald D. Tremayne '58

JOHN WILKES ASSOCIATES
\$1,000 - \$2,499
Lawrence E. Cohen '57
Escher Davidowitz
Jason D. Griggs '90
Richard M. Ross, Jr.
Joseph J. Savitz '48
Norman E. Weiss

The Eugene Farley Club
GOLD CIRCLE
\$500 - \$999
Daniel Klein, Jr. '68

BLUE CIRCLE
\$250 - \$499
George L. Fenner, Jr.*
Colleen Gries Gallagher '81

FARLEY ASSOCIATES
\$100 - \$249
Chuck Cohen
Elizabeth A. Slaughter '68

CONTRIBUTORS
Up to \$99
The Honorable Max Rosenn*

UNIVERSITY FAMILY
Faculty, Staff &
Emeriti

The John Wilkes Society
TRUSTEE ASSOCIATES
\$10,000 - \$99,999
Stanley B. Kay

FOUNDER'S CIRCLE
\$5,000 - \$9,999

Joseph E. (Tim) Gilmour
Bernard W. Graham

PRESIDENT'S CIRCLE
\$2,500 - \$4,999
Andrea E. Frantz
Michael J. Frantz
J. Michael Lennon

JOHN WILKES ASSOCIATES
\$1,000 - \$2,499
Jean Reiter Adams '78
Paul S. Adams '77
Jeffrey R. Alves
Anne Heineman Batory '68
Scott A. Byers
Sandra S. Carroll
Bonnie C. Culver
Jane M. Eimes-Crahall
Wilbur F. Hayes
Michael J. Hirthler
James L. Merryman
John G. Reese
James J. Sandman
Susan Weiss Showal
Constance McCole Umphred
William J. Umphred, Sr. '52

The Eugene Farley Club
GOLD CIRCLE
\$500 - \$999
Elizabeth A. Slaughter '68
Christopher J. Bailey
Louise M. Berard
Darin E. Fields
Edward F. Foote
Sandra A. Fumanti
Patricia Boyle Heaman '61
Robert J. Hecaman
Barbara Samuel Loftus
Michael F. Malkemes
Susan J. Malkemes '95
Melanie O'Donnell
Mickelson '93

Edward M. Moyer '73
Anne Straub Pclak M'98
John L. Pesta P'06
Bruce E. Phair '73
Anna Rusnak Noon

BLUE CIRCLE
\$250 - \$499
Joel A. Berlatsky
Thomas A. Bigler
Robert S. Capin '50
James F. Ferris '56
Joan Zaleski Ford '75
J. Bartholomay Grier '02
Kenneth L. Hanadel
Susan Matley Hritzak '81
Paul J. Kaspriskie, Jr.
Blake L. Mackesy
Joseph W. Mangan
Kenneth A. Pidcock
Helenmary M. Selecky
Sharon G. Telban '69
William B. Terzaghi
Thomas J. Thomas, Jr. '86
Philip R. Tuhy
Diane E. Wenger
Philip L. Wingert
Michele T. Zabriski

FARLEY ASSOCIATES
\$100 - \$249
Hisham A. Abu-Nabaa '96
Thomas J. Baldino
Rita A. Balestrini
Barbara N. Bellucci '69
Joseph T. Bellucci
Amal D. Biggers
William J. Biggers
Jenny Blanchard
Carol A. Bosack '80
Paul C. Browne
Janice Broyan
Mark A. Carpentier M'06
Joyce Victor Chmil '87
Carol P. Dippre
Michael W. Fasulka

Ellen R. Flint
Cheryl Lynn Petyak Gibson '71
Victoria M. Glod '91
Stanley J. Hanczye
Frank R. Hughes '84
Ruth C. Hughes
Harvey A. Jacobs '72
Keith Klahold
Anthony L. Liuzzo
Adelene C. Malatesta
William M. Martin
Matthew McCaffrey '94
Donald E. Mencer
Mary E. Miller
Barbara Rosick Moran '84
Mary Beth Mullen
Lisa A. Mulvey
Prahlad N. Murthy
Barbara L. Nansitil '70
Elena Niculescu-Mihai '95
Michaelene S. Ostruin
Jerry J. Palmaioli
Josephine M. Pangamban
David L. Pickett
Kristine Erhard Pruett '99
Richard G. Raspen '67
Gerald C. Rebo
Brian Redmond '97
Philip Rizzo
Marie Roke-Thomas '83
Francis J. Salley
Patricia L. Searfoss
Christine Tondrick
Seitzinger '98
John W. Seitzinger
Herbert B. Simon
Matthew J. Sowick '00
Michael Speziale
Frederick J. Sullivan
John T. Sumoski
Wagitha A. Taylor
Judith Tobin Telechowski '98
Deborah R. Tindell
Dominick P. Trombetta
Edward J. Ungureit
Mark A. Wanat

Jimmy E. Weaver
Alan E. Zellner '72
Margaret A. Zellner '74
Matthew J. Zukoski '86

CONTRIBUTORS

Up to \$99
Debra A. Archavage
Matthew C. Batronecy
Ronald R. Bernier
Karen Beth H. Bohan
Robert W. Bohlender
Sharon M. Bowar
Barbara A. Bracken
Gene A. Camoni '74
Agnis Swantek Cardoni '75
David R. Carey '83
Marie J. Carver
James M. Case
Samira T. Chamoun
Debra Prater Chapman '81
Cynthia Littzi Chisarick
Theresa Cochran
James M. Culhane
Nicole Sparano Culhane
Diane H. Demchak
Susan L. DiBonifazio
Michelle Diskin '95
Diane Duda
Deborah L. Dunn
Thomas Dunsuir
Joanne M. Fasciana
Susan M. Frank
Holly Piteavage Frederick '93
Richard A. Fuller
Mary L. Gillespie
John B. Gilmer
Barbara D. Gimble
Denise M. Granoski '05
Thomas A. Hamill
Michael P. Hardik
Robert N. Harris
Leona J. Hartland
Michelle R. Holt-Macey
Scott Howell
Mary Jo Frail Hromchak '80
Ben-David Kaminski
Ron M. Karaffa
Camille O. Kaschak
Mr. Edward R. Keefe
Kimberly Escarge Keller '95
Barbara E. King '81
Tammy M. Klucitas
Renee A. Kotz '05
Brittany N. Kramer '05
Justin Kraynack

Judith L. Kristeller
Diane M. Krokos
Jerry Kucirka '67
Jonathan G. Laudenslager '99
Christopher T. Leicht
Catherine Link '75
Glenn J. Lupole
Patricia A. Mangold
Philip A. Marino '80
Gale P. Martino
Frank J. Matthews
Michael C. McCree '99
Mary Ann T. Merrigan
Diane R. Milano
Lyndi L. Moran
Fred Nichols
Jeffrey S. Nietz '01
John L. Orchotsky
Gary L. Otto
Samira T. Chamoun
Andita Parker-Lloyd '96
Gayle M. Patterson
Michelle Umhira Pearce '91
Michael J. Pitoniak
Regina A. Plesko
Harvey Pollock
Tracy M. Polumbo
Kathleen S. Poplaski
Ronald L. Pryor '71
Jocelyn Kuhl Reese '84
Marianne Scicchiano Rexer '85
Joy B. Rinehimer
Anita V. Ruskey '03
Tricia M. Russell
Philip J. Ruthkoski
Debbie J. Rutkoski
Michele M. Sabol-Jones
Brian R. Sacolic
Mary Ann Savage
Roland C. Schmidt
Eileen N. Sharp
Nicholas Sharpe
Philip G. Simon
Genevieve M. Singer
Elaine A. Slabinski '71
Maryellen Sloat
Todd M. Sloat
Andrew B. Snyder '00
Karen A. Space
Michael F. Stolarick
Jonathan P. Strucke
Robert S. Swets
Romaine Szafran
Rhoda B. Tillman
Stephen J. Tillman
Evelyne Topfer

Marleen Troy
Mildred Urban
Rebecca H. Van Jura
Megan L. Wade
Mary L. Watkins
Eric A. Wright
Matthew J. J. Yencha
Cheryl M. Yustat

COMMUNITY
BUSINESSES &
FOUNDATIONS

The John Wilkes Society
TRUSTEE ASSOCIATES
\$10,000 - \$99,999
Aeroflex Foundation
Blue Cross of Northeastern PA
Citizens Charitable
Foundation
Commonwealth Telephone
Enterprises, Inc.
Diversified Information Tech.
Downtown Wilkes-Barre
Touchdown Club
Follett College Stores
The Goldstein Family
Foundation
Guard Foundation
Harkness Foundation
for Dance
Clayton & Theresa
Karambelas Fund
A.P. Kirby, Jr. Foundation, Inc.
The Luzerne Foundation
Mark IV Industries
Foundation, Inc.
McCole Foundation, Inc.
Sordoni Foundation, Inc.
The Wachovia Foundation
The Weininger
Foundation, Inc.
William G. McGowan
Charitable Fund, Inc.
The Wilary Foundation Board

Lockheed Martin
Luzerne County Convention
& Visitors Bureau
PP & L
PA Economy League, Inc.
Roseann, Jenkins &
Greenwald, LLP
The Overlook Estate
Foundation

PRESIDENT'S CIRCLE
\$2,500 - \$4,999
Acorn Foundation, Inc.
Association of Independent
Colleges & Universities
Bergman Foundation
Bohlin, Cywinski, Jackson
Gould Evans Affiliates
Green Valley Landscaping, Inc.
Guard Insurance Group
Intermetro Industries Corp.
Jack Follweiler's Garage
Lewitt & Freeman Real Estate
M & T Bank
M & T Charitable Foundation
NEPA Society of American
Highway Engineers
Sandy & Arnold Rifkin
Charitable Foundation
SunGard Collegis, Inc.
Walgreens Co.
Penn State University
Wilkes-Barre Campus
Wilkes-Barre Rotary Club

JOHN WILKES ASSOCIATES
\$1,000 - \$2,499
Alexander W. Dick
Foundation
Amitre Corporation
Ballard Spahr Andrews
& Ingersoll, LLP
Benco Dental Company
Bloomberg Metal Company
Brdaric Excavating, Inc.
Brennan Electric, Inc.
Chamberlain
Manufacturing Corp.
Changeable Sky's, LLC.
Cleveland Bros.
Equipment Corp.
Coca-Cola Bottling Co.
The Coutu Foundation
Creative Business Interiors
Fortune Fabrics, Inc.
Geisinger Wyoming
Valley Medical Staff

George Marquis
MacDonald Foundation
Golden Business
Machines, Inc.
Kronick Kalada Berdy
& Co., PC
The Lion Brewery, Inc.
The Lubrizol Foundation
Luzerne National Bank
Mericle Commercial
Real Estate
N.R.G. Controls North, Inc.
NACDS - National
Association of Chain
Drug Stores
NE PA Paint &
Decorating Contractors
New Era Technologies, Inc.
PA Society of Public
Accountants, NE
Chapter (PSPA)
Pharmacists Mutual
Insurance Company
Plains Rotary Club
Polish Room Committee
PriceWaterhouseCoopers
Joseph J. & Janice W.
Savitz Fund
Schwab Fund for
Charitable Giving
Sodexho, Inc.
Wyoming Valley Health
Care Systems, Inc.

The Eugene Farley Club
GOLD CIRCLE
\$500 - \$999
ALLTEL Information
Services, Inc.
Building Industry
Association of NE PA
First Liberty Bank & Trust
First National Bank
of Berwick
First National
Community Bank
Gertrude Hawks
Candies, Inc.
Michael & Kathleen
Hirthler Fund
Jack Williams Tire Co.
McCarthy Tire Service Co. Inc.
Montage Agency, Inc.
Professional Accountant
Association
Roof Pro, Inc.

REPORT OF Gifts
Giving By Constituency

REPORT OF Gifts
Giving By Constituency

UGI Penn Natural Gas
UGI Utilities, Inc.
Wachovia Foundation

BLUE CIRCLE

\$250 - \$499

Best Western East
Mountain Inn
Brucelli Advertising
Co., Inc.
Carpenters Local Union #645
Citizens Bank
Follett Store
Frank Martz Coach Co.
Herron Electric, Inc.
Holiday Inn
Kappa Psi Pharmaceutical
Fraternity, Inc.
Kern Brothers, Inc.
Max L. Fainberg & Son
May Brothers Co.
McCarthy Flower Shops
Mesko Glass & Mirror Co., Inc.
Montage Realty Co.
National Philanthropic
Trust DAF
Omega Bank
PA Society of Health-System
Pharmacists
Power Engineering
Corporation
Quaker Oats Company
The RBA Group, Inc.
Service Electric Cable TV
Sharper Embroidery, Inc.
Shawnee Inn & Golf Resort
T.J. Cannon, Inc.
Tony Drust Painting &
Wallcovering
Twin City Builders, Inc.
Wilkes-Barre Window
Clean, Inc.
Wyoming Valley Country Club

FARLEY ASSOCIATES

\$100 - \$249

21st Century Insurance Group
A. Dancheck, Inc.
Bayhealth Medical Center
Berks County Pharmacists
Bertels Can Company, Inc.
Bieracki Eye Associates
Bonner Chevrolet
Ceco Associates, Inc.
Central Clay Products, Inc.
Colours, Inc.
DPL Mail Processing
Center, Inc.

Delta Electrical Systems, Inc.
Diagnostics Lab
Earth Conservancy
Eastern Penn Supply Co.
Flack Family Fund of the
Luzerne Foundation
Futuristic Innovative
Graphics
Geisinger Health System
Hillman Security & Time
Joan Evans Real Estate
JustGive, Inc.
KMK Associates
Kleen Air Systems, Inc.
Knapich Optical
Lehman Power Equipment
Marquis Art and Frame
Odak Corporation
Osterhout Free Library
Phils Sunoco Service Station
Ralmark Company
Re-marketing Services, Inc.
Ruckno Associates, Inc.
United Way of
Wyoming Valley
Valentine's Jewelry
Votiek TV & Appliance, Inc.
WVIA
Waterfall Pottery
World Reach, Inc.

CONTRIBUTORS

Up to \$99

Adelphia Cable
Communication
Apple Tree Nursery &
Primary School
Astro Car Wash
Back Mountain Tobacco
Bakker & Lewis Architects
Best Western Genetti Hotel
Black Duck Grille
Bresset & Santora, LLC
ChemSearch
East Mountain Inn
First Liberty Bank & Trust
Innovation Mist-On Tan
Lookout House Restaurant
M&T Investment Group
Main Hardware Store
McDonald's of Mountain Top
Mountain Top Video
National Starch &
Chemical Foundation
Ochman's Coins & Jewelry
PNC Bank

Parsons Sales Company, Inc.
Peking Chef
Reeves Rent-A-John, Inc.
Rowe Door Sales
Shades Unlimited
Somerville Construction
Services, Inc.
Weis Markets, Inc.
Wilkes-Barre City
Firefighters
Wittman Construction, LLC
Young Lawyers Div.,
Lackawanna Bar Assoc.

**FRIENDS, PARENTS
& GRANDPARENTS**

The John Wilkes Society

DIAMOND ASSOCIATES

\$250,000 - \$499,999

Mr. & Mrs. William H. Young*

HONORARY ASSOCIATES

\$100,000 - \$249,999

Mrs. Ellen E. Ayre*

TRUSTEE ASSOCIATES

\$10,000 - \$99,999

Mr. & Mrs. Albert Boscov
Attorney Richard Gelfond
Mrs. Dorothea W. Henry
Mr. & Mrs. Terrence P.
Horrigan
Mr. & Mrs. John P. Kearney
Dr. Charles F. Laycock
Mr. Richard P. Schifter
Mr. & Mrs. William B. Sordoni

FOUNDER'S CIRCLE

\$5,000 - \$9,999

Mrs. Patty Gilmour
Mr. F. Paul Lumia
Mr. & Mrs. Robert T. Martin
Attorney Michael Schler
Mr. & Mrs. Kenneth H.
Taylor, Jr.

PRESIDENT'S CIRCLE

\$2,500 - \$4,999

Mr. Donald E. Cherry
Mr. & Mrs. Steven N. Cohen
Mrs. Grace J. Kirby Culbertson
Mr. & Mrs. Stanley S. Davies
Attorney Diana Donaldson
& Stuart Donaldson
Mr. & Mrs. Sheldon Goidell

Mr. Vladimir Hadsky
Mr. Fordham E. Huffman
Mrs. Donna P. Lennon
Ms. K. Heather McRay
Attorney Arthur Piccone
Mr. Michael D. Rosenthal
Mrs. Joyce Tremayne
Mr. Richard S. Zarin

JOHN WILKES ASSOCIATES

\$1,000 - \$2,499

Mr. & Mrs. John Agren
Mr. & Mrs. Albert G. Albert
Mr. William E. Althaus
Mr. & Mrs. William F. Behm
Mrs. Sandra Bernhard
Mrs. Therese Brennan*
Mrs. Ann M. Coughlin
Dr. Harold E. Cox
Mr. & Mrs. William Davidowitz
Mr. Thomas J. Deitz
Mr. Welton G. Farrar
Mr. & Mrs. Sidney Friedman
Mr. & Mrs. Thomas M.
Gehret P07
Ms. Susan B. Gellman
Attorney & Mrs. Alan Gold
Mr. & Mrs. Edward A.
Groscek, Sr.
Mr. & Mrs. Frank H.
Hughes, Jr.
Ms. Diane F. Klotnia
Mr. & Mrs. Harold
Kwalwasser
Ms. Jane K. Lampe-Groh
Mr. & Mrs. Thomas J. Mack, Jr.
Mr. & Mrs. Robert Mericle
Mrs. Mollie Moffatt
Attorney Norman Monhait
Dr. & Mrs. Cummings A. Piatt
Dr. George F. Ralston
Mr. Ronald Lee Sargent
Mr. Brian Scandle
Mr. & Mrs. Leonard
Silberman
Mr. & Dr. Andrew J.
Sordoni III
Ms. Ann Brennan Wagner*
Mr. Thomas A. Weeks
Dr. David J. Wells
Mr. David S. Wolf

BLUE CIRCLE

\$250 - \$499

Mrs. Barbara Allan
Mr. & Mrs. Herman Baumann
Mrs. Joan A. Evans
Mr. Bernard J. Ford III
Mr. & Mrs. William Garro, Jr.
Mr. & Mrs. Ignatius Grande
Mrs. Lisa Hanadel
Mr. James E. Harrington, Jr.
Mr. William Hritzak
Mrs. Susan Dantona Jolley
Attorney Clarence Kegel
Mr. & Mrs. Christian S.
Mackesy
Mr. & Mrs. Richard Maslow
Mr. & Mrs. Richard S.
Orlowski
Mrs. Darlene F. Payne
Mr. & Mrs. Bruce Rosenthal
Attorney & Mrs. David B.
Savitz
Mr. Joseph Seruda
Mr. & Mrs. James Shoemaker
Mr. Y. Judd Shoval
Mr. & Mrs. William Skumamich
Mr. Rick Berry

The Eugene Farley Club

GOLD CIRCLE

\$500 - \$999

Mr. Stephen M. Albrecht

Mr. Rick Berry

Dr. & Mrs. Christopher N.
Breiseth
Mr. John F. Burke
Mr. & Mrs. Henry Canoy
Attorney & Mrs. Jerry
Chariton
Mr. Harrison J. Cohen
Mrs. Karen Dougherty
Dr. Sylvia Dworski
Dr. & Mrs. Richard A. Hiscox
Ms. Michele Kenney
Dr. David W. Kistler
Senator & Mrs. Charles D.
Lemmond, Jr.
Mr. James J. Lennox
Attorney Paul William
MacGregor
Mr. & Mrs. Daniel Marsh
Mrs. Alexandra C. Moravec
Mr. Andrew J. Morris
Mrs. Barbara Davenport
Neville
Ms. Anjali D. Patel
Mr. & Mrs. John L. Pesta P06
Mrs. Leona F. Powell
Mr. Lawrence Reich &
Ashley Wilkerson
Mr. Gaurav I. Shah
Mrs. Lori Singer
Mr. Brian Wildstein

FARLEY ASSOCIATES

\$100 - \$249

Dr. & Mrs. F. Jorge Abrantes
Mrs. Barbara Albert
Mr. & Mrs. Theodore J. Anderer
Dr. Wolfgang Hans Baerwald
Mrs. Janet Bird
Mr. & Mrs. James Paul
Bochicchio P07
Mr. Robert Bugdal
Mr. & Mrs. Richard Burke P07
Mr. & Mrs. Zohrab Kirkorian
The Honorable & Mrs. A.
Richard Caputo
Ms. Donna Marie Chajko
Mr. & Mrs. John D. Chakan
Mrs. Mary Blair V. Chapisat
Ms. Jane Cokely
The Honorable & Mrs.
Richard P. Conaboy
Mr. & Mrs. Richard E.
Dahlberg
Ms. Nina S. Davidowitz
Mr. & Mrs. David C.
Denicola
Ms. Phyllis Eckman
Mr. Paul L. Edenfield
Mrs. Joan Evans
Mr. Thomas Eysmans
Dr. Linda F. Farley
Mr. & Mrs. Kenneth T. Gareau
Mr. & Mrs. Henry L.
Graham, Jr.
Mrs. Cecilia Hansen
Ms. Maureen Harkins
Mrs. Catherine Hess
Mr. & Mrs. Michael P. Hinchey
Mr. John A. Horner
Mr. & Mrs. David P. Hourigan
Mrs. Nancy A. Huff
Attorney Richard Hughes III
Attorney & Mrs. Keith A.
Hunter
Mr. & Mrs. James Jeffery P06
Ms. Maribeth Jones
Mr. & Mrs. Colin Keefer
Attorney Jerome Kolenda

BLUE CIRCLE

\$250 - \$499

Mrs. Barbara Allan
Mr. & Mrs. Herman Baumann
Mrs. Joan A. Evans
Mr. Bernard J. Ford III
Mr. & Mrs. William Garro, Jr.
Mr. & Mrs. Ignatius Grande
Mrs. Lisa Hanadel
Mr. James E. Harrington, Jr.
Mr. William Hritzak
Mrs. Susan Dantona Jolley
Attorney Clarence Kegel
Mr. & Mrs. Christian S.
Mackesy
Mr. & Mrs. Richard Maslow
Mr. & Mrs. Richard S.
Orlowski
Mrs. Darlene F. Payne
Mr. & Mrs. Bruce Rosenthal
Attorney & Mrs. David B.
Savitz
Mr. Joseph Seruda
Mr. & Mrs. James Shoemaker
Mr. Y. Judd Shoval
Mr. & Mrs. William Skumamich
Mr. Rick Berry

Ms. Tracy M. Smith
Attorney George A. Spohrer
Mr. Avi Szenberg
Mr. & Mrs. John Tarone
Ms. Vivien G. Terzaghi
Attorney David L. Thomas
Mr. Todd Vonderheid
Mrs. Edward Welles

FARLEY ASSOCIATES

\$100 - \$249

Dr. & Mrs. F. Jorge Abrantes
Mrs. Barbara Albert
Mr. & Mrs. Theodore J. Anderer
Dr. Wolfgang Hans Baerwald
Mrs. Janet Bird
Mr. & Mrs. James Paul
Bochicchio P07
Mr. Robert Bugdal
Mr. & Mrs. Richard Burke P07
Mr. & Mrs. Zohrab Kirkorian
The Honorable & Mrs. A.
Richard Caputo
Ms. Donna Marie Chajko
Mr. & Mrs. John D. Chakan
Mrs. Mary Blair V. Chapisat
Ms. Jane Cokely
The Honorable & Mrs.
Richard P. Conaboy
Mr. & Mrs. Richard E.
Dahlberg
Ms. Nina S. Davidowitz
Mr. & Mrs. David C.
Denicola
Ms. Phyllis Eckman
Mr. Paul L. Edenfield
Mrs. Joan Evans
Mr. Thomas Eysmans
Dr. Linda F. Farley
Mr. & Mrs. Kenneth T. Gareau
Mr. & Mrs. Henry L.
Graham, Jr.
Mrs. Cecilia Hansen
Ms. Maureen Harkins
Mrs. Catherine Hess
Mr. & Mrs. Michael P. Hinchey
Mr. John A. Horner
Mr. & Mrs. David P. Hourigan
Mrs. Nancy A. Huff
Attorney Richard Hughes III
Attorney & Mrs. Keith A.
Hunter
Mr. & Mrs. James Jeffery P06
Ms. Maribeth Jones
Mr. & Mrs. Colin Keefer
Attorney Jerome Kolenda

Mr. Horace E. Kramer
Ms. Ronnie Kurlanchek
Ms. Robin Sue Landsburg
The Honorable Donald P. Lay
Mr. Michael E. Lindgren
Mr. & Mrs. F. Andrew Logue
Ms. Linda L. Lynett
Dr. & Mrs. Edwin L. Lyons
Dr. & Mrs. Michael MacDowell
Mr. Ken Marquis
Ms. Mary Jule McCarthy
Mr. & Mrs. Leo Moskovitz
Dr. & Mrs. Muhammad Munir
Mr. & Mrs. Joseph R.
Nardone, Sr.
Mr. Frank R. Nissel
Dr. & Mrs. George J. O'Donnell
Mr. & Mrs. Paul A. O'Hop
Mrs. Jean P. Pall
Mr. & Mrs. Shepherd Pawling
Dr. & Mrs. Harry Papagopol
Penugonda
Mr. Joseph Pisano
Mrs. Bernardine Polak
Mr. & Mrs. Jerry Postupack
Mr. & Mrs. Elden Queen
Mr. & Mrs. James Quinn P05
Mr. & Mrs. Kenneth G.
Reinheimer
Mr. & Mrs. William E. Roman
Mr. & Mrs. Richard A. Rose, Jr.
Attorney & Mrs. Harold Rosenn
Mr. & Mrs. Fouad Samaha
Dr. & Mrs. Abdol H. Samii
Mr. Marvin Schub
Attorney Michael Selter
Attorney & Mrs. Charles A.
Shaffer
Ms. Rosalie A. Shambe
Dr. Donald Shandler
Ms. Carmen J. Shellhammer
Ms. Ruth K. Smith
Mr. & Mrs. Lon F. Snook
Mrs. Andrea G. Sordoni
The Honorable & Mrs.
Walter K. Stapleton
Dr. Sanford B. Sternlieb
Mrs. Margaret R. Sullivan
Mr. & Mrs. Frederick J. Szoke
Ms. Marjorie Trethaway
Mrs. Mahsa Vahidi & Mr.
Arman Paymai
Mr. & Mrs. Melvin Warshal
Mr. & Mrs. William C.
Wassel
Mr. Michael H. Witcoskie

FARLEY ASSOCIATES

\$100 - \$249

Dr. & Mrs. F. Jorge Abrantes
Mrs. Barbara Albert
Mr. & Mrs. Theodore J. Anderer
Dr. Wolfgang Hans Baerwald
Mrs. Janet Bird
Mr. & Mrs. James Paul
Bochicchio P07
Mr. Robert Bugdal
Mr. & Mrs. Richard Burke P07
Mr. & Mrs. Zohrab Kirkorian
The Honorable & Mrs. A.
Richard Caputo
Ms. Donna Marie Chajko
Mr. & Mrs. John D. Chakan
Mrs. Mary Blair V. Chapisat
Ms. Jane Cokely
The Honorable & Mrs.
Richard P. Conaboy
Mr. & Mrs. Richard E.
Dahlberg
Ms. Nina S. Davidowitz
Mr. & Mrs. David C.
Denicola
Ms. Phyllis Eckman
Mr. Paul L. Edenfield
Mrs. Joan Evans
Mr. Thomas Eysmans
Dr. Linda F. Farley
Mr. & Mrs. Kenneth T. Gareau
Mr. & Mrs. Henry L.
Graham, Jr.
Mrs. Cecilia Hansen
Ms. Maureen Harkins
Mrs. Catherine Hess
Mr. & Mrs. Michael P. Hinchey
Mr. John A. Horner
Mr. & Mrs. David P. Hourigan
Mrs. Nancy A. Huff
Attorney Richard Hughes III
Attorney & Mrs. Keith A.
Hunter
Mr. & Mrs. James Jeffery P06
Ms. Maribeth Jones
Mr. & Mrs. Colin Keefer
Attorney Jerome Kolenda

Mr. Charles T. Young
Mr. Joel Zitofsky
Mr. & Mrs. Thomas H.
van Arsdale

CONTRIBUTORS

Up to \$99

Mr. Richard P. Adams
Ms. Donna L. Allan
Mr. Frederick Andrews*
Ms. Lillian Answini
Mr. & Mrs. Robert J.
Archavage P06
Ms. Joanne M. Avery P07
Mrs. Marion E. Barlow
Mr. John Beck
Mr. John K. Beil
Mr. Fred Bernard
Mr. & Mrs. Robert L. Bird
Mr. & Mrs. Clarke Bittner
Dr. & Mrs. J. Scott Blase
Mr. & Mrs. Richard M. Bordau
Mr. & Mrs. Ronald J. Botch
Mr. & Mrs. Martin Butkovsky
Mr. & Mrs. Mike Butts
Dr. Antoinette B. Calderone
The Honorable William W.
Caldwell
Mr. & Mrs. Gary Cardamone
Mr. & Mrs. William Carl, Jr.
Mr. & Mrs. Bruce R. Chapper
Mr. & Mrs. Keith Check
Mr. & Mrs. James Chiucchi
Ms. Harriet Dawn Christmas
Mr. & Mrs. Lawrence
Churnetski
Mr. & Mrs. Kenneth S.
Colbert
Mrs. Aleta Claire Connell
Ms. Sally Connor
Mr. & Mrs. Frank P.
Conyngham
Ms. Margaret S. Corbett
Ms. Debbie Coyle
Ms. Doris Crowe
Mr. & Mrs. Gottfried P. Csala
Mr. H. Bogue Cummings
Mr. William G. Dalton III
Mr. David Danilack
Ms. Virginia C. Davis
Ms. Zaida DeLaCruz
Ms. Janet A. Delaney
Mr. & Mrs. John J. Della
Rosa, Jr.
Dr. & Mrs. Earl P. Detrick
Mr. & Mrs. Gerald O. Devlin
Mrs. Susan L. DiBonifazio

Mr. Thomas W. Dombroski
Mr. & Mrs. James P. Dunbar
Mr. Joseph Dzwilefsky
Mr. & Mrs. Joseph A. Eagen
Mr. & Mrs. John E. Edler III
Colonel & Mrs. Tracy L. Ellis
Mrs. Romaine Ercolani
Mr. & Mrs. Gary Fairweather
Mr. & Mrs. David H. Farrand
Mr. & Mrs. Howard B. Fedrick
Attorney Linda A. Fisher
Ms. Shirley E. Forney
Mr. & Mrs. Anthony C.
Fortunato
Dr. & Mrs. Louis J. Freedman
Mr. & Mrs. Robert M. Friedler
Dr. Leon Friedman
Ms. Alice Fumanti
Ms. Erika Funke
Mr. & Mrs. Steven Gale
Mr. & Mrs. Dwight L. Garrett
Dr. & Mrs. John C. Gaudio
Ms. Cynthia M. Gilmer
Mr. & Mrs. Peter J. Gogo
Dr. & Mrs. Warren E. Gogo
Attorney Richard M. Goldberg
Ms. Grace E. Grasso
Mr. & Mrs. William F. Grippo
Mrs. Janet C. Guariglia
Dr. Stanley S. Gutin
Mr. & Mrs. John E. Gyory
Mr. & Mrs. Barry S. Holland
Mr. & Mrs. Carson C.
Hoover, Sr.
Ms. Sylvia Hughes
Mrs. Sylvia Hurlbert
Mr. & Mrs. George L. Jackson
Mr. & Mrs. Philip R. Janke
Ms. Cathie Jesscavage
Ms. Florence P. Johnson
Attorney & Mrs. Ralph J.
Johnston, Jr.
Mr. Hubert J. Jones
Mrs. Nancy Judd
Ms. Cheryl J. Kanouse
Mr. & Mrs. Thomas Kaye
Mr. & Mrs. Paul M. Kazinetz
Mr. Brian S. Keeler
Ms. Emily D. Kessler
Ms. Faye E. Ketner
Ms. Virginia Kiernan-Clerkin
Mrs. Elizabeth H. Kiley
Ms. Sylvia Klein
Mr. & Mrs. Donald C.
Klinger, Jr.
Mr. & Mrs. Robert Kohilis
Mr. & Mrs. Richard E. Kocher

CONTRIBUTORS

Up to \$99

Mr. Richard P. Adams
Ms. Donna L. Allan
Mr. Frederick Andrews*
Ms. Lillian Answini
Mr. & Mrs. Robert J.
Archavage P06
Ms. Joanne M. Avery P07
Mrs. Marion E. Barlow
Mr. John Beck
Mr. John K. Beil
Mr. Fred Bernard
Mr. & Mrs. Robert L. Bird
Mr. & Mrs. Clarke Bittner
Dr. & Mrs. J. Scott Blase
Mr. & Mrs. Richard M. Bordau
Mr. & Mrs. Ronald J. Botch
Mr. & Mrs. Martin Butkovsky
Mr. & Mrs. Mike Butts
Dr. Antoinette B. Calderone
The Honorable William W.
Caldwell
Mr. & Mrs. Gary Cardamone
Mr. & Mrs. William Carl, Jr.
Mr. & Mrs. Bruce R. Chapper
Mr. & Mrs. Keith Check
Mr. & Mrs. James Chiucchi
Ms. Harriet Dawn Christmas
Mr. & Mrs. Lawrence
Churnetski
Mr. & Mrs. Kenneth S.
Colbert
Mrs. Aleta Claire Connell
Ms. Sally Connor
Mr. & Mrs. Frank P.
Conyngham
Ms. Margaret S. Corbett
Ms. Debbie Coyle
Ms. Doris Crowe
Mr. & Mrs. Gottfried P. Csala
Mr. H. Bogue Cummings
Mr. William G. Dalton III
Mr. David Danilack
Ms. Virginia C. Davis
Ms. Zaida DeLaCruz
Ms. Janet A. Delaney
Mr. & Mrs. John J. Della
Rosa, Jr.
Dr. & Mrs. Earl P. Detrick
Mr. & Mrs. Gerald O. Devlin
Mrs. Susan L. DiBonifazio

Mr. & Mrs. William C.
Kocher, Jr.
Mr. David E. Koff
Attorney Daniel L. Koffsky
Mrs. Joyce J. Kopack
Mr. David Krafchik
Ms. Joan Kripke
Mr. & Mrs. Roger A. Lacy
Mrs. Jane Landau
Ms. Sylvia Lane
Mrs. Mildred F. Lang
Mr. & Mrs. Paul Lantz
Mr. & Mrs. Frank Larobina
Ms. Katherine Larrabee
Mr. & Mrs. Eric Lee
Mrs. Barbara M. Lehr
Mr. & Mrs. Thomas A.
Lenio P09
Dr. Shana L. Lettieri
Mr. & Mrs. Arnold Libenson
Ms. Meral Libenson
Dr. & Mrs. John C. Gaudio
Mr. Frank J. Loch
Mr. & Mrs. Gary Lopresti
Dr. & Mrs. Edward Lotuck
Mrs. Ruth R. Lundberg
Mr. & Mrs. Frederick R. Lutz
Mr. & Mrs. Merle D. Mackin
Ms. Sandra Maffei
Dr. Stanley S. Gutin
Attorney & Mrs. Bernard
Marcus
Ms. Jill A. Martin
Mr. & Mrs. Ron Martino
Mr. & Mrs. David M. Matheson
Ms. Alida M. Matusek
Monsignor Donald McAndrews
Ms. Patricia D. McManus
Dr. & Mrs. David M. Meyer
Dr. Francis A. Michael
Dr. & Mrs. Richard D.
Michelstein
Mr. Todd H. Milano
Mr. & Mrs. Irving Miller
Dr. & Mrs. James E. Miller
Mr. & Mrs. John E. Miller
Mr. & Mrs. W. Curtis Montz
Mr. & Mrs. Guillermo Morales
Mr. & Mrs. Benjamin Moskow
Mr. Samuel Mould
The Honorable Malcolm Muir
Ms. Martha M. Murphy
Dr. & Mrs. Jay D. Myers
Dr. Gary Nataupsky
Mr. & Mrs. Daniel Nearhouse
Mr. & Mrs. Howard Newman
Mr. Fred J. Ney

GIVING BY Class

- CLASS OF 1935**

The Eugene Farley Club
GOLD CIRCLE
\$500 - \$999
Robert H. Melson
- CONTRIBUTORS**
Up to \$99
Luther D. Arnold
- CLASS OF 1937**

The Eugene Farley Club
GOLD CIRCLE
\$500 - \$999
Rose Gorgold Liebman*
- FARLEY ASSOCIATES**
\$100 - \$249
Marjone Honeywell Cummins
- CONTRIBUTORS**
Up to \$99
Harriet Thalenfeld Gray
Leon F. Rokosz
- CLASS OF 1938**

The Eugene Farley Club
CONTRIBUTORS
Up to \$99
Margaret Bendock Towers
Ernest Weisberger
Ilaria Sterniuk Zubritzky
- CLASS OF 1939**

The Eugene Farley Club
FARLEY ASSOCIATES
\$100 - \$249
Darina J. Tuhy
- CONTRIBUTORS**
Up to \$99
Julia Place Bertsch
Betty Davidson Braun
Dorothy Smalles Nutt
- CLASS OF 1940**

The John Wilkes Society
JOHN WILKES ASSOCIATES
\$1,000 - \$2,499
George W. Bierly*
- The Eugene Farley Club**
FARLEY ASSOCIATES
\$100 - \$249
Henry C. Johnson
- CONTRIBUTORS**
Up to \$99
James B. Aikman
John D. Batey
Leon F. Wazeter
- CLASS OF 1941**

The John Wilkes Society
JOHN WILKES ASSOCIATES
\$1,000 - \$2,499
Alfred Groh*
- The Eugene Farley Club**
FARLEY ASSOCIATES
\$100 - \$249
Thomas E. Brislin
Kenneth Kressler
Carolyn Jane Nagro Lowum
Irene Saucrunas Santarelli
- CLASS OF 1942**

The Eugene Farley Club
GOLD CIRCLE
\$500 - \$999
Stefana Hoyniak Shoemaker
- FARLEY ASSOCIATES**
\$100 - \$249
Joseph B. Farrell
Katherine P. Freund
Sallyanne Frank Rosem
Joseph G. Sweeney
- CONTRIBUTORS**
Up to \$99
Charlotte Reichlin Cutler
Rita Scitcheck Dicker
Milton Edelman
Joseph C. Kelly
Elizabeth Womelsdorf Mitchell
Jeannette Jones Phethean
- CLASS OF 1943**

The Eugene Farley Club
FARLEY ASSOCIATES
\$100 - \$249
Treveryan Williams Speicher
- CONTRIBUTORS**
Up to \$99
Betty Woolcock De Witt
Mary Hutcho Flanagan
Harry S. Katz
Pearl Kaufman
John C. Keeney
- CLASS OF 1944**

The John Wilkes Society
PRESIDENT'S CIRCLE
\$2,500 - \$4,999
Louise S. Hazeltine*
- The Eugene Farley Club**
FARLEY ASSOCIATES
\$100 - \$249
Ruth Punshon-Jones
George Papadopoulos*
- CONTRIBUTORS**
Up to \$99
Walter R. Coats*
Kathryn Hiscos Quinn*
Ruth Tischler Voelker
Arthur C. Williams
- CLASS OF 1945**

The Eugene Farley Club
BLUE CIRCLE
\$250 - \$499
Gifford S. Cappellini
- FARLEY ASSOCIATES**
\$100 - \$249
Jean Steele Iba*
Helen Stapleton Schmitt
- CONTRIBUTORS**
Up to \$99
Florence Jones Bower*
Louise Saba Carol
Evelyn Feinstein Eisenstadt
Harvey Trachtenberg*
- CLASS OF 1946**

The Eugene Farley Club
FARLEY ASSOCIATES
\$100 - \$249
Ralph G. Beane
- CONTRIBUTORS**
Up to \$99
Miriam Levinson Brand
Ruth Kluger Harris
Jean Lampert Lewis
- CLASS OF 1947**

The Eugene Farley Club
FARLEY ASSOCIATES
\$100 - \$249
Harris R. Boyce
George J. Kuzmak, Sr.
Walter E. Margie
Nathaniel W. Trembath
- CONTRIBUTORS**
Up to \$99
Margaret Holloway
Manchester
Joseph V. Pringle
George J. Trebilcock
- CLASS OF 1948**

The John Wilkes Society
JOHN WILKES ASSOCIATES
\$1,000 - \$2,499
Joseph J. Savitz
- The Eugene Farley Club**
BLUE CIRCLE
\$250 - \$499
Miriam Golightly Baumann
Arnold H. Nachlis
- FARLEY ASSOCIATES**
\$100 - \$249
Elmo M. Clemente
Albert J. Denny
John E. Gorski
Anna Cheponis Lewis
William H. Lewis
William Melnyk
Muriel Bransdorf Mintzer
Shirley Phillips Passeri
William H. Rice
Eugene L. Shaver
- CONTRIBUTORS**
Up to \$99
Frances Wilki Abriha*
Anthony J. Bartoletti
Claire Fischer Reissinger
Margaret Hughes Coats
Rhuca Williams Culp
Robert J. Dido
John J. Fetch
Clement L. Marjcher
- CLASS OF 1949**

The John Wilkes Club
TRUSTEE ASSOCIATES
\$10,000 - \$99,999
Clayton J. Karambelas*
- JOHN WILKES ASSOCIATES**
\$1,000 - \$2,499
Jean Renter Hughes
Edwin M. Kosik

*Deceased *Chair *Agent

MEMORIAL GIFTS TO THE
Max Rosenn Lecture Series in
Law and Humanities Endowment

Former law clerks of the late Max Rosenn and the law firm of Rosenn, Jennings and Greenwald recently announced their contribution of \$490,000 to Wilkes University to continue the annual Max Rosenn Lecture Series in Law and Humanities. These individuals were generously contributed.

- Mr. & Mrs. Stanley S. Davies
Diana & Stuart Donaldson
Barth Conservancy
Mr. Paul L. Edentfield
Attorney Linda Fisher
Dr. Leon Friedman
Mr. & Mrs. Susan Gale
Catonager Health System
Attorney Richard Colband
Mr. Susan E. Callinan
Dr. & Mrs. Joseph F. Callinan
Mr. & Mrs. Jerome R. Goldstein
Mr. & Mrs. Michael H. Goldenfest
Mr. & Mrs. Ignatius Grande
Greater Wilkes-Barre Chamber
of Business and Industry
Mr. & Mrs. Alfred Urish 41
Dr. Stanley S. Gutt
Mrs. Ruth Kluger Harris 40

- Mr. & Mrs. Frank M. Henry
Mr. Fordham E. Huffman
Attorney & Mrs. Richard
Hughes, III
Attorney Clarence Kegel
Ms. Michele Kenney
Ms. Emily D. Kessler
Mr. Allan P. Kirby, Jr.
Mr. & Mrs. Zohrab Kirkorian
Ms. Diane E. Klotnia
Mr. David E. Koff
Attorney Daniel L. Kolisky
Ms. Joan Kripke
Mr. & Mrs. Harold Kwalwasser
Ms. Robin Sue Landsburg
Ms. Sylvia Lane
Mr. & Mrs. Paul Lantz
The Honorable Donald P. Lay
Senator & Mrs. Charles D.
Lynnwood, Jr.
Mr. & Mrs. Arnold Libenson
Dr. & Mrs. Edwin L. Lyons
Met Investment Group
Dr. & Mrs. Michael MacNell
Attorney Paul William
MacGregor
Mr. & Mrs. Myrtle D. Alreckin
Attorney & Mrs. Bernard Marcus
Mr. & Mrs. Daniel Marsh
Mr. & Mrs. Richard Mashow

- Mr. Kelly J. Mather 56
McCarthy Tire Service Co. Inc.
Ms. Patricia D. McManus
Mrs. Elizabeth Grady
McNamara 74
Ms. K. Heather McKay
Dr. & Mrs. Richard D.
Michelstein
Attorney Norman Monhait
Mr. Andrew J. Morris
Mr. & Mrs. Leo Moskowitz
The Honorable Malcolm Muir
Mr. & Mrs. Paul A. O'Hop
Mr. Quentin A. Polfrey
Mr. & Mrs. Richard L. Pemsell
Mr. & Mrs. Nicholas Pyles
Ms. Nicole J. Rademan
Mr. & Mrs. Stephen Rademan
Mr. Lawrence Reich &
Ashley Wilkerson
Mr. & Mrs. Kenneth G.
Reinheimer
Mrs. Mary B. Rhodes M77
Ms. Sarah Ruchimer
Rosenn, Jenkins &
Greenwald, LLP
Mr. & Mrs. Bruce Rosenthal
Mr. Michael D. Rosenthal
Mrs. Margaret Samson
Attorney James J. Sandman

- Attorney & Mrs. David B. Sotz
Mr. Richard P. Schifter
Attorney Michael Schler
Attorney Michael Selzer
Mr. Garav J. Shah
Mrs. Susan W. Shoval, PCU
Ms. Tracy M. Smith
Mrs. Andrea G. Sorbom
Honorable & Mrs. Walter K.
Stapleton
Mr. Avi Szenberg
Attorney David L. Thomas
WVLA TV/FM
Mrs. Edward Welles
Ms. Jeanne C. Wideman 80
Mr. Brian Wildstein
Mr. David S. Wolf
Wyoming Valley Health Care
System, Inc.
Young Lawyers Div.
Lackawanna Bar Association
Mr. & Mrs. Richard J. Zack
Mr. Richard S. Zann
Mr. Jonah Zimles

- Ms. Barbara Weisburger
Dr. & Mrs. Daniel F. Weisberger
Mr. & Mrs. Dudley R. Weiss
Mrs. Helen Westenheffer
Mrs. Linda Y. Williams
Mrs. Rita G. Welberg
Mr. & Mrs. Donald S. Wuehler
Mr. Daniel J. Yeager
Mr. & Mrs. Andrew M. York
Mrs. Cheryl M. Yustat
Mr. & Mrs. Richard J. Zack
Mr. & Mrs. Alfonso Zaogardi
Ms. Anita M. Zapotoczny
Ms. Marie Zdaniewicz
Mr. & Mrs. Bruce R. Weidner
Ms. Lois N. Weinberg
Ms. Barbara J. Zuzewski

REPORT OF Gifts

Giving By Class

The Eugene Farley Club
GOLD CIRCLE
 \$500 - \$999
 Doris Gorka Bartuska*
 George F. Brodbeck
 Donald L. Honeywell
 Albert J. Stratton

BLUE CIRCLE
 \$250 - \$499
 Austin C. Bisbing, Jr.*
 Leonard J. Sheltime
 Joseph Sooby, Jr.

FARLEY ASSOCIATES
 \$100 - \$249
 Shirley Rees Fleet
 Thomas M. Gill*
 Peter Glowacki*
 James M. Hafford
 William G. Jones
 Dorothy Wilkes Lewis
 Jerome N. Mintzer
 Clemence A. Scott

CONTRIBUTORS
 Up to \$99
 Robert Anthony
 Jack W. Brobyn

John M. Culp, Jr.*
 Paul F. De Witt
 John H. Glowacki
 Lorraine Grisavage Glowacki
 Ralph F. Hodgson
 James Morrash
 Carol Weiss Morrison
 Raymond B. Williams

CLASS OF 1950
 * * *
 The John Wilkes Society
TRUSTEE ASSOCIATES
 \$10,000 - \$99,999
 Don C. Follmer*
 William Allan Plummer*

JOHN WILKES ASSOCIATES
 \$1,000 - \$2,499
 Betty Kanarr Bierly*
 Edwin L. Johnson
 Daniel Sherman

The Eugene Farley Club
GOLD CIRCLE
 \$500 - \$999
 Clyde H. Ritter

BLUE CIRCLE
 \$250 - \$499
 Robert S. Capin
 Dolores Passeri DiMaggio
 Jean Ditoro Erickson
 Walter E. Mokychie*

FARLEY ASSOCIATES
 \$100 - \$249
 Augustus C. Buzby*
 Frank Celmer*
 Barbara Medland Farley
 Paul E. Huff*
 Thomas J. Jordan
 Edward H. Lidz
 Virginia Meissner Nelson
 Samuel L. Owens
 Elva Fuller Parker
 Lawrence B. Pelesh
 Francis Pinkowski*
 Edgar C. Plummer
 Priscilla Sweeney Smith
 Robert L. Williams, Jr.

JOHN WILKES ASSOCIATES
 \$1,000 - \$2,499
 Betty Kanarr Bierly*
 Edwin L. Johnson
 Daniel Sherman

CONTRIBUTORS
 Up to \$99
 Edna Sabol Andrews
 Julius Brand
 Mary Porter Evans

Arlene Pletcher Garfield*
 Margaret Ashman Hodgson
 Raymond S. Kinback*
 William D. Kiselis
 Francis B. Krzywicki
 Mario E. Lizzi*
 Victor Minetola
 Angelo P. Pascucci
 William H. Perry
 John R. Semmer
 Gwenn Clifford Smith*
 Evan R. Sorber
 Allan Strassman*
 Anthony Urban*

CLASS OF 1951
 * * *
 The John Wilkes Society
TRUSTEE ASSOCIATES
 \$10,000 - \$99,999
 William A. Perlmuth

FOUNDER'S CIRCLE
 \$5,000 - \$9,999
 Nicholas A. Heineman
 Harry R. Hiscox

The Eugene Farley Club
GOLD CIRCLE
 \$500 - \$999
 Robert W. Hall

BLUE CIRCLE
 \$250 - \$499
 Joseph G. Bendoraitis
 Marvin Bransdorf
 Donald C. Kivler

FARLEY ASSOCIATES
 \$100 - \$249
 Leonard S. Anthony
 Patricia Boyd Brady
 Helene Donn Evans
 William L. Evans

FARLEY ASSOCIATES
 \$100 - \$249
 Albert T. Cole
 Paul J. Delmore
 Joseph A. Fattorini, Jr.
 William G. Hart
 Norma Carey Vale

CONTRIBUTORS
 Up to \$99
 Daniel S. Dzury
 Carl Albert Fosko*
 Howard A. Gonchar
 Joseph D. Piotrkowski

CONTRIBUTORS
 Up to \$99
 Shirley Salsburg Bernard
 Arthur W. Bloom
 Norman E. Cromack
 Carl H. DeWitt
 Wade W. Hayhurst
 George P. Heffernan, Jr.
 William Holak
 William J. Hopkins
 Harold J. Hymen
 Arthur A. Johnson
 Robert S. Tether
 Charles F. Woodring

CLASS OF 1952
 * * *
 The John Wilkes Society
TRUSTEE ASSOCIATES
 \$10,000 - \$99,999
 Nancy Ralston Grogan
 William J. Umphred, Sr.

JOHN WILKES ASSOCIATES
 \$1,000 - \$2,499
 Lee Ann Jakes Johnson*
 Robert McFadden
 Helen Bitler Ralston
 Gerald Smith*

The Eugene Farley Club
GOLD CIRCLE
 \$500 - \$999
 Carol Reynar Hall
 Adeline Elvis Stein
 Carroll Stein

BLUE CIRCLE
 \$249 - \$499
 J. Louis Bush
 Lorna Coughlin Darte
 Robert D. Morris

FARLEY ASSOCIATES
 \$100 - \$249
 Albert T. Cole
 Paul J. Delmore
 Joseph A. Fattorini, Jr.
 William G. Hart
 Norma Carey Vale

CONTRIBUTORS
 Up to \$99
 Daniel S. Dzury
 Carl Albert Fosko*
 Howard A. Gonchar
 Joseph D. Piotrkowski

Louis Polombo*
 Chia-In Wang Rutkowski
 Jean Nordstrom Sutherland
 John J. Yurck

CLASS OF 1953
 * * *
 The Eugene Farley Club
BLUE CIRCLE
 \$250 - \$499
 Elizabeth Badman Campbell
 William E. Caruth
 George McMahon

FARLEY ASSOCIATES
 \$100 - \$249
 Michael Herman, Jr.
 Philip D. Husband
 Joseph J. Kropiewnicki*
 Stephen C. Thomas
 Sandor Yelen

CONTRIBUTORS
 Up to \$99
 Paul B. Beers*
 Fay Jaffe Berg
 Myron N. Dungey

CLASS OF 1955
 * * *
 The John Wilkes Society
FOUNDER'S CIRCLE
 \$5,000 - \$9,999
 Richard L. Bunn

CONTRIBUTORS
 Up to \$99
 Paul B. Beers*
 Fay Jaffe Berg
 Myron N. Dungey
 Preston R. Eckmeder
 Leonard Feld
 Charles A. Giunta
 Dolores Roth Karassik
 Isabel Ecker Moore*
 Lucille Reese Pierce*
 Frank M. Radaszewski*
 Dorothy Hamaker Roden
 Myra Kornzweig Smulyan
 Leo E. Solomon*
 Elsie Giuliani Yarasheski
 Carol Jones Young

CLASS OF 1954
 * * *
 The John Wilkes Society
HONORARY ASSOCIATES
 \$100,000 - \$249,999
 Edward A. Venzel*

TRUSTEE ASSOCIATES
 \$10,000 - \$99,999
 Edward Grogan

JOHN WILKES ASSOCIATES
 \$1,000 - \$2,499
 Alexander D. Shaw III

The Eugene Farley Club
BLUE CIRCLE
 \$250 - \$499
 William R. Glace

FARLEY ASSOCIATES
 \$100 - \$249
 George J. Elias
 Lewis B. Giuliani
 Charles T. Reice
 Rodion J. Russin
 John B. Vale
 Albert J. Wallace

CONTRIBUTORS
 Up to \$99
 Thomas R. Adams
 James T. Atherton
 Harrison Cook
 Carl Karassik
 Joseph J. Mosier
 Katherine Goetzman Peckham
 June E. Stevens
 Peter Wurm

CLASS OF 1955
 * * *
 The John Wilkes Society
FOUNDER'S CIRCLE
 \$5,000 - \$9,999
 Richard L. Bunn

JOHN WILKES ASSOCIATES
 \$1,000 - \$2,499
 Dean A. Arvan*
 Leo R. Kane
 Charles M. Reilly

The Eugene Farley Club
GOLD CIRCLE
 \$500 - \$999
 Ronald J. Fitzgerald*

FARLEY ASSOCIATES
 \$100 - \$249
 J. Warren Blaker
 James W. Dull
 Howard E. Ennis, Jr.*
 Judith Hopkins
 Arthur E. Imdorf
 Dorothy E. Istvan
 John J. Kearney
 Mary Kozak Motsavage
 Russell R. Picton, Jr.
 David Rosser
 Louis F. Steck*
 Howard L. Updyke

CONTRIBUTORS
 Up to \$99
 Arthur R. Boote
 Roland E. Featherman*
 David L. Hoats*
 Barbara Winslow Howlett*
 Joshua J. Kaufman
 Leona Goldberg Markiewitz
 Doris Jane Sadowska Merrill*
 Joan Wachowski Michalski
 Albert F. Orzechowski
 John S. Prater
 Robert S. Rydzewski
 Thomas R. Sarnecky
 William W. Walp
 Edward E. Yarasheski

CLASS OF 1956
 * * *
 The John Wilkes Society
JOHN WILKES ASSOCIATES
 \$1,000 - \$2,499
 Patricia Stout Williams*

The Eugene Farley Club
GOLD CIRCLE
 \$500 - \$999
 Barbara Bialogawicz Fitzgerald
 Clarence C. Givens
 Joseph F. Wilk

BLUE CIRCLE
 \$250 - \$499
 Fred J. Boote
 Clifford R. Brautigan*
 James F. Ferris
 Michael J. Perlmuth
 Constance Kamarunas Schaefer*

FARLEY ASSOCIATES
 \$100 - \$249
 Marianna Kraynack Banash*
 Andrew V. Barovich
 Jean Kravitz Barry*
 George H. Battersson
 Mary Zavatski Croce
 Nancy Batcheler Juris
 Younsu Koo
 Robert V. Lynch*
 Joan Shoemaker
 Samuel R. Shugar
 Carl Van Dyke
 Victoria Zavatski Wallace
 Michael J. Weinberger
 Paul P. Zavada

CONTRIBUTORS
 Up to \$99
 Gail Laines Chase
 Louis P. DeFalco
 Henry W. Deibel
 Monroe H. Firestone
 Ralph S. Harrison*
 Helen Stoeckel Hessler
 Basia Mieszkowski Jaworski*
 Dolores O'Connell Kane*
 Dorcas Younger Koenigsberger*
 John P. Kushnerick
 Phyllis Schrader Mensch
 Chester H. Miller, Jr.
 Charles B. Neely
 Jan A. Oleginski*
 Benjamin Omilian
 Helen Krachenfels Reed
 David T. Shearer

CLASS OF 1957
 * * *
 The John Wilkes Society
TRUSTEE ASSOCIATES
 \$10,000 - \$99,999
 Eugene Roth

FOUNDER'S CIRCLE
 \$5,000 - \$9,999
 Seymour Holtzman
 William H. Tremayne

PRESIDENT'S CIRCLE
 \$2,500 - \$4,999
 Jesse H. Choper
 Leslie P. Weiner

JOHN WILKES ASSOCIATES
 \$1,000 - \$2,499
 Lawrence E. Cohen
 John S. Klimchak
 George Kolesar

The Eugene Farley Club
GOLD CIRCLE
 \$500 - \$999
 Bettijane Long Eisenpreis

BLUE CIRCLE
 \$250 - \$499
 Melvin E. McNew

FARLEY ASSOCIATES
 \$100 - \$249
 John L. Coates
 William M. Farish
 Vincent P. Herron, Jr.

Thomas J. Lane
 Robert W. McGurrian
 Richard Murray
 Nancy Morris Pheathen
 Charles W. Robinson
 John J. Schultz
 Jerome Stein
 Carl R. Urbanski

CONTRIBUTORS
 Up to \$99
 Larry D. Amdur
 Earl R. Bahl
 Lena Misson Baur
 Nasser N. Bonheur
 Robert B. Chase, Jr.
 Beverly Falkinburg Hildebrand
 Frances Hopkins Jordan
 Marie Zanowicz Kruska
 Jean Schraeder Kuchinskas
 Roland R. Leonard
 Frances Yeager Miller
 Patricia Reese Morris
 Lois Myers
 Martin J. Novak
 Phyllis Walsh Powell
 Bernard Rubin
 John J. Witinski

CLASS OF 1958
 * * *
 The John Wilkes Society
DIAMOND ASSOCIATES
 \$250,000 - \$499,999
 Harry J. Moyle*

FOUNDER'S CIRCLE
 \$5,000 - \$9,999
 Beverly Blakeslee Hiscox
 Robert A. Mugford

PRESIDENT'S CIRCLE
 \$2,500 - \$4,999
 Ronald D. Tremayne

JOHN WILKES ASSOCIATES
 \$1,000 - \$2,499
 Kelly J. Mather
 Bruce S. Warshal
 Don E. Wilkinson
 William I. J. Williams*

The Eugene Farley Club
GOLD CIRCLE
 \$500 - \$999
 Thomas I. Myers
 Peter R. Pisaneschi

REPORT OF Gifts

Giving By Class

Class Chairs & Agents

Gary H. Williams '72 M'79, the Alumni Campaign Chairperson, is a distinguished alumnus of the university who promoted annual unrestricted giving by contact with alumni/friends through various forms of communication. He also served as a source of advice in reviewing the plans and strategies relating to the direction of the Wilkes Fund.

Class Chairs are alumni who promote annual unrestricted giving, recruit Class Agents and offer their thoughts and experiences to Wilkes Fund Appeals to give them a personal touch.

Class Agents are alumni who communicate with classmates to add their positive experiences to Wilkes Fund Appeals to increase alumni giving participation.

Up to \$99
William J. Powell
Joseph W. Reese

GOLD CIRCLE
\$250 - \$499
Harry H. Davidson
Georgine Grubbs
Stewart J. Nornish
John Novak
Paul J. Tracy
David E. Webb
James Ward
Martha Davis Ward

FARLEY ASSOCIATES
\$100 - \$249
Margaret L. Allen
Cynthia Geringer Bissin
William J. Donovan
Merrill Grossman
Dorothy Minter Fink
Clarence Michael
Gerald Minton
Albert E. Mironow
Theresa Mironow Mironow
Janice Patricia Niss
Mary Craig Pugh
Warren W. Schmidt
Wanda Paszinski Sobel
Robert A. Sobot
Robert C. Szajkowski
Anthony W. Hanna
Susan Hoff Hunter
John G. Gering
Arthur S. Christman
Jane Jones Crawford
Burt George Davidson
Lee William Eckert
Hanna Esterfeld
Thomas E. Jenkins
Virginia Leonard
Joseph C. Maczuga
Carol Halia McGilley
Dorothy Galkowski Moran
Josephine Oliver Stevens
James J. Stone
Robert C. Suterland
David H. Weber
Richard E. Wozniak
Josephine K. Young

CONTRIBUTORS
Up to \$99
Charles S. Butler
Robert E. Davis
James L. Egan
Martin James Flanagan
Robert A. Frosch
E. Jennie Hill
Albert P. Buchnoskas
Sylvia Rapp Kully
Jean Grace McGowan
George S. Morris
Patricia Lee Pisaneschi
John S. Salsger
George R. Schall
John W. Stoenaber
Terry Lee Smith
Guzanne E. Sundberg
Marlene Levenoskie
Ann Barsam
David K. Wagner
Robert W. Walters

CLASS OF 1959
The John Wilkes Society
JOHN WILKES ASSOCIATES
\$1,000 - \$2,499
Samuel M. Davidson

Frederick J. Hills
Kathleen M. Mosbach
Lyone Moskowitz Warshel
The Eugene Farley Club
GOLD CIRCLE
\$500 - \$999
Robert J. Piel
BLUE CIRCLE
\$250 - \$499
Elizabeth Schuman King
Robert C. Morgan
Dorothy Scherer

FARLEY ASSOCIATES
\$100 - \$249
Jean Brody Azzar
Donald E. Daniels
Paul J. Earl
Eugene R. Eiselen
Charles J. Garris
Jane Norman Grunick
Loris Jago
Carl E. Jurek
John P. Karvick
John Q. Mack III
Edward McCafferty
Clayton J. Noveck
Lynn G. Pugh
Charles A. Suther
Arlene T. Tunkash
Rose M. Wernheim
Robert J. Wilkowsky
Ann Dixon Young
Carl W. Zwickler

CONTRIBUTORS
Up to \$99
Charles S. Butler
Robert E. Davis
James L. Egan
Martin James Flanagan
Robert A. Frosch
E. Jennie Hill
Albert P. Buchnoskas
Sylvia Rapp Kully
Jean Grace McGowan
George S. Morris
Patricia Lee Pisaneschi
John S. Salsger
George R. Schall
John W. Stoenaber
Terry Lee Smith
Guzanne E. Sundberg
Marlene Levenoskie
Ann Barsam
David K. Wagner
Robert W. Walters

CONTRIBUTORS
Up to \$99
Charles S. Butler
Robert E. Davis
James L. Egan
Martin James Flanagan
Robert A. Frosch
E. Jennie Hill
Albert P. Buchnoskas
Sylvia Rapp Kully
Jean Grace McGowan
George S. Morris
Patricia Lee Pisaneschi
John S. Salsger
George R. Schall
John W. Stoenaber
Terry Lee Smith
Guzanne E. Sundberg
Marlene Levenoskie
Ann Barsam
David K. Wagner
Robert W. Walters

CLASS OF 1960
The John Wilkes Society
FOUNDER'S CIRCLE
\$5,000 - \$9,999
Evelyn Krohn Holzman
JOHN WILKES ASSOCIATES
\$1,000 - \$2,499
Emilie Katz Gino
Peter W. Peleg

The Eugene Farley Club
GOLD CIRCLE
\$500 - \$999
Louis D. Davis, Jr.
Patricia A. Levandoski
Robert W. Verespy

BLUE CIRCLE
\$250 - \$499
Thomas P. Korshalla
John Walter Kluchinski
Nancy Jane Carroll Kolesar
William F. Raub

FARLEY ASSOCIATES
\$100 - \$249
Kay Lytle Amley
Beverly Nagle Barnick
Thomas Barnick
William J. Czaykowski
Alvin C. Jones
Beverlyann Butler Phillips
Ronald G. Phillips
Robert J. Simkus
Anthony J. Sullivan
Patricia Pushek Slubbe
Ray H. Vanwhy
Rave Thomas Willeman
Richard R. Willeman

CONTRIBUTORS
Up to \$99
Lynne Boyle Austin
Barbara Buchanan Edwards
Frank I. Edwards
Virginia Lyons Hoel
Jean Sabatino Ide
Patricia A. Krull
Marjorie Warburton Luster
Lou-Ella Merin
Donald Murray
Richard J. Myers
William D. Peters
John D. Phillips
Jadwiga Horbaczewski Price
Helen Schainick Rubin
Donald J. Sabatino

Andrew R. Sabol
Judith Ruggere Schall
Bernard R. Shupp
Basil Smith
Robert V. Stevens
C. Eugene Sticker
R. Dale Wagner
Robert D. Washburn
Frederick J. Williams
Raymond G. Yanchus
Emmanuel J. Zibro

CLASS OF 1961
The John Wilkes Society
PRESIDENT'S CIRCLE
\$2,500 - \$4,999
Fred R. Demech, Jr.

JOHN WILKES ASSOCIATES
\$1,000 - \$2,499
John Walter Kluchinski
Nancy Jane Carroll Kolesar
William F. Raub

The Eugene Farley Club
GOLD CIRCLE
\$500 - \$999
Stanley Hitchner Davis
Dorothy J. Ford
Patricia Boyle Heaman
Christopher H. Loesch, Jr.

BLUE CIRCLE
\$250 - \$499
Gill Ho Bai
Leonard M. Gonchar
Jay P. Keller
Albert P. Stralka

FARLEY ASSOCIATES
\$100 - \$249
Philip J. Amico
Marie Horoback Basia
Henry A. Grotzer
Nancy Rosenfeld Grotzer
Gale Hughes James
Maurice James
Benjamin J. Matteo
Mary Bender Pinkowski
Frank M. Scotch
James S. Skesavage
Judith Warnick
Jule Znaniecki Wnorowski

CONTRIBUTORS
Up to \$99
Martha Menegus Amadio
Janice Bronson Bartlett

Joseph I. Chisarik
Robert L. Dickerson
Joseph M. Druzowski
Robert J. Hewitt
Nancy Bonham Hontz
Margaret Churchill Kuffner
Robert A. Martin
Carl J. Meyers
Diana Williams Morgan
Joyce Roberts Murray
June Patrylak Nell
Emil J. Petrasek
Patricia Capers Petrasek
Arthur J. Rehn
John R. Rokuta
Beverly Major Schwartz

CLASS OF 1962
The John Wilkes Society
TRUSTEE ASSOCIATES
\$10,000 - \$99,999
Ruth Boorum Melberger

JOHN WILKES ASSOCIATES
\$1,000 - \$2,499
Mary Regalis Althausser
Gerald A. Moffatt

The Eugene Farley Club
BLUE CIRCLE
\$250 - \$499
Janet Simpson Dingman
Warren P. Greenberg
Joel P. Harrison
John A. Hosage

FARLEY ASSOCIATES
\$100 - \$249
Willard S. Achuff
Jane Downin Alderman
Theodore R. Begun
Jeremiah E. Berk
Phyllis Cackowski Kempinski
Brian J. O'Connell
Nancy A. Palazzolo
David C. Peters
Stephen E. Phillips
Patricia Rost Pflaum
Joseph W. Rabois
Michael A. Rusin
Stephen Selige
John E. Trudimack
Edward J. Wilk

CONTRIBUTORS
Up to \$99
Donald H. Bogert



A. John Dimond
Wilbur N. Dotier
David R. Edwards
Alice Cole Bartlett
Sandra S. Feldman
Florence Billings Finn
Evelyn Hudyek Gibbons
Andrew J. Hassay
Joyce Medlock Jones
John J. Miller
Joanne Pisaneschi Olejnick
David S. Peters
Marsha Heffran Peters
Raymond J. Peters
Carol Brushkoski Rehn
William A. Riskho
Stephen W. Schwartz*
Wayne W. Thomas
Helen M. Tinsley

CLASS OF 1963
The John Wilkes Society
FOUNDER'S CIRCLE
\$5,000 - \$9,999
Jerry A. Mohn
Rowena Simms Mohn
Harvey I. Rosen

JOHN WILKES ASSOCIATES
\$1,000 - \$2,499
Mary Regalis Althausser
Gerald A. Moffatt

The Eugene Farley Club
GOLD CIRCLE
\$500 - \$999
Erwin F. Guetig
Robert A. Ruggiero

FARLEY ASSOCIATES
\$100 - \$249
Willard S. Achuff
Jane Downin Alderman
Theodore R. Begun
Jeremiah E. Berk
Phyllis Cackowski Kempinski
Brian J. O'Connell
Nancy A. Palazzolo
David C. Peters
Stephen E. Phillips
Patricia Rost Pflaum
Joseph W. Rabois
Michael A. Rusin
Stephen Selige
John E. Trudimack
Edward J. Wilk

CONTRIBUTORS
Up to \$99
Donald H. Bogert

CONTRIBUTORS
Up to \$99
John S. Adams
Alice Cole Bartlett
Sandra S. Feldman
Florence Billings Finn
Evelyn Hudyek Gibbons
Andrew J. Hassay
Joyce Medlock Jones
John J. Miller
Joanne Pisaneschi Olejnick
David S. Peters
Marsha Heffran Peters
Raymond J. Peters
Carol Brushkoski Rehn
William A. Riskho
Stephen W. Schwartz*
Wayne W. Thomas
Helen M. Tinsley

CLASS OF 1964
The John Wilkes Society
PRESIDENT'S CIRCLE
\$2,500 - \$4,999
Rachael Phillips Dziak
Mary Kay Barrett Rotert

The Eugene Farley Club
GOLD CIRCLE
\$500 - \$999
Robert T. Bond
Gilbert A. Gregory
Alan C. Krieger

BLUE CIRCLE
\$250 - \$499
Richard O. Burns
Daniel J. Lyons

FARLEY ASSOCIATES
\$100 - \$249
Jeanne Dewep Attenborough
Jane Edwards Bonomo
Dana Saladan Del Bonts
Neil Dougherty
Lehand D. Feidenburg, II
John A. Gavenonis
Clinton G. Hess
Joseph Kruczek
Sally Cohen Levy
Richard Allan Morgan
Charles H. Schumann
Peter Whitebrake
Leonard A. Yankosky, II

CONTRIBUTORS
Up to \$99
Donald H. Bogert

CONTRIBUTORS
Up to \$99
John S. Adams
Alice Cole Bartlett
Sandra S. Feldman
Florence Billings Finn
Evelyn Hudyek Gibbons
Andrew J. Hassay
Joyce Medlock Jones
John J. Miller
Joanne Pisaneschi Olejnick
David S. Peters
Marsha Heffran Peters
Raymond J. Peters
Carol Brushkoski Rehn
William A. Riskho
Stephen W. Schwartz*
Wayne W. Thomas
Helen M. Tinsley

CLASS OF 1965
The John Wilkes Society
JOHN WILKES ASSOCIATES
\$1,000 - \$2,499
Catherine De Angelis
G. Joseph Rogers
B. William Vanderburg
Natalie Kowalski Vanderburg

The Eugene Farley Club
GOLD CIRCLE
\$500 - \$999
Edward J. Comstock
Anthony J. Parulis

BLUE CIRCLE
\$250 - \$499
Mary Field Grohowski
Ronald P. Grohowski
Ronald D. Kosmala

FARLEY ASSOCIATES
\$100 - \$249
Kenneth D. Anonim
Catherine Bealer Butler
David M. Cloustonman
Doris Evans Cloustonman
Erin McOrmack Gallagher
James R. Jenkins
Leslie Tobias Jenkins
Joseph Kruczek
Leon E. Obrian
Marian Markle Post
Josephine Signoretch Russin
Mary Russin
Judith Susa Showell
Donald W. Ungemah

CONTRIBUTORS
Up to \$99
Donald H. Bogert

CONTRIBUTORS
Up to \$99
John S. Adams
Alice Cole Bartlett
Sandra S. Feldman
Florence Billings Finn
Evelyn Hudyek Gibbons
Andrew J. Hassay
Joyce Medlock Jones
John J. Miller
Joanne Pisaneschi Olejnick
David S. Peters
Marsha Heffran Peters
Raymond J. Peters
Carol Brushkoski Rehn
William A. Riskho
Stephen W. Schwartz*
Wayne W. Thomas
Helen M. Tinsley

CLASS OF 1966
The John Wilkes Society
PRESIDENT'S CIRCLE
\$2,500 - \$4,999
Roger A. Rolfe

The Eugene Farley Club
GOLD CIRCLE
\$500 - \$999
Edward J. Comstock
Anthony J. Parulis

BLUE CIRCLE
\$250 - \$499
Mary Field Grohowski
Ronald P. Grohowski
Ronald D. Kosmala

FARLEY ASSOCIATES
\$100 - \$249
Kenneth D. Anonim
Catherine Bealer Butler
David M. Cloustonman
Doris Evans Cloustonman
Erin McOrmack Gallagher
James R. Jenkins
Leslie Tobias Jenkins
Joseph Kruczek
Leon E. Obrian
Marian Markle Post
Josephine Signoretch Russin
Mary Russin
Judith Susa Showell
Donald W. Ungemah

CONTRIBUTORS
Up to \$99
Donald H. Bogert

CONTRIBUTORS
Up to \$99
Judith Vilunas Barr
Mark E. Benicewicz
John S. Cavallini
Mark Cohen
Esther Schwartz Dorkin
Dwight E. Giles, Sr.
Carol Mazur Glowacki
Robert C. Harding
Georgia Bernice Jenkins
Grace Jones Kuzmas
W. David Larmouth II
Eugene A. Macur
Gloria Martin
E. Charles Perrillo
Donna Pudlosky Portantek
Martha Hovatt Redding
William Schneider
Jane Janick Stevens
Dolores Bonnie Simka
Estimate Bellina Kupko
Frederick E. Weber
Paul D. Wesley
Mary Zama

CLASS OF 1967
The John Wilkes Society
PRESIDENT'S CIRCLE
\$2,500 - \$4,999
Roger A. Rolfe

JOHN WILKES ASSOCIATES
\$1,000 - \$2,499
Michael A. Dziuk
Genald E. Weber

The Eugene Farley Club
GOLD CIRCLE
\$500 - \$999
Irene Mybowicz
Holzembaler
Shelden W. Lawrence

BLUE CIRCLE
\$250 - \$499
W. Marshall Evans
E. William Kayler, Jr.
Ruth Patricia Navram
James J. Vilunas

FARLEY ASSOCIATES
\$100 - \$249
Raymond E. Ardan
Paul Boyce
Richard H. Deque
Russell H. Jenkins
Barbara Lubosky Nowicki
William C. Pelego
Peter S. Phillips
Richard C. Rogers

CONTRIBUTORS
Up to \$99
Donald H. Bogert

Maureen Savage Szish
Windsor S. Thomas
William A. Treihaway
Elizabeth Dougherty Wood

CONTRIBUTORS

Up to \$99
Marian Klos Bahiak
Anna Bankos Cardoni
Barbara Simms Chamberlain
Sharon Torrey Everett
Virginia Rome Grabowski
Hiroko Ito Kanan
Jerry Kucirka
Vernie Shiposh Noecker
Charlotte Petersen
Janice Parsons Rebart
Daniel B. Rosencrance
Michael P. Sawczuk
Joseph Robert Settineri
Arlene Mezanke Sokolowski
Robert C. Sokolowski
Anthony E. Suda
Donna Troiano
Alfred S. Wayslow
Douglas W. Weber

CLASS OF 1968

The John Wilkes Society
HONORARY ASSOCIATES
\$100,000 - \$249,999
John R. Miller

TRUSTEE ASSOCIATES

\$10,000 - \$99,999
William P. Montague

JOHN WILKES ASSOCIATES

\$1,000 - \$2,499
Soni Stein Baltimore
Anne Heineman Batory
William R. Bush
Stuart A. Jed
Donald M. Kronick
Nicholas S. Reynolds

The Eugene Farley Club

GOLD CIRCLE
\$300 - \$999
William G. Cooper
Daniel Klem, Jr.
Esther Wargo McCormick

BLUE CIRCLE

\$250 - \$499
George E. Collinson
John H. Kennedy

A. Dan Murray
Edward J. Podehl
Elizabeth Scholl

FARLEY ASSOCIATES

\$100 - \$249
David D. Baum
Thomas Cebula
Joyce Christian Detter
Douglas D. Fawbush
Janis Hughes Fawbush
Nancy Leland Frey
Barry Gold
Zdzislawa Pajecj Harms
Marilyn Caprione Heffron
Teresa Cushman Hunt
Robert C. Klotz
Marian Zaledonis Kovacs
Gerald E. Missal
Lee M. Philo
Michael S. Pipan
Richard Seidel
George J. Sick
Elizabeth A. Slaughter
James D. Smith
Albert E. Stofko
Virginia Steckel Valentine

CONTRIBUTORS

Up to \$99
Roger S. Beatty
Judith E. Beyer
Anny Wiltshire Brower
Bruce R. Brown
Carol Tomaselli Brown
Frederick N. Brown
Richard G. Cantner
Beverly Shamun Carey
Nancy Noterman Downing
Eleanor Jachimczak Guzofsky
David W. Hess
Jaquelyn Rubin Kaplan
Donna Broda Kuliczekowski
James R. McGowan
Lee A. Namey
Patricia Haydt Nitchie
Robert T. Noecker
Peter T. Polishenski
Karen A. Reed
Susan E. Rowland
Robert A. Van Brunt Rowlands
Basil G. Russin
Judith Labows Sabatino
Thaddeus Seymour
Wayne A. Sittner
Frank J. Smith
Charles W. Snyder
Carl G. Sponenberg

JOHN WILKES ASSOCIATES

\$100 - \$249
Stuart J. Bass
Richard R. Bayliss
Barbara N. Bellucci
Bruce O. Brugel
Robert M. Burnat
John H. Butler
R. Bruce Comstock
Stephen C. Thurnau
Nathan G. Fink
Dennis P. Galli
Donna L. George
Karen S. Johnson
Bryn E. Kehrl
Charles A. Kosteva
John J. Moyer
George G. Pawlusch
Albert D. Roke

Michael Stefanick
Dorothy Eck Strauch
Edward H. Williams

CLASS OF 1969

The John Wilkes Society

FOUNDER'S CIRCLE
\$5,000 - \$9,999
John J. Chopack

PRESIDENT'S CIRCLE

\$2,500 - \$4,999
Cynthia Wisniewski Weber

JOHN WILKES ASSOCIATES

\$1,000 - \$2,499
Patrick J. Burke
Brian McGrath
Nancy Hawk Merryman
Paul A. Wender

The Eugene Farley Club

GOLD CIRCLE
\$500 - \$999
Raymond T. Downey
William E. Ryan, Jr.
Howard Weinberg

BLUE CIRCLE

\$250 - \$499
Dori S. Jaffe
Ann Alumbaugh McElyea
Cynthia West Reed
James S. Reed
Carol A. Skalski
Sharon G. Telban
Charles J. Tharp

FARLEY ASSOCIATES

\$100 - \$249
Stanley M. Pearlman
Jane Rifenberg Phillips
Patricia Dugan Reese
Robert W. Reynolds
Carlyle Robinson
Sally Griffiths Robinson
Sheila Schmaltz Scatena
Janet Lutz Thurnau
Robert C. Thurnau
William S. Tinney
Joseph C. Wiendl
Thomas P. Williams, Jr.
Carol Wolmelsdorf

Rozanne Sandri-Goldin
William C. Sherbin
Richard T. Simonson
George Sordoni
Donald C. Spruek
William Steel
Leonard E. Strope, Jr.
Margery Fishman Ufberg
Marjorie Shaffer Victor
Jeanne Martorelli Wideman
David C. Williams
Joseph Yozviak
Robert L. Zeglarski

CONTRIBUTORS

Up to \$99
Robert W. Ashton
Jeannette Spott Barnes
Earl E. Birely
Donald J. Chick
Carol Sladin Clothier
Lawrence B. Collins
Gillian Lindley Curtis
Henry M. Donati
Lillian Geida Dzwilefsky
Thomas R. Fox
Ronald J. Gabriel
John T. Harmer
Stewart J. Harry
Nicole LePochat Hartman
Anthony J. Honko
Kay L. Huber
Edward Janowski
Thaddeus M. Kalmanowicz
Joel Lubin
Raymond B. Luckenbach
Jean Peters McKeown
Lawrence J. McKeown, Jr.
Robert J. Murray
Stanley M. Pearlman
Jane Rifenberg Phillips
Patricia Dugan Reese
Robert W. Reynolds
Carlyle Robinson
Sally Griffiths Robinson
Sheila Schmaltz Scatena
Janet Lutz Thurnau
Robert C. Thurnau
William S. Tinney
Joseph C. Wiendl
Thomas P. Williams, Jr.
Carol Wolmelsdorf

CONTRIBUTORS

Up to \$99
Robert W. Ashton
Jeannette Spott Barnes
Earl E. Birely
Donald J. Chick
Carol Sladin Clothier
Lawrence B. Collins
Gillian Lindley Curtis
Henry M. Donati
Lillian Geida Dzwilefsky
Thomas R. Fox
Ronald J. Gabriel
John T. Harmer
Stewart J. Harry
Nicole LePochat Hartman
Anthony J. Honko
Kay L. Huber
Edward Janowski
Thaddeus M. Kalmanowicz
Joel Lubin
Raymond B. Luckenbach
Jean Peters McKeown
Lawrence J. McKeown, Jr.
Robert J. Murray
Stanley M. Pearlman
Jane Rifenberg Phillips
Patricia Dugan Reese
Robert W. Reynolds
Carlyle Robinson
Sally Griffiths Robinson
Sheila Schmaltz Scatena
Janet Lutz Thurnau
Robert C. Thurnau
William S. Tinney
Joseph C. Wiendl
Thomas P. Williams, Jr.
Carol Wolmelsdorf

BLUE CIRCLE

\$250 - \$499
Lonnie A. Coombs
Elaine Lundy Ephlin
Sandra Walters Sheruda
Anne Aimetti Thomas

FARLEY ASSOCIATES

\$100 - \$249
Anita Nowalis Bavitz
James C. Belles
Dave M. Bogusko
Andrew D. Cheplick
Marilyn Rabel Costanzo
Leigh Doane Donecker
Bernard P. Evanofski
Jay H. Goldstein
Mary Carol Hornyak
William C. Johnson
Mary A. Kaiser
Barbara Gonzales Kende
Charles D. Lengle
Andrew C. Matviak
Barbara L. Nanstiel
Judith Cobleigh Ockenfuss
Robert E. Ockenfuss
Lee Paige
Melvin C. Rogers, Jr.
Neil M. Seidel
David S. Silberman
Susan Ryan Simonson
Dolores Nunn Smith
Richard Wetzel

CLASS OF 1970

The John Wilkes Society
TRUSTEE ASSOCIATES
\$10,000 - \$99,999
John Michael Cefaly, Jr.
Margaret Filipkowski Sordoni

JOHN WILKES ASSOCIATES

\$1,000 - \$2,499
Dan F. Kopon

The Eugene Farley Club

GOLD CIRCLE
\$500 - \$999
Renée Mucci Klem
J. David Lombardi
Joseph R. Putrush
Janice A. Saunders
Janet Neiman Secey
Barbara Morrison Squeri
John E. Squeri
Marvin L. Stein
William R. Tarbart

BLUE CIRCLE

\$250 - \$499
Elaine Lundy Ephlin
Sandra Walters Sheruda
Anne Aimetti Thomas

FARLEY ASSOCIATES

\$100 - \$249
Anita Nowalis Bavitz
James C. Belles
Dave M. Bogusko
Andrew D. Cheplick
Marilyn Rabel Costanzo
Leigh Doane Donecker
Bernard P. Evanofski
Jay H. Goldstein
Mary Carol Hornyak
William C. Johnson
Mary A. Kaiser
Barbara Gonzales Kende
Charles D. Lengle
Andrew C. Matviak
Barbara L. Nanstiel
Judith Cobleigh Ockenfuss
Robert E. Ockenfuss
Lee Paige
Melvin C. Rogers, Jr.
Neil M. Seidel
David S. Silberman
Susan Ryan Simonson
Dolores Nunn Smith
Richard Wetzel

Frances Jasulewicz Youngblood
Donna-Su Brown Zeglarski

CONTRIBUTORS

Up to \$99
Carl J. Babushko
Phyllis Sun Cheng
Karen Kelly Chopolis
Steven Chromey
Carl L. Cook
Anita Rein Coplan
Ronald J. Delese
Phyllis L. Gaydos
Susan Trenkamp Harmer
David W. Kutz
Owen M. Lavery
Joseph A. Lukesh
Sandra Strevell Miller
Marion Boyle Petrillo
Phyllis A. Petrosky
John A. Sileski
Evelyn Rygwalski Snyder
Kaye Harding Stefanick
Elva Costello Valentine

CLASS OF 1971

The John Wilkes Society

JOHN WILKES ASSOCIATES
\$1,000 - \$2,499
George J. Matz
Jonathan D. Schiffman

The Eugene Farley Club

GOLD CIRCLE
\$500 - \$999
John R. Deem
Bonnie S. Gellas
Rachael Walison Lohman
Patricia Mazzeo Lombardi

BLUE CIRCLE

\$250 - \$499
Ellen Arthur Davenport
John J. Flynn
Barbara Durkin Kirmse
Barbara Roman Knezek
George H. Knezek, Jr.

FARLEY ASSOCIATES

\$100 - \$249
Miriam Mohr Bayliss
Terry A. Belles
Beverly Peirce Berger
Thomas J. Brennan
Leonard J. Brozna
James L. Butkiewicz
Mary Ellen Fischer Butkiewicz

Robert H. Davis
Susan Staniorski Davis
Daniel R. Gennett
Cherylynn Petyak Gibson
Joseph N. Ishley
William J. Murphy
Barbara Ward Nixon
Judith Potestivo Ogin
Richard E. Ogin
Jean Gordon Otto
Kenneth Rosencrance
George M. Shendock
Andrew R. Sinnott
William Umbach
Larry R. Volkel
Cheryl Konopki Zdeb
Joseph T. Zimmerman

CONTRIBUTORS

Up to \$99
Daniel L. Alters
John C. Baranowski
Mary Nasielski Battista
Mary MacArthur Bennett
John P. Cherundolo
Richard D. Ciuferri
John J. Cusumano
Emil F. DiTullio
Rita S. Du Brow
Ronald J. Jacobs
Alvin Justan
Eileen Moniak Kackenmeister
Stephen E. Kaschenbach
Carol Roke Klinetob
Carol Hoffman Lavery
Colleen Propersi Lindsay
Pauline Kmetz Makowski
Albert C. Martin
Gerald P. McAfee
Susan Himelfarb Murphy
Carole Peeler
Ronald L. Pryor
Dennis J. Puhalla
David Reel
William E. Reese
Bruce A. Sabacek
Joseph T. Sallitt
Della F. Schulz
Cassandra Moss Sharkus
Wendy Rieder Simko
Bruce D. Simon
Elaine A. Slabinski
Robert J. Tarone
Mary Ellen Pointek Tracy
Barbara Young Wagner
Eugene H. Wagner, Jr.
Robert R. Walp
James C. Weaver

Nancy Charles Williams
Lucretia Geiger Woolf

CLASS OF 1972

The John Wilkes Society

JOHN WILKES ASSOCIATES
\$1,000 - \$2,499
Anthony M. Cardinale
Laura Barbera Cardinale
James Garofalo
William A. Hanbury
Gary H. Williams

The Eugene Farley Club

GOLD CIRCLE
\$500 - \$999
Michael M. Mariani

BLUE CIRCLE

\$250 - \$499
Robert J. Cooney
Sopon Dewitya
Eric D. Hoover
Nazzareno E. Paciotti
Eugene G. Pappas

FARLEY ASSOCIATES

\$100 - \$249
Thomas A. Costanzo
Helene Kuchinskas Dainowski
Sheila Denion
Harvey A. Jacobs
G. Garfield Jones, Jr.
Anthony V. Kleinhaus
Barbara Repotski Lach
Kathryn Ramsey Massey
Frances Aiken Mitchell
David E. Roberts
Enid Sullum Tope
Daniel R. Walters
Linda Bray Walters
Theodore T. Yeager
Alan E. Zellner

CONTRIBUTORS

Up to \$99
Robert M. Babskic
Stephen G. Balla
Joanne Wascolonis Barnak
Bruce D. Bordow
Rita Ryneski Borzatti
Mariel Denisco Bufano
Robert A. Byrne
Barbara Aulisio Camoni
Thomas P. Casey
Richard Chisarick
Carol Manara Clark

Guy J. Comparetta
Sandra Holl Comparetta
Alice Hadsall Davis
Frank Dessoye
Anne Musto-Van Noy Dragon
Larry D. Fabian
Jane A. Firestine
Jill Yanoshak Gagliardi
Barbara Demko Garcia
George B. Gettinger
Kathleen Koterba Goobic
James A. Gribb
Benjamin R. Jones
Patricia Baranowski Julia
Jacquelyn Van Tuyle Kelly
Alexis Buchina Koss
William J. Lukridge
Leonard Matysczak
Marianne Kolyejchick Matysczak
Jacqueline Falk McGinley
Rosemary Barata Novak
Carlton E. Phillips
Patricia Phillips
Anne Gruscavage Sample
Linda Samuel-Bickford
Linda Burkhardt Schultz
Shirley Guiles Shannon
Donna Ayers Snelson
Brent S. Spiegel
Barbara McNicholl Scarpino
Joan Tyree
Beverly Bomba Vespico
Dborah Berti Walsh
Anne Agolino Wasko
Richard A. Weinstein
Stanley J. Yunkunis

JOHN WILKES ASSOCIATES

\$1,000 - \$2,499
Anthony M. Cardinale
Laura Barbera Cardinale
James Garofalo
William A. Hanbury
Gary H. Williams

CLASS OF 1973

The John Wilkes Society

PLATINUM ASSOCIATES
\$500,000 or more
Jay S. Sidhu

FOUNDER'S CIRCLE

\$5,000 - \$9,999
Marino J. Santarelli

PRESIDENT'S CIRCLE

\$2,500 - \$4,999
Charles P. Baker

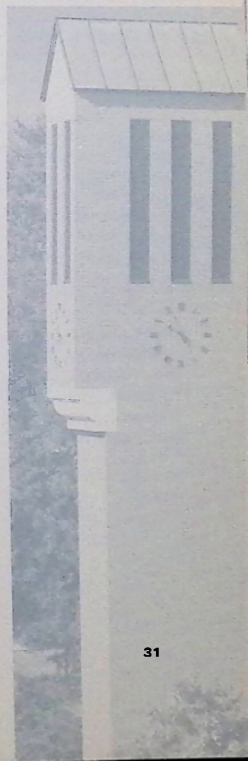
The Eugene Farley Club

GOLD CIRCLE
\$500 - \$999
Rosemaria J. Cienciana Sorg
Edward M. Moyer
Bruce E. Phair

BLUE CIRCLE
\$250 - \$499
Nathan R. Eustis, Jr.
Robert P. Matley
Lloyd W. Ortman, Jr.

FARLEY ASSOCIATES

\$100 - \$249
Irene B. Blum
Diane Chisarick Brennan
Yvonne Gnatt Casey
John Dubik
Joel Fischman
Robert D. Goldstein
Elaine Swisloski Herstek
Drew M. Klemish
John G. Margo
Pamela Parkin Murphy
Barbara Zembrzuski Pisano
John R. Pisano
David L. Ritter
Brenda Schmidt Silberman
Theodore J. Tramaloni
Stephanie Pulko Umbach



FARLEY ASSOCIATES
Up to \$500
Angela L. Canella
Janice Carl Desoubray
Robert L. Deegan
Christie Youngblood Gennett
Suzanne Patricia Gubbitt
Susan Lewis Keith
John J. Kowalski
Lorene Daring Laberge
Deanne Matis
John J. Mazzolla
Michael J. O'Boyle
Mark A. Sipeck
Blaine South Traynor
Angela T. Vance
Susan Wasko
Helen-chih Wu
Margaret A. Zolner

CONTRIBUTORS

Up to \$99
Shelley G. Abraham
Linda Sotoma Allano
Philip E. Aaron
Diane Salzer Bloss
Minna N. Brzezinska
Gene A. Cantoni
Denise H. Chapin
Julia K. Chmielewski
Joseph C. Damiano
Richard B. Daniels
Charles D. Denkerberger
Alexis Wasko Edwards
Michael G. Hiseck
Elaine Owen Hooley
Robert T. Hooley
Karen Cerep Jones
Warren J. Kane
Anna Pasley Leonard
Richard H. Lopasto, Jr.
Donald W. Ludovick
Constance Donahue Mayo
Elizabeth Grady McNamara
Debra Ann Rogers Morgan
John S. Parilla
Maureen Beil Parilla
Ray M. Percuch
William A. Saba
Margaret A. Sauer
Suzanna Gopale Sherman
Charles H. Shuler
Robert E. Singer
Donald Vespeo, Jr.
Paul M. Winkler Whalen
Linda Williams
John Paul Worsfold

Constance Cheplick Wozniak
Robert B. Zettle

CLASS OF 1975

The John Wilkes Society
PRESIDENT'S CIRCLE
\$2,500 - \$4,999
William R. Thomas

JOHN WILKES ASSOCIATES
\$1,000 - \$2,499
Dawn L. Davis
Irwin E. Hilschke
Michael A. Piatrowski
Mark A. Van Loon

The Eugene Farley Club
GOLD CIRCLE

\$500 - \$999
Andrew E. Baron
Christine M. Bushlow

BLUE CIRCLE
\$250 - \$499

Cynthia Lenahan Bradbury
William R. Bradbury
Joan Zaleski Ford
Nelson G. Landmesser
Michael G. Stambaugh

FARLEY ASSOCIATES
\$100 - \$249

Ann Dyleski Armstrong
Mary O'Brien Callahan
Kevin G. Dawleski
Brian M. Finn
Ellen Schwartz Fischman
Edward F. Gotski
Brian K. Hertzler
Robert S. Howes, Jr.
Barbara A. Kapish
Susan Tow Lewis
Robert B. Milmoie
George M. Offshack
Clarence G. Ozgo
Sally Chupka Pucilowski
Nancy F. Snee
Jane E. Thompson
Carol Drahus-Widloski
Gloria Zoranski

CONTRIBUTORS

Up to \$99
Alyce Swatch Cardoni
Philip J. Conrad, Jr.
Robert A. Dombroski
Marilyn F. Dombroski

Marla Stepilski Flach
Raymond P. Guetaver
Michael Hater
Harold L. Hovener
Bertram Myers Hurnick
David C. Kawaleta
Francis S. Kuczynski
William E. Lee, Sr.
Cheryl S. Lavey
Catherine Lint
Michael Luberto
Carol A. Martin
Alan R. Miller
Sharon M. Pavidias
Robert D. Salsburg
Joan Bonfanti Shannon
Barbara Katrina Swiatek
Nancy Rudick Topolewski

CLASS OF 1976

The John Wilkes Society
PRESIDENT'S CIRCLE
\$2,500 - \$4,999
Richard J. Bape

JOHN WILKES ASSOCIATES
\$1,000 - \$2,499
James J. Wingers

The Eugene Farley Club
GOLD CIRCLE

\$500 - \$999
Richard J. Alan

BLUE CIRCLE

\$250 - \$499
Carroliann Guggenbiss Besler
Philip A. Besler
Joseph J. Marchetti

FARLEY ASSOCIATES

\$100 - \$249
Stephen M. Baioga, Jr.
Detlorah Lufaro Cargo
Gail Macgregor Doherty
Thomas D. Gosser
Diane R. Jones
Gay Foster Meyers
Raymond B. Ostrowski
Suzanne Flutabayson
Vilma Schifano Milmoie
Patricia A. Schillaci
M. Susan Stephens
Richard J. Sullivan
William Applegate
William G. Winter

CONTRIBUTORS

Up to \$99
Donald J. Aniceli
Marjorie Montague Benjamin
Paula Cipriano Bodnar
Maryrose Bendik Burlington
Karen Yates Cino
Terry L. Coombs
Andrea Mahaly Danilack
Joseph Dentmore
Deborah Gadoski Eastwood
David L. Ellis
Susan V. Fielder
Jane Lewis Ford
William Fromel
Alan E. Juckier
Dorice Subaleski Januszewicz
Noel A. Jorgensen
Marjanne Nadur Kerpcho
Margaret Burgess Lemhan
Joan Demarski Leska
John E. Marasick, Jr.
Anthony L. McEagh
Kathleen Vismisio Prasczak
Janet Baruski Rajchel
Iryca Grotier Regan
Harold W. Roberts
Joseph E. Romani
Thomas Ramevauz
Richard A. Rutkowski
Paul Skordinski
Jane E. Smith
Amy Samelli Wennehouse
Robert W. Zamoski

CLASS OF 1977

The John Wilkes Society
TRUSTEE ASSOCIATES
\$10,000 - \$99,999
Denise Schmal Cesare

FOUNDER'S CIRCLE

\$5,000 - \$9,999
Patrice Stone Martin
Mary Helen Rhodes

PRESIDENT'S CIRCLE
\$2,500 - \$4,999
Sandra Shepard Pecone

JOHN WILKES ASSOCIATES
\$1,000 - \$2,499
Paul S. Adams
Drew Landmesser
Kim Withrow Morgan

The Eugene Farley Club
FARLEY ASSOCIATES

\$100 - \$249
Holly G. Daab
Joseph W. Buckley
Nicholas P. Chimento
Ruth McKalips Diestelmeier
Andrew B. Durako, Jr.
Victoria Moss Gallagher
Michael J. Kassah
Richard D. Mutarelli
Catherine Williams Ozgo
Deborah A. Sears
James J. Stehle
Patricia Reilly Urosevich
Maria Leandri Yonki
John M. Zubris

CONTRIBUTORS

Up to \$99
Michael S. Anger
Kathleen Warakowski
Benjamin
Joan Chemnitz Best
Raymond A. Best
Brian E. Boston
Louis J. Caputo
Arthur S. Daniels
Donna Smith Dickinson
Paul J. Domowitch
Dane A. Drasher
Chester F. Dudick
Manuel J. Evans
Ronald G. Evans
Mary Lento Flood
Judith Blenkowski Geary
Kenneth A. Geary
Neil A. Giacometti
Louise Burkiewicz Goudwin
Susan M. Hansen
Gene A. Heath
Bridget James Holman
Karen Kuchuskius Kaminski
Joanne Englert Kawczynski
Deborah Koehler Koons
Patricia A. Kozick
Rick D. Mahonski
Dorothy Kay Martin
Earl W. Monk
Mary Kay Malloy Pappadatos
Edward J. Papp
Joseph W. Sekinsky
Patricia S. Steele
Inez S. Sclabko
Patrick A. Ward

FARLEY ASSOCIATES
\$100 - \$249
Joanne Pugliese Carpenter
Ronna Colvin Clark
Dean W. Evans
Edward J. Finn
Paul J. Gallagher
James J. Moran
Barry J. Niziolek
David A. Palanzo
Terry J. Schaefer
Tina Falcone Stehle
John K. Suchuski

CONTRIBUTORS
Up to \$99
Karen Kennedy Campbell
Paula Heffernan Daley
James M. Danko
Mark Imbelstein
Gary E. Gardner
Sheryl Price Hewitt
Richard E. Holman
Carol Fashluk Huggler
Andrea Chiba Kralcy
Joan Johnson Lipski
John J. Alack
Joseph S. Mayhull
Anto Marie Michan
Jan A. Miller
Stewart W. Bar III
Mary Fern Reynolds

CLASS OF 1978

The John Wilkes Society
PRESIDENT'S CIRCLE
\$2,500 - \$4,999
Rhea Politis Simms

JOHN WILKES ASSOCIATES
\$1,000 - \$2,499
Jean Reiter Adams
Raymond E. Dombroski
Brigette McDonald Herrmann
Judith Mills Mack

The Eugene Farley Club
GOLD CIRCLE

\$500 - \$999
Terri Mackavage Kovalski
Gregory A. MacLean
Susan Levens MacLean

BLUE CIRCLE
\$250 - \$499
David A. Jolley
Cynthia M. Patterson

FARLEY ASSOCIATES
\$100 - \$249
Joanne Pugliese Carpenter
Ronna Colvin Clark
Dean W. Evans
Edward J. Finn
Paul J. Gallagher
James J. Moran
Barry J. Niziolek
David A. Palanzo
Terry J. Schaefer
Tina Falcone Stehle
John K. Suchuski

The Eugene Farley Club
GOLD CIRCLE

\$500 - \$999
Terri Mackavage Kovalski
Gregory A. MacLean
Susan Levens MacLean

The Eugene Farley Club
GOLD CIRCLE

\$500 - \$999
Terri Mackavage Kovalski
Gregory A. MacLean
Susan Levens MacLean

BLUE CIRCLE
\$250 - \$499
David A. Jolley
Cynthia M. Patterson

FARLEY ASSOCIATES
\$100 - \$249
Joanne Pugliese Carpenter
Ronna Colvin Clark
Dean W. Evans
Edward J. Finn
Paul J. Gallagher
James J. Moran
Barry J. Niziolek
David A. Palanzo
Terry J. Schaefer
Tina Falcone Stehle
John K. Suchuski

CONTRIBUTORS
Up to \$99
Karen Kennedy Campbell
Paula Heffernan Daley
James M. Danko
Mark Imbelstein
Gary E. Gardner
Sheryl Price Hewitt
Richard E. Holman
Carol Fashluk Huggler
Andrea Chiba Kralcy
Joan Johnson Lipski
John J. Alack
Joseph S. Mayhull
Anto Marie Michan
Jan A. Miller
Stewart W. Bar III
Mary Fern Reynolds

CONTRIBUTORS
Up to \$99
Kathleen Warakowski
Benjamin
Joan Chemnitz Best
Raymond A. Best
Brian E. Boston
Louis J. Caputo
Arthur S. Daniels
Donna Smith Dickinson
Paul J. Domowitch
Dane A. Drasher
Chester F. Dudick
Manuel J. Evans
Ronald G. Evans
Mary Lento Flood
Judith Blenkowski Geary
Kenneth A. Geary
Neil A. Giacometti
Louise Burkiewicz Goudwin
Susan M. Hansen
Gene A. Heath
Bridget James Holman
Karen Kuchuskius Kaminski
Joanne Englert Kawczynski
Deborah Koehler Koons
Patricia A. Kozick
Rick D. Mahonski
Dorothy Kay Martin
Earl W. Monk
Mary Kay Malloy Pappadatos
Edward J. Papp
Joseph W. Sekinsky
Patricia S. Steele
Inez S. Sclabko
Patrick A. Ward

CONTRIBUTORS
Up to \$99
Kathleen Warakowski
Benjamin
Joan Chemnitz Best
Raymond A. Best
Brian E. Boston
Louis J. Caputo
Arthur S. Daniels
Donna Smith Dickinson
Paul J. Domowitch
Dane A. Drasher
Chester F. Dudick
Manuel J. Evans
Ronald G. Evans
Mary Lento Flood
Judith Blenkowski Geary
Kenneth A. Geary
Neil A. Giacometti
Louise Burkiewicz Goudwin
Susan M. Hansen
Gene A. Heath
Bridget James Holman
Karen Kuchuskius Kaminski
Joanne Englert Kawczynski
Deborah Koehler Koons
Patricia A. Kozick
Rick D. Mahonski
Dorothy Kay Martin
Earl W. Monk
Mary Kay Malloy Pappadatos
Edward J. Papp
Joseph W. Sekinsky
Patricia S. Steele
Inez S. Sclabko
Patrick A. Ward

CONTRIBUTORS
Up to \$99
Kathleen Warakowski
Benjamin
Joan Chemnitz Best
Raymond A. Best
Brian E. Boston
Louis J. Caputo
Arthur S. Daniels
Donna Smith Dickinson
Paul J. Domowitch
Dane A. Drasher
Chester F. Dudick
Manuel J. Evans
Ronald G. Evans
Mary Lento Flood
Judith Blenkowski Geary
Kenneth A. Geary
Neil A. Giacometti
Louise Burkiewicz Goudwin
Susan M. Hansen
Gene A. Heath
Bridget James Holman
Karen Kuchuskius Kaminski
Joanne Englert Kawczynski
Deborah Koehler Koons
Patricia A. Kozick
Rick D. Mahonski
Dorothy Kay Martin
Earl W. Monk
Mary Kay Malloy Pappadatos
Edward J. Papp
Joseph W. Sekinsky
Patricia S. Steele
Inez S. Sclabko
Patrick A. Ward

CONTRIBUTORS
Up to \$99
Kathleen Warakowski
Benjamin
Joan Chemnitz Best
Raymond A. Best
Brian E. Boston
Louis J. Caputo
Arthur S. Daniels
Donna Smith Dickinson
Paul J. Domowitch
Dane A. Drasher
Chester F. Dudick
Manuel J. Evans
Ronald G. Evans
Mary Lento Flood
Judith Blenkowski Geary
Kenneth A. Geary
Neil A. Giacometti
Louise Burkiewicz Goudwin
Susan M. Hansen
Gene A. Heath
Bridget James Holman
Karen Kuchuskius Kaminski
Joanne Englert Kawczynski
Deborah Koehler Koons
Patricia A. Kozick
Rick D. Mahonski
Dorothy Kay Martin
Earl W. Monk
Mary Kay Malloy Pappadatos
Edward J. Papp
Joseph W. Sekinsky
Patricia S. Steele
Inez S. Sclabko
Patrick A. Ward

CONTRIBUTORS
Up to \$99
Kathleen Warakowski
Benjamin
Joan Chemnitz Best
Raymond A. Best
Brian E. Boston
Louis J. Caputo
Arthur S. Daniels
Donna Smith Dickinson
Paul J. Domowitch
Dane A. Drasher
Chester F. Dudick
Manuel J. Evans
Ronald G. Evans
Mary Lento Flood
Judith Blenkowski Geary
Kenneth A. Geary
Neil A. Giacometti
Louise Burkiewicz Goudwin
Susan M. Hansen
Gene A. Heath
Bridget James Holman
Karen Kuchuskius Kaminski
Joanne Englert Kawczynski
Deborah Koehler Koons
Patricia A. Kozick
Rick D. Mahonski
Dorothy Kay Martin
Earl W. Monk
Mary Kay Malloy Pappadatos
Edward J. Papp
Joseph W. Sekinsky
Patricia S. Steele
Inez S. Sclabko
Patrick A. Ward

CONTRIBUTORS
Up to \$99
Kathleen Warakowski
Benjamin
Joan Chemnitz Best
Raymond A. Best
Brian E. Boston
Louis J. Caputo
Arthur S. Daniels
Donna Smith Dickinson
Paul J. Domowitch
Dane A. Drasher
Chester F. Dudick
Manuel J. Evans
Ronald G. Evans
Mary Lento Flood
Judith Blenkowski Geary
Kenneth A. Geary
Neil A. Giacometti
Louise Burkiewicz Goudwin
Susan M. Hansen
Gene A. Heath
Bridget James Holman
Karen Kuchuskius Kaminski
Joanne Englert Kawczynski
Deborah Koehler Koons
Patricia A. Kozick
Rick D. Mahonski
Dorothy Kay Martin
Earl W. Monk
Mary Kay Malloy Pappadatos
Edward J. Papp
Joseph W. Sekinsky
Patricia S. Steele
Inez S. Sclabko
Patrick A. Ward

CONTRIBUTORS
Up to \$99
Kathleen Warakowski
Benjamin
Joan Chemnitz Best
Raymond A. Best
Brian E. Boston
Louis J. Caputo
Arthur S. Daniels
Donna Smith Dickinson
Paul J. Domowitch
Dane A. Drasher
Chester F. Dudick
Manuel J. Evans
Ronald G. Evans
Mary Lento Flood
Judith Blenkowski Geary
Kenneth A. Geary
Neil A. Giacometti
Louise Burkiewicz Goudwin
Susan M. Hansen
Gene A. Heath
Bridget James Holman
Karen Kuchuskius Kaminski
Joanne Englert Kawczynski
Deborah Koehler Koons
Patricia A. Kozick
Rick D. Mahonski
Dorothy Kay Martin
Earl W. Monk
Mary Kay Malloy Pappadatos
Edward J. Papp
Joseph W. Sekinsky
Patricia S. Steele
Inez S. Sclabko
Patrick A. Ward

William D. Sparks
Robert J. Sufko

Margaret Cosgrove Tuckman
Jacqueline Ann Vitek
Linda Allmon Walden
David J. Yakatis
Maryjean Desandes

CLASS OF 1979

The John Wilkes Society
PRESIDENT'S CIRCLE
\$2,500 - \$4,999
Jeffrey S. Giberson

JOHN WILKES ASSOCIATES
\$1,000 - \$2,499
Betsy Bell Condron
Frederick W. Herrmann

The Eugene Farley Club
GOLD CIRCLE

\$500 - \$999
Roger J. Davis
William A. Shaw
Edward J. White III

BLUE CIRCLE
\$250 - \$499
Michael W. Chaszak
James L. Dewdney
Andrew N. Janquinio
Patricia L. Warski
Shepard C. Willner

FARLEY ASSOCIATES
\$100 - \$249
Barbara C. Agurkis
Steven L. Bailey
Renee Venarucci Benedetto
Karen Lucchesi Bestrom
Donald E. Horvov
David F. Hungarter, Jr.
Nancy Jane Johnson
Carol Corbett Pawlisch
Thomas P. Sokola

CONTRIBUTORS
Up to \$99
Michael J. Briel
Lisa Cando Chilson
Lawrence J. Mullen
Mary McInale Schall
Patricia DeMko Sweeney

CONTRIBUTORS
Up to \$99
David G. Arrigoni
Richard J. Borsicki
Michael A. Breda
Kathleen Roman Davis
Nancy Winkler Droscher
Cynthia Fedy Evans
Ronald J. Grosse

CONTRIBUTORS
Up to \$99
David G. Arrigoni
Richard J. Borsicki
Michael A. Breda
Kathleen Roman Davis
Nancy Winkler Droscher
Cynthia Fedy Evans
Ronald J. Grosse

CONTRIBUTORS
Up to \$99
David G. Arrigoni
Richard J. Borsicki
Michael A. Breda
Kathleen Roman Davis
Nancy Winkler Droscher
Cynthia Fedy Evans
Ronald J. Grosse

CONTRIBUTORS
Up to \$99
David G. Arrigoni
Richard J. Borsicki
Michael A. Breda
Kathleen Roman Davis
Nancy Winkler Droscher
Cynthia Fedy Evans
Ronald J. Grosse

CONTRIBUTORS
Up to \$99
David G. Arrigoni
Richard J. Borsicki
Michael A. Breda
Kathleen Roman Davis
Nancy Winkler Droscher
Cynthia Fedy Evans
Ronald J. Grosse

CONTRIBUTORS
Up to \$99
David G. Arrigoni
Richard J. Borsicki
Michael A. Breda
Kathleen Roman Davis
Nancy Winkler Droscher
Cynthia Fedy Evans
Ronald J. Grosse

Maureen Shay Perendergat
Geraldine Czavatta Samolski
Mary Ann Morgan Stelma
Lawrence P. Vojtko
Cheryl Berry Washington
Karen Prigge Williams

CLASS OF 1980

The John Wilkes Society
JOHN WILKES ASSOCIATES
\$1,000 - \$2,499
Kathleen Sweeney Ashton
Scott W. Ashton
James P. Edwards
Thomas N. Balston

The Eugene Farley Club
GOLD CIRCLE

\$500 - \$999
Roger J. Davis
William A. Shaw
Edward J. White III

BLUE CIRCLE
\$250 - \$499
Michael W. Chaszak
James L. Dewdney
Andrew N. Janquinio
Patricia L. Warski
Shepard C. Willner

FARLEY ASSOCIATES
\$100 - \$249
Barbara C. Agurkis
Steven L. Bailey
Renee Venarucci Benedetto
Karen Lucchesi Bestrom
Donald E. Horvov
David F. Hungarter, Jr.
Nancy Jane Johnson
Carol Corbett Pawlisch
Thomas P. Sokola

CONTRIBUTORS
Up to \$99
Michael J. Briel
Lisa Cando Chilson
Lawrence J. Mullen
Mary McInale Schall
Patricia DeMko Sweeney

CONTRIBUTORS
Up to \$99
David G. Arrigoni
Richard J. Borsicki
Michael A. Breda
Kathleen Roman Davis
Nancy Winkler Droscher
Cynthia Fedy Evans
Ronald J. Grosse

CONTRIBUTORS
Up to \$99
David G. Arrigoni
Richard J. Borsicki
Michael A. Breda
Kathleen Roman Davis
Nancy Winkler Droscher
Cynthia Fedy Evans
Ronald J. Grosse

CONTRIBUTORS
Up to \$99
David G. Arrigoni
Richard J. Borsicki
Michael A. Breda
Kathleen Roman Davis
Nancy Winkler Droscher
Cynthia Fedy Evans
Ronald J. Grosse

CONTRIBUTORS
Up to \$99
David G. Arrigoni
Richard J. Borsicki
Michael A. Breda
Kathleen Roman Davis
Nancy Winkler Droscher
Cynthia Fedy Evans
Ronald J. Grosse

CONTRIBUTORS
Up to \$99
David G. Arrigoni
Richard J. Borsicki
Michael A. Breda
Kathleen Roman Davis
Nancy Winkler Droscher
Cynthia Fedy Evans
Ronald J. Grosse

CONTRIBUTORS
Up to \$99
David G. Arrigoni
Richard J. Borsicki
Michael A. Breda
Kathleen Roman Davis
Nancy Winkler Droscher
Cynthia Fedy Evans
Ronald J. Grosse

CONTRIBUTORS
Up to \$99
David G. Arrigoni
Richard J. Borsicki
Michael A. Breda
Kathleen Roman Davis
Nancy Winkler Droscher
Cynthia Fedy Evans
Ronald J. Grosse

CLASS OF 1981

The John Wilkes Society
FOUNDER'S CIRCLE
\$5,000 - \$9,999
William R. Miller

The Eugene Farley Club
GOLD CIRCLE

\$500 - \$999
Roger J. Davis
William A. Shaw
Edward J. White III

BLUE CIRCLE
\$250 - \$499
Michael W. Chaszak
James L. Dewdney
Andrew N. Janquinio
Patricia L. Warski
Shepard C. Willner

FARLEY ASSOCIATES
\$100 - \$249
Barbara C. Agurkis
Steven L. Bailey
Renee Venarucci Benedetto
Karen Lucchesi Bestrom
Donald E. Horvov
David F. Hungarter, Jr.
Nancy Jane Johnson
Carol Corbett Pawlisch
Thomas P. Sokola

CONTRIBUTORS
Up to \$99
Michael J. Briel
Lisa Cando Chilson
Lawrence J. Mullen
Mary McInale Schall
Patricia DeMko Sweeney

CONTRIBUTORS
Up to \$99
David G. Arrigoni
Richard J. Borsicki
Michael A. Breda
Kathleen Roman Davis
Nancy Winkler Droscher
Cynthia Fedy Evans
Ronald J. Grosse

CONTRIBUTORS
Up to \$99
David G. Arrigoni
Richard J. Borsicki
Michael A. Breda
Kathleen Roman Davis
Nancy Winkler Droscher
Cynthia Fedy Evans
Ronald J. Grosse

CONTRIBUTORS
Up to \$99
David G. Arrigoni
Richard J. Borsicki
Michael A. Breda
Kathleen Roman Davis
Nancy Winkler Droscher
Cynthia Fedy Evans
Ronald J. Grosse

CONTRIBUTORS
Up to \$99
David G. Arrigoni
Richard J. Borsicki
Michael A. Breda
Kathleen Roman Davis
Nancy Winkler Droscher
Cynthia Fedy Evans
Ronald J. Grosse

CONTRIBUTORS
Up to \$99
David G. Arrigoni
Richard J. Borsicki
Michael A. Breda
Kathleen Roman Davis
Nancy Winkler Droscher
Cynthia Fedy Evans
Ronald J. Grosse

BLUE CIRCLE
\$250 - \$499
Linda Wieraus Bohenek
Arden J. Keller, Jr.
Takehiko Serai

FARLEY ASSOCIATES
\$100 - \$249
Daniel R. Queen
Ronald David Rainey
Kathleen McGeary Umphred

CONTRIBUTORS
Up to \$99
Pats B. Alunni
Michelle Kondracki Balas
Ellena E. Colahan
Michael J. Dungan
Mae J. Grace
Ronald Alan Hartzell
Diana Whalley Kanner
Linda Kravitz Peltz
Mary L. Long
Rosalee D. Mancino
Gary H. Meyers
Janice A. Raspen
Kathleen Basley
Raymond R. Russ
David P. Saxton
Thomas L. Wintman

CLASS OF 1994

The Eugene Farley Club
GOLD CIRCLE
\$500 - \$999
Gina G. Taylor

CLASS OF 1993

The John Wilkes Society
JOBY WILKES ASSOCIATES
\$1,000 - \$2,499
Patricia Gryzka Blaziejewski

CLASS OF 1993

The Eugene Farley Club
GOLD CIRCLE
\$100 - \$249
Richard D. McHale
Melanie O'Donnell
Michelle

CLASS OF 1993

The Eugene Farley Club
GOLD CIRCLE
\$100 - \$249
Richard D. McHale
Melanie O'Donnell
Michelle

CLASS OF 1993

The Eugene Farley Club
GOLD CIRCLE
\$100 - \$249
Richard D. McHale
Melanie O'Donnell
Michelle

CLASS OF 1993

The Eugene Farley Club
GOLD CIRCLE
\$100 - \$249
Richard D. McHale
Melanie O'Donnell
Michelle

CLASS OF 1993

The Eugene Farley Club
GOLD CIRCLE
\$100 - \$249
Richard D. McHale
Melanie O'Donnell
Michelle

CLASS OF 1993

The Eugene Farley Club
GOLD CIRCLE
\$100 - \$249
Richard D. McHale
Melanie O'Donnell
Michelle

Rebecca Shedlock McCaffrey
Ronald N. Miller
Sally Pancheri
Benito A. Tranguich, Jr.
William J. Umphred, Jr.

CONTRIBUTORS
Up to \$99
Nancy Neary Baird
Angela L. Basta
Holly Pitcavage Frederick
Andrew Gulden
Gail Watson Haas
Christine Hooper-Ostroski
Elizabeth A. Knizer
Dave Joseph Kuranovich
Joseph C. Reilly
Lori Kuhar Marshall
Michelle Dickinson McNichols
Frank C. Mitchell
Patricia A. Royer
Michael J. Rymar
Sylvia C. Simmons
Sandra A. VanLuvender

CLASS OF 1995

The Eugene Farley Club
GOLD CIRCLE
\$500 - \$999
Susan J. Malkemes
Thomas J. McWilliams

CLASS OF 1995

The Eugene Farley Club
GOLD CIRCLE
\$500 - \$999
Susan J. Malkemes
Thomas J. McWilliams

CLASS OF 1995

The Eugene Farley Club
GOLD CIRCLE
\$500 - \$999
Susan J. Malkemes
Thomas J. McWilliams

CLASS OF 1995

The Eugene Farley Club
GOLD CIRCLE
\$500 - \$999
Susan J. Malkemes
Thomas J. McWilliams

CLASS OF 1995

The Eugene Farley Club
GOLD CIRCLE
\$500 - \$999
Susan J. Malkemes
Thomas J. McWilliams

CLASS OF 1995

The Eugene Farley Club
GOLD CIRCLE
\$500 - \$999
Susan J. Malkemes
Thomas J. McWilliams

CLASS OF 1995

The Eugene Farley Club
GOLD CIRCLE
\$500 - \$999
Susan J. Malkemes
Thomas J. McWilliams

CLASS OF 1995

The Eugene Farley Club
GOLD CIRCLE
\$500 - \$999
Susan J. Malkemes
Thomas J. McWilliams

CLASS OF 1995

The Eugene Farley Club
GOLD CIRCLE
\$500 - \$999
Susan J. Malkemes
Thomas J. McWilliams

Tina M. Oechler-Dean
Christopher M. Scarba
Suzanne Stanski Scheible
Tama L. Schmidt
Bernard J. Skalla
George W. Snyder
Dave Unzicker
Michele Forese Welliver
Katherine J. Genovese

CONTRIBUTORS
Up to \$99
Garth L. Allred
Mark D. Bradshaw
Kimberly B. Carr
Stephen W. Hansen
Kimberly Woods Hawk
Chad A. Heffner
Michael Kent
Brian W. McCoy
Andita Parker-Lloyd
Ali E. Qureshi

CLASS OF 1997

The Eugene Farley Club
GOLD CIRCLE
\$500 - \$999
Karen Ann Eplhin

CLASS OF 1997

The Eugene Farley Club
GOLD CIRCLE
\$500 - \$999
Karen Ann Eplhin

CLASS OF 1997

The Eugene Farley Club
GOLD CIRCLE
\$500 - \$999
Karen Ann Eplhin

CLASS OF 1997

The Eugene Farley Club
GOLD CIRCLE
\$500 - \$999
Karen Ann Eplhin

CLASS OF 1997

The Eugene Farley Club
GOLD CIRCLE
\$500 - \$999
Karen Ann Eplhin

CLASS OF 1997

The Eugene Farley Club
GOLD CIRCLE
\$500 - \$999
Karen Ann Eplhin

CLASS OF 1997

The Eugene Farley Club
GOLD CIRCLE
\$500 - \$999
Karen Ann Eplhin

CLASS OF 1997

The Eugene Farley Club
GOLD CIRCLE
\$500 - \$999
Karen Ann Eplhin

CLASS OF 1997

The Eugene Farley Club
GOLD CIRCLE
\$500 - \$999
Karen Ann Eplhin

FARLEY ASSOCIATES
\$100 - \$249
Hisham A. Abu-Nabaa
Vani P. Murthy
Tummy Swartwood Noonce

CONTRIBUTORS
Up to \$99
Chad A. Heffner
Michael Kent
Brian W. McCoy
Andita Parker-Lloyd
Ali E. Qureshi

CLASS OF 1997

The Eugene Farley Club
GOLD CIRCLE
\$500 - \$999
Karen Ann Eplhin

CLASS OF 1997

The Eugene Farley Club
GOLD CIRCLE
\$500 - \$999
Karen Ann Eplhin

CLASS OF 1997

The Eugene Farley Club
GOLD CIRCLE
\$500 - \$999
Karen Ann Eplhin

CLASS OF 1997

The Eugene Farley Club
GOLD CIRCLE
\$500 - \$999
Karen Ann Eplhin

CLASS OF 1997

The Eugene Farley Club
GOLD CIRCLE
\$500 - \$999
Karen Ann Eplhin

CLASS OF 1997

The Eugene Farley Club
GOLD CIRCLE
\$500 - \$999
Karen Ann Eplhin

CLASS OF 1997

The Eugene Farley Club
GOLD CIRCLE
\$500 - \$999
Karen Ann Eplhin

CLASS OF 1997

The Eugene Farley Club
GOLD CIRCLE
\$500 - \$999
Karen Ann Eplhin

CLASS OF 1997

The Eugene Farley Club
GOLD CIRCLE
\$500 - \$999
Karen Ann Eplhin

BLUE CIRCLE
\$250 - \$499
Patricia Cannon

FARLEY ASSOCIATES
\$100 - \$249
Michael N. Barrouk
Amy Beardsworth Costello
Christine Tondrick Seitzinger
Judith Tobin Telechowski
Melissa Ann Wall

CONTRIBUTORS
Up to \$99
Elizabeth Buckland-Kinney
David H. Clancy
James R. Domzalski
Paul W. Downton
Deborah Andres Greco
Karen L. Gunton
Curtis A. Kroesen
Toni Ann Steinson
Jill Fasciana McCoy
Lori Ann Perch
Melinda Nobles Prisco
Denise Collie
Phillip James Torres
Jennifer S. Webb

CLASS OF 1999

The Eugene Farley Club
GOLD CIRCLE
\$500 - \$999
Jennifer S. Webb

CLASS OF 1999

The Eugene Farley Club
GOLD CIRCLE
\$500 - \$999
Jennifer S. Webb

CLASS OF 1999

The Eugene Farley Club
GOLD CIRCLE
\$500 - \$999
Jennifer S. Webb

CLASS OF 1999

The Eugene Farley Club
GOLD CIRCLE
\$500 - \$999
Jennifer S. Webb

CLASS OF 1999

The Eugene Farley Club
GOLD CIRCLE
\$500 - \$999
Jennifer S. Webb

CLASS OF 1999

The Eugene Farley Club
GOLD CIRCLE
\$500 - \$999
Jennifer S. Webb

CLASS OF 1999

The Eugene Farley Club
GOLD CIRCLE
\$500 - \$999
Jennifer S. Webb

CLASS OF 1999

The Eugene Farley Club
GOLD CIRCLE
\$500 - \$999
Jennifer S. Webb

CLASS OF 2000

The Eugene Farley Club
GOLD CIRCLE
\$500 - \$999
Charlotte M. Puglia

CLASS OF 2000

The Eugene Farley Club
GOLD CIRCLE
\$500 - \$999
Charlotte M. Puglia

CLASS OF 2000

The Eugene Farley Club
GOLD CIRCLE
\$500 - \$999
Charlotte M. Puglia

CLASS OF 2000

The Eugene Farley Club
GOLD CIRCLE
\$500 - \$999
Charlotte M. Puglia

CLASS OF 2000

The Eugene Farley Club
GOLD CIRCLE
\$500 - \$999
Charlotte M. Puglia

CLASS OF 2000

The Eugene Farley Club
GOLD CIRCLE
\$500 - \$999
Charlotte M. Puglia

CLASS OF 2000

The Eugene Farley Club
GOLD CIRCLE
\$500 - \$999
Charlotte M. Puglia

CLASS OF 2000

The Eugene Farley Club
GOLD CIRCLE
\$500 - \$999
Charlotte M. Puglia

CLASS OF 2000

The Eugene Farley Club
GOLD CIRCLE
\$500 - \$999
Charlotte M. Puglia

CLASS OF 2000

The Eugene Farley Club
GOLD CIRCLE
\$500 - \$999
Charlotte M. Puglia

CLASS OF 2000

The Eugene Farley Club
GOLD CIRCLE
\$500 - \$999
Charlotte M. Puglia

Steven D. Redding
Bruce J. Sabatini
Sarah Keisling Snyder
Maureen Morto Wascavage

CLASS OF 2000

The Eugene Farley Club
GOLD CIRCLE
\$500 - \$999
Charlotte M. Puglia

CLASS OF 2000

The Eugene Farley Club
GOLD CIRCLE
\$500 - \$999
Charlotte M. Puglia

CLASS OF 2000

The Eugene Farley Club
GOLD CIRCLE
\$500 - \$999
Charlotte M. Puglia

CLASS OF 2000

The Eugene Farley Club
GOLD CIRCLE
\$500 - \$999
Charlotte M. Puglia

CLASS OF 2000

The Eugene Farley Club
GOLD CIRCLE
\$500 - \$999
Charlotte M. Puglia

CLASS OF 2000

The Eugene Farley Club
GOLD CIRCLE
\$500 - \$999
Charlotte M. Puglia

CLASS OF 2000

The Eugene Farley Club
GOLD CIRCLE
\$500 - \$999
Charlotte M. Puglia

CLASS OF 2000

The Eugene Farley Club
GOLD CIRCLE
\$500 - \$999
Charlotte M. Puglia

CLASS OF 2000

The Eugene Farley Club
GOLD CIRCLE
\$500 - \$999
Charlotte M. Puglia

CLASS OF 2000

The Eugene Farley Club
GOLD CIRCLE
\$500 - \$999
Charlotte M. Puglia

Shanna Lee Dawson
Kimberly A. Hruzak Ference
William J. Layo
Stacy L. Geiger Mesics
Maria Shahda Minielly
Stephanie Follmer Pastewait
Lisa Rink
Marisa Nebesky Todd
Ann L. Worring

CONTRIBUTORS
Up to \$99
Raymond J. Bernardi
Derek B. Bleiler
Kara Chapple
Ted D. Foust
Marcy L. Krill
Scott E. Herb
David M. Hinkle
Justin Holmes
William D. Host
Douglas M. Iracki
Brian R. Judge
Michael S. McMyrnie
Robert M. Moore
Jeffrey S. Nietz
Karen Novicki
Lisa Marie Ruggiero
Joyce A. Sorrentino
Jason Waterbury

CLASS OF 2002

The Eugene Farley Club
BLUE CIRCLE
\$250 - \$499
J. Bartholomay Grier

CLASS OF 2002

The Eugene Farley Club
BLUE CIRCLE
\$250 - \$499
J. Bartholomay Grier

CLASS OF 2002

The Eugene Farley Club
BLUE CIRCLE
\$250 - \$499
J. Bartholomay Grier

CLASS OF 2002

The Eugene Farley Club
BLUE CIRCLE
\$250 - \$499
J. Bartholomay Grier

CLASS OF 2002

The Eugene Farley Club
BLUE CIRCLE
\$250 - \$499
J. Bartholomay Grier

CLASS OF 2002

The Eugene Farley Club
BLUE CIRCLE
\$250 - \$499
J. Bartholomay Grier

CLASS OF 2002

The Eugene Farley Club
BLUE CIRCLE
\$250 - \$499
J. Bartholomay Grier

CLASS OF 2002

The Eugene Farley Club
BLUE CIRCLE
\$250 - \$499
J. Bartholomay Grier

CLASS OF 2002

The Eugene Farley Club
BLUE CIRCLE
\$250 - \$499
J. Bartholomay Grier

Denise A. Gerber
John P. Hawthorne
Kariann Iskra
JoAnn Kristofic
Brian Lee
Theresa McDermott
Sandra J. Mullen
Erin T. Priestman
Marissa Rovnack McCormick
Connie M. Ryan
Gregory A. Wojnar
Colleen Yacovelli

CLASS OF 2003

The Eugene Farley Club
FARLEY ASSOCIATES
\$100 - \$249
Robert J. Klepadlo
James L. McCarthy
Jeffrey B. Olson
Matthew M. Zurn

CLASS OF 2003

The Eugene Farley Club
FARLEY ASSOCIATES
\$100 - \$249
Robert J. Klepadlo
James L. McCarthy
Jeffrey B. Olson
Matthew M. Zurn

CLASS OF 2003

The Eugene Farley Club
FARLEY ASSOCIATES
\$100 - \$249
Robert J. Klepadlo
James L. McCarthy
Jeffrey B. Olson
Matthew M. Zurn

CLASS OF 2003

The Eugene Farley Club
FARLEY ASSOCIATES
\$100 - \$249
Robert J. Klepadlo
James L. McCarthy
Jeffrey B. Olson
Matthew M. Zurn

CLASS OF 2003

The Eugene Farley Club
FARLEY ASSOCIATES
\$100 - \$249
Robert J. Klepadlo
James L. McCarthy
Jeffrey B. Olson
Matthew M. Zurn

CLASS OF 2003

The Eugene Farley Club
FARLEY ASSOCIATES
\$100 - \$249
Robert J. Klepadlo
James L. McCarthy
Jeffrey B. Olson
Matthew M. Zurn

CLASS OF 2003

The Eugene Farley Club
FARLEY ASSOCIATES
\$100 - \$249
Robert J. Klepadlo
James L. McCarthy
Jeffrey B. Olson
Matthew M. Zurn

CLASS OF 2003

The Eugene Farley Club
FARLEY ASSOCIATES
\$100 - \$249
Robert J. Klepadlo
James L. McCarthy
Jeffrey B. Olson
Matthew M. Zurn

CLASS OF 2003

The Eugene Farley Club
FARLEY ASSOCIATES
\$100 - \$249
Robert J. Klepadlo
James L. McCarthy
Jeffrey B. Olson
Matthew M. Zurn

CLASS OF 2003

The Eugene Farley Club
FARLEY ASSOCIATES
\$100 - \$249
Robert J. Klepadlo
James L. McCarthy
Jeffrey B. Olson
Matthew M. Zurn

Julia Gordon Wojnar
Kenneth G. Huelbig
Mark D. Hulme
Sheryl A. Hupczey
Matthew Kulp
Jamie J. Markovchick
Melissa A. Mauro
Melissa Mecca
Lindsay A. Shaffer
Lisa M. Simons
Joseph J. Stein
Julia Afana Talukder
David J. Theisen
John J. Zelena

CONTRIBUTORS
Up to \$99
Mark Angelo
Paul S. Bitous, Jr.
Charles R. Bomboy, Jr.
Casey Connell
Brian J. Fritts
Kyle P. Gallagher
Bridget E. Giunta
Denise M. Granoski
Joshua Kloss
Renee A. Kott
Brittany N. Kramer
Michelle L. Krapf
Melissa A. Maybe
Andrew S. Moyer
Carlos E. Preano
Jodi L. Visconti
Sherry L. Weitz
Kimberly A. Whipple

CLASS OF 2005

The Eugene Farley Club
FARLEY ASSOCIATES
\$100 - \$249
Richard E. Albrecht
Kimberly Bochicchio
Katherine M. Green
Derek J. Sheruda

CLASS OF 2005

The Eugene Farley Club
FARLEY ASSOCIATES
\$100 - \$249
Richard E. Albrecht
Kimberly Bochicchio
Katherine M. Green
Derek J. Sheruda

CLASS OF 2005

The Eugene Farley Club
FARLEY ASSOCIATES
\$100 - \$249
Richard E. Albrecht
Kimberly Bochicchio
Katherine M. Green
Derek J. Sheruda

CLASS OF 2005

The Eugene Farley Club
FARLEY ASSOCIATES
\$100 - \$249
Richard E. Albrecht
Kimberly Bochicchio
Katherine M. Green
Derek J. Sheruda

CLASS OF 2005

The Eugene Farley Club
FARLEY ASSOCIATES
\$100 - \$249
Richard E. Albrecht
Kimberly Bochicchio
Katherine M. Green
Derek J. Sheruda

CLASS OF 2005

The Eugene Farley Club
FARLEY ASSOCIATES
\$100 - \$249
Richard E. Albrecht
Kimberly Bochicchio
Katherine M. Green
Derek J. Sheruda

CLASS OF 2005

The Eugene Farley Club
FARLEY ASSOCIATES
\$100 - \$249
Richard E. Albrecht
Kimberly Bochicchio
Katherine M. Green
Derek J. Sheruda

CLASS OF 2005

The Eugene Farley Club
FARLEY ASSOCIATES
\$100 - \$249
Richard E. Albrecht
Kimberly Bochicchio
Katherine M. Green
Derek J. Sheruda

CLASS OF 2005

The Eugene Farley Club
FARLEY ASSOCIATES
\$100 - \$249
Richard E. Albrecht
Kimberly Bochicchio
Katherine M. Green
Derek J. Sheruda

Gordon S. Smoko
Daniel E. Williams
Cathleen A. Zanghi

CONTRIBUTORS
Up to \$99
Mark Angelo
Paul S. Bitous, Jr.
Charles R. Bomboy, Jr.
Casey Connell
Brian J. Fritts
Kyle P. Gallagher
Bridget E. Giunta
Denise M. Granoski
Joshua Kloss
Renee A. Kott
Brittany N. Kramer
Michelle L. Krapf
Melissa A. Maybe
Andrew S. Moyer
Carlos E. Preano
Jodi L. Visconti
Sherry L. Weitz
Kimberly A. Whipple

CLASS OF 2005

The Eugene Farley Club
FARLEY ASSOCIATES
\$100 - \$249
Richard E. Albrecht
Kimberly Bochicchio
Katherine M. Green
Derek J. Sheruda

CLASS OF 2005

The Eugene Farley Club
FARLEY ASSOCIATES
\$100 - \$249
Richard E. Albrecht
Kimberly Bochicchio
Katherine M. Green
Derek J. Sheruda

CLASS OF 2005

The Eugene Farley Club
FARLEY ASSOCIATES
\$100 - \$249
Richard E. Albrecht
Kimberly Bochicchio
Katherine M. Green
Derek J. Sheruda

CLASS OF 2005

The Eugene Farley Club
FARLEY ASSOCIATES
\$100 - \$249
Richard E. Albrecht
Kimberly Bochicchio
Katherine M. Green
Derek J. Sheruda

CLASS OF 2005

The Eugene Farley Club
FARLEY ASSOCIATES
\$100 - \$249
Richard E. Albrecht
Kimberly Bochicchio
Katherine M. Green
Derek J. Sheruda

CLASS OF 2005

The Eugene Farley Club
FARLEY ASSOCIATES
\$100 - \$249
Richard E. Albrecht
Kimberly Bochicchio
Katherine M. Green
Derek J. Sheruda

CLASS OF 2005

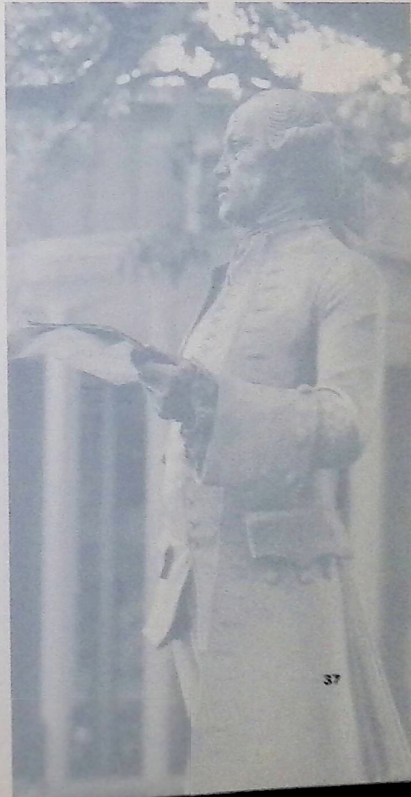
The Eugene Farley Club
FARLEY ASSOCIATES
\$100 - \$249
Richard E. Albrecht
Kimberly Bochicchio
Katherine M. Green
Derek J. Sheruda

CLASS OF 2005

The Eugene Farley Club
FARLEY ASSOCIATES
\$100 - \$249
Richard E. Albrecht
Kimberly Bochicchio
Katherine M. Green
Derek J. Sheruda

CLASS OF 2005

The Eugene Farley Club
FARLEY ASSOCIATES
\$100 - \$249
Richard E. Albrecht
Kimberly Bochicchio
Katherine M. Green
Derek J. Sheruda



SENIOR CLASS Gift 2006

Habitat for Humanity
Joseph L. Johnson
Sharon Miller
Andrew Johnson
Tiffany Stone (Widow)
Janet M. Kelly
James M. Babin
Robert G. Babin
Alana M. Babin
Melinda A. Babin
Stephanie R. Babin
Christopher G. Babin
Justin M. Babin
Scott A. Babin
David H. Babin
Jonathan W. Babin
Elizabeth W. Babin
Sarah K. Babin
Matthew J. Babin
Tyler William Babin
Bethany Marie Babin
Erica M. Babin
Alexis L. Babin
Matthew R. Babin
Mary-Catherine L. Babin
Wendy L. Babin
Carlos J. Babin
Kelly A. Babin
Gregory J. Babin
Patricia L. Babin
Janell M. Babin
Denise M. Babin
Tara M. Babin
Karen Lee Babin
Kelly M. Babin
Alicia S. Babin
Benjamin B. Babin
Kathryn A. Babin
Jason T. Babin
Nan F. Babin
Joseph A. Babin
Nicholas G. Babin
Marianne Babin
Matthew J. Babin
Nicholas J. Babin
James Dennis

Brian J. Dewey
David J. Dewey
Kelly Dewey
Brianna Dewey
William B. Dewey
Rachel A. Dewey
Joseph L. Dewey
Gregory C. Dewey
Michelle L. Dewey
Sean W. Dewey
Michelle J. Dewey
Michael J. Dewey
Tara E. Dewey
Stephanie Pajot
Emily M. Gervino
David Gold
Nicholas U. Goodman
Sam Marie Gray
Nicholas E. Grimes
Sarah N. Grimes
Lindsay Marie Hamu
William J. Harbster
William L. Harbster
Michael S. Harbster
Miranda E. Harbster
Sarah A. Harbster
Thomas J. Harbster
Cherianne C. Hollenback
David C. Holtman
Thomas P. Holtman
Pearl P. Holtman
Nicholas Hufford
Sandra Leigh Hughes
Mark S. Hunter
Brandon C. Ingraham
Nicole J. Ishida
Christopher J. Isler
Jennifer M. Iwanaszyn
Hazelab Azeala Jamin
Juan Carlos Jimenez
Matthew Faraday Jones
Ashley M. Joslin
Janilyn M. Jung
Kiran S. Kallin
Katie M. Kille
Andrea L. King

Catherine A. Klotz
April J. Kostick
Douglas S. Kraftack
Cheryl L. Kramer
Justin C. Lacomis
Wendy M. Lamparter
Joseph M. Lastovica
Michelle A. Layelle
Stephen W. Lehmkuhl
Wendy M. Long
Ann M. Leonard
Lauren L. Lettner
Daniel A. Leung
John Lowe
Frederick Luckenbaugh
Kristen E. Lunick
Thomas A. Luthy
Stacy L. Macri
Christopher S. Macumber
Matthew J. Madals
Cassandra R. Malone
William J. Marbster
William L. Harbster
Michael S. Harbster
Miranda E. Harbster
Sarah A. Harbster
Thomas J. Harbster
Cherianne C. Hollenback
David C. Holtman
Thomas P. Holtman
Pearl P. Holtman
Nicholas Hufford
Sandra Leigh Hughes
Mark S. Hunter
Brandon C. Ingraham
Nicole J. Ishida
Christopher J. Isler
Jennifer M. Iwanaszyn
Hazelab Azeala Jamin
Juan Carlos Jimenez
Matthew Faraday Jones
Ashley M. Joslin
Janilyn M. Jung
Kiran S. Kallin
Katie M. Kille
Andrea L. King

Michael J. Pedley
Kristen L. Pegarella
Renee A. Peters
Richard J. Peterson
Eli Phillips, Jr.
Tamara Phillips
Lauren Y. Pluskey
Adrianna J. Polednak
Duran N. Porrino
Christopher E. Pray
Jennifer L. Prell
Jason T. Price
Joseph W. Price
Laurien S. Rabadi
Jennifer M. Ramil
Cody A. Raspen
Katherine R. Ravnikar
Nichole L. Redmond
Stephanie A. Rodano
Todd M. Ronco
Erin E. Rovinsky
Hugh Michael Ruger
Myles Rumbel
Kaly Ashley Rupert
Elizabeth C. Sabatini
Melanie L. Sarno
Jamil M. Mason
James Michael Mason
Ashley M. McBrearty
Sean K. McCarthy
Christopher J. Mead
Jared J. Meckler
Jennifer M. Menendez
Megan M. Meyers
Jeneive E. Michalek
Deana Mikhailova
Brian T. Moran
Sara E. Moskaluk
Arvin P. Narala
Samantha C. Naugle
Jan E. Nunemacher
Jill Nunemacher
Megan J. O'Brien
Kathleen A. O'Hara
Cory R. Ogden
Lami L. Shuleski
Joseph E. Stedlecki
Benjamin J. Palachnick
Christopher J. Partyska
Ryan M. Pectakonis

Ian M. Spaulding
Ashleigh Marie Stewart
Michelle A. Strand
Brian B. Strazdus
Dara H. Sulla
Nina L. Sweppenheiser
Diana Rae Szymanski
Gina M. Tempesta
Kate V. Thomas
Tristin D. Tkach
Sara A. Toole
Tracy L. Tracy
Jennifer A. Trate
Michelle L. Trudnak
John R. Untisz
Thomas D. Van Why
Zachary T. Vaskalis
Christine Marie Wagner
Matthew E. Wayman
Amanda L. White
Victoria M. White
Holly L. Whiter
James R. Wilce
Kristy Lee Wilcox
Brad L. Williams
Erin L. Williams
Jolene M. Williams
Nicole E. Witek
Amanda Marie Wojcik
Eric J. Wolfgang
Jamie Wood
Jillian M. Wydra
Christopher J. Yonki
Michelle Ann Young
Charles R. Yurkon
Joseph M. Yurko
Matthew G. Zebrowski
Nicholas P. Ziminski
Nicole Zimmerman
Aunt M. Zern

Anonymous
Anonymous
George Aiden Trust
Estate of Agnes C. Alderdice '58
Barbara Zatzoff Allan
Estelle B. Andrews '69
Anthony J. Bartuska
Dons Gorka Bartuska, M.D. '49
George Bierly '40
Betty Kanarr Bierly '50
Charles S. Butler '59
Estate of Catherine H. Bone
Lee and Louise Brown Trust
Dr. Mary E. Brown '62
Richard G. Cantner '68
Bruce R. Cardon Trust
Estate of Donald F. & Louise C. Carpenter
Dr. Jesse H. Choper '57
Estate of Thomas J. Coburn '49
William L. Conyngham
Fleanor Kazmercyk
Cornwell '53
Colonel William Corbett
Harold Cox, Ph.D.
Samuel M. Davenport, III '59
Estate of Fred H. Davies
Stanley and Patricia S. Davies
Thomas J. Deitz
Estate of Charles and Sadie Donin
Estate of Isadore and Getha Edelstein
Estate of R. Carl Ernst '58
Josephine Eustice
Annette Evans Trust
Rulison Evans Trust
Estate of Attorney & Mrs. George L. Fenner, Jr.
The Honorable J. Harold Flannery '55
Barbara Flannery
Walter R. Fleet
Shirley Rees Fleet '49
Stephen L. Flood '66
Dr. Don C. Follmer '50

THE Marts Society

Alumni, friends and benefactors have played a sustaining role in the future of Wilkes University and its students through bequests and other charitable estate plans. The Marts Society recognizes the increasing number of contributors participating in gift planning programs that benefits the university.

University Junior College in Wilkes-Barre during the Depression. Because he believed in the service offered to the young people of the Wyoming Valley, Dr. Marts provided the support and leadership the fledgling institution needed to become self-sustaining. Dr. Marts established a trust in 1964, which provided a lifetime income for Mrs. Marts after his death. Upon her death in 1994, more than \$2 million was gifted to the university, which helped make possible the addition of the Arnaud C. Marts Sports and Conference Center.

Membership in the Marts Society is attained through the commitment of any number of planned gifts, including bequests, charitable trusts, gift annuities, gifts of property with retained life estate, life insurance policies and retirement plan accounts. Many of these gift vehicles allow donors to contribute cash or appreciated assets to benefit Wilkes while earning income during their lifetime.

For more information on becoming a member of the Marts Society, please contact the Planned Giving Office at 570-408-4309 or 1-800-WILKES-U, ext. 4309 or visit our Web site at www.wilkes.edu/pages/715.asp and explore the benefits of a planned gift through our new interactive planned giving calculator.

The Marts Society was named in honor of Dr. Arnaud C. and Anne McCartney Marts. Dr. Marts became president of Bucknell University in 1935 and was instrumental in maintaining Bucknell

Estate of Dorothy R. Morgan
Estate of Jesse L. Morgan
Paul D. Morgis '70
Regina L. Morse '82
Estate of Herbert J. Morris
Estate of J. Donald Munson
Estate of Wilbur A. Myers
Martin J. Naparstek '69
Barbara W. Nixon '71
Estate of William P. Orr, III
Geraldine Nesbitt Orr
Estate of Alberta A. Ostrander
Richard L. Pearsall
Lawrence B. Pelesh '50
F. Charles Potrillo, Esquire '66
Dr. and Mrs. Cummings A. Platt
Henry B. and Edith M. Plumb Trust
Amy D. Plutino '97
Estate of Frieda Pogoreloff

Estate of Roy H. Pollack
William H. Rice '48
Arnold and Sandy Rifkin
Harry W. Rinchimer '43
Estate of Harriet P. Ripley
Gordon E. Roberts '60
Dr. Jessie A. Roderick '56
Attorney Harold Rosenn
Mrs. Sallyanne Rosenn '42
Estate of Rae Roth
Donald J. Sackrider
Mr. and Mrs. Louis Santoro '83
Janice A. Saunders '70
Joseph J. Savitz, Esquire '48
Marian R. Schaeffer Trust
Nathan Schiowitz Trust
Marvin and Stella Schub
Daniel Sherman '50
Estate of Frances D. Showell
Dr. George J. Siles '57

Dr. Herbert B. Simon
Estate of Margaret Mary Sites
Estate of Gordon A. Smith
Nancy Hancock Smith
Andrew F. Sofranko, Jr. '68
Joseph Sooby, Jr. '49
Dr. Charles A. Sorber '59
Linda E. Sorber
Dr. Albert J. Stratton '49
Dr. Lester J. Turoczi
Constance McCole Umphred
Estate of Edward A. Venzel '54
Estate of Walter E. Vorleski
Estate of Ann Brennan Wagner
Estate of Esther Weckesser Walker
Bruce R. Williams, D.O. '82
Estate of John F. Wozniak '61
Estate of William H. Young
Emery and Mame Ziegler Trust

ENDOWED & ANNUAL Scholarships

Below is the current list of endowed and annual scholarships available to Wilkes students. Please go to www.wilkes.edu/pages/358.asp for descriptions on these scholarships or for more information on how to establish a scholarship.

ENDOWED NAMED SCHOLARSHIPS

Mohamad Abraham Scholarship
 Vincent and Martha Aleo Scholarship
 Alumni Association Scholarship
 David Avers Scholarship Fund
 Ballet Society of Wyoming Valley Scholarship
 Kevin Edward Barker Memorial Scholarship
 Grant H. Earlow Memorial Scholarship
 Dr. Alfred W. Bastress Scholarship
 Ethel G. and Alvan E. Baum Scholarship
 George Thompson and Sara Wolfe Bell Scholarship
 Frederic E. Bellas Endowed Scholarship
 Samuel Berk Memorial Scholarship
 William Bernhard Scholarship
 William D. Berryman Scholarship Fund
 Michael J. Beggan, III Scholarship
 Rose Brader Scholarship
 Christopher N. and Jane M. Breiseth Scholarship
 Joyce Porter and Norton Millard Breiseth Scholarship
 Genevieve Todd Brennan Memorial Scholarship
 Charles N. Burns, Sr., M.D. '35 Scholarship
 Robert S. Capin Scholarship in Accounting
 Bruce R. Cardon and Charlotte J. Cardon Memorial Scholarship
 Walter S. Carpenter Scholarship in Engineering
 J. Blanchard Carr and Hildegard Finger Carr Scholarship
 John J. Czwalek, Sr. Scholarship
 Class of 1970 Scholarship
 Alumni and Friends of Communications Scholarship
 Conyngham Post No. 97, Grand Army of the Republic,
 Department of Pennsylvania, Scholarship
 Elena Lucretia Corran's Scholarship
 Alfred Franklin D'Anca, M.D. Scholarship
 Dr. and Mrs. S. M. Davenport Scholarship
 Esther and William Davidowitz Scholarship
 Anthony J. DiMichele Memorial Scholarship
 Seymour A. Diamond Scholarship
 Charles and Sadie Domin Memorial Scholarship
 George F. Elliot Memorial Scholarship

Sylvia Dworski, Ph.D. Scholarship
 Isadore and Getha Edelstein Scholarship
 Dr. John Henry Ellis, IV Scholarship
 Mahmoud H. Fahmy, Ph.D. Scholarship
 John Faneck '50 Scholarship Fund
 Eugene S. and Eleanor Coates Farley Scholarship
 David R. Fendrick Scholarship
 Chlora Fey Scholarship
 Harry and Gloria Farkas Fierwerker Scholarship
 David J. Findora '70 Memorial Scholarship
 Stephen L. Flood '66 Scholarship
 Muriel S. Follmer Scholarship
 Sarah Catherine Ford Adult Learner Scholarship
 Fortinsky Scholarship
 Sidney and Pauline Friedman Scholarship
 Sandy A. Furey Memorial Scholarship
 Carlton H. Garinger Memorial Scholarship
 William R. Gasbarro Scholarship
 Mildred Gittins Memorial Scholarship
 Cathy Lynn Glatzel '86 Nursing Scholarship
 Elizabeth and Albert Grabarek Memorial Scholarship Fund
 Henry and Sylvia Greenwald Scholarship
 Brynly R. Griffiths Scholarship
 Margaret Mary Hagelgans Memorial Scholarship
 Edward G. Hartmann, Ph.D. '35 Scholarship
 George Hayes of Windsor Scholarship
 Patricia Boyle Heaman and Robert J. Heaman Scholarship
 William Randolph Hearst Endowed Scholarship
 Hugh G. & Edith Henderson Scholarship
 Klaus Holm Scholarship
 Arthur J. Hoover Scholarship
 Andrew J. Hourigan, Jr., Esq. Scholarship
 Sherry Every Hudick Memorial Scholarship
 Jewish War Veterans, Wilkes-Barre Post 212 Scholarship
 Harvey and Mildred Johnson Scholarship Fund
 William D. Jonathan Memorial Scholarship
 Dr. Dilys Martha Jones & Thomas Evan Jones Scholarship
 John D. Kearney Memorial Scholarship
 Grace C. Kimball Scholarship in Biology
 Harold J. Harris, M.D. - Angelina Elizabeth Kirby
 Memorial Health Center Scholarship
 Kaslas-Sheporaitis Educational Scholarship Fund
 Eugene T. Kolarz Scholarship
 Francis A. and Maryann V. Kopen Scholarship
 Korals Fashion Scholarship
 Esther Lamb Scholarship
 Jane Lampe-Groh Scholarship

William Langfelder Scholarship
 Letter Women's Club Scholarship
 LF Brands, Inc. Scholarship
 Anne Vanko Liva Scholarship
 Charlotte V. Lord Scholarship
 Kathryn H. MacAvoy Scholarship in Nursing
 Will E and Regina D. Maguire Scholarship
 Kathleen Harzell Mailander Scholarship in Nursing
 Anthony D. Marsico Scholarship Fund
 Arnaud Cartwright Mars Scholarship
 Frances and Louis Maslow Memorial Scholarship
 Robert J. McBride Memorial Scholarship
 McGowan Scholarship
 Ruth W. and John T. McHenry Scholarship in Nursing
 Mariyln McQuestion-Kay Memorial Scholarship
 Norris Church Matler Scholarship
 Ruth Boorum Melberger '62 Scholarship
 Elizabeth Sandish Montgomery and George Heron
 Montgomery Scholarship
 Thomas J. Moran Scholarship in Journalism
 Dr. Jaroslav G. Moravec Memorial Scholarship
 Mabel and John C. Mosteller Scholarship
 Sarah D. Moyer Memorial Scholarship
 Donald and Marion Munson Scholarship
 Dr. Umid R. Nejbij and Omar U. Nejbij '92 Memorial Scholarship
 Lee A. Namey '68 Scholarship
 Taft Achilles Rosenberg Naparsteck Scholarship
 O'Hop Family Scholarship
 Overlook Estate Foundation Scholarship
 Ellen Webster Palmer Scholarship
 Patel Scholarship
 Peking Chel Scholarship for International Understanding
 Pennsylvania Institute of Certified Public Accountants
 Northeast Chapter Scholarship
 Pennsylvania's Last Frontiersman Scholarship
 Craig C. Piatt Memorial Scholarship
 Henry Blackman Plumb and Edith Plumb Scholarship
 Frieda Pogoreloff Scholarship
 Roy H. Pollack Memorial Scholarship
 Kenneth L. Pollock Scholarship
 George and Helen Ralston Scholarship
 Charles B. Reif Scholarship for the Biological Sciences
 Lillian Wilkins Rinehimer R.N. Scholarship
 Dr. James Rodechko Scholarship in History
 Dr. Samuel A. Rosenberg Memorial Scholarship
 Sydney and Theodore Rosenberg Scholarship
 Lawrence W. Roth Memorial Scholarship
 Joseph H. Salsburg Scholarship
 Amedeo Obici and Thomas P. Sangiuliano Scholarship
 Dolores E. and Francis Sangiuliano Scholarship
 Mr. and Mrs. Thomas Paul Sangiuliano
 Abe and Sylvia Savitz Family Scholarship Fund
 Nathan Schiowitz Scholarship in Nursing
 Scholarship to Start Education (SSE)
 Robert Marc Schub Memorial Scholarship
 Louis Shaffer Memorial Scholarship
 Bruce and Bessie Shaw Scholarship

Frances D. Shotwell Memorial Scholarship
 Samuel H. Shotwell Memorial Scholarship
 Mark Slomowitz Memorial Scholarship
 Merritt W. and Marjory R. Sorber Scholarship
 Stanley E. and Helen Stawicki Memorial Scholarship
 Surdna Foundation Scholarship
 George F. and Ruth M. Swartwood Scholarship
 Cromwell E. and Beryl Thomas Outstanding Junior Scholarship
 Reed P. and Dorothy Travis Memorial Scholarship
 Dr. Norma Sangiuliano Tyburski Scholarship
 Dr. and Mrs. Stanley J. Tyburski Endowed Scholarship
 Francis A. Umphred Memorial Scholarship
 Dorothy G. and Edward A. Venzel '54 Memorial Scholarship
 Esther Weckesser Walker Scholarship
 Robert A. West Scholarship in Education
 Daniel S. Wilcox, Jr. Scholarships in Accounting
 Myvanwy Williams Theater Scholarship
 William H. and Ruth W. Young Scholarship
 Ira B. Zatzoff Memorial Scholarship
 Emery and Mamie Ziegler Scholarship

ANNUAL NAMED SCHOLARSHIPS

Mary E. Dougherty Memorial Scholarship
 Beverly Blakeslee Hiscox '58 Scholarship
 Intermetro Industries Scholarship
 David W. Kistler, M.D. Scholarship
 Charles Mattei, P.E. Scholarship Fund
 Olin Morris Scholarship Fund
 PA Society of Public Accountants, NE Chapter Scholarship
 Plains Rotary Scholarship in Memory of Leo Pensicri
 Polish Room Committee Scholarship
 A. Rifkin and Company Scholarship
 Sidhu School Outstanding Leaders Scholarship
 Louis Smith Scholarship Fund
 United Parcel Service Foundation Scholarship
 Wilkes-Barre Rotary Club Scholarship
 Wilkes University Faculty Women and Wives Club Scholarship
 Wyoming Valley Health Care System Medical Staff Annual Scholarship

FUTURE SCHOLARSHIPS

Agnes C. Alderdice '58 Scholarship
 Richard and Ellen Ayre Memorial Scholarship
 Louise Brown Scholarship
 Crahall Foundation Scholarship
 Hannah Marie Breemer Frantz Scholarship
 Honorable Jeffrey Gallet '64 Memorial Scholarship
 Jason and Tamara Griggs Scholarship
 Christopher Kopernik Scholarship Fund
 Clifford and Ruth Melberger '62 VPAD Scholarship
 KPMG/John R. Miller Scholarship
 Harry J. Moyler '58 Scholarship
 Theresa A. Nowinski-Leiter Scholarship
 Sallyanne and Harold Rosenn Scholarship Fund
 Joanne Raggi Scholarship
 William H. Rice '48 Scholarship
 Joseph J. Savitz, Esquire '48 Scholarship
 Elizabeth A. Slaughter, Ph.D. '68 Scholarship



The John Wilkes Society

- Dr. & Mrs. Paul S. Adams
- Agriculture Foundation
- Marcel/Mrs. John Agren
- Mr. & Mrs. Albert G. Alburn
- Attorney & Mrs. Stephen W. Albrecht
- Estimate/Valma C. Alford
- Mr. & Mrs. William A. Altman
- Dr. Jeffrey W. Arves
- Armed Corporation
- Dr. & Mrs. Tom A. Arvan
- Mr. & Mrs. Scott W. Assiter
- Association of Independent Colleges & University
- Center of Elder Arts
- Mr. Charles Baker
- William Spain Address & Impervul, LLP
- Mr. & Mrs. David A. Bailment
- Dr. Arno Baren
- Mr. & Mrs. William F. Balm
- Bergman Foundation
- Mr. & Mrs. William Bernhart III
- Mr. George W. Bercy
- Attorney Craig Blackley
- Mr. & Mrs. James Blazewski
- Blue Cross of Northeastern PA
- Elizabeth Foundation of Blue Cross NEPA
- Blum, Gynowski, Jackson
- Forten-Lawson Engineering
- Mr. & Mrs. Albert Boscor
- Dr. & Mrs. John P. Brady III
- Mr. & Mrs. Robert Brandt
- Bellevue Excavating, Inc.
- Brimson Electric, Inc.
- Mr. & Mrs. Richard L. Bunn
- Mr. & Mrs. Patrick J. Burke
- Mr. & Mrs. William Bush
- Mr. & Mrs. Scott A. Byers
- Attorney Timothy Cain
- Mr. & Mrs. Anthony Cardinali
- Estate of Bruce & Charlotte Cardon Trust
- Ms. Sandra Sarno Carroll
- Mr. & Mrs. Terrence Winston Casey
- Mr. & Mrs. John M. Cafaly, Jr.
- Mrs. Denise Schaal Casere

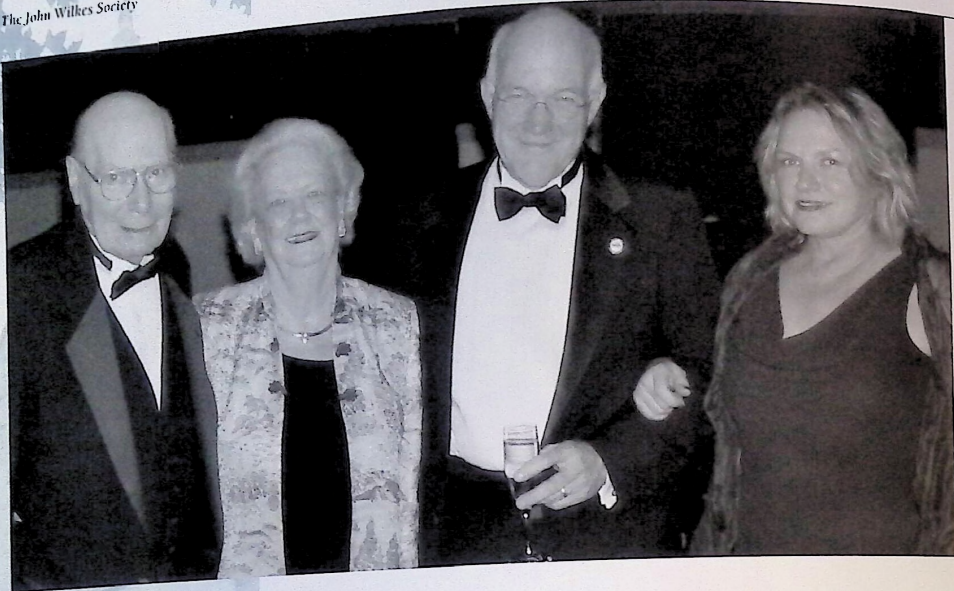
- Chamberlain Manufacturing Corp.
- Attorney Anne Champion
- Changeable Skys, LLC
- Mr. & Mrs. Donald E. Cherry
- Mr. & Mrs. John Chipego
- Mr. & Mrs. John J. Chopack
- Dr. Jesse H. Choper
- Citizens Charitable Foundation
- Cleveland Brothers Equipment Corp.
- Coca-Cola Bottling Corp.
- Attorney & Mrs. Steven Cohen
- Mr. & Mrs. Lawrence E. Cohen
- Attorney Harrison J. Cohen
- Mr. & Mrs. Douglas Colandrea
- Commonwealth Telephone Enterprises, Inc.
- Mr. & Mrs. Joseph Condron
- Mrs. Ann M. Coughlin
- The Coura Foundation
- Dr. Harold E. Cox
- Mr. & Dr. Brianley Crahall
- Crabell Family Foundation
- Mrs. Grace J. Kirby Culbertson
- Dr. Bonnie Culver
- CVS Charitable Trust, Inc.
- Mr. Alfredo E. Daniele
- Attorney David G. Dargatis
- Mr. Samuel M. Davenport
- Mr. & Mrs. William Davidowitz
- Mr. & Mrs. Stanley S. Davies
- Mr. David L. Davis
- Dr. Catherine De Angelis
- Mr. Thomas J. Deitz
- Captain & Mrs. Fred R. Demech, Jr.
- Alexander W. Dick Foundation
- Diversified Information Technologies, Inc.
- Mr. & Mrs. Raymond E. Dombroski
- Attorney & Mr. Stuart Donaldson
- Downtown Wilkes-Barre Touchdown Club
- Mr. & Mrs. Michael Dziak
- Estate of Isadore & Getha Edelstein Trust
- Mr. James P. Edwards
- Facility Design & Development LTD.
- Mr. Welton G. Farrar
- Dr. Darin E. Fields
- Follett College Stores
- Dr. Don C. Follmer
- Jack Follweiler's Garage
- Mr. & Mrs. Robert Fortinsky
- Mr. & Dr. Michael J. Frantz

- Mr. & Mrs. Sidney Friedman
- Attorney & Mrs. Brad Friedman
- Estate of Dr. William L. Gaines
- GAO Marbuck Foundation
- Dr. & Mrs. James Garofalo
- Mr. & Mrs. Michael Gavin
- Mr. & Mrs. Thomas M. Gehret
- Geisinger Wyoming Valley Medical Staff
- Attorney & Mrs. Richard Gelfond
- Attorney Susan Gellman & Mr. Jack Chomsky
- Mr. Jeffrey S. Giberson
- Dr. & Mrs. Joseph E. Gilmour
- Mr. & Mrs. William Gino
- Mr. & Mrs. Sheldon Goidell
- Mr. & Mrs. Alan Gold
- Golden Business Machines, Inc.
- Mr. & Mrs. Jerome R. Goldstein
- Mr. & Mrs. Michael I. Goutdenker
- Gould Evans Affiliates
- Dr. Bernard W. Graham
- Green Valley Landscaping Inc.
- Dr. & Mrs. David Greenwald
- Estate of Charlotte R. Gregory
- Estate of Brynly R. Griffiths Trust
- Mr. & Mrs. Jason D. Griggs
- Mr. & Mrs. Edward Grogan
- Mr. & Mrs. Alfred Groh
- Guard Foundation
- Guard Insurance Group
- Dr. Alan E. Guskin, Ph.D.
- Mr. Vladimir Hadsky
- Mr. & Mrs. William A. Hanbury
- Harkness Foundations for Dance
- Attorney James Harshaw
- Dr. Wilbur F. Hayes
- Ms. Louise S. Hazeltine, RN
- Mr. & Mrs. Nicholas A. Heineman
- Mr. & Mrs. Frank M. Henry
- Mr. & Mrs. Frederick Herrmann
- Dr. Edwin F. Hillinski
- Mr. & Mrs. Frederick J. Hills
- Mr. Michael J. Hirtler
- Hirtle Gallagher & Company
- Attorney & Mrs. Harry R. Hiscox
- Mr. & Mrs. Arnold M. Hoeflich
- Mr. & Mrs. Seymour Holtzman
- Mr. & Mrs. Terrence P. Horriagan
- Attorney Fordham E. Huffman
- Mr. & Mrs. Frank H. Hughes, Jr.

- Attorney & Mr. Paul Hunt
- Intermetro Industries Corp.
- Mr. Stuart A. Jed
- Mr. & Mrs. Edwin L. Johnson
- Mr. & Mrs. Leo R. Kane
- Mr. & Mrs. Clayton J. Karambelas
- Dr. Stanley Kay
- Mr. & Mrs. John P. Kearney
- Attorney Michelle Kenney
- Kingston High School Class of 1945
- Mr. Allan P. Kirby, Jr.
- Mr. Milan S. Kirby
- Mr. & Mrs. John S. Klimchak
- Attorney Diane F. Klotnia
- Mr. & Mrs. John Walter Kluchinski
- Mr. & Mrs. George Kolesar
- Mary R. Koons Charitable Trust
- Dr. & Mrs. Dan F. Koppen
- The Honorable Edwin M. Kosik
- Attorney Ronald Krauss
- Kronick Kalada Berdy & Co., PC
- Attorney Harold Kwalwasser
- Mr. Drew Landmesser
- Dr. Charles F. Laycock
- The Honorable Charles D. Lemmond, Jr.
- Dr. & Mrs. J. Michael Lennon
- The Lion Brewery, Inc.
- Lockheed Martin - Archbald, PA
- Attorney Jeffrey Lowenthal
- The Lubrizol Foundation
- Luzerne County Convention & Visitors Bureau
- Luzerne Foundation
- Luzerne National Bank
- M & T Bank
- M & T Charitable Foundation
- George Marquis MacDonald Foundation
- Attorney & Mrs. Paul William MacGregor
- Mr. & Mrs. Thomas J. Mack, Jr.
- Attorney Fred Magaziner
- Mr. & Mrs. Michael J. Mahoney
- Mark IV Industries Foundation, Inc.
- Mrs. Marjorie Marquart
- Attorney & Mr. Monte Marti
- Maslow Family Foundation, Inc.
- Mrs. Melanie Maslow Lumia
- Attorney & Mrs. Richard Matasar
- Mr. & Mrs. Kelly J. Mather
- Mr. & Mrs. George J. Matz
- McCole Foundation, Inc.
- Mr. & Mrs. Robert McFadden
- William G. McGowan Charitable Fund, Inc.
- Mr. & Mrs. Gerard A. McHale, Jr.
- Attorney K. Heather McRay
- Mr. & Mrs. Clifford K. Melberger
- Mr. & Mrs. Frank H. Menaker, Jr.
- Dr. & Mrs. Robert Mericle
- Drs. James & Nancy Merryman
- Ms. Melanie Mickelson
- Mr. & Mrs. Neil L. Millar
- Mr. John R. Miller
- Mr. William R. Miller

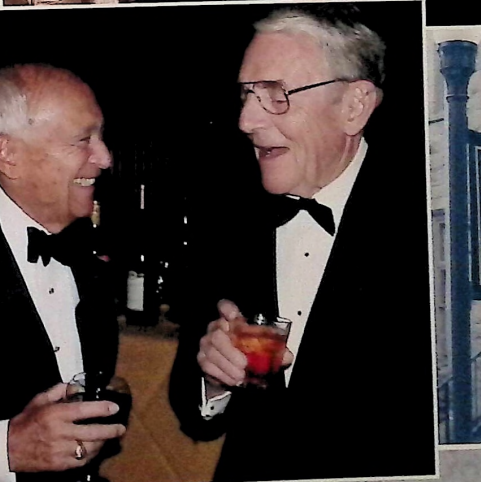
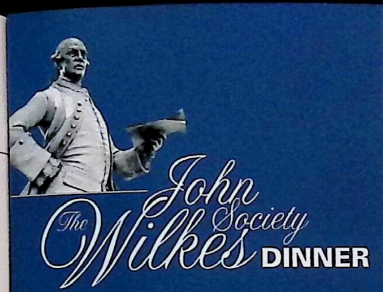
- Mr. & Mrs. Gerald A. Molfatt
- Mr. & Mrs. Jerry A. Mohr
- Attorney & Mrs. Norman Monhait
- Mr. & Mrs. William P. Montague, Jr.
- Dr. & Mrs. James J. Morgan
- Attorney Andrew J. Morris
- Estate of Mable & John C. Mosteller Trust
- Mr. & Mrs. Robert A. Mugford
- Mr. James J. Mulligan
- N.R.G. Controls North, Inc.
- NACDS - National Association Of Chain Drug Stores
- NE PA Paint & Decorating Contractors
- Mr. & Mrs. Joseph J. Neetz
- NEPA American Society Highway Engineers
- New Era Technologies, Inc.
- Ms. Anna Rusnak Noon
- PA Society of Public Accountants.
- NE Chapter (PSPA)
- Pa. Economy League Inc.
- Mr. Richard J. Pape
- Mr. & Mrs. Michael A. Paternoster
- Mr. & Mrs. Richard L. Pearsall
- Attorney & Mrs. William A. Perlmuth
- Mr. Peter W. Perog
- Pharmacists Mutual Insurance Company
- Dr. & Mrs. Cummings A. Piatt
- Attorney & Mrs. Arthur Piccone
- Plains Rotary Club
- Estate of H. B. & E. M. Plumb Trust
- Dr. William A. Plummer
- Polish Room Committee
- PP & L - Scranton, PA
- Attorney & Mrs. Jonathan S. Pressman
- Price Waterhouse Coopers
- Dr. & Mrs. George Ralston
- Mr. Thomas N. Ralston
- Dr. & Mrs. William F. Raub
- Mr. John G. Reese
- Mr. & Mrs. Charles M. Reilly
- Mr. & Mrs. Nicholas S. Reynolds
- Mrs. Mary B. Rhodes
- Mr. & Mrs. Jerry N. Rickrode
- Mr. & Mrs. Arnold S. Rifkin
- Dr. & Mrs. James Rodechko
- Mr. Joseph Rogers
- Mr. & Mrs. Roger A. Rolfe
- Mr. & Mrs. Harvey I. Rosen
- Rosenn, Jenkins & Greenwald, LLP
- Attorney Michael D. Rosenthal
- Mr. & Mrs. Richard M. Ross, Jr.
- Mrs. Mary Catherine Rotert
- Attorney & Mrs. Eugene Roth
- Mr. Jay C. Rubino
- Dr. & Mrs. Michael Rupp
- Attorney James J. Saultman
- Mr. & Mrs. Marino J. Santarelli
- Mr. & Mrs. Ronald Lee Sargeant
- Mrs. Sylvia Savitz
- Attorney & Mrs. Joseph I. Savitz
- Mr. Brian Scandle

- Attorney Richard P. Schifter
- Attorney Jonathan D. Schiffman
- Attorney Michael Schler
- Attorney & Mrs. Joseph Seiler III
- Attorney Michael Selter
- Attorney Gaurav I. Shah
- Mr. & Mrs. Alexander D. Shaw III
- Mr. Daniel Sherman
- Mr. & Mrs. Jay S. Sidhu
- Attorney & Mr. William Sikes
- Mr. & Mrs. Leonard Silberman
- Mr. & Mrs. Ronald Simms
- Dr. Elizabeth A. Slaughter
- Mr. Gerald Smith
- Sodexho, Inc.
- Mr. & Mrs. William B. Sordani
- Mr. & Dr. Andrew J. Sordani III
- Sordani Foundation, Inc.
- Mr. & Mrs. Estelle Sourthos
- Dr. & Mrs. Mark D. Stine
- SunGard Collegis, Inc.
- Mr. & Mrs. Kenneth H. Taylor, Jr.
- Ms. Lisa A. Tercha
- The Overlook Estate Foundation
- The Wachovia Foundation
- The Weininger Foundation, Inc.
- The Willary Foundation Board
- Mr. & Mrs. William R. Thomas
- John & Josephine Thomas Foundation
- Mr. & Mrs. William H. Tremayne
- Mr. & Mrs. Ronald D. Tremayne
- Mr. & Mrs. William J. Umphred
- Attorney & Mrs. Mark A. Van Loon
- Mr. & Mrs. B. William Vanderburg
- Estate of Ann Brennan Wagner
- Walgreens Co.
- Mr. Walt Walker
- The Wandell Charitable Trust
- Mr. & Mrs. James Ward
- Rabbi & Mrs. Bruce Warshal
- Dr. & Mrs. John Warella
- Mr. & Mrs. Gerald F. Weber
- Mr. & Mrs. Thomas Weeks
- Dr. & Mrs. Leslie P. Weiner
- Mr. Norman E. Weiss
- Dr. David J. Wells
- Dr. & Mrs. Paul A. Wender
- Dr. Gilbert Wildstein
- Attorney Brian Wildstein
- Wilkes-Barre Rotary Club
- Mr. & Mrs. Don E. Wilkinson, Jr.
- Mr. & Mrs. Gary H. Williams
- Mr. & Mrs. Martin E. Williams
- Mr. & Mrs. William J. Williams
- Attorney David S. Wolf
- Mr. & Mrs. Michael Wood
- Wyoming Valley Healthcare
- Estate of William H. Young
- Attorney Richard S. Zarin
- Attorney Jonah Zimles

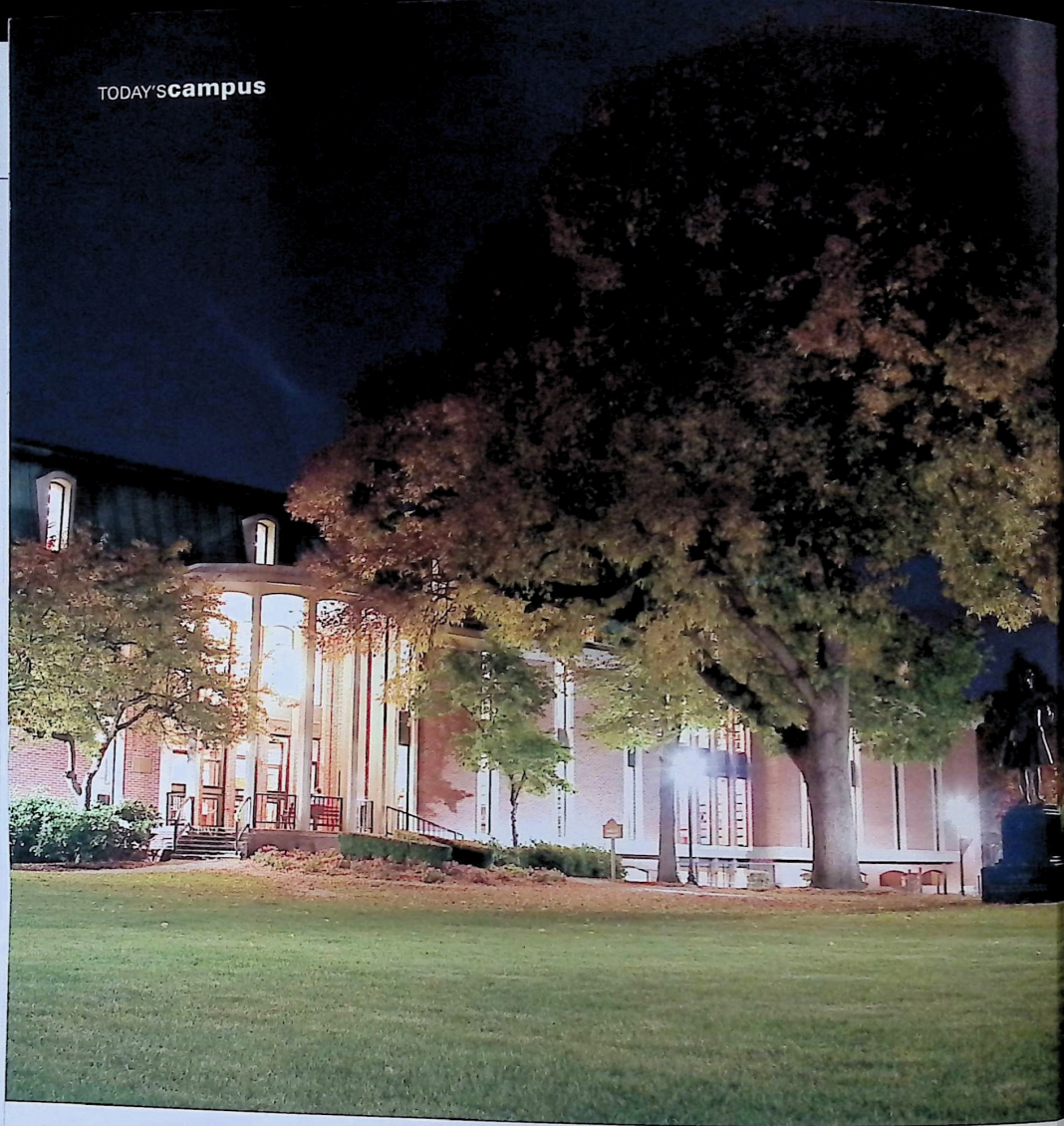


Al and Jane Lampe-Groh (at left) with President Tim Gilmour and his wife, Petty.

For more than four decades, Jane Lampe-Groh and Al Groh '41 have tirelessly served Wilkes University, its students and the community. They now continue their tradition of dedication by serving as co-chairs of the John Wilkes Society. This society is open to anyone who generously supports Wilkes by annually giving \$1,000 or more to the university. On behalf of Wilkes University, the Grohs thank all donors whose support has helped keep a Wilkes education an affordable mark of excellence.



TODAY'S campus



WILKES UNIVERSITY
Wilkes-Barre, PA 18766

Helenrary M Selecky
Library