

# The Beacon



Vol XXXVIII No 2

Wilkes College Wilkes Barre, PA 18766

September 12, 1985

## Wuori resigns

by Brian Potoeski

The resignation of Dr. Gerald K. Wuori as Dean of Admissions was announced Wednesday, September 4.

President Christopher Breiseth has appointed John Meyers, director of evening, summer and weekend programs, as acting Dean of Admissions.

The reasons behind the resignation are unknown; however, Wuori has given the *Beacon* a prepared statement.

"My ten-year association with Wilkes College has come to an end. As I look back over my years in the Admissions Office, I am filled with a very great pride over what has been accomplished. Yet, it is a pride tempered with humility as I recall the strength and dedication of the of the many people who made those accomplishments

possible. It is to them I extend my love, my respect and my deepest thanks for a job well done. I wish for Wilkes College the best of all possible futures," Wuori said.

Wuori declined to answer any questions.

According to Breiseth, Wuori will continue to serve the College.

"He is going to continue helping us in the admissions area working with Jack Meyers," Breiseth said.

Wuori will also act as special assistant to the Dean of Academic Affairs and will teach several courses in philosophy through the 1985-86 school year.

Breiseth commented about Wuori's seven years of service in the Admissions Office.

"I think what Dr. Wuori has built is a very strong structure, particularly as it

relates to recruiting students from outside the area," Breiseth said.

The president went on to say, "It's my judgement that we need to build on that, absorbing that structure.

"We've got to intensify our efforts in northeastern Pennsylvania. That requires not just the people in Admissions, but it requires faculty, students, alumni, and trustees, drawn together in a real teamwork relationship."

"Jack Meyers, I think, is going to give us immediately some help in developing that kind of teamwork across the campus as well as with some of our external constituencies like alumni," Breiseth said.

Within the next few weeks, Breiseth will appoint a committee to conduct a national search for a new Director of Admissions.



Changes made at Chase Hall

## Wilkes College to become University?

by Brian Potoeski

The possibility that Wilkes College may become Wilkes University in the near future is raised in the July 1985 draft of the Mission Statement.

The statement, which says, "Potential benefits to the curriculum may derive from the pulling together of related departments into schools, and such a structure should be carefully considered," is the focal point of the issue.

When questioned about this possibility, President Christopher Breiseth responded, "There is no plan at the present time for Wilkes' becoming a university."

However, Breiseth did admit that he is looking into the matter.

"I have asked to get some information from the State on just what processes we would have to go through."

Breiseth also said that the matter is being discussed informally in administrative circles.

Breiseth noted the benefits of Wilkes' becoming a university. "It would almost instantly convey the graduate mission of the institution. It might also convey the breadth of our curriculum, both in the liberal arts and the professional programs, both graduate and undergraduate," Breiseth said.

The president said, "Just the title 'university' would suggest the size, complexity, richness of the curriculum, and the type of students that we're serving, both undergraduate and graduate level, more than the word 'college,' which does suggest an undergraduate mission for the full-time student."

The term "university," applied to Wilkes, brings to mind the question of size. Universities are normally

considered to be large institutions; Wilkes is generally considered a small campus.

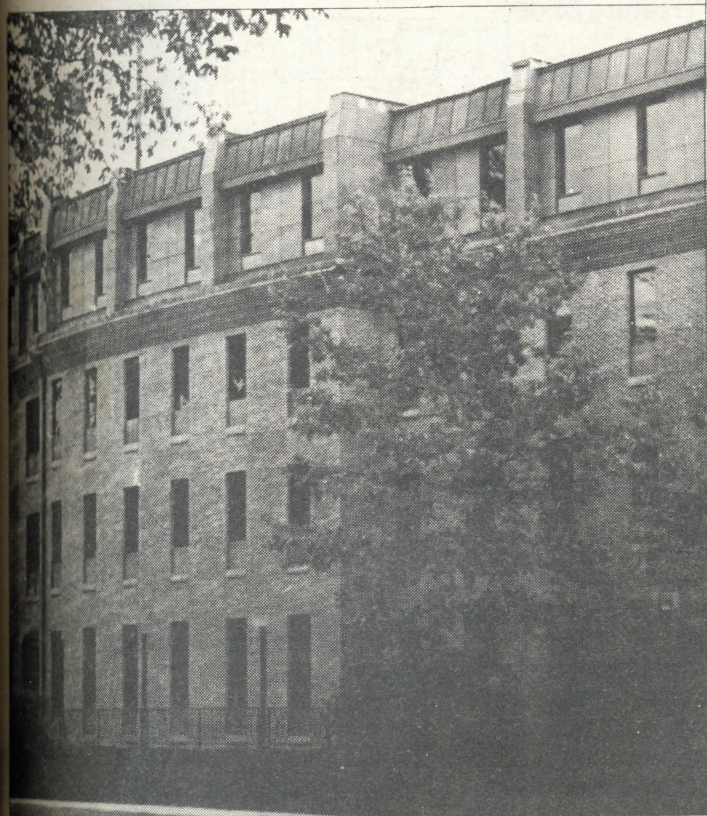
Breiseth disagrees with this perception.

"I think Wilkes is a more complex, richer institution in its curriculum than a lot of people, even people fairly close to the institution, appreciate. We have close to 3,000 students who are enrolled in at least one course working toward a degree. That's a large operation," Breiseth said.

The president has not taken a stand on the issue.

"I'm not sure where I stand. The identity for this community and the alumni, as well for the students who are enrolled here now, is with Wilkes College. I don't think you can give that up lightly," Breiseth said.

"After you write this, it would be interesting to see if it generates interest," Breiseth said.



## Wilkes U.?



## Editorial

### Friendly advice...

Consider this as wisdom for freshmen and an admonition for upperclassmen. We as students must remember that it's easy to criticize Wilkes College, just as it's easy to criticize any institution. "There's too much bureaucracy." "The Finance Office is hostile." "Caf food is inedible." "My prof is a jerk." "There's nothing to do." And the list goes on. But if one stops to think about Wilkes, it's not such a bad place. In fact, Wilkes can be a terrific place. But the key to a successful tenure at Wilkes is attitude. To use a somewhat hackneyed expression, you get out of Wilkes what you put into Wilkes.

Having thought about Wilkes and lived and studied here for three years, I have found several characteristics particularly noteworthy. First of all, Wilkes has a good faculty. For the most part, our teachers are willing and eager to match any student's enthusiasm for learning. In my days here, professors have played an integral role in my growth as a person. One indication of the faculty's willingness to serve students is their practice of holding regular office hours. Office hours make professors who might not otherwise be available very accessible to students.

Second, in a job market which is increasingly looking for liberally educated students, the core curriculum here at Wilkes, if taken seriously, makes a liberal education accessible to students of every major. The "market value" of an engineer, for example, who can write and speak intelligently greatly increases. In addition to the core curriculum, the availability of internships and practical experience make it possible for a student to gain valuable experience.

Third, students at Wilkes have virtually unlimited potential to make changes and improvements. They simply need motivation, conviction, and a sensible plan of action to effect change. For instance, several years ago, students changed the grading system. They also lobbied for a Fall Break and won. Essentially, students can change anything that they're willing to work for. However, it's not that simple once one graduates, alas.

This is not a "How to mature at Wilkes" sermon, if you're suspicious. It is simply friendly advice from one who has tried to take full advantage of the things Wilkes has to offer. Let me stress that nothing is changed or improved by lamenting the supposed lack of activities on campus. You get out of Wilkes what you put into Wilkes.

#### YOU CAN HELP US

The Beacon needs interested, informed people, just like you.

You are needed to write news or feature stories, photograph events on campus, sell advertisements, or cover Wilkes College sports.

You can put your talent and interest to work for you by joining the Beacon staff. You can gain experience and meet people just by making a contribution to your school paper.

Call extension 379 for details or stop by the Beacon office.

# JOIN TODAY!

An  
additional  
letter  
to  
the  
Editor  
may  
be  
found  
on  
page  
10.

#### Letters to the Editor

are welcomed.

If you have a  
concern,

a complaint, or  
a particular  
viewpoint,

let us know.

Names may be

withheld,

but all

letters to  
the Editor

must be  
signed to

insure

validity

### Corrections

In the article entitled "Faculty Retreat" in the September 5 issue of the Beacon, we reported that Jack Noonan commented on the national educational reports. It was instead Dr. Frances Fergusson of Bucknell University.

We also apologize for the poorly printed headlines in last week's issue. Repairs are in effect.

## Australian seeks pen pal

To the editor:

I am a patient at the Bendigo Psychiatric Hospital and I am having a good time while I am staying here and I love people of the U.S.A. I am writing asking for pen pals at your College.

Could you send me some books about becoming a minister of the Seventh Day Adventist Church. I know that reading the Bible and faith in God is the best method. Without faith it is impossible to please him.

I have pen pals around the world from countries like East and West Germany,

Austria, Southeast Asia, South Korea, West Indies and my favorite, the U.S.A.

I love the U.S. Army, Navy, and Air Force. I love the American people very much.

Could you please put my letter on a window near your office so to get as many pen pals as possible at your college. Thank you.

Peter John Gilbert  
1 Coath St.  
Golden Square  
Victoria  
Australia, 3555

## The Beacon

VOL. XXXVIII

No. 2

September 12, 1985

Editor-in-chief.....Criseyde L. Shallers

News Editor.....Brian Potoeski

Feature Editor.....Daniel Duttinger

Sports Editor.....William Buzza

Copy Editor.....Elizabeth Mazzullo

Photography Editor.....Brian Dorsey

Advertising Manager.....Diane Haberkern

Business Manager.....Joseph E. Fulco

Distribution Managers.....Al Knox

.....Robert Fernandez

Advisor.....David W. Evans

**Contributing Writers:** Ellen Campbell, Eric Chase, Beth Cortez, Stacey Baldwin, Alex Kassay, Bob Nause, Randy Rice, Mark Tobino, Frank Wanzor.

Published weekly during the fall and spring semesters excepting scheduled breaks and vacation periods. All views expressed are those of the individual writer and not of the publication or the College. Names may be withheld from letters to the editor, but all letters to the editor must be signed to insure validity.

If you h

Locke

CROIS

Featuring the  
croissants  
VARIETIES BA

Plus-Our own  
MUFFINS, I

Häagen  
CO

G  
G  
YES

A cut a  
\$9.95

Patti al

App



BUSIN  
HOME



**Notice:**

To all students who have lockers  
in Stark Learning Center.  
If you have not renewed your locker for the  
1985-86 school year  
please see  
Dawn Waldorf-Hayes in SLC 57.  
Lockers must be rented on a yearly basis.

## CIRCLES ON THE SQUARE

#9 PUBLIC SQUARE  
829-4005

### CROISSANTS

Featuring the only ALL BUTTER  
croissants in the Valley 20  
VARIETIES BAKED ON PREMISES  
DAILY!  
Plus-Our own COOKIES, TURNOVERS,  
MUFFINS, BRIOCHE & MORE!

### NY Style Deli SANDWICHES

Exclusive to W-B Boarshead Deli Meats &  
Cheeses. ONLY at Circles on the Square.

### Take-Out SALAD BAR

FABULOUS! Selections change everyday

### Häagen-Dazs CONES

We have  
DORM PARTY  
Platters  
call us

OPEN M-F 7:30 - 6, Sat 11-5.

**10% OFF** ANY ITEM WITH THIS AD  
AND STUDENT OR  
FACULTY I.D.  
GOOD THROUGH 10-5-85

# SG to sponsor sub party

by Alex Kassay

Student Government will sponsor a party in the Conyngham Student Center this Friday from 9 p.m. to 1 a.m.

The decision was made during Monday night's meeting.

SG has been given approval for a Student Center party from the Student Affairs Committee.

This party will be a trial one for Wilkes students because of damage to the Student Center during a party last year.

SG urges students to be mature while having a good time. As Dean Arthur Hoover stated, "Social awareness and responsibility is the thing we need to practice."

The party will be B.Y.O.B.

"We Can Make You Laugh," a comedy act, will appear in the Wilkes College gymnasium September 28. This decision came about after some confusion in getting the Center for The Performing Arts on that date.

It was suggested that the gym would accommodate the crowd better than the CPA. Last year the CPA was overcrowded with students and with other people from the community. The admission price will be \$1.

According to Jacqui Kramer, the turnout for class officers has not been very good. Kramer and other members of SG agree that this may be due to poor communication channels.

Commuter Council and Inter-Residence Hall Council

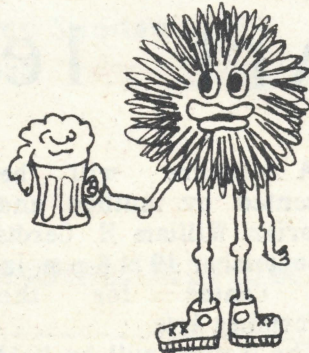
elections will take place on Thursday, September 19.

Nominations for SG recording secretary were made at the meeting. The only nomination was for Jacqui Kramer. Nominations will be left open until after replacement elections are over.

This year's budget is expected to be approved on Saturday by the Board of Trustees, according to Chase.

A discussion of plans for a carnival were postponed until next week. SG members are not sure if they want rides and booths or just booths.

Attendance was higher than last week. Chase stressed the importance of more input in order to get jobs done.



### Students and faculty do you have talent ?

Then you are invited to submit your  
poetry, prose, or artwork to the  
Manuscript office for possible  
publication  
in the  
**Manuscript.**

Deadline for submission is  
March 6, 1986.

# GET SOME GREENBACK!

**YES!** You can afford a great  
haircut - if you go to  
Patti's Hair Fashions.

A cut and blow-dry for girls is only  
\$9.95 and guys cuts are just \$6.95  
with Wilkes College I.D.

Patti also offers \$5 off on perms for  
Wilkes College students.

Appointments are usually not  
necessary.



*Patti's Hair Fashions*

BUSINESS - 822-1898  
HOME - 639-1713

109 S. FRANKLIN ST.  
WILKES-BARRE, PA

### SNACK BAR SPECIALS

Sept. 16-20

#### Monday

Beef and Macaroni  
Casserole  
Beef Noodle Soup

#### Tuesday

Baked Chicken and  
Noodle Casserole  
English Cheese Soup

#### Wednesday

Open Faced Roast Beef  
Sandwich  
Beef Minestrone Soup

#### Thursday

Chicken Chow Mien with  
Rice

Chicken Corn Soup

#### Friday

Macaroni and Cheese  
Manhattan Clam Chowder

Open Sundays 6:00- 11:00 pm.  
12" PIZZA  
Take-outs available  
822-2827



## Boutique de Paris

**10% OFF**  
**Regular  
Merchandise  
With College ID**

**New Fall Merchandise Arriving Daily**

Layaways Welcome  
109 S. Franklin Street 829-0110  
Hours: Daily 'til 5:00; Thurs. 'til 8:00






# Wilkes students to become doctors

by Brian Potoeski

The Wilkes College Health Science Office recently released the names of 42 students who will attend doctoral health professional schools. Among the admissions were those students accepted into dental, optometry and podiatric medical schools under special programs.

These programs require only three years at Wilkes before the student enters professional school. They are patterned after the Wilkes-Hahnemann Program in Family Medicine with joint Bachelor of Science degrees given by Wilkes and Temple School of Dentistry, Pennsylvania College of Optometry and Pennsylvania

College of Podiatric Medicine.

Eleven Wilkes students will attend Temple. They are David Balestrini, Plains; Michael Brogna, Pittston; Salvatore Infantino, Pittston; Edward Slusser, Dupont; Michael Przywara, Old Forge; Denise Grabenstetter, Dallas; Mark Ogradnick, Barnesville; Brian Schoenly, Reading; Vicki Inglis, Falls; Christine Bruno, West Pittston; and Jeffrey Manzo, Moosic.

Students attending the Pennsylvania College of Optometry are Stephen DiMarco, Phillipsburg, N.J.; Joseph Serniak, Monroe, Conn.; Jerome Galanti, Berwick; Steven Bachinsky, Milmay, N.J.; John Kurovsky, Wilkes-Barre; and Jeanne Murphy, Clarks

Summit.

Those attending the Pennsylvania College of Podiatric Medicine are Kimberly Edwards, Dallas; Randy Aaranson, Cherry Hill, N.J.; Lori Ann Kocur, Saint Clair; Karen Galli, Nanticoke.

Wilkes College students accepted to date in allopathic and osteopathic medical schools are as follows. At Jefferson Medical are Leonard Tananis, Pottsville, and John Ogradnick, Barnesville. Temple

University School of Medicine students include Weldon Schaffer, Canton; Myron Yencha, Wilkes-Barre. University of Health Sciences--Kansas City Osteopathic students include Christopher Justofin, West

Hazleton; and Paul Mastroykiakos, Stroudsburg. Ohio College of Podiatric Medicine Students include Kevin Romanko, Clinton, N.J., and John Longobardo, Hillsdale, N.Y.

Also accepted are Raymond Durkin, Trucksville, at Hahneman Medical College; Mary Kazanecki, Wilkes-Barre, at University of Pittsburgh School of Medicine; Sharon Nicole Weiss, Denver, Colorado, at the New York Medical School; Charles Miraglia, Durham, NC, at Bowman Gray School of Medicine, Duke University; Tina Raggert at Virginia Medical School, University of Virginia; Mary Jo Golden, Wilkes-Barre, at Pennsylvania College of

Osteopathic Medicine.

In addition Wilkes College announces the following list of students accepted to continue their education at the Temple University College of Allied Health Professions.

Two of these programs, Physical Therapy and Occupational Therapy represent new programs Accepted at Temple University School of Pharmacy are Brian Mayhue, Wilkes-Barre; Michael Pristas, Pottsville; Gary Wills, Dunmore; and Lynanne Lord, Minersville. Accepted for Physical Therapy are Risa Hanau Broomall, and Laurie Omolecki, Nanticoke. Occupational Therapy Carol Laboda, Wilkes-Barre.

## Art lecture scheduled

A lecture will be presented by author and historian William H. Gerds on September 19 at 8 p.m. in the Center for the Performing Arts.

The lecture will be held in conjunction with the exhibit of American impressionist painters at the Sordoni Art Gallery. The exhibit opened September 7.

William Gerds' most recent work, American Impressionism, follows the development of the American impressionist movement as it developed into two distinctive schools.

The Ash Can school focused on the harsh realities of the growing American metropolis, while

the Boston school produced more subtle, genteel works portraying upper or middle class America.

The exhibit, entitled "Directions in American Painting, 1875 to 1925," will present works which adhere to either school.

The exhibit demonstrates that while the origins of impressionism can be attributed to Europe, the culmination of the form must be credited to America.

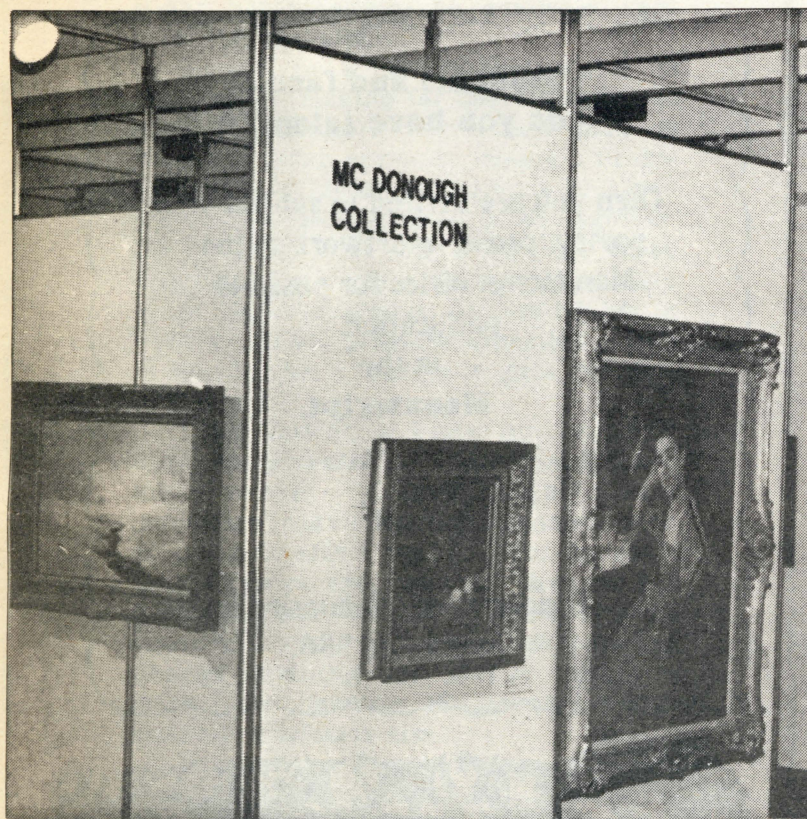
Although many of the works show the influence of the Europeans, including Degas, Monet and Renior, it is possible to trace the many innovative directions taken by Americans such as Paxton, Cassatt, Hearn,

Sargeant and Lawson as they developed the form.

The exhibit is on loan from the private collection of Dr. John J. McDonough. McDonough began assembling this collection after he sold his first collection in 1965.

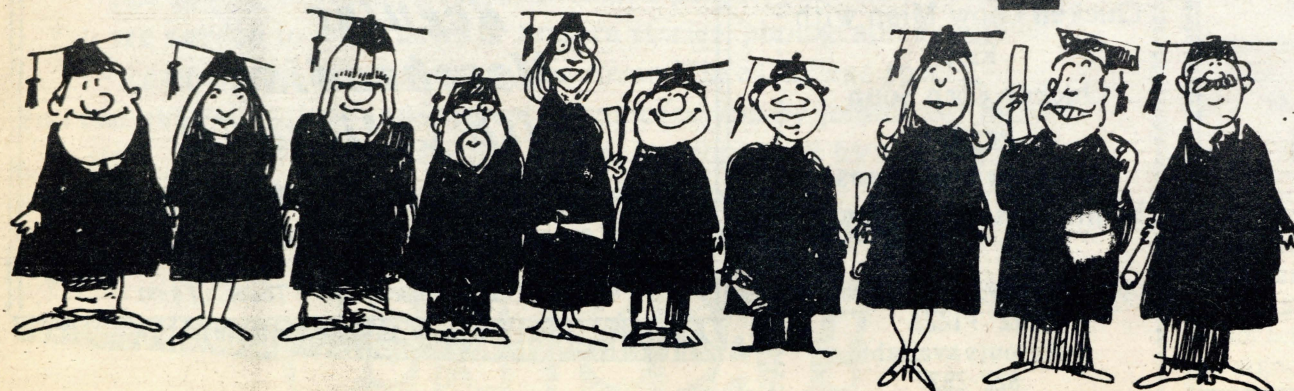
"It is rare to find a collection that is so precisely focused on one period of art," Judith O'Toole, director of the gallery, said.

O'Toole explained the theme of the exhibit. "It's a survey of American impressionists who were influenced by the French neo-impressionist painters," O'Toole said.



McDonough exhibit at Sordoni

## Graduating?



Remember  
your senior  
portrait

See schedule on page 9.



## WILKES COLLEGE SKI CLUB

### 1985-1986 Planned Trips

January 4-10: Colorado/Steamboat--"College Week"  
Travel: Air to Denver/Bus to Steamboat  
Approximate cost: \$500  
Deposit: Necessary by end of Sept.

January 6-11: Quebec/Mont St. Anne  
Travel: Bus  
Cost: \$249 (quad)  
includes some meals

February 21-24: "Wilkes College Vermont Weekend"  
Travel: Bus  
Ski on Saturday at Stowe and Sunday  
and Monday at Sugarbush  
Cost: \$249 (quad)  
includes meals

Ellen's column

## Going back to school

by Ellen Campbell

Some of us were not meant to go to college at 17. I should have honed my typing skills and found employment as a secretary rather than followed my high school classmates on the traditional path to the local university. By 19, I was married, and it was with a sense of relief that I left an atmosphere which held for me no comfort, purpose or meaning.

The years between 19 and 29 were a classroom of a different sort as I grew alongside my children. Eventually, I knew the half-hearted promise to "someday complete my college education" had matured to a vow I fully intended to keep. My life now furnished a point of reference for education, and the need to reach beyond the familiar safety of home and children was vital.

In August, 1984, "the plan" was set in motion. That day, my youngest children climbed on a bus taking them to kindergarten while I, their equally nervous mother, entered my car and returned to school here at Wilkes.

To my delight, I discovered others beyond the age of 21 who found a need to pursue a college education. Statistics estimate that one-third of the 12.4 million U.S. students enrolled in degree programs are over 25 and that the majority are women.

Colleges and universities are tailoring programs to meet the needs and to accommodate the lives of these non-traditional students. Smith College in Northampton, Mass., has developed a unique program for women over 22, as have sister colleges Wellesley and Mount Holyoke. Here at Wilkes, the assortment of numerous evening courses, weekend college and arrangements for child care reflect local sensitivity to the adult learner.

Education means something entirely different at 32 than at 19. I hunger to use my brain. I delight in expanding my horizons, and I thrill at seeing the applications to life which education offers. Each of us is challenged by life to become a person of purpose and substance. A college education should be an opportunity to stretch and reach that richer purpose. Some of us can effectively meet that opportunity at 17, while others welcome the chance at 32.

Welcome Back!

11:00 A.M.  
TO  
11:00 A.M.  
CLOSED  
SUNDAY  
Modesto's  
N.Y. N.Y.  
NEOPOLITAN

# PIZZA

Italian HOAGIES

	Med.	Large
Plain	4.25	5.25
Onion & Peppers	5.25	6.25
Mushroom	5.25	6.25
Pepperoni	5.25	6.25
Sausage	5.25	6.25
Anchovies	5.25	6.25
Kielbasa	5.25	6.25

No extra charge on any combo of items Half and Half  
Extra Toppings \$1.00

4-6 WEST NORTHAMPTON STREET  
TEL 829-9078

FREE DELIVERY MINIMUM ORDER \$5.00

SAVE \$1.00

on large pie  
with coupon

coupon expires Sept. 15, 1985

MODESTO'S  
New York Style  
PIZZA

### THE TEMPLE ISRAEL CONGREGATION

extends an invitation to all  
Jewish students to worship  
with us for our coming  
High Holy Days

The following is a list of services to be held  
at Irem Temple, 52 N. Franklin Street:

Rosh Hashonah (1st day), Sept. 16, 9:00 a.m.

Rosh Hashonah (2nd day), Sept. 17, 9:00 a.m.

Kol Nidre Eve, Sept. 24, 6:30 p.m.

Yom Kippur Day, Sept. 25, 9:00 a.m.

Should any student desire home hospitality for a  
holiday meal, please contact the Temple office  
(824-8927) and arrangements will be made.



Surprise!

AT OUR NEW  
LOCATION  
Rob & Mary Kay  
Donnelly  
82 South Main St  
Wilkes-Barre, PA  
717-825-2001

Betty McDonald  
owner

### NUMBER 9 SHOP

9 W. Northampton St. (corner S. Franklin St.)  
Wilkes-Barre, Pa. 18701  
Phone: (717) 825-2024

IMPORTED CLOTHES JEWELRY ACCESSORIES



# Critter's weekend forecast



**ARIES:** Be especially nice to people with blonde hair this weekend, especially if you dislike them at first. One of these light-haired individuals could end up being your husband or wife sooner than you think.

**TAURUS:** If you heeded last week's advice--congratulations! Get out and show off your new body. Otherwise, I'd start considering Weight Watchers.

**GEMINI:** This is your weekend! Be polite to everyone you meet, and you'll make loads of friends (as opposed to friends who are loads).

**CANCER:** Have you ever thought of opening your own business? This weekend is the time to start thinking about it. You should especially look into the fast food and rubber industries.

**LEO:** You've been cooped up all week, so why not get out and enjoy yourself this weekend? According to my sources, there is no way to have a bad time on Saturday. Live it up!

**VIRGO:** Be especially nice to your professors this coming week. They may be the only friends you have. If you're smart, you'll devote this weekend to intensive study. Stay away from Leo.

**LIBRA:** I see a long road trip in your future. Although I can't give you any details, I can ask, "Does the word 'Odyssey' mean anything to you?"

**SCORPIO:** Did you have a good time last weekend? I hope so, because this weekend will prove to be the pits. Lock yourself in your room and avoid extensive human contact.

**SAGITTARIUS:** According to my sources, you've been avoiding someone who means a great deal to you. Please show him or her some affection before it's too late.

**CAPRICORN:** Stop letting people step all over you! You've got to start looking out for number one. Don't be rude, just be confident.

**AQUARIUS:** Aries, Taurus, Pisces and Libra individuals will be extremely important to you this weekend. Do not pass up an opportunity to travel with them.

**PISCES:** This weekend, stay away from people who are known for playing the field, either male or female. If they're into that sort of thing, have them date a baseball player.

## Biology department offers scholarships

by Beth Cortez

Starting this year, the Biology Department will award scholarships to incoming students. Five freshmen will each receive \$1,000 for their first year at Wilkes. The scholarships are non-renewable and are based on academic performance in high school. Any incoming biology major is eligible.

According to Dr. Lester Turoczi, department chairperson, the purpose of these new scholarships is to enhance recruitment. While the Biology Department already attracts many fine students, the department hopes to attract even more with this new scholarship.

Potential freshman biology majors will receive letters from the department informing them of the scholarship. Anyone interested in applying will

receive the scholarship package. One of the major selection criteria is an essay written by the student concerning some biology topic.

This year, the department committee which chose the scholarship recipients included Dr. Kenneth Klemow, Dr. Penny Padgett and Turoczi.

This year's recipients of the Grace Kimball scholarship are Ruth Gavazzi, Dallas, Pa.; Mari-Beth Montaldi, Mercerville, N.J.; Patrice Pienta, Pittston, Pa.; Gary Torbey, Slatington, Pa.; and Michelle Krasucki, Muncy, Pa.

The scholarship money comes from interest earned on an inheritance fund left to the College by the estate of Dr. Grace Kimball. Kimball was a faculty member at Wilkes, where she taught microbiology.

## COMING NEXT WEEK...

### "Dear Gabby,"

The funniest advice column in decades!

Dear Gabby will astound you with her wisdom, amaze you with her ingenuity and bring you to your knees with her wit! This column is not to be missed. Please drop off your letters in the bookstore, addressed to:

Dear Gabby  
c/o the Beacon

SEE YOU NEXT WEEK!

Sy

Tuc  
com

by Eric Ch

Can we  
according to  
Tucker, you  
That is, "Y  
communicate.  
Tucker is  
chairperson  
newly-formed  
communications Depart  
originally fr  
Ohio, and h  
worked as a  
communication  
James Madi  
research mar  
Arbitron Ratin  
The Co  
Department s  
umbrella for  
speech,  
journalism and  
entire co  
program at W  
more clearly c  
the coming year



# Synch on the way to the top



Synch

by Dan Duttinger

It is the dream of all newly-formed musical groups someday to join the ranks of bands such as the Beatles, Bruce Springsteen and the E Street Band and Wham!—bands which clearly made it to the top of the musical ladder. Unfortunately, the road to the top is usually a long and difficult one. Most groups fade away before they even get started. That is not the case for a local band that has recently been in the limelight. As you may have guessed, that band is Synch.

Synch, which was formed in November, is currently composed of Chaz Evansky (drums, percussion), Chuck Yarmey (keyboards), Dave Abraham (guitar, backup vocals), Jeff Ball (bass guitar, backup vocals) and Jim Harnen (vocals). All members of the band with the exception of Yarmey have attended Wilkes College.

From the beginning, the band's goal has been to create an "original band" with a "semi-fresh look," and most listeners will agree that

they have accomplished just that. Synch's hit single, "Where Are You Now?" has been burning up the local charts and has recently been receiving airplay in Bloomsburg, Allentown and Philadelphia.

The band's big break came when it was chosen by WKRZ to be the opening act for Bon Jovi at a recent concert at Rocky Glen Park. Since that time, the band has gained tremendous local popularity, having recently sold out two concerts at Angela Park.

"Where Are You Now?", with music by Rich Congdon and lyrics by Jim Harnen, was created in November. In March it became part of a 24-track recording put together at Susquehanna Sound in Northumberland, Pa., under the "Micki Records" label. A subsequent record release party at the Factory in downtown Wilkes-Barre drew over 660 fans.

According to lead vocalist Jim Harnen, the song, which has sold 2,000 copies to date, has been the most requested song for over a month on Q-102's "Top 3 at 11" and has

been number one for over 12 weeks at Wilkes' radio station, WCLH.

When asked to describe Synch's sound, bass guitarist Jeff Ball replied, "We like to call it 'pop with an edge'." Harnen explains that the band doesn't want to limit itself to a specific type of music. Instead, the group plans to write ballads, rock, and dance tunes—each with a certain uniqueness.

What are Synch's plans for the future? The group is currently working with Dakota at Holland Sound in Dunmore, Pa., and hopes to release a new extended play by November. By that time, if the group does not receive a contract from a major record company, the members plan to play locally to promote their music.

While it may be true that Synch is not yet ready to compete with the likes of Chicago or Huey Lewis and the News, one thing is certain: Synch has already attained more success than most groups can ever even hope to attain, and they certainly have the potential to go much further.

## Tucker assumes communications position

by Eric Chase

Can we talk? Well, according to Dr. David Tucker, you have to talk. That is, "You have to communicate."

Tucker is the department chairperson for the newly-formed Communications Department. He is originally from Cleveland, Ohio, and has previously worked as a disc jockey, a communications professor at James Madison and a research manager for the Arbitron Rating Company.

The Communications Department serves as an umbrella for such fields as speech, broadcasting, journalism and theatre. The entire communications program at Wilkes will be more clearly defined within the coming year.

Internships and field experience are still necessary ingredients. Tucker feels students need to get more involved with communications-related activities such as the Beacon, the Speech and Debate Union, WCLH and broadcasting.

Unlike fields such as accounting, communications has no "Big 8" firms that come searching for the best communications students. Therefore, said Tucker, "You need to be pushy."

Tucker notes that even though Communications is now separate from Language and Literature as a department, Communications will not become simply "knob-twisting and button-pushing." The student will still have to write, create and think. Wilkes College will

not become "Wilkes Technical Institute," according to Tucker.

At Wilkes, the student has an opportunity to learn much more in communications due to the relatively small number of students in the program, as compared to the number of students at other colleges.

Many colleges, according to Tucker, tell freshmen that they had "better assume it to be a five-year program," due to the line-up for upper-level courses and internships. This problem does not exist at Wilkes, which offers facilities that can be utilized by students of all levels.

Tucker, whose office is located in Capin Hall, Room 3A, welcomes opinions and will talk to any interested student or faculty member.



Dr. David Tucker



# The men of shipping and receiving

by Robert Nause

The Wyoming Valley is often referred to as the "valley with a heart." This valley prides itself on being a caring and friendly community, a community of which Wilkes College is definitely a part. At Wilkes, there are two men who exemplify this spirit to the highest degree. They are John Pesta and Bob Urban.

John and Bob are employed in the Shipping and Receiving Department of the College, a department which often does not receive nearly half of the credit it deserves. The best way to describe their duties in the Shipping and Receiving Department is to say that they do just about everything.

Accompanying John and Bob is Dawn Hayes, their secretary, who helps to coordinate shipping activity. Receiving products and then distributing these products throughout the College may seem a minor task. Although American Building Maintenance (ABM) is contracted to handle the College's maintenance needs, there are times when John and Bob are called upon to take care of such matters.

After working in the Shipping and Receiving Department last winter and

this summer, I can attest to the fact that the work is hard and sometimes unnoticed and unappreciated. The demands of the College never seem to ease.

With a positive "If we don't do it, who will?" attitude, John and Bob go about their duties, large or small, in a manner which forced me to ask them why they put forth such strenuous efforts. After a while, however, I was able to understand why. John and Bob like the work they do. Although the College's demands can be frustrating at times, they take a great deal of pride in their work, which often includes carpentry, wallpapering, painting and a host of other things.

The pride they put into their work is always coupled with their dedication. If you wonder how dedicated they are, you should have stopped by Shipping and Receiving two weeks before the semester began and taken a glance at the work orders and requests that streamed into their office.

In trying to answer the requests, John and Bob spent more than just handful of hours working past their usual 8 a.m. to 5 p.m. day. Although some things might not have been completed in time, they tried, which is

more than many people would have done.

Even though they spend much time at Wilkes, they do have some spare time.

John has a wife and three sons. Level-headed, usually calm, soft-spoken, and holding a degree in psychology, John is a superior carpenter and wood craftsman. John is easy-going but also stern when necessary. One only needs to ask Gerard Piazza, Shawn Miller or me to verify that point.

Although John's position as head of the department requires him to direct the scheduling of work that

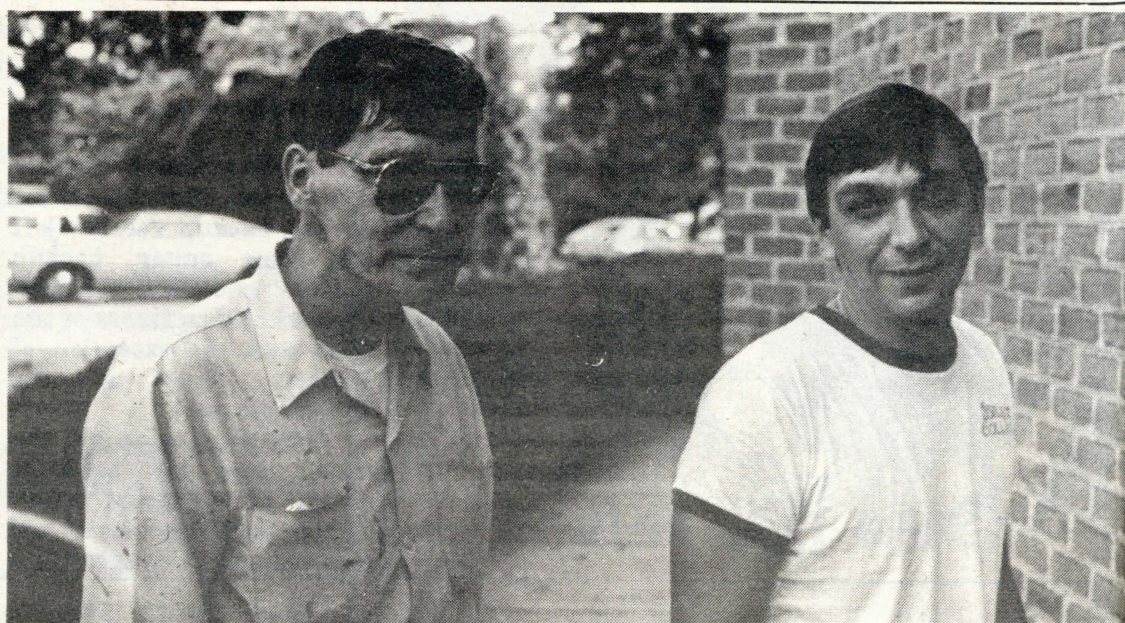
needs to be done to those under him (part-time students on work study), he doesn't place himself above others. He takes the time to learn about those working with him.

Bob spends much of his spare time going out, fishing in the river and trying to help Wilkes students. Bob is almost always thought of on campus as being high-spirited, fun-loving and helpful. Time after time, Bob tries to ease the difficulties of living on campus in many ways. He always carries more than his share of the workload.

Like John, Bob is

interested and concerned about the students' life. I can recall many a pleasant conversation with Bob. Some of the times that we spent together just talking and relaxing, such as the Fourth of July, will always remain warm and positive memory. I believe that the word "friend" in all of its meanings is exemplified in Bob. His giving is endless and his desire to receive in return is virtually nonexistent.

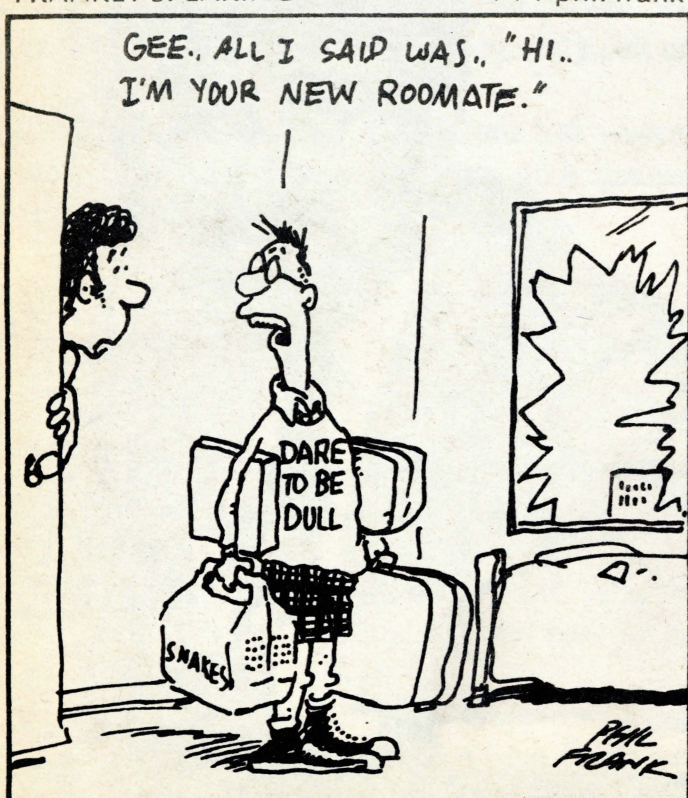
Together, John and Bob form a unique duo which keeps the College running as smoothly as possible.



John and Bob help keep the College running smoothly.

FRANKLY SPEAKING

phil frank



© CREATIVE MEDIA SERVICES Box 5955 Berkeley, CA. 94705

## This Weekend...

**FRIDAY:** Manuscript Film Series, "Being there"  
AFROTC Open House  
Volleyball--Western Maryland (A)

**SATURDAY:** Football--Lebanon Valley (H)  
Soccer--Messiah (A)  
C. Country--Elizabethtown and King's (A)  
Field Hockey--FDU (A)  
Volleyball--Messiah (A)

**SUNDAY:** Field Hockey--Drew (A)  
Concert and Lecture Series, Mabsant: Welsh  
Singers, 8:00 p.m., CPA

Take adva  
meal tic

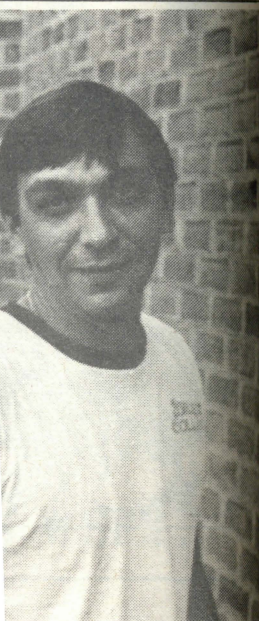
Meals ma



# ving

interested and concerned about the students' lives. He can recall many a pleasant conversation with Bob. Of the times that we spent together just talking and relaxing, such as the first of July, will always remain warm and positive memories. I believe that the "friend" in all of these meanings is exemplified by Bob. His giving is easy and his desire to receive is nonexistent.

Together, John and I form a unique duo that keeps the College running smoothly as possible.



smoothly.

## Senior portraits for the Amnicola will be taken on the following dates:

Monday, Sep. 30:	1-5 pm.
Tuesday, Oct. 1 :	10-1 pm. 2-5 pm.
Wednesday, Oct 2:	9-12 pm. 1-4 pm.
Thursday, Oct. 3:	1-5 pm. 6-9 pm.
Friday, Oct. 4:	9-12 pm. 1-4 pm.

Please show up at your  
appointed time.

You must have your sitting fee  
and \$2 if you want the  
1986 Amnicola mailed to you.

IT'S  
TIME  
TO  
HELP!



### COMMUTER STUDENT SPECIAL

Take advantage of reduced price, "all you can eat,"  
meal tickets for use in Pickering Dining Hall.

*Homemade Soup  
Choice of Three Entrees  
Complimentary Vegetables  
Complete Salad Bar  
Assorted Breads  
Selection of Desserts  
Many Beverages*

5 Luncheons \$12.00  
5 Dinners \$16.00

Meals may be taken anytime during the school year.

# College nurse speaks up

by Mary Supey

Although the weather feels like summer, the stack of books and the lists of reading assignments, papers, and quizzes are clear evidence of the fact that the fall semester is well underway.

This is a good time to re-acquaint you with the College Health Service: who the members are, when and where you can find them and what services they offer.

The Health Service is staffed by two registered nurses; Mary Supey, R.N., B.S.N., and Betty Kwak, R.N.

Their office, located on the second floor of the Conyngham Student Center,

is open Monday through Thursday, 8 a.m. to 10 p.m. and Friday, 8 a.m. to 4 p.m.

When the Health Service is not open, the First Aid Squad handles any emergencies on campus. Squad members can be reached by dialing extension 473 or 399.

In addition to their routine clinical duties, the nurses make house calls, provide health education, respond to emergencies on campus and attend meetings of all sorts.

Don't despair, though, they can be reached by beeper at any time. Just dial extension 494, explain your urgent problem, and help is

on the way.

The College Health Service is a primary care center. That means it's your portal for entry into the health care delivery system. It does not mean that the nurses or first aid squad can cure all of your ills there on the spot.

They listen as you explain your problem, and then they complete a physical assessment and decide, consulting the patient, what course of action to follow. This may seem rather lengthy for a "simple" headache or cold, but caring takes time, so please be patient (pardon the pun).

## "open hours" for the gymnasium will be:

Monday Through Friday: 8 p.m. to 11:30 p.m.

Saturdays: 1 p.m. to 6 p.m.

Sundays: 1 p.m. to 7 p.m.

For information contact

Marc Graves, Mark Gerbino, Dennis Mejias,  
or Jeff Steeber.

## The weight room in Weckesser annex will be open:

Monday through Friday: till 8 p.m.

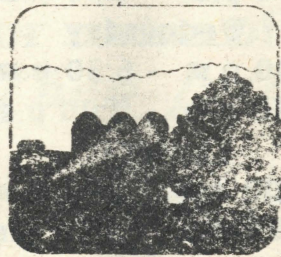
Saturdays: 1 p.m. to 5 p.m.

Sundays: 2 p.m. to 6 p.m.

For information contact

Andre Miller or Jerry Scaringe.

### HILLSIDE FARMS ICE CREAM STORE



Boscov's Lower Level  
across from the deli

open: 10-9 Mon.-Sat.  
12-5 Sunday

With this coupon, receive a double-dip  
cone for the price of a single  
at **Hillside Farms Ice Cream**  
*Coupon expires September 18, 1985*

### Photographers



**Needed for the  
The Beacon**  
Call extension 379



The following letter to the editor was submitted late in our publication process, but we felt it was important enough to run in this issue. The author has requested anonymity.

Editor:

The following is offered as a possible revision of the College Mission Statement.

Wilkes College is an independent, non-denominational college that forges the link between a quality liberal arts and sciences education, professional preparation, and service. Students, faculty, curriculum, and extracurricular activities work together to forge this union and its happy results: graduates ready and willing to meet the challenges of our ever-changing world and fully prepared for graduate or professional school.

Combining liberal learning, professional preparation, and service is basic to success, but it is no small task. Wilkes accomplishes it by starting with motivated students and a highly qualified and dedicated faculty. Wilkes has a long history of accepting students of diverse backgrounds who are then challenged by the faculty to excel and succeed. The low student-faculty ratio at Wilkes and the faculty's emphasis on teaching assure each student the opportunity to work closely with the faculty. Teachers go out of their way to foster every student's academic and personal growth.

Students and faculty need a strong curriculum so graduates are prepared for full service in the modern world. Wilkes has that strong curriculum. Students can major in the humanities, the natural, physical, and social sciences, or in quality programs in such varied fields as accounting, business, communications, computer science, engineering, music, the health sciences, and nursing. But whatever the major, each student is required to take courses in the traditional disciplines. Wilkes recently has reaffirmed its long-standing commitment to this core curriculum. Core courses are designed to ensure that each student writes and speaks effectively, works successfully with mathematical concepts, and acquires computer literacy. Additionally, while the core fosters critical and creative thought, the faculty strives to see that all students grasp the connections that unite all knowledge--and mankind. Of course, students still can tailor their programs with electives to match their particular needs and interests.

Theoretical classroom knowledge is important, but practical

application of this knowledge is crucial for students to further develop their abilities and serve their fellow man with intelligence and imagination. Such a balance of the theoretical and practical is a hallmark of a Wilkes education. Teachers encourage students to use what they learn by serving internships and by participating in cooperative education with local firms. The wide range of extracurricular activities (including musical performances, athletics, radio and television broadcasting, student government, debate, drama, social service organizations, the College newspaper, and various clubs) at Wilkes also invite students to discover that knowledge is not to be hoarded but shared and applied to benefit all.

Wilkes emphasizes the application of knowledge by another vital part of its mission: the College's own service to Northeastern Pennsylvania. Wilkes encourages the fine arts and the performing arts with its art gallery, its modern, well-equipped theatre, and its many regularly scheduled cultural events. The College library is a comprehensive resource center for the region, while the entire College is a regional center for engineering, science, and technology. Wilkes's Small Business Development Center and Institute for Regional Affairs serve the community's businesses. Of course, students are given every opportunity to help Wilkes serve its community.

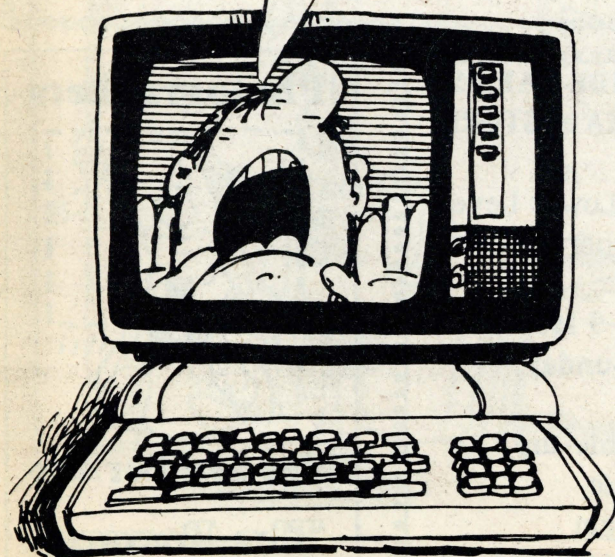
Although primarily an undergraduate school, Wilkes provides another important service by offering graduate degrees. Teachers in the area can earn master's degrees in education and in the humanities, social sciences, and sciences. Other professionals are served by master's programs in business administration, electrical engineering, engineering and applied sciences, and health administration. Wilkes also has a growing continuing education program for learners of all ages.

Liberal learning, professional preparation, and service. With these goals motivating its actions, Wilkes College approaches the twenty-first century dedicated to forging "unity amidst diversity," the College motto.

## Into software ? Well I've got news for you !

### COMPUTER LAB HOURS

**HELP!**



#### MACINTOSH LAB SLC 133

**Monday**  
2:30 p.m. - 11:00 p.m.  
**Tuesday**  
11:00 a.m. - 1:00 p.m.  
11:00 p.m. - 4:00 p.m.  
**Wednesday**  
1:30 p.m. - 6:30 p.m.  
9:30 p.m. - 11:00 p.m.  
**Thursday**  
11:00 a.m. - 1:00 p.m.  
4:00 p.m. - 11:00 p.m.  
**Friday**  
Closed  
**Saturday**  
Closed  
**Sunday**  
Closed

#### APPLE LABS SLC 127

**Monday**  
8:30 a.m. - 5:30 p.m.  
9:00 p.m. - 11:00 p.m.  
**Tuesday**  
8:30 a.m. - 5:30 p.m.  
9:00 p.m. - 11:00 p.m.  
**Wednesday**  
8:30 a.m. - 5:30 p.m.  
9:00 p.m. - 11:00 p.m.  
**Thursday**  
8:30 a.m. - 11:00 p.m.  
**Friday**  
8:30 a.m. - 5:00 p.m.  
**Saturday**  
Closed  
**Sunday**  
2:00 p.m. - 10:00 p.m.

#### IBM LAB SLC 134

**Monday**  
8:30 a.m. - 12:30 a.m.  
6:30 p.m. - 11:00 p.m.  
**Tuesday**  
8:30 a.m. - 4:30 p.m.  
6:30 p.m. - 11:00 p.m.  
**Wednesday**  
8:30 a.m. - 2:00 p.m.  
4:00 p.m. - 11:00 p.m.  
**Thursday**  
8:30 a.m. - 2:30 p.m.  
4:30 p.m. - 11:00 p.m.  
**Friday**  
11:00 a.m. - 7:00 p.m.  
**Saturday**  
12:00 p.m. - 4:00 p.m.  
**Sunday**  
2:00 p.m. - 10:00 p.m.



Old and new get together

## Alumni, Blue-Gold games a big hit

by Randy Rice

Old and new got together last Saturday for a fun-filled day of Colonel football.

Starting the day off was the annual Blue-Gold Game. The Colonels were split into two teams as a tune-up for Lebanon Valley. Offense was the word of the day as both teams combined for 33 points.

With less than one minute to go in the game, the gold squad stuffed one over from the one-yard line to preserve a hard-fought 30-23 victory and spoil the blue team's hope for a comeback.

After the game came the alumni's turn to relive

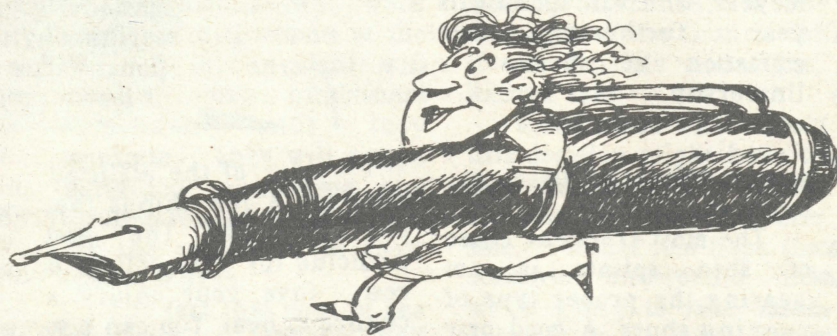
their glory days, as Wilkes presented its first ever alumni flag football game.

What the alumni lost to Father Time, they more than made up for in heart and desire. As former stars from odd-year graduations played stars from even-year graduations in a hard-fought battle. At the end of a hot day, the score read 6-0 in favor of the odd-year graduates.

The very successful alumni game gave former Colonels a chance to renew old acquaintances, to get to know some of this year's Colonels, and to step on the gridiron for Wilkes College once again.



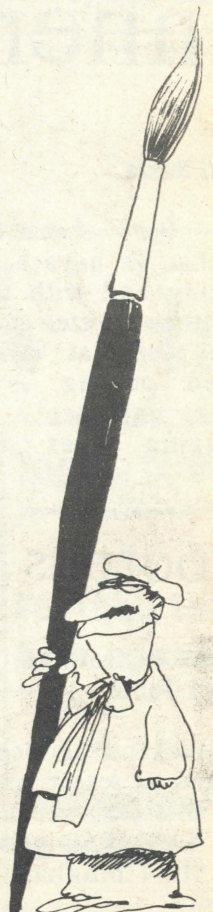
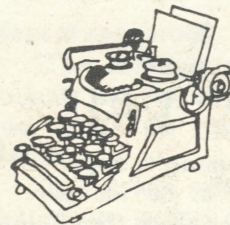
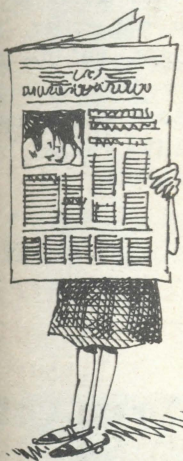
The 1985 Wilkes College Soccer Team has begun their fall season.



### The Beacon needs:

**News Reporters  
Feature Writers  
Photographers  
Artists  
Astrologers**

**Do you fit into one or more of these categories? *Then join.***



provides  
degrees.  
tion and  
Other  
business  
applied  
growing

ce. With  
ches the  
amidst

LAB  
C 134

nday

- 12:30 a.m.

- 11:00 p.m.

esday

- 4:30 p.m.

- 11:00 p.m.

nesday

- 2:00 p.m.

- 11:00 p.m.

ursday

- 2:30 p.m.

- 11:00 p.m.

riday

- 7:00 p.m.

aturday

- 4:00 p.m.

unday

- 10:00 p.m.



## New hockey coach

### She's one sharp lady

by Stacey Baldwin

The Lady Colonels hockey team has an edge on things this year. With new attitudes, new players and a new coach, the team has high hopes for its upcoming season.

Coach Eileen Sharp comes to Wilkes-Barre from Northfield, Minnesota, after coaching and teaching at Carleton College for six years.

At Carleton, an academically competitive school of 1,750 students, Sharp was the women's field hockey and basketball coach. She also taught physical education and was the athletic trainer there.

When asked, "Why Wilkes?" Sharp smiled and said, "I liked what I heard about the administration and their support of athletics and their desire to make the school better known both academically and athletically."

Sharp is a strong believer in athletics and finds it an important factor in an institution such as Wilkes. At Wilkes she finds an emphasis on academics as well as on athletics.

Another reason for her move east was that she only had one year left at Carleton and was eager to move to an area where field hockey is

played more competitively and with more skill.

Sharp left her Carleton players with a 12-7-1 record last year. Her overall record boasts 68 percent wins and 32 percent losses after five years there.

This year, Sharp faces a rebuilding job and is enthusiastic about leading the stickers to victory. She just bought a house in Plymouth and is happy so far.

Sharp adds, "I am enjoying my team. The people I have met are good to

me and are very supportive.

She also commented that the Wilkes community has been receptive as well.

Sharp replaces Gay Meyers, who will spend this year furthering her education at Bloomsburg University.



## Runners beware

by Bill Buzza

With the beautiful weather that we have been experiencing and with the current fitness craze, more and more people at Wilkes have been putting down their books and lacing up their jogging shoes. One

ailment common to most joggers is shin splints. Although not very serious if taken care of, this injury is extremely painful.

Shin splints are caused by the constant pressure of the runner's feet pounding on the running surface. This immense force causes the muscle to separate from the

bone in the area between the ankle and the knee.

The most frequent cause of shin splints is not wearing the proper type of running shoes. A good pair of running shoes will cushion your feet and help relieve the pressure on your shins. Also, running down hills creates much more pressure on your legs than running on level ground. To save your legs, cut down on the decline running.

If this advice has come to you too late and you are

already one of the afflicted, here are a few things that you can do. The best medicine for shin splints is rest. Give your injury a chance to heal. You can also apply ice to the injured area. This will retard the swelling and also make it feel much better.

A helpful exercise to strengthen the muscle covering the shin is to sit on the floor with your legs straight. Place your feet flat against the wall and flex your foot towards your knee.

Finally, if you must wrap your legs tightly and comfortably. This will give some added support.

Following these hints will not guarantee that you will not suffer from shin splints. But this advice will give you a much better chance of staying a happy healthy runner. Enjoy your workouts!

## SUNY tournament

### Booters drop pair

by Frank Wanzor and Mark Tobino

The Wilkes College soccer team opened its season on a sour note this past weekend by losing both of its games in the SUNY-Binghamton tournament.

On Saturday, the Colonels were pitted against Binghamton. The Colonels put up a good battle in the 95 degree heat, but

Binghamton's superior size proved to be too much for the Colonels as they fell 4

On Sunday the Colonels played SUNY-Oswego in the consolation game. Wilkes played a better style of soccer and controlled play for much of the game, but the Colonels were unable to find the net and came up on the short end of a 1-0 score.

The soccermen open their home schedule today against Delaware Valley.



## NOTICE

Any individual interested in becoming the team statistician for the Wilkes College football team is asked to contact Dave Gayeski, Sports Information Director, at extension 444. Individuals must possess an excellent knowledge of football and be available on Saturdays.

This year's Colonels basketball team promises to be one of the most exciting in the school's history. If you would like to be a part of this excitement, here's your chance! The team is now looking for student managers, and anyone interested should contact Coach Martin in the bookstore for more details.



Vol. XX

St

by Br

Reside  
have so  
about.

The  
Council v  
lift cert  
had bee  
residents

The  
placed on  
the res  
unapprov  
February

"They  
unregist  
they wer  
their pa  
Because  
residence  
individual  
punished  
dean of st

Corne  
ex-Inter-  
Council  
explained  
Council's  
quarter-  
sanction  
Every re  
have a c

M



Phot