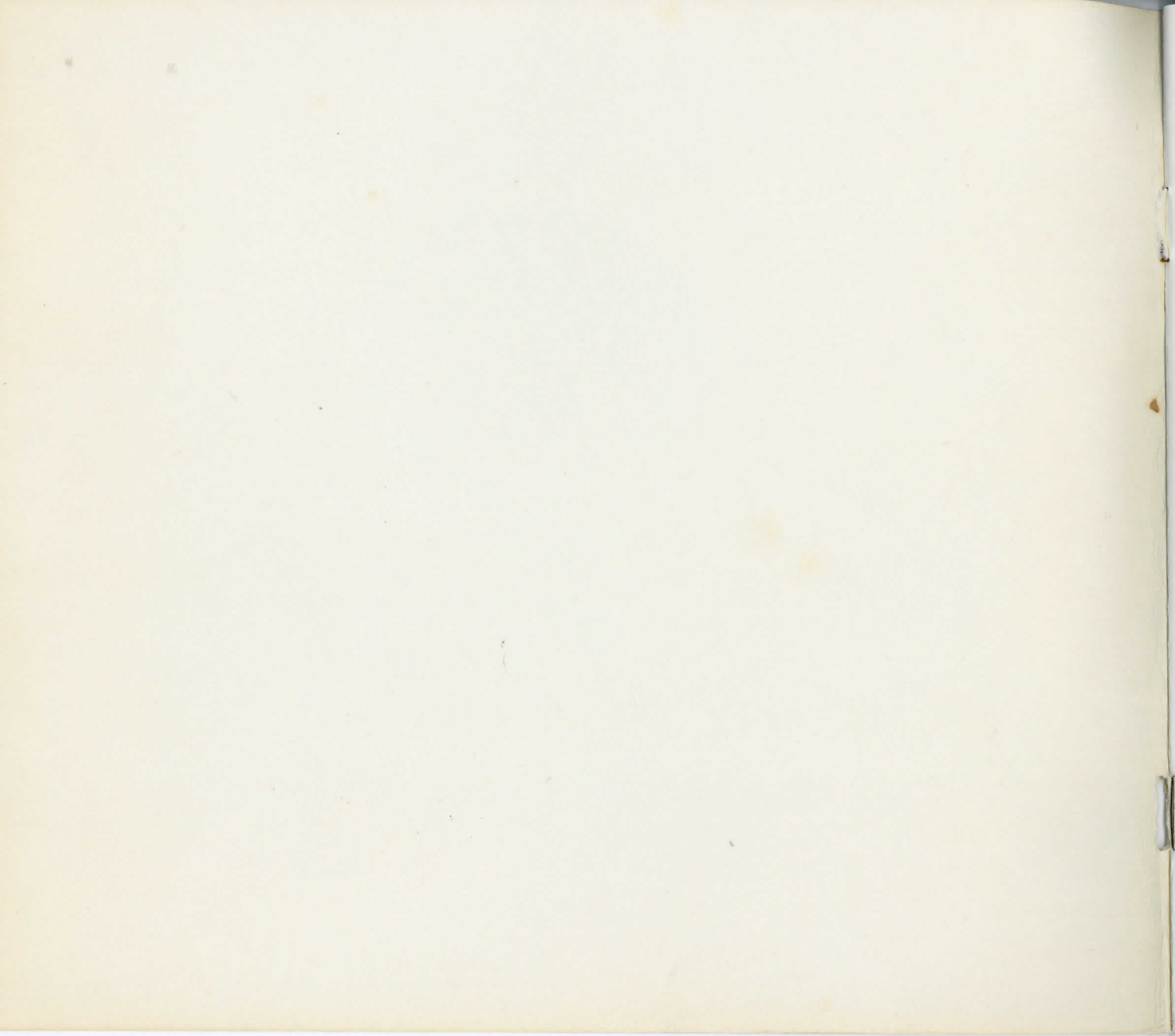




WILKES COLLEGE ARCHIVES  
Eugene Shedden Farley Library

BICENTENNIAL EXHIBITION

SORDONI ART GALLERY 1976



PHOTOGRAPHIC HISTORY OF HARD COAL MINING IN NORTHEASTERN PENNSYLVANIA

WYOMING HISTORICAL AND GEOLOGICAL SOCIETY COLLECTION

RALPH E. DeWITT

WYOMING HISTORICAL AND GEOLOGICAL SOCIETY COLLECTION

Anthracite coal, the land, and its people have been a prime source of energy in these United States and an influencing factor in its economic development as an industrial nation. Today, with the kaleidoscopic changes in energy sources, the land and its people are our heritage.

People came from all parts of Europe in search of economic advancement, bringing with them backgrounds of varied cultures that have produced and strengthened the character of our local area: the long, hard struggle of the miner to maintain his dignity, to improve his lot in life, to insure his rights and better working conditions led to the formation of the first labor union in the United States.

This Bicentennial Exhibition is a photographic record of these changes.

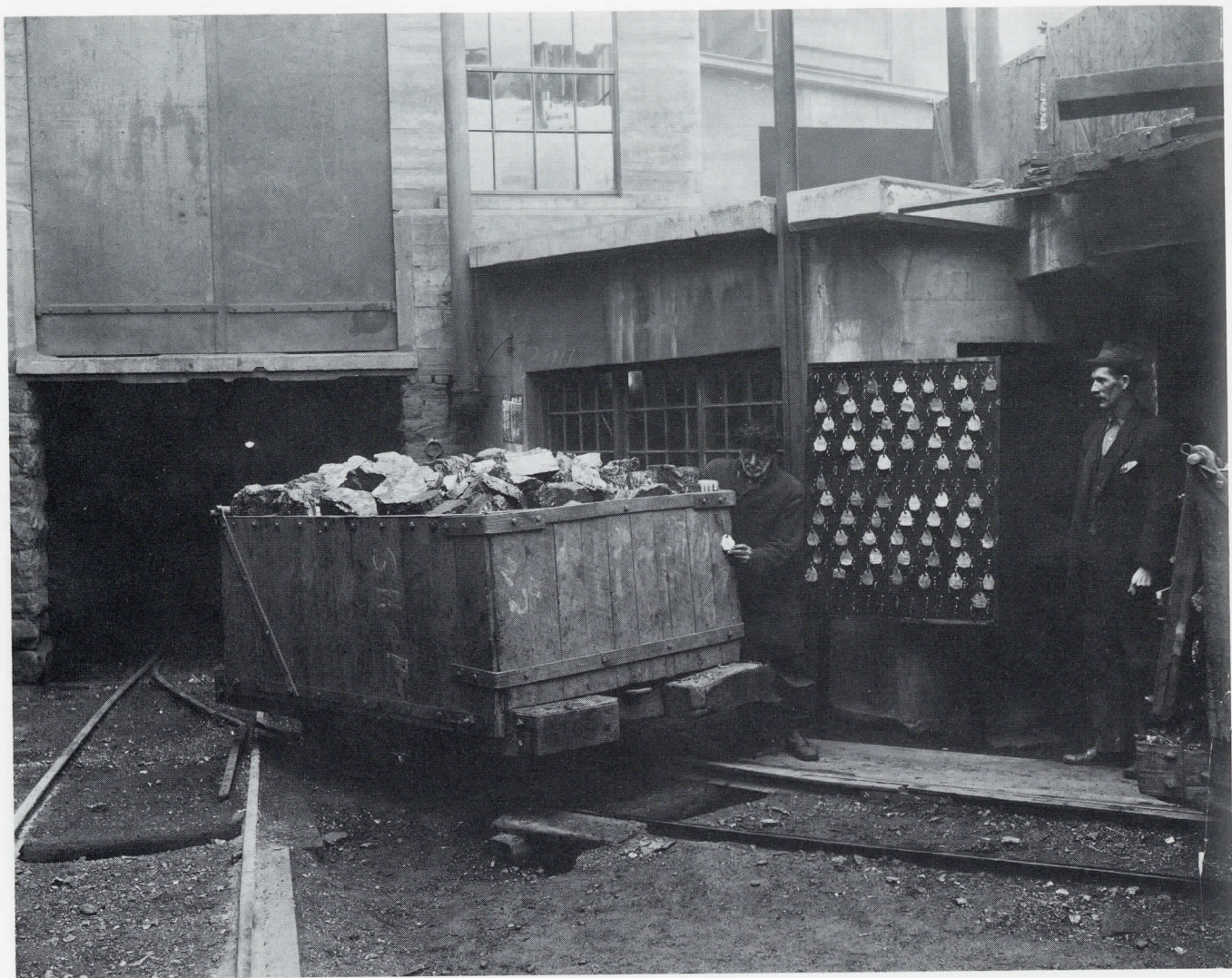
Photographs of the early years are on loan from the Wyoming Valley Historical and Geological Society collection, showing the mines and collieries in their growth and expansion years.

The collection of photographs by Mr. Ralph E. DeWitt depicts the era of coal from the early 1900s to the late 1930s with emphasis on mine machinery and the homes in which the miners lived.















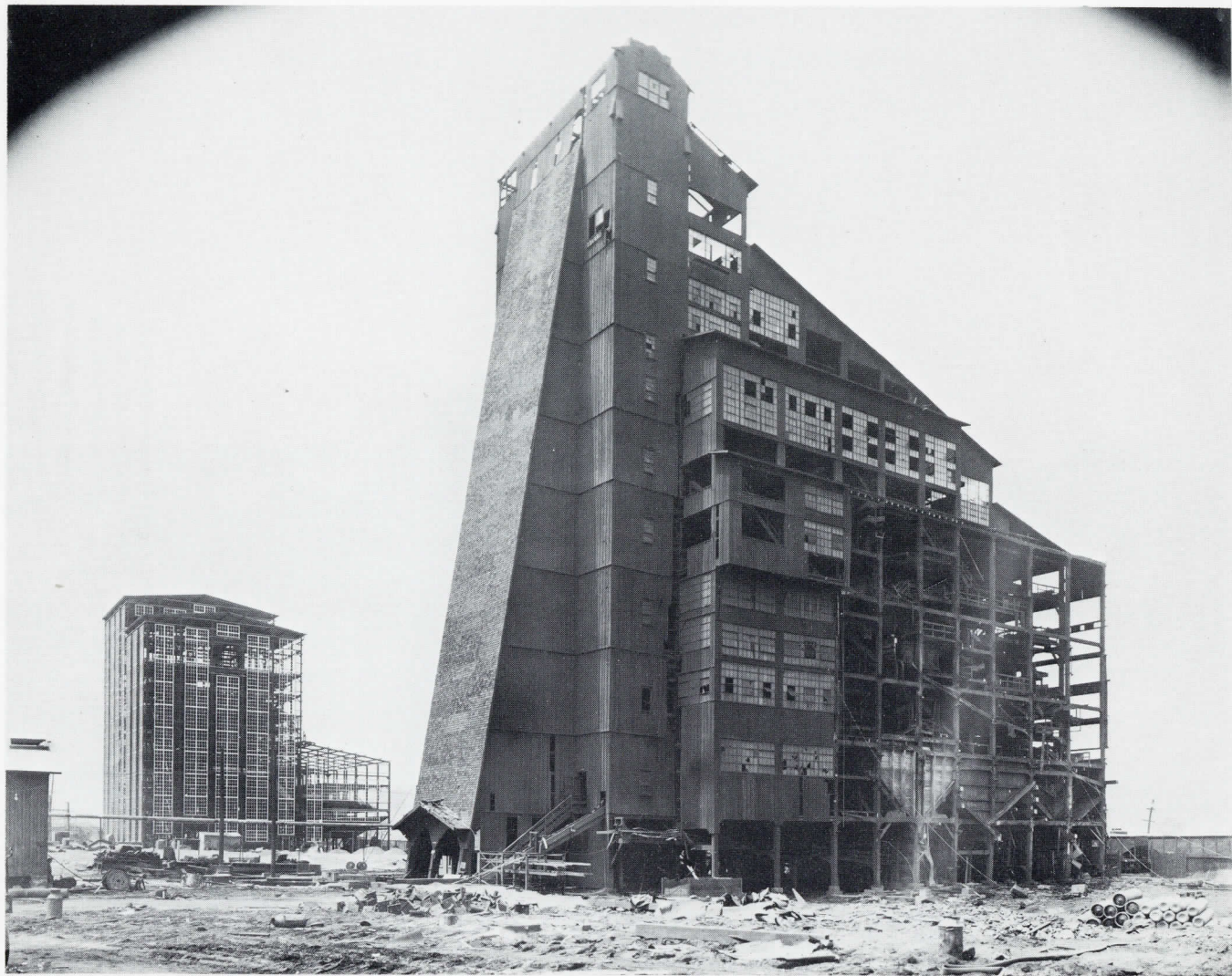






RALPH E. DeWITT

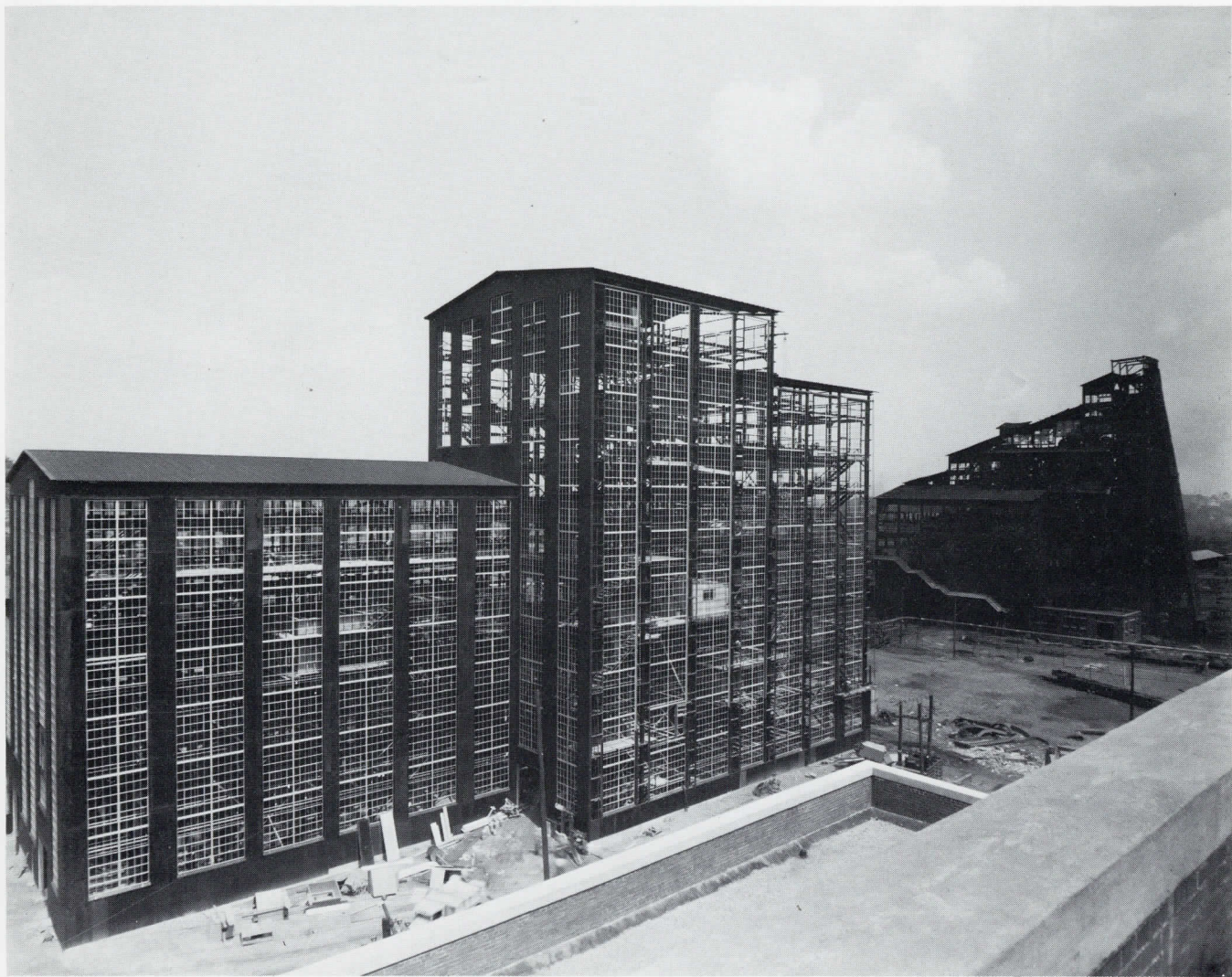


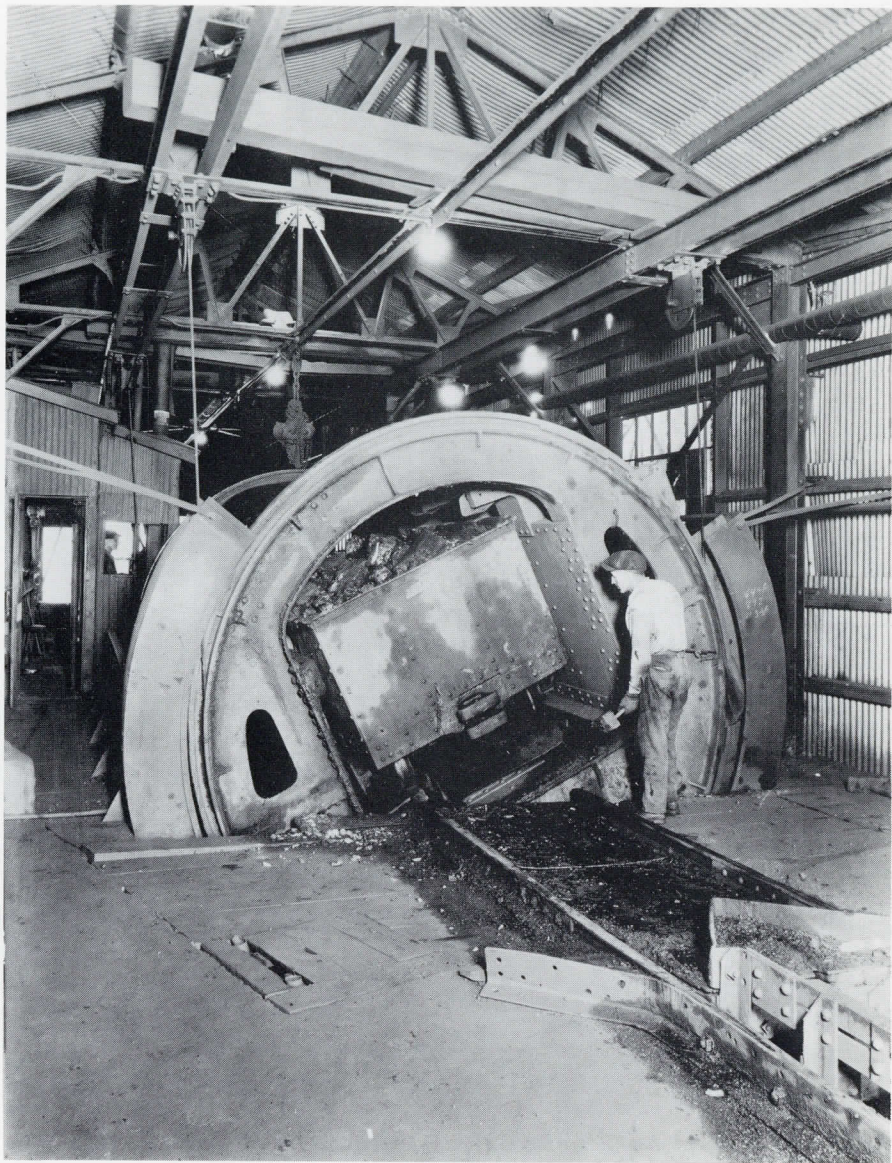














ROAD 249A CHA. 31 PETTEBÖNE B.P. + 63' OUT (HA), SHOT,  
SHOWING PROPS PLACED ABOUT THE YEAR 1912, LOOKING S.W.









WYOMING HISTORICAL AND  
GEOLOGICAL SOCIETY COLLECTION  
*Cover* — BREAKER BOYS' FOOTBALL TEAM  
*Location:* Kingston  
*Date:* 1920

MINE CREW  
*Location:* Unknown  
*Date:* 1917

MINE CREW  
*Location:* Unknown  
*Date:* 1920

BATHROOM  
*Location:* Unknown  
*Date:* 1916

MAN STANDING BY COAL WAGON  
*Location:* Unknown  
*Date:* 1916

MULE-DRAWN FIRST AID WAGON  
*Location:* Unknown  
*Date:* 1917

REAR OF HOME  
*Location:* Edwardsville  
*Date:* 1916

REAR OF HOME  
*Location:* Edwardsville  
*Date:* 1916

GARDEN  
*Location:* Pringle  
*Date:* 1917

PLAYGROUND  
*Location:* Edwardsville  
*Date:* 1919

RALPH E. DeWITT

HAZLETON SHAFT COLLIERY  
*Location:* Hazleton  
*Date:* 1932

MAXWELL COLLIERY  
*Location:* Ashley  
*Date:* 1940

COMPANY HOUSES  
*Location:* Wilkes-Barre  
*Date:* 1935

FAN HOUSE, HENRY COLLIERY  
*Location:* Plains  
*Date:* 1937

HUBER COLLIERY  
*Location:* Ashley  
*Date:* 1940

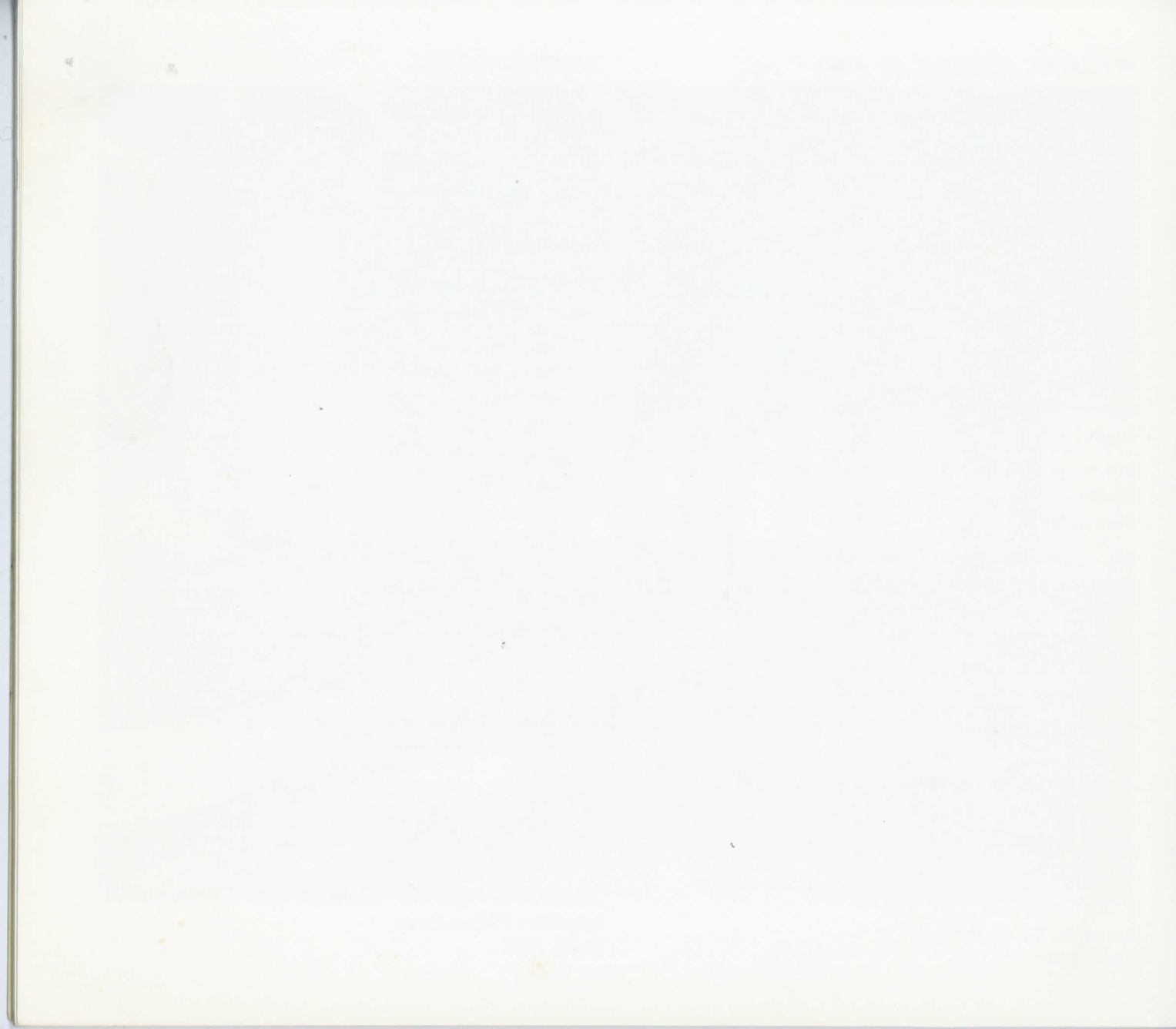
ROTARY DUMP, HUBER COLLIERY  
*Location:* Ashley  
*Date:* 1945

MINE PROPS  
*Location:* Wilkes-Barre  
*Date:* 1912

INTERIOR VIEW OF McCLINTOCK HOME  
*Location:* Wilkes-Barre  
*Date:* 1951

MALTBY COLLIERY  
*Location:* Swoyersville  
*Date:* 1929

INTERIOR VIEW OF MINERS NATIONAL BANK  
*Location:* Wilkes-Barre  
*Date:* 1969







**SORDONI ART GALLERY**

STARK LEARNING CENTER • 150 SOUTH RIVER STREET

WILKES COLLEGE • WILKES-BARRE, PENNSYLVANIA 18703