

BBC

D. Morgan

digitize







October 12, 1994

Memo From: **BETSY B. CONDRON**
Director of Community Relations

Hi Stan —

These are the paintings given to Wilkes in 1983 by Dorothy R. Morgan. They are spread around campus now, but should be recorded. Many are in Werkesser Hall.

There are several photo's in the album I showed you - (album resides in my office, but perhaps it should come to you or?) — Betsy



WILKES COLLEGE WILKES-BARRE, PENNSYLVANIA 18766
PHONE (717) 824-4651

October 12, 1994

Memo From: **BETSY B. CONDRON**
Director of Community Relations

Hi Stan —

These are the paintings given to Wilkes in 1983 by Dorothy R. Morgan. They are spread around campus now, but should be recorded. Many are in Weckesser Hall.

There are several photo's in the album I showed you - (album resides in my office, but perhaps it should come to you or?) — Betsy



WILKES COLLEGE WILKES-BARRE, PENNSYLVANIA 18766
PHONE (717) 824-4651

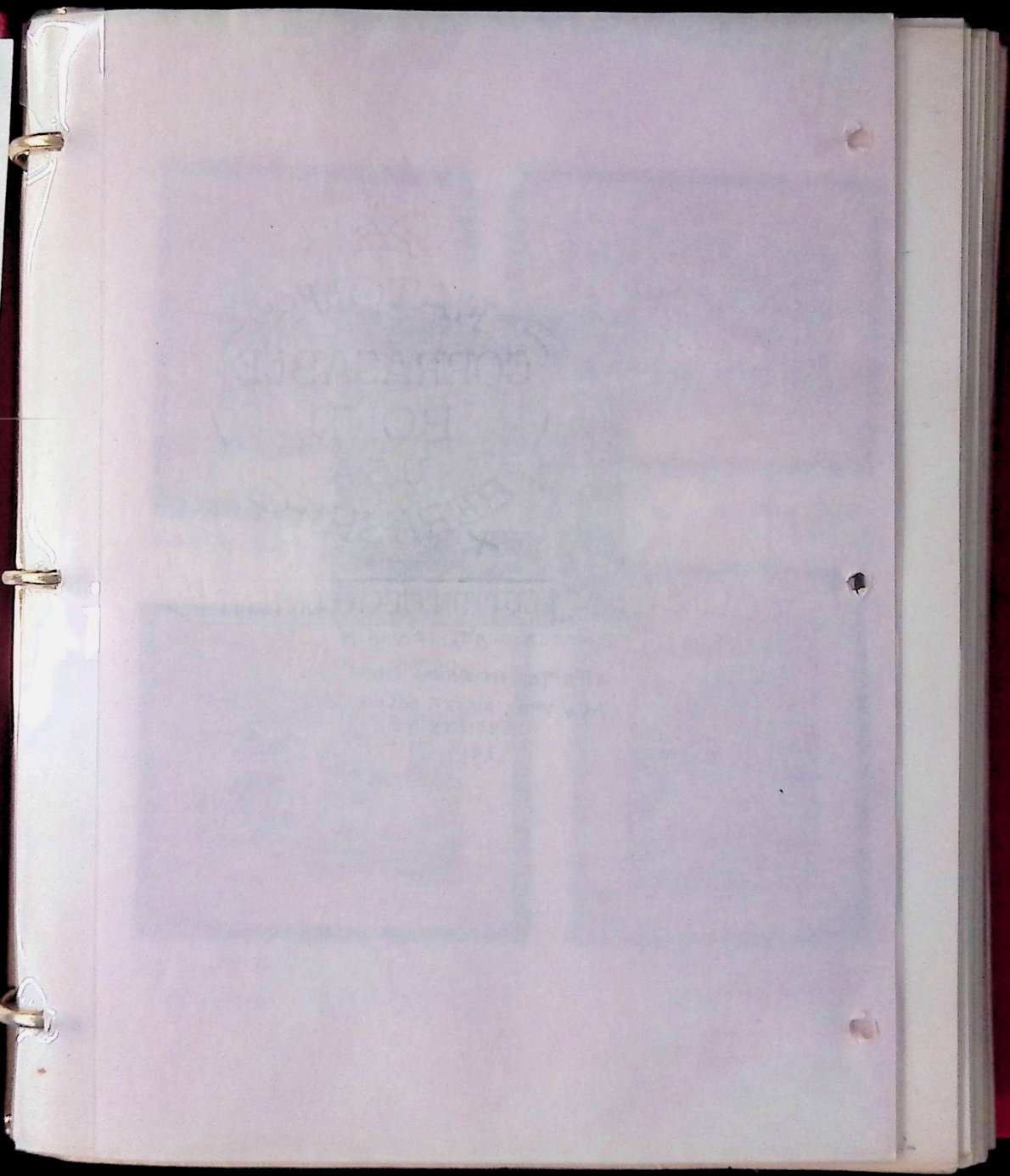
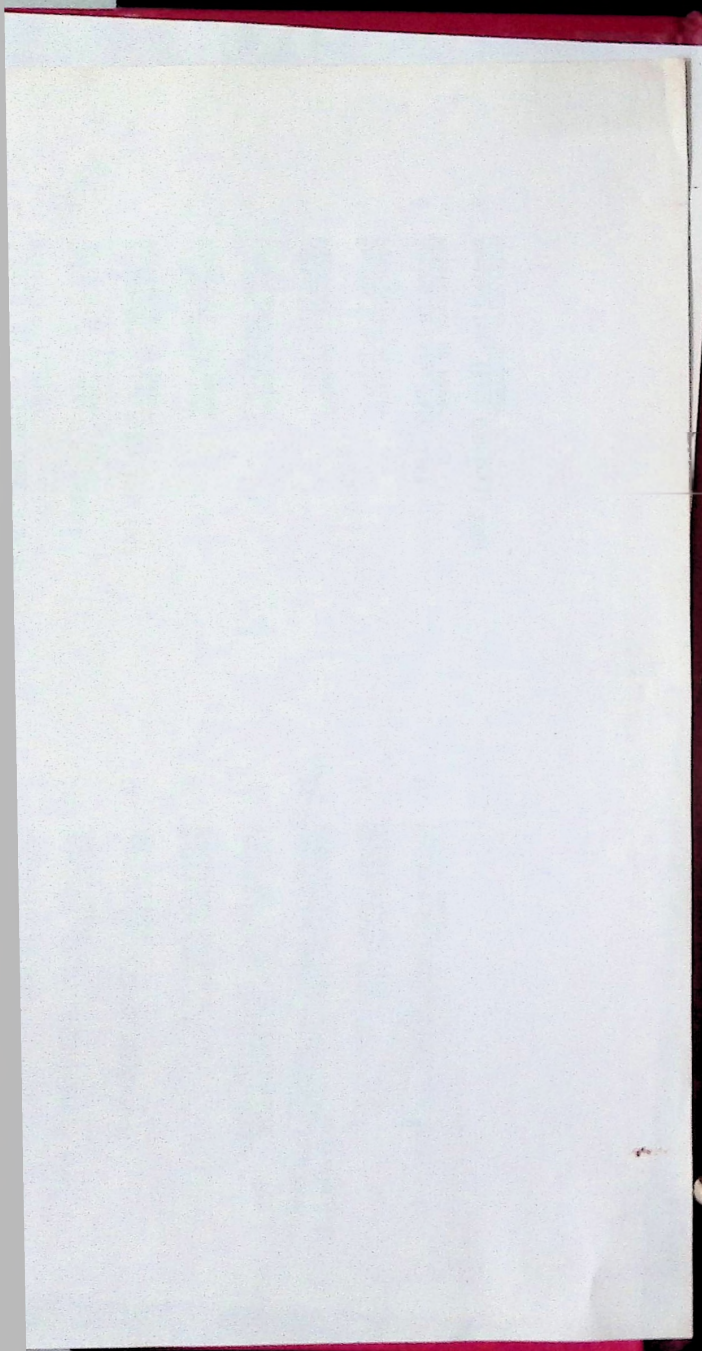
Betsy 887-0898
til 6:00

WORKS BY DOROTHY R. MORGAN

Dorothy Morgan, artist and Wilkes-Barre' native, has recently given Wilkes College a collection of her watercolors and pen sketches, depicting scenes of Wyoming Valley. We are pleased to present this informal exhibit of her work.

OFFICE
RETURN

1. Suddenly It's Spring, (West Side), 1966
Watercolor on paper
2. Harry E. Colliery, n.d. >BBP
Watercolor on paper
3. Wilkes-Barre' From Route 309, 1962
Watercolor on paper
4. Company House, n.d.
Watercolor on paper
5. Diamond Street, n.d.
Watercolor on paper
6. Larksville, n.d.
Watercolor on paper
7. By The Culm Pile, n.d.
Watercolor on paper
8. Spring in Kirby Park, 1969
Watercolor on paper
9. Ramshackled, (Back Country), 1964
Watercolor on paper
10. In Our Valley, (Luzerne), n.d.
Watercolor on paper
11. Osterhout Library, Wilkes-Barre', n.d.
Ink on paper
12. Luzerne County Court House, n.d.
Ink on paper
13. Anthracite Area, n.d.
Watercolor on paper
14. Luzerne County, "Anthracite Area", n.d.
Study for In Our Valley, Luzerne
15. ~~The Meeting House, Forty Fort, Pa., n.d.
Watercolor on paper~~ to Betsy Bell
16. Miners' Homes After Hours, 1959
Watercolor on paper
17. Dorrance Colliery, Anthracite Area, n.d.
Ink on paper





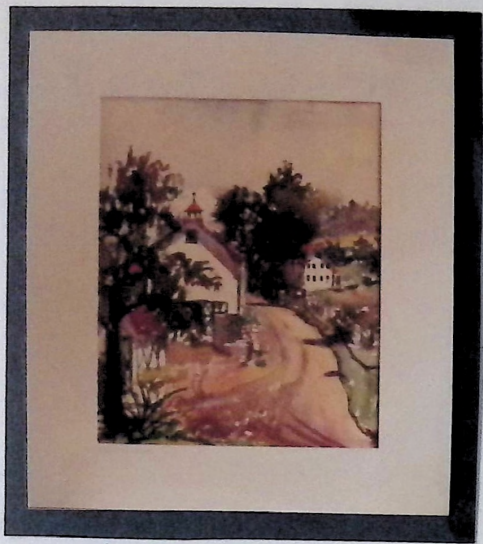
D. MORGAN - AGE 19 YEARS
ACCEPTED IN ANNUAL SHOW
NEW YORK WATER COLOR
SOCIETY
1919



"Country Road"



"Up on the Hill" ^{or} "after Hours" gave to



"Country Road" _____



"Industry" _____ Wyoming Valley
owned by Bob & Sylvia



"Up on the Hill" _____ Wilkes-Barre
"or
"after Hours" gave to Wilkes College
Nov. 1983



"The Heights" _____ Wilkes-Barre
gave to King's College. Ned Wilkes
collection
1974

YEARS
HOW
LOR



"Willow Tree in Spring" — Huntsville
gave to Catherine Younkin



"Harry E. Colliery" Luzerne
gave to Wilkes College
Nov. 1983



"A Company House" — Wilkes-Barre
gave to Wilkes College
Nov. 1983



"Diamond Street" — Swyersville
gave to Wilkes College
Nov. 1983



"The Osterhout Library" — Wilkes-Barre
copy owned by Miss Estes
owned by the Munsons



"The Old (



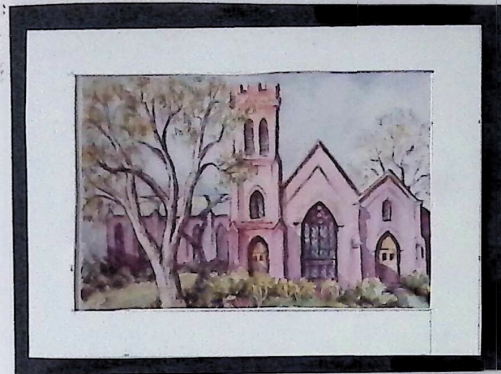
"Sycamore Tree in March" — Ua.



"Rhododendron



"Harry E. Colliery" Luzerne
gave to Wilkes College
Nov. 1933



"The Osterhout Library" Wilkes-Barre
copy owned by Miss Estes
owned by the Munsons



"The Old Patriarch" Buck Hill



"Diamond Street" Swagesville
gave to Wilkes College
Nov. 1933



"Sycamore Tree in March" U.S.



"Rhododendron" Buck Hill
owned by Ruth & Warren Goff



"Spanish Moss" — Florida
given to Peter Run



"Palms in St. Augustine" Florida



"Bamboo" — Florida



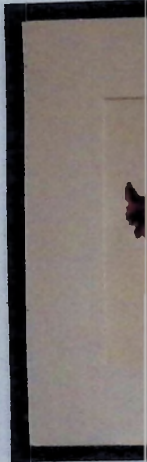
"A Jungle Garden" — Florida
copy owned by
Carol Connely



"From my Garden" — Penna.



"Apple Trees in Summer" — Buck Hill
owned by Barbara Schram



"Late Sun"



"Palms in St. Augustine" Florida



"A jungle garden" Florida
copy owned by
Carol Connely



"From my Garden" Penna.



"Old Bark" Penna.
gave to Pine Run



"Apple Trees in Summer" Buck Hill
owned by Barbara Schram



"Late Summer flowers" Penna.
owned by Mary Dixon
copy " by Ginnie Brace



"Berks County" — Penna.
owned by Edith



"Milwaukee" — Penna.
owned by The MUNSONS



"A Day in April" — Penna.
Edith Harris bought this at myle's auction
5/24



"Rugged Mountains" — Penna.
given to Pine Run



"Monterey Cypress Trees" — Cali.
owned by Wobley Shirk



"The Coast of Norway" — "A J
given to Wyoming Seminary
Day School.



anna. Edith
"Milwaukee" — Penna.
owned by The Munsons



a. na
"Rugged Mountains" — Penna.
given to Pine Run



"Monterey Cypress Trees" — Cali.
owned by Wabley Shirk



"Icelandic Poppies" — Victoria



"The Coast of Norway" —
given to Wyoming Seminary
Day School.



"A Touch of Spring" —
owned by Lila



"In Our Valley" — Luzerne
gave to Wilkes College
Nov. 1983



"Apple Trees in March" — Poconos



"Kirby Park" — Kingston
gave to Wilkes College
Nov. 1983



"Ramshackled" — Back Country
gave to Wilkes College
Nov. 1983



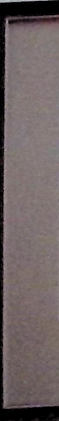
"A Farm" — Vermont
gave to Dr. + Mrs. Clemens
1974



"A Windy Day" — Vermont
Wyo. Sem. Way Schuy



"Judy"



"The"



"Apple Trees in March" — Poconos



"Ramshackled" — Back Country
gave to Wilkes College
Nov. 1983



"A Farm" — Vermont
gave to Dr. + Mrs. Clemens
1974



"Judy's House" — Dorset, Vt.
gave to Hank Munnay 1987



"A Windy Day" — Vermont
Wyo. Sem. — Way Schuy



"The Salt Box" — Salem, N.Y.
MINI COPY To Dr. + Mrs. Clemens
1974



"So dearly its Spring" - Wyo. Valley
2nd prize W.N.B. Show
given to Wilke College - Nov. 1983



"January Blizzard" - Kingston
given to Corkey Bergman
May 1985



"Up at East End" - Penna.
owned by Horace + Mary Kruse



"Early Wyoming Valley" -
Gave to Hubingers



"Vermont" - owned by Rev. + Mrs. Dickenson



"The Dormer Window" - Cape Cod
Lind bought



"Spring"
original



"April"



"January Blizzard" - Kingston
gave to Corkey Berdeman
May 1985



"Early Wyoming Valley" -
Gave to Hubingers



"Vermont" - owned by Rev. + Mrs. Dickenson



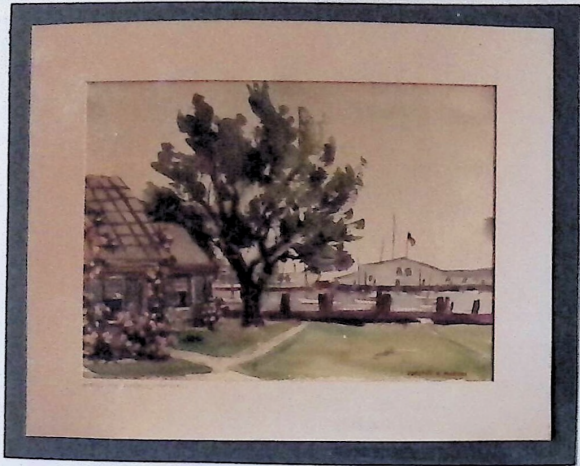
"Spring" - gave copy to 44 artists
original - gave to Wyoming Sem. Day School



"The Dormer Window" - Cape Cod
Painted by [unclear]



"April" - Clark's Summit
gave to Betty Anne Getzen danner
Pine Run



"The Wharf" — Nantucket
By Roy Willcox



"Nantucket Island" —
Mrs. Calder bought this at my clearance sale



"The Old Dock" — Cape Cod



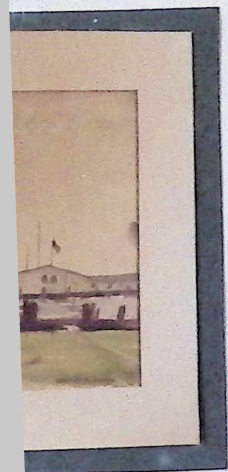
"Grey Shingles" — Nantucket
Gave to Shirley Davidson
duplicate to David Clemens
"Wyo. Sem. Roy Schott"



"Fog" — Nantucket
Painted by Werts



"The Marshes" — West Yarmouth
Jim & Peg Wirt



Nantucket.
By Peg & Ray Werts



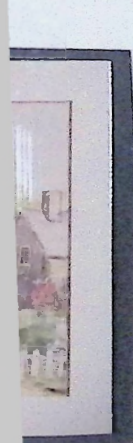
"Nantucket Island" _____
Mrs. Calder bought this for my clearance sale



"The Old Dock" _____ Cape Cod



"The Old Ice House" _____ Va.



Nantucket
Davidson
& Clemens
by Johnson



"Fog" _____ Nantucket
By Peg & Ray Werts
Painted by Werts



"The Marshes" _____ West Yarmouth
Jim & Peg Werts



"Nobska Light" _____ Woods Hole
gave to Red Morgan
Jan. '55



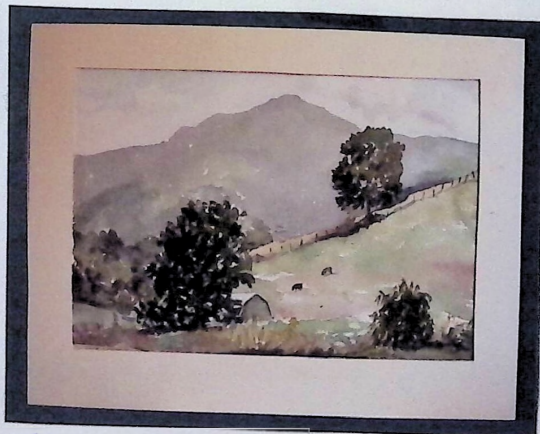
"Canada Lillies" — N.C.
owned by Kathryn Kramer



"In the Blue Ridge" — N.C.



"Mountains" — North Carolina
Dwight Bolnis



"Lester's Barn" — N.C.
owned by Betty Meyer Green



"The Charlevoix Coast" — Quebec
given to Pine Run



"The Turkey Farm" — Quebec
given to Pine Run



"In the Blue Ridge" — N.C.



"The Charlevoix Coast" — Quebec.
given to Pine Run



"In the Poconos" — Penna.
Rev. + Mrs. Dickenson



"Lester's Barn" — N.C.
owned by Betty Maga Jones



"The Turkey Farm" — Quebec
given to Pine Run



"Rural Quebec" — Canada
Pettig + Jackson Boynton



"Molly Maguire Breaker" — Penna.
copy to Louis Becklin
original - Kings College (gift)
1974



"In a Mine Patch" — Penna.
gave to Kings College
Red Welles' collection
1974



"Owe Court House" — Penna.
gave to Welles Collection
Kings College 1974



"A Company House" — Echeley
gave to Welles Collection
Kings College 1974



"Cabot's Farm"

French Canada
Hubinger (gift)



"On the Road to Putney"

gave to Fellowship Room
1st United Meth. Church
1974



"In a Mine Patch" — Penna.
Gave to Kings College
'Red Waffles' collection
1974



"A Company House" — Easley
Gave to Welles Collection
Kings College 1974



"Cabots Farm"

French Canada
Hubinger (Gift)



"Under the Elm Tree" Vermont
Gave to Hubingers



"On the Road to Putney"

Gave to Fellowship Room
1st United Meth. Church
1977



"Vermont"



"Walt's Trout Stream" owned by Mike
Robinson



"Quebec Province"



"Along the Saint Lawrence"
owned by Mr. Thomas Helper



"Roadside Chapel" Quebec
Herbert Bergstrom bought this at my clearance sale



"Matt's Barn" - Vermont
owned by Coppice
copy to Mike Bergman



Matt's "Old Hemlocks" Vermont



"Quebec Province"



"Matt's Barn" - Vermont
owned by Coppin
copy to Mike Bergman



"Matt's Willow Tree" Vermont
owned by Vise & Charlie Wolf



"Roadside Chapel" Quebec
Herbert Bergstrom bought this as my Christmas gift



Matt's "Old Hemlocks" Vermont



"The Village Garden", Grafton, Ver.
gave to Hubingers



"Grafton - Vermont" ^{gave to Hubingers}
gave to Mr. & Mrs. Conjalous, 1958



"Grafton" owned by Ralph Hazeltine



"Town Hill" ^{Pennsylvania}
gave to Hubingers



"The Sugar Maple" ^{The Broynton (Jude's)}
copy



"The Old Tavern" ^{Grafton}
gave to Whitney & Joan Landon
copy " " JILL



"Springtime by the Culm Pile"
^{owned by Wyoming National Bank}
(small copy sold to Martha Melhado)
copy gave to Wilkes - College
Nov. 1983



"Grafton" owned by Ralph HazelTine



"Town Hill"

Pennsylvania
gave to Hubingers



"Sunny and Warm" Fernanda Morgan



"The Old Tavern" Grafton
gave to Whitney + Joan Landon
copy " " JILL



"Springtime by the Culm Pile"
found by Wyoming National Bank
(small copy sold to Martha Nichols)
copy gave to Walker - College
Nov. 1983



"Summer's Over"
copy owned by
Christina + Maria



"Old Joy Inn" Virginia
owned by Betty Frank



"Prince Edward Island" owned by
Horace + Mary Kramer



"The Sole Survivor"

Local
(2nd Best landscape)
owned by Charles W. 5th
copy to Wyo. Sun. Day School



Wild Water Lilies Maine
owned by Mary Pignat



ANCIENT TREE



Jessie and Dot before

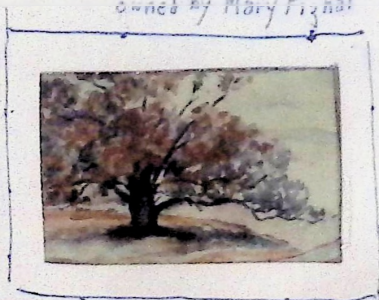




Prince Edward Island" owned by
Horace & Mary Kramer



Wild Water Lilies Maine
owned by Mary Piznar



ANCIENT TREE



Jessie and Dot before "our" Show.



Paintings Attract Many Visitors to Fiesta
DOTS *May 19, '72*



Brilliant sunshine helped attract hundreds of fiesta-goers to Public Square, as the 17th annual Fine Arts Fiesta got under way yesterday at noon. The clothesline exhibit of paintings by members of Wyoming Valley Art League attracted many visitors. Art League exhibit committee, Char- Zimmerman, Mrs. Leo n Schwartz and Al Fino, appear in the photograph with a number of volunteers who assisted in preparing the exhibit. Left to right: Julia Repa, Zimmerman, Fino, Marsha Drummond, Mrs. Schwartz, Mrs. Julia Girton, Mrs. Allen Hutchison, Mrs. William Schilling and Mrs. George Thomas. Fiesta exhibits were well attended on opening day. Fifteen exhibits and a total of 60 performances will be presented to the public free during the four-day fiesta, continuing through Sunday. (Photo by Ace Hoffman Studios)



"The Sentinel"



"Tree in Swayersville" Gave to Wyoming Seminary



"October" gave to first United Meth. church - W.B.



"Dusk in Maine" stolen from Bar Harbor



"Conjugalios" gave to first United Meth. church - W.B.

Visitors to Fiesta
May 19, '72



exhibits and a total of 60 performances will be presented to the public free during the four-day fiesta, continuing through Sunday.

(Photo by Ace Hoffman Studios)



"Tree In Swayersville" Gave To Holy Family Seminary



"October" gave to first United Meth. Church - W.B.



"Dusk in Maine" Gave to ^{Medical Center} from Bar Harbor



"Conyngsbans" gave to first United Meth. Church W.B.



"The Fallen Birch Tree" Maine owned by L. Silen



"The Boon Roofed House" Cape Cod owned by Werts



"The Road to Pictou II" Purchased by M. MULHADO 23 1977



Water Lilies given to Pine Run

Maine 1974



Copy of one

owned by Ellis K.T.
later by Linda Harris



from the Bethel Inn Gardens
given to Pine Run Maine 1974



Plucked from an abandoned garden Maine



24 DAY LILIES sent by DOYLESTOWN '77



Barn in Maine

1974



Vermont Barn purchased by Elly Ryder

Well



The Shed - Copy to Mary Parry 1977
original to Linda Harris



Lake at Pine Run

1977



974 Copy of one owned by Ellis K.T. Later by Linda Harris



Plucked from an abandoned garden Maine



Barn in Maine 1974



Vermont Barn purchased by Ellis Ryder



Well Shaded Wyo. Sem. Day School 1977



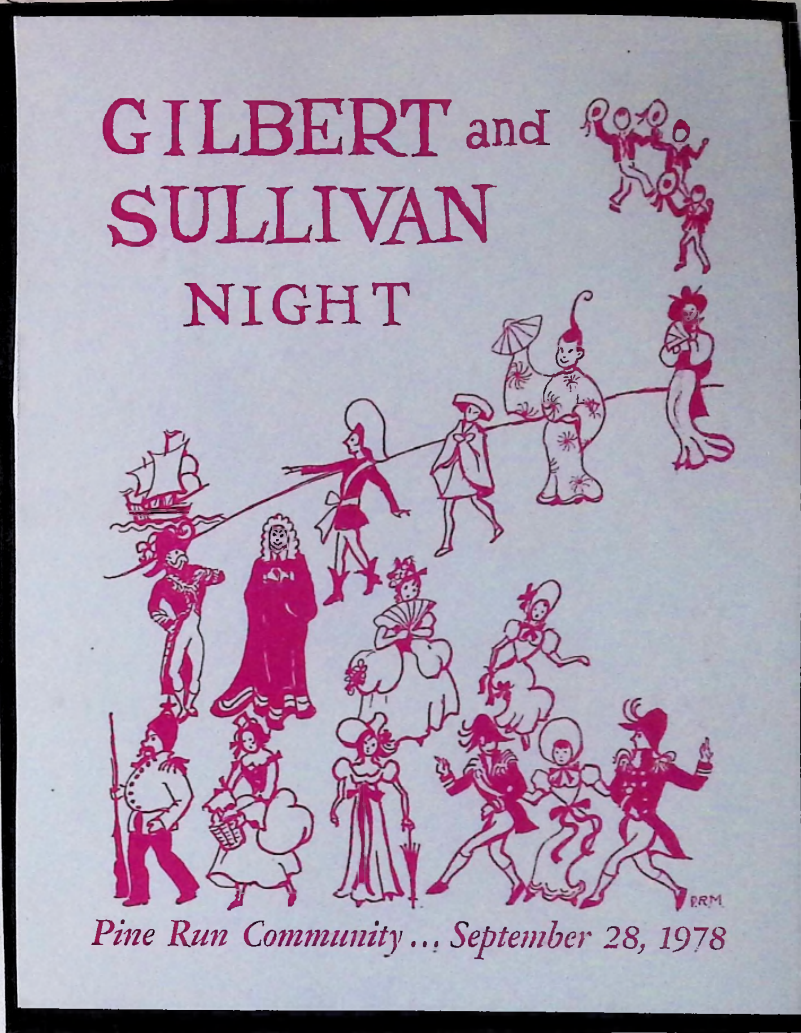
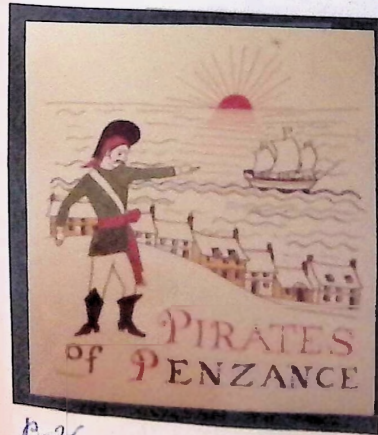
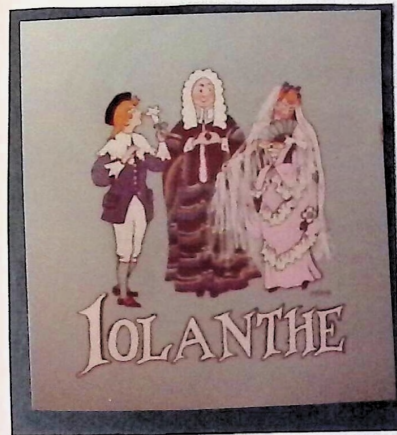
The Shed - Copy to Mary Parry 1977 original to Linda Harris



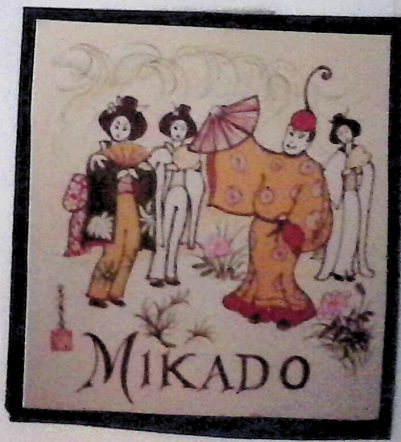
Lake at Pine Run 1977



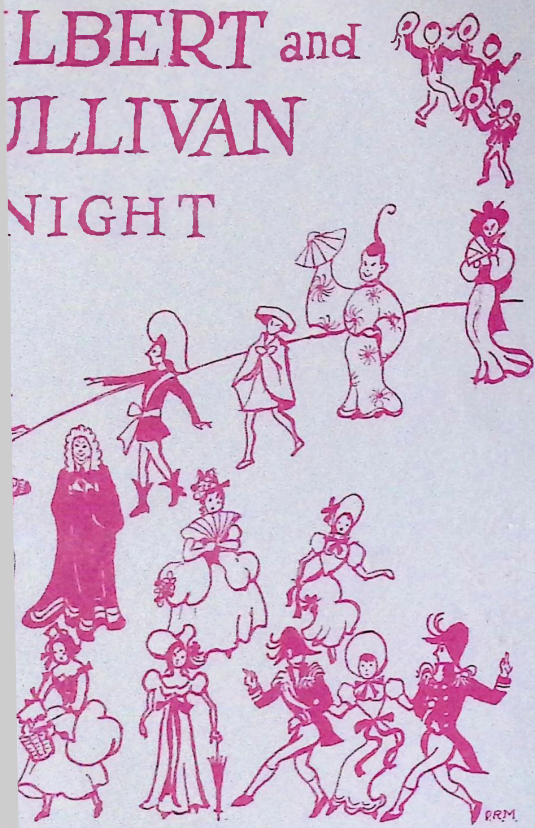
Window of the "Country Store" 1977
(Small travel picture + miniature paint
by brush + pad used)
P. 25



Posters and Menu
for Gilbert & Sullivan
night at Pine Run.
Arthur Wilkinson's
idea and direction!



ALBERT and
SULLIVAN
NIGHT

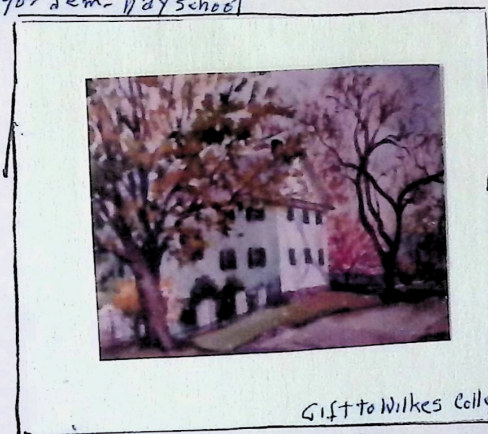


Community ... September 28, 1978

Menu
Sullivan
in River
Lisson's
direction!



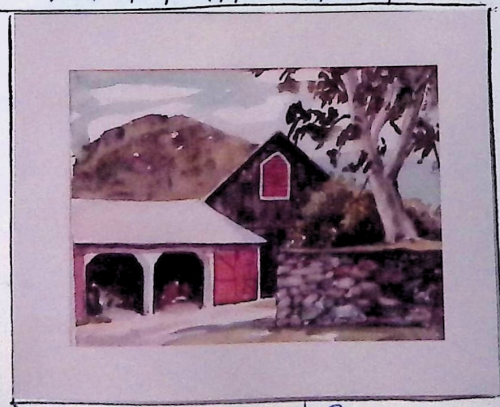
The Ponte Vecchio - Florence
Wyo. Sem. Day School



The Old Forty Fort Meeting



Larksville Gift to Wilkes



Vermont Barn



Composition -



Eleanor's shed in October
gift to Dwight Balwin



Basin Harbor Club



Hub in Winter *given Balwin*



Our view in snow storm



Weeping Willow, Ver.



Stoned by Ann Dagan

P. 36

gift to Sally Jordan 1985

7-2-80



Basin Harbor Club



Our View in Christmas - Pine Run
Wyo. Jan. 8th 1976



Given to Papa Rem
my painting of Pine Run Christmas



Our View in Snow Storm



My Exhibition comes in Craft Room
at Pine Run - 1976



Zadie's snapshot of Uncle's farm



Little



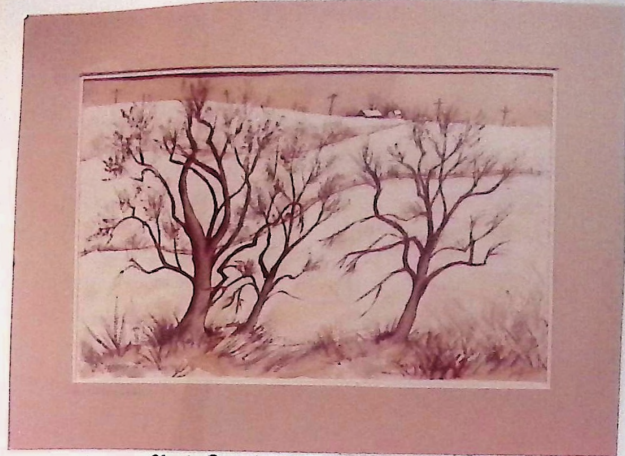
owned by Ann Dugan



My sketch for needle point ^{pillow} ~~pillow~~ for Alia Mardean's



two grand daughters



Old Sun + 2000 + hills + water



Magnolia Branch



"covered Bridge" owned by Mrs. Varley



Bacon Chapel at Grestahova
bought by Dorothy Kupke



← 1977 →

Exhibition in second
window of "Country
Store" my commercial
work in New York





Magnolia Branch



Been Chapel at Gjestahov
bought by Dorothy Kupke



← 1977 →

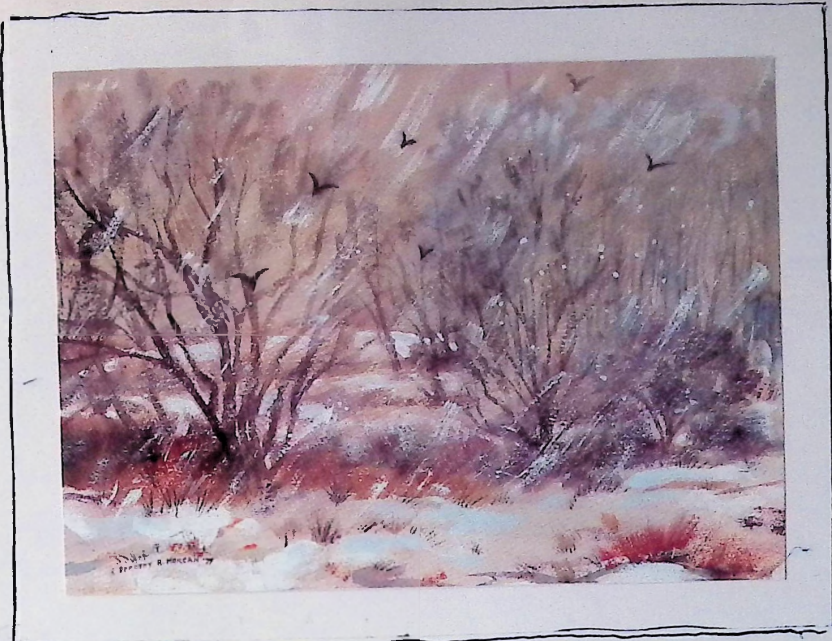
exhibition in second window of "Country Store" my commercial work in New York



VAN SANT'S HOME, DOYLESTONN GAVE TO MIDGE



GOODWIN HOME, NEW HOPE Gave to Sally



VIEW IN SNOWSTORM FROM OUR APARTMENT
Wyo. Sem. Day School CHRISTMAS CARD, 1984



TREE ON RIVER-BANK OPPOSITE
Attorney James Harris's office -
BOUGHT BY ETHEL THOMPSON



COVER FOR FEB. CHILD'S MAGAZINE

Bought by Ethel Thompson

P. 22

Picture
in Doyl



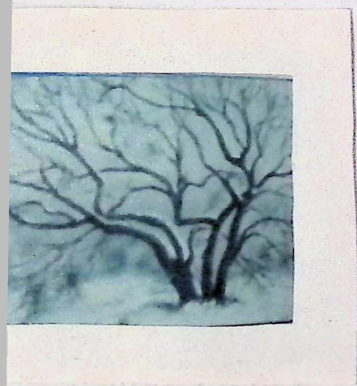
Chap

50th

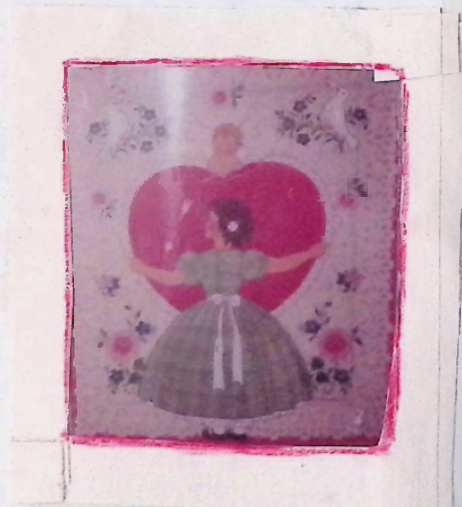
inu
whi
The
Ora
Incl
the a



N SNOWSTORM FROM OUR APARTMENT
Sem. Day Feb 1984 CHRISTMAS CARD, 1984



RIVER-BANK OPPOSITE
Mrs. Harris's office.
BOUGHT BY ETHEL THOMPSON



COVER FOR FEB. CHILD'S MAGAZINE

Bought by Ethel Thompson



Picture 1 painted of Midge's Home
in Doylestown — (just sold)

See p. 29



Picture 1 painted of
Sally + Werner Goodwins
Home in New Hope — (just sold)



See
P. 30

Chapel at Chestnuth
Bought by Frank Elliot



STORM COMING - BACK MT.
given to Pam Ray

50th Anniversary of Wilkes College — 1983

Pam Ray Show

Dorothy Morgan

invites you to a preview of Water Colors —
which are gifts to Wilkes College, Wilkes-Barre, Pa.
These are all scenes of that Anthracite coal area.

Craft Barn — November 15 + 16 — 10-5
AM PM

Included, will be other Water Colors, which with
the above gifts, will be shown later at the College

Clearance Sale

art work by
DOROTHY R. MORGAN
in the
Craft Barn
aug. 14 + aug. 15 10AM-3PM

proceeds will be given to a local
CHARITABLE FOUNDATION

Gave Parvee \$2730 from this sale
up to \$3000 return



Illustration



Illustration

ance
le

ork by
MORGAN
he
Barn

10AM-3PM

given to a local
FOUNDATION

30 from this sale
to library



Illustration



"When the Sandman Comes"
Illustration for poem by Kathlene Hunt
Gave to Osterhout Library
1985



Illustration



original gave to
Wyoming Seminary Day School

1985



SOME OF THE PAINTINGS
IN THE
CLEARANCE
SALE



BARBERM
Schram



836



SOME OF THE PAINTINGS
IN THE
CLEARANCE
SALE



BERNARD
Schran

MACHINES
K Helen Hagen DeWitt



CLEARANCE SALE



Center Tree (Sperry)



1985

Dorothy Morgan exhibits works at Pine Run community center

Pine Run, a life-care community located on Ferry Road in Doylestown Township, will host

an exhibit and sale of the works of Dorothy Morgan, Wednesday and Thursday, Aug. 14 and 15, from 10 to 3 p.m., in Pine Run's craft barn.

One-woman show at Pine Run

Dorothy Morgan, a well-known Pennsylvania artist and a resident of the Pine Run Community on Ferry Road in Doylestown, will exhibit some of her paintings at the Pine Run Craft Barn on August 14 and 15 from 10 a.m. to 3 p.m.

Morgan, a native of Wilkes-Barre, (where she became a charter member of the Wyoming Valley Art League,) is a graduate of the Pratt Institute in Brooklyn, New York, and the Boston School of Fine Arts. As a free lance artist, she specialized over the years in illustrations for children's books and textile linen and embroidery designs.

An early retirement allowed Morgan to devote herself to painting and traveling throughout the United States and Europe.

Her works have been exhibited in juried shows in Hazelton, Berwick, the Everhart Museum in Scranton and in Wilkes-Barre. Several of her works have been selected for permanent collections in public buildings in the Wilkes-Barre area.

For more information and directions, call the Pine Run Community at 345-9000, ext. 110.

Miss Morgan is a native of Wilkes-Barre, where she became a charter member of the Wyoming Valley Art League. A graduate of the Pratt Institute, Brooklyn, N.Y., and the Boston School of Fine Arts, she pursued a career as a freelance artist in New York City. Her commercial pursuits included specialization in illustrations for children's publications, as well as textile, linen and embroidery design. Following an early retirement, Miss Morgan devoted herself to painting and extensive travel, throughout the United States and Europe.

Dorothy Morgan's works have been exhibited in juried shows in Hazelton, Berwick, the Everhart Museum in Scranton and in Wilkes-Barre. Many of her works have been selected for permanent collections in public buildings in these locations. Additionally, the New York City Water Color Society has exhibited her works.

ARTS NOTES

Since moving to Pine Run, Miss Morgan's work has been included in numerous area exhibits, including one-woman shows at the Industrial Valley Bank in Doylestown, the Bucks County Bank in Dublin, and at Pine Run Community.

The upcoming exhibit and sale at Pine Run will include numerous works in various media, painted throughout the artist's lifetime. Admission is free and the public is invited. Information and directions: the Pine Run Community, 345-9000, extension 110.

August Mini-gallery

Lois Daday of Coopersburg will be the artist-in-residence during the month of August at the mini-gallery of the James A. Michener Branch of the Bucks County Free Library. Ms. Daday studied as a child with Dr. Walter Baum. She began working with watercolors approximately 10 years ago.

Recent exhibits include the Hotel Bethlehem, Valley Federal Bank and Merchants Bank.

PUBLICITY FOR CLEARANCE SALE



TREE AT PINE RUN
given to Mary Fulwell



DR. STETTLER - Headmaster
14 painting that I am giving



Dor, opening a gift from Dr. Stettler

ABK

Morgan exhibits works community center

An exhibit and sale of the works of Dorothy Morgan, Wednesday and Thursday, Aug. 14 and 15, from 10 to 3 p.m., in Pine Run's aft barn.

Miss Morgan is a native of Wilkes-Barre, where she became a charter member of the Wyoming Valley Art League. A graduate of the Pratt Institute, Brooklyn, N.Y., and the Boston School of Fine Arts, she pursued a career as a freelance artist in New York City. Her commercial pursuits included specialization in illustrations for children's publications, as well as textile, pen and embroidery design. Following an early retirement, Miss Morgan devoted herself to painting and extensive travel, throughout the United States and Europe.

Dorothy Morgan's works have been exhibited in juried shows in Hazleton, Berwick, the Everhart Museum in Scranton and in Wilkes-Barre. Many of her works have been selected for permanentlections in public buildings in these locations. Additionally, the New York City Water Color Society has exhibited her works.

ARTS NOTES

Since moving to Pine Run, Miss Morgan's work has been included in numerous area exhibits, including one-woman shows at the Industrial Valley Bank in Doylestown, the Bucks County Bank in Dublin, and at Pine Run Community.

The upcoming exhibit and sale at Pine Run will include numerous works in various media, painted throughout the artist's lifetime. Admission is free and the public is invited. Information and directions: the Pine Run Community, 345-90001, extension 110.

August Mini-gallery

Lois Dajay of Coopersburg will be the artist-in-residence during the month of August at the mini-gallery of the James A. Michener Branch of the Bucks County Free Library. Ms. Dajay studied as a child with Dr. Walter Baum. She began working with watercolors approximately 10 years ago.

Recent exhibits include the Hotel Bethlehem, Valley Federal Bank and Merchants Bank.



DR. STETTLER - Headmaster of Wyoming Seminary, selecting 14 paintings that I am giving the School



Dot, opening a gift from Dr. Stettler

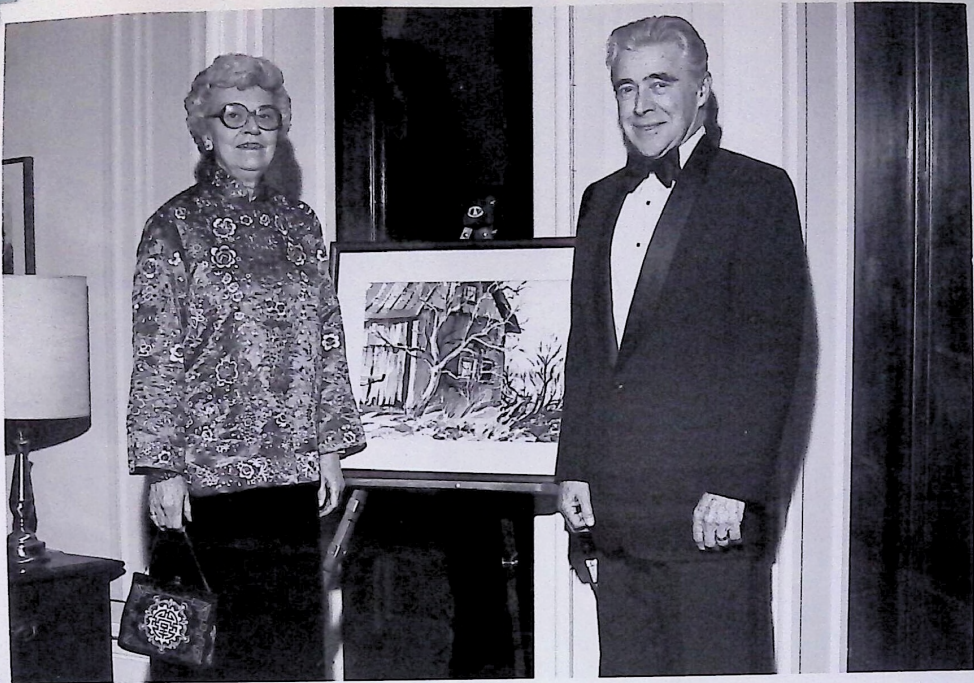


Mike Berqman + Jessie

PUBLICITY FOR
CLEARANCE SALE



TREE AT PINE RUN
given to Missy Johnson



Betty + Tom Kiley at showing of my gifts to Wikes



Lourse + Don Carpenter - same show

R/45



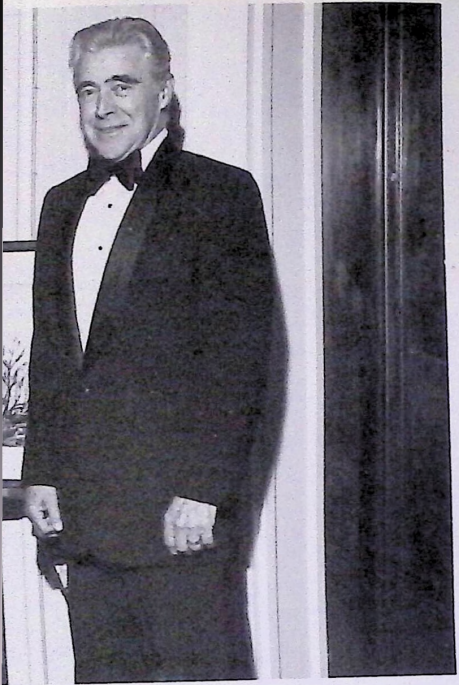
Betsy Bell Condon

RECO

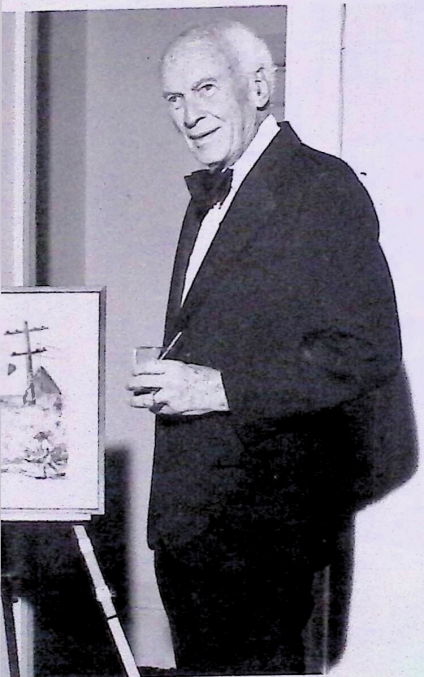
The

WECKESS

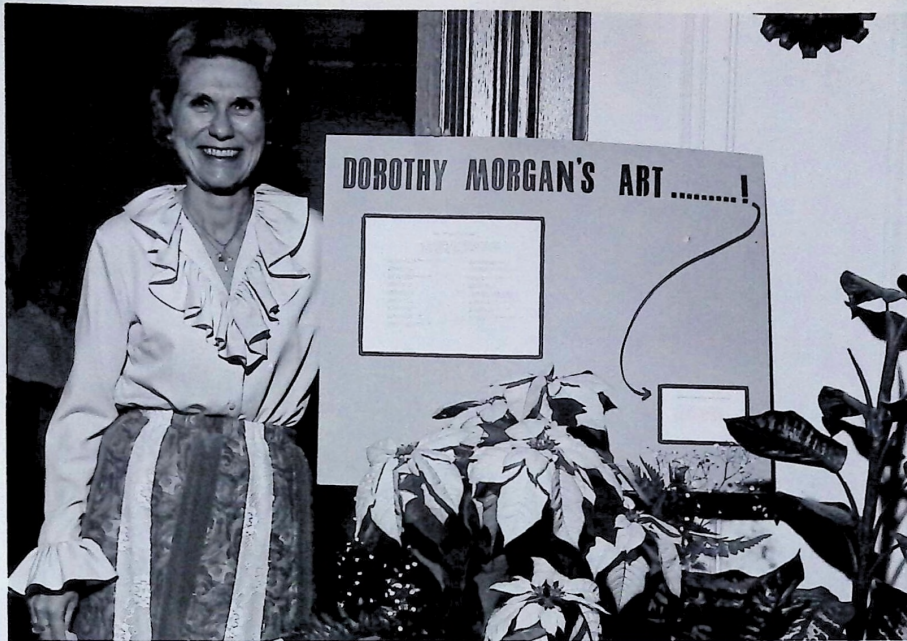
Dorothy Mor
recently given W
watercolors and p
Wyoming Valley.
available) is locat
was formerly par
Ballroom.



wind of my gifts to Wilkes



same show



Betsy Bell Condon

The Fifth Annual
RECOGNITION DINNER
The John Wilkes Club
of
Wilkes College

WECKESSER HALL ART DISPLAY
(Third Floor)

Dorothy Morgan, artist and Wilkes-Barré native, has recently given Wilkes College a collection of her watercolors and pen sketches, depicting scenes of Wyoming Valley. An informal exhibit of her work (listing available) is located on the third floor, in an area which was formerly part of the Weckesser family's Oriental Ballroom.

*Retirement Living...
Bucks County Style.*

"THE CRAFT BARN"



D.R. MORGAN

The ideal retirement community...one that constantly refreshes and renews the quality of your lifestyle.



PINE RUN

↑
AD

RETIREMENT COMMUNITY
In Historic, Nearby Doylestown, Pennsylvania
(215) 345-9000 • Out of PA 1-800-992-8992

**1987-1988 Season
PROGRAM
OPERA COMPANY OF PHILADELPHIA**

P-42

*Retirement Living...
Bucks County Style.*

"THE INN"



D.R. MORGAN

The ideal retirement community...one that constantly refreshes and renews the quality of your lifestyle.



PINE RUN

**PROGRAM
RETIREMENT COMMUNITY**
In Historic, Nearby Doylestown, Pennsylvania
(215) 345-9000 • Out of PA 1-800-992-8992

Living...
Bucks County Style.
"THE BARN"



PINE RUN

COMMUNITY
Doylestown, Pennsylvania
Out of PA 1-800-992-8992

88 Season
PROGRAM
OF PHILADELPHIA

Retirement Living...
Bucks County Style.
"THE INN"



D.R. MORGAN

The ideal retirement
community...one that
constantly refreshes
and renews the quality
of your lifestyle.



PINE RUN

PROGRAM
RETIREMENT COMMUNITY
In Historic, Nearby Doylestown, Pennsylvania
(215) 345-9000 • Out of PA 1-800-992-8992

*Retirement Living...
Bucks County Style.*
"MAGNOLIA COURT"



D.R. MORGAN
The ideal retirement
community...one that
constantly refreshes
and renews the quality
of your lifestyle.



PINE RUN

RETIREMENT COMMUNITY
In Historic, Nearby Doylestown, Pennsylvania
(215) 345-9000 • Out of PA 1-800-992-8992

**1987-1988 Season
PROGRAM
OPERA COMPANY OF PHILADELPHIA**



Garden apartments at Pine Run make it easy to enjoy the natural
acres overlook Pine Run Lake and Valley. Watercolor by resident
PINE RUN - Ferry & Iron Hills Rds. - Doylestown, PA - 215/



Cards + note paper

P.44



See p. 44

Garden apartments at Pine Run make it easy to enjoy the natural beauty of Bucks County. 41 naturally landscaped acres overlook Pine Run Lake and Valley. Watercolor by resident artist Dorothy Morgan. PINE RUN - Ferry & Iron Hills Rds. - Doylestown, PA - 215/345-9000



Cards + note paper

see p. 44

PHIA

iving...
ty Style.
URT"



UNITY
nnsylvania
3-992-8992

ason
PHILADELPHIA



See p: 44

Garden apartments at Pine Run make it easy to enjoy the natural beauty of Bucks County. 41 naturally landscaped acres overlook Pine Run Lake and Valley. Watercolor by resident artist Dorothy Morgan. PINE RUN - Ferry & Iron Hills Rds. - Doylestown, PA - 215/345-9000



Cards + note paper

see 843



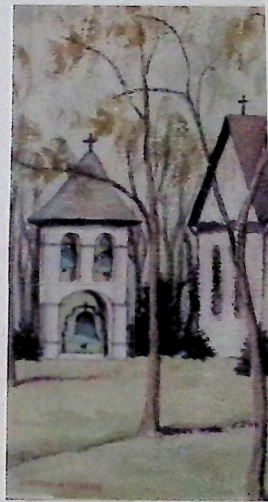
Yugoslavia

Christmas Card - 1979 ↑

Christmas Card ↓



Bucks County barn



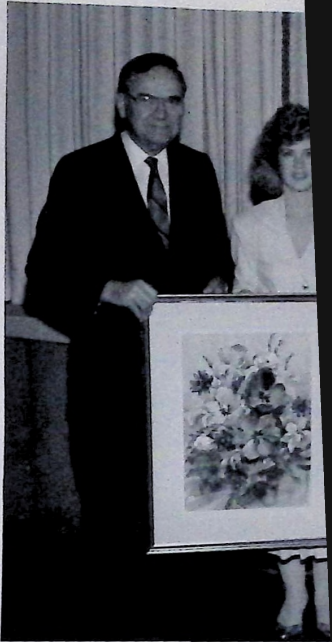
A Chapel in Doylestown



Christmas Card ↓



A Chapel in Doylestown



**Doro
Paintin**



*From left to right:
Nocerine, Kindergar
Kindergarten teacher*

Dorothy Rittenhu
recently gave sever
Lower School. Mrs
Institute and has gi
school. "My first in
student at the Instit
recently visited with
returned with sever
the Lower School at



Dorothy Morgan Gives Paintings to Lower School



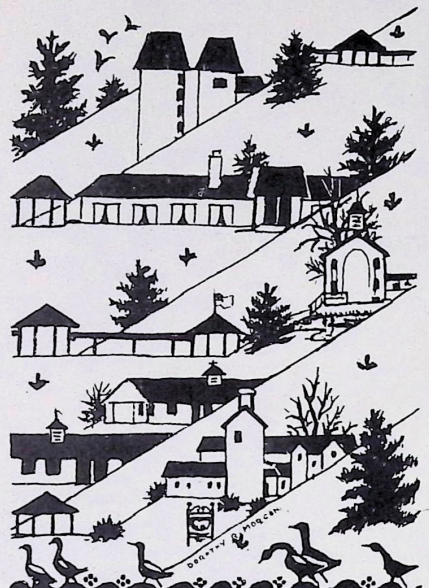
From left to right: Stettler; Eileen Warren, art teacher; Beverly Nocerine, Kindergarten teacher; Mary Catherine Shedlawski, Kindergarten teacher; and Thomas Meseck, Dean of the Lower School

Dorothy Rittenhouse Morgan '17, Doylestown, PA, recently gave several additional original paintings to the Lower School. Mrs. Morgan is a graduate of the Wilkes-Barre Institute and has given paintings on several occasions to the school. "My first interest in painting came when I was a student at the Institute," Mrs. Morgan recalls. Dr. Stettler recently visited with Mrs. Morgan in Doylestown and returned with several of her paintings which he presented to the Lower School at their annual parents' dinner.

gs
nd
an
he
ber
ed



PINE RUN



DOYLESTOWN, PA. U.S.A.



DOROTHY RITTENHOUSE MORGAN

This Album contains a partial record of the paintings done by Dorothy Morgan, Wilkes-Barré native and well-known eastern Pennsylvania artist. Miss Morgan was a graduate of The Pratt Institute, New York and the Boston School of Fine Arts. She was a charter member of the Wyoming Valley Art Association.

d. n.d. n.d. n.d.

11/17

DOROTHY RITTENHOUSE MORGAN

This Album contains a partial record of the paintings done by Dorothy Morgan, Wilkes-Barre native and well-known eastern Pennsylvania artist. Miss Morgan was a graduate of The Pratt Institute, New York and the Boston School of Fine Arts. She was a charter member of the Wyoming Valley Art League. Miss Morgan died in February, 1992.

* * * *



DOROTHY RITTENHOUSE MORGAN

This Album contains a partial record of the paintings done by Dorothy Morgan, Wilkes-Barré native and well-known eastern Pennsylvania artist. Miss Morgan was a graduate of The Pratt Institute, New York and the Boston School of Fine Arts. She was a charter member of the Wyoming Valley Art League. Miss Morgan died in February, 1992.

summary
,
s
s
l, n.d.
as-Barré, n.d.
se, n.d.
te Area", n.d.
uzerne
ort, Pa., n.d.
1959
te Area, n.d.

7
10
C

16 paintings

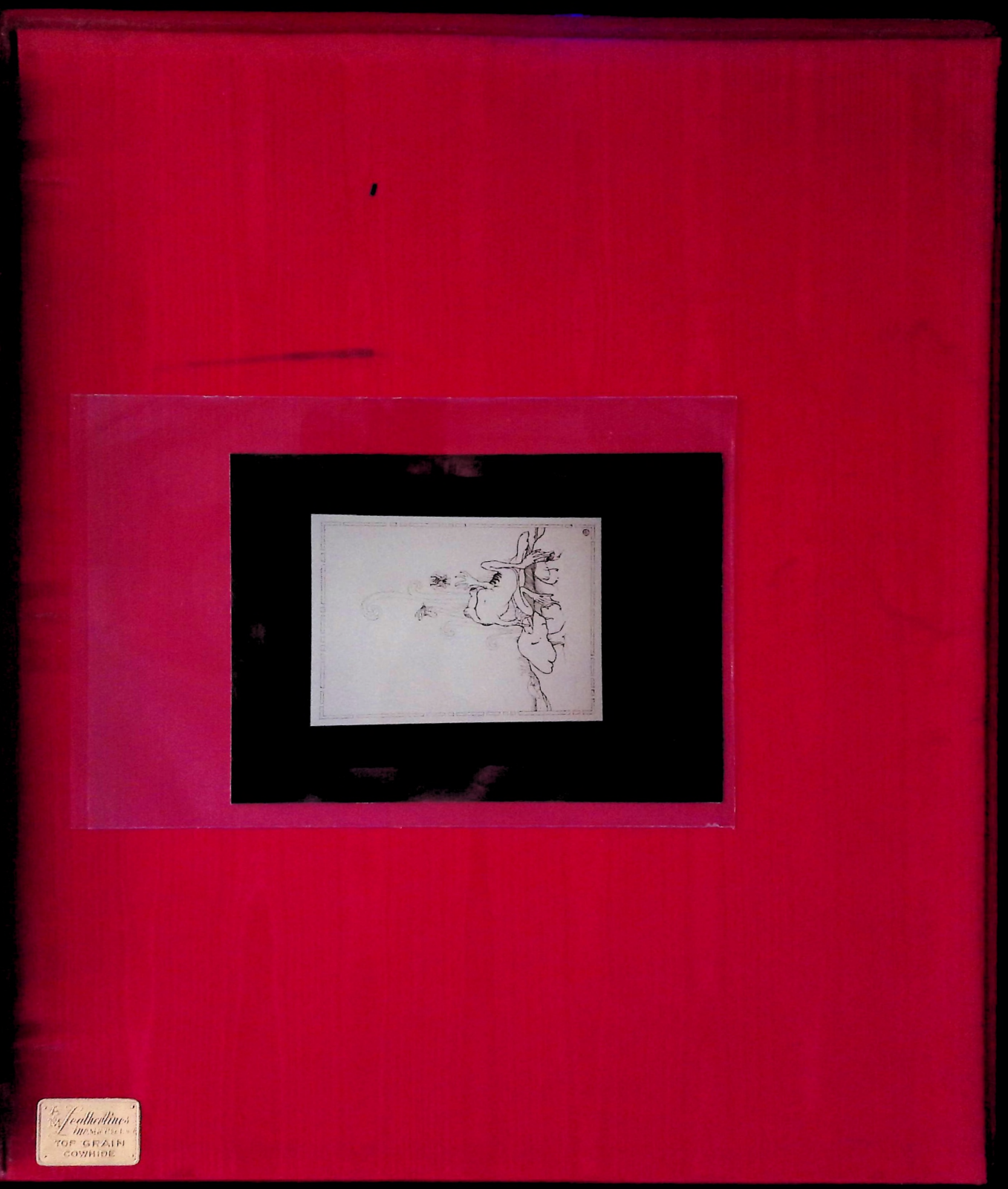
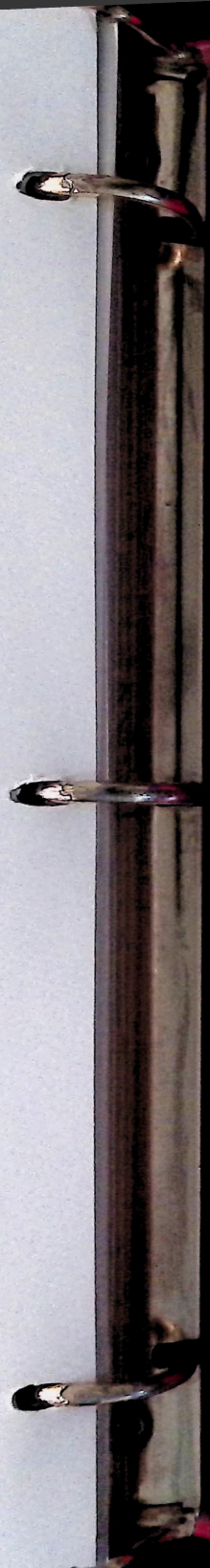
WORKS BY DOROTHY R. MORGAN

Dorothy Morgan, artist and Wilkes-Barré native, has recently given Wilkes College a collection of her watercolors and pen sketches, depicting scenes of Wyoming Valley. We are pleased to present this informal exhibit of her work.

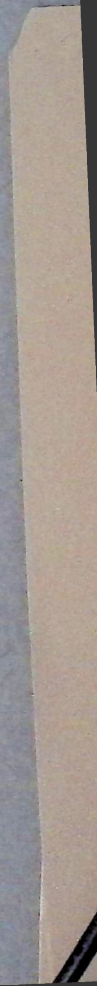
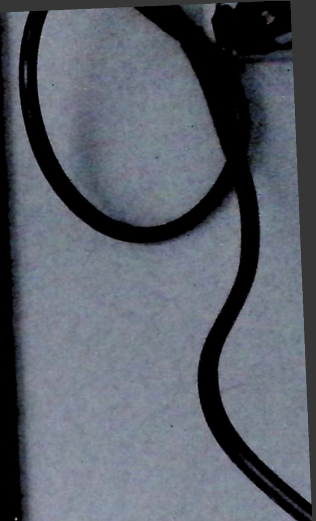
- | | |
|---|--|
| * 1. <u>Suddenly It's Spring, (West Side)</u> , 1966
Watercolor on paper | * 10. <u>In Our Valley, (Luzerne)</u> , n.d.
Watercolor on paper |
| * 2. <u>Harry E. Colliery</u> , n.d.
Watercolor on paper | 11. <u>Osterhout Library, Wilkes-Barré</u> , n.d.
Ink on paper |
| 3. <u>Wilkes-Barré From Route 309</u> , 1962
Watercolor on paper | 12. <u>Luzerne County Court House</u> , n.d.
Ink on paper |
| * 4. <u>Company House</u> , n.d.
Watercolor on paper | 13. <u>Anthracite Area</u> , n.d.
Watercolor on paper |
| * 5. <u>Diamond Street</u> , n.d.
Watercolor on paper | 14. <u>Luzerne County, "Anthracite Area"</u> , n.d.
Study for <u>In Our Valley, Luzerne</u> |
| 6. <u>Larksville</u> , n.d.
Watercolor on paper | 15. <u>The Meeting House, Forty Fort, Pa.</u>, n.d.
Watercolor on paper |
| 7. <u>By The Culm Pile</u> , n.d.
Watercolor on paper | 16. <u>Miners' Homes After Hours</u> , 1959
Watercolor on paper |
| * 8. <u>Spring in Kirby Park</u> , 1969
Watercolor on paper | 17. <u>Dorrance Colliery, Anthracite Area</u> , n.d.
Ink on paper |
| * 9. <u>Ramshackled, (Back Country)</u> , 1964
Watercolor on paper | |

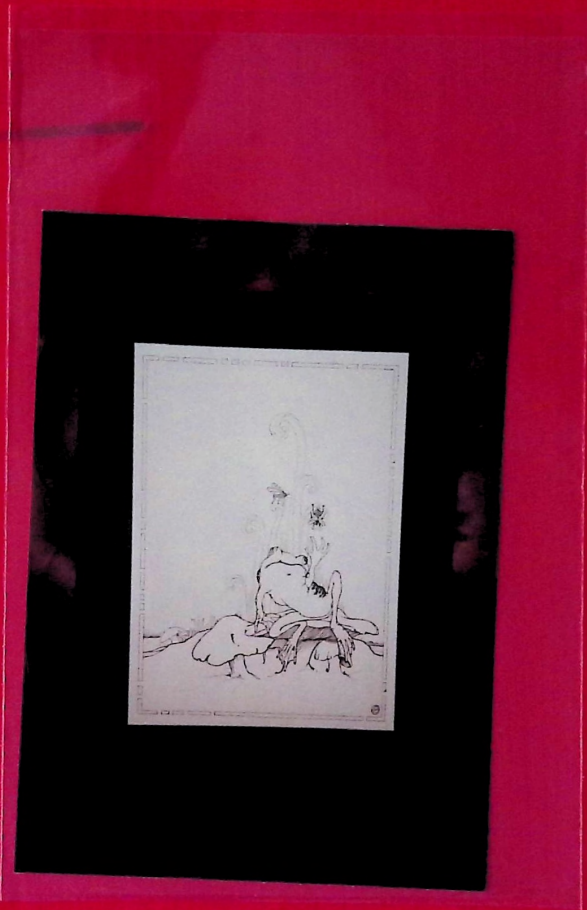
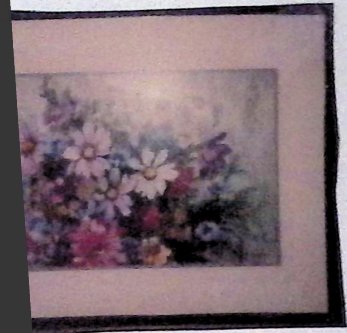
* Paintings in Album

* "Up on The Hill" could be # 3 or # 14
15 - to Betsy CONDROH past Wilkes Art Show -

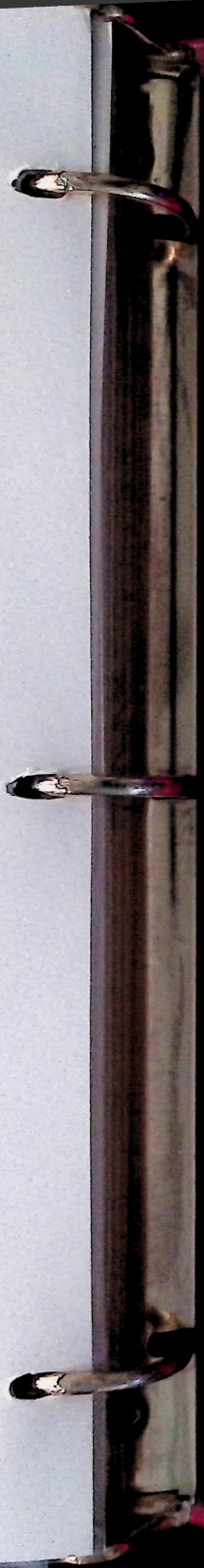


Leatherlines
models
TOP GRAIN
COWHIDE

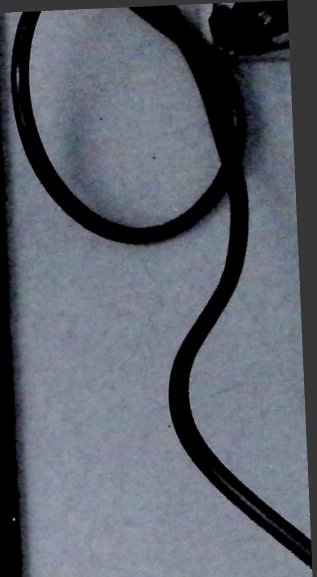


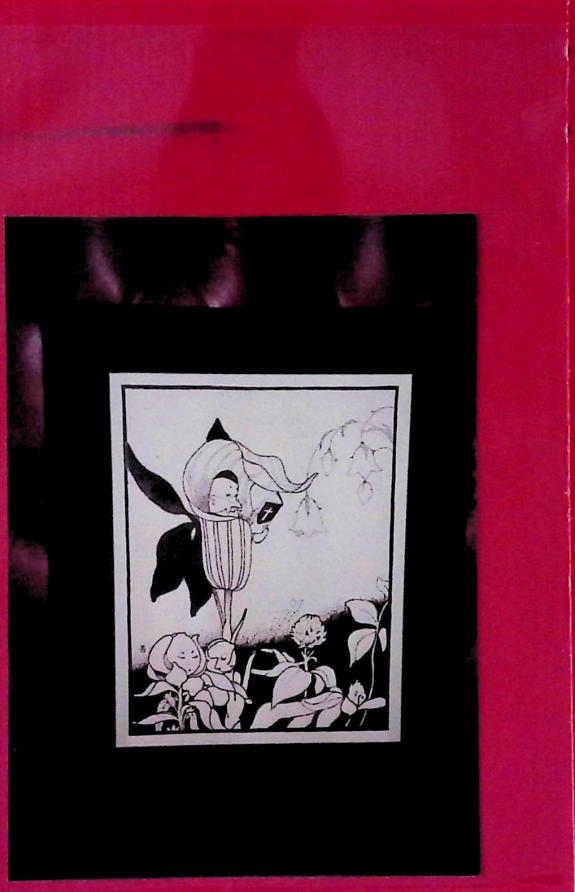


W. J. Galt
MADE IN U.S.A.
TOP GRAIN
COWHIDE

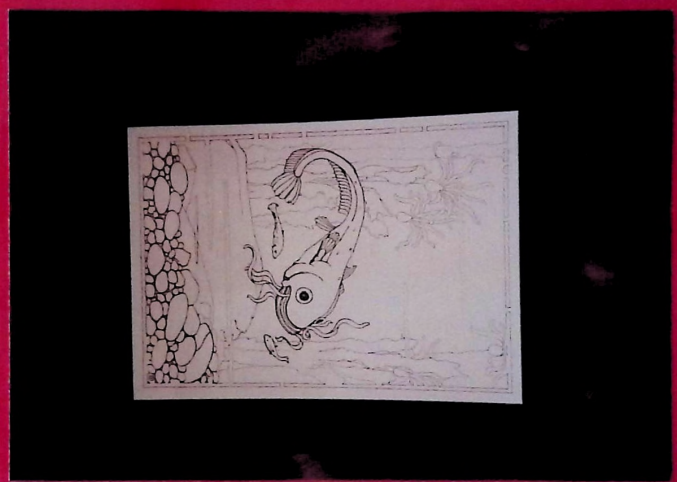


Featherlines
MADE IN U.S.A.
TOP GRAIN
COWHIDE





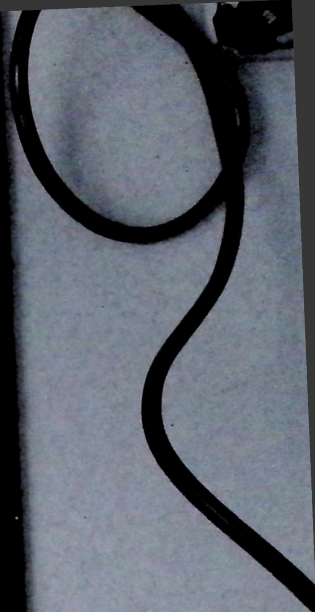
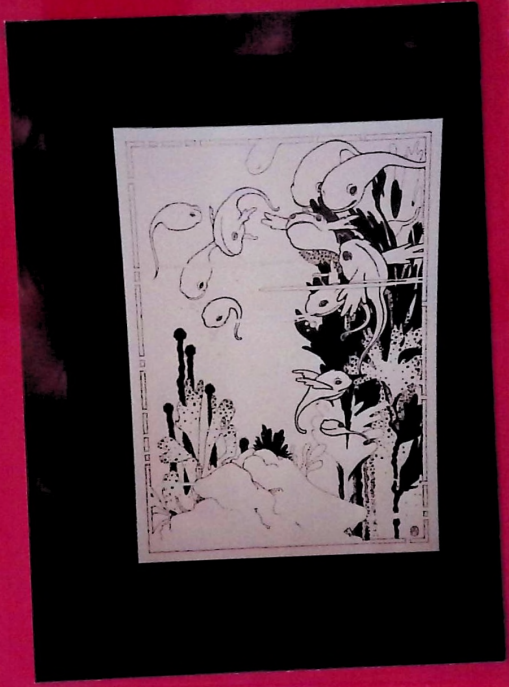
Leatherline's
Museum
TOP GRAIN
COWHIDE



W. Featherline
MADE IN U.S.A.
TOP GRAIN
COWHIDE

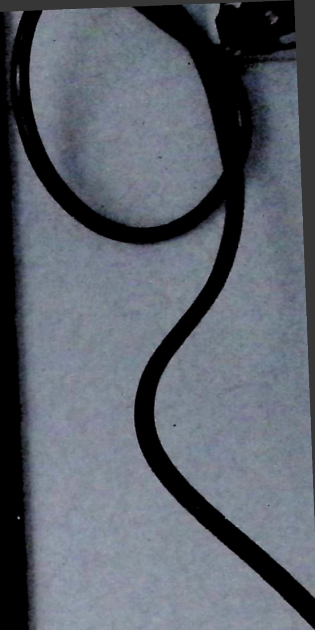
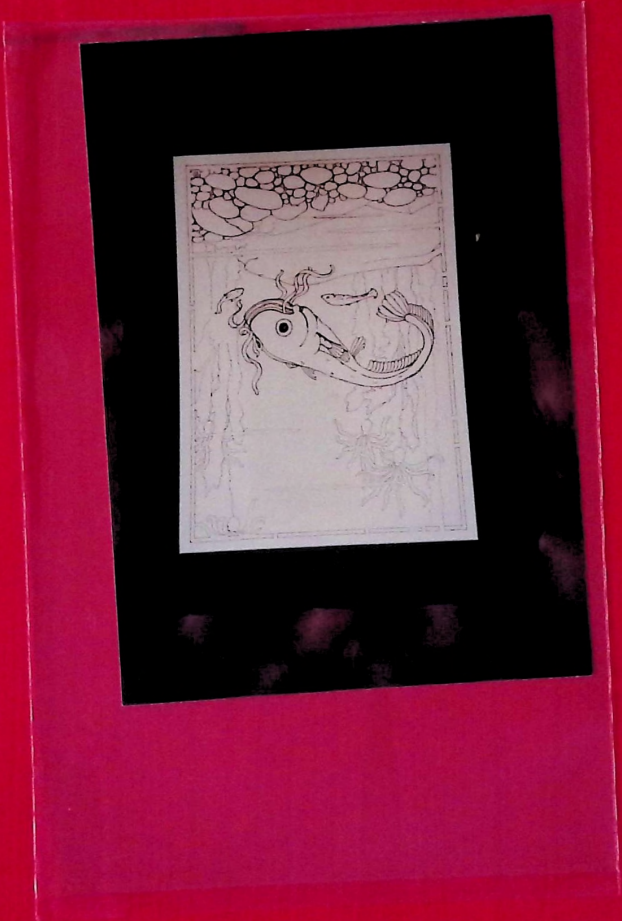


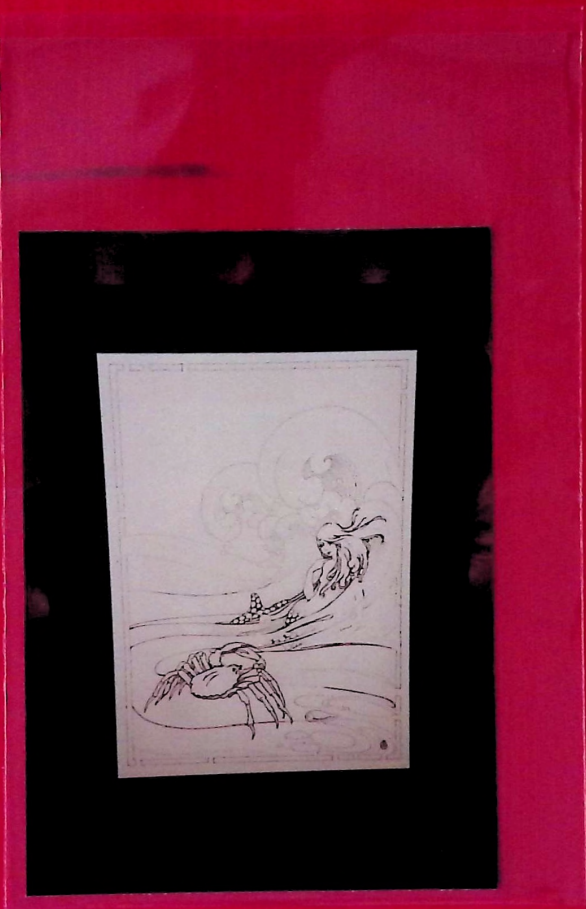
Featherline
MADE IN U.S.A.
TOP GRAIN
COWHIDE



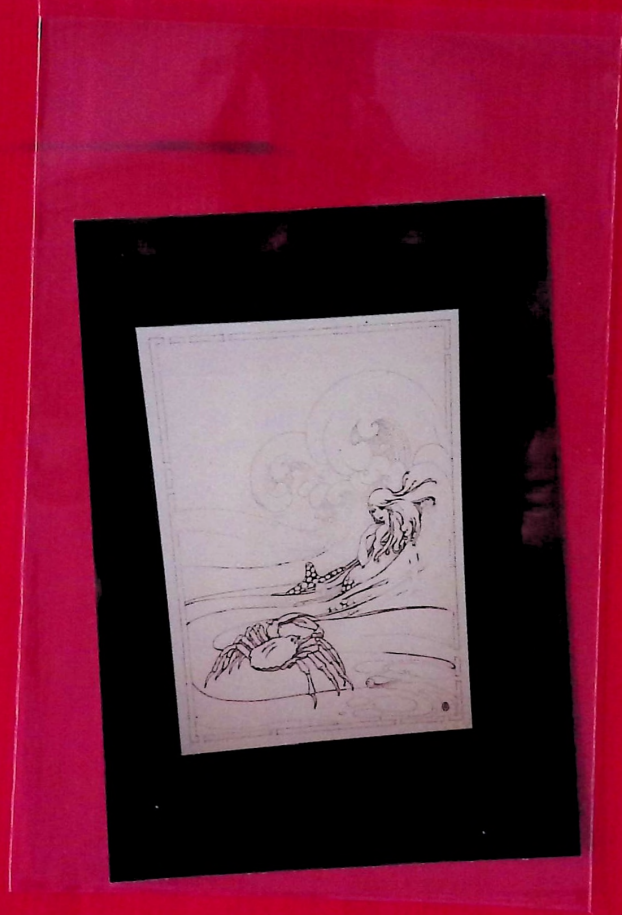


Leatherline
MADE IN U.S.A.
TOP GRAIN
COWHIDE





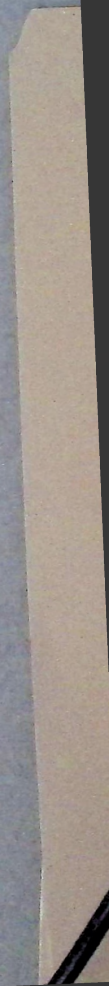
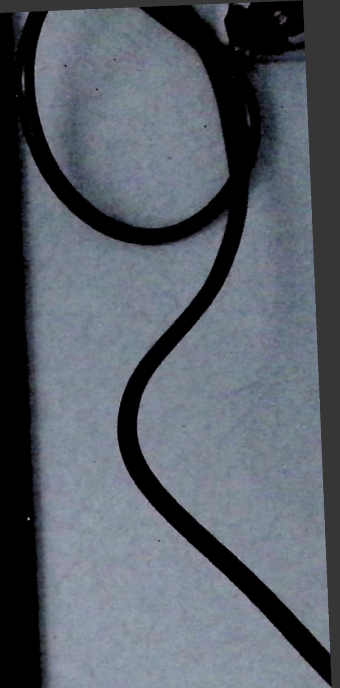
Featherlines
MANUFACTURED BY
TOP GRAIN
COWHIDE



The Featherline
TOP GRAIN
COWHIDE



Leatherlines
MONTICELLO
TOP GRAIN
COWHIDE



DOROTHY B...

This Album contains a
collection of Dorothy's
well-known camera
and a graduate of the
Boston School of Fine
Arts at the Wyoming Valley
in February 1921.

Leathman
MADE IN U.S.A.
TOP GRADE
COWHIDE

