



The Beacon



Vol. XXXIX No. 7

Wilkes College Wilkes-Barre, PA 18766

October 30, 1986

Trivia Elections bring Senators to area

by Jim Pyrah

For better or for worse, 1986 is an election year and with election day looming in the very near future, we can see the various campaigns gearing up for a big finish.

In the very best tradition of political stumping this area recently was a stopping

point for two well known U.S. Senators.

The first was Senator Edward Kennedy who was the featured guest at a \$200 per couple cocktail reception held last Friday at the Woodlands. The reception was in support of the candidacy of Bob Edgar, who is seeking a seat in the U.S. Senate.

Arriving to the Spencer Cottman trio's rendition of "Happy days are here again," Senator Kennedy and Edgar were greeted by a large and enthusiastic crowd.

Kennedy was introduced by Wilkes-Barre's own Mayor Thomas McLaughlin, who, incidently, was accompanied to the event by his pals Robert Wilkie and Frank Harrison.

Kennedy called this the most important election for the country "since 1960." He said we have a "false economic prosperity" today and that a decline of industry and a loss of jobs results in a loss of hope.

"The most important investment we can make is in the future," said Kennedy. He further stated that "the U.S. is the best hope for all mankind."

Bob Edgar, after being introduced by Sen. Kennedy was greeted by a loud round of applause. He called the



Senator Edward Kennedy campaigns for Bob Edgar.

Democratic ticket in this election "the best ticket in a quarter of a century."

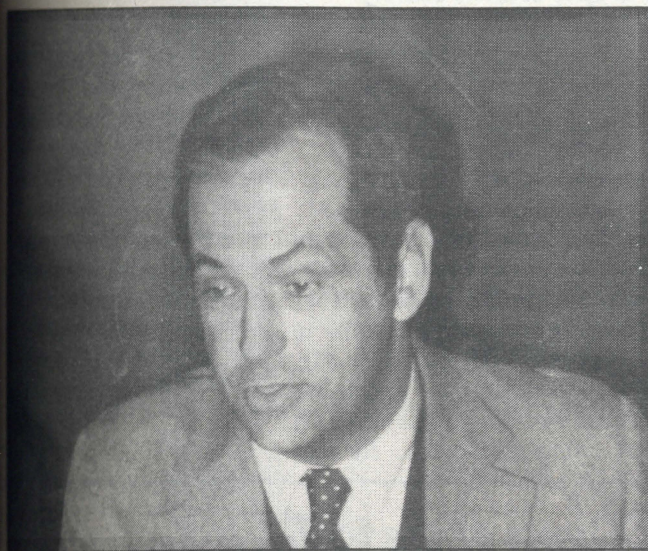
Edgar stated that he was tired of seeing industrial jobs decline" and called his party "the party of hope."

In reference to his support of student aid Edgar asked the question "If we

have the dollars to make smart weapons, then why don't we have the dollars to make our children smart?"

The second national figure to grace this area with his presence was Sen. Bill Bradley of New Jersey. He appeared at the Kirby

Continued on p. 4



Senator Bill Bradley campaigns for Paul Kanjorski.

Lighting a concern

by Joe Kultys

The problem of poor lighting on the Wilkes campus has become an increasing concern for both the students and the staff. The parking lots are dark and Charlanne Stanton, head of Commuter Council, especially around Gore and Temple and a lot between Stark and the Library is really dark.

Lighting on campus is an issue among an entire list of renovations and Paul O'Hop, Vice

President of Business Affairs and Auxillary Enterprises.

O'Hop, along with the student deans, Charles Abate, and some others, has taken many walks around the entire campus trying to determine where lights should be added.

There are many dark areas and we want a higher degree of safety for our students. Lighting these areas will provide personal safety, accident prevention, and better campus security in general, said O'Hop.

O'Hop also commented

that it would take at least another three or four weeks before the project could be started. "We have to get the specifying and illuminating factors and also keep things constituent with what we already have," said O'Hop. "It's not only our parking lots but all of our property--over 40 buildings.

"We're willing to make the investment if they're (the students) willing to keep it clean," said O'Hop. There are other projects going on at the same time, such as the renovations to

Stark Lobby and the improvements to the grounds.

"We have to get contractors and bids for the electrical work to do it properly. This is the students' home, and they have to learn to care for it as much as the caretakers do. The many renovations which are taking place this semester, including the work being done on the Student Union Building, will help to make our campus a bigger and brighter one," said O'Hop.

Inside this issue:

Treat mom and dad to a day at Wilkes p. 5

Halloween's roots date way back p. 6

A special evening with Barry Drake p. 8

History Department offers four new courses p. 4

Colonels maul Lions p. 12

Spring '87 master schedule inside

Editorial

To be or not to be . . . announced

If you haven't noticed yet, the "Wilkes College Master Schedule Spring 1987" appearing as a part of this week's *Beacon* does not include the room numbers for most of the classes. There are a number of possible reasons for the deletion of such pertinent information.

Perhaps the Registrar's Office forgot. However, the presence of little "tba's" indicates that the rooms were intentionally left out. If it were a mistake, the room number column would undoubtedly be blank.

Could it be that the class locations were intentionally "forgotten" for another reason? Could it be a plan devised so that students will pay their bills more promptly? Maybe. The plan may be that students will receive the classroom assignments when, and only when, their balance is paid.

If this, indeed, is the reason for the delay in assigning classrooms, there may be a few problems with the plan. Using the schedule as a payment device can only cause more confusion at the beginning of the semester than experienced now. Students who normally would have no reason to visit Sturdevant Hall during the first week of school will now have to stand in long lines to find out where their classes are meeting. The mere thought of the scene is frightening!

What about checks that are lost in the mail? Will the students be made to pay for the mistakes of the United States Postal Service? Will the policy be enforced strictly--no money, no class? Mistakes such as this will cause many problems and headaches.

Finally, if one has any idea about how the human brain (especially the conniving student's brain) works, it is safe to assume that students will find any and all "loopholes" in the system.

Word on the location of the class will spread rather quickly. Students will be loitering in Stark Lobby in order to snag a friend or another student who registered for the same class and who has, they hope, paid his bill.

Instructors will be harrassed in the hallways by students seeking their class. And if the instructors can't be found in the hall, students will be camping outside office doors so that they can follow them to class.

This may be a bit of an exaggeration, but the point that there will be problems as a result of these actions should be considered. Perhaps another method for assuring payment should be devised so that there is less confusion for everyone, especially those who pay their bills on time.

The Beacon

VOL. XXXIX No. 7 October 30, 1986

Editor-in-chief Pamela K. Jones
News Editors..... Michelle Munday
Elizabeth Mazzullo
Feature Editors..... Amy Hancock
Lorri Steinbacher
Sports Editor..... Jim Pyrah
Copy Editor..... Wendy Rosencrance
Photography Editor..... Murnal Abate
Staff Photographer..... Bruce Alexis
Advertising Manager..... Tom Mineo
Business Manager..... Joel Fomalont
Advisor..... Tom Bigler

Contributing Writers: Ellen Campbell, Wendy Holden, Tom Urso, Debbie DeCesare, Jane Brown, Joe Kultys, Stacey Baldwin, Kim Klimek.

Published weekly during the fall and spring semesters excepting scheduled breaks and vacation periods. All views expressed are those of the individual writer and not of the publication or the College. Names may be withheld from letters to the editor, but all letters to the editor must be signed to insure validity.

Reader respons

Dear Editor,

Mr. Glawe, I get the feeling that you're going to vote for Marc Holtzman and are upset that someone has criticized the somewhat questionable political tactics of your candidate. I also get the feeling that you and said candidate are good friends, since you're on a first name basis.

The intelligent and unbiased reader, in reading Mr. Morrell's letter, would have seen that the real issue was not a \$300 coat sleeve, the Jewish faith, or even the cafeteria food, but a concern over a lack of consideration on the part of Holtzman campaign workers.

Mr. Glawe, I am a registered Republican from the 11th congressional district, and my family is politically active. Four or five months ago, I would have told you and any pollster who asked that I would probably be voting for Marc Holtzman on Tuesday, November 4. I was, at that time, anxious to see what a young and enthusiastic man like Holtzman had to offer the people of our district.

My doubts about Holtzman for Congress mai started pouring in. You're right, Mr. Glawe, I can throw away unwanted mail if I choose. Perhaps Mr. Holtzman would have been better off if I did throw away his campaign materials, up to and including "Paul Kanjorski's Congressional Report Card."

However, even if I had not read my mail, I still would have seen the coup de grace that changed my mind completely. I picked up *The Times Leader* this morning and was interested to find a picture of Marc Holtzman, smiling and holding up a small glass vial, on the front page. Curiously, I read the accompanying article, which detailed Holtzman's trip to the doctor and gleeful submission to a urine test, with full press coverage! That was it! I'd had my fill, so to speak.

In closing, Mr. Glawe, I'd like to say that I won't be voting for Marc Holtzman on November 4, and not because I'm anti-Semitic either.

Sincerely,
A. Gaiteri

Dear Editor,

D. Glawe, obviously you did not understand Mr. Morrell's letter. I don't feel it was necessary for you to therefore malign it. Mr. Morrell was not upset by people becoming involved in our election system. He was

upset by the app Holtzman aids used campus and so was I.

I find it amusing for to assume mr. Morre Kanjorski supporter interpret facts like Wallace! Was it necessary for Holtz yuppie friends to app students in the dining outdoors on campus, in Hall and in dorms? I their "foot-in-the vacuum cleaner sales approaches more offensive on more than visit to my room. "No not a fair or just answer them. This, D. Glawe harassment. Also, authorized campaigning in buildings?

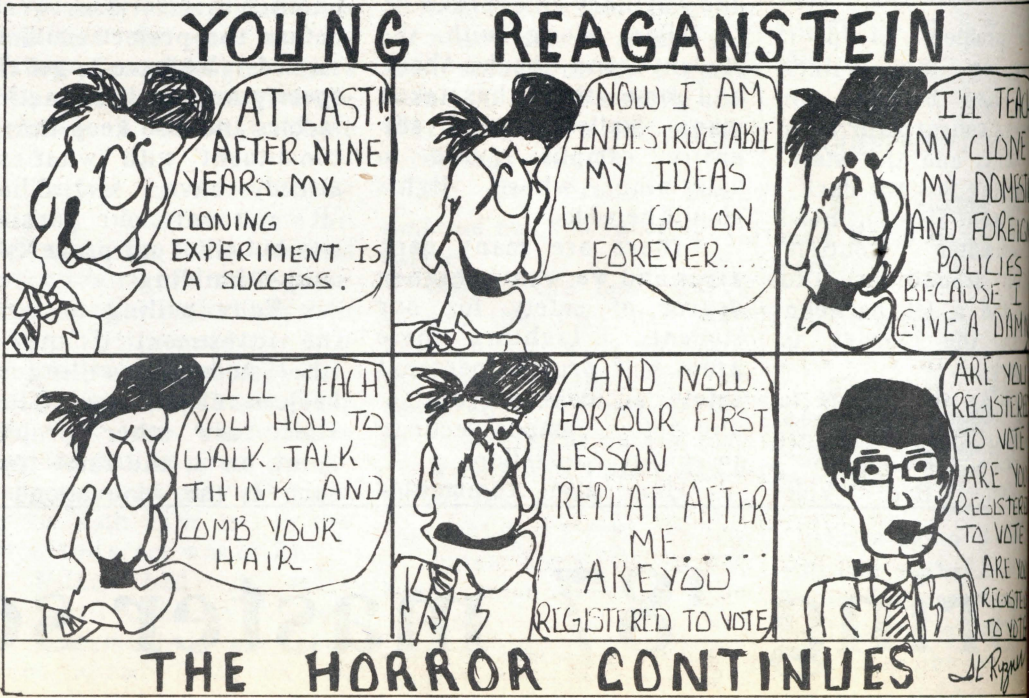
Before you take your Minutes" style of presentation too serious, you really feel that all 2500 registered students now vote? I'm not even if there are 2500 students enrolled here! How students filled out a simply to free themselves the persistent clods? amazed me is that wh

Continued on page

Quote of the week:

"Better to be silent and be thought a fool, than to speak and remove all doubt."

--Anonymous



Beacon Wo

by Elizabeth Mazzullo

"Laser."

When you hear t what images does it co Scenes from Sta probably--Luke Sky battles against Dart Maybe you think of ne techniques which use even of President Reag Wars" defense plan.

But would you e "term paper"? Or ho "resume"? Or, may Beacon?

Yet these last th have as much to do wi as the first three.

Why? The Macinto Writer.

You might have heard something ab LaserWriter.

Wilkes' Macinto (located in SLC 134) and maybe you've used out a term paper, lab resumé to give it "professional" look.

But even if you hav the LaserWriter, you've seen what it can do looked at *The Beacon* because all our headl printed using the LaserV fact, you're looking at of what the LaserWrite right now, because th



PRESENTS

COLO

Packag

*Steambo

*8 days -

*Jan. 7 -

*Round T

*Plus Fre

*\$399 Qu

*Sign up

*\$50 price

HOURS MON.

Beacon needs LaserWriter

Wouldn't it be nice?

by the approach
an aids used on
s and so was I.

ind it amusing for you
sume mr. Morrell a
ski supporter. You
ret facts like Mike
e! Was it at all
ary for Holtzman's
efriends to approach
ts in the dining hall
rs on campus, in Stark
nd in dorms? I found
"foot-in-the door"

m cleaner salesman
aches more than
ive on more than one
o my room. "No" was
fair or just answer to
This, D. Glawe is

ment. Also, who
rized their
igning in private
ngs?

fore you take your "S
es" style of data
atation too seriously do
ally feel that all of the
egistered students will
ote? I'm not even sure
re are 2500 students
led here! How many
nts filled out a form
y to free themselves of
ersistent clods? What
d me is that when I

by Elizabeth Mazzullo

"Laser."

When you hear this word, what images does it conjure up? Scenes from *Star Wars*, probably--Luke Skywalker's battles against Darth Vader. Maybe you think of new surgical techniques which use lasers or even of President Reagan's "Star Wars" defense plan.

But would you ever think "term paper"? Or how about "resumé"? Or, maybe, *The Beacon*?

Yet these last three items have as much to do with "laser" as the first three.

Why? The Macintosh LaserWriter.

You might have already heard something about the LaserWriter.

Wilkes' Macintosh Lab (located in SLC 134) has one, and maybe you've used it to print out a term paper, lab report or resumé to give it a more "professional" look.

But even if you haven't used the LaserWriter, you've certainly seen what it can do if you've looked at *The Beacon* this year, because all our headlines are printed using the LaserWriter. In fact, you're looking at a sample of what the LaserWriter can do right now, because this article

was printed on it.

Something that can produce a copy that looks professionally typeset has to be hard to use, doesn't it?

Wrong. That's what I thought, too, before I tried the LaserWriter for the first time.

When we were finishing up our first issue, I went over to the Mac Lab to type our headlines onto a disk and print them out on the LaserWriter.

It wasn't what I expected.

First of all, I had heard a lot about the LaserWriter. From everyone's descriptions of the amazing things the LaserWriter could do, I thought it would be huge, about the size of a large typesetting machine.

Wrong again. I got to the Mac Lab, and after looking around for a few minutes, I realized that the thing that I thought was a small desktop copier was the LaserWriter.

O.k., I thought. Now what?

I turned the Mac on, opened the headline file and started to go through the "Print" commands. Seems easy so far, I thought. There are a few more choices on the "Print" menu for the LaserWriter than for the ImageWriter, but they're not that complicated.

There is one very noticeable difference between printing on

the LaserWriter and printing on an ImageWriter, and it's a difference that can be disturbing to the first-time LaserWriter user.

The LaserWriter makes very little noise. Nothing moves. No paper is visible. There are no buttons to push. It does it all by itself, and you can't see it working.

And waiting for the printed copy seemed to take forever. (The LaserWriter actually prints several copies each minute.) I was so sure the LaserWriter hadn't received the instructions that I printed the document again.

Of course, you can guess what the result was. I had two letter-quality copies of the page in less than a minute.

The actual workings of the LaserWriter aren't *that* mysterious, but they certainly seemed that way to me when I used it for the first time.

According to Dr. John Koch, director of Academic Computer Services, the LaserWriter "works just like a Xerox machine."

He explained that there was one difference. "Instead of scanning your document, it [the LaserWriter] does it with a computer chip that guides a laser," Koch said. A document printed on the LaserWriter is made up of many tiny dots (approximately 300 dots per

inch), Koch said, and the laser "charges the dots that are supposed to be black."

Matt Zukoski, programmer/technical assistant, said that the LaserWriter "uses a Canon copier chassis."

According to Zukoski, the LaserWriter can print eight pages per minute after the documents are processed. Processing time depends on the length of the document, he said.

The ImageWriter--the dot-matrix quality Apple printer--is much slower by comparison. The older ImageWriter I prints 120 characters per minute on standard quality (so it takes approximately one minute to print each page), and the newer ImageWriter II can print 180 characters per minute on standard quality.

According to Zukoski, one LaserWriter costs Wilkes \$3,299. List price is \$4,999. An ImageWriter, by comparison, is \$412.50.

We at *The Beacon* now print only our headlines on the LaserWriter, but we would like to print everything in each issue this way to give the paper a more professional look.

To do this, we need to get our own LaserWriter. The Mac Lab's hours simply aren't long enough to accommodate our production schedule, since we do much of our layout after 11 p.m., after the Mac Lab has closed.

This article is a sample of what *The Beacon* could look like every week if we had our own LaserWriter.

Wouldn't it be nice?

Announcement

The next meeting of the Wilkes College Faculty Association will be held on Thursday, October 30th at 11 a.m. in Stark Learning Center, Room 1.

At the previous meeting Mr. Frank Salley gave an informative and enlightening report on Wilkes faculty salaries as compared with other colleges in Northeastern Pennsylvania.

This report will be discussed at the October 30th meeting. All faculty are urged to attend since this matter vitally concerns everyone.

Continued on page 1

a fool, than to speak

onymous

IN

I'LL TEACH
MY CLONE
MY DOMESTIC
AND FOREIGN
POLICIES
BECAUSE I
GIVE A DAMN

ARE YOU
REGISTERED
TO VOTE
ARE YOU
REGISTERED
TO VOTE
ARE YOU
REGISTERED
TO VOTE
ES

PARALLEL PERFORMANCE

PRESENTS

COLORADO POWDER

Package Includes:

- *Steamboat Colorado, Steamboat Springs, Colorado
- *8 days - 7 nights
- *Jan. 7 - 14, 1984
- *Round Trip via American Airlines
- *Plus Free tune ups for all parties
- *\$399 Quad - \$489 double (per person)
- *Sign up deadline: Nov 5, 1986
- *\$50 price increase after deadline



SKI TUNE UPS

WE PICK UP AND DELIVER SKIS... FREE

PARALLEL PERFORMANCE
29 R. PARKIN ST.
WILKES BARRE, PA

TUNE-UP INCLUDES:
VISUAL INSPECTION OF THE SKIS!!!
BASE STRUCTURING!
P-TEX NICKS AND GOUGES!
HOT IRON WAX!
EDGES SHARPENED!

HOURS MON. - SAT. 8:00 AM TO 9:00 PM

PHONE 825-TUNE

History Dept. offers four new courses

by Wendy Holden

Recently the History Department received a Pew Grant. This endowment is intended to further academic programs with interdisciplinary value. As a result of the grant four new courses will be offered in the History/Political Science Department.

"Men and Machines" is a course that grew directly from the Pew grant and will be taught by Dr. Harold Cox. The basic aim will be to relate the impact of technology on history. A textbook will not be required and all relevant materials will be drawn from a number of sources.

"The Origins of Modern Capitalism" will be taught by Dr. Joel Berlatsky and Theodore Engel, and will deal with the increasing interest in money as a goal. The course will attempt to explain how our economic system has developed this way. Much stress will then be placed upon the early modern period of the 16th, 17th and 18th centuries. The readings for the class will be only primary materials of each specific time period.

Also, the classes will be divided into small groups which will be required to interview selected business

entrepreneurs on how and why they achieved their success. The course will deal with what's going on in the real world.

These courses are geared to students who would normally take History 102. The work is not more difficult, and the course will fulfill not only the core requirements but also some in business administration.

Berlatsky commented on the new courses: "I encourage people to try these out. I'd like to think it will be interesting if people give it a try. It will be something different that relates class to what real life is all about."

In the Political Science Department, "The Constitution: 200 Years" will be offered specifically due to the Bicentennial of the Constitution. The course is designed to give people a feeling for what life was like in 1787. Its aim is to make the Founding real.

Emphasis will not be on lecture; instead it will center on two new approaches. Students in the course will each take on the role of a personality at the Convention. They will argue the same issues that the individual they represent argued during the actual Convention. The students will also work with high school

classes as if they were independent states deciding whether or not to ratify the Constitution. Members of the class will write Federalist and Anti-Federalist Papers to send to the classes to try to sway them in one direction.

Another course to be offered is "Women and the Law." It is not just for people interested in the law or law school. Topics to be discussed are Family Law, which includes divorce, custody, name changes, and marriage contracts, and Criminal Law, which will deal with rape, battering, and prostitution. Also to be covered are Health Law which will be concerned with birth control and abortion, and Employment and Education Law. The failure of the Equal Rights Amendment will be covered as well. The course will draw upon sociology, health care, history, law and politics.

As with the history courses, those offered in political science will be subject for credit for Political Science 105. Dr. Sue Behuniak-Long will be teaching both of these courses and said, "I'm excited at the prospect of exploring new course areas with the Wilkes students."



Once again efficiency is seen at its best on the Wilkes campus. For the past week and a half, a pile of garbage has been lying on the Weckesser lawn. The trash resulted from repairs being done to the roof of Weckesser Hall.

Elections

Continued from p. 1

Center this past Tuesday in support of incumbent Congressman Paul Kanjorski. Kanjorski is seeking his second term in Congress.

The pair came to Wilkes-Barre after addressing a group of students in Hazleton.

Bradley called Kanjorski a "staunch defender of the middle income taxpayer." He

called the recent tax "the best news for the income taxpayers" and commended Kanjorski's support of it.

Election day is not a very exciting one. The of Pennsylvania and district are presented some clear cut choices.ember, voting is not right, it's a duty. Take active part. Get out and

Readers' response

informed a ca that I was not wanted to vote filled me v Holtzman prop requested the a his yuppie frie him "convert" m Finally, I fee you haven't seen coat yet. There shops just past J the mall. If you there, I invite y mine at your leis

With all du
S.A. Bai

Dear Editor,

"An educated woman k mankind's progre intellectual vig courage, and endurance of an Educated Woman--Wilkes Bulletin).

After attendi College for two an years, I realize stanza of the poe to interactions offices of Sturde especially the Office

Yet again, th

Wilkes College

Fa

Do

The

multi-perc

Nowak, perfor

wooden blocks

tuned cymbals

Theodore

and

admission

at

OR a

There are

need to b

The yearl

at

(Attendance is

Be a blood buddy!

Bloodmobile at the Gym
Thursday, Nov. 6
from 10 a.m. to 4 p.m.

Share a pint with
a friend!

ST. MARY'S CAMPUS MINISTRY KICKOFF

This Sunday, after the 5:00 pm Mass.
Sunday Nov 2nd

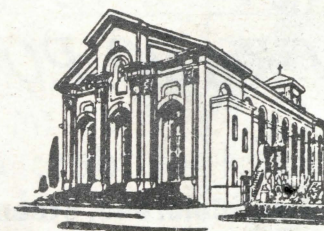
INFORMAL RECEPTION OF
WILKES COLLEGE CATHOLIC STUDENTS
AFTER THE 5:00 pm Mass.

Come meet each other and share ideas
about

how the Church and its new
campus minister

Tony Vento can serve you.

Call 823-4168



Bring a friend to this important meeting.

St. Mary's Church
134 S. Washington St.
Two blocks from Franklin between
South and North Hampton

the recent tax reform
est news for the middle
e taxpayers" and
ended Kanjorski for
upport of it.
ection day is not far off
should prove to be a
exciting one. The voters
nsylvania and of this
t are presented with
clear cut choices. Re-
voting is not only a
it's a duty. Take
part. Get out and vote.

buddy!

the Gym

ov. 6

4 p.m.

t with

ad!

STRY KICKOFF

:00 pm Mass.

2nd

TION OF
OLIC STUDENTS
m Mass.

and share ideas

and its new

ster

ve you.

8

ortant meeting.

rch
on St.
in between
ampton

Readers' response continued from page 2

informed a campaign aid
that I was not a "local" and
wanted to vote at home, he
filled me with more
Holtzman propaganda and
requested the aid of one of
his yuppie friends to help
him "convert" me!

Finally, I feel sorry that
you haven't seen a \$300 sport
coat yet. There are men's
shops just past Jean King at
the mall. If you can't make it
there, I invite you to view
mine at your leisure.

With all due respect,
S.A. Bailey

Dear Editor,

"An educated man or
woman knows that
mankind's progress requires
intellectual vigor, moral
courage, and physical
endurance." (The Marks
of an Educated Man or
Woman-Wilkes College
Bulletin).

After attending Wilkes
College for two and one half
years, I realize that this
stanza of the poem pertains
to interactions with the
offices of Sturdevant Hall,
especially the Finance
Office.

Yet again, they have

interrupted the busy life of
the student with compli-
cations in financial matters.
I must apologize for my lack
of subtlety, but it seems that
every year I have a dif-
ficulty with them.

This year it pertains to
an invoice I received a week
before I had to pay it. I
understand paying tuition is
a must, and I would gladly
hand over my life savings to
further my education. But,
earlier in this semester I had
inquired about my account
balance and I was told I had a
credit, so actually they owed
me money (imagine that!)

Well, like a good student
I'll pay my bill. I don't know
how, but I will definitely not
give them the satisfaction of
seeing me angrily quit this
fine institution. Hopefully
the lines of communication
among the co-workers in
these offices will become
more open for the benefit of
the students.

After all, when a
complication such as this
occurs how can a student be
expected to concentrated on
the complete works of
Shakespeare or a computer
program?

Sincerely,
"Barely Scraping By"

Wilkes College Percussion Ensemble Fall Concert at the CPA November 3 at 8:15 p.m.

The concert will feature eight
multi-percussionists, directed by Robert A.
Nowak, performing on instruments ranging from
wooden blocks and steel pipes to tuned drums and
tuned cymbals. Compositions by Anthony Cirone,
Theodore Frazeur, Moszkowski, Gounod,
and Debussy will be played.
Admission is free and open to the public.

NSO Meeting

Monday, Nov. 3
at 11 a.m. in the CPA
or at 5 p.m. in SLC 160

There are very important issues that
need to be discussed and voted on!
The yearbook picture will be taken
at the 5 p.m. meeting.

(Attendance is mandatory for all NSO members.)

October 30, 1986

PAGE FIVE



The Circle K Haunted House will be held through Nov. 1 at 373 N. Main Street in Wilkes-Barre. According to Circle K President Debbie Pavlico, there are "a whole bunch of different rooms" including a Devil's Den, a Guillotine Room, and a Cemetery room. Dracula and other characters will also be present to terrify visitors.

Treat Mom and Dad to a day at Wilkes

Wilkes College will hold
its 1986 Parents' Day on
Saturday, November 1,
beginning at 10 a.m. with a
reception in the Dorothy
Dickson Darte Center for the
Performing Arts. Designed
as an opportunity for
parents to meet college
faculty and administration
and to become familiar with
the Wilkes College commu-
nity, Parents' Day brings
hundreds of parents to the
campus each year.

This year's event will
feature a presentation on
"The State of College" by
President Christopher N.
Breiseth, and a speech
describing "The Sports

Conference Center," by John
Reese, Director of Athletics.

The entertainment
schedule includes a lunch-
eon in the gymnasium
featuring music by the
Wilkes Jazz Band, the Wilkes
vs. Widener University
football game and post-game
hot cider reception, and a
student talent show in the
Conyngham Student Center.

A special event added to
this year's Parent's Day
schedule and offered to the
general public at no charge
is "The Statue of Liberty's
Birthday: A Year to Cele-
brate Our Immigration
Heritage."

This event is intended to

recognize the ethnic heri-
tage and traditions of both
Wilkes College and the entire
Wyoming Valley, on the
advent of the 100th birthday
of the Statue of Liberty. "The
Statue of Liberty's Birthday"
celebration will begin at 8
p.m. in the Dorothy Dickson
Darte Center with opening
remarks by Christopher N.
Breiseth. A concert by the
Wilkes College Wind
Ensemble will follow.

For further information
on the Wilkes College
Parents' Day schedule,
contact the Dean of Student
Affairs Office at 824-4651,
ext. 250.

THE CUE AND CURTAIN CLUB WILL SPONSOR

SINGING TELEGRAMS

FOR ANY OCCASION!

PRICE: \$3.00

RESERVATIONS MUST BE MADE AT LEAST ONE WEEK
IN ADVANCE.

FOR MORE INFORMATION, CONTACT ANDREA AT

EXT. 107 OR 829-9717

Halloween dates way back

by Kim Klimek

Throughout the United States, people are preparing for "All Saint's Day" or "Halloween." Children don strange costumes and ring neighbors' doorbells for the sake of "trick-or-treating." Teenagers play practical jokes on youngsters. Social groups sponsor games such as costume judging and applebobbing contests. Friends share ghost stories, watch scary movies, and behave recklessly on this night. Why?

Tradition. The Halloween holiday originated in the ancient European area of Gaul, Britain, and Ireland where the Druids were members of a priesthood. They believed the old year ended on October 31st and, on that night, a "lord of death" gathered together all the dead souls who were to enter animal bodies instead of human bodies. They offered prayers and gifts to the sun god at a festival to lessen the punishment of evil souls. The Druids held cats sacred because they believed they possessed condemned human souls. Many Irish superstitions about cats originated from this belief.



This is why one should be wary of black cats on Halloween.

The Irish word "jack-o'-lantern" comes from a tale of a man named Jack. According to the tale, this man could enter neither Heaven nor Hell until Judgement Day because of his practical jokes. He was sentenced to wander the Earth carrying a lantern. The idea of carving

pumpkins as lanterns comes from this legend.

Another of today's Halloween traditions which began in Ireland is trick-or-treating. The Irish peasants begged for money in the 17th century to buy luxuries for a harvest feast giving honor to the gods for the fall crops. Here in the United States, children of all ages dress up in costumes and wander

through their neighborhoods, tell jokes and threaten trickery if they don't receive candy or money.

English society in the late 18th and early 19th centuries celebrated a harvest feast on October 31st. They invented games using apples strung across poles or afloat in water. Irish girls roasted nuts over fires to predict the faithfulness of their lovers.

They named nuts after the person they liked or loved. It was believed that if the nut cracked and split, the lovers would be unfaithful. If the nuts cracked and burned, their lovers would be true to them.

Witches, goblins, and ghosts have been part of superstitions since Biblical times. Superstitions were strongly believed at the end of the 15th century. Within a six-year span, the judge reputedly put many "witches" to death. People pretended to be witches to cover their deeds of vengeance upon their neighbors. Later, people played pranks on others and blamed the occurrences on witches.

On this superstitious Halloween's Eve, many feared to leave their house. They thought witches, goblins, ghosts, and other "evil" spirits lurked in the dark. Today the Halloween tradition exists. Every year, "bogymen" wander around on Halloween night. People took forward October 31st to play practical jokes, watch horror movies, visit haunted houses, and "trick-or-treating."

Garner holds seminar

On Thursday, October 23, the Nursing Department's Faculty Affairs Committee sponsored a lecture by Dr. Art Garner entitled "Motivating Students Through Creative Teaching." The lecture, made available through PEW funds, was attended by over thirty faculty members of Wilkes College and other neighboring institutions.

Dr. Garner is a nationally acclaimed speaker and seminar leader, and author of over thirty articles. In addition he has authored several books including *Improving Teaching In Medical Schools*, *Values In A Changing World*, *Curriculum for Better Schools*, and *Why Winners Win*.

He is currently a professor at Memphis State University's Education Department. He holds his doctorate from University of Houston. Dr. Garner lectures regularly to thousands of members of health organizations on how they can further improve the efficiency of their work.

Participants in the program, mainly health care educators, were taught skills of adult education that they could apply to their clinical setting. Members of the Wilkes College faculty should use these techniques to further improve the quality of education at Wilkes College.

You can still buy your
Wilkes boxer shorts

Call ext. 117 or visit Waller North

Only \$5.00 per pair



REFRESHMENTS!

MUSIC BY STRANGER!

PRIZES FOR BEST COSTUMES

9:30pm to 1:00am

SPONSORED BY CC/IRHC

Admission will be

\$1.00 with costume, \$2.00 without.

**DON'T FORGET ABOUT THE
HALLOWEEN GYM PARTY
THIS FRIDAY NIGHT!**

COURSE NUMBER BUILDING ROOM INSTRUCTOR CR

ACCOUNTING

ACC-101-E Elementary Accounting I
ACC-102-A Elementary Accounting II

1830 2115 tba
0715 0829 tba

Staff
Carrin

03
07

ack

named nuts after men
liked or loved. It was
said that if the nuts
were and split, the girls
would be unfaithful
nuts cracked and
ed, their lovers would
re to them.
iches, goblins, and
s have been parts of
stitutions since Biblical
Superstitions were so
gly believed at the end
e 15th century that
a six-year span, one
reputedly put 800
es to death. People
ded to be witches in
their deeds of ven
upon their neighbors
people played pranks
hers and blamed so
witches for those
ences.
this superstitious All
's Eve," many feared to
their house. They
ht witches, goblins
, and other "evil" spir
ked in the dark. Today
alloween tradition still
Every year, "boogy
wander around on this
People took forward to
r 31st to play practical
watch horror movies
haunted houses, and go
or treating.

RESHMENTS!
STRANGERS!
COSTUMES!
am
C/IRHC

THE
TY

Wilkes College Master Schedule Spring 1987

(Please keep this schedule--it will not be distributed on campus!)

WILKES COLLEGE MASTER SCHEDULE SPRING 1987 A1

COURSE NUMBER	COURSE TITLE	DAY	START TIME	END TIME	BUILDING ROOM	INSTRUCTOR	CR
ACCOUNTING							
ACC-101-E	Elementary Accounting I	t	1830	2115	tba	Staff	03
ACC-102-A	Elementary Accounting II	tr	0715	0829	tba	Capin, R.	03
ACC-102-B	Elementary Accounting II	mwf	1100	1150	tba	Cordora, R.	03
ACC-102-C	Elementary Accounting II	mwf	1200	1250	tba	Tucker, Ms. B.	03
ACC-102-D	Elementary Accounting II	trf	1300	1350	tba	Chisarick, C.	03
ACC-102-E	Elementary Accounting II	r	1830	2115	tba	Rash, F.	03
ACC-102-F	Elementary Accounting II	mwf	1300	1350	tba	Cordora, R.	03
ACC-112-A	Intermediate Accounting II	tr	0930	1050	tba	Broadt, K.	03
ACC-112-E	Intermediate Accounting II	u	1830	2115	tba	Broadt, K.	03
ACC-204-A	Managerial Accounting	mwf	1500	1550	tba	Tucker, Ms. B.	03
ACC-204-E	Managerial Accounting	n	1830	2115	tba	Tucker, Ms. B.	03
ACC-222-A	Taxes II	tr	0900	1050	tba	Chisarick, C.	03
	Accelerated	f	1000	1050	tba		
ACC-222-E	Taxes II	r	1830	2115	tba	Chisarick, C.	03
ACC-231-E	Auditing I	u	1830	2115	tba	Tucker, Ms. B.	03
ACC-242-A	Advanced Accounting II	uf	0800	0915	tba	Broadt, K.	03
ACC-242-E	Advanced Accounting II	n	1830	2115	tba	Williams, B.	03
ACC-252-A	Accounting Internship	*TO BE ARRANGED*			tba	Chisarick, C.	03
ACC-396-A	Independent Research	*TO BE ARRANGED*			tba	Staff	01
ACC-396-B	Independent Research	*TO BE ARRANGED*			tba	Staff	02
ACC-396-C	Independent Research	*TO BE ARRANGED*			tba	Staff	03
ACC-503-E	Managerial Accounting	r	1800	2050	Bedford12	Croop, F.	03
ACC-542-E	Financial & Tax Planning	t	1800	2050	Bedford13	Chisarick, C.	03
ACC-398-A	Ipcs: CPA Review Course	*TO BE ARRANGED*			tba	Tucker, Ms. B.	03
	Permission of Instructor						
AEROSPACE STUDIES							
AS -000-E	Leadership Laboratory	r	1900	2100	tba	Lynn, L.	00
AS -102-A	US Military in ContempWorldII	r	1300	1350	tba	Billings	01
AS -102-E	US Military in ContempWorldII	r	1700	1750	tba	Billings	01
AS -202-A	Development of Air Power II	t	1300	1350	tba	Zimmerman	01
AS -202-E	Development of Air Power II	r	1600	1650	tba	Zimmerman	01
AS -251-A	Flight Ground/Training Prog	f	1400	1550	tba	Luther	01
	First 7 weeks only						
AS -302-A	Concepts of Mgmt & Ldrship II	t	1500	1730	tba	Lynn, L.	03
AS -302-E	Concepts of Mgmt & Ldrship II	r	1530	1800	tba	Lynn, L.	03
AS -312-A	Natl Security Amer Society II	t	1500	1730	tba	Luther	03
AS -312-E	Natl Security Amer Society II	r	1530	1755	tba	Luther	03
ART							
ART-101-A	Experiencing Art	m	1300	1415	tba	Sterling, W.	03
ART-101-B	Experiencing Art	tr	1300	1415	tba	Sterling, W.	03
ART-101-E	Experiencing Art	u	1830	2115	tba	D'Vorzon, B.	03
ART-104-A	3-D Design	m	1300	1445	tba	Staff	03
ART-116-A	History of Art II	m	0930	1045	tba	Sterling, W.	03
ART-206-A	Color and Design II	tr	0900	1045	tba	D'Vorzon, B.	03
ART-225-A	Printmaking I	tr	1500	1645	tba	D'Vorzon, B.	03
ART-233-A	Sculpture I	m	1500	1645	tba	Staff	03
ART-243-A	Ceramics I	tr	1500	1645	tba	Adams, J.	03
ART-254-A	Graphic Design I	tr	0900	1045	tba	Fuller, R.	03
ART-270-A	Photography I	m	1000	1145	tba	Cohen, M.	03
ART-298-A	T: Health Hazards in Arts	f	0900	1145	tba	Fuller, R.	02
	First 10 weeks only						
ART-298-B	T: Health Hazards in Arts	f	0900	1145	tba	Fuller, R.	03
ART-328-A	Printmaking II	tr	1500	1645	tba	D'Vorzon, B.	03
ART-397-A	Seminar: Contemporary Issues	u	1300	1445	tba	D'Vorzon, B.	02

ACCOUNTING

ACC-101-E	Elementary Accounting I	t	1830	2115	tba	Staff	03
ACC-102-A	Elementary Accounting II	tr	0715	0829	tba	Capin, R.	03
ACC-102-B	Elementary Accounting II	mwf	1100	1150	tba	Cordora, R.	03
ACC-102-C	Elementary Accounting II	mwf	1200	1250	tba	Tucker, Ms. B.	03
ACC-102-D	Elementary Accounting II	trf	1300	1350	tba	Chisarick, C.	03
ACC-102-E	Elementary Accounting II	r	1830	2115	tba	Rash, F.	03
ACC-102-F	Elementary Accounting II	mwf	1300	1350	tba	Cordora, R.	03
ACC-112-A	Intermediate Accounting II	tr	0930	1050	tba	Broadt, K.	03
ACC-112-E	Intermediate Accounting II	u	1830	2115	tba	Broadt, K.	03
ACC-204-A	Managerial Accounting	mwf	1500	1550	tba	Tucker, Ms. B.	03
ACC-204-E	Managerial Accounting	n	1830	2115	tba	Tucker, Ms. B.	03
ACC-222-A	Taxes II	tr	0900	1050	tba	Chisarick, C.	03
	Accelerated	f	1000	1050	tba		
ACC-222-E	Taxes II	r	1830	2115	tba	Chisarick, C.	03
ACC-231-E	Auditing I	u	1830	2115	tba	Tucker, Ms. B.	03
ACC-242-A	Advanced Accounting II	uf	0800	0915	tba	Broadt, K.	03
ACC-242-E	Advanced Accounting II	n	1830	2115	tba	Williams, B.	03
ACC-252-A	Accounting Internship	*TO BE ARRANGED*			tba	Chisarick, C.	03
ACC-396-A	Independent Research	*TO BE ARRANGED*			tba	Staff	01
ACC-396-B	Independent Research	*TO BE ARRANGED*			tba	Staff	02
ACC-396-C	Independent Research	*TO BE ARRANGED*			tba	Staff	03
ACC-503-E	Managerial Accounting	r	1800	2050	Bedford12	Croop, F.	03
ACC-542-E	Financial & Tax Planning	t	1800	2050	Bedford13	Chisarick, C.	03
ACC-398-A	Ipcs: CPA Review Course	*TO BE ARRANGED*			tba	Tucker, Ms. B.	03
	Permission of Instructor						

AEROSPACE STUDIES

AS -000-E	Leadership Laboratory	r	1900	2100	tba	Lynn, L.	00
AS -102-A	US Military in ContempWorldII	r	1300	1350	tba	Billings	01
AS -102-E	US Military in ContempWorldII	r	1700	1750	tba	Billings	01
AS -202-A	Development of Air Power II	t	1300	1350	tba	Zimmerman	01
AS -202-E	Development of Air Power II	r	1600	1650	tba	Zimmerman	01
AS -251-A	Flight Ground/Training Prog	f	1400	1550	tba	Luther	01
	First 7 weeks only						
AS -302-A	Concepts of Mgmt & Ldrship II	t	1500	1730	tba	Lynn, L.	03
AS -302-E	Concepts of Mgmt & Ldrship II	r	1530	1800	tba	Lynn, L.	03
AS -312-A	Natl Security Amer Society II	t	1500	1730	tba	Luther	03
AS -312-E	Natl Security Amer Society II	r	1530	1755	tba	Luther	03

ART

ART-101-A	Experiencing Art	mwf	1300	1415	tba	Sterling, W.	03
ART-101-B	Experiencing Art	tr	1300	1415	tba	Sterling, W.	03
ART-101-E	Experiencing Art	u	1830	2115	tba	D'Vorzon, B.	03
ART-104-A	3-D Design	mwf	1300	1445	tba	Staff	03
ART-116-A	History of Art II	mwf	0930	1045	tba	Sterling, W.	03
ART-206-A	Color and Design II	tr	0900	1045	tba	D'Vorzon, B.	03
ART-225-A	Printmaking I	tr	1500	1645	tba	D'Vorzon, B.	03
ART-233-A	Sculpture I	mwf	1500	1645	tba	Staff	03
ART-243-A	Ceramics I	tr	1500	1645	tba	Adams, J.	03
ART-254-A	Graphic Design I	tr	0900	1045	tba	Fuller, R.	03
ART-270-A	Photography I	mwf	1000	1145	tba	Cohen, M.	03
ART-298-A	T: Health Hazards in Arts	f	0900	1145	tba	Fuller, R.	02
	First 10 weeks only						
ART-298-B	T: Health Hazards in Arts	f	0900	1145	tba	Fuller, R.	03
ART-328-A	Printmaking II	tr	1500	1645	tba	D'Vorzon, B.	03
ART-397-A	Seminar: Contemporary Issues	u	1300	1445	tba	D'Vorzon, B.	02

COURSE NUMBER	COURSE TITLE	DAY	START TIMES	END TIMES	BUILDING ROOM	INSTRUCTOR	CR
BIOLOGY							
BIO-104-A	Biological Science II	rw	1000	1050	tba	Prater	03
BIO-104-A1	Laboratory	r	1300	1450	tba	Prater	00
BIO-104-A2	Laboratory	r	1500	1650	tba	Prater	00
BIO-104-A3	Laboratory	f	1300	1450	tba	Prater	00
BIO-116-A	Human Anatomy & Physiology II	trf	1300	1350	tba	Hayes, W.	04
BIO-116-A1	Laboratory	n	1400	1645	tba	Hayes, W.	00
BIO-116-A2	Laboratory	u	1400	1645	tba	Hayes, W.	00
BIO-116-A3	Laboratory	r	1400	1645	tba	Hayes, W.	00
BIO-122-A	Principles Modern Biology II	ntuf	1000	1050	tba	Klenow, K.	04
BIO-122-A1	Laboratory	n	1400	1645	tba	Staff	00
BIO-122-A2	Laboratory	t	1400	1645	tba	Staff	00
BIO-122-A3	Laboratory	u	1400	1645	tba	Staff	00
BIO-122-A4	Laboratory	r	1400	1645	tba	Staff	00
BIO-122-A5	Laboratory	f	1400	1645	tba	Staff	00
BIO-224-A	Cellular & Molecular Biology	rwrf	0900	0950	tba	Bottjer, K.	04
BIO-224-A1	Laboratory	n	1400	1645	tba	Staff	00
BIO-224-A2	Laboratory	t	1400	1645	tba	Staff	00
BIO-224-A3	Laboratory	u	1400	1645	tba	Staff	00
BIO-315-A	Molecular Biology	rwf	1100	1150	tba	Turoczi, L.	03
BIO-317-A	Ecology	rwf	1300	1350	tba	Klenow, K.	03
BIO-319-A	Plant Diversity	rw	0900	0950	tba	Klenow, K.	03
BIO-319-A1	Laboratory	r	0800	1055	tba	Klenow, K.	00
BIO-341-A	Immunology & Immunochemistry	rw	1000	1050	tba	Bottjer, K.	03
BIO-341-A1	Laboratory	t	1400	1645	tba	Bottjer, K.	00
BIO-397-A	Seminar	r	1500	1650	tba	Bottjer, K.	01
BIO-398-A	T: Mammalian Physiology	tr	1300	1350	tba	Long, D.	03
BIO-398-A1	Laboratory	u	1400	1645	tba	Long, D.	00
BIO-398-B	T: Reproductive Biology	t	1000	1050	tba	Long, D.	01

BUSINESS ADMINISTRATION

BA -114-A	Salesmanship	ntr	1400	1450	tba	Gera, G.	03
BA -198-A	T:Origins in Modern Capitalism	tr	1300	1415	tba	Engel, T.	03
BA -209-E	Business Correspond & Reports	n	1830	2115	tba	Raspen, R.	03
BA -212-A	Government and Business	trf	1400	1450	tba	DeYoung, R.	03
BA -216-A	Advertising	tr	1430	1545	tba	Lewis, K.	03
BA -216-E	Advertising	n	1830	2115	tba	Gera, G.	03
BA -220-E	Real Estate	r	1830	2115	tba	Staff	03
BA -222-A	Marketing	rwf	1000	1050	tba	Rodin, S.	03
BA -222-B	Marketing	tr	1300	1415	tba	Lewis, K.	03
BA -222-E	Marketing	u	1830	2115	tba	Lengle, Charles	03
BA -226-A	Investments	rw	1230	1415	tba	Rodin, S.	03
	Accelerated	f	1200	1250	tba		
BA -226-B	Investments	rwf	1100	1150	tba	Rodin, S.	03
BA -226-E	Investments	t	1830	2115	tba	Staff	03
BA -232-A	Business Law-Agency + Sales	rwf	0800	0850	tba	Gurdin, C.	03
BA -232-B	Business Law-Agency + Sales	n	0900	0950	tba	Gurdin, C.	03
		tr	0800	0850	tba		
BA -232-C	Business Law-Agency + Sales	trf	0900	0950	tba	Gurdin, C.	03
BA -232-E	Business Law-Agency + Sales	n	1830	2115	tba	Gurdin, C.	03
BA -240-A	Property Insurance	trf	1300	1350	tba	Farrar, W.	03
BA -240-E	Property Insurance	t	1830	2115	tba	Farrar, W.	03
BA -252-A	Operations & Systems Mgmt	rwf	0800	0850	tba	Raspen, R.	03
BA -252-E	Operations & Systems Mgmt	n	1830	2115	tba	Staff	03
BA -254-A	Orgn Design & Behavior	ntr	1300	1350	tba	Gera, G.	03
BA -254-E	Orgn Design & Behavior	t	1830	2115	tba	Gera, G.	03
BA -254-A	Business Pol & Corp Respon	rwf	0900	0950	tba	Raspen, R.	03

COURSE NUMBER	COURSE TITLE	DAY	START TIMES	END TIMES	BUILDING ROOM	INSTRUCTOR	CR
EARTH & ENVIRONMENTAL SCIENCE							
EES-198-E	T:Outdoor Experiential Fld Std	t	1800	1945	tba	Toothill, W.	03
EES-198-E1	Laboratory	*TO BE ARRANGED*			tba	Staff	00
EES-230-A	Ocean Science	tr	0800	0930	tba	Case, J.	04

COURSE NUMBER	COURSE TITLE	DAY	START TIMES	END TIMES	BUILDING ROOM	INSTRUCTOR	CR
BUSINESS ADMINISTRATION							
BA -396-A	Independent Research	*TO BE ARRANGED*			tba	Staff	01
BA -396-B	Independent Research	*TO BE ARRANGED*			tba	Staff	02
BA -396-C	Independent Research	*TO BE ARRANGED*			tba	Staff	03
BA -398-A	T:Personal Finance	tr	0800	0915	tba	Nealey, B.	03
BA -398-B	T:Small Business Management	rwf	0900	0950	tba	Robbins, C.	03
BA -398-C	T:Intro to Women's Studies	tr	1530	1700	tba	Taylor, N.	03
BA -507-E	Business and Society	r	1800	2050	SLC 209	Raspen, R.	03
BA -507-E1	Business and Society	r	1800	2050	SLC 311	Farrar, W.	03
BA -512-E	Price Policy and Procedure	t	1800	2050	Bedford12	Taylor, N.	03
BA -521-E	Organizational Theory	t	1800	2050	SLC 347	Lewis, K.	03
BA -522-E	Quantitative Aspects of Mgmt	r	1800	2050	SLC 342	Lewis, K.	03
BA -550-E	T: Entrepreneurship	u	1800	2050	Bedford12	Lohman, F.	03
BA -550-E1	T: SBA	*TO BE ARRANGED*			tba	Christola, J.	03
BA -552-E	Financial Management	n	1800	2050	SLC 342	Engel, T.	03

CHEMISTRY

CHN-116-A	The Chemical Reaction	rwf	1100	1150	tba	Rozelle, R.	04
		r	1000	1050	tba		
CHN-116-A1	Laboratory	n	1400	1645	tba	Staff	00
CHN-116-A2	Laboratory	t	1400	1645	tba	Staff	00
CHN-116-A3	Laboratory	u	1400	1645	tba	Staff	00
CHN-116-A4	Laboratory	r	1400	1645	tba	Staff	00
CHN-118-A	Chemistry for Engineers	trf	1300	1350	tba	Swain, W.	03
CHN-118-A1	Laboratory	n	1400	1645	tba	Staff	00
CHN-118-A2	Laboratory	t	1400	1645	tba	Staff	00
CHN-118-A3	Laboratory	r	1400	1645	tba	Staff	00
CHN-130-A	Organic and Biochemistry	ntuf	1000	1050	tba	Bohning, J.	04
CHN-130-A1	Laboratory	n	1400	1645	tba	Staff	00
CHN-130-A2	Laboratory	t	1400	1645	tba	Staff	00
CHN-130-A4	Laboratory	r	1400	1645	tba	Staff	00
CHN-222-A	Systematic Inorganic Chem	ntr	1300	1350	tba	Bohning, J.	04
CHN-222-A1	Laboratory	u	1400	1645	tba	Staff	00
CHN-232-A	Organic Chemistry II	rwf	1200	1250	tba	Stine, W.	04
		t	0900	0950	tba		
CHN-232-A1	Laboratory	n	1400	1645	tba	Staff	00
CHN-232-A2	Laboratory	t	1400	1645	tba	Staff	00
CHN-232-A3	Laboratory	r	1400	1645	tba	Staff	00
CHN-252-A	Physical Chemistry II	rwf	1200	1250	tba	Swain, W.	04
CHN-252-A1	Laboratory	u	1400	1645	tba	Swain, W.	00
CHN-274-A	Chem Structure Determination	rw	1300	1350	tba	Stine, W.	04
CHN-274-A1	Laboratory	t	0800	1050	tba	Staff	00
CHN-274-A2	Laboratory	t	1400	1645	tba	Staff	00
CHN-276-A	History & Literature of Chem	r	0900	1100	tba	Bohning, J.	03
CHN-276-A1	Laboratory	f	1300	1600	tba	Bohning, J.	00
CHN-325-E	Advanced Inorganic Chemistry	r	1830	2115	tba	Staff	03
CHN-362-A	Biochemistry II	tr	1300	1415	tba	Stine, W.	03
CHN-397-A	Seminar	r	1500	1645	tba	Salley, F.	01

EARTH & ENVIRONMENTAL SCIENCE

EES-110-A1	Laboratory	n	1500	1650	tba	Redmond, B.	00
EES-110-A2	Laboratory	u	1500	1650	tba	Redmond, B.	00
EES-110-E	Survey of Astronomy	r	1800	1945	tba	Redmond, B.	03
EES-110-E1	Laboratory	r	2000	2200	tba	Redmond, B.	00
EES-130-A	Environmental Awareness	tr	1400	1450	tba	Staff	03
EES-130-A1	Laboratory	r	1500	1645	tba	Staff	00
EES-130-A2	Laboratory	r	1300	1445	tba	Staff	00

COURSE NUMBER	COURSE TITLE	DAY	START TIMES	END TIMES	BUILDING ROOM	INSTRUCTOR	CR
EDUCATION							
ED -500-E1	Computer Literacy-Secondary	n	1800	2100	SLC 127	Koch, J.	03
ED -582-A	Pascal	n	1900	2130	SLC 424	Pryor, R.	03
ED -598-E	T:Creativity in Elem Classroom	n	1800	2100	SLC 140	Polak, B.	03

BA -240-E	Property Insurance	t	1830	2115	tba	Farrar, W.	03
BA -252-A	Operations & Systems Mgmt	mwf	0800	0850	tba	Raspen, R.	03
BA -252-E	Operations & Systems Mgmt	n	1830	2115	tba	Staff	03
BA -254-A	Orgn Design & Behavior	ntr	1300	1350	tba	Gera, G.	03
BA -254-E	Orgn Design & Behavior	t	1830	2115	tba	Gera, G.	03
BA -256-A	Business Pol & Corp Respon	mwf	0900	0950	tba	Raspen, R.	03
BA -264-A	Retail Buying	mwf	1000	1050	tba	Cordora, R.	03

EES-110-A1	Laboratory	n	1500	1650	tba	Redmond, B.	00
EES-110-A2	Laboratory	u	1500	1650	tba	Redmond, B.	03
EES-110-E	Survey of Astronomy	r	1800	1945	tba	Redmond, B.	03
EES-110-E1	Laboratory	r	2000	2200	tba	Redmond, B.	00
EES-130-A	Environmental Awareness	tr	1400	1450	tba	Staff	03
EES-130-A1	Laboratory	r	1500	1645	tba	Staff	00
EES-130-A2	Laboratory	f	1300	1445	tba	Staff	00
EES-194-A	Introduction to Field Study	t	1300	1350	tba	Toothill, W.	01

COURSE NUMBER	COURSE TITLE	DAY	START TIME	END TIME	BUILDING ROOM	INSTRUCTOR	CR
---------------	--------------	-----	------------	----------	---------------	------------	----

EARTH & ENVIRONMENTAL SCIENCE

EES-198-E	T:Outdoor Experiential Fld Std	t	1800	1945	tba	Toothill, W.	03
EES-198-E1	Laboratory	*TO BE ARRANGED*			tba	Staff	00
EES-230-A	Ocean Science	tr	0800	0930	tba	Case, J.	04
EES-230-A1	Laboratory	u	1400	1645	tba	Case, J.	00
EES-240-A	Prin of Environmental Science	mwf	1300	1350	tba	Redmond, B.	04
EES-240-A1	Laboratory	n	1400	1645	tba	Staff	00
EES-331-A	Adv Air Qual Measurements	tr	1300	1350	tba	Case, J.	04
EES-331-A1	Laboratory	tr	1400	1645	tba	Case, J.	00
EES-392-A	Senior Projects II	*TO BE ARRANGED*			tba	Redmond, B.	02
EES-394-E	Advanced Field Study	r	1800	1850	tba	Toothill, W.	01
EES-395-A	Independent Research I	*TO BE ARRANGED*			tba	Staff	01
EES-395-B	Independent Research I	*TO BE ARRANGED*			tba	Staff	02
EES-395-C	Independent Research I	*TO BE ARRANGED*			tba	Staff	03

ECONOMICS

EC -101-A	Principles of Economics I	trf	1000	1050	tba	Farrar, W.	03
EC -101-B	Principles of Economics I	trf	1300	1350	tba	DeYoung, R.	03
EC -101-E	Principles of Economics I	t	1830	2115	tba	Healey, B.	03
EC -102-A	Principles of Economics II	uf	0800	0915	tba	DeYoung, R.	03
EC -102-B	Principles of Economics II	ntr	0900	0950	tba	Taylor, W.	03
EC -102-C	Principles of Economics II	ntr	1000	1050	tba	Taylor, W.	03
EC -102-D	Principles of Economics II	ntr	1300	1350	tba	Taylor, W.	03
EC -102-E	Principles of Economics II	t	1830	2115	tba	Staff	02
EC -198-A	T:Origins of Modern Capitalism	tr	1300	1415	tba	Engel, T.	03
EC -222-A	The American Labor Movement	mwf	0900	0950	tba	Chniola, J.	03
EC -224-A	Economic Development	tr	1400	1515	tba	Taylor, W.	03
EC -228-A	Econ Geography- Asia,AF,La	mwf	1000	1050	tba	Chniola, J.	03
EC -230-A	Business Cycles	trf	1400	1545	tba	Farrar, W.	03
	Accelerated						
EC -232-A	Laboratory	t	1400	1545	tba	Staff	00
EC -232-B	Laboratory	u	1300	1445	tba	Staff	00
EC -232-C	Laboratory	r	1500	1645	tba	Staff	00
EC -232-E	Laboratory	t	1600	1745	tba	Staff	00
EC -232-A	Applied Economic Statistic II	mwf	1200	1250	tba	Williams, W.	03
EC -232-B	Applied Economic Statistic II	mwf	1400	1450	tba	Williams, W.	03
EC -232-E	Applied Economic Statistic II	t	1830	2115	tba	Rash, F.	03
EC -236-A	Public Finance	trf	1000	1050	tba	DeYoung, R.	03
EC -396-A	Independent Research	*TO BE ARRANGED*			tba	Staff	01
EC -396-B	Independent Research	*TO BE ARRANGED*			tba	Staff	02
EC -396-C	Independent Research	*TO BE ARRANGED*			tba	Staff	03
EC -398-A	T: Intro to Women's Studies	tr	1530	1700	tba	Taylor, W.	03
EC -505-E	Managerial Statistics	n	1800	2050	DDU 101	Cordora, R.	03
EC -506-E	Labor Management Economics	u	1800	2050	tba	Chniola, J.	03
EC -510-E	Managerial Economics	n	1800	2050	SLC 359	Williams, W.	03
EC -510-E1	Managerial Economics	u	1800	2050	SLC 342	Williams, W.	03

EDUCATION

ED -101-A	Practicum in Education	f	1000	1300	tba	Johnson, E.	01
	*1/16 only mt wth Mr. Johnson						
ED -102-A	Practicum in Education	f	1000	1300	tba	Johnson, E.	01
	*1/6 only, mt wth Mr. Johnson						
ED -103-A	Practicum in Education	f	1000	1300	tba	Johnson, E.	01
	*1/16 only, mt wth Mr. Johnson						
ED -201-A	Introduction to Education	tr	0930	1045	tba	Barte, F.	03
ED -202-A	Educational Psychology	mwf	1300	1415	tba	Ginsburgh, Dr.	03
ED -202-B	Educational Psychology	mwf	1600	1715	tba	Ginsburgh, Dr.	03
ED -203-A	Special Methods of Teaching	tr	1300	1415	tba	Fuller, R.	03
ED -302-A	Children's Literature	mwf	1000	1050	tba	Meyers, G.	02

COURSE NUMBER	COURSE TITLE	DAY	START TIME	END TIME	BUILDING ROOM	INSTRUCTOR	CR
---------------	--------------	-----	------------	----------	---------------	------------	----

EDUCATION

ED -500-E1	Computer Literacy-Secondary	n	1800	2100	SLC 127	Koch, J.	03
ED -582-A	Pascal	n	1900	2130	SLC 424	Pryor, R.	03
ED -598-E	T:Creativity in Elen Classroom	n	1800	2100	SLC 160	Polachek, D.	03

ENGINEERING

EE -212-A	Circuit Theory II	mwf	0900	0950	tba	Choudhry, V.	03
EE -212-B	Circuit Theory II	uf	1300	1415	tba	Srinivasan, T.	03
EE -212-E	Circuit Theory II	tr	1830	1945	tba	Srinivasan, T.	03
EE -232-A	Electronics II	mwf	1300	1415	tba	Farooq, N.	03
EE -232-E	Electronics II	tr	2000	2115	tba	Farooq, N.	03
EE -254-A	Electronic Laboratory II	n	1430	1720	tba	Arora, V.	01
EE -254-B	Electronic Laboratory II	t	1430	1720	tba	Arora, V.	01
EE -254-C	Electronic Laboratory II	u	0800	1050	tba	Arora, V.	01
EE -254-D	Electronic Laboratory II	f	1430	1720	tba	Farooq, N.	01
EE -254-E	Electronic Laboratory II	u	1830	2120	tba	Farooq, N.	01
EE -272-A	Solid State Devices	tr	1300	1415	tba	Arora, V.	03
EE -272-E	Solid State Devices	mwf	2000	2115	tba	Arora, V.	03
EE -314-E	Control Systems	tr	2000	2115	tba	Ghorieshi, A.	03
EE -332-A	Electromagnetics II	mwf	1100	1150	tba	Ghorieshi, A.	03
EE -332-B	Electromagnetics II	mwf	1200	1250	tba	Janaswamy, R.	03
EE -332-E	Electromagnetics II	tr	1830	1945	tba	Ghorieshi, A.	03
EE -334-A	Electromagnetics Lab II	n	0800	1050	tba	Kucirka, J.	01
EE -334-B	Electromagnetics Lab II	u	1430	1720	tba	Choudhry, V.	01
EE -334-C	Electromagnetics Lab II	r	1430	1720	tba	Choudhry, V.	01
EE -334-D	Electromagnetics Lab II	f	0800	1050	tba	Kucirka, J.	01
EE -334-E	Electromagnetics Lab II	t	1800	2150	tba	Janaswamy, R.	01
EE -342-A	Microcomputer Oper & Design	t	0900	1050	tba	Mohseni, S.	03
EE -342-A1	Laboratory	u	0900	1050	tba	Mohseni, S.	00
EE -342-A2	Laboratory	u	1500	1650	tba	Mohseni, S.	00
EE -342-A3	Laboratory	r	0900	1050	tba	Mohseni, S.	00
EE -342-E	Microcomputer Oper & Design	u	1800	1950	tba	Mohseni, S.	03
EE -342-E1	Laboratory	n	1800	1950	tba	Mohseni, S.	00
EE -346-A	Computer Architecture	tr	0930	1045	tba	Koch, J.	03
EE -376-A	Opto - Electronic Engineering	mwf	1430	1545	tba	Janaswamy, R.	03
EE -382-A	Communications & Antenna Lab	n	0800	1350	tba	Arnaud, A.	04
EE -382-B	Communications & Antenna Lab	t	1300	1845	tba	Veroushalni, M	04
ED -382-E	Children's Literature	t	1630	1815	tba	Meyers, G.	02
ED -322-A	Lang Arts and Social Studies	tr	1430	1545	tba	Barte, F.	03
ED -322-E	Lang Arts and Social Studies	r	1700	1945	tba	Barte, F.	03
ED -324-A	Arts in Early Child & Elen	n	1300	1445	tba	Fuller, R.	02
ED -324-B	Arts in Early Child & Elen	n	1500	1645	tba	Fuller, R.	02
ED -362-E	Instruct in Early Childhood	n	1830	2115	tba	Meyers, G.	03
ED -371-A	The Individual in the Class	mwf	1600	1715	tba	Polachek, D.	03
ED -381-A	Professional Practicum	nturf	0800	1600	tba	Johnson, E.	04
ED -382-A	Intern Teaching	nturf	0800	1600	tba	Johnson, E.	11
ED -398-E	T:Creativity in the Elen Clsm	n	1800	2045	tba	Polachek, D.	03
ED -510-A	Psychological Foundations	mwf	1600	1730	SLC 204	Ginsburgh, Dr.	03
ED -511-E	Philosophical Foundations	n	1800	2100	SLC 411	Fahvy, N.	03
ED -522-A	Ed Stats & Computer Simulation	n	1630	1859	SLC 424	Bellucci, J.	03
ED -531-A	Children's Literature	t	1630	1815	SLC 204	Meyers, G.	03
ED -532-A	Problems in Elementary Ed I	u	1800	2100	Kirby 102	Polachek, D.	03
ED -532-B	Problems in Elementary Ed I	t	1800	2100	Kirby 102	Barte, F.	03
ED -533-B	Problems in Elementary Ed II	n	1800	2100	SLC 150	Placek, W.	03
ED -550-A	Project T.E.A.C.H.	*TO BE ARRANGED*			tba	Staff	03
ED -551-A	Project P.R.I.D.E.	*TO BE ARRANGED*			tba	Staff	03
ED -552-A	Tching Through Lrning Channels	*TO BE ARRANGED*			tba	Staff	03
ED -580-E	Computer Literacy-Elementary	u	1800	2100	SLC 127	Pryor, R.	03

WILKES COLLEGE MASTER SCHEDULE SPRING 1987

A3

COURSE NUMBER	COURSE TITLE	DAY	START TIMES	END TIMES	BUILDING ROOM	INSTRUCTOR	CR
ENGINEERING							
EE -382-C	Communications & Antenna Lab	u	0800	1350	tba	Armand, A.	04
EE -382-B	Communications & Antenna Lab	r	1300	1850	tba	Veroushalvi, M	04
EE -382-E	Communications & Antenna Lab	n	1700	2300	tba	Janaswamy, R.	04
EE -382-E1	Communications & Antenna Lab	u	1700	2300	tba	Armand, A.	04
EE -392-A	Senior Projects II	*TO BE ARRANGED*		tba	Mejib, U.	02	
EE -392-E	Senior Projects II	*TO BE ARRANGED*		tba	Mejib, U.	02	
EE -396-A	Independent Research	*TO BE ARRANGED*		tba	Staff	01	
EE -396-B	Independent Research	*TO BE ARRANGED*		tba	Staff	02	
EE -396-C	Independent Research	*TO BE ARRANGED*		tba	Staff	03	
EE -398-A	T: Power System Analysis	ruf	1200	1250	tba	Srinivasan, T.	03
EE -398-E	T: Interface Network Design	t	1800	1950	tba	Nohseni, S.	03
EE -398-E1	Laboratory	r	1800	1950	tba	Nohseni, S.	00
EE -414-E	Control Systems	tr	2000	2115	tba	Chorieshi, A.	03
EE -432-E	Electromagnetic Fields & Waves	r	1830	2115	tba	Hostler, L.	03
EE -482-E	Adv. Communication & Antenna	n	1700	2300	tba	Janaswamy, R.	03
EE -482-E1	Adv. Communication & Antenna	u	1700	2300	tba	Armand, A.	03
EE -498-E	T: Circuit Design	n	1830	2115	tba	Choudhry, U.	03
EGR-224-A	Heat and Mass Transfer	tr	1430	1545	tba	Kucirka, J.	03
EGR-224-E	Heat and Mass Transfer	tr	2000	2115	tba	Kucirka, J.	03
EGR-232-A	Strength of Materials	ruf	1400	1450	tba	Razavi, A.	03
EGR-244-A	Fortran Programming	ruf	0900	0950	tba	Simmons, J.	03
EGR-244-B	Fortran Programming	ruf	1000	1050	tba	Plavchak, T.	03
EGR-244-C	Fortran Programming	ruf	1400	1450	tba	Plavchak, T.	03
EGR-247-A	Advanced Prog-Pascal	ntuf	0900	0950	tba	DeCosmo, J.	04
EGR-284-A	Measurement Lab II	n	1500	1650	tba	Janecek, J.	01
EGR-284-B	Measurement Lab II	t	0800	0950	tba	Janecek, J.	01
EGR-284-C	Measurement Lab II	t	1500	1650	tba	Janecek, J.	01
EGR-284-D	Measurement Lab II	u	1500	1650	tba	Van, J.	01
EGR-284-E	Measurement Lab II	r	1830	2030	tba	Van, J.	01
EGR-342-A	Machine Language	tr	0800	0930	tba	Tillman, S.	03
EGR-374-A	Management of Industrial Engr	tr	0930	1045	tba	Van, J.	03
EGR-376-A	Engineering & Mngmt Models	tr	1430	1545	tba	Van, J.	03
EGR-392-A	Senior Projects II	*TO BE ARRANGED*		tba	Mejib, U.	02	
EGR-396-A	Independent Research	*TO BE ARRANGED*		tba	Staff	01	
EGR-396-B	Independent Research	*TO BE ARRANGED*		tba	Staff	02	
EGR-396-C	Independent Research	*TO BE ARRANGED*		tba	Staff	03	
MAE-210-A	Intro to Materials Engineer	ruf	1200	1250	tba	Razavi, A.	03
MAE-210-E	Intro to Materials Engineer	ru	2000	2115	tba	Razavi, A.	03
MAE-234-A	Electro Chemistry	ruf	1100	1150	tba	Orehotsky, J.	03
MAE-322-E	Thermo & Phase Equilibria II	n	1800	1950	tba	Janecek, J.	03
MAE-322-E1	Laboratory	u	1800	1950	tba	Janecek, J.	00
MAE-392-E	Senior Projects II	*TO BE ARRANGED*		tba	Mejib, U.	02	
MAE-396-A	Independent Research	*TO BE ARRANGED*		tba	Staff	01	
MAE-396-B	Independent Research	*TO BE ARRANGED*		tba	Staff	02	
MAE-396-C	Independent Research	*TO BE ARRANGED*		tba	Staff	03	
MAE-398-E	T: Advanced Phase Diagrams	r	1830	2115	tba	Janecek, J.	03
ENGLISH							
ENG-101-A	Composition I	tr	1430	1545	tba	Evans, D.	03
ENG-102-A	Composition II	ruf	0800	0850	tba	Hazur, J.	03
ENG-102-AA	Composition II	tr	1300	1415	tba	Hearman, P.	03
ENG-102-B	Composition II	tr	0800	0930	tba	Anderson, B.	03
ENG-102-C	Composition II	ruf	0900	0950	tba	Hazur, J.	03
ENG-102-D	Composition II	tr	0930	1100	tba	Anderson, B.	03
ENG-102-E	Composition II	n	1830	2115	tba	Staff	03
ENG-102-F	Composition II	ruf	1000	1050	tba	Martin, T.	03
ENG-102-G	Composition II	tr	0800	0915	tba	Staff	03
ENG-102-H	Composition II	ruf	1100	1150	tba	Anderson, B.	03

COURSE NUMBER	COURSE TITLE	DAY	START TIMES	END TIMES	BUILDING ROOM	INSTRUCTOR	CR
GERMAN							
GR -102-A	Elementary German II	ruf	1100	1150	tba	Karpnich, M.	03
GR -102-A1	Laboratory	n	1500	1529	tba	Staff	00
GR -102-A2	Laboratory	t	1400	1429	tba	Staff	00
GR -102-A3	Laboratory	u	1400	1429	tba	Staff	00

WILKES COLLEGE MASTER SCHEDULE SPRING 1987

A4

COURSE NUMBER	COURSE TITLE	DAY	START TIMES	END TIMES	BUILDING ROOM	INSTRUCTOR	CR
ENGLISH							
ENG-102-L	Composition II	ruf	1200	1250	tba	Evans, D.	03
ENG-102-M	Composition II	ruf	1300	1350	tba	Evans, D.	03
ENG-102-N	Composition II	tr	1300	1415	tba	Staff	03
ENG-102-O	Composition II	ruf	1400	1450	tba	Terry, L.	03
ENG-102-P	Composition II	tr	1430	1545	tba	Staff	03
ENG-102-Q	Composition II	tr	0930	1045	tba	Hearman, R.	03
ENG-102-R	Composition II	trf	1000	1050	tba	Cutin, S.	03
ENG-102-S	Composition II	trf	1300	1350	tba	Cutin, S.	03
ENG-102-T	Composition II	ru	1500	1615	tba	Terry, L.	03
ENG-151-A	Western World Literature I	ruf	1200	1250	tba	Anderson, B.	03
ENG-151-B	Western World Literature I	tr	1300	1415	tba	Evans, D.	03
ENG-152-A	Western World Literature II	trf	0900	0950	tba	Cutin, S.	03
ENG-152-B	Western World Literature II	ntr	1000	1050	tba	Kaska, T.	03
ENG-152-C	Western World Literature II	ruf	1100	1150	tba	Terry, L.	03
ENG-152-D	Western World Literature II	ruf	1300	1350	tba	Fiestier, B.	03
ENG-152-E	Western World Literature II	r	1830	2115	tba	Kaska, T.	03
ENG-152-E1	Western World Literature II	t	1830	2115	tba	Rizzo, P.	03
ENG-152-F	Western World Literature II	trf	1400	1450	tba	Cutin, S.	03
ENG-152-H	Western World Literature II	t	1300	1545	tba	Fiestier, B.	03
ENG-222-A	Introduction to Linguistics	ru	1500	1615	tba	Rizzo, P.	03
ENG-254-A	Survey of English Lit II	ruf	1400	1450	tba	Fiestier, B.	03
ENG-298-A	T: Science & Humanities	tr	1430	1545	tba	Kaska, T.	03
ENG-298-B	T: English as a second language	ruf	1200	1250	tba	Slaff, J.	03
ENG-298-C	T: The Bible as Literature	ntr	1300	1350	tba	Kaska, T.	03
ENG-360-A	Victorian Prose & Poetry	ruf	1000	1050	Kirby 102	Terry, L.	03
ENG-382-A	American Literature II	tr	1500	1615	Bedford11	Cutin, S.	03
ENG-384-A	American Drama	ruf	0900	0950	CPA 9	O'Neill W.	03
ENG-392-A	Projects in Writing	*TO BE ARRANGED*		tba	Staff	01	
ENG-392-B	Projects in Writing	*TO BE ARRANGED*		tba	Staff	02	
ENG-392-C	Projects in Writing	*TO BE ARRANGED*		tba	Staff	03	
ENG-396-A	Independent Research	*TO BE ARRANGED*		tba	Staff	01	
ENG-396-B	Independent Research	*TO BE ARRANGED*		tba	Staff	02	
ENG-396-C	Independent Research	*TO BE ARRANGED*		tba	Staff	03	
ENG-397-E	S: Modern British Literature	tr	1430	1545	Kirby 302	Hearman, P.	03
ENG-470-E	Modern British Literature	tr	1430	1545	Kirby 302	Hearman, P.	03
FRENCH							
FR -102-A	Elementary French II	ruf	1100	1150	tba	Martin, T.	03
FR -102-A1	Laboratory	n	1300	1329	tba	Staff	00
FR -102-A2	Laboratory	t	1500	1529	tba	Staff	00
FR -102-A3	Laboratory	u	1400	1429	tba	Staff	00
FR -102-A4	Laboratory	r	1300	1329	tba	Staff	00
FR -102-A5	Laboratory	f	1000	1029	tba	Staff	00
FR -204-A	Intermediate French II	ruf	1300	1350	tba	Martin, T.	03
FR -204-A1	Laboratory	n	1330	1359	tba	Staff	00
FR -204-A2	Laboratory	t	1530	1559	tba	Staff	00
FR -204-A3	Laboratory	u	1430	1459	tba	Staff	00
FR -204-A4	Laboratory	r	1330	1359	tba	Staff	00
FR -204-A5	Laboratory	f	1030	1059	tba	Staff	00
FR -298-A	T: Business French	ruf	1400	1450	tba	Martin, T.	03

COURSE NUMBER	COURSE TITLE	DAY	START TIMES	END TIMES	BUILDING ROOM	INSTRUCTOR	CR
MATHEMATICS & COMPUTER SCIENCE							
CS -225-A	Advanced Prog-Pascal	ntuf	0900	0950	tba	DeCosmo, J.	04
CS -230-A	Machine Language	tr	0800	0850	tba		

ENG-102-B	Composition II	tr	0800	0930	tba	Anderson, B.	03
ENG-102-C	Composition II	ruf	0900	0950	tba	Nazur, J.	03
ENG-102-D	Composition II	tr	0930	1100	tba	Anderson, B.	03
ENG-102-E	Composition II	n	1830	2115	tba	Staff	03
ENG-102-F	Composition II	ruf	1000	1050	tba	Martin, T.	03
ENG-102-G	Composition II	tr	0800	0915	tba	Staff	03
ENG-102-I	Composition II	ruf	1100	1150	tba	Anderson, B.	03
ENG-102-J	Composition II	ruf	1200	1250	tba	Beatty, B.	03

FR-298-A	I: Business French	ruf	1400	1450	tba	Staff	00
						Martin, T.	03

COURSE NUMBER	COURSE TITLE	DAY	START TIME	END TIME	BUILDING ROOM	INSTRUCTOR	CR
GERMAN							
GR -102-A	Elementary German II	ruf	1100	1150	tba	Karpinich, W.	03
GR -102-A1	Laboratory	n	1500	1529	tba	Staff	00
GR -102-A2	Laboratory	t	1400	1429	tba	Staff	00
GR -102-A3	Laboratory	u	1300	1329	tba	Staff	00
GR -102-A4	Laboratory	r	1500	1529	tba	Staff	00
GR -102-A5	Laboratory	f	0900	0929	tba	Staff	00
GR -204-A	Intermediate German II	ruf	0900	0950	tba	Karpinich, W.	03
GR -204-A1	Laboratory	n	1530	1559	tba	Staff	00
GR -204-A2	Laboratory	t	1430	1459	tba	Staff	00
GR -204-A3	Laboratory	u	1330	1359	tba	Staff	00
GR -204-A4	Laboratory	r	1530	1559	tba	Staff	00
GR -204-A5	Laboratory	f	0930	0959	tba	Staff	00
HEALTH SCIENCE ADMINISTRATION							
HSA-502-E	Financial Mgmt Health Care	t	1800	2050	SLC 316	Staff	03
HSA-504-E	Planning For Health Care Inst	r	1800	2050	BBB 101	Healey, B.	03
HSA-512-E	Long Tern Care Adm	n	1800	2050	SLC 311	Staff	03
HSA-522-E	Market Research & Info Sys	u	1800	2050	BBB 101	Atzrott, A.	03
HSA-531-E	Accounting in Health Care	u	1800	2050	SLC 204	Crabo, T.	03
HSA-540-E	Labor/Mgmt Relations	*TO BE ARRANGED*			tba	Healey, B.	03
HISTORY							
HST-101-E	World Civilization I	u	1830	2115	tba	Staff	03
HST-102-A	World Civilization II	tr	0800	0915	tba	Cox, H.	03
HST-102-B	World Civilization II	ruf	0900	0950	tba	Berlatsky, J.	03
HST-102-C	World Civilization II	ruf	1000	1050	tba	Shao, K.	03
HST-102-D	World Civilization II	ruf	1100	1150	tba	Bauzon, K.	03
HST-102-E	World Civilization II	t	1830	2115	tba	Cox, H.	03
HST-102-F	World Civilization II	ruf	1300	1350	tba	Shao, K.	03
HST-102-G	World Civilization II	ruf	1400	1450	tba	Shao, K.	03
HST-198-A	I: Man and Machines	tr	0930	1045	tba	Cox, H.	03
HST-198-B	I:Origins of Modern Capitalism	tr	1300	1415	tba	Berlatsky, J.	03
HST-208-A	American History II	tr	0930	1045	tba	Meyers J.	03
HST-321-E	American Social History	n	1830	2115	tba	Cox, H.	03
HST-342-A	British Empire II	ruf	1000	1050	tba	Berlatsky, J.	03
HST-356-A	Europe in the 20th Century	ruf	0900	0950	tba	Shao, K.	03
HST-398-A	I: The Holocaust	tr	0930	1045	tba	Staff	03
HST-398-B	I:The Constitution:200 years	tr	1300	1415	tba	Behuniak-Long	03
MATHEMATICS & COMPUTER SCIENCE							
CS -115-A	Survey of Computers and DP	ruf	0800	0850	tba	DeCosmo, J.	03
CS -115-B	Survey of Computers and DP	ruf	1100	1150	tba	Salsburg, J.	03
	Apple MacIntosh						
CS -115-C	Survey of Computers and DP	ruf	1200	1250	tba	Salsburg, J.	03
	Apple MacIntosh						
CS -115-D	Survey of Computers and DP	trf	1300	1350	tba	Hong, B.	03
	IBM-PC						
CS -115-E	Survey of Computers and DP	tr	1830	1945	tba	Staff	03
CS -115-F	Survey of Computers and DP	trf	1400	1450	tba	Hong, B.	03
CS -123-A	Fortran Programming	ruf	0900	0950	tba	Simmons, J.	03
CS -123-B	Fortran Programming	ruf	1000	1050	tba	Simmons, J.	03
CS -123-C	Fortran Programming	ruf	1400	1450	tba	Plavchak, T.	03
CS -124-A	Cobol Programming	ruf	1100	1150	tba	DeCosmo, J.	03
CS -124-B	Cobol Programming	ruf	1200	1250	tba	DeCosmo, J.	03
CS -224-E	Advanced Cobol	tr	1830	1945	tba	Pryor, R.	03

WILKES COLLEGE MASTER SCHEDULE SPRING 1987

A5

COURSE NUMBER	COURSE TITLE	DAY	START TIME	END TIME	BUILDING ROOM	INSTRUCTOR	CR
MATHEMATICS & COMPUTER SCIENCE							
CS-225-A	Advanced Prog-Pascal	ntuf	0900	0950	tba	DeCosmo, J.	04
CS-230-A	Machine Language	tr	0800	0930	tba	Koch, J.	03
CS-262-A	Operations Research	rw	1500	1615	tba	Tillman, S.	03
CS-325-A	Data Base Management	ruf	1200	1250	tba	Tillman, S.	03
CS-327-A	Compiler Design	ruf	1400	1450	tba	Simmons, J.	03
CS-329-A	Microcomputer Oper. & Design	t	0900	1050	tba	Mohseni, S.	03
CS-329-A1	Laboratory	u	0900	1050	tba	Mohseni, S.	00
CS-329-A2	Laboratory	u	1500	1650	tba	Mohseni, S.	00
CS-329-A3	Laboratory	r	0900	1050	tba	Mohseni, S.	00
CS-329-E	Microcomputer Oper. & Design	u	1800	1950	tba	Mohseni, S.	03
CS-329-E1	Laboratory	n	1800	1950	tba	Mohseni, S.	00
CS-330-A	Computer Architecture	tr	0930	1045	tba	Koch, J.	03
NTH-100-A	Pre-Calculus Mathematics	tr	1400	1545	tba	Koch, M.	04
NTH-102-A	Fundamentals of Math II	ruf	0800	0850	tba	Salsburg, J.	03
NTH-102-B	Fundamentals of Math II	ruf	0900	0950	tba	Salsburg, J.	03
NTH-102-C	Fundamentals of Math II	ruf	1400	1450	tba	Kenney, E.	03
NTH-102-E	Fundamentals of Math II	tr	2000	2115	tba	Staff	03
NTH-105-A	Introduction Calculus I	ruf	1300	1350	tba	Simmons, J.	04
NTH-106-A	Introduction Calculus II	ntuf	0800	0850	tba	Staff	04
NTH-106-B	Introduction Calculus II	ruf	1300	1350	tba	Kenney, E.	04
NTH-106-C	Introduction Calculus II	ruf	1300	1350	tba	Plavchak, T.	04
NTH-111-A	Calculus I	ruf	1200	1250	tba	Staff	04
		t	1300	1350	tba		
NTH-111-E	Calculus I	tr	1800	1945	tba	Costello, A.	04
NTH-112-A	Calculus II	ruf	1000	1050	tba	Kenney, E.	04
NTH-112-B	Calculus II	ntuf	1400	1450	tba	Sours, R.	04
NTH-112-E	Calculus II	u	1800	1945	tba	Staff	04
NTH-150-A	Elementary Statistics	ruf	1000	1050	tba	Berard, L.	03
NTH-150-B	Elementary Statistics	ruf	1100	1150	tba	Berard, L.	03
NTH-150-C	Elementary Statistics	ruf	1300	1350	tba	Tillman, S.	03
NTH-202-A	Set Theory and Logic	ruf	0800	0850	tba	Earl, B.	03
		t	1300	1350	tba		
NTH-202-B	Set Theory and Logic	ruf	0900	0950	tba	Earl, B.	03
		t	1400	1450	tba		
NTH-203-A	Teaching Math in Sec Schools	ruf	1100	1150	tba	Earl, B.	03
NTH-212-A	Multivariate Calculus	ntuf	1000	1050	tba	Hong, B.	04
NTH-212-E	Multivariate Calculus	rw	1800	1945	tba	Plavchak, T.	04
NTH-214-A	Linear Algebra	ruf	1500	1550	tba	Berard, L.	03
NTH-243-A	Geom for Elem Teachers	tr	0800	0915	tba	Earl, B.	03
NTH-243-B	Geom for Elem Teachers	tr	0930	1045	tba	Earl, B.	03
NTH-262-A	Operations Research	rw	1500	1615	tba	Tillman, S.	03
NTH-352-A	Probability & Statistics I	ruf	0900	0950	SLC 441	Berard, L.	03
NTH-362-A	Intro to Applied Math II	ruf	0900	0950	SLC 405	Staff	03
NTH-364-A	Numerical Analysis	ruf	1100	1150	SLC 409	Sours, R.	03
NTH-432-A	Intro to Abstract Algebra II	tr	1300	1415	SLC 405	Berard, L.	03
MUSIC							
MUS-010-A	Functional Piano	rw	0800	0850	tba	Santos, R.	00
MUS-010-B	Functional Piano	nf	1300	1350	tba	Santos, R.	00
MUS-011-A	Functional Guitar	*TO BE ARRANGED*			tba	Staff	00
MUS-100-A	Applied Performance	*TO BE ARRANGED*			tba	Staff	00
MUS-100-A1	Applied Performance	*TO BE ARRANGED*			tba	Staff	01
MUS-100-A2	Applied Performance	*TO BE ARRANGED*			tba	Staff	02
MUS-100-B	Applied Performance	*TO BE ARRANGED*			tba	Staff	00
MUS-100-B1	Applied Performance	*TO BE ARRANGED*			tba	Staff	01
MUS-100-B2	Applied Performance	*TO BE ARRANGED*			tba	Staff	02
MUS-101-A	Introduction to Music I	ruf	0900	0950	tba	Garber, H.	03

COURSE NUMBER	COURSE TITLE	DAY	START TIMES	END TIMES	BUILDING ROOM	INSTRUCTOR	CR
MUSIC							
MUS-101-B	Introduction to Music I	rwf	1000	1050	tba	Garber, H.	03
MUS-101-C	Introduction to Music I	tr	0930	1045	tba	Norwitz, H.	03
MUS-101-E	Introduction to Music I	t	1830	2115	tba	Santos, R.	03
MUS-104-A	Comprehensive Musicianship II	tr	0830	0920	tba	Reiprich, B.	02
MUS-106-A	Harmonic Foundations II	rwf	0900	0950	tba	Reiprich, B.	03
MUS-108-A	Analysis of Music II	rwf	1000	1050	tba	Norwitz, H.	03
MUS-112-A	Class Piano II	rw	0800	0950	tba	Santos, R.	02
MUS-112-B	Class Piano II	nf	1300	1350	tba	Santos, R.	02
MUS-121-A	Hind Ensemble	n	1600	1720	tba	Campbell, J.	01
		u	1830	1945	tba		
MUS-125-A	Chorus	tr	1600	1720	tba	Vaida, J.	01
MUS-126-A	Cap and Bell Singers	u	1600	1720	tba	Chapline, R.	01
MUS-127-A	Jazz Ensemble	t	1800	1950	tba	Staff	01
MUS-128-A	Chamber Performance	*TO BE ARRANGED*			tba	Norwitz, H.	01
MUS-131-A	College Orchestra	t	1900	2050	tba	Garber, H.	01
MUS-200-A	Applied Performance	*TO BE ARRANGED*			tba	Staff	00
MUS-200-A1	Applied Performance	*TO BE ARRANGED*			tba	Staff	01
MUS-200-A2	Applied Performance	*TO BE ARRANGED*			tba	Staff	02
MUS-200-B	Applied Performance	*TO BE ARRANGED*			tba	Staff	00
MUS-200-B1	Applied Performance	*TO BE ARRANGED*			tba	Staff	01
MUS-200-B2	Applied Performance	*TO BE ARRANGED*			tba	Staff	02
MUS-204-A	Comprehensive Musicianship IV	rwf	0900	0950	tba	Santos, R.	02
MUS-206-A	Harmonic Foundations IV	rwf	0800	0850	tba	Reiprich, B.	03
MUS-208-A	Analysis of Music IV	rwf	1000	1050	tba	Reiprich, B.	03
MUS-212-A	Keyboard Accompanying	*TO BE ARRANGED*			tba	Newson, R.	02
MUS-213-A	Accompanying Practicum I	*TO BE ARRANGED*			tba	Newson, R.	01
MUS-214-A	Accompanying Practicum II	*TO BE ARRANGED*			tba	Newson, R.	01
MUS-215-A	Accompanying Practicum III	*TO BE ARRANGED*			tba	Newson, R.	01
MUS-252-A	Teaching of General Music	u	1400	1545	tba	Sanderson, M.	02
MUS-253-A	Brass Methods	tr	1400	1450	tba	Campbell, J.	02
MUS-256-A	String Methods	nf	1400	1450	tba	Garber, H.	02
MUS-259-A	Voice Diction	rw	1500	1550	tba	Staff	02
MUS-261-A	Choral Conducting II	tr	1500	1550	tba	Staff	02
MUS-262-A	Instrumental Conducting II	tr	1500	1550	tba	Staff	02
MUS-300-A	Applied Performance	*TO BE ARRANGED*			tba	Staff	00
MUS-300-A1	Applied Performance	*TO BE ARRANGED*			tba	Staff	01
MUS-300-A2	Applied Performance	*TO BE ARRANGED*			tba	Staff	02
MUS-300-B	Applied Performance	*TO BE ARRANGED*			tba	Staff	00
MUS-300-B1	Applied Performance	*TO BE ARRANGED*			tba	Staff	01
MUS-300-B2	Applied Performance	*TO BE ARRANGED*			tba	Staff	02
MUS-301-A	Junior Recital	*TO BE ARRANGED*			tba	Staff	00
MUS-306-A	20th Century Theory	tr	0930	1020	tba	Reiprich, B.	02
MUS-311-A	Woodwind Pedagogy	*TO BE ARRANGED*			tba	Staff	03
MUS-313-A	Brass Pedagogy	*TO BE ARRANGED*			tba	Staff	03
MUS-397-A	S:Contemporary Music Ensemble	u	1500	1550	tba	Reiprich, B.	01
MUS-397-B	S:Jazz Improvization	*TO BE ARRANGED*			tba	Staff	01
MUS-397-C	S:Jazz Comp. and Arrangement	*TO BE ARRANGED*			tba	Staff	01
MUS-400-A	Applied Performance	*TO BE ARRANGED*			tba	Staff	00
MUS-400-A1	Applied Performance	*TO BE ARRANGED*			tba	Staff	01
MUS-400-A2	Applied Performance	*TO BE ARRANGED*			tba	Staff	02
MUS-400-B	Applied Performance	*TO BE ARRANGED*			tba	Staff	00
MUS-400-B1	Applied Performance	*TO BE ARRANGED*			tba	Staff	01
MUS-400-B2	Applied Performance	*TO BE ARRANGED*			tba	Staff	02
MUS-401-A	Senior Recital	*TO BE ARRANGED*			tba	Staff	00
MUS-407-A	Voice Literature	*TO BE ARRANGED*			tba	Staff	03
MUS-409-A	Keyboard Literature	rwf	1000	1050	tba	Newson, R.	03

COURSE NUMBER	COURSE TITLE	DAY	START TIMES	END TIMES	BUILDING ROOM	INSTRUCTOR	CR
PHYSICAL EDUCATION							
PE-148-A	Volleyball & Basketball-Men	rw	0900	0950	JCC G	Schmidt, R.	00

COURSE NUMBER	COURSE TITLE	DAY	START TIMES	END TIMES	BUILDING ROOM	INSTRUCTOR	CR
NURSING							
NSC-202-A	Nursing Care Young Client	rw	1300	1445	tba	Simons, J.	08
NSC-202-E	Nursing Care Young Client	rw	1830	2015	tba	Simons, J.	08
NSC-204-A	Nursing Care Adult Client II	rw	1500	1645	tba	Steelman, J.	08
NSC-204-E	Nursing Care Adult Client II	rw	1830	2015	tba	Steelman, J.	08
NSC-272-E	Clinical Applic. Pharmacology	t	1830	2115	tba	Zack, C.	03
NSC-298-A	T:Health Hazards in Arts	f	0900	1145	tba	Crabo, T.	02
	First 10 weeks only						
NSC-298-B	T:Health Hazards in Arts	f	0900	1145	tba	Crabo, T.	03
NSC-302-A	Senior Practicum	n	1300	1545	tba	Saueraker, H.	08
NSC-302-E	Senior Practicum	n	1830	2115	tba	Saueraker, H.	08
NSC-303-A	Issues and Trends in Nursing	rw	0800	0950	tba	Saueraker, H.	03
NSC-303-B	Issues and Trends in Nursing	nf	1000	1150	tba	Saueraker, H.	03
NSC-303-C	Issues and Trends in Nursing	rw	1600	1750	tba	Saueraker, H.	03
NSC-398-A	T: Intro to Women's Studies	tr	1530	1700	tba	Steelman, J.	03
NSC-398-E	T: Critical Care Nursing	n	1830	2115	tba	Baker, P.	03
PHILOSOPHY							
PHL-101-E	Introduction to Philosophy	n	1830	2115	tba	Staff	03
PHL-101-E1	Introduction to Philosophy	u	1830	2115	SLC 359	Staff	03
PHL-101-E2	Introduction to Philosophy	t	1830	2115	tba	Staff	03
PHL-152-A	Introduction to Logic	nf	0800	0850	tba	Newson, D.	03
PHL-152-A1	Discussion	t	0900	0950	tba	Newson, D.	00
PHL-152-A2	Discussion	t	1000	1050	tba	Newson, D.	00
PHL-152-A3	Discussion	t	1300	1350	tba	Newson, D.	00
PHL-152-A4	Discussion	t	1400	1450	tba	Newson, D.	00
PHL-214-E	Medical Ethics	r	1830	2115	tba	Staff	03
PHL-298-A	T: Critical Thinking	rwf	1000	1050	tba	Newson, D.	03
	Substitute for Phil 101						
PHL-298-B	T: Critical Thinking	rwf	1100	1150	tba	Newson, D.	03
	Substitute for Phil 101						
PHYSICAL EDUCATION							
PE-101-A	Intercollegiate Athletics	*TO BE ARRANGED*			tba	Saracino, B.	00
PE-115-A	Weight Training-Women	rwf	0900	0950	Neckesr0	Saracino, B.	00
PE-115-B	Weight Training-Women	rwf	1000	1050	Neckesr0	Saracino, B.	00
PE-115-C	Weight Training-Women	rwf	1100	1150	Neckesr0	Saracino, B.	00
PE-116-A	Weight Training-Men	tr	0800	0850	Neckesr0	Unsworth, B.	00
PE-116-B	Weight Training-Men	tr	0900	0950	Neckesr0	Unsworth, B.	00
PE-120-AA	Beginning Bowling	rw	0900	0950	JCC B	Kest, J.	00
PE-120-BB	Beginning Bowling	rw	1000	1050	JCC B	Kest, J.	00
PE-120-CC	Beginning Bowling	rw	1100	1150	JCC B	Kest, J.	00
PE-120-DD	Beginning Bowling	tr	0800	0850	JCC B	Rainey, R.	00
PE-120-ff	Beginning Bowling	tr	0900	0950	JCC B	Rainey, R.	00
PE-121-AA	Advanced Bowling	tr	1000	1050	JCC B	Rainey, R.	00
PE-125-AA	Beginning Badminton	rwf	0900	0950	Cyn 0	Rainey, R.	00
PE-125-BB	Beginning Badminton	rwf	1000	1050	Cyn 0	Rainey, R.	00
PE-125-CC	Beginning Badminton	rwf	1200	1250	Cyn 0	Rainey, R.	00
PE-125-DD	Beginning Badminton	rwf	1300	1350	Cyn 0	Saracino, B.	00
PE-126-AA	Advanced Badminton	rwf	1100	1150	Cyn 0	Rainey, R.	00
PE-130-AA	Aerobic Dance	tr	0900	0950	Cyn 0	Kest, J.	00
PE-130-BB	Aerobic Dance	tr	1000	1050	Cyn 0	Kest, J.	00
PE-136-AA	Fitness Activities-Jogging	rwf	1300	1350	Cyn 0	Kest, J.	00
PE-136-BB	Fitness Activities-Jogging	tr	1300	1350	Cyn 0	Rainey, R.	00
PE-140-AA	Beginning Golf	n	1300	1500	JCC C	Schmidt, R.	00
PE-140-BB	Beginning Golf	u	1300	1500	JCC C	Schmidt, R.	00

COURSE NUMBER	COURSE TITLE	DAY	START TIMES	END TIMES	BUILDING ROOM	INSTRUCTOR	CR
PHYSICS							

NUS-400-A2	Applied Performance	*TO BE ARRANGED*	tba	Staff	02
NUS-400-B	Applied Performance	*TO BE ARRANGED*	tba	Staff	00
NUS-400-B1	Applied Performance	*TO BE ARRANGED*	tba	Staff	01
NUS-400-B2	Applied Performance	*TO BE ARRANGED*	tba	Staff	02
NUS-401-A	Senior Recital	*TO BE ARRANGED*	tba	Staff	00
NUS-407-A	Voice Literature	*TO BE ARRANGED*	tba	Staff	03
NUS-409-A	Keyboard Literature	rwf	1000 1050 tba	Neuson, R.	03
NUS-411-A	Orchestral Literature	rwf	1100 1150 tba	Carber, N.	03
NUS-413-A	Brass Literature	*TO BE ARRANGED*	tba	Staff	03

COURSE NUMBER	COURSE TITLE	DAY	START TIME	END TIME	BUILDING ROOM	INSTRUCTOR	CR
---------------	--------------	-----	------------	----------	---------------	------------	----

PHYSICAL EDUCATION

PE -148-A	Volleyball & Basketball-Men	rwf	0900	0950	JCC	G	Schmidt, R.	00
PE -148-B	Volleyball & Basketball-Men	rwf	1000	1050	JCC	G	Schmidt, R.	00
PE -148-C	Volleyball & Basketball-Men	rwf	1100	1150	JCC	G	Schmidt, R.	00
PE -155-AA	Team Sports	tr	1300	1350	Gym	O	Schmidt, R.	00
PE -165-AA	Swim Instruction	tr	0900	0950	JCC	S	Wingert, P.	00
PE -165-BB	Swim Instruction	tr	1000	1050	JCC	S	Wingert, P.	00
PE -166-AA	Advanced Life Saving	rwf	1300	1350	JCC	S	Meyers, G.	00
PE -166-BB	Advanced Life Saving	rwf	1400	1450	JCC	S	Meyers, G.	00
PE -170-AA	Skiing	u	1600	2200	tba		Meyers, G.	00
	Elk Mountain-Fee							
PE -170-BB	Skiing	r	1300	1600	tba		Meyers, G.	00
	Elk Mountain-Fee							
PE -210-E	Contemporary Health Problems	u	1830	2115	SLC	209	Saracino, D.	02
PE -315-A	Emergency Care Techniques	rwf	1100	1150	tba		Aed, N.	03
	Red Cross Building							
PE -315-E	Emergency Care Techniques	t	1830	2115	tba		Aed, N.	03
	Red Cross Building							

PHYSICS

PHV-102-A	Physical Sciences II	rwf	1000	1050	tba		Placek, W.	03
PHV-102-A1	Discussion	t	0900	0950	tba		Placek, W.	00
PHV-102-A2	Discussion	t	1000	1050	tba		Placek, W.	00
PHV-102-A3	Discussion	t	1300	1350	tba		Placek, W.	00
PHV-102-A4	Discussion	t	1400	1450	tba		Placek, W.	00
PHV-102-E	Physical Sciences II	r	1800	1945	tba		Placek, W.	03
PHV-102-E1	Discussion	r	2000	2050	tba		Placek, W.	00
PHV-102-E2	Discussion	r	2100	2150	tba		Placek, W.	00
PHV-106-AA	Laboratory	n	1430	1720	tba		Maxwell, R.	00
PHV-106-AB	Laboratory	t	1430	1720	tba		Orehotsky, J.	00
PHV-106-AC	Laboratory	u	1430	1720	tba		Orehotsky, J.	00
PHV-106-AD	Laboratory	r	0800	1050	tba		Maxwell, R.	00
PHV-106-AE	Laboratory	u	1830	2130	tba		Hostler, L.	00
PHV-106-AF	Laboratory	r	1430	1720	tba		Orehotsky, J.	00
PHV-106-AG	Laboratory	f	1430	1720	tba		Staff	00
PHV-106-A	Introduction to Physics II	tr	1300	1350	tba		Bellas, F.	04
PHV-106-A1	Discussion	u	0800	0850	tba		Bellas, F.	00
PHV-106-A2	Discussion	u	0900	0950	tba		Bellas, F.	00
PHV-106-A3	Discussion	u	1000	1050	tba		Bellas, F.	00
PHV-201-AA	Laboratory	n	1430	1720	tba		Staff	00
PHV-201-AB	Laboratory	t	0800	1050	tba		Hostler, L.	00
PHV-201-AC	Laboratory	t	1430	1720	tba		Staff	00
PHV-201-AD	Laboratory	u	1430	1720	tba		Hostler, L.	00
PHV-201-AE	Laboratory	r	1430	1720	tba		Placek, W.	00
PHV-201-AF	Laboratory	f	1430	1720	tba		Placek, W.	00
PHV-201-A	General Physics I	rwf	1330	1415	tba		Hostler, L.	04
PHV-201-A1	Discussion	f	0800	0850	tba		Hostler, L.	00
PHV-201-A2	Discussion	f	1000	1050	tba		Hostler, L.	00
PHV-201-A3	Discussion	f	1300	1350	tba		Hostler, L.	00
PHV-202-AA	Laboratory	n	1430	1720	tba		Maxwell, R.	00
PHV-202-AB	Laboratory	t	1430	1720	tba		Orehotsky, J.	00
PHV-202-AC	Laboratory	u	1430	1720	tba		Orehotsky, J.	00
PHV-202-AD	Laboratory	r	0800	1050	tba		Maxwell, R.	00
PHV-202-AE	Laboratory	u	1830	2130	tba		Hostler, L.	00
PHV-202-AF	Laboratory	r	1430	1720	tba		Orehotsky, J.	00
PHV-202-AG	Laboratory	f	1430	1720	tba		Staff	00
PHV-202-A1	Discussion	f	0900	0950	tba		Orehotsky, J.	00
PHV-202-E	General Physics II	n	1730	1920	tba		Orehotsky, J.	04
PHV-202-E1	Discussion	n	1930	2020	tba		Orehotsky, J.	00
PHV-203-A	General Physics III	rwf	1100	1150	tba		Staff	03
PHV-210-A	Intro Materials Engineering	rwf	1200	1250	tba		Razavi, A.	03

PE -126-AA	Advanced Badminton	rwf	1100	1150	Gym	O	Rainey, R.	00
PE -130-AA	Aerobic Dance	tr	0900	0950	Gym	O	Kest, J.	00
PE -130-BB	Aerobic Dance	tr	1000	1050	Gym	O	Kest, J.	00
PE -136-AA	Fitness Activities-Jogging	rwf	1300	1350	Gym	O	Kest, J.	00
PE -136-BB	Fitness Activities-Jogging	tr	1300	1350	Gym	O	Rainey, R.	00
PE -140-AA	Beginning Golf	n	1300	1500	JCC	C	Schmidt, R.	00
PE -140-BB	Beginning Golf	u	1300	1500	JCC	C	Schmidt, R.	00
PE -140-CC	Beginning Golf	tr	0900	0950	JCC	C	Schmidt, R.	00
PE -140-DD	Beginning Golf	tr	1000	1050	JCC	C	Schmidt, R.	00

COURSE NUMBER	COURSE TITLE	DAY	START TIME	END TIME	BUILDING ROOM	INSTRUCTOR	CR
---------------	--------------	-----	------------	----------	---------------	------------	----

PHYSICS

PHV-210-E	Intro Materials Engineering	rwf	2000	2115	tba		Razavi, A.	03
PHV-302-A	Math Methods in Physics II	tr	0800	0915	tba		Bellas, F.	03
PHV-310-A	Analytical Mechanics	rwf	1000	1050	tba		Maxwell, R.	03
PHV-330-A	Optics & Light	rwf	0900	0950	tba		Maxwell, R.	04
PHV-330-A1	Laboratory	r	1430	1720	tba		Maxwell, R.	00
PHV-332-A	Electricity & Magnetism II	rwf	1100	1150	tba		Chorieshi, A.	03
PHV-332-B	Electricity & Magnetism II	rwf	1200	1250	tba		Janaswamy, R.	03
PHV-332-E	Electricity & Magnetism II	tr	1830	1945	tba		Chorieshi, A.	03
PHV-334-A	Electricity & Mag Lab II	n	0800	1050	tba		Kucirka, J.	01
PHV-334-B	Electricity & Mag Lab II	u	1430	1720	tba		Choudhry, V.	01
PHV-334-C	Electricity & Mag Lab II	r	1430	1720	tba		Choudhry, V.	01
PHV-334-D	Electricity & Mag Lab II	f	0800	1050	tba		Kucirka, J.	01
PHV-334-E	Electricity & Mag Lab II	t	1800	2150	tba		Janaswamy, R.	01
PHV-340-A	Thermodynamics	tr	0930	1050	tba		Bellas, F.	03
PHV-380-A	Nuclear Physics	rwf	1200	1250	tba		Staff	03
PHV-382-A	Nuclear Physics Laboratory	u	1430	1720	tba		Maxwell, R.	01
PHV-392-E	Senior Projects II	*TO BE ARRANGED*			tba		Staff	02
PHV-396-A	Independent Research	*TO BE ARRANGED*			tba		Staff	01
PHV-396-B	Independent Research	*TO BE ARRANGED*			tba		Staff	01
PHV-396-C	Independent Research	*TO BE ARRANGED*			tba		Staff	03
PHV-432-E	Electromagnetic Fields/Waves	r	1830	2115	tba		Hostler, L.	03

POLITICAL SCIENCE

PS -102-A	Intro to American Politics	tr	0930	1045	tba		Behuniak-Long	03
PS -102-E	Intro to American Politics	u	1830	2115	tba		Behuniak-Long	03
PS -105-A	Modern Political Systems	tr	1300	1415	tba		Bauzon, K.	03
PS -105-E	Modern Political Systems	t	1830	2115	tba		Bauzon, K.	03
PS -205-A	State & Local Politics	r	1430	1700	tba		Staff	03
PS -314-A	Planning in Urban Development	tr	0930	1015	tba		Tuhy, P.	03
PS -316-E	Government Budgeting	t	1830	2115	tba		Tuhy, P.	03
PS -325-A	Politics of Developing Areas	rwf	1200	1250	tba		Bauzon, K.	03
PS -398-A	T:Women and the Law	rwf	1300	1350	tba		Behuniak-Long	03
PS -398-B	T:The Constitution: 200 Years	tr	1300	1415	tba		Behuniak-Long	03

PSYCHOLOGY

PSY-102-A	General Psychology II	rwf	0900	0950	tba		Riley, R.	03
PSY-102-A1	Discussion	n	1000	1050	tba		Riley, R.	00
PSY-102-A2	Discussion	n	1100	1150	tba		Riley, R.	00
PSY-102-A3	Discussion	n	1300	1350	tba		Riley, R.	00
PSY-102-A4	Discussion	n	1400	1450	tba		Riley, R.	00
PSY-102-B	General Psychology II	tr	0900	0950	tba		Riley, R.	03
PSY-102-B1	Discussion	u	1000	1050	tba		Riley, R.	00
PSY-102-B2	Discussion	u	1100	1150	tba		Riley, R.	00
PSY-102-B3	Discussion	u	1300	1350	tba		Riley, R.	00
PSY-102-B4	Discussion	u	1400	1450	tba		Riley, R.	00
PSY-102-C	General Psychology II	rwf	1300	1350	tba		Charnetski, C.	03
PSY-102-C1	Discussion	r	0900	0950	tba		Charnetski, C.	00
PSY-102-C2	Discussion	r	1000	1050	tba		Charnetski, C.	00
PSY-102-C3	Discussion	r	1300	1350	tba		Charnetski, C.	00
PSY-102-C4	Discussion	r	1400	1450	tba		Charnetski, C.	00
PSY-102-E	General Psychology II	r	1830	2115	tba		Kanner, J.	03
PSY-203-A	Contemp Psychological Theory	rwf	1100	1150	tba		Stetten, R.	03
PSY-212-A	Experimental Psychology II	n	1000	1050	tba		Charnetski, C.	03
		u	1000	1150	tba			
		u	1400	1550	tba			
PSY-212-B	Experimental Psychology II	n	1400	1450	tba		Charnetski, C.	03
PSY-214-A	Sensory & Perceptual Processes	tr	0930	1045	tba		Bohlander, R.	03

COURSE NUMBER	COURSE TITLE	DAY	START TIMES	END TIMES	BUILDING ROOM	INSTRUCTOR	CR
PSYCHOLOGY							
PSY-221-A	Developmental Psychology	rwf	0830	0945	tba	Bohlander, R.	03
PSY-221-B	Developmental Psychology	rwf	1300	1415	tba	Bohlander, R.	03
PSY-232-A	Human Behavior	rwf	1000	1050	tba	Stetten, R.	03
PSY-232-B	Human Behavior	rwf	1300	1350	tba	Stetten, R.	03
PSY-232-C	Human Behavior	rwf	1400	1450	tba	Stetten, R.	03
PSY-245-A	Clinical Psychology	tr	1300	1415	tba	Riley, R.	03
PSY-311-A	Comparative Psychology	tr	1300	1415	tba	Bohlander, R.	03
PSY-396-A	Independent Research	*TO BE ARRANGED*			tba	Staff	01
PSY-396-B	Independent Research	*TO BE ARRANGED*			tba	Staff	02
PSY-396-C	Independent Research	*TO BE ARRANGED*			tba	Staff	03
PSY-398-A	T: Neuro Psychology	rwf	1200	1250	tba	Bohlander, R.	03
PSY-398-B	T: Internship	*TO BE ARRANGED*			tba	Charnetski, C.	03
PSY-398-C	T: Cognition	rwf	1300	1350	tba	Kanner, J.	03

PSY-398-E	T: Exceptional Individual	n	1830	2115	tba	Sinco, M.	03
-----------	---------------------------	---	------	------	-----	-----------	----

RUSSIAN

RUS-102-A	Elementary Russian II	rwf	1000	1050	tba	Karpnich, W.	03
RUS-204-A	Intermediate Russian II	rwf	1500	1615	tba	Karpnich, W.	03

SOCIOLOGY

SOC-101-A	Introduction to Sociology	tr	0930	1045	tba	Garr, M.	03
SOC-101-B	Introduction to Sociology	rwf	1100	1150	tba	Natzke, J.	03
SOC-101-E	Introduction to Sociology	t	1830	2115	tba	Garr, M.	03
SOC-252-E	Social Welfare Systems	r	1830	2115	tba	Tomkiewicz, T.	03
SOC-265-A	The Sociology of Work	rwf	1100	1150	tba	Garr, M.	03
SOC-275-A	Sociology of Minorities	rwf	0900	0950	tba	Natzke, J.	03
SOC-275-B	Sociology of Minorities	rwf	1200	1250	tba	Natzke, J.	03
SOC-380-E	Sociological Theory	t	1830	2115	tba	Natzke, J.	03
SOC-396-A	Independent Research	*TO BE ARRANGED*			tba	Staff	01
SOC-396-B	Independent Research	*TO BE ARRANGED*			tba	Staff	02
SOC-396-C	Independent Research	*TO BE ARRANGED*			tba	Staff	03
SOC-398-A	T: Drugs & Alcohol in Amer. Soc	tr	1430	1545	tba	Garr, M.	03
SOC-398-E	T: Human Sexuality	n	1830	2115	tba	Staff	03

SPANISH

SP-102-A	Elementary Spanish II	rwf	1100	1150	tba	Beatty, B.	03
SP-102-A1	Laboratory	n	1400	1429	tba	Staff	00
SP-102-A2	Laboratory	t	1300	1329	tba	Staff	00
SP-102-A3	Laboratory	u	1500	1529	tba	Staff	00
SP-102-A4	Laboratory	r	1400	1429	tba	Staff	00
SP-102-A5	Laboratory	f	0800	0829	tba	Staff	00
SP-102-E	Elementary Spanish II	n	1830	2115	tba	Belic, Lisa	03
SP-204-A	Intermediate Spanish II	rwf	1300	1350	tba	Beatty, B.	03
SP-204-A1	Laboratory	n	1430	1459	tba	Staff	00
SP-204-A2	Laboratory	t	1330	1359	tba	Staff	00
SP-204-A3	Laboratory	u	1500	1559	tba	Staff	00
SP-204-A4	Laboratory	r	1430	1459	tba	Staff	00
SP-204-A5	Laboratory	f	0830	0859	tba	Staff	00
SP-302-A	Survey of Spanish Lit. II	n	1600	1629	tba	Beatty, B.	03

COURSE NUMBER	COURSE TITLE	DAY	START TIMES	END TIMES	BUILDING ROOM	INSTRUCTOR	CR
SPEECH/COMMUNICATIONS/THEATER							
SCT-101-A	Fundamentals of Speech	rwf	0900	0950	tba	Elmes, J.	03
SCT-101-B	Fundamentals of Speech	tr	0930	1045	tba	Elmes, J.	03
SCT-101-C	Fundamentals of Speech	rwf	1100	1215	tba	Kinney, B.	03
SCT-101-D	Fundamentals of Speech	rwf	1300	1415	tba	Kinney, B.	03
SCT-102-A	Principles of Communication	rwf	0900	0950	tba	Tucker, D.	03
SCT-140-A	Approach to Theater	rwf	1000	1050	tba	O'Neill N.	03
SCT-140-B	Approach to Theater	rwf	1300	1350	tba	Harris, J.	03
SCT-140-C	Approach to Theater	tr	0930	1045	tba	Harris, J.	03
SCT-141-A	Theater Lab	*TO BE ARRANGED*			tba	O'Neill N.	01
SCT-142-K	Speech for the Stage	tr	1100	1215	tba	Staff	03
SCT-144-A	Department Practicum Debate and Forensics	*TO BE ARRANGED*			tba	Kinney, B.	01
SCT-144-B	Department Practicum Theater Production	*TO BE ARRANGED*			tba	O'Neill N.	01
SCT-144-C	Department Practicum WCLM Radio	*TO BE ARRANGED*			tba	Kinney, B.	01
SCT-144-D	Department Practicum The Beacon	*TO BE ARRANGED*			tba	Bigler, T.	01
SCT-220-A	Intro. to Telecommunications	rwf	1000	1050	tba	Tucker, B.	03
SCT-242-K	Acting II	*TO BE ARRANGED*			tba	Staff	03
SCT-252-A	Internship	*TO BE ARRANGED*			tba	Kinney, B.	03
SCT-300-A	Rhetorical Criticism	rwf	1000	1050	tba	Elmes, J.	03
SCT-303-A	Organizational Communication	tr	1300	1415	tba	Elmes, J.	03
SCT-322-A	Advanced Video Production	tr	1300	1415	tba	Tucker, D.	03
SCT-341-K	Theatre History II	rwf	1200	1250	tba	Staff	03
SCT-342-K	Lighting for the Stage	r	1400	1630	tba	Staff	03
SCT-346-A	Directing II	tr	1300	1415	tba	O'Neill N.	03
SCT-348-A	Theater Workshop	*TO BE ARRANGED*			tba	Staff	03
SCT-360-A	Journalism: Advanced Newswriting	tr	0930	1100	tba	Bigler, T.	03
SCT-397-B	Senior Seminar/Communications	rwf	1000	1050	tba	Bigler, T.	03
SCT-398-A	T: Scene Painting	n	1400	1450	tba	Harris, J.	03
		u	1400	1545	tba		
SCT-398-K	T: Jazz Dance	t	0930	1045	tba	Staff	01

WILKES COLLEGE MASTER SCHEDULE SPRING 1987

A8

Ellen's Column

different perspective

We learn from our mistakes

by Ellen Campbell

I cannot believe I was so easily duped.

Our assignment was to read William Shakespeare's Henry V and write a short critical paper on a theme of our choice. I wrote my paper on the effective leadership of King Henry V, extolling him in Shakespeare's own words, as "the great Christian King." But, as I later learned, "when Shakespeare is the most obvious, be careful!" Our classroom consensus after dissecting the play was that Henry V was calculating, cunning, amoral and ruthless—not exactly admiral leadership qualities.

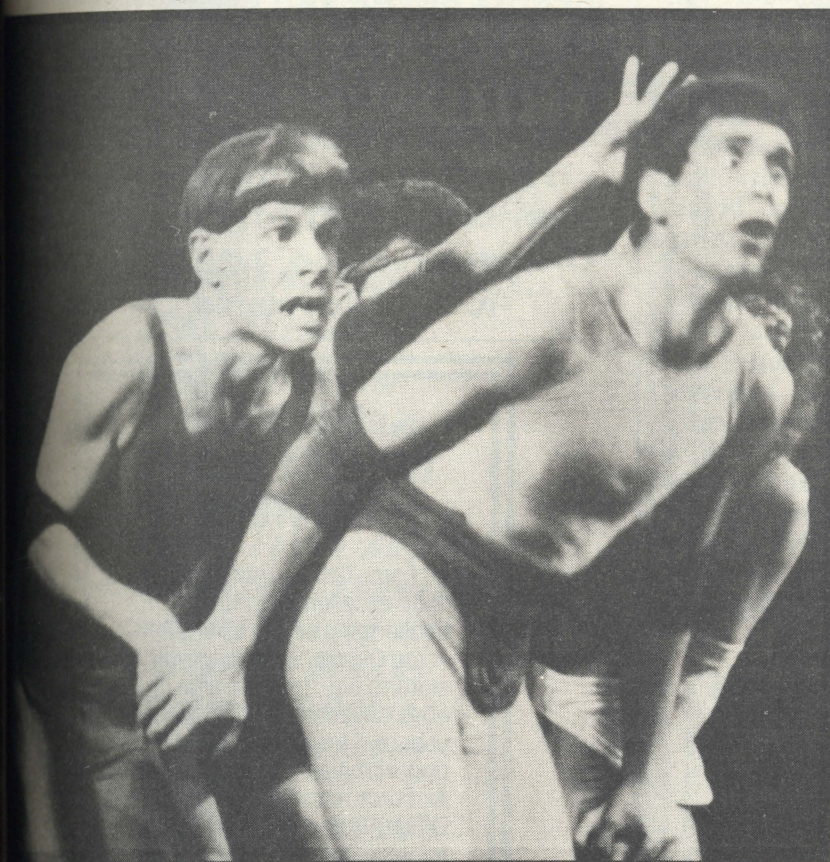
My dismay upon leaving class that night was not that I had just landed in a paper diametrically opposite from accepted critical interpretation. It was not that I had just publicly exposed my gullibility during class discussion. It was not even that I was anticipating a rather dismal grade for my paper. I was disturbed that someone such as myself who had grown up during

the cynical sixties and skeptical seventies could have been bamboozled by a politician as smooth as King Hal.

I intend to reread all of Shakespeare's historical Henry plays and remedy my inability to see beyond the obvious. But the timing of this self-discovery is amazingly apropos.

Last week as I watched the political debates between two would-be governors and two congressional hopefuls, Henry V still haunted me. I listened with a discerning ear trying to hear the real message behind all the rhetoric. I watched with a critical eye looking for inferences in a manner or a movement. I tried to dig deeply as I selected with whom I would place my vote.

I like to believe one important benefit of my almost completed college education is a heightened ability to reason, analyze, interpret, and think. Shakespeare has pushed me yet further on that quest. I shall summon these skills when I close the curtain on the voting booth next Tuesday.



World renowned mime, Tony Montanaro, former student of Marcel Marceau, and friends dazzle audience at CPA on October 22. This was just one installment in the CPA's Concert and Lecture Series.

Sagittarius-- keep cool

Aries—Now that you have patched up your problems with the love of your life, get ready for a wild and crazy weekend. As usual, you'll be the center of attention wherever you go.

Taurus—If you're having second thoughts about an important decision you made recently, you should stop worrying. Whatever you decided to do will work out right. Just be patient.

Gemini—An acquaintance's pranks will finally get to you this weekend. It's time for him to pay for all the frustration he has brought into your life. Show him that you know how to play his games.

Cancer—If you keep procrastinating like this, your entire world is going to fall on top of you. Try disciplining yourself. Go out only if you've finished at least half your homework. Do the rest Sunday night.

Leo—Try not to overindulge in life's many pleasures. Although you certainly have every right to have a fun weekend, there other things you need to finish first. For a change, stay in and relax one evening.

Virgo—During a heart-to-heart chat with a close friend you'll learn something very surprising about him. If it really shocks you, try to keep an open mind about it. Beware of insects with many legs.

Libra—Go outdoors and get some fresh air this weekend—it's the only way to get a new outlook on life. You've been spreading yourself too thin lately and deserve some time to yourself.

Scorpio—A new friend's comforting and reassuring words of wisdom will relieve your worries immensely. Now that you have a new lease on life, treat yourself to something you've wanted for a long time.

Sagittarius—Your intuition will work overtime this weekend. Someone will try to trick you, but that's impossible. Keep cool and be nice. You'll be more proud of yourself than if you were to let yourself get angry.

Capricorn—An extraordinary weekend is in store for you, especially if you party with a Pisces friend. You'll be unusually friendly and popular with the opposite sex. It may not last, so live it up!

Aquarius—Try to keep your cool concerning affairs of the heart. If you intend to do your usual partying, be sure to first finish as much of your work as possible. Then you'll really deserve a good time.

Pisces—You will be more flirtatious this weekend than you normally are. Whatever you do, be selective about the people with whom you flirt. Something substantial could come of careful use of your animal magnetism.

A special evening with Barry Drake

by Lorri Steinbacher

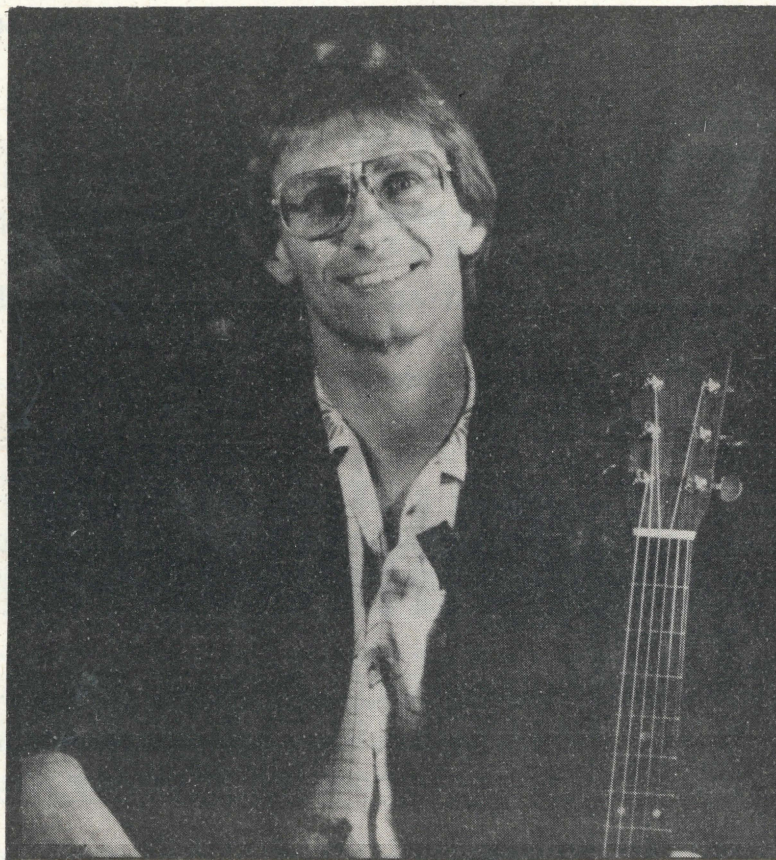
After the hectic schedule of festivities over the past Homecoming Weekend, I'm sure most of you out there are looking for a little break from the relentless action. Well, wait, before you settle into your weekend of rest and relaxation you had better gear yourself up for at least one more event.

That's right, folks, the next installment in the No RSVP Coffeehouse Series is slated for Saturday, November 1 (Parent's Day). The performer featured in the third installment is versatile entertainer Barry Drake.

Although Drake's name may not be very familiar to those of us here at Wilkes, he has appeared at over a hundred colleges throughout the United States in over thirty states. Most colleges have enjoyed his show so enormously that they have invited him back for return performances. Some colleges have had Drake back as many as ten times!

Drake plays a wide variety of music from folk to blues to rock 'n' roll. Drake helps us remember that rock 'n' roll did not just materialize, that our current favorites today were and are influenced by some of the greats of the blues and folk world. It is these roots that Drake pulls much of his material from.

In addition to selections by Bruce Springsteen, James Taylor, The Beatles, and others, Drake sprinkles some of his own material throughout the show, adding a dimension that you would not otherwise get with just cover



Bring Mom and Dad on down to the Wilkes pub to enjoy a special evening of music with performer Barry Drake, pictured above.

versions of other performers' work. To further augment the show, Drake uses stories and anecdotes from his own experiences to bring the music alive.

Barry has released three albums: *Roadsongs*, *Happylandings*, and *Solo Survivor* and has toured with Van Morrison, Livingston Taylor, Emmylou Harris, and the late Jim Croce.

The third installment in the No RSVP Series should bring the same enjoyment to the crowd that the first two did. This performance, however, differs in that it will be taking place on the first floor of the SUB at 8 p.m. (The previous coffeehouses were

in the afternoon in Stark Lobby.) Refreshments will be served and no doubt the evening will be perhaps the most enjoyable of the season.

If you need a second opinion, this is what Pittsburgh State University had to say about Barry Drake, "The most impressive thing about Barry Drake onstage is his warmth and the way he communicates to the audience through his songs and his words. The audience responded enthusiastically after every song." With a review like that how can he miss? So come on down to the Wilkes pub, bring Mom and Dad, and enjoy a special evening with Barry Drake.

UPCOMING EVENTS

October 30--Bob Baird Jazz Concert at the CPA, 8:00 p.m.

October 31--IRHC/CC Halloween Party at the College Gym, featuring "Strange" 9:30 p.m.-1:00 a.m.

November 1, Parent's Day--NO RSVP Coffeehouse Series featuring Barry Drake presented by Programming Board at Conyngham Student Center, 8:00 p.m. Co-sponsored by Student Center Board

November 3--Concert, Wilkes College Percussion Ensemble, CPA, 8:15 p.m.

November 6--Blood Donor Day at Wilkes College Gym.

November 7--Film, "Back to the Future," sponsored by Programming Board, SLC 101, 7:00 p.m.

November 8--Concert with Les Buyse on flute and Barry Hannigan on piano, at Gies Recital Hall in the CPA, 8:00 p.m. Also, POW/MIA Overnight Vigil and Parade.

Interested in gaining experience in informal education, exhibit management, and museum/zoo administration?

THE PHILADELPHIA ZOO WANTS YOU!
Interns at the zoo work 40 hours per week and receive a \$100-per-week stipend during an 18-week semester either Dec. 1, 1986-Apr. 5, 1987 or Jan. 1987-May 10, 1987. For more information write to: ZOO INTERN PROGRAM, Philadelphia Zoo, 34th St. and Girard Ave., Philadelphia, PA. 19104

AIM HIGH

PUT YOUR COLLEGE DEGREE TO WORK.

Air Force Officer Training School is an excellent start to a challenging career as an Air Force Officer. We offer great starting pay, medical care, 30 days of vacation with pay each year and management opportunities. Contact an Air Force recruiter. Find out what Officer Training School can mean for you. Call

1-800-USAF-REC



Polish Room Committee Scholarships, funded by Dr. and Mrs. Joseph Kocyan, are available for the 1986-1987 school year. Students of Polish descent with above-average academic achievement may apply by contacting the Financial Aid Office in Sturdevant Hall. Four \$500 scholarships will be awarded.

Four
inter

College sen
cent graduates
apply for live
fessional resi
counselor tra
The Devereux
suburban Phil
Devereux Fou
group of mu
residential an
ment and
centers

Devereux's
branch is acc
American Psyc
sociation for i
internships in
counseling ps
EL French
Center is app
Commission on
of Rehabilitati
and by the Joi
on Accreditation
Among the
at Devereux
year-long posi
tal health resi

PERSO
CLASS

THE CHEESE BO
Nacho and nin
ers abound. P
investigation
(Happy Birthd
Cheesepuff!!!)

COMI

Take

CL
Com

Meals

Foundation seeking counseling interns and trainees

College seniors and recent graduates are invited to apply for live-in, pre-professional resident advisor counselor traineeships at The Devereux Foundation in suburban Philadelphia. The Devereux Foundation is a group of multidisciplinary residential and day treatment and rehabilitation centers.

Devereux's Pennsylvania branch is accredited by the American Psychological Association for its predoctoral internships in clinical and counseling psychology. Its El French Rehabilitation Center is approved by the Commission on Accreditation of Rehabilitation Facilities, and by the Joint Commission on Accreditation of Hospitals. Among the opportunities at Devereux are several year-long positions as mental health resident advisor/

counselor trainees at "Career House," a transitional, coed, residential treatment/therapeutic education facility for post-high school youths with learning and adjustment problems. Career House collaborates with local colleges, career training schools, and work placement centers.

At the Center For Head Trauma, interns are provided with learning experiences with traumatically head-injured adolescents. They also work with other young adults with concurrent learning and emotional adjustment problems.

Trainees live-in and receive instruction and supervised experience in supportive counseling and milieu therapy, crisis intervention, residential treatment, cognitive remediation, social rehabilitation and recreation therapy, and report writing.

They also participate in case conferences and attend clinical seminars.

Opportunities for experience in selective job placement, educational therapy, and academic tutoring are also available at the Devereux Foundation. Applicants with prior experience in expressive media may be assigned to the Adjunctive Therapies Program which encompasses art and photography.

A stipend of \$600 per month, housing, and meals will be offered to qualified applicants who are United States citizens and at least twenty-one years old. Group hospitalization and Major Medical Insurance are also provided. Trainees must have at their disposal a fully insured personal automobile and be able to type. They should have a broad academic base of training and some degree of practical experience in outlined duties.

Preference will be given to applicants who plan a career in mental health or related fields and are seeking a comprehensive experiential learning/training experience in supportive mental health services to refine their career objectives.

For information and an application contact: Director, Institute of Clinical Training and Research, 19 South Waterloo Road, Box 400, Devon, PA., 19333-0400, or call (215) 964-3000.



SNACK BAR SPECIAL

Nov. 3 - Nov. 7

MONDAY

Beef Barley Soup
Bacon Cheese Dog
w/ Potato Puffs

TUESDAY

Chicken Noodle Soup
Chicken Ala King
w/ Biscuits

WEDNESDAY

Vegetable Soup
Meatball Hoagie

THURSDAY

Cream of Potato Soup
Macaroni and Cheese

FRIDAY

Tomato Rice Soup
Hot Turkey Sandwich
w/ Gravy

PERSONAL CLASSIFIEDS

THE CHEESE BOARD REVIEW

Nacho and nine?? Disbelievers abound. Private Cheese investigation is underway. (Happy Birthday plus one, Cheesepuff!!!)

To Ken the Impaler:

This is "Baseball like it be." Is that "Streets of Fire?" Watch it! That could be interpreted as...sexual harassment.

To D, C, and K³.

I had a good time, but I missed you!

Love, L.

COMMUTER STUDENT SPECIAL

Take advantage of reduced price,

"ALL YOU CAN EAT"

meal tickets for
Pickering Dining Hall.

Homemade Soup
Choice of Three Entrees
Complimentary Vegetables
Complete Salad Bar
Assorted Breads
Selection of Desserts
Many Beverages

5 Luncheons \$13.00

5 Dinners \$17.00

Meals may be taken anytime during the school year.

GOLD SALE

\$40.
off any 18K ring.

\$30.
off any 14K ring.

\$15.
off any 10K ring.

For one week only, order and save on the gold ring of your choice. For complete details, see your Jostens representative.

JOSTENS
AMERICA'S COLLEGE RING

Date **OCT. 30, 31 & NOV. 1**

Time **11:00 TO 4:00**

Deposit Required **\$15.00**

Place **CAFETERIA**

PARENTS WEEKEND

Payment plans available.

MasterCard VISA

© 1986 Jostens, Inc.

MUSIC BY MAIL

SPECIAL INTRODUCTORY OFFER TO ALL

\$399
EACH

USE THIS PAGE OR A PHOTOCOPY AS YOUR ORDER FORM. MARK AN "X" IN BOX NEXT TO YOUR SELECTIONS.

PATTI LABELLE MCA 5737 (8.98)		WINNER IN YOU	BOB JAMES/DAVID SANBORN WARNER BROS. 25393 (8.98)		DOUBLE VISION
JANET JACKSON Δ A&M SP-5106 (8.98)		CONTROL	THE HOOTERS Δ COLUMBIA BFC 39912		NERVOUS NIGHT
BOB SEGER & THE SILVER BULLET BAND Δ CAPITOL PT 12398 (8.98)		LIKE A ROCK	MIDNIGHT STAR SOLAR 60454/ELEKTRA (8.98)		HEADLINES
VAN HALEN Δ^2 WARNER BROS. 25394 (8.98)		5150	CULTURE CLUB VIRGIN/EPIC OE 40345/EPIC		FROM LUXURY TO HEARTACHE
BILLY OCEAN JIVE JLB-8409/ARISTA (8.98)		LOVE ZONE	GIUFFRIA CAMEL/MCA 5742 (8.98)		SILK AND STEEL
JOURNEY COLUMBIA OC 39936		RAISED ON RADIO	NEW EDITION Δ MCA 5679 (8.98)		ALL FOR LOVE
PET SHOP BOYS \bullet EMI-AMERICA PW 17193 (8.98)		PLEASE	THE FAT BOYS SUTRA SUS 1017 (8.98)		BIG & BEAUTIFUL
THE MOODY BLUES POLYDOR 829179-1/POLYGRAM (9.98)		THE OTHER SIDE OF LIFE	JEAN-MICHEL JARRE POLYDOR/DREYFUS 829125-1/POLYGRAM (9.98)		RENDEZ-VOUS
PETER GABRIEL GEFEN GHS 24088/WARNER BROS. (8.98)		SO	THE CURE ELEKTRA 60477/WARNER BROS. (8.98)		STANDING ON THE BEACH
SOUNDTRACK COLUMBIA SC 40323		TOP GUN	THE BLOW MONKEYS RCA NFL1-8065 (6.98)		ANIMAL MAGIC
HEART Δ^3 CAPITOL ST-12410 (9.98)		HEART	ATLANTIC STARR \bullet A&M SP-5019 (8.98)		AS THE BAND TURNS
THE OUTFIELD \bullet COLUMBIA BFC 40027		PLAY DEEP	METALLICA ELEKTRA 60439 (8.98)		MASTER OF PUPPETS
PRINCE & THE REVOLUTION Δ PAISLEY PARK 25395/WARNER BROS. (9.98)		PARADE	JOE COCKER CAPITOL ST-12394 (8.98)		COCKER
THE CURE ELEKTRA 60435 (8.98)		THE HEAD ON THE DOOR	SIMPLE MINDS \bullet A&M/VIRGIN SP-5092/A&M (8.98)		ONCE UPON A TIME
GTR ARISTA ALB-8400 (8.98)		GTR	THE CHURCH WARNER BROS. 25370 (8.98)		HEYDEY
38 SPECIAL A&M SP-5115 (8.98)		STRENGTH IN NUMBERS	JEFFREY OSBORNE A&M SP-5103 (8.98)		EMOTIONAL
LEVEL 42 POLYDOR 827 487-1/POLYGRAM (8.98)		WORLD MACHINE	ICEHOUSE CHRYSALIS FV 41527		MEASURE FOR MEASURE
SIMPLY RED ELEKTRA 60452 (8.98)		PICTURE BOOK	DWIGHT YOAKAM REPRISE 25372/WARNER BROS. (8.98)		GUITARS, CADILLACS, ETC., ETC.
SOUNDTRACK \bullet A&M SP-5113 (9.98)		PRETTY IN PINK	ANITA BAKER ELEKTRA 60444 (8.98)		RAPTURE
ROBERT PALMER \bullet ISLAND 90471/ATLANTIC (8.98)		RIPTIDE	LOUDNESS ATCO 90512/ATLANTIC (8.98)		LIGHTNING STRIKES
RUN-D.M.C. PROFILE 1217 (8.98)		RAISING HELL	STARSHIP Δ GRUNT BXL1-5488/RCA (8.98)		KNEE DEEP IN THE HOOPLA
GENESIS ATLANTIC 81641 (9.98)		INVISIBLE TOUCH	DOKKEN \bullet ELEKTRA 60458 (8.98)		UNDER LOCK AND KEY
VIOLENT FEMMES SLASH 25340/WARNER BROS. (8.98)		THE BLIND LEADING THE NAKED	U2 Δ ISLAND 90127/ATLANTIC (6.98)		UNDER A BLOOD RED SKY
THE ROLLING STONES Δ COLUMBIA OC 40250		DIRTY WORK	JEAN BEAUVOIR COLUMBIA BFC 40403		DRUMS ALONG THE MOHAWK
EL DEBARGE GORDY 6181 GL/MOTOWN (9.98)		EL DEBARGE	TEARS FOR FEARS Δ^4 MERCURY 824 300/POLYGRAM (8.98)		SONGS FROM THE BIG CHAIR
THE JETS MCA 5667 (8.98)		THE JETS	GEORGE CLINTON CAPITOL ST-12481 (8.98)		R&B SKELETONS IN THE CLOSET
JOHN COUGAR MELLENCAMP Δ^3 RIVA 824 865-1/POLYGRAM (8.98)		SCARECROW	STEVIE WONDER Δ^2 TAMLA 6134TL/MOTOWN (9.98)		IN SQUARE CIRCLE
FALCO \bullet A&M SP-5105 (8.98)		FALCO 3	RENE & ANGELA MERCURY 824 607-1M-1/POLYGRAM (8.98)		STREET CALLED DESIRE
MIAMI SOUND MACHINE \bullet EPIC BFE 40131		PRIMITIVE LOVE	PHILIP BAILEY COLUMBIA FC 40209		INSIDE OUT
NU SHOOSZ ATLANTIC 81647 (8.98)		POOLSIDE	MODELS GEFEN GHS 24100/WARNER BROS. (8.98)		OUT OF MIND OUT OF SIGHT
ZZ TOP Δ^2 WARNER BROS. 25342 (9.98)		AFTERBURNER	HONEYMOON SUITE WARNER BROS. 25293 (8.98)		THE BIG PRIZE
DIRE STRAITS Δ^5 WARNER BROS. 25264 (8.98)		BROTHERS IN ARMS	SAVATAGE ATLANTIC 81634 (8.98)		FIGHT FOR THE ROCK
PHIL COLLINS Δ^4 ATLANTIC 81240 (9.98)		NO JACKET REQUIRED	U2 Δ ISLAND 90231/ATLANTIC (8.98)		THE UNFORGETTABLE FIRE
HOWARD JONES ELEKTRA 60466 (8.98)		ACTION REPLAY	HOWIE MANDEL WARNER BROS. 25427 (8.98)		FITS LIKE A GLOVE
JUDAS PRIEST \bullet COLUMBIA OC 40158		TURBO	SIOUXSIE AND THE BANSHEES GEFEN GHS 24092/WARNER BROS. (8.98)		TINDERBOX
MIKE & THE MECHANICS \bullet ATLANTIC 81287 (8.98)		MIKE & THE MECHANICS	DIO WARNER BROS. 25443 (6.99)		INTERMISSION
BANGLES \bullet COLUMBIA BFC 40039		DIFFERENT LIGHT	L.L. COOL J \bullet COLUMBIA BFC 42039		RADIO
EMERSON, LAKE & POWELL POLYDOR 829297-1/POLYGRAM (9.98)		EMERSON, LAKE, & POWELL	JERMAINE JACKSON ARISTA ALB-8277 (8.98)		PRECIOUS MOMENTS
WHODINI JIVE JLB-8407/ARISTA (8.98)		BACK IN BLACK	STEVIE NICKS Δ MODERN 90479/ATLANTIC (9.98)		ROCK A LITTLE
THE FIXX MCA 5705 (8.98)		WALKABOUT	BRUCE SPRINGSTEEN Δ^{10} COLUMBIA QC 38653		BORN IN THE U.S.A.
MR. MISTER Δ RCA AFL1-7180 (8.98)		WELCOME TO THE REAL WORLD	JULIAN LENNON \bullet ATLANTIC 81640 (9.98)		THE SECRET VALUE OF DAYDREAMING
JOE JACKSON A&M SP-6021 (9.98)		BIG WORLD	SADE Δ PORTRAIT BFR-39581/EPIC		DIAMOND LIFE
SADE Δ^2 PORTRAIT FR 40263/EPIC		PROMISE	ORCHESTRAL MANOEUVRES IN THE DARK A&M/VIRGIN SP-5077/A&M (8.98)		CRUSH
KROKUS ARISTA ALB-8402 (8.98)		CHANGE OF ADDRESS	DEPECHE MODE SIRE 25429/WARNER BROS. (8.98)		BLACK CELEBRATION

☐ **Yes! Please send me your 1986 catalog with over 7000 titles. I have enclosed \$3.00 extra for postage.**



Pictured above is Color

Score

The Wilkes College team had a successful season going into the end of the season. They started by beating Albright 4-0. In addition to having an assist on the first goal, Gerard I. turned a hat trick in the contest.

Mike Armao was the
in the 2-0 victory
Baptist Bible. Armao 1
goal and an assist in
game Goalie Don Shav
three saves enroute to re
ing the Colonels e
shutout of the year

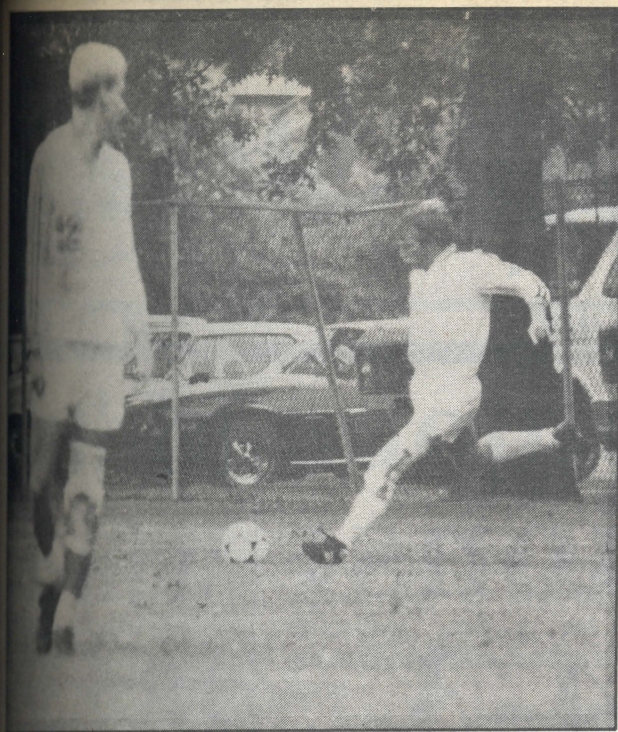
The booters faced Haven yesterday. They play Susquehanna Saturday and will end season Wednesday at Bloomsburg.

Tall bc

The key matchup
week between the first-
second-place teams
division B could have
described in one word: I
sure

The O.M. Tall boys and G-spots came out in the game all fired up. Both teams bowled well over averages. It was Ralph of the G-spots who made the difference. He bowled more than 30 pins over average to help give his team a nine pin victory.

The pressure got to the spots in the second and games. So much so that Aspray bowled 46 pins his average and the Tall



Pictured above is Colonel kicker Frank Wanzor

Field hockey loses three straight; at end 8-7-1

by Debbie DeCesare and Stacey Baldwin

The lady stickers traveled to Selingsgrove this past Tuesday to tangle with the Crusaders of Susquehanna University.

The game was their fourth and last MAC conference game. It would also decide who was to advance to the playoffs.

Wilkes played strong and, although they were unable to score, they dominated the first half. Susquehanna did score in the first half making the score 1-0.

The score remained 1-0 for the rest of the game. In the last few minutes of the game, Wilkes pulled their goalie in an attempt to be overpowering on offense. They were still unable to score, however.

Awesome defense was displayed throughout the game by Kim Cooper and Diane Schmitz.

The loss dashed any hopes the ladies had for the playoffs.

The stickers had another rough week last week as they suffered two losses to Delaware Valley and Bloomsburg. The team was on the road for both games.

At Delaware Valley, the Lady Colonels fought to a 0-0 tie at the end of regulation time. They went into double overtime and lost 1-0 when Del Valley managed to score late in the second over time.

On Saturday, the team faced Bloomsburg who is currently ranked in the top five in the nation. The Colonels looked quite impressive throughout the first half. They lost, however 1-0.

Goalie Margo Serafini had a nice save on a penalty stroke early in the game.

Although the Colonels lost the game, they felt that they stayed in the game and gave Bloomsburg some good competition.

The team would like to thank Coach Meyers and Coach Hrimshak for all their time and effort this season. The team accomplished a lot this year. At one point in the season Wilkes was ranked 14th in the nation and 5th in the region.

We would also like to thank all the fans who supported us throughout the season and to say good-bye and good luck to our seniors, Stacy Baldwin, Sharon Domzalski, Yvonne Pierman and Sally Vojtek

COLONELS
#1

Scores'n'stuff

The Wilkes College soccer team had a successful stretch going into the end of their season. They started by beating Albright 4-0. In addition to having an assist on the first goal, Gerard Piazza turned a hat trick in that contest.

Mike Armao was the hero in the 2-0 victory over Baptist Bible. Armao had a goal and an assist in the game. Goalie Don Shaw had three saves enroute to recording the Colonels eighth shutout of the year.

The booters faced Lock Haven yesterday. They will play Susquehanna on Saturday and will end their season Wednesday against Bloomsburg.

The Wilkes ladies' volleyball team suffered a series of losses this past week.

The ladies lost to College Misericordia 1-3. They fell to Moravian and Albright by the same score, 0-2. Finally, they were swept by both Susquehanna and Gettysburg 0-3.

In the Gettysburg contest Lisa Kravitz had four kills and one ace.

All of the intramural flag football games were rained out last Sunday. This sets the schedule back one week.

Good news for Wilkes wrestling fans. It has been announced that the Dec. 2 match against Lehigh will be televised on WVIA-TV 44.

Tall boys lead league

The key matchup last week between the first- and second-place teams in Division B could have been described in one word: pressure.

The O.M. Tall boys and the G-spots came out in the first game all fired up. Both teams bowled well over their averages. It was Ralph Costa of the G-spots who made the difference. He bowled more than 30 pins over his average to help give his team a nine pin victory.

The pressure got to the G-spots in the second and third games so much so that Bruce Gray bowled 46 pins below average and the Tall Boys

won by 31 pins.

Then Walt Grodeki and John Bialek of the Tall Boys helped spark a 56-pin victory and earn a 5-2 record for the day. This maintains their number one standing.

The key matchup this week will be between Hakky Pakk and the Generals.

Here are last week's results:

Grim Reapers 7	FMR 0
Weiss 4	Lucky Strikes 3
Ten Pin Taps 7	Dego's 0
W.A.S. 5	Team Banzai 2
Underdogs 5	Joe's plumbing 2
O.M. Tall Boys 5	G-Spots 2
Hakky Pakk 7	Dom Shleps 0

Four Horsemen 6
Generals 1
Happy Camping 7
Upso 0

The individual leaders for the men were as follows:

Len Witczak	221-207-226-654
Rick Santasania	234-608
Howie Knorr	552
Mike Havrilla	504
Dave Alwood	494

The individual leaders for the ladies were as follows:

Mary Consugar	200-183-543
Cyndie Pieloch	202-474
Lori Ott	444
Karen Beretsky	434
Jess Holm	400

Harriers look to championship

by Tom Urso and Jane Brown

The Wilkes cross country team journeyed to Susquehanna University on Saturday afternoon for 'stiff competition. The mens' team was outmatched by the experienced Susquehanna runners on their flat but quick course.

Mike Keohane, leading most of the race, finished in a strong second place with a time of 25:55, only one second behind the leader. Tom Urso completed the course with determination, posting a personal best time of 26:30.

Also posting personal bests were Doug Lane, Pete Huber and Murnal Abate.

Since Susquehanna did not have a ladies team, our own lady harriers had another week off.

This marks the completion of dual meet competition for the Colonels. Within the next two weeks, the team will be gearing up for the MAC league championships. The top runner for Wilkes, Mike

Keohane, posted some impressive times throughout the dual meet season.

As a result, Mike should finish among the top runners in the MAC field of runners. Junior Tom Urso also turned in several strong performances throughout the season. This places him in the upper 25% of MAC competitors. Mike and Tom will enter the race looking to improve last year's performance while the rest of the team will have their first taste of tough competition.

Despite a recent injury, sophomore Kathy DeChirico will lead the women's team in the MAC competition. Kathy is looking to run with the top female competitors. The Lady Colonels will be entering the MAC race for the first time.

The MAC league championships will be held on Saturday, November 8th at Gettysburg. The time will be posted at a later date. Get out and support the Wilkes cross country team for their final run of the season.

"It's not a question