

The Beacon

Volume 45, No. 1
September 2, 1993

E.S. FARLEY LIBRARY
WILKES UNIVERSITY
WILKES-BARRE, PA

Wilkes-Barre, Pennsylvania
Wilkes University's Weekly Student Publication

Renovations abound as Wilkes students return

Twenty-five million dollar facelift planned for Wilkes

BY GINA M. TAGNANI
Beacon News Writer

Wilkes University, early last month, kicked off a \$25 million campus completion plan.

The plan includes a new office complex which will house classrooms as well as offices for the School of Business, Society, and Public Policy and the School of Liberal Arts and Human Sciences. Also in the works is the planning of a new student union building including a dining room to replace the present one.

According to Dr. J. Michael Lennon, vice-president for Academic Affairs, the plan takes shape in three specific phases.

The first phase is the student union building and the new classroom building which will be about half the size of the Stark Learning Center. Phase two will be the

building of at least one, but hopefully two, new residence halls, which will be located on South Franklin Street and South River Street. And finally, the third phase will be the new dining facilities and residence hall near the spot where Pickering Hall currently is located.

"The third stage will be, perhaps, the most inconvenient," said Lennon, "We'll be short on parking until that phase is complete and we'll have to convince students to park at Ralston Field."

Ralston Field is equipped with 300 parking spaces and would be furnished with a shuttle bus to get students from there to the university.

The \$25 million plan also includes the framework for renovations to Stark Learning Center for the coming of the Doctor of Pharmacy Degree to the university.

The plan has been in the works now for some time,



Renovations to the recently purchased buildings located on Franklin Street across from the Marts Center.

but now that it has been approved by the Board of Trustees, who also added \$2 million to the request, the project can officially begin.

The money to fund the project will come from vari-

ous sources, according to Lennon. One is a bond issue and the University will also refinance its existing debt of \$6 million.

"We're hoping also to collect on our promised dona-

tions," added Lennon, "and the new School of Pharmacy will, I'm sure, more than pay for itself."

According to University President Christopher Breiseth, as announced at a (see **Renovations**, page 3)

Wilkes announces pharmacy program

BY MICHAEL BUTCHKO
Beacon News Editor

Wilkes saw a need and has addressed it.

The decade of the 1990s, which began with the transition from Wilkes College to Wilkes University, brings expansion once again to Wilkes. A pre-pharmacy and professional pharmacy program was announced this past summer, with applicants being accepted for the fall of 1994.

Wilkes joins 42 other schools in the United States and only 11 schools in the Mid-Atlantic

region to offer the Doctor of Pharmacy degree. It will be the only school located in the Mid-Atlantic region not located in a major metropolitan area offering the degree.

On July 24, 1993, Wilkes University outlined the guidelines for its program in pharmacy. For acceptance into the pre-pharmacy program, applicants must be high school

graduates, rank in the upper-half of their graduating class, have an SAT score of at least 975, and procure two high school faculty recommendations. The maximum number of students in the pre-pharmacy program will be 80.

"The response to the new Doctor of Pharmacy degree has been tremen-

"The response to the new Doctor of Pharmacy degree has been tremendous..."

-Dr. Christopher Breiseth

(see **Pharmacy**, page 3)

WHAT'S GOING ON...

Attention Students! get involved in Student Government and the Wilkes Community with only a minimal time involvement. You can become a member of one of seven **standing committees**: Academic Standards Committee, Admissions and Financial Aid Committee, Student Life and Athletics Committee, Curriculum Committee, Library Committee, Teacher Recognition and Effectiveness Committee, and Student Media and Publication Media. If one interests you, just send a statement of why you would like to be considered for the position to the SG office, 3rd floor Conyngham, or drop it off at Sterling Hall, Room 1. Any questions, call Chad Lojewski, WUSG President at 822-7431 and leave a message. Selections will be soon, so don't delay.

On Thursday, September 2, The League of Woman Voters and International Association of Business Communicators (IABC) will co-sponsor a **voter registration** on the Chase Lawn on the Wilkes University campus from 11 a.m. to 1 p.m. Any resident of Luzerne County who is over 18 and not registered to vote is welcome to come. The deadline for registering for the Municipal Election is October 4.

Volunteers are needed to share nature with school children who visit the **Bear Creek Nature Center** on field trips throughout 1993 and again in this autumn. Volunteers will guide small groups of children on nature trails and lead hands-on exploration activities. Any adult who loves working with children and is concerned about the environment is welcome to become a tour guide by completing a training program to be held at the Nature Center. Volunteers may choose either the Thursday training series to be

held September 9, 16, and 23 or the Friday training series to be held September 10, 17, and 24, 1993. The training programs will be held from 9 a.m. to noon. Anyone interested should call (717) 472-3741 before September 8 to register. There is no fee for the program. The training sessions include short hikes on nature trails; sturdy footwear is recommended.

Attention Poets: The National Library of Poetry at Ownings Mill, MD, has announced that \$12,000 in prizes will be awarded this year to over 250 poets in the North American Open Poetry Contest. The deadline for the contest is September 30, 1993. The contest is open to everyone, but seniors are particularly welcome, and entry is free. Any poet, whether previously published or not, can be a winner. Every poem entered also has a chance to be published in a hardbound anthology. To enter, send one original poem, any subject and any style, to The National Library of Poetry, 11419 Cornridge Dr., P.O. Box 704-ZI, Ownings Mills, MD 21117. The poem should be no more than 20 lines, and the poet's name and address should appear on the top of the page. Entries must be postmarked by September 30, 1993. A new contest opens on October 1.

The **Student Conservation Association (SCA)** is offering approximately 1,000 expense-paid positions nationwide throughout 1993 and again in 1994 in conservation, resource management, and environmental education. Currently, SCA is accepting applications for positions offered for the winter/spring season in national parks, forest, wildlife refuges, and other conservation areas. The 12-week Resource Assistant Program for men and women 18 and older, includes on the job training, housing, living and travel ex-

penses, and the potential to receive academic credit. SCA offers resource assistant programs throughout the year, and applications received by September 15, increase the chance of acceptance for a position in the program. Anyone interested in participating in or learning more about the SCA programs should contact: SCA, P.O. Box 550 Charlestown, NH 03603 or call (603) 543-1700.

Are you bored of just watching T.V? Then why not see a play at the Kirby Center. Neil Simon's **Lost In Yonkers** will be opening on October 14 at 8:00 p.m. The play is a heartwarming, heart-breaking journey back into 1942, where two young boys live, love, and grow under the dominance of their iron-fisted grandmother. The play has won four Tony Awards, including Best Play. Tickets can be purchased at the Kirby Center Box Office or by calling (717) 826-1100, and are priced at \$107, \$98, or \$78.

The Sordani Art Gallery will be exhibiting sculptures and drawings by Herbert Simon from August 30 through October 3. Some of the works will be inspired by "places" around the Wyoming Valley, while others take everyday household items, or "things" and alter them as sculptural form.

The Coro Laboratorium Choir will be performing at the first Presbyterian Church on September 13 at 8:00 p.m.

A lecture by Raltisa Vassileva will be held at the Dorothy Dickson Darte Center at 8:00 p.m. Vassileva is an anchor for CNN International, and a native of Sofia, Bulgaria. She will discuss "The Mass Media's Challenge in Eastern Europe."

Come Out and Watch Alladin This Firday in the CPA at 8 p.m.

S.G. NEWS

* Heard the first reading of a fund request from the MBA Student Association and the Accounting and Business Club
* Voted to allocate \$1000 to help sponsor events during National Collegiate Alcohol Awareness Week

* Replacement elections

-Informational meeting, September 2, SLC 101 at 4 p.m.

-Nominations, with 50 signatures, due September 7, in the cafeteria between 5:30 and 6 p.m.

-Elections, September 15, SLC lobby from 10 a.m.-3 p.m., cafeteria from 4:30-6 p.m.

* Homecoming tickets go on sale September 7. Cost is \$15 for one ticket and \$25 per couple. Tickets will be on sale from 11 a.m.-1 p.m. in SLC lobby and during dinner hours in the cafeteria.

* King's/Wilkes Mixer, September 17, Kirby Center in Public Square from 9 p.m.-1 a.m.

Next general meeting is Wednesday, September 8, at 6:30 p.m. in Marts 213. All are welcome.

AD GOOD FOR \$1.00 OFF A

\$10.00 PURCHASE

MUSICAL ENERGY

WE BUY, SELL & TRADE USED CD'S, CASSETTES & RECORDS
SPECIALIZE IN IMPORTS & HARD-TO-FIND MUSIC
ENVIRONMENTAL & POLITICAL GIFT ITEMS
KALEIDOSCOPIES
JEWELRY

JAY NOTARTOMASO
(717) 829-2929

55 NORTH MAIN STREET
WILKES-BARRE, PA 18701

THE BEACON

Wilkes University's Weekly Student Newspaper
VOL. 46 NO. 1 September 2, 1993

1993-94 Editorial Staff

Patty Puerling
Editor In Chief

Michael Butchko

Lynnmarie Rosencrance

David McCabe

Lynn Krutz

Brad Hays

Jennifer Barkas

Terri Granahan

Julie DePue

Al Smith

Quanda Walls

Dana Alexander Nolf

News Editor

Features Editor

Sports Editor

Co-Copy Editor

Co-Copy Editor

Photo Editor

Ad Manager

Business Manager

Technical Manager

Distribution Manager

Advisor

EDITORIAL POLICY

Editorials reflect the views of the writer, but not necessarily of *The Beacon* staff. Letters to the Editor are welcomed but are limited to 500 words or less. All letters must be signed. Letters can remain anonymous only if signed and requested by the writer.

LOCATION—2ND FLOOR HOLLENBACK HALL

MAILING ADDRESS—WILKES UNIVERSITY, P.O. BOX 111; WILKES-BARRE, PA 18766

PHONE (717) 824-4651 EXTENSION 2962, FAX EXTENSION 2963

Fresh

By MICHAEL BU
Beacon News Editor

As the old a
can't tell the play
program. It is in this
Beacon presents a
the 1993-94 staff.

Leading
Puerling, the ed
Puerling is a jun
major with a min
mental science. Sh
dent of Circle K a
WCLH from eigh
Tuesday nights. F
from Little Silver,
ers the difficult jo
chief "a great ex
great deal of fun."

Batting se
truly, Michael Bu
editor in my first y
con.. I'm a soph
science and psych
my spare time, I
Speech and Deba
long resident of S
I hope to build a
solid news staff to

Renc

(continued
for itself."

Accordin
President
Breiseth, as
news confe
will create a
future of W

"When
campus wil
the lives of
communit
equipped
mands of t

The ca
create a di
acre camp
half will c
classroom
buildings,
ern half w

Fresh Staff Has High Hopes

By MICHAEL BUTCHKO
Beacon News Editor

As the old adage goes, you can't tell the players without a program. It is in this spirit that *The Beacon* presents an overview of the 1993-94 staff.

Leading off is Patty Puerling, the editor-in-chief. Puerling is a junior journalism major with a minor in environmental science. She is vice-president of Circle K and is a DJ for WCLH from eight until 11 p.m. Tuesday nights. Puerling comes from Little Silver, NJ and considers the difficult job of editor-in-chief "a great experience and a great deal of fun."

Batting second, is yours truly, Michael Butchko, as news editor in my first year at *The Beacon*. I'm a sophomore political science and psychology major. In my spare time, I'm also on the Speech and Debate Team. A life-long resident of Swoyersville, PA, I hope to build a dependable and solid news staff to cover the major

issues here at Wilkes. I also am the author of "Idle Chatter," the well-intending but seldom humorous column. After graduation, I hope to go on to graduate school to get my master's degree in Political Science.

The Beacon's features editor, Lynnmarie Rosencrance, is a junior political science and communications major. On campus, she is a member of the Speech and Debate Team. She is also currently employed at Pioneer Abstract Company in Kingston as a title searcher. When not occupied by the above, Lynnmarie performs with the Little Theater of Wilkes-Barre. She lives off-campus in Wilkes-Barre, and hopes to see the features staff "devote more attention to the potentially threatened historical side of Wilkes."

Lynn Krutz, our co-copy editor, is a senior double majoring in communications and business administration. Her long list of activities includes the Speech and Debate Team, IABC, Student Government, and the Pre-Law Association. Krutz also serves as the student representative to the

Academic Standards Committee and is president of Lambda Pi Eta, the communications honor society. She would like to attend Georgetown University Law School and eventually practice as an international corporate attorney. According to Krutz, "working on *The Beacon* provides practical experience for all disciplines. Learning how to write well is a central component of any successful career."

Finally Al Smith, the brains behind *The Beacon*, is a computer science major from Lake Winola, PA. Al has been a member of *The Beacon* for two years as technical manager. He has been vice-president of the Wilkes University Mathematics and Computer Science Club, a student Apple Computer representative, and currently teaches country line dancing in his spare time. "Since this is my last semester, I'm looking forward to the best *Beacon* that we've had in years."

Next issue, look for interviews with the remaining members of *The Beacon* staff.

Pharmacy

(continued from page 1)

dous," Dr. Christopher Breiseth, president of Wilkes University, said recently. "We have received more than 500 phone calls from people interested in this new degree since the announcement on June 24."

For students enrolled in the pre-pharmacy program, Wilkes will provide an incentive to attain the Doctor of Pharmacy degree here as well. Early admission to the pharmacy program will be granted to students with a solid high school record who maintain a high GPA at Wilkes.

Pre-admitted students will be guaranteed admission to the pharmacy program if they rank in the top 10 percent of their high school class, have an SAT score of at least 1100, supply two faculty recommendations, and have a successful interview. These students must then complete the Wilkes pre-pharmacy cur-

riculum with a 3.0 GPA.

The pre-pharmacy curriculum requires two years of college-level education totalling 59 credits, 12 of which will be electives. In the science area, 24 credits are required, including eight each in Biology, Chemistry, and Organic Chemistry. For students transferring into the Doctor of Pharmacy program, any of the requirements may be satisfied through advanced placement test or the passing of special exams. The four-year professional curriculum, which consists of 130 credits, is composed of two years of Pharmaceutical Sciences, followed by two years of Pharmacy practice.

"Wilkes has a strong tradition of quality education and responding to the educational needs of students in the region," added Breiseth. "The addition of the Doctor of Pharmacy degree is consistent with our history and begins a new chapter."

Renovations

(continued from page 1)
for itself."

According to University President Christopher Breiseth, as announced at a news conference, the plan will create a real focus for the future of Wilkes.

"When completed, our campus will further enhance the lives of our students, our community, and be fully equipped to meet the demands of the 21st century."

The campus project will create a division of the 27-acre campus. The northern half will consist of all of the classroom and laboratory buildings, while the southern half will be the place for

most of the residence halls.

Along with this plan the university has recently purchased two buildings across from the Marts Center on South Franklin Street. One building will be knocked down and the other will be the new home for the registrar, student services and financial aid. This, along with the Marts Center, will create the southern anchor of the campus, with South Street being the hinge.

Also according to Lennon, the Communication Department is going to get a necessary facelift. There's an area in Stark Learning Center that will house a new tele-

vision studio and attempt to be competitive with Luzerne County Community College's facilities.

A "greenway" will be constructed to run right through the center of campus from Stark Learning Center to the building on Northampton Street. The greenway will act as the main thoroughfare and will be lighted.

"All in all we're very excited about the changes," said Lennon. "And although it will create a slight inconvenience for the student in the short-run, in the long-run it will benefit each and every student in the best way."

Help Circle K dance all night for children

Special to *The Beacon*

Wilkes University's Circle K and local radio station Q-102 are co-sponsoring a 24-hour dance marathon on September 24 and 25, beginning at 7 p.m. in Rumours, located in the basement of the Marts Center. All proceeds will benefit the Pennsylvania Kiwanis Geisinger Children's Heart Program in Danville.

Featured at the marathon will be local bands Chaotic State of Mind and Heart-

breaker, as well as karaoke by Tom Jones and a dance exhibition by the Gail Ercoli Dance Company.

Hourly prizes will be awarded at the dance, including gift certificates for local restaurants and fitness centers, movie passes, and video rentals. Prizes will also be awarded to the two participants who collect the most money from their sponsors.

If you are interested in participating or would like more information, please contact Circle K Secretary Tim Williams at 655-8122.

F O R U M

EDITORIAL

It is time to change once again from those carefree summer months to the stressful college days ahead. For the broken-in seniors the change is easy to make because the upperclassmen all know that this will be their last year. The seniors have already set their minds on graduation and they have begun to enjoy themselves for the duration. However, for a beginning freshmen, this change can turn into a nightmare.

The scariest thing that happens is the meeting of one's roommate. This experience can be both pleasant and horrible depending on the situation. Usually the degree of compatibility between roommates drops as the stress level increases. (Aren't you glad you know that now?) There are those matches that result in friends for life; however, these are rare.

Another big step that can drive a freshman crazy is the switch from mom's kitchen food to the cafeteria selections. This is probably the worst adjustment for any newcomer. One of the things people tell you before you go away to school is to watch out for the "freshman 15." The only way a freshman gains these dreaded 15 pounds is by NOT eating at the cafeteria and ordering out. In fact, by eating only at the cafeteria you can lose 15 pounds.

In addition to the adjustment to the food there is also a switch to a different time schedule for meals. This not only pertains to the cafeteria but the SUB as well. (The new hours of the SUB seem to have the students in an uproar, but I am getting ahead of myself.)

I think the Brady Bunch sang it best: "When it's time to change, you've got to rearrange . . ." because this is exactly what every newcomer must do. Although this rearrangement may feel like the difference between heaven and earth, it is the best thing that could ever happen to a freshmen.

The change that takes place between the first months and the last months of classes is remarkable for many. (However, there are those of us who will never change.) A freshmen's independence slowly strikes, their parental units lose power and their "High Schoolishness" finally fades.

What does it leave? It leaves a group of people who are eager to learn and get on with their college career (hopefully). The change also opens students' minds to all of the opportunities this campus has to offer.

Then before you know it, the freshmen of this year are the seniors of 1997 looking back and saying, "I was never that bad, was I?" So, for all of the freshmen, hang in there! It gets much better. And, for all of the seniors, go easy on the freshmen and take your time because it will all be over before you know it."

* * *

I wish you all the best of luck in all of your endeavors this semester. I would also like to welcome all of the newcomers to Wilkes. And for the rest of you I welcome you back to another year!

IDLE CHATTER

By MICHAEL BUTCHKO

News Editor

On behalf of the news staff at *The Beacon*, welcome, or welcome back, to Wilkes. For those in the audience new to this institution, I hope you find Wilkes enjoyable and intellectually stimulating.

By the time this issue reaches your hands, you will have already experienced the phenomenon known as Club Day (covered at length in next week's *Beacon*). The purpose of this littering Chase Lawn is to encourage students to get involved in the many activities here at Wilkes. While I would not recommend trying to join every one, I would also suggest joining something.

With respect to Clubs, Wilkes is student-friendly. To use a cliché (and a worn one at that), has something for everyone. Your college experience will be much more enjoyable and you will become a part of something. Even if Club Day didn't give you the urge to join an organization, it's still not too late. At Wilkes, it's never too late to become a part of something.

Speaking of clubs, there is one organization which I would like to mention. If you enjoy speaking, if you love to hear the sound of your own voice, or if you're particularly adept at long phone conversations, you may be a candidate to join the Wilkes University Speech and Debate Union. We will teach you everything you need to know. If interested, see Dr. Bradford Kinney in Capin Hall.

Finally, the moment for which we've all been waiting. What is the purpose of Idle Chatter? The grand scheme of things? If you answered, "It has none," you are closer to correct than you think. In format and style, it will somewhat imitate the Sunday column of Mike Lupica in the *New York Daily News*. If I were half as articulate (or half as funny), than it would also imitate Mr. Lupica's content. The beginning will consist of a commentary on one topic. The middle to end of the column will cover many topics in a few sentences each. It will attempt (I said attempt) at times to be humorous without offending; other times it will stay serious. Expect more of the former than the latter. Most importantly, I hope it will entertain and give the reader something to think about for the upcoming week. O.K., maybe not the whole week.

Monday, August 30 saw CBS venture into something new and different for that network: humorous late night television. The original Late Night War was supposed to be strictly Leno vs. Letterman, but the media seems to think that Ted Koppel is in this fray. That Ted delivers a hell of a monologue, huh?

Speaking of side-splitting (I don't think so), Al Gore appears on Letterman September 8. Yeah, my VCR's already set for that one.

NBC has its grubby little hands in Letterman's well-publicized defection. No "Top Ten List" for no Larry "Bud" Melman — unless Al Gore wants to take Larry's place. Can he handle two jobs at once?

A doctor who performs abortions is wounded outside of a clinic, and a Catholic priest in Florida goes on record as saying that he has no problem with the shooting. And we wonder why the Catholic Church has so many problems.

The Pope comes to Denver, and NBC News devotes two stories to priests molesting kids. The news is good on all fronts.

Many people were surprised that the Pope outdrew the Colorado Rockies, to which one sportswriter responded, "Yeah, well, he's not an expansion Pope."

Better than anything I could come up with. (Insert your own sarcastic remark here). This North American Free Trade Agreement (NAFTA) is shaping up to be as tough a battle for the President as his budget passing. Except this time, the alliances are not as clearly identified as party lines.

Have you seen some of these tag-teams in this dispute? Ralph Nader and Pat Buchanan? Bill Clinton and Ross Perot? Call Jesse Jackson, this is THE Rainbow Coalition. In this case, however, the only color in this rainbow is green, the color of money.

In its continuing campaign to further male-female relations and end the battle of the sexes, *The Beacon* presents "He Said, She Said." I won't tell you with who (or whom) I agree, I'll just say this: notice the masculine pronoun is first. Nonetheless, that Seymour guy makes me nervous.

That's all for now. We'll chat again next week.

AMANDA HUC

With the beginning, the start of your longings into plasmes necessary. A few much men and demand gender quality, this is simply one of many areas where the sexes seem to oppose spect

My counterpart make a man carry the typically male) content. That the ten seemingly gender-remales, according Seymour), generally So while the generally a female w

may have forgotten (under the beer bottles. If I'm complaining, begins packing, for the planning and prepariast making it less ment). A male, on practice, that activity necessities (an issue enough clean underv

Sentimentality his emotional variab happened the night absolutely necessary comparisons of who females remember collecting little merHallmark memories and home; for male or Heidi. (Don't yo

So guys next sets of Samsonite as think of it as a lesso And that's what sh

W
24

Hourly Prizes

Al
He

Live Band

Wilkes University

"The Packing Problem"

By AMANDA HUGINKIS

With the beginning of another semester, or perhaps, even more frightening, the start of your first college semester, the chore of packing all your worldly belongings into plastic crates

comes necessary. And no matter how much men and women demand gender equality, this is simply one of many areas where the sexes seem to be at opposite ends of the spectrum.

SHE SAID

My counterpart seems to believe that women "overpack" in order to make a man carry their luggage. That is an absolutely ludicrous (translation: typically male) contention. I, on the other hand, believe the issue runs slightly deeper. That the tendency of a female to bring more "stuff" is the result of two seemingly gender-related traits — those of preparation and sentimentality. Females, according to my statistics (and those are the only ones that matter Seymour), generally rank higher in both of these categories.

So while the Boy Scout's motto may be "Always be prepared," it is generally a female who always has the Kleenex you need, the map you males may have forgotten (or claim not to need), and the remote control that was hidden under the beer bottles and empty chip bags from the Monday night football game. (If I'm complaining, I may as well get the female favorite in.) So when a female begins packing, for three to four months nonetheless, she looks at the big picture, planning and preparing for the inevitable disaster in hopes of avoiding it or at least making it less painful (sort of the same way a guy prepares for commitment). A male, on the other hand, likes to think (guys, contrary to popular practice, that activity is meant to be brain-related) he can survive on the bare necessities (an issue I'll address later) and simply makes sure that he has thrown enough clean underwear in his duffel bag to last him until the next visit home.

Sentimentality is similarly treated by both genders. Males tend to turn this emotional variable off or way down, avoiding any attempt to remember what happened the night before, let alone anniversary dates and birthdays, unless absolutely necessary. While my dear Seymour and his buddies are grunting comparisons of who scored the most runs, or at least got on base, the night before, females remember their first kiss, their last kiss, and all those in between by collecting little mementos. What results, for females, is a dorm room full of Hallmark memories, all of which must be carried back and forth between college and home; for males, a picture wall of bare necessities whose names are Bambi or Heidi. (Don't you wish.)

So guys next time you look at the girl next to you loaded down with seven sets of Samsonite as Seymour said (even better alliteration), pick up the bags, and think of it as a lesson in improving your skills of preparation and sentimentality. And that's what she said for this week.

By SEYMOUR BUTZ

With the return of school on August 25, summer as Wilkes students know it came to an abrupt end. Most of us, I am certain, were surprised by the proximity of this fast approaching deadline. For the men in our audience (translation: the only ones who can understand "proximity"), the task was a simple one. When packing clothing, just a few basics, whatever will be necessary for the first week of school, are necessary. For wardrobe additions, the Labor Day break is placed perfectly as the weather changes. If it gets too cold, go home over break and add a few things to the old wardrobe. Sounds easy, right?

But for the women in our audience it's not this easy. Now before you go saying, "Seymour, just who the hell do you think you are?," let me explain. It is my opinion that women should be allowed membership in the Boy Scouts. They take the phrase "Be prepared" to gross extremes. "But Seymour," I can hear the fair Amanda saying, "what if it were to snow the last week of August? I'd need at least ten winter outfits to get through the week! It's better to be safe than sorry."

As a rule for the use of seatbelts, the above aphorisms. To extend the cliché packing however, is blasphemy. Not only is it totally impractical for

women to pack so many clothes, but, as with all instances, when women overdue things, a man must be there to save them. If Amanda brings seven sets of Samsonite (great alliteration) luggage to Wilkes, will she carry the bags to her room? Yeah, when King's freezes over. No, the fair Amanda will bat her eyes and use her charm, and some poor fellow will be in the Wilkes-Barre General Hospital with a hernia. And I highly doubt that Amanda would even take the time to send him flowers, or even better, a six-pack.

While women laugh at our stupidity as we once again carry their crap up 23,000 flights of stairs, we, gentlemen must stop this practice. Only once women are forced to carry their own bags will they realize that it's much easier to injure your spine than you think. Until then, gentlemen, in closing what he said, take care and enjoy your traction.

HE SAID

Wilkes University's 1st Annual 24 HOUR DANCE MARATHON

Hourly Prizes

Sept. 24th -Sept. 25th

Free Food

All Proceeds to Benefit Kiwanis Children's
Heart Program at Geisinger Medical Center

Live Bands

Sponsored By Wilkes Circle K
Co-Sponsored By Q102

Live Q102
Broadcast

Wilkes University's Rumours Nightclub 274 S. Franklin St. (Basement of the Marts Center) at 7p.m.

Are You Getting the Health Care You Need?

We offer:

Birth Control including:
Birth Control Pills
Depo-Provera injections
Norplant insertion
Diaphragm fittings

Morning After Treatment-
—for unprotected intercourse
Pregnancy Testing and Counseling
HIV Testing and Counseling
Abortion Services- awake or asleep

Save this ad.

You or someone important to you may need our services.

ALLENTOWN WOMEN'S CENTER

Call for information or appointment:
(215) 264-5657 or 1-800-372-8500

SW Corner of Rt. 22 and Airport Rd.
Allentown, Pennsylvania





Shakespeare on the Greens

By LYNNMARIE
ROSENCRANCE
Beacon Features Editor

While most of the student body was spending the summer at home with family, some of our fellow students were doing what they do best. The Wilkes theatre department's summer production "Much Ado About Nothing" ran July 27-31.

Through the skill and knowledge of set designer Professor John Swanson the Pickering Lawn was transformed from a part-time volleyball court into an open-air amphitheater.

From the moment you neared the Pickering Lawn, you were instantly transported from parking meters and pavement to the music of string instruments and flutes. The atmosphere before, after and throughout the production was consistent and very period-related to the play.

The action of "Much Ado" showed the actors' abilities to grasp their characters, interpret their thoughts and feelings and develop good

throughline in character. The chemistry between Benedick (Jack Evans) and Beatrice (Billi Jo Martin) was solid and made their animosity for each other all the more humorous. Other roles performed well were those of Dogberry the constable played by Joseph Gilbert and Leonato played by Mark Zdanczewicz.

The costumes were colorful and true to the time period and nicely blended by the director Brad Wright. All technical work by Erika Neubert was complimentary to the action and therefore well-directed.

Top 10 Least Visited Places This Summer

By BRAD HAYS
Beacon Co-Copy Editor

10. Wilkes-Barre
9. ABM's Quick Response Center.
8. Rush Limbaugh's Nude Photo Gallery.
7. Hollywood Madam Heidi Flises's house. Oops, I'm sorry, that's one of the most visited places over the summer.

6. Buttafuco's Ride Me While You Wait Auto Service.
5. Michael Jackson Extortionist Exhibit (try it out yourself, people).
4. Clinton "Inhaling" Laboratory.
3. Ben and Jerry's See How Chunky Monkey is Really Made Factory.
2. Jeffrey Daumer's All You Can Eat Deli.
1. Any Seattle Sizzler's Salad Bar.

Top 10 Campus Paperback Bestsellers

1. *The Firm*, by John Grisham.
2. *Jurassic Park*, by Michael Crichton.
3. *The Pelican Brief*, by John Grisham.
4. *Rising Sun*, by Michael Crichton.
5. *A Time to Kill*, by John Grisham.
6. *Life's Little Instruction Book*, by H. Jackson Brown Jr.
7. *The Making of Jurassic Park*, by Don Shay and Jody Duncan.
8. *Waiting to Exhale*, by Terry McMillan.
9. *Congo*, by Michael Crichton.
10. *All the Pretty Horses*, by Cormac Mc Carthy.

Collegians Attend International Circle K Convention

Special to The Beacon

Members of the Circle K Club of Wilkes University were in Nashville, Tennessee, August 14-18, to represent the Wilkes organization at the 38th Annual Convention of Circle K International.

Wilkes' Circle K Secretary Tim Williams and Club Treasurer Kevin Moher joined approximately 1,000 other Circle K members at the event.

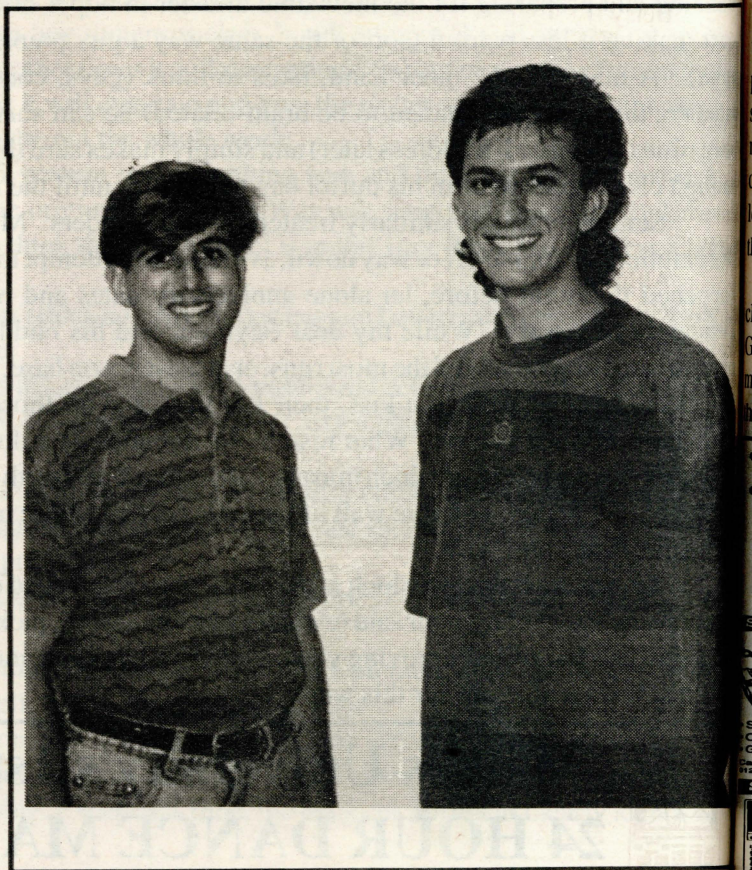
The local representatives were selected because of their service to the Wilkes campus and community. At the conference, Williams was a judge of club scrapbooks and Moher served on the Elections Committee.

Both students were elected international officers and voted on issues which will determine the direction the or-

ganization as a whole will take in the future.

Highlights of the convention included sessions with internationally-known speakers and talent, as well as educational workshops, individual and club competitions, and general sessions designed to motivate members to continue servicing their communities.

With almost 10,000 members on over 500 college and university campuses throughout the United States, Canada, Mexico, Jamaica, Bahamas, Grand Cayman Islands and Suriname, Circle K is the world's largest collegiate service organization maintaining ideals and objectives similar to its sponsor, Kiwanis International. The local sponsor of Wilkes University's Circle K is the Kiwanis Club of Wilkes-Barre.



The Wilkes Players are looking for people to help sets, lighting and technical work for their upcoming productions *Antigone* and *Charlie's Aunt*. Anyone interested contact Prof John Swanson in CPA.

By LYNNMARIE
ROSENCRANCE
Beacon Features Editor

As J...
"Paradise," W...
and "tearing...
put in a park...
The...
classes has ch...
observation...
missed the c...
struction on S...
The Universit...
three building...
Gutman house...
the Marts Cen...
across the stre...
the destruction...
university park...

Betsy L...
tor of Commun...
prior resident of...
stated Wilkes U...
midst of an hist...
district. This of...
them with new p...
the Wilkes cam...
Althoug...
closely with the...
Geological Soci...
maintain local hi...
the cost of savi...

**Back
Sav**

Over 6,000
Save \$279.95

Spreadsheet function
On-screen help and
Grammar Check
Catalog List Price \$579.95
Save \$38.00

TECHNICAL
INSTRUMENTS
Catalog List Price \$110.00
Save \$10.00

8 1/2" x 11"
WE DELIVER
DICK'S
BEE LEVY'S
Rt. 6, East of V...
Bee Levy Shoes &...
WILKES
WYOMING
107 Wyoming Valley, US...

THE BEACON

International

a whole will take

ights of the con-
ded sessions with
y-known speakers
s well as educa-
ops, individual and
tions, and general
igned to motivate
continue servicing
nities.

almost 10,000
over 500 college
sity campuses
ne United States,
ico, Jamaica, Ba-
Cayman Islands,
e, Circle K is the
st collegiate ser-
ation maintaining
jectives similar to
Kiwanis Interna-
local sponsor of
rsity's Circle K is
Club of Wilkes-

FEATURES

"Tearing Down Paradise to Put in a Parking Lot"

By LYNNMARIE ROSECRANCE

Beacon Features Editor and
ANDITA PARKER-LLOYD

Beacon Staff Writer

First in Series

As Joanie Mitchell sings "Paradise," Wilkes is following suit and "tearing down our paradise to put in a parking lot."

The chaotic first week of classes has clouded your skills of observation, you just might have missed the construction and destruction on South Franklin Street. The University planners have had three buildings torn down: the old Gutman house, previously next to the Marts Center, and two houses across the street. The reason for the destruction was to create more university parking.

Betsy B. Condran, Director of Community Relations and a prior resident of the Gutman house, stated Wilkes University sits in the midst of an historical preservation district. This often creates a problem with new proposals to enlarge the Wilkes campus.

Although Wilkes works closely with the Wyoming Valley Geological Society to preserve and maintain local historical structures, the cost of saving buildings like



the Gutman can be unreasonable. The University had considered lifting the building off of its foundation and relocating it to another lot behind its original lot. However, with the number of repairs needed

to restore the house and the cost of moving water, gas and electrical lines, the University decided against it.

Wilkes takes pride in their preservation measures when dis-

cussing the buildings in our historical area. Many of the campus buildings registered as historical buildings might have been torn down had they not been the property of Wilkes. Restoring registered buildings can be quite a task, both financially and physically. Wilkes has the financial resources that many private owners might not have available to spend on restorations and upkeep.

Many of the older homes in Wilkes-Barre were built between 1865 to 1925, reflecting the economic growth of that era. As Wilkes students, we often take for granted their beauty, and lack appreciation for the amount of labor expended to create such works of art.

The Wyoming Valley attracts many students of architecture because of the variety of styles. These students migrate here to learn from the masters of the past and consider the Valley to be an architectural gem.

Wilkes University alone has six buildings on the Pennsylvania Historical Register including Kirby, Sterling, Weckesser, McClintock, Catlin and Weiss. The latter three are also on the National Historical Register.

CHAOS by Brian Shuster



"Apparently, some kids hooked up your grandmother pacemaker to The Clapper."

CHAOS by Brian Shuster



"Darn these cutbacks!"

CHAOS by Brian Shuster



CHAOS by Brian Shuster



"Oh no, it's my husband! Quick, get back on the floor."

Back To College With Savings To The Max. At OfficeMax!

Over 6,000 school and office products drastically discounted every day!

<p>Save \$279.98</p> <p>Brother WP 3410 Word Processor</p> <ul style="list-style-type: none"> 12", 20-line by 80-character amber CRT display 3.5" 240KB floppy disk drive Spreadsheet function On-screen help and pull down menus Grammar Checker <p>Catalog List Price \$579.95 OfficeMax Everyday Low Price</p> <p>\$299.99</p>	<p>Save \$55.16</p> <p>Casio FX-115 Solar Plus Scientific Calculator</p> <ul style="list-style-type: none"> 154 scientific, mathematical and engineering functions Scientific calculator workbook included <p>Catalog List Price \$24.95 OfficeMax Everyday Low Price</p> <p>\$19.79</p>	<p>Save \$1.96</p> <p>Mead 3 Pack Wireless Notebook</p> <ul style="list-style-type: none"> 80 count Wireless College rule 8 1/2" x 11" <p>Catalog List Price \$4.35 OfficeMax Everyday Low Price</p> <p>\$2.39</p>
<p>Save \$35.01</p> <p>Texas Instruments TI-31 Graphic Calculator</p> <ul style="list-style-type: none"> Pull-down display menus Over 300 functions Interactive graphing features 8-line x 16-character display <p>Catalog List Price \$110.00 OfficeMax Everyday Low Price</p> <p>\$74.99</p>	<p>Save \$1.00</p> <p>K&M 1" Poly Binder</p> <ul style="list-style-type: none"> Poly material Resists moisture Fashion colors <p>Catalog List Price \$1.99 OfficeMax Everyday Low Price</p> <p>99¢</p>	<p>Save \$5.00</p> <p>Stanley Bostitch Half Strip Stapler Value Pack</p> <ul style="list-style-type: none"> Includes compact pinch type stapler Box of 5,000 staples Staple remover <p>Catalog List Price \$9.95 OfficeMax Everyday Low Price</p> <p>\$3.95</p>
<p>Head 8-Star 1 Subject Notebook \$8.19</p> <p>Head 8-Star 2 Subject Notebook \$1.99</p> <p>Head 8-Star 3 Subject Notebook \$1.99</p> <p>Head 8-Star 4 Subject Notebook \$1.99</p> <p>Head 8-Star 5 Subject Notebook \$1.99</p> <p>Head 8-Star 6 Subject Notebook \$1.99</p> <p>Head 8-Star 7 Subject Notebook \$1.99</p> <p>Head 8-Star 8 Subject Notebook \$1.99</p> <p>Head 8-Star 9 Subject Notebook \$1.99</p> <p>Head 8-Star 10 Subject Notebook \$1.99</p>	<p>Head 8-Star 11 Subject Notebook \$1.99</p> <p>Head 8-Star 12 Subject Notebook \$1.99</p> <p>Head 8-Star 13 Subject Notebook \$1.99</p> <p>Head 8-Star 14 Subject Notebook \$1.99</p> <p>Head 8-Star 15 Subject Notebook \$1.99</p> <p>Head 8-Star 16 Subject Notebook \$1.99</p> <p>Head 8-Star 17 Subject Notebook \$1.99</p> <p>Head 8-Star 18 Subject Notebook \$1.99</p> <p>Head 8-Star 19 Subject Notebook \$1.99</p> <p>Head 8-Star 20 Subject Notebook \$1.99</p>	<p>Head 8-Star 21 Subject Notebook \$1.99</p> <p>Head 8-Star 22 Subject Notebook \$1.99</p> <p>Head 8-Star 23 Subject Notebook \$1.99</p> <p>Head 8-Star 24 Subject Notebook \$1.99</p> <p>Head 8-Star 25 Subject Notebook \$1.99</p> <p>Head 8-Star 26 Subject Notebook \$1.99</p> <p>Head 8-Star 27 Subject Notebook \$1.99</p> <p>Head 8-Star 28 Subject Notebook \$1.99</p> <p>Head 8-Star 29 Subject Notebook \$1.99</p> <p>Head 8-Star 30 Subject Notebook \$1.99</p>

8 1/2" x 11" 20# WHITE BOND: SELF-SERVICE COPIES 4¢

WE DELIVER! To your office or home with orders of \$12 or more, within our trading area.

DICKSON CITY
BEE LEVY SHOPPING CENTER
Rt. 6, East of Viewmont Mall, Next to
Bee Levy Shoes & Circle Drive-In Theatre.
383-3820

WILKES-BARRE
WYOMING VALLEY MALL
107 Wyoming Valley, US Route 115 and Mundy Street.
829-1400

OfficeMax®

Savings is the Bottom Line!™

Store Hours: Sun 11am-6pm • Mon-Fri 8am-9pm • Sat 9am-9pm

FITNESS STUDIO
595 MARKET ST.
KINGSTON

Come in ... FREE TRIAL WEEK!

2ND FLOOR

AEROBICS
MON.-SAT.

MEMBERSHIPS:

\$4.00/ class

\$35.00/ month
(College Students
\$30/ month
with College I.D.)

CALL TODAY!!!
288-8511

MON.
4:15,
5:30
Lo&Hi
impact
TUES.
7:00
Lo & Hi
impact
WED.
4:15, 5:30,
Dyna-Band/S
THUR.
4:15
Dyna-Band
Lo&Hi
impact
FRI.
4:15,
5:30
Step
SAT.
11 am
Lo&Hi
impact

S P O R T S

Men's Soccer Team Needs to Rebuild in the 1993 Season

By **DAVID McCABE**
Beacon Sports Editor

The Wilkes University men's soccer team will head into the 1993 season trying to replace five members lost to graduation who, while at Wilkes, combined for an all-time class record of 52-45-5, including four straight ECAC (East Coast Athletic Conference) play-off berths.

The Colonels must also find a way to replace Wilkes' all-time leading scorer, Paul Jellen.

The Colonels have only seven letterwinners returning from a team that went 11-6-3 and won the MAC NE (Middle Atlantic Conference Northeast) championship last year.

Phil Wingert, who will be

starting his 12th year as head coach at Wilkes, will rely on senior co-captains Dave Unzicker and Dean Kontometros to provide leadership on this year's squad.

Also returning are juniors Mike Herb and Chris Erb. Herb finished second on the team in scoring a year ago with 24 points, while Erb finished the season with 10 points.

Junior Jeff Gocsek and sophomore Russ Hiser are also expected to have an impact this season as starters.

Meanwhile sophomore Chad Heffner will contribute on the defensive end.

The Colonels will also have to replace goalkeeper Matt Hanes, the starter for the past two seasons.

Wingert said that, "right now, the replacement for goalie is a big question mark. It will probably be the key to our success. We need someone to step forward and take charge."

Freshmen Jim Silver and Brian Jacobson will compete for the starting role.

Wingert feels that "this year's class has the opportunity to impact the program immediately. With only seven lettermen returning, I hope the freshmen will legitimately challenge for starting roles."

The Colonels opened the season at home against Baptist Bible yesterday afternoon. The team will travel to Dover, DEL for the Wesley Tournament this weekend.

UPCOMING SPORTS EVENTS

Saturday, September 4

Men's soccer, at Wesley, 1 p.m.
Women's soccer, Bryn Mawr (home), 1 p.m.
Volleyball, at Swarthmore, TBA
Field Hockey, at Wells, 2 p.m.

Sunday, September 5

Men's soccer, F & M (at Wesley), Noon

Tuesday, September 7

Field hockey, Misericordia (home), 4 p.m.

Wednesday, September 8

Men's soccer, at Bloomsburg, 4 p.m.
Women's soccer, Swarthmore (home), 4 p.m.

**GOOD LUCK
COLONELS!!!!**

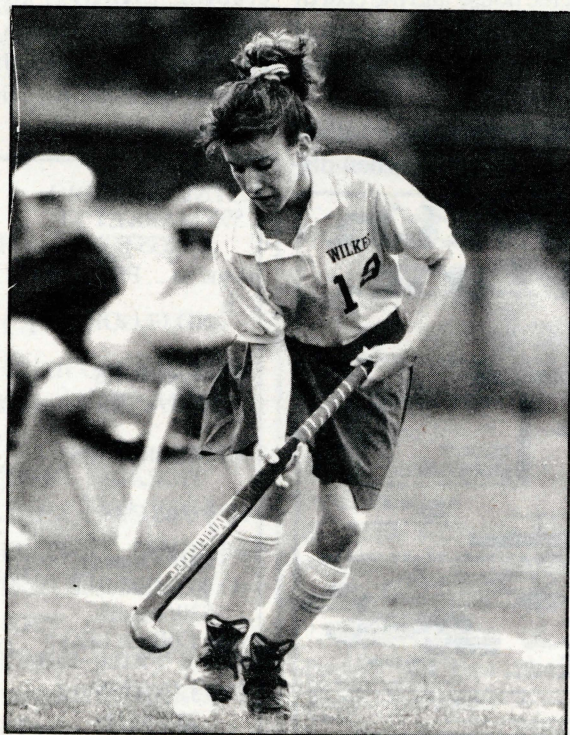
Lady Colonels Are Ready to Return to the Field

By **MIKE MONTEVEGO**
Beacon Staff Writer

Based on last season's performance the Wilkes Lady Colonels Field Hockey team has some high expectations. After compiling a 10-8 record last year, which is the most wins since 1979, the entire Lady Colonels squad is returning and ready for action this season.

Head coach Addy Malatesta is one person with high expectations for the upcoming season. Malatesta stated, "I anticipate that the returning players from the successful '92 squad will once again step up and be the leaders for an even more successful 1993 season."

Coach Malatesta is returning for her fifth season at the helm of the Wilkes field hockey program. Through hard work Malatesta has turned the Lady Colonels into a feared team in the Middle Atlantic Conference (MAC). Last year's record pushed Malatesta's career mark at Wilkes to 29-30-7.



Toni Farinella returns to the Lady Colonels for the 1993 season.

Before coming to Wilkes, field hockey coach there she Malatesta, a native of Berwick, PA, coached for Potsdam and had teams earn regional rankings as well as four New

York state play-off berths.

Many players will be looked upon to step up and make the season ahead a successful one for the Wilkes squad. One of these players is Toni Farinella who is returning for her senior year as the fifth all-time leading scorer in Wilkes' history with 22 career goals. With her "all-out" style of play, Farinella received MAC Northwest League honors for the first time last season.

Two other seniors, Justine Nemshick and Ali Adomiak, were important players last season. Nemshick who is a three-time starter is tough on the defensive end of the field, while Adomiak is an offensive threat.

As a freshman last year, Kim Kaskel showed a maturity by backing up Farinella offensively netting seven goals. Meanwhile, Theresa Havel, another sophomore, helped both Farinella and Kaskel by adding four goals herself. Both Kaskel's and Havel's development will be a key for the Lady Colonels.

Defensively, Phuong Bui, a sophomore from Wilkes, PA, has become an anchor for the Lady Colonels. As newcomers to the roster, sophomore transfer Sarah Richardson will help the scoring effort, while Noelle Brooks and Lee Meyers will add depth to the defense.

However, the Lady Colonels are faced with a very demanding schedule. With teams like Bloomsburg and national champion William Smith now included in the MAC conference, the Lady Colonels will now compete in a new structured MAC as a member of the Freedom League. For league honors, Wilkes will battle with Scranton, Delaware Valley, FD, Madison, Lycoming, and King's.

The Lady Colonels start their season at home this Saturday at 1 p.m. against Bryn Mawr.

Volum
Septem

Tay

By GINA M
News Write

Two new
appointed t
versity staff
lor was nam
ate Studies
Giamartino
dean of the
ness, Soc
Policy. Bot
pects for the

In her m
lor makes s
is always o
the student
and forem
excited abo
Taylor.

Taylor h
University
those 24 ye
as the presi
Association
the Faculty
and preside
vania Econ

Ch

By BRAD
Co-Copy E

More t
ticipated at
the annual
that clubs u
Every
Amnicola, t
MultiCultu
tion was pr
There
faces in the