

New Parking Gates Are Installed

Admittance To Three Lots By Magnetic Card Only

The installation of the parking gate system at several campus parking lots will soon cause a problem for those commuting students who presently park there. The new system, though not completed, is installed at Parrish, Weckesser and Franklin parking lots.

The parking gates, which are financed by operating funds, require possession of a special card being issued only to administrators, faculty and staff members. The lots at Franklin and Weckesser are open only to those working in their respective buildings, but the Parrish lot is available for parking to all card holders.

Parking at these lots will be available to students who attend night classes, at which time the gates will be left open.

To enter the lot, the magnetic card must first be placed in the machine in order for the gate to raise.

"Contrary to rumors that the recent system will cause traffic tie-ups, the machines are situated at least two car-lengths away from the street," stated Charles Abate, business manager at Wilkes College.

He also mentioned that the school is looking for various solutions on student parking. Though there are not immediate plans to affect the present students, the college's master plan calls for the construction of a parking garage in the far future.

"The college is well aware of the shortage of parking and tried to solve the problem over past years. The shuttle bus system was enacted twice, but failed both times," remarked Abate.

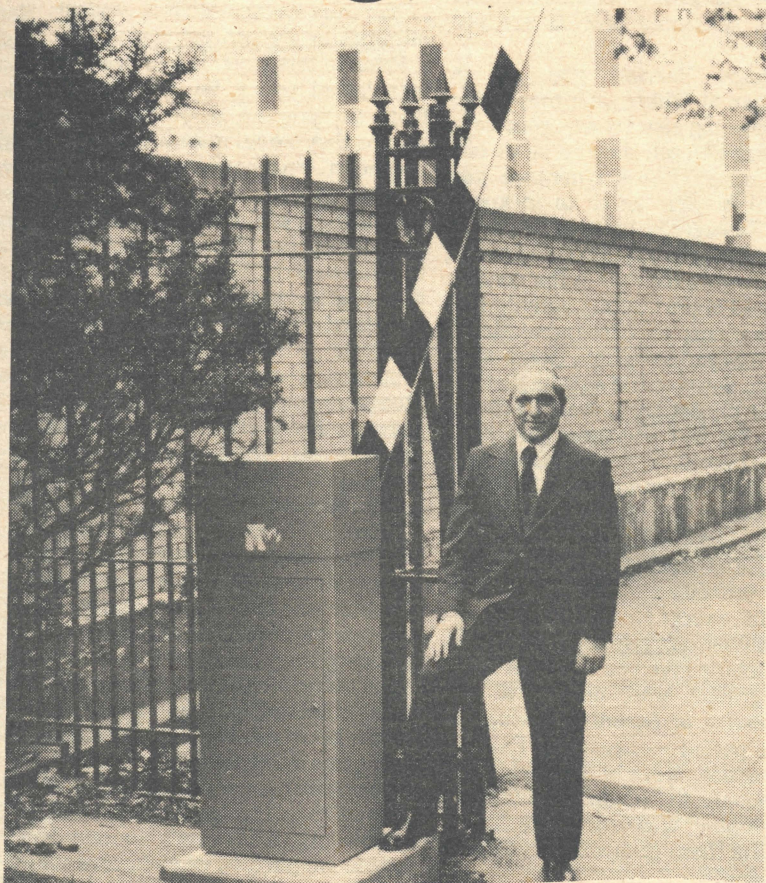
"Even if the meters would allot more time to the students for the nickel, this could reduce some of the financial burden, but the meters are a valuable source of revenue to the police department," Abate continued.

Students have legitimate gripes when they receive tickets even though the meters are not operating properly.

It's not as if student parking is a new problem faced by the college and commuters. Abate himself experienced the same frustration of filled spaces and countless parking tickets when he attended night school four nights a week a few years ago.

The problem of parking is not only confined to the college; the city's redevelopment board is planning the construction of another high-rise parking structure on North Main Street.

Parking has been a problem here at Wilkes for many years, and probably will remain a significant issue for years to come; but at least steps are in the planning to alleviate the situation in the future.



Charles Abate, business manager at the college, is checking out one of the gates which will be in operation very shortly. The device, located at Weckesser, Parrish, and Franklin parking lots, will allow only authorized personnel to park.

Entrance to these lots will be by magnetized card only, with the bearer inserting the card into the device and the gate rising to allow admission. The cards have been distributed.

It is hoped that the gates will alleviate the congested areas in the lots which have been set aside for administration and faculty.

Jose Ribas Passes Away

Professor Jose M. Ribas, 52, of 81 W. Northampton Street, Wilkes-Barre, on the faculty of Wilkes College, was pronounced dead on arrival at Mercy Hospital Saturday night at about 8:30. Death was due to heart failure.

Born August 29, 1921, in Spain, he was a member of the Language Department at Wilkes College for some eight years. Professor Ribas was dining with several other language teachers at the home of Herbert Simon, 1 Vine Street, Lee Park, when he was stricken ill at 8:15. He was taken to the hospital by the Hanover Township ambulance and was pronounced dead there. Luzerne County Coroner Dr. George E. Hudock and Deputy Coroner Walter Lisman investigated and are in charge of the matter, along with college officials.

Attempts are being made to contact a brother in Gerona, Spain, and a sister in Venezuela.

Two Tax Experts To Speak Here Tomorrow

Two recognized experts in the field of taxation — Martin Helpern of Laventhol, Krekstein, Horwath & Horwath in New York, and Atty. Bruce Lane of Frosh, Lane & Edson in Washington — will be among the key speakers at the Twentieth Annual Tax Clinic tomorrow at Wilkes College.

More than 100 tax practitioners from a six-county Northeastern Pennsylvania region are expected to attend the day-long affair at the college's Center for the Performing

Arts.

The clinic is specifically tailored for accountants, lawyers, bankers, industrialists and those interested in obtaining up-to-date information on the subject. It is designed to provide the latest detailed developments in the tax structure of the nation.

After registration at 8:30 a.m., the participants will be welcomed by President Robert T. Kelly, C.P.A., of the Northeastern Chapter of the Institute of Certified Public Accountants. Dr. Francis J. Michelini,

president of Wilkes College, and Dr. Robert Werner, chairman of the Department of Commerce and Finance at Wilkes College, will also address the businessmen and women.

Martin Helpern, of Laventhol, Krekstein, Horwath & Horwath, New York, will give a talk entitled: "Mini, Maxi or Average," at 9:15 a.m. to 10 a.m.

Following a half-hour coffee break, the clinic will resume with "Fringe Benefits & Executive Compensation," by Francis M. Gaffney of

Arthur Anderson & Company, New York.

At 11:15 a.m., the agenda calls for a lecture by John M. Hofman of Price Waterhouse & Company, Philadelphia, to speak on "Sub-Chapter 'S' Revisited."

Guest speaker Langhorne B. Smith of Coopers & Lybrand, Philadelphia, will precede lunch with a discussion concerning personal holding companies.

The afternoon's program will be

split with a second coffee break at 2:45 p.m. to 3:15 p.m.

Beginning promptly at 3:15 p.m., Bruce Lane of Frosh, Lane & Edson, Washington, D.C., will present "Tax Problems of Real Estate Developers."

A question-and-answer period at 4 p.m. will conclude the day's program. The proceeds from the Twentieth Annual Tax Clinic will go towards a scholarship fund set up by the Pennsylvania Institute of

(Continued on Page 5)

Annual Exhibition of Science Clubs Saturday

The Eighth Annual Exhibition of the Science Clubs of Wilkes College will be held here on Saturday. Sponsoring the eighth annual event are the Mathematics, Physics, Chemistry, Engineering, Environmental Science, Biology and Psychology Clubs and the Human Services Committee.

The day-long exhibition will be held in the Stark Learning Center at Wilkes. It is open to high school students, especially those who are considering the pursuit of science at the college level. The exhibition is held to further the students' interest in the various fields of science.

Shown in the photo at right are the student chairmen of the exhibition and their respective clubs. They are from left to right, bottom row: Cliff Dungey, chairman of Science Fair, Dallas; F.W. Paulewicz, Engineering, Alden Station; Pete Waskiewicz, Engineering, White Haven; Richard Gapinski, president of Chemistry Club, Nanticoke; Jody P. Zakrevsky, co-chairman, Chenango Bridge, N.Y.

Second row: Robert Dzugan, Mathematics, Nanticoke; Michael Murphy, Physics, Wilkes-Barre; Steve Grossman, Psychology, Kingston; Mike Trubio, Biology, Dupont.

Third row: Christine Buchina, Mathematics, Wilkes-Barre; Ginny Edwards, Human Services Committee, Wall Township, N.J.; Marie Kacyan, Students for a Clean Environment, Moorestown, N.J.

Participating students will meet at the Wilkes College Center for the Performing Arts at 9 a.m. for registration. The students will spend the morning becoming acquainted with the school and the various scientific fields. A lunch will be provided for all students free of charge.

After lunch, the students will again explore their various areas of interest. All activities will come to an end at 3:30 p.m.



Editorially Speaking

Can't We Park Here?

Perhaps the parking problem is an overworked subject, but nothing is being done to help the situation. With the addition of the parking gates in Weckesser, Parrish, and Franklin parking lots, students can no longer sneak into the above mentioned lots.

Why should a commuting student, paying \$2,000 as of next September, be forced to put up with this abuse? As it stands now, he can park at a meter and take the chance of going over his limit by a couple minutes and getting nailed by an "eagle-eyed" policeman or pay a nice sum of money to park at a municipal parking lot.

It seems funny to us that Student Government can put forth a concert and pay \$5,000 to secure a group that very few people were happy with, yet they have shown little or no interest in the parking problem. Ironical, that such a "trivial" subject gets pushed aside.

We think its about time that Student Government, whose shoulders part of this problem falls on, woke up and started thinking about the students they serve. Whether they like to believe it or not, more students are driving cars these days than ever before and these vehicles have to be parked somewhere while the student attends classes.

King's has solved its problem by building a parking garage that allows the student to park all day for 50 cents. Certainly, if King's could do something of this nature, Wilkes can come up with a solution to its problem.

Isn't it ironic that come next September, if nothing is done to alleviate the situation, a student will pay \$2,000 to come to school yet when he gets here have no place to park the car that got him there!

This is our last issue

until Thursday, November 29.

Happy Thanksgiving!

BEACON STAFF

Editor-in-chief Jim Torbik
Copy Editor Andy Petyak
News Editor Chuck Riechers
Op-Ed Feature Editor Rich Colandrea
Sports Editor Paul Domowitch
Business Manager Ginny Zembruski
Advertising Manager Al Rosencrance
Circulation Manager Fran Polakowski
Reporters Sandy Akromas, Deborah Ann Hargraves,
Floyd Miller, Donna Donces, Mark Carmon, Randy Steele, Ron Noyalis,
Pat Gurney, Diane Guterman, Kathy Mansberry, Chris Pantelakos,
Lisa Waznik, Donna Wasilewski, Patrice Stone,
Shelley Busa, Patti Reilly, Ed Gorski, Marianne Montague

Advisor Thomas J. Moran
Photographer Jim Kozemchak (Paramount Studio)

Editorial and business offices located in
Shawnee Hall, 76 W. Northampton Street
Wilkes-Barre, Pennsylvania 18703
Published every week by students of Wilkes College
Second class postage paid at Wilkes-Barre, Pa.
Subscription rate: \$4 per year
Beacon phone: (717) 824-4651 ext. 263
All views expressed in letters to the editor, columns
and viewpoints are those of the individual writer,
not necessarily of the publication.

Student Wants Rock Concerts

To the Editor:

There are two questions I would like to ask of Harriet Scheideberg concerning her letter to the Beacon last week. First — what the hell do you mean by "the stamina of a college student." Second — what type of reasoning process are you using?

Perhaps Harriet, you are a freshman at Wilkes, and maybe the Homecoming concert was your very first rock and roll show; if so we can chalk up the gross ignorance you showed in your letter to inexperience. However, I have been part of the Wilkes Family for three years, and although the cost of the concert was paid in part by my activity fee, and I was entitled to free admission, I nevertheless gave my ticket to a derelict down on the square. Let me explain my actions merely by giving you a list of performers that have played here since my freshman year at Homecoming and Spring Weekend concerts — The Byrds, Sha-na-na, Eric Anderson, John Hammond, Poco, The Eagles, John Hartford, and the Earl Scruggs Revue. Harriet, except for Sha-na-na do you see any pattern? If not, you should. Now let me give you a partial list of the groups who played at the University of Scranton during the same period — Seatrain, Fairport Convention, Steve Miller Band, Mott the Hoople, the Rokin Trower Band, and Edgar Winter's White Trash. Some of these groups are even from England!

You see, Harriet, the student body as reported by Rich Colandrea is not bitching because of the choice of the Earl Scruggs Revue and John Hartford, it is just that we are fed up going to the University of Scranton or Bloomsburg to see a legitimate rock show — a privilege denied us by the prolonged country - western - folk trend here at Wilkes.

Love always,
Mike Paternoster

Concert Opinion Is Conflicting

To the Editor:

I would like to forward my opinion in response to a letter from Harriet Scheideberg concerning Rich Colandrea's opinion column.

I for one — and I know of many,

many others — fully agree with Rich in his opinion of the concert this Homecoming past, and in no way do I feel demoralized or slandered by his opinion.

Surely the largest disaster of the concert was not its being held up by the World Series broadcast. All of this may have been a blessing in disguise. The greatest disaster had to be the misrepresentation of student interests by the concert committee.

Prior to this year, it has been an established policy for the student body to vote for those people or groups they would most like to hear in concert. What happened to the vote for this year?

Myself, I like John Hartford and I can tolerate Earl Scruggs from time to time. In fact I like most bluegrass and country music — but I do not represent a majority and I cannot visualize where the performers represented one either. It is the students who pay, at least in part, for the show and, therefore, the students should at least have some opportunity to decide on the performers.

Simply because one person enjoys a banjo does not mean that the majority does. There are many who would prefer to hear the horns of Chicago or, more realistically, the guitars of Dave Mason or the piano of Elton John. Certainly because Rich doesn't like banjo picking (which has never been established) does not make him ignorant or impatient — indeed it is much more ignorant and hainnalike to infer such connections.

Certainly, a concert's success is judged in part by the number of people attending. What made Woodstock, Watkins Glen and the Pocono concerts great? Of course the performers — they drew the people, but the masses of people, all united by music, make them great.

Homecoming concerts, or any concert for that matter, would be a success as long as the music was played — even if nobody came. At least according to Miss Scheideberg.

She condemns Rich for being ignorant, demoralizing, slandering and close-minded. To me she is much more ignorant and close-minded than the one she seems so opinionated against. Why not wake up and look around — I'm sure a sample could be taken to prove my point.

Sincerely,
Rich Curry

Saturday, November 17.

Football-Wilkes vs. King's Point-Away
Junior Class Coffeehouse

Sunday, November 18

Faculty Recital-CPA-3:30 p.m.
Football Appreciation Dinner

Inter-Dormitory Council Meeting-2nd floor-Weckesser-7 p.m.

Monday, November 19

Sophomore Class Film — Carnal Knowledge

Tuesday, November 20

Student Government Meeting-Weckesser Board Room-7 p.m.

Wednesday, November 21

Thanksgiving Recess Begins at 10 p.m.

Friday, November 23

Anthracite Bowl Football Game-sponsored by Shawnee American Legion
Post 463-Wyoming Valley West Stadium-Kingston-8 p.m.

Sunday, November 25

To January 5

George Catlin Exhibit-Wilkes College Sordani Art Gallery-Stark Learning
Center-South River Street-Wilkes-Barre
Monday-Saturday 10 a.m. to 9 p.m.-Sunday 1 to 8 p.m.

Monday, November 26

Classes Resume at 8 p.m.

Tuesday, November 27

Student Government Meeting

Wednesday, November 28

Concert and Lecture Series Nuclear Physicist Stanton Friedman-
"Flying Saucers Are Real"-CPA-8 p.m.



WRITE ON

Drunken Driving Seen As 'Sound'

To the Editor:

The article dealing with drunken driving in the Beacon of 11/14 leaves something to be desired in question the basis for the Beacon accepting such an advertisement a time when the primary need Earth is to reduce the population, restraining people from doing things, even if it involves wrapping jalopy around a tree, should be considered as ecologically sound with all due respect to the involved, of course. If nature is drunken driving and the totalling vehicles as one way of selecting kooks who are to be dropped from population, why run an ad such a biologically sound practice. Getting the kooks and their crates the highways kills two birds with one stone.

Charles B. B.

Senior Citizen Thanks WCE

Dear Wilkes Community Effort,

On behalf of the Senior Citizens from Glen Lyon and Nanticoke I attended the dinner and the party on October 17, 1978, myself, I wish to express our thanks and gratitude for the courtesies, services, and the red carpet treatment bestowed upon us, by the students participating in the affair. It made our tomorrow brighter. We felt like a "Queen of Day," and look forward to sharing another affair as such.

Wilkes-Barre, Wilkes College, the parents of the girls in Sturdevant Hall should be proud are! The mannerism, behavior, of all the students at the dinner theater, and intermission time was the best we've seen anywhere, in such an enormous crowd. During the performance of "The Crucible" you could hear a pin drop and there were hundreds of students attending. Hats off to all youth, we proud of all of you.

Dinner at the dining hall was excellent. The cook and staff were most gracious.

May we meet again.

Sincerely,
Tillie Novak

NEWS • VIEWS • THINGS

In One Man's Opinion

by Rich Colandrea

Constructive Criticism

Over the past few months, the *Beacon* has received a variety of replies to different columns, viewpoints and articles that we print each week. Some of these letters are of great importance in an effort to improve this paper. This can be done only if they are written in a constructive manner.

Our job as *Beacon* staff members is to report and editorialize on different events that take place in conjunction with this college, this country, and this world in which we live.

All the facts that appear in these articles are as accurate as possible, and our controversial viewpoints are written in an attempt to express our views and the views of others. Granted, we do make mistakes in reporting and news writing, but we are only human and we try to keep our errors to a minimum.

However, when we do make mistakes and when people disagree with our opinions, editorials and coverage, we should be informed of it in a constructive manner. Receiving these letters pointing out mistakes and offering contrasting views helps us to make this paper of a higher caliber, if it is done the right way. We welcome any comments either by letter form or verbally if they will help us see the light. Any newspaper that doesn't receive any type of criticism isn't doing a decent job.

Sometimes in criticizing, people tend to downgrade something just for the sake of saying something destructive instead of trying to correct mistakes in a constructive way. Some people, in the process of trying to make someone look foolish, actually make themselves look like a moron, which carries little use. No one gains from this type of criticism. It just wastes time and space. If you don't have anything constructive, whether positive or negative, to say, then don't say anything at all.

In regard to this column, issues are written about which require the need for discussion in order to find a proper solution. Yes, it's opinionated, and an opinion cannot be faulty, just controversial. It is purposely written that way, hoping someone will either agree or disagree, air their views and not remain silent.

All opinions are welcomed by this paper. It is hoped that all comments, regardless of type, be constructive in nature, not destructive.

Factors of Energy Supply

Noting that "no one on earth can predict the outcome," Frank N. Ikard, president of the American Petroleum Institute, lists seven imponderables that will determine this winter's supply and demand balance for distillate oil. They are:

1. The weather. He said a winter three per cent colder than normal in the Northeast and Midwest would mean an increase in demand for distillate fuel oil of nearly 600-million gallons, with demand increasing proportionately as the temperature declines.
2. The willingness and the ability of the American people to conserve energy.
3. Whether the current economic boom continues.
4. The extent to which oil must be used as a substitute for natural gas, supplies of which are expected to grow increasingly scarce.
5. The need for electric utilities and manufacturing plants to substitute oil for coal, primarily because of environmental regulations governing the burning of high-sulfur coal.
6. The amount of distillate which can be produced at U.S. Refineries. This will depend on the availability of the right kind of crude oil, and good luck in avoiding equipment breakdowns in refineries which have been running at close to 100 per cent of capacity for many months.
7. The ability to import distillate from Western Europe. This distillate will be more expensive and of higher sulfur content than domestic distillate, and in any case, there is great surplus of distillate available from Europe at this time.

Employee Conduct Survey

Employers today are making a greater effort to help employees improve their performance before the boss is forced to fire them.

This was revealed in a recent survey of personnel management executives by The Bureau of National Affairs, Inc., Washington, D.C.

Counseling and other non-punitive procedures are replacing more and more the hard-nosed disciplinary action of the past, the survey indicates.

In the past five years, 56 per cent of those companies participating in the survey made changes in their formal rules. These were in the areas of drug abuse, absenteeism, safety, dress codes and wage garnishments. Other changes include the elimination of suspension or layoff as a disciplinary procedure.

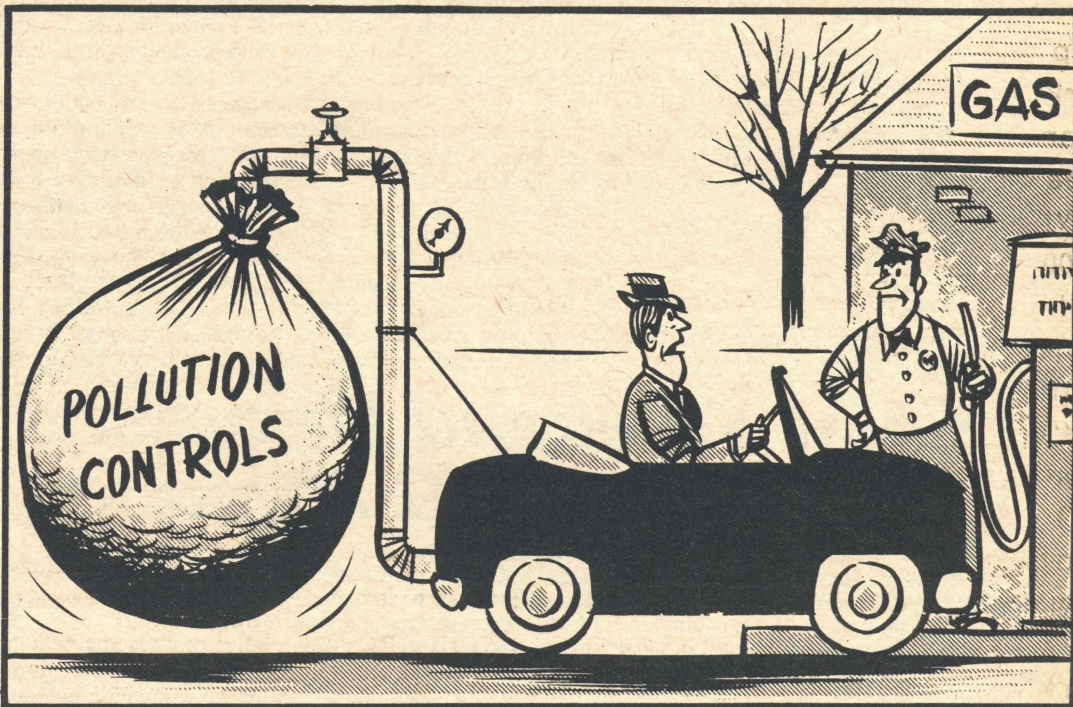
Although 85 per cent of those who responded replied that their rules for employee conduct are formalized and in writing, only 40 per cent said they specified exact penalties for infractions.

Discharge for the first offense is the most severe penalty and applies in cases of theft in 90 per cent of the companies indicating penalties; for

For other offenses, pre-disciplinary counseling procedures are followed in 85 per cent of the companies. Formal complaint or grievance procedures for appealing disciplinary action are found in 83 per cent of the firms.

The complete Forum survey report, "Employee Conduct and Discipline," is available from The Bureau of National Affairs, Inc., 1231 25th Street, N.W., Washington, D.C. 20037 at \$5 per copy.

'I Need More Gas To Make It Work'



TAKE CARE OF YOUR CAR

"You can't have your cake and eat it too" is an expression which particularly fits our present energy crisis.

In our determined search to eliminate air pollution, we have aggravated another growing national concern, the energy shortage.

This conflict of goals takes many forms, but one that affects each one of us is the control of automotive emissions. The control devices, particularly on the newer models, use more fuel. The Federal Office of Emergency Preparedness says that gasoline consumption has increased 300,000 barrels a day because of such pollution controls. It has meant the difference between adequate supply and shortage this year. It makes sense to hold emission standards at the present level as a conservation measure.

Regardless of what kind of emission controls are ultimately installed on autos, these devices will operate best if the vehicle is properly tuned. Proper maintenance will be as important in reducing automotive pollution as the control devices themselves. A well-tuned car runs more efficiently and gets better gas mileage.

This is a challenge to all involved in automotive maintenance work, car dealers, garage mechanics and service station operators.

Proper maintenance can be instrumental in achieving the broader goals of a cleaner environment and energy conservation.

QUOTATIONS

"A mother's patience is like a tube of toothpaste, it's never quite all gone." — William R. Lewis, *The Lynden* (Wash.) Tribune.

Ofttimes an open mind is one that is too porous to hold a conviction. — Fred W. Grown, *The Bergen* (N.J.) Citizen.

"Whatever else the neighbors may do, they give you something to talk about." — Ed Kummer, *The Eaton* (Colo.) Herald.

"Keep up the competitive spirit — when competition steps out monopoly moves in." — Mrs. Gary Hiott, *The Pickens* (S.C.) Sentinel.

"Whenever there is a crisis of some kind, the only way Congress can figure to solve it is to either levy a new tax or appropriate umteen million (or billion) dollars." — Bill Epler, *Brewery Gulch*, Bisbee (Ariz.) Gazette.

"The smallest package you'll ever see is a man wrapped up in himself." — J.D. Eldridge, *Overton County* (Tenn.) News.

Did You Know?

Women in Finland account for more than 75 per cent of the dentists, 25 per cent of the doctors, and 50 per cent of the druggists, the U.S. Labor Department reports. Most Finnish barbers are women and more than half of the bartenders are women.

Reading Rimbaud

A beautiful day in Wilkes-Barre!
Perhaps my friends will call for me
But I'm feeling evil and don't
want to go out and play
I should leave signs
Watch Out!
for when I'm mad I've got a thin mean smile
with a black beret and brooding eyes so
all must think I plot oblivion for my
senses on the verge of demonic revelation.

Ah yes my friends be met at the door
by someone embarrassed from my family
or by a kind christian nurse who brings me
her big breasts magazines sponge bath
and thick hot soup.
And so they be told
how it happened suddenly
He hardly talks to anyone
He sits in his room playing operas and
child-like and still sits staring out the window

Oh the torture
for no such luck awaits me
my fate far worse
to wear a jolly hat and chubby smile.
A thousand masks we collect and none of them can talk

Michael Scholnick

Dr. Richard Rees Publishes Education Article

One of the key members of the Department of Education at Wilkes College has had one article published nationally, and recently received word that two other articles have been accepted for publications that will be circulated among educators in the nation.

Dr. Richard T. Rees, as assistant professor of education at Wilkes College, has written an article, "The Bureaucratic Socialization for Student Teachers," which will be published soon in the "Journal of Teacher Education."

Dr. Rees is the son of Mr. and Mrs. William Rees, 45 S. Thomas Avenue, Kingston, and is a former Kingston High School football star.

Dr. Rees, who served in a similar post at Montclair State College

before coming to Wilkes, is working in conjunction with Wayne K. Hoy in producing the article. The duo has experience in the writing field, as they have previously written, "The Principal and Teacher Loyalty," which appeared in the "Rutgers University Research Bulletin" in the fall of 1971.

In 1974, Dr. Rees plans to come out with his third article, "Caution: Bureaucracy Ahead," which will be published in the "Contemporary Education" in the fall of 1974.

In his most recent article, Dr. Rees discusses the examination of student-teacher attitudes with respect to their bureaucratic orientation, pupil control ideology and dogmatism, and the effect of the student-teaching experience on those

attitudes.

Dr. Rees, now a resident of 10 Park Lane, Mountaintop, received his bachelor of science in secondary education from Wilkes College and went on to receive his master of education from Rutgers University in 1967. He received his doctor of education degree in 1971 from Rutgers University.

Presently he serves as a member of the College Admissions Committee and is sponsor of Wilkes-Malabar Drug Education program. He also teaches numerous courses at the local institution.

Prior to coming to Wilkes, Dr. Rees served as a vice-principal in Metuchen (N.J.) High School from 1965-1969 before going to Montclair State College in 1969. While at

Montclair, he taught "Educational Sociology," "Philosophy of Education" and "Teacher, School and Society." He also served as supervisor to student-teachers.

Between 1969 and 1971, Dr. Rees served as a research assistant in the office of Field Research and Studies at Rutgers University. In this post, he assisted in a variety of projects in local school districts, ranging from building evaluations to comprehensive studies. During this period, he completed the "Hierarchical Relationships in Public Secondary Education," a still unpublished dissertation which deals with the responses of teachers in terms of their loyalty and satisfaction to various types of leadership behavior of their school principals.

Besides his work in the field, the 35-year-old professor is a member of the Pennsylvania Association of Teacher Education, American Educational Association and American Association of University Professors. He is a delegate to the United States Office of Education and Education Conference.

Rees, the father of two, served in the United States Marine Corps from 1956-58 before being released with an honorable discharge. While in the service, he was awarded the honor of Meritorious Promotion, and also assisted as a reporter for the Eighth Air Battalion, Camp Lejeune, North Carolina.

Winter Weekend Discussed At Recent IDC Meeting

by Chuck Riechers

A Winter Weekend is being considered by the Inter-Dormitory Council. The weekend under consideration contains a full schedule of activities. Current plans indicate that the weekend would include a dusk to dawn movie series, coffee house, dances, snow sculpture contests, dorm parties and possibly other events.

The energy crisis was also discussed. Steve Placko, assistant dean for residence hall life, doubted that there was an energy crisis. If dorms want to reduce energy usage on a "voluntary basis," they may. The energy crisis will be a topic at a Deans' Council meeting. If Dean's Council meeting. Both skits the Council does act on the crisis, were well performed and were of a humorous and satirical nature.

A Reachout Carnival was held in the Wilkes Gymnasium Sunday afternoon to raise funds for the Burke family. One attraction was the oatmeal throw. Thirty-five cents permitted one to throw three patties of cooked oatmeal at Steve Placko, Pete Jadelis, Lee Auerbach or Mike Stambaugh.

The carnival also featured an egg toss and a shave a balloon contest. Some participated in the "smash a junk contest." A mid-size '65 vintage Chevrolet suffered very little damage. The sledge hammer handle, however, broke in two pieces as a result of repeated pounding.

Two dorms participated in "Skit Night" held Sunday evening at 8 in the CPA. Colonel's House, Pickering Hall, placed first with a presentation of "Dormlet," a Wilkes College dorm student version of "Hamlet." Sullivan Hall placed second on a close ballot with an imitation of a

IDC President Lee Auerbach is researching the possibility of a WATTS telephone system for Wilkes. IDC authorized Auerbach to send a letter of inquiry to obtain more information.

A Thanksgiving dinner will be served Sunday evening in the cafeteria. There will not be assigned times. Menus should be available today. Volunteers are needed for set-up Sunday from 2 p.m. on. The Sunday following Thanksgiving will feature a "Make Your Own Sundae Night."

An IDC representative queried Steve Placko about the maids in Pickering Hall not working during weekends. Placko responded first with there "won't be" maid service on weekends. He cited the cost factor involved due to overtime pay and stated that the college "can't afford" to hire maids for weekend work. Referring to the periodic actions of dorm students, Placko concluded his

remarks by mentioning that there would be "no need" for weekend cleanup "if people weren't pigs."

The change machine will be moved upstairs shortly since there is someone at the Pickering Hall reception desk 24 hours a day. Changing the phone numbers in the women's dorms to unlisted numbers has also been discussed.

It was announced that intramural banners will cost \$35 a piece.

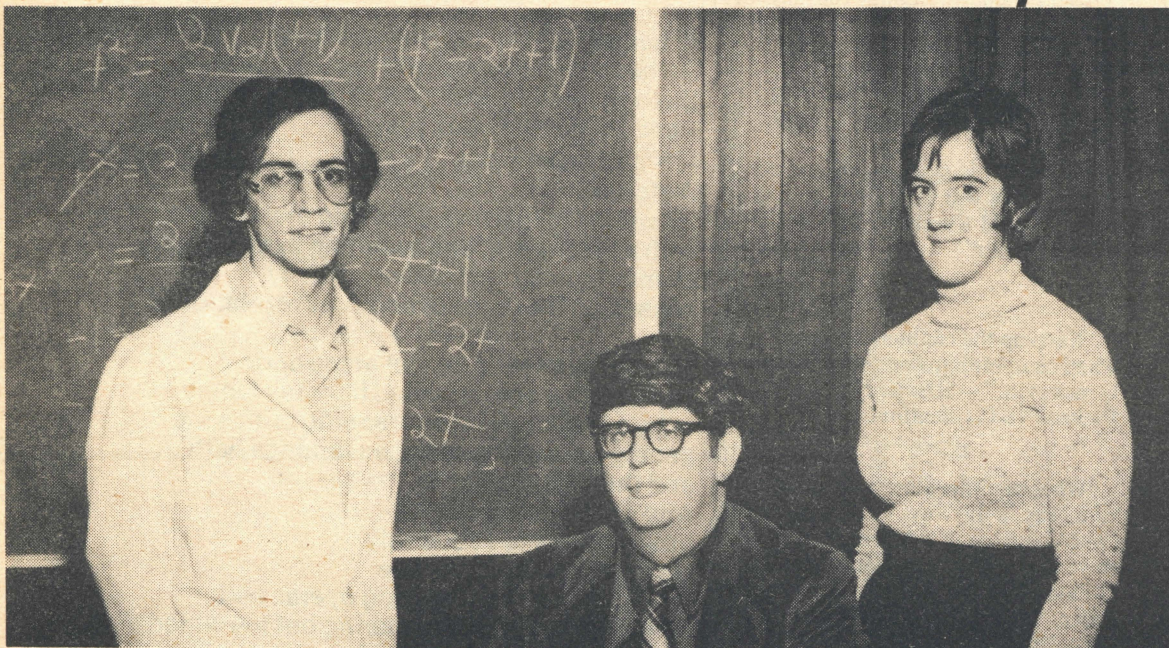
Residence halls will close Wednesday evening by 11 p.m. and reopen Sunday at 1 p.m.

John Chwalek needs ushers for a Business Conference to be held in the CPA the weekend of November 23. Dean Whitby needs students interested in going to their alma mater and assisting him in recruiting students during Semester Break.

Drs. Leach and Furlow will lecture tonight in the cafeteria at 7:30 on "Impeachment and Its Implications."

The Sophomore Class will present the film "Carnal Knowledge" Monday evening.

Wilkes Grads Present Final Papers



Two graduate students in the Wilkes College Biology Department have been selected to present scientific papers at the Southeastern Conference on Comparative Endocrinology, to be held on Friday and Saturday at the Marine Biology Laboratory of Duke University in North Carolina.

The graduate students are shown going over preparation for the assignment. Left to right are, standing: Robert Jarrett of Plains and Helen MacLellan of West Pittston. Seated is Dr. Reed D. Acheson, associate professor of biology at Wilkes College.

The conference will be attended by many notable biologists and is listed as a regional meeting designed to further information exchange in the field of endocrinology.

Miss MacLellan will present a paper entitled, "Cold Stree-induced Modification of Compensatory Ovarian Hypertrophy," which is the culmination of her master of science research at Wilkes. Jarrett will present a paper entitled, "The Effects of Temperature Variation of Serum Glucose and Cholesterol Levels in Carassius Auratus, Rana Pipiens and Albino Rats." This paper also represents the final product of Jarrett's master's research.

The presentation of these papers is notable in that both students are the first candidates for the five-year combined bachelor of science-master of science degree program in biology. This program was recently instituted at Wilkes.

SUPERSTAR ROCK EXCURSIONS

The greatest rock performers in the world are included on the Martz Trailways excursion schedule. Price includes choice reserved seats and direct, non-stop transportation. These shows are bound to sell out fast, so call Martz now for reservations.

SLY and the FAMILY STONE plus the exciting EARTH, WIND & FIRE

Dec. 7 Madison Square Garden (\$20 per person)

EMERSON, LAKE and PALMER

Dec. 11 Spectrum, general admission (\$16.50 per person)

BEACH BOYS

Dec. 14 Spectrum (\$16.50 per person)

ALLMAN BROTHERS

Dec. 28 Spectrum (\$18 per person)

STEVIE WONDER

Dec. 29 Spectrum (\$18 Per person)

SOLID GOLD SPECIAL

4 TOPS JAY & the AMERICANS
4 SEASONS MARTHA REEVE

Dec. 21 Madison Square Garden (\$20 per person)

MARTZ TICKET POLICY FOR RESERVED-SEAT CONCERTS

As soon as rock show dates are confirmed by promoters, Martz immediately orders tickets in the highest price category. Every possible effort is made to provide excursion passengers with the best possible seats.

Excursion Dept. Open Mon. - Sat. 8 AM - 5 PM
Information and Reservations Call 822-6175



Wilkes People Aid Flood Task Force



Students from Wilkes College will assist the Flood Recovery Task Force (FRTF) by conducting a poll of residents in the 45 flood-affected municipalities in the Greater Wyoming Valley. The poll is designed to give the residents a chance to express their views on the operation of their local governments.

Students aiding in the distribution of the poll are, left to right: Bottom row: Ann Sadonick, Exeter; Kathy Kaby, Wilkes-Barre; Marian Flynn, Wilkes-Barre Twp.; Angela Vauter, Union Dale; Trudy Kloptosky, Middlesex, N.J.; Jim Forth, Wilbur Smith and Associates, Columbia, S.C. Second row: Hugh Richards, Pittston; George Bellack, Kingston; Ron Oley, Plains; Richard McGuire, Wilmington, Del. Third row: Charles Makar, Nanticoke; John Decker, Laceyville; Alan Ramey, Maplewood, N.J.; Joseph Dzielan, Plymouth; John Shafer, Forty Fort; Tom Kiewlak, Nanticoke.

Andrew Shaw, Jr., executive director of the Task Force and director of Wilkes College Institute of Regional Affairs, announced that the FRTF had contracted with Wilbur Smith and Associates of South Carolina for a public opinion survey designed to complement the studies of local government conducted by the Pennsylvania Economy League and the Luzerne County Charter Study Commission.

The Task Force expects that the results of this survey will shed light on such unknowns as whether Valley residents believe they are getting their money's worth in services for their tax dollars, and which services, not now available, are desired. Persons polled also will be asked how responsive to their needs they feel their local government officials are.

All-Night Movie Series Proposed

Plans have been finalized to establish a magazine and used book store on the Wilkes campus. The store will be located in the faculty lounge of the Commons. Store employees will be paid \$1.80 an hour. Commuter Council is seeking an initial administrative grant and plans to use profits to pay salaries and other expenses.

The IDC extension of library hours proposal was passed by CC. Art Hoover, advisor to CC, suggested that IDC take steps, such as a survey, to improve the proposal's chance of passage. Student Government and Administrative Council must approve the proposal Wilkes-Lehigh meet are available in before implementation can occur. Art Hoover's office. Tickets are \$3

A vote of confidence was given to a per person. The wrestling team needs women interested in serving as timers and scorekeepers.

CC allotted \$60 to be spent for a The deadline for submitting Christmas tree and decorations for intramural basketball rosters is the Commons. A collection will be December 3. The name, address and taken to defray most of the cost of phone number of the captain must appear on the roster. Referees are required to submit their name and

Representatives from the State Farm Auto Insurance Company will phone number. visit the campus December 4 to Majorette tryouts will be held discuss no-fault auto insurance. Saturday evening in the gymnasium.

Reserved seat tickets for the Strutters will try out Sunday in the

Student government

by Chuck Riechers

A proposal was submitted to Student Government at its most recent meeting that proposes to increase student body choice of who is elected to serve on the Executive Council of SG. At present, the SG president is elected by the students, four of the officers are elected by SG representatives and two officers by IDC and Commuter Council. SG representative elected officers constitute a majority of the Executive Council.

The proposal stipulates that SG will nominate and the students will elect all SG officers. Also stipulated, new officers assume the office when election results are posted and the previous officers' terms of office end at this point.

The proposal also states that the vice-president immediately assumes the office of president if the office becomes vacant. If the other offices become vacant, the president calls a special meeting to nominate new officers. Within one academic week, new officers are elected by the student body. The officers are to assume office immediately after posting of election results.

The topic will be discussed at Tuesday's meeting of SG. Anyone having comments, ideas, suggestions or criticism should attend the meeting. Discussion on the topic is also recommended at class meetings.

The IDC extension of library hours proposal was discussed. The proposal only stated the proposed changes and very little background material concerning why the proposal was made. SG President

Pete Jadelis suggested that reasons be compiled and given, to justify the action and improve the chances of passage.

SG and IDC will work together on the proposed Winter Weekend project of IDC.

The Admissions Committee is seeking students who are interested in taking materials and information to their high schools about Wilkes College. Students will speak to the school guidance counselors and to interested high school students.

Changing the basis of the grading system to decimals or percentages has been discussed by the Academic Standing Committee.

The Insurance Federation Program is sending two representatives to the Wilkes campus to discuss no-fault insurance and distribute pamphlets. The meeting will be in Church Hall Tuesday, December 4, from 11 a.m. to 1 p.m.

Tom De Vito is the winner of the SG radio contest. The winning answer is "a hard hat."

Stanton Friedman will speak on "Flying Saucers Are Real" Wednesday evening, November 28, at 8 in the CPA.

The following was submitted this past week to the Beacon. It is a tribute to Bobby McBride who died as a result of injuries sustained on November 17, 1972, at Ralston Field.

In Memoriam

Bobby,

It broke many hearts to lose you,
But you did not go alone,

For part of Wilkes College went with you,
The day God called you home.

God took you from us without letting us say
good-bye.

We could do nothing but ask why.
I would have given anything to see you smile,
To have you and talk for a while.

Now we are tired of asking why
God took you away that day,
But he left in the hearts of all,
The memory of knowing a very
Beautiful Person

—Anonymous

WYOMING VALLEY MALL

Helen Gallagher Gifts



Monday - Saturday
9:30 AM to 9:30 PM

OUTLET ARMY & NAVY

113 S. Main Street
Downtown Wilkes-Barre



WE ALSO CARRY THE
NEWEST FASHION IN PLAIDS
BAGGIES & CUFFED FLARES

McDermott's

MOON DANCE INC.

RECORDS & TAPES

RECORDS
TAPES
IMPORTS

COMIC
PIPES
PAPERS

10 North Main St. Wilkes Barre

Phone 823-0281

Pinter Work To Be At CPA

The English Department in cooperation with The Manuscript Society will present The Marlboro Theatre Company, one of New England's noted repertory companies, in their performance of Harold Pinter's acclaimed play, "Old Times." The play will be presented in the Center for the Performing Arts on November 20, Tuesday evening, at 7:30 p.m. Admission is free.

Now in their seventh year, the Marlboro Theatre Company has been recognized not only as one of the leading acting ensembles in the New England area but also one of the most experienced interpreters of Pinter's work. They have, to date, mounted productions of six of Pinter's plays in Boston and at home in Marlboro, Vermont. Their production of "The Homecoming" at the Boston Center for the Arts was hailed by critics of the Boston Globe as "strikingly successful" and "one of the ten best productions of the year."

"Old Times" centers around the relationship of three characters; Deeley, a filmmaker; Kate, his

enigmatic wife and Anna, a friend from their past who returns to visit. Armed with humor and half-remembrances they carry on a fascinating investigation of what it is to be alive and human.

The production features Bob McDonald and Dinah Lane, both veteran members of the Marlboro Company, as Doeley and Kate. Ruth Benson, a New York actress formerly with Trinity Square Repertory in Providence, will be seen in the pivotal role of Anna. Lee Abraham, who has just completed production of an original work for the Loeb Experimental Theatre in Cambridge, will be the director.

Mathematics Dept. Receives Visitor

The Mathematics Department of Wilkes College during the week had as a guest a prominent member of the Center for the Application of Mathematics at Lehigh University on the Wilkes campus.

Dr. Rolf Adenstedt gave a lecture on significant applications of "Probability Theory" at the Center for the Performing Arts for the students, faculty and the public.

Receiving his B.S. degree in 1963 and his Ph.D. in 1967 from Brown

University, Dr. Adenstedt remained at Brown as an assistant professor of applied mathematics for the next two years. He has been associated with the Lehigh Center since 1969.

After the lecture, a coffee hour was held at the Annette Evans Faculty-Alumni House on South River Street.

The program was sponsored by the Wilkes College Mathematics Department.

College Pep Band To Form

You need not be a musician to blow your horn for Wilkes College. Due to the formation of the new Pep Band, you will be able to blow your horn, toot your flute, or otherwise bang on anything you can get your hands on.

To really get into it, this Pep Band is being formed for the enjoyment of the fans and to help team spirit.

You need not be a master musician to play in the Pep Band. As a matter of fact, you need not be a musician at all. All that you need do is have

access to an instrument and be willing to play it.

If you are interested in joining the Pep Band, come to the meeting in the gym lobby at 11 a.m. on Tuesday, November 27, or contact Mr. Hoover at the Alumni Relations office. His phone number is: 824-4651, ext. 375, 376 or 377. Let's start the seasons off with a BANG!!

EAST WING

91 South Main Street
Wilkes-Barre, Pa.

For the
Latest In Fashions
From Mexico
and India
For Gals and Guys

NOTICE

Senior Art Exhibit
BILL KERN
Sunday, November 25
Opening 8-11 p.m.
Monday - Friday
10 a.m. to 10 p.m.

GENERAL RADIO

587 South Main St.
Wilkes-Barre, Pa.

Stereo Record
SALE!

ALL \$5.98 Stereo Records

ONLY \$3.49

ALL LABELS
ALL ARTISTS
ALL LATEST ALBUMS

Lazarus PHOTO FINISHING

NEW "SILK FINISH
BORDERLESS MAXI-PRINT

12 Exp. Kodacolor
\$2.50

20 Exp. Kodacolor
\$3.50

Super 8 Movie and
35MM 20 Exp. Slides
\$1.60

35MM B&W Film
20 Exp. Roll
\$1.90

CAMERA CENTER
Street Floor DOWNTOWN
(Northampton St. Entrance)

Wilkes Debate Team Revived, Duquesne First Tournament

by Floyd Miller

This weekend, the Wilkes College Debate Team will attend their first tournament of the debate season at Duquesne University, Pittsburgh, Pa. It will be an eight-round, switch-side debate tournament, where all debaters will be compelled to debate both sides of the topic. William and Mary, last year's national champion, Penn State, will be several participating teams that Wilkes could go against.

While Coach Brad Kinney and his people are preparing for the Duquesne tournament, this reporter had the pleasure of talking to Dr. Charlotte Lord, who was involved in the Wilkes debate program in the early '60s.

When Dr. Arthur Kruger, the coach who established a strong program and a national reputation for debate at Wilkes College in the '50s, left, Dr. Lord and two other English Department members (then) were asked to work with the debate team. After two successful seasons, the program began to fold, with attempts to revive it failing.

Since the main cause of the folding was that so many people had other commitments, Dr. Lord is very enthusiastic that the administration has brought in someone specially trained in speech and debate to



Dr. Charlotte Lord

establish a new program. She felt that debate is an essential activity since it lends prestige to the school and at the same time, prepares students aspiring for careers where person-to-person communication and public address are essential.

Dr. Lord stressed that debate is "mind-expanding," adding that she has dedicated research on a number of topics over two semesters equivalent to that required for a master's thesis. Dr. Lord expressed her hope that Mr. Kinney and the entire speech and debate program at Wilkes meet with success, not only at Duquesne, but beyond to future years.

New Innovations In Library

Several innovations have been announced at the Eugene Sheddon Farley Library. The librarians have reported the establishment of a suggestion box on the first floor of the library. It is hoped that students and anyone else interested will respond favorably to the idea and deposit any gripes or constructive criticisms they may have in the box.

The items deposited in the box are then read and considered by the librarians and constructive answers are formulated. The replies of the library staff are then placed on a bulletin board above the suggestion box. In the replies, they will tell what the library is going to do about your problem, or why they aren't going to do anything. Responses to suggestions which are too involved for the bulletin board will be published in the Beacon.

It should be noted that those depositing suggestions or gripes needn't sign their names, but they would consider the signing of your name as an indication of your courage and convictions.

It was also confirmed that a

Library Guide has been prepared by the library staff for students' use. The nine-page, multi-lithed handbook is available to all students who present their ID cards at the circulation desk. The handbook comes complete with floor plans, charts and other explanatory items, to enable the student to understand his library and help him locate books, periodicals and other items more swiftly.

The library staff also noted that the library is planning to extend its regular schedule to 12 p.m. during examination time. As is usual, no library services will be provided after 10 p.m.

Can anyone do what you do any better?

You're pretty darn good at your job. But today, we all have to consider how we can do our work a little better. That's how each of us can help keep our jobs here in America. For now and for the future.

America. It only works
as well as we do.

Recital Scheduled

The Wilkes College Department of Music will present Richard Chapline and Michael Haberkorn in a Faculty Recital on Sunday, November 18, at 3:30 p.m. in the Dorothy Dickson Darte Center for the Performing Arts.

The recital "Music for Piano, Four Hands" will include in its program, "Grand Duo, Op. 140," by Franz Schubert played Allegro moderato, Andante, Scherzo-Trio, and Allegro vivace.

Following an intermission the program will continue with "Sixteen Waltzes, Op. 39," by Johannes Brahms and conclude with "Children's Games, Op. 22," by Georges Bizet.

Book and Card Mart

Provincial Towers
24 S. Main St.
Wilkes-Barre

Books, Records
And Tapes

Cliff & Monarch
Notes

GET INVOLVED - HELP A CHILD

BE A VOLUNTEER TUTOR AT YWCA

(Aided by United Way)

Aid one pupil one hour weekly

(1 - 12th graders from textbook)

(85% at, below poverty level)

or from severely flood damaged homes

This must be "The Year of the Number"
(Critical shortage math tutors)

Pupils: 1 - 8th modern mathematics

9 - 12th, Algebra, Geometry, Trig., Business and Regular.
Reading, English, Business, Science, Soc. Studies, History, etc.
tutors will be needed.

COMMUNICATE! Ask for, fill green tutor card at main

YM - YWCA Switchboard: Come in or Call

Mrs. Edward R. Janjigian, Volunteer Director,

YWCA Tutorial - 823-0181

11 - 12 noon, Monday - Thursday

3 - 7 PM, Monday or Tuesday

3 - 4:30 PM, Wednesday or Thursday

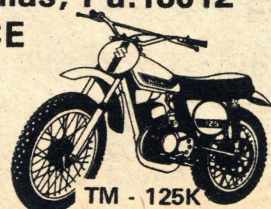


VALENTINE'S Suzuki Sales

Rt 415 & 309 Dallas, Pa. 18612
SALES . PARTS . SERVICE

MOTOR CYCLES &
SNOW MOBILES

JON VALENTINE Home 839-3754



TM - 125K

#1 PUB

Come in and Relax
To Stereo Music

SANDWICHES
From 11 a.m. to 12 p.m.

No. 1 North Main, W-3

Wilkes Booters Invited To ECAC Tourney

er 15, 1973

ed;
nt

e season at
all debaters
t, Penn, and
ter had the

a. She feels
al activity,
the school,
, prepares
eers where
munication
essential.
t debate is
dding that
a national
esters is
ired for a
d expresses
ey and the
program at
s, not only at
to future

one
at
o
ter?

good at
we all have
e can do
ter. That's
an help
America.
e future.

y works
e do.

HILD

ular.
ory, etc.,

main

UB

elax
usic
ES
2 p.m.

n, W-B

	JIM TORBIK	GEORGE PAWLUSH	ART HOOVER	BOB CORBA	B.J. VINOVRSKI	PAUL DOMOWITCH	DENISE WELSH	JIM NASIUM
MIAMI AT ALABAMA	Alabama 17-3	Alabama 27-13	Alabama 28-14	Alabama 33-9	Alabama 30-12	Alabama 40-22	Alabama 33-16	Alabama 29-10
OKLA. ST. AT COLORADO	Colorado 25-14	Colorado 23-16	Okla. St. 28-14	Colorado 24-11	Colorado 21-20	Okla. St. 14-13	Colorado 24-21	Colorado 24-13
KANSAS AT OKLAHOMA	Oklahoma 37-16	Oklahoma 43-17	Oklahoma 28-14	Oklahoma 35-31	Oklahoma 37-31	Kansas 20-19	Oklahoma 28-18	Oklahoma 30-14
JUNIATA AT DEL. VALLEY	Juniata 35-6	Del. Valley 10-7	Juniata 28-14	Juniata 17-15	Juniata 21-17	Juniata 31-12	Juniata 30-19	Juniata 24-13
MUHLBERG AT MUEHLBERG	Muhlenberg 14-3	Muhlenberg 24-17	Muhlenberg 28-14	Muhlenberg 16-6	Muhlenberg 28-0	Muhlenberg 16-7	Muhlenberg 20-15	Muhlenberg 25-10
WILKES AT WILKES	Wilkes 16-15	Wilkes 23-0	Wilkes 28-14	Wilkes 45-0	Wilkes 13-10	Wilkes 19-13	Wilkes 23-10	Wilkes 30-10
CLEVELAND AT OAKLAND	Oakland 35-23	Oakland 29-23	Oakland 28-14	Oakland 33-17	Oakland 30-19	Cleveland 17-14	Oakland 28-16	Oakland 25-6
DETROIT AT CHICAGO	Detroit 27-16	Detroit 18-12	Detroit 28-14	Detroit 21-6	Detroit 27-10	Chicago 27-21	Detroit 17-16	Detroit 27-10
MIAMI AT BUFFALO	Miami 35-28	Buffalo 21-10	Buffalo 28-14	Miami 44-14	Miami 33-17	Miami 21-14	Miami 27-20	Miami 33-13
LOS ANGELES AT LOS ANGELES	Los Angeles 16-13	Los Angeles 20-13	Los Angeles 28-14	Los Angeles 16-0	Los Angeles 27-6	Los Angeles 14-0	Los Angeles 31-12	Los Angeles 30-6

Travel To Susquehanna Tomorrow

The Wilkes College soccer team, coached by Tom Rokita, has been invited to participate in the Eastern Collegiate Athletic Conference's second annual post-season soccer tournament.

ECAC will conduct four tournaments next weekend simultaneously in the New England, Upstate New York, Central and Southern regions.

It is the first post-season playoff competition for the Colonel booters ever, who closed the season with a 6-1 setback to powerful Elizabethtown College.

Despite a 5-7-1 seasonal log, the Blue and Gold fared well against one of the toughest schedules of any of the ECAC's college division squads.

Also participating in the single-elimination championship Friday and Saturday at Selinsgrove are Franklin and Marshall, Kutztown State, and host Susquehanna. Elizabethtown won the Southern Regional crown last year.

Bama - Irish Probable Sugar Bowl Opponents

With the end of the collegiate season only a few weeks away, there are still six teams with a possible chance of capturing the national championship.

The Thanksgiving weekend will have a tremendous bearing on the number one spot, with many of the top ranked teams opposing each other.

Ohio State and Michigan who are two in the Beacon poll tangle Saturday, and the winner will presumably be ranked first.

Alabama and LSU clash head to head Thanksgiving night, with the winner being eliminated from championship contention.

Notre Dame who has an excellent record at the national title is expected to battle the Crimson Tide on New Year's Eve in the Sugar Bowl.

Alabama, who is ranked number one, will not be able to go much higher, because it is on a two-year probation and is not eligible for a bowl spot.

Here's a look at the top ten:

1. Ohio State
2. Michigan
3. Notre Dame
4. Alabama
5. Oklahoma
6. Penn State
7. LSU
8. USC
9. UCLA
10. Nebraska

-Domowitch-

Field Hockey Team Concludes Season

"When you sum it all up, it was a very good year," reflected Coach Gay Meyers, as the Wilkes College women's field hockey team concluded the 1973 season with a winning 6-5 effort.

"It was an extremely satisfying season for the girls, because this was supposed to be a rebuilding year," Mrs. Meyers explained.

Two of the Colonelettes' biggest victories were respective 2-0 and 3-0 shutouts over Bloomsburg and Mansfield State.

Coach Meyers, a native of Uniondale, was also happy with her squad's results in the Susquehanna Field Hockey Tourney last week at Penn State University.

The coeds finished 1-3-3 in post-season tourney play against the likes of Lock Haven State, Bucknell, Susquehanna, Bloomsburg and Penn State. Each of the games was 25 minutes in duration.

By far one of the finest moments in Blue and Gold history was a 0-0 deadlock with Penn State's team. Goalie Nancy Roberts and center halfback Susan Funke gained honorable mention on the All-Tourney unit. Also attracting

attention of the officials were Angella Centrella, Diane Jones, Donna Doncses and Penny Bianconi.

Prime mover in the coeds' attack this fall was senior Miss Doncses, who battered the nets for six goals and five assists. It was a fitting finale for Miss Doncses after three goals and nine assists last year.

A pleasant surprise for Coach Meyers was freshman Penny Bianconi, who displayed excellent offense with six goals and a pair of assists.

Placing high in the scoring parade were Marivita Saleski, two goals, three assists; Angella Centrella, four assists; Susan Funke, two goals, two assists; Ellen Schwartz, one goal, two assists; Dee Johnson, two goals; and Diane Jones, one assist.

New Organization Formed On Campus

Who ever said it was a man's world! Over the past few years, women have continually infiltrated the male sports domain, and we need only look at a few of the examples. The University of Tennessee, who possesses one of the best swim teams in the nation, has taken on pretty hot pants clad girls as scorers, timers, hostesses and other jobs associated with the team. And you won't hear the swimmers arguing!

On the Wilkes College campus, a new organization, "The Wilkes College Wrestling Colonelettes," is being formed. No, they are not going to wrestle. The group will aid in handling wrestling meets, tournaments, and other facets in our wrestling program. The organization is open to any woman who is

interested. Any female student wishing to be part of this organization is asked to attend the initial meeting on Tuesday, November 20, at 11 a.m., in Weckesser Annex.

**JANUZZI
PIZZA**
125 Academy St.

PIZZA
12 Varieties
HOAGIES
HOT DOGS
FREE DELIVERY
CALL
825-5037

'Bullseye' Drops To Third Spot

With the Beacon forecasting poll progressing into the last quarter of the season, Jim Torbik and B.J. Vinovrski, both share a piece of first place with identical 53-27 records.

George "Bullseye" Pawlush, who held onto the top spot since the first week of prognosticating, fell three games off the pace and is tied for third with Jimmy Nasium at 50-30.

Holding down second, two games behind the leaders are Paul Domowitch and Denise Welsh, with a 51-29 count.

Bob Corba, after experiencing a 9-1 week, has gained some ground on his competition and is only four games from the front.

Art Hoover is still trailing the pack, but at 44-36 is not out of the title picture. The last three weeks of the forecasting season should tell the whole picture.

1. Jim Torbik 53-27
1. B.J. Vinovrski 53-27
2. Paul Domowitch 51-29
2. Denise Welsh 51-29
3. George Pawlush 50-30
3. Jim Nasium 50-30
4. Bob Corba 49-31
5. Art Hoover 44-36

NOTICE

A limited number of reserved seat tickets for the Wilkes-Lehigh Wrestling meet at Bethlehem on December 1 will go on sale at 2 p.m., Monday, November 19, in the Alumni Relations - Student Activities Office (A.J. Hoover, third floor, Weckesser Hall).

Reserved seat tickets are \$3 each. Also available is a complete package for \$7 per person which includes round-trip bus transportation and reserved seat at the wrestling meet.

All bus and reserved seat tickets will be handled on a first-come, first-served basis.

HAVE A PROBLEM?
CALL THE -
Wilkes-Barre
Information
System Hotline
829-1341

A SERVICE OF YOUR
UNITED WAY AND THE
CITY OF WILKES BARRE

FULL SERVICE AUDIO STORE

STEREO SHACK
RECORDS & TAPES

PHONE
287-5246

PIERCE PLAZA
KINGSTON, PA. 18704



SEASON'S SPORT SHOP

96 South Main Street,
Wilkes Barre, Pa.

WILKES BARRE'S NEWEST & FINEST
SPORT CENTER - SPECIALIZING IN.....

Owned & operated by Professional skiers for skiers
SKI EQUIPMENT - SKI WEAR - SKI CARE

OPERATED BY WILKES GRADUATES

Ralph Presciutti - 73
Barbara Presciutti - 72

Jack Fetch - 73
Vince Crill C.S.I.A.

Two Off Campus Bookstores...
• Barnes & Nobel College Outline Series

• Full Line of School Supplies

• Cards and Gifts for All Occasions

DEEMER'S
Student Accounts Available

101 WYOMING AVE., KINGSTON — 6 WEST MARKET ST., WILKES-BARRE

BEACON SPORTS

Suppon Stars As Colonels Trounce Aggies

Gridders Facing King's Point In 1973 Season Finale

by Paul Domowitch

After an impressive 23-7 victory over Delaware Valley last Saturday, the Wilkes College gridders take to the road this weekend to face King's Point in their season finale.

The contest is a non-conference fray, but these two rivals never fail to present an exciting sixty minutes of football.

Coach Roland Schmidt has got to have his thoughts centered on two other grid contests this weekend, as Juniata faces Delaware Valley and Upsala meets Albright. A victory by either Del-Val or Upsala would give the Colonels a hard-fought MAC title.

Led by an explosive forward wall, the Colonel offense thundered for 402 total yards against the Aggies last Saturday. Chuck Suppon had his most successful day as a collegian running and passing for over 210 total yards offense.

John Baron, after being sidelined with an injury for most of the season, ran for 93 yards in only 10 carries, including a 58-yard ramble late in the fourth quarter.

Senior offensive guard Rich Lorenzen was rewarded for his fine play in Saturday's contest, by being selected to the weekly All-East team. The New Milford, N.J., native is regarded as one of the quickest linemen in Blue and Gold history.

The Colonel defense performed superbly in their final home encounter of the 1973 season, holding the Aggies offensive machine to only 160 yards total offense. Jeff Grandinetti, the outstanding 230-pound defensive tackle for Coach Schmidt, was in on 14 tackles, including one quarterback sack, blocked an attempted Delaware Valley aerial, and was responsible for a Colonel interception because of his fine pass rush.

One can all but hope that these fine efforts have not been futile as far as the MAC title is concerned, but whatever the case, the Wilkes gridders have performed like champions all season long.

Coach Schmidt and his entire coaching staff are to be commended for the fine job that they've done with this year's team.



BLUE AND GOLD SCORING POWER — Offensive back Freddy Lohman and linebacker-placekicker Tom Blaum are shown in action in the Colonels' big win over Delaware Valley last weekend.

Eaton Heads Anniversary All-Stars

Twenty-five years of Wilkes College soccer history unfolded Saturday afternoon as an all-time All Star squad, representing a quarter century of Colonel soccer was honored during halftime ceremonies of the Wilkes-Delaware Valley football game.

Since arriving on the scene in 1946, Colonel booter squads have registered an 89-133-29 record. Best one-season mark for the Blue and Gold came in 1966 when the locals went 9-2 and captured a share of the Northern Division championship.

Members of the elite Wilkes squad were introduced to Colonel rooters and presented with certificates commemorating the occasion. A dinner was held later at Hotel Sterling.

Comprising the special Silver "All-Star" team are: goalie — Charles Eaton '74; fullbacks — Ed Manda '69, Bob Linaberry '73, and Jerry Yaremko '69; halfbacks — Jim Kennedy '69, Kim Ferris '56, and Joe Morgan '60; line — Flip Jones '55, Nick Giordano '59, Rich Beck '68; Younsu Koo '56, and Carl Havira '60.

Chip Eaton — during his senior year he was paid the supreme compliment by many of the opposing coaches as one of the finest they ever faced at the position. Chip was a two-time All-MAC selection and possessed quick reflexes and most important for every goalie was that he could anticipate any offensive move. Chip is currently serving as an assistant to Coach Tom Rokita and will complete his degree requirements next June.

Ed Manda — was selected to the NCAA Coaches All-American team in 1966 and 1968. A native of Zambia, Africa, he is best remembered for his



Parent's Day held extra significance for Wilkes College soccer veterans as the booters officially celebrated their 25th anniversary at Ralston Field.

Honored during halftime ceremonies of the Wilkes-Delaware Valley football game were members of a selected all-time team. Pictured on the field are, left to right, Tom Rokita, current soccer coach; John Reese, athletic director; and selectees Jim Ferris, Carl Havira, Dr. Francis J. Michelini, who presented the awards; Younsu Koo, Jim Kennedy, Bob Linaberry, and Chip Eaton.

long booming kicks. Ed was big and strong and was the 1969 senior Scholar-Athlete.

Bob Linaberry — also distinguished himself in the classroom as the 1973 senior scholar-athlete. His outstanding soccer traits included being a tireless, hard driving, and very aggressive competitor. He was a member of the 1971 All-MAC squad.

Jerry Yaremko — was noted for his steadiness and consistency. Jerry was considered as one of the surest Colonel kickers ever. He was named to the 1966 and 1967 All-MAC units.

Jim Kennedy — a key Colonel performer in the late 1960's, Jim was rated by his coaches as a tireless athlete with good offensive ability. He was versatile and very quick.

Jim Ferris — next to Joe Wiendl was Wilkes College's most celebrated athlete, gaining eleven letters in soccer, basketball, and baseball. As a member of early Colonel booter teams, Jim did everything well and played every position. He coached the soccer Colonels for nine seasons.

Joe Morgan — confined his talents mostly to the halfback position. Although small in size he drew the

respect of Colonel fans for his kicking ability.

Flip Jones — his arrival on the Wilkes scene signalled the start of a winning era for the Colonels. Phil, or Flip as he was known to teammates, had a great knowledge of the game.

Nick Giordano — despite his size he held every scoring record at one time and just barely missed making the Pan American squad. He drew praise for his ball-handling abilities for which he may have been the best.

Rich Beck — was a two-time All-MAC selection. He played exclusively on the outside and had good speed. Rich performed well with both feet.

Younsu Koo — was small but very strong. He spent two years at Wilkes before transferring to Swarthmore because of its engineering program. In his short time at the college he made his talents well known.

Carl Havira — a clutch player on Wilkes teams of the early 1960's. He was a versatile player who did everything well. He is best remembered for his clutch double-overtime goal against Bucknell in 1958.

Sports Chatter

by Paul Domowitch

The Hazlett System

"The Hazlett system" is something Coach Rollie Schmidt and his gridders aren't soon to forget. This system is going to be used this year in determining an MAC champion if Wilkes and Juniata end their respective seasons with a deadlock for the conference lead.

Here is a little rundown on how it works. It is based on the records of each team's MAC opponents at season's end. They add up the wins and losses of both Wilkes and Juniata's opponents, and then compare the overall records. Juniata has faced Albright, Susquehanna, Lycoming, Juniata, Maryland, and Delaware Valley. The only difference on both schedules is that Juniata has faced Albright, while Wilkes opposed Upsala instead.

Albright is about 5-3 in conference competition, and the Upsala team have yet to beat an MAC opponent. This difference in the two teams' schedules could spell doom for the Colonels, despite the ever-present fact that Wilkes has beaten Juniata.

The only other possibility for a Colonel title would be for Upsala to lose to Albright this weekend, which is something short of a miracle.

It seems almost unfair to a team that has proven it is championship material under a fine head coach. But if Delaware Valley doesn't beat Juniata this Saturday, the Colonels will be forced to settle for second place.

This is the last year the Hazlett system will be used in the MAC, but for Blue and Gold it could prove to be one year too late.

Grapplers Look Tough

Wilkes wrestling fans had the opportunity to see the Colonel grapplers in action last Friday evening in their scrimmage with Bucknell, and the turnout present was treated to some excellent wrestling by the Blue and Gold.

Especially impressive during the two-hour session were Rich Mahoney, the exciting, 118-pound freshman; Lonny Balum and Bart Mahon, the 126-pound candidates; Jeff McDonald, a prospective 177-pounder; and Tom Rapine, who is trying to qualify at 190.

No one would have recognized big Al Sharer, who must have lost at least 50 pounds and seems to be a lot quicker. Many people have been wondering whether the loss of weight has made him weaker, but Al feels much better in his present shape.

Arty Trovei injured his shoulder during a warm-up session at practice last week, but the X-rays proved negative and Arty should be ready to go soon, if he hasn't already. He didn't wrestle in the Bucknell scrimmage because his shoulder was still a little tender.

The Colonels have a rough opener, as they travel to Lehigh University's Grace Hall on December 1 to take on Lehigh in a dual meet. Grace Hall is known to everyone as the "snake pit" because of its small size, which intimidated a number of visiting opponents, but the Blue and Gold should have a large number of fans making the trip down. Coach Reese will have his grapplers ready to take on the first major obstacle in a very tough schedule.