

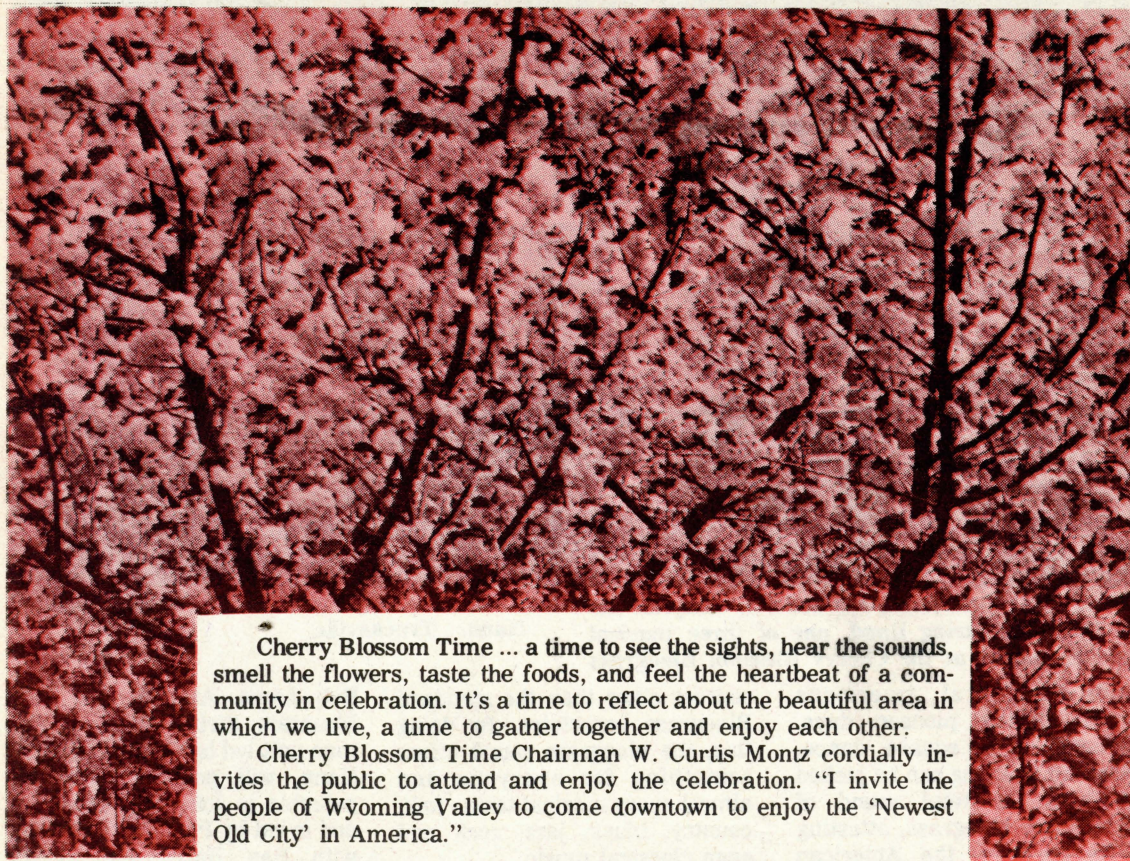
Cherry Blossom Times

Vol. 3, No. 1

Cherry Blossom Committee

Wilkes Barre Chamber of Commerce

April 21 - April 30, 1978



Cherry Blossom Time ... a time to see the sights, hear the sounds, smell the flowers, taste the foods, and feel the heartbeat of a community in celebration. It's a time to reflect about the beautiful area in which we live, a time to gather together and enjoy each other.

Cherry Blossom Time Chairman W. Curtis Montz cordially invites the public to attend and enjoy the celebration. "I invite the people of Wyoming Valley to come downtown to enjoy the 'Newest Old City' in America."

Blossom Celebration Now In 11th Year

Spring is in the air, when a young man's fancy turns to thoughts of love, and Wyoming Valley celebrates another Cherry Blossom Festival.

It all began in 1967, when representatives from the Greater Wilkes-Barre Chamber of Commerce approached the Luzerne County Commissioners with an idea which would show off the beautiful Wyoming Valley.

John Mattern headed a committee, composed of Roy Morgan and Atty. Mitchell Jenkins, who presented the idea of a Cherry Blossom Festival to County Commissioners. As Mattern put it, "We think we can eventually create a new image for our community...put a sparkle...put new life into it."

FIRST FESTIVAL IN 1968

Communities lining the river, from Pittston to Nanticoke, were encouraged to beautify the banks of the Susquehanna by planting lovely cherry trees. Numerous trees were planted, and the river's banks burst forth with new beauty. West Pittston joined in the planting and has its own yearly Cherry Blossom Festival. In 1968, the first festival was celebrated. It was an overwhelming success with participation from every corner of the valley.

People throughout the community enjoy the festivities, either as participants or spec-

tators. The cooperation of the colleges, schools, businesses in the Wyoming Valley Area has been outstanding since 1967. And today nearly every group, club and business in Wyoming Valley provides some type of support for the Gala Festival Weekend.

Mother Nature and the cherry trees sometimes forget they are supposed to be in bloom at festival time. The blossoms are very delicate and need the right combination of moisture and temperature to fully bloom. The Wyoming Valley Spring season is usually marked by fluctuations in temperature and moisture, thus the poor timing record of flowers and festival. Washington, D.C.



shares this same problem.

Washington, D.C. also celebrates a Cherry Blossom Festival, but with one notable difference, as its cherry trees are of the single blossom variety. Wyoming Valley's cherry trees are of the Kwansan or double blossom variety.

Valley Striders To Sponsor Annual Cross-Country Run

Get on your mark...get set...The Wyoming Valley Striders, in conjunction with the Cherry Blossom Committee of the Greater Wilkes-Barre Chamber of Commerce, will stage its fourth annual Cherry Blossom Time Run on Sunday, April 30.

The 5.1 mile road race, which begins and ends at the Luzerne County Courthouse parking lot, gets underway at 2 p.m. Tournament officials anticipate over 150 entries.

A record field of 90 runners participated in last year's event which was won by John Sinclair, a 21 year old senior at Mansfield State College. Sinclair set a new mark to beat with a clocking of 26:22, erasing the previous 27:13 standard which had been set the year before by Jim Lyons.

The course utilizes the Market Street Bridge, South River Street Dike, West River Street, Riverside Drive, and Pickering Street. The halfway point is the Martz parking lot on Pickering Street, where the runners will reverse direction.

Striding in last year's top five were Dan Thomas, Kingston; Louis Funderman, Ringtown; James Reilly, Wilkes-Barre; and Steve Orner, Mansfield. The first Cherry Blossom Run champion was Paul Boris, a former standout at GAR High School and Wilkes College.

Medals will be awarded to the top ten places with ribbons to be presented to everyone who competes in the run.

In only three years, the Wyoming Valley Striders have grown from a struggling club to one with a membership numbering over 115. Organized in June 1975 under the auspices of the Wilkes-Barre Recreation Board, the club maintains teams in road running, track and field, pentathlon, decathlon and cross

country.

Besides the Cherry Blossom Run, the Wyoming Valley Striders also host the Wyoming Valley 20-Kilometer Run, Men's Pentathlon, Women's Pentathlon, and the Cliff Robbins Memorial Cross Country Tour-

nament.

Current officers of the organization are George Pawlusch, president; Tom Driscoll, treasurer; Vince Wojnar, secretary and Rick Swoboda, Tim Specht and Dinny Noonan, directors.

April 22

Blossom Princess To Be Chosen

Here she comes ... Little Miss Cherry Blossom Princess. The Little Miss Cherry Blossom Princess Pageant held each year during Wilkes-Barre's Cherry Blossom Time will be held on Saturday, April 22, at one o'clock on Public Square. This event is open to all girls between 5-12 years of age by January 1, 1979. If it rains, the event will be held in the Wilkes College gym.

Mrs. Dorothy Mugford, director of the Miss Cherry Blossom Princess Pageant, and Miss Tracy Kurtinitis, last year's "Princess", are shown making plans for this year's pageant. Miss Kurtinitis won the crown last year when she performed an exciting baton twirling routine. Mrs. Mugford stated Miss Cherry Blossom Princess will be selected by a panel of judges from area schools and colleges, and judging will be done strictly on talent displayed. She emphasized it is not a beauty contest.

The Greater Wilkes-Barre Chamber of Commerce which sponsors Cherry Blossom Time is accepting entries to the Miss Cherry Blossom Princess Pageant. To enter a girl in the pageant, all one has to do is call the Wilkes-Barre Chamber of Commerce and register her name, address, telephone number, age and talent to be

displayed. Information about the Miss Cherry Blossom Princess Pageant will be sent to all who register.

Semi-final judging will took place Saturday, April 8 in the Community Room of Pomeroy's store in the Wyoming Valley Mall. Eight finalists will be chosen to appear in the Princess Pageant on Public Square on Saturday, April 22. One of these

finalists will be crowned Little Miss Cherry Blossom Princess, with the seven runners-up becoming Little Miss Blossoms.

The "Princess" will receive a crown, a basket of flowers, a \$50 wardrobe, and lunch for her and her parents in the Phoenix House Restaurant, all through the courtesy of Pomeroy's, Inc. who sponsor the Miss Cherry Blossom Princess Pageant.



IDEA CAME FROM WASHINGTON

The original idea to plant cherry trees occurred back in 1930 when John Nobel was elected city commissioner of Wilkes-Barre. Mr. Nobel traveled to Washington, D.C. to try and persuade the former Wilkes-Barre Parks Supervisor, a Mr. Seybold to return to Wilkes-Barre as parks supervisor. While in Washington, Mr. Nobel was impressed with the beauty of the cherry trees.

Nobel didn't return to Wilkes-Barre with Seybold, but he did return with the idea of planting cherry trees along the River Common between the courthouse and South Street. It is interesting to note that at the time, Nobel was criticized for the "wasteful" expenditure of public funds.

Most of the trees have survived two floods and additional cherry trees have been planted by various community organizations, most notably the Wyoming Valley Garden Club. In addition, other varieties have been added to the Common. Most of the trees have been identified and marked by the Luzerne County Agricultural Extension Service.

Today the cherry trees are over 49 years old and the Cherry Blossom Festival is in its eleventh year. As the cherry trees grow more beautiful each year, the Cherry Blossom Festival grows more impressive and exciting.

JCC To Sponsor Folk Sing-Along On Commons

Linda Silverman, Cantor of Temple Bnai Brith on Wyoming Avenue in Kingston will lead a sing-down of folk music on the River Common, across the street from the Jewish Community Center on Sunday, April 30 at 3 p.m. Free song sheets will be distributed to all who participate.

Mrs. Silverman, an accomplished guitarist will be assisted by Allan Greenberg, a Meyers High School senior. Mrs. Silverman earned her Bachelor of Science degree in Music Education at Wilkes College and furthered her education at Hebrew Union College, and Julliard School of Music, both in New York City.

Prior to obtaining her post in Kingston, she was Cantor at Temple Rodelph Shalom, in Philadelphia. She has a husband Jan and two children, Eryne and Jamie Michel.



Bluegrass Music Festival Scheduled As One Of Cherry Blossom Activities

Blue grass is back for the second year in the schedule of featured Cherry Blossom Time activities.

Three local groups have been booked to appear Saturday afternoon, April 29 as part of the 1978 Cherry Blossom Bluegrass Festival, which will take place on the North River Commons starting at 2 p.m.

Sponsors of the event are the Greater Wilkes-Barre Chamber of Commerce and Paul Lauer, director of the Luzerne County Tourist Promotion Agency and chairman of the Bluegrass Festival.

In addition to the scheduled groups, Bluegrass musicians are expected to attend and follow the pattern set last year when impromptu performances were heard whenever two or more musicians met.

Bluegrass is unique in today's world of music because it relies on unamplified acoustic instruments. The American string band music typically features the fiddle, five-string banjo, mandolin, acoustic guitar and acoustic bass. The blend of the instruments is enhanced by the addition of three part vocal harmony.

Bluegrass type of country music grew out of the string



Stranger, Chick, Herb, Joe and Pat comprise the Back Mountain String Band, one of three musical groups to appear at the Cherry Blossom Bluegrass

resuval. The group is led by Charles "Chick" Hann, Trucksville.

bands that rural Americans formed during pioneer days. Elements of a square dance, polka and Irish jug can be picked out from the total sound of modern day bluegrass, attesting to its heritage, the American melting pot.

Today, Bluegrass bands perform material drawn from many

sources other than the standard Bluegrass repertoire. In doing this, the bluegrass sound offers something for everyone and almost every musical taste - folk, country, blues, jazz, rock and even classical music.

Saturday's performances will start at 2 p.m. with the Country Cussins, a four piece group led by

Bob Jones. At 3:30, the Back Mountain String Band, a five man unit led by Charles "Chick" Hann, will perform. New Appalachia is scheduled at 5 p.m. and is led by Paul Zbiek on bass, with Ray Harclerode on the banjo, Dave Cohut on the fiddle and Rob Bulkly on guitar.

Rafts To Race Down River In Ninth Annual Regatta

The Ninth Annual Wyoming Valley River Regatta floats down the Susquehanna River on Sunday, April 30. The raft race, sponsored by the Stegmaier Division of the Lion Inc. and the Business Administration Club of King's College, has become a tradition at the Cherry Blossom Festival.

The River Regatta began in the spring of 1970, when the local Cherry Blossom Festival Committee was laying plans for the events that year. The big question was how to attract people to the River Common for the celebration.

At King's College, the Business Administration Club and its former moderator Carmen Mauriello submitted plans for a raft race down the Susquehanna River from the Pittston area to



Last year's winning entry in the Mark Twain Division — The crew of Gary Lawrence, Barry Winkler, Bruce Kern and Ken Winkler navigated the course in one hour and 31 minutes.

Nesbitt Park. It proved to be quite an attraction for the Cherry

Blossom Festival, as an estimated 10,000 watched the race.

Racers navigate a seven-mile stretch of the Susquehanna River between the Fort Jenkins Bridge in Pittston to the Market Street Bridge in Wilkes-Barre. The race demonstrates navigational skills and competitive spirit on the part of the participants. Rafts representing schools, clubs, organizations, fraternities, faculties as well as independently sponsored groups are entered.

The competition proves to be great fun for the participants as well as the thousands of spectators who crowd the banks of the river to cheer for their favorite crew.

Starting time for the Mark Twain division is 1 p.m., the Modified Division starts at 1:30 p.m. Trophies will be awarded to the first three finishers in each division. In addition, there will be an award for the "Most Attractive Raft."

Wilkes Junior Presents Voice Recital April 28

The Music Department of Wilkes College will present Kathleen Herpich in a voice recital, April 28 at 8:30 p.m. in the Gies Recital Hall of the Dorothy Dickson Darte Hall.

The recital will include arias by Handel, German lieder, French art songs, arias from "The Marriage of Figaro" by Mozart, "Gitanjali," a song cycle by John Alden Carpenter; and songs by Victor Hely-Hutchinson, Roger Quilter and Sidney Homer.

Miss Herpich will be accompanied by James Ruck at the piano.

The recital is open to the public. There is no admission charge.



Kathleen Herpich

Bandshell Performances

South River Common

Sat., April 22

North River Common

Sun., April 23

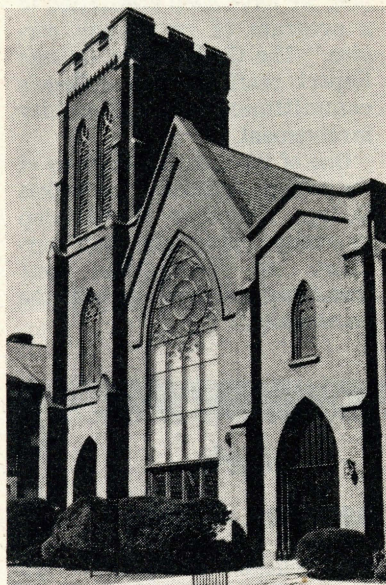
Opening Ceremony

Friday, April 21

2 p.m.

North River Commons

Osterhout Features 'Information Fair'



also to youngsters ages 1 to 18.

Each organization will have a display and a representative on hand to answer questions and play to have demonstrations and a variety of materials to hand out.

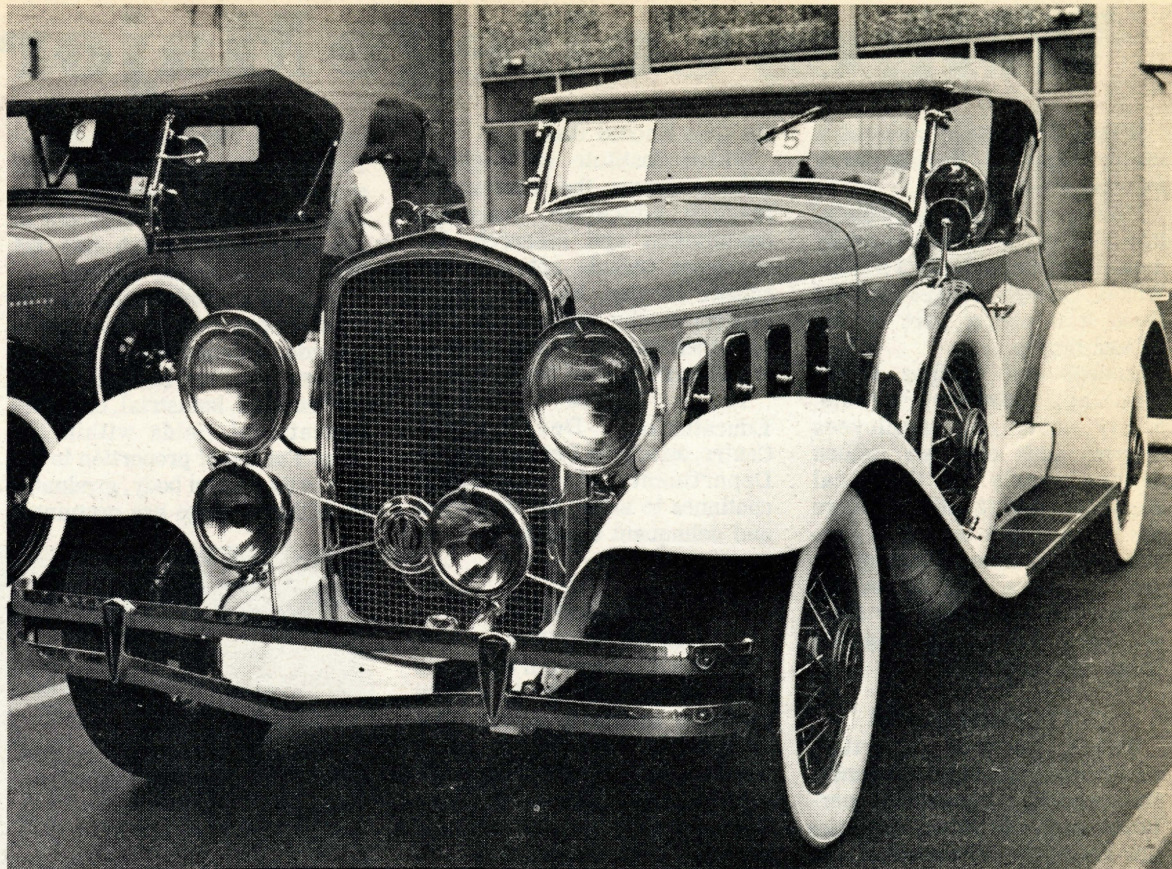
The Osterhout Free Library will have a booth that will help to explain the Summer Reading Club programs at the Osterhout and Branches as well as at the District Libraries throughout Luzerne County.

Among the other organizations participating will be the Children's Museum of Northeastern Pennsylvania, the Penn State University Cooperative Extension Service 4H Advisors, the Back Mountain Cultural Center, Red Cross, Boy Scouts of America, the Penns Woods Council of the Girl Scouts of America, the Metropolitan Lutheran Council, and College for Kids.

WILK Radio will be broadcasting live from the Information Fair. Everyone is invited to come and find out what a wealth of fun will be planned for youngsters of all ages right here in Wyoming Valley for the summer.

Osterhout Free Library will sponsor an outdoor "Information Fair" on the lawn beside the Library on Saturday, April 29. The Fair will open at 10 a.m. and continue until 3 p.m.

Displays will be set up by various non-profit agencies which will offer summer recreational and educational opportunities so that information will be available to parents and



"They don't make them like they used to." Some of the truly magnificent automobiles from much earlier days will be displayed at the Main Office Customer Parking Lot of First Eastern Bank, 11 West Market Street, on Sunday, April 30, from 1 to 5 p.m.

At Cherry Blossom Time, each year the bank hosts members of the Northeastern Pennsylvania Chapter, Antique Automobile Club of America. The

traditional event is one of the highlights of the festival.

Visitors to the Antique Car Exhibit will have an opportunity to vote for their favorite car, the one that they would most like to own. First, second and third place prizes will be awarded, based on results of the voting.

First Eastern Bank sponsors the yearly event that takes people of all ages back into time.

Fun And Games

Kick-off the Cherry Blossom Festival with fun and games at the Cherry Blossom Games, Friday, April 21 at 3 p.m., on the South River Commons.

Teams will compete in 10 events for cash prizes. In addition to the \$50 first prize, \$25 second prize and \$10 third prize, the winning team in each event will receive an award.

The 10 events include the egg toss, tug-o-war, balloon sitting, bat run, eating contest, six-in-a-sack, sack races; pyramid building, 3-legged race, log carry, and piggy back race.

Any teams of six, three girls and three guys, can enter. No entrance fee.

The Cherry Blossom Softball Tournament begins April 21 at 6 p.m. at Kirby Park. The single-elimination tournament will feature three-inning games.

Any team of 10, five girls and five guys, can compete for the \$50 first prize, \$30 second prize, \$20 third prize and \$10 fourth prize. No entrance fee.

Ellen duFosse, chairman of the Wilkes College Cherry Blossom activities, invites the public to join in the fun.

Applications to both the Cherry Blossom Games and the Cherry Blossom Softball Tournament may be picked up at the Wilkes College Bookstore, and must be returned to the bookstore by April 19. Join in the fun by participating or watching.

'Christ The King' Sculpture Has Prominent Position In W-B Skyline

Strolling along the North River Commons one can observe the beautiful statue of "Christ the King" atop the Main Building of King's College. Formal dedication and blessing of the 24-foot statue of the College Patron took place October 28, 1956, the Feast of Christ the King. The statue is cast in one-half inch aluminum and is beautifully lighted at night, making it visible to many sections of Wyoming Valley.

Occupying a prominent place in the Wilkes-Barre skyline, King's statue faces west overlooking the beautiful Wyoming Valley and the historic Susquehanna River. From a distant view, the edifice gives the

appearance of a huge cross by day and by night.

Originally, the idea of a statue for the top of the six-story Main Building was conceived by the Rev. Leo F. Flood, C.S.C., former president of King's College. Father Flood presented his idea to the Alumni Association of the college. The graduates enthusiastically adopted the project of financing erection of the statue.

From the general alumni office at King's, the drive for funds was held and met with a fine response from the graduates. Many friends of the college also donated to the statue fund.

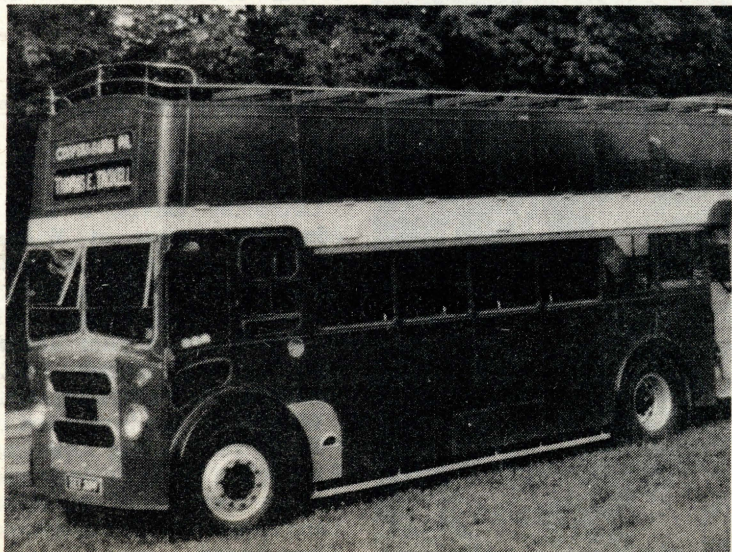
Adolph Ell, Jr., instructor in art at King's, designed the

original model for the statue. After a careful study of proposals submitted, the contract for the statue was awarded to Lawrence Russo of neighboring Kingston. Mr. Russo, prominent in the field of sculpture, had a brilliant background of outstanding artistic projects in the East.

After completing the huge figure of "Christ the King" in clay, Mr. Russo made a plaster of paris casting. Then the statue was cast in aluminum sections.

The sections were welded together on the rooftop of the Main Building where the statue was reinforced with steel framework. Spotlights were installed to light the statue at night.

Double Decker Bus To Tour Activities On Saturdays



Tour through Cherry Blossom Festival Land on a Double Deck Tour Bus, courtesy of Olin's Jewelry Inc., on Saturdays, April 22 and 29, noon to 5 p.m.

The Double Deck Tour Bus will

cruise through the entire festival, transporting passengers free of charge. While enjoying the sights and sounds at this year's Cherry Blossom Festival...enjoy the ride.



—Something For Everyone—

Wilkes College Major Asset To Area

Wilkes College continues as a major asset to Northeastern Pennsylvania.

Millions of dollars are poured into the Wilkes-Barre community annually through the \$8.5 million Wilkes College budget and by those who are a part of the college family.

Student and campus visitor spending, maintenance costs, utility costs and employees salaries adds over six million dollars yearly to the local economy. Over 12 million dollars has been spent on new construction on campus during the past 12 years, and 10 million dollars has been spent for flood recovery work following the tragic storm in 1972

CULTURE ABOUNDS

Wilkes cultural activities enrich and entertain thousands. Outstanding concerts, performances, and other activities are regularly scheduled in the Dorothy Dickson Darte Center for the Performing Arts and at the Wilkes College Gymnasium.

The Wilkes Concert and Lecture Series, open to the public, attracts major artists and lecturers seven to nine times a year. Community attendance is approximately 5000. The Wilkes College Theater has at least four major offerings a year and off-campus attendance is estimated at 3500.

The Conyngham Gallery features special exhibitions of student arts, while the Sordoni Art Gallery displays works by professional artists. Yearly entertainment is also offered by the college band, chorus, Madrigal Singers and recitals in

the Gies Recital Hall.

Wilkes Institute of Regional Affairs serves the community through education, training, consultation and research. Its resources include not only the college faculty, but also those experts in the region who can lend their talents to the solution of various regional problems.

The Wilkes College Educational Development Center, an arm of Pennsylvania's Department of Education, continues to assist the neglected and delinquent student.

SUCCESSFUL SPORTS STORY

Wilkes College participates fully and successfully in a wide range of spectator sports. The college has won two Lambert trophies, indicative of supremacy among small colleges in the East. Wilkes has won its national division championship in wrestling, and hosts the "Rose Bowl of Wrestling," an open tournament during the Christmas holidays, which attracts some of the best wrestlers in the nation.

Soccer and lacrosse provide area youngsters with one of a few places where these rapidly growing sports can be viewed. The college maintains varsity teams in 16 major sports with six for women students. Year-round there are sports for community spectators in the Wyoming Valley.

The Evening College Division offers a multitude of educational opportunities to men and women of the community who cannot attend day classes. Recognizing the problems of the working individual, Wilkes recently

initiated a "Week-end College." The program will make available special courses to meet the needs and interests of that segment of the community which has not been able to attend college.

No greater contribution can be made to any community than to provide outstanding men and women who are leaders in the professional, industrial, civic and educational fields within the area. Far out of proportion to the size of its alumni body, graduates of Wilkes College are prominent

in the Wyoming Valley not only as professional and industrial leaders but also as outstanding volunteers who serve as board members and participants in the affairs of hospitals, churches, synagogues, service organizations, school boards, and all other types of community and public service.

COMMITTED TO COMMUNITY

Dr. Eugene S. Farley, the first president of Wilkes College ob-

served, "From the very beginning we have been committed to a program of community service." The Goals of the College Report reaffirms the college's commitment of community involvement.

One of the specific missions of the college outlined in the Wilkes College report is to "develop innovative programs and services to strengthen our traditional partnership with the community."

Stark Learning Center

Wilkes College's Stark Learning Center. The public is invited to attend tours of the Center, Saturday, April 22 and Sunday, April 23 from 1 to 6 p.m.



Holy Cross Fathers Founders Of King's

Responding to a request from the Bishop of the Diocese of Scranton in 1946, the Holy Cross Fathers came from the University of Notre Dame to Wyoming Valley to establish King's College.

Heading the original group of priests was the Rev. James Connerton, C.S.C., native of Binghamton, New York.

The second president of the college was the late Rev. John Lane, C.S.C., followed by Rev. Leo Flood, C.S.C., Rev. George Benaglia, C.S.C. and Rev. Lane D. Kilburn, C.S.C.

In 1974, the Rev. Charles D. Sherrer, C.S.C., native of Marion, Ohio, became the sixth president

of King's College.

Under the guidance of the Holy Cross Fathers, King's became an independent, self-governing institution empowered to grant the degrees of Bachelor of Arts and Bachelor of Science.

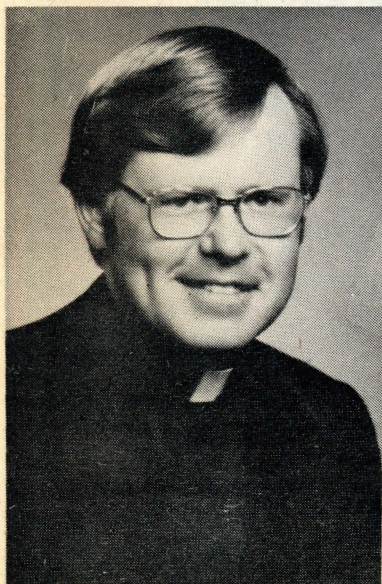
Founded as a college for men, King's opened its doors to the first co-educational class in 1970 and enrollment of women has been on the increase each year.

The Congregation of Holy Cross was organized in the French town of Sainte Croix (Holy Cross) by Father Basil Antoine Moreau in 1837. The Congregation established the University of Notre Dame in South Bend, Indiana, known far and wide as the "Fightin' Irish."

Twenty-seven secondary schools are conducted by the order in this country, along with colleges and schools in other parts of the world.

The Catholic tradition has been important in the origins and historical development of King's College. It continues to offer an optimistic view of man, his world, and his history and provides a context for the college's educational mission.

King's also welcomes the influence of all religious and cultural traditions, is committed to ecumenical collaboration, and prizes academic freedom among its faculty and students, who have always represented many ethnic and racial groups and religious creeds.



Rev. Charles D. Sherrer, C.S.C.

Battle Of Wyoming On Exhibit In Historical Society Museum

"Celebraiton: The Battle of Wyoming and its Commemoration, 1778-1778" an exhibit in the Wyoming Historical and Geological Society Museum, 69 South Franklin Street, will open to the public on April 29 and 30.

The exhibit is the Historical Society's contribution to the annual Cherry Blossom Time observance and it is also intended to promote interest in the 200th anniversary of the Revolutionary War battle which took place July 3, 1778.

A wide variety of objects associated with the Battle and with the Centennial and Sesquicentennial observances will be on display. On display will be the Libation Cup, from which American troops took refreshment before the battle; the powder horn of Gershom Prince, a black soldier who fought in the battle; and the Capitulation Table, on which American Col. Nathan Denison and British Col. John Butler signed the terms of capitulation intended to insure the safety of American lives and private property after the battle.

The exhibit will also include photographs of the ceremonies in 1878 in which President

Rutherford B. Hayes took part and those of 1928, to which President Calvin Coolidge sent a special delegation. Souvenir programs, flags, swords and other memorabilia will also be on



display.

Museum hours for the weekend of April 29 will be 10 a.m. to 4 p.m. on Saturday and 1 to 4 p.m. on Sunday. Regular museum hours

are Wednesday and Friday from 1 to 4 p.m. and Saturday from 10 to 4 p.m. Admission is free.

Alison Miller, a Wilkes College student intern at the Wyoming Historical and Geological Society, holds the powder horn of Gershom Prince. The horn, will be part of a new exhibit at the Historical Society.

Catherine Davis In Piano Recital

Catherine Davis, a music education major at Wilkes College, will present a piano recital on the first day of Cherry Blossom Festival, Friday, April 21 at 8:30 p.m. in Gies Recital Hall, Dorothy Dickson Darte Center for the Performing Arts.

Miss Davis, has been listed in "Who's Who" among American High School Music Students and was a recipient of the Sousa Band Award and the Paderwesi Piano Award.

The program will feature selections from compositions by Handel, Mozart, Chopin, and others.

The public is welcome, free of charge.

Kennel Club To Hold Annual Dog Show

The Back Mountain Kennel Club will sponsor its annual AKC-sanctioned match on April 29 in conjunction with the Wilkes-Barre Cherry Blossom Festival. The match, a dog show where no credit is earned towards American Kennel Club titles, will be held at Ralston Field behind the 109th Armory.

Registration will begin at 9:30 a.m. Saturday, with judging in obedience scheduled for noon. Immediately preceding breed judging will be the Parade of Champions, an exciting display of AKC's finest, both in conformation and obedience.

In obedience, all classes recognized by the AKC (sub-novice, novice, graduate novice, open and utility) will be offered.

All dogs eligible for AKC registration may enter this match. Each dog entered for breed competition is judged against the standard of the breed and against other dogs of the same group and sex. Then all the winners of each class in the breed compete for the award, "Best of Breed."

All Best of Breed winners then compete against each other in the six AKC recognized groups, sporting, hound, working, terrier, toy and non-sporting. The six first place winners from each group are then judged for the "Best in Match" ribbon and trophy.



Puppies and adults are not judged against each other, a "Best Puppy" and a "Best Adult" are selected.

Also represented will be dogs in the miscellaneous breeds listed by AKC. These dogs are not usually seen, but are pure-bred in accordance with AKC standards.

A match is a learning ex-

perience for the amateur dog lover as well as the old hand with new puppies. A novice exhibitor can learn the etiquette and rules of the show ring, as well as the level of training necessary to compete at an obedience trial. The entry fee is low. Mrs. F.M. Javer of Harveys Lake is the match chairman.



Follow the yellow brick road to Wilkes-Barre's Public Square as the Children's Theatre of Luzerne County Community College bring Dorothy and her friends from the land of Oz to the Cherry Blossom Festival.

Saturday, April 22 at 2 p.m., the LCCC cast will present "The Wizard of Oz," a one-act audience play directed by John Pisaneschi, Mountaintop, director of drama at LCCC.

Shown rehearsing a scene from the play are, from left, Michelle Sipler, Wilkes-Barre, Good Fairy; Mary Constantine, Nanticoke, Scarecrow; Maryann Oley, Hudson, Dorothy; and Ron Polemchak, Plymouth, the Wizard.

Cherry Blossom FIREWORKS Display

Sat., April 22
Nesbitt Park at dusk

Former Train Station Is Vibrant C.P.A.

Once a plot of land bearing a thriving railroad station in the late 1800's, now is a vibrant center for the performing arts. Committed to educational theater, the Dorothy Dickson Darte Center for the Performing Arts was the fulfillment of a dream.

Now 14 years after its completion, the CPA maintains its commitment to Wilkes College and the community at large. Over 50,000 people attended performances, films, lectures, meetings, rehearsals, and concerts at the CPA. More than 250 Wilkes students participated in the production of those events.

The CPA additionally is a cultural facility which hosts more than 50 campus and community organizations. Indeed, the spirits

of education, imagination and creativity live in abundance in such a "house."

The late Annette Evans, the trustee instrumental in the construction of the CPA, said it is "a place to turn what man dreams into an expression of what he will become." Her words underscore the essence of educational theater.

One need only to experience the panoramic view from the lighting control booth to the rear and above the 500-seat auditorium on an opening night before a capacity house to understand the grasp of creativity in the performing arts. Students, as actors on stage, create illusions and transform illusions into beliefs for the audience.

Wilkes educational efforts have

offered remarkable experiences for students participating in the theatre. Their experiences include experimental theatre performances, where the essence of drama unfolds; modern dance classes, where they learn the physical discipline of the body in an effort of expression.

The classroom, where they might study the rebirth of theatre in the Italian Renaissance, tracing the roots of modern stage

design.

Scene and costume shops offer students opportunities to translate designing plans into a stage environment. Wilkes students may paint the backdrops for a high school musical, build sets for community theatre production, prepare a puppet show for a local elementary school or direct high school students entered in a one-act play competition.

The solitary student, seated in the reading room at the CPA, is moved by the performing spirit.

Fourteen years since the ground breaking has found the Dorothy Dickson Darte Center for the Performing Arts at Wilkes College, turning dreams into eloquent performances, visions into fulfilled students and hopes into a joint commitment to the perpetuation of the arts.

Richard D. Strobel, Editor

Contributors:

Jane Manganella
Doris Mallin
Sheila Adams
Marianne Mebane
Ellie Rodda
Cheryl Javer
Jean Winnie
Peg Anderson
Dorothy Baker
Ellen duFosse'

Rev. Ted Swertz
Bob Heim
Carl Ruschel
Bob Howes
Sy Heffer
Alfred Groh
Paul Lauer
David Frey
John Engle
Chris Shaw

Rich Strobel is a member of the Wilkes College Public Relations Department.

The Cherry Blossom Times is published under the auspices of the Wilkes College Public Relations Department in cooperation with members of the Wilkes campus newspaper, The Beacon.

The Cherry Blossom Times was printed at the Sunday Dispatch, Pittston.



Something For Everyone

Local Artists Featured In Festival Displays

Casilli To Show Clay-Metal Work In Wilkes Sordoni Art Gallery

"Fragments", an exhibition in clay and metal by Henry Casilli, will be featured at the Wilkes College Sordoni Art Gallery, April 21, 22 and 23 from 10 a.m. to

6 p.m. daily.

The exhibition was inspired by the artist's observations of man's

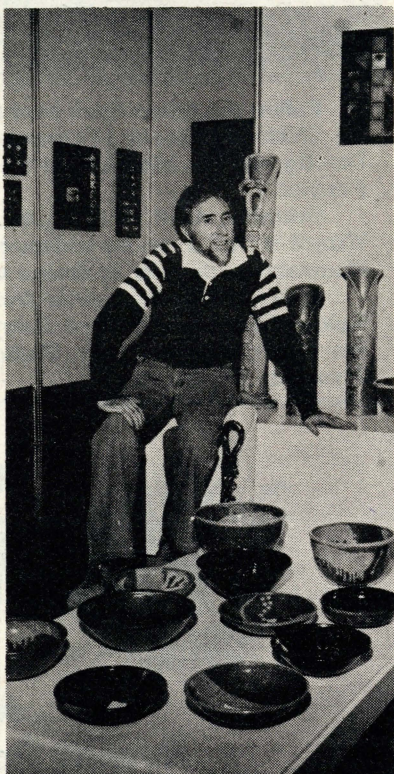
activities in the industrial world. The ceramics in the show came from industrial materials originally designed for the job of holding and protecting objects during shipping.

Casilli, assistant professor in the Fine Arts Department at Wilkes, graduated with a BS from Edinboro State University and received an MA in Studio Art from Pennsylvania State University. He did his graduate studies in ceramics and sculpture at Carnegie-Mellon University.

The local artist has been the Regional Coordinator for the Northeastern Pennsylvania Scholastic Art Awards since 1975, and served as a National Advisory Committee member in 1977.

Casilli, listed in "Who's Who in American Art", has exhibited his work in Carnegie Museum, Chautauqua National, New York; Pennridge National; Upstairs Gallery Arts and Crafts Center, Pittsburgh; Bucknell University and the Fine Arts Fiesta in Wilkes-Barre.

The public is cordially invited by Wilkes College to tour the Gallery during the Cherry Blossom weekend.



Henry Casilli

Concert To Benefit Multiple Sclerosis

Abilene will be featured in concert, along with Stagecoach, for the benefit of the Multiple Sclerosis Society, on Sunday, April 30. The concert, sponsored by the Wilkes College Circle K Club, will be at the Wilkes College Gym, 8:00 to midnight. Admission is \$3.00.

Circle K International is a college student's action organization sponsored by Kiwanis International. The members relate to campus, community and their fellow man in much the same way as does the sponsoring organization in the communities it services.

Currently there are over 10,000 members in over 700 clubs on college campuses throughout the United States and Canada. Wilkes College Circle K Club advisor is George Pawlusch.

National Contest Winners Featured In First Eastern Bank Display

Winning entries in the Eberhard Faber National Art Scholarship Contest will be exhibited in the Main Office Lobby annex of First Eastern Bank, 11 West Market Street, from Monday, April 24 through Sunday, April 30, between the hours of 9 a.m. and 5 p.m. daily.

One hundred and twenty-seven college and university art classes participated in the program during the Fall of 1974. Entrants from accredited participating art schools throughout the country submitted one marker painting each, using a minimum of four of the company's Design Art Markers. Students were allowed to use any subject matter except posters, and the finished works were judged on technique, rather than subject matter.

The top three winning paintings from each class were forwarded to Wilkes-Barre, then sent to New York City where judging panel of three experts selected the winners. The panel of judges consisted of Tony Ruta, Times, Inc.; Wes Shaw, J. Walter Thompson Agency, and Stan Stellar, Art Direction magazine. The presentation of top scholarship awards was made at a banquet held at the Hotel Hilton at Rockefeller Center.



In 1975, First Eastern Bank had the honor of hosting the very first exhibition of winning entries in the Eberhard Faber National Art Scholarship Contest. Pictured with a small sampling of paintings done with the firm's Design Art Markers are, left to right: Frear H. Scovell, First Eastern's executive vice president; Eberhard Faber, chairman of the board of the firm that sponsored the contest, and Richard M. Ross, Jr., the bank's president. After three years of being exhibited nationally, the paintings were returned to Eberhard Faber's home office at Mountaintop, and will once again be exhibited at First Eastern Bank—this time in conjunction with Cherry Blossom Time.



Two Seniors Will Exhibit In Wilkes College Gallery

Reginald Fatherly and Val Kaplan, two fine arts majors at Wilkes College, will offer a combined exhibit at the Conyngham Gallery beginning with an opening reception on Sunday, April 23, at 8 p.m. and continuing until Friday April 28.

Hours for the show are Monday and Wednesday, 11 a.m. to 4 p.m.; Tuesday and Thursday, 11 a.m. to 1 p.m., and on weekends, Saturday and Sunday, from 10 a.m. to 8 p.m.

Fatherly, a native of Norfolk, Virginia was a member of Wilkes Wrestling team for two years and the Wilkes College Lacrosse team last year. He is presently a senior at the college.

Kaplan, a Philadelphian, was manager of the Wrestling team for four years. He too, is a senior at Wilkes.

The exhibit will include prints, sculpture, watercolors, batiks, abstract ceramics, and drawings.

The public is cordially invited to see the show during the Cherry Blossom Festival.

In Wyoming National Bank Local Artist Holds Exhibit

The Wyoming National Bank currently has original paintings by local artist Oscar Jones on display in the lobby of its Wilkes-Barre office, Franklin and West Market Streets.

Mr. Jones, former proprietor of Wilkes-Barre's Art Shop, studied art at Wilkes College, and under Niccolo Cortiglia, a local artist well-known for his portraits. Jones displays many of his paintings in the Wyoming Valley Art League, and the Hazleton Art League where he won a still life award. He paints mainly with oils.

Dorothy Baker, director of public relations at the bank, cordially invited the public to visit the display during Cherry Blossom Week. "Wyoming National Bank has cooperated with and has been interested in the festival since its inception," she added.

The display is open to the public during regular banking hours; 9 a.m. to 4 p.m. Monday through Thursday and 9 a.m. to 5 p.m. on Friday.

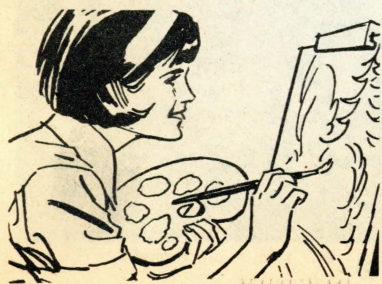
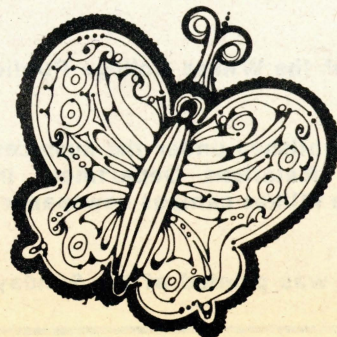
The bank hopes to maintain this policy of providing outstanding art displays throughout the year.

LCCC Plans Art Exhibit In Sterling

The Art Department of Luzerne County Community College will present its 11th annual exhibit of art and photography in the main lobby of the Hotel Sterling from April 19 through April 26.

Held in conjunction with the Cherry Blossom Festival in Wilkes-Barre, the exhibit will open with a reception in the Sterling's Crystal Ballroom at 8 p.m. on April 19.

Exhibited around the clock will be approximately 300 pieces of art representing a wide range of artistic endeavors by students of Luzerne County Community College. Included will be examples of lettering and layout, drawing, illustration, graphic design, portraiture, paintings done in oil, water color, acrylic and mixed media, and photography.



Airplanes Demonstrated



Wouldn't you like to fly ... my beautiful model airplane ... way up in the sky, or better yet, learn how to make and fly your own model airplane. Join the Wyoming Valley Model Airplane Club. Pictured preparing a plane for flight are, from left, Bill Frew, Curtis James and Carl Ruschel.

Model airplanes, flying at speeds up to 140 miles per hour, performing horizontal and vertical figure eights and win over maneuvers, these are only a few of the sights you will see as the Wyoming Valley Model Airplane Club demonstrates their line-control airplanes, Sunday, April 30 at 1 p.m. at Kirby Park.

Model airplane enthusiasts can examine the planes and equipment, and learn about the time required to build a model from balsa wood. They can also learn about the covering and painting of a model before it can be flown, as club members will be available during the day.

The Wyoming Valley Model Airplane Club is chartered by the Academy of Model Aeronautics in Washington, D.C. Club members are principally involved in building and flying their models, but they are also available to speak to organizations about their hobby. Members may be reached through the Clubs and Organizations List located at the Osterhout Free Library.

Club members include John Glatz, president; John Glatz, Jr., Hal Glatz, Carl Ruschel, vice president; Carl Ruschel, Jr., Bill Frew, treasurer; Greg Sheplock, Chris Peterson, secretary; Jim Bonita and Curtis James.

Golf Tourney At W-B Club

Cherry Blossom Golf Tournament, which is held annually in conjunction with the area celebration of Cherry Blossom Time, will be held Saturday and Sunday, April 22 and 23, at the Wilkes-Barre Club at Trailwood.

Men, women and children can compete. The event is open to all golfers in the region.

The tournament consists of one round of golf, played on either day, in which the Calloway System of scoring will be used. The Calloway is a handicap system.

Those wishing to participate are asked to register at the pro shop. Trophies and prizes will be awarded.

Ruggerfest Tournament Slated

The Third Annual Cherry Blossom Ruggerfest, Saturday, April 29, a date to remember if you are interested in seeing some very exciting, quite uncommon and thoroughly brutal sporting competition.

The ruggerfest is an invitational rugby football tournament

hosted each year at Cherry Blossom Time by the gentlemen of the Wilkes-Barre Rugby Football Club.

This years tournament is the most ambitious yet attempted by the local club. The tournament schedule calls for an eight team double elimination tournament,

which will be played in Kirby Park. Each participating team will play at least two games on tournament day. The two teams that emerge victorious from both elimination games will face each other in a third and final game for the first place trophy.

The action will begin with an 11:00 a.m. kickoff for the first elimination round. The final trophy game kickoff will be about 4:30 p.m. Even if your interest in sports is casual, not one moment of this tournament promises to be anything less than exciting.

The teams participating in this years action include the newly formed Scranton Rugby Club. The Scranton ruggers are participating in their first full season of independent competition. They, along with the Middletown Hibernians RFC, the Harrisburg Barbarians RFC, Blackthorn Irish RFC, Susquehanna University RFC, and Buffalo Valley RFC will be hosted by the Wilkes-Barre club.

NEW START

In every department of life perseverance is just a constant succession of new beginnings.

Pictured are members of the YWCA's Gymnastics Teams, bottom row, from left, Veronica Repko, Dallas; Amy Storz, Shavertown; Laura Macaravage, Plains; and Lisa Sunday, Wilkes-Barre.

Middle row, Sharon Serafin, Plymouth; Diane Emmert, Wilkes-Barre; Patrice Holup, Luzerne; and Kathy Ulitchney, Wilkes-Barre.

Top row, Karen Cackowski, Wilkes-Barre; Marie Michalek, Kingston; and Susan Reilly, Wilkes-Barre.

YWCA Gymnastic Practices Open To Public Saturdays

The Wilkes-Barre YWCA's Gymnastic Teams will be rehearsing for their final championship meets during the time of the Cherry Blossom Festival.

The girls perform four olympic events in competition, balance beam, floor exercise, women's vault and uneven parallel bars. Each event requires the utmost concentration and skill.

Interest in the growing sport is

reflected by the girls attending YWCA gymnastics classes. Their ages range from 2-years-old to 22.

Whether watching olympic competition or our own future Nadias, gymnastics are a crowd pleaser. They are exciting and beautiful events.

The public is welcome to watch classes and rehearsals, which will be at all levels of proficiency, from 11 a.m. to 3 p.m., on Saturdays, April 22 and 29.



Cindy Rothrock Wins Karate Championship

The Sixth Annual Cherry Blossom Karate Tournament, sponsored by Sembach Karate and Self Defense School, took place April 9, at Wilkes-Barre's YMCA. The tournament is one of the larger martial arts tournaments held in Pennsylvania.

Cindy Rothrock, teacher at the Shaolin School, downtown Wilkes-Barre, won first place in Advanced Self-defense, and Weapons Division. She finished second in Men's Black Belt Form, while students of the Shaolin School where she teaches won 17 trophies in all phases of competition.

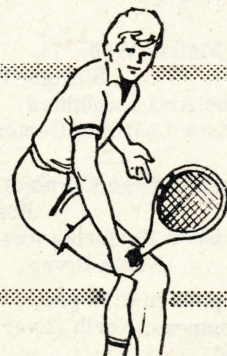
Cindy is rated Top Form Competitor on the East Coast for the past seven months by Karate Illustrated, a national martial arts magazine.

The Shaolin School teaches Northern Shaolin Kung-Fu under the direction of Sifu Ernest Rothrock. Sifu Rothrock has been training over ten years from Grandmaster Daniel K. Pai, grandmaster of White Dragon Kung-Fu.

Kung-Fu is a self-defense system as well as a health program. "Exercise is one purpose of Kung-Fu Training, this was the reason it was developed by the priests in the Shaolin Monastery, China," disclosed Sifu Rothrock.

Mental and physical aspects are developed equally during Kung-Fu training. The Shaolin School in Wilkes-Barre, has been open to students for three years.

Tennis Anyone?



The Fifth Annual Cherry Blossom Tennis Tournament, sponsored by the Wilkes-Barre Recreation Board, begins May 6 and runs through May 14 at the Kirby Park Tennis Courts.

Defending champions are: men's singles, Charles Parkhurst, Trucksville; women's singles, Lorraine Sharp, Freeland; men's doubles, Bill

Ziegler, Mountaintop and Joe Wallace, Wilkes-Barre; women's doubles, Mary Lou MacFarland, Kingston and Lorraine Sharp; mixed doubles, John Russel, Wilkes-Barre and Lorraine Sharp.

Tournament information may be obtained by contacting the Wilkes-Barre Recreation Board.

Cherry Blossom Calendar

FRIDAY, APRIL 21

2:00 p.m., Opening Ceremonies, North River Commons
 3:00 p.m., Cherry Blossom Games,
 South River Commons
 6:00 p.m., Softball Tournament, Kirby Park
 8:30 p.m., Piano Recital by Catherine Davies,
 Gies Recital Hall, Dorothy Dickson
 Dart Center for the Performing Arts
 Student Art Exhibit by Margaret Hreha and Gary Fritzes
 Conyngham Art Gallery, Wilkes College

THURSDAY, APRIL 23

10:00 a.m. to 6:00 p.m., "Fragments,"
 An Exhibition in Clay and Metal
 by Henry Casilli, Sordoni Art Gallery, Wilkes College

APRIL 19 — 26

LCCC Art Exhibit, Sterling Inn Towne Lobby
 Public Reception, April 19, 8:00 p.m.
 Crystal Ball Room

APRIL 21 — 30

Student Art Exhibit, Kilburn Room,
 Sheehy Student Center, King's College

SATURDAY, APRIL 22

10:00 a.m. to 6:00 p.m., Fine Arts Exhibition and Demonstrations
 Stark Learning Center Courtyard,
 Wilkes College
 11:00 a.m. to 3:00 p.m., YWCA Gymnastics Team Rehearsal, YWCA
 12 noon to 5:00 p.m. - Double Deck Tour Bus Rides

Wilkes College Carnival,
 South River Commons



1:00 p.m. to 6:00 p.m.
 Tours of Wilkes College's Stark Learning Center
 Bandshell Performances, South River Commons
 Rain sight, Wilkes College Gym
 8:30 p.m. - Piano Recital by Leslie J. Kirstein and
 Maureen M. Rincavage, Dorothy Dickson Dart Center
 for the Performing Arts

PUBLIC SQUARE

Rain Sight, Wilkes-Barre Center Courtyard
 1:00 p.m., Little Miss Cherry Blossom Pageant
 2:00 p.m., The Wizard of Oz,
 Children's Theater Production
 2:30 p.m., Bobbi Warren Dancers
 From Barbara Ann Woronko Dance Studio
 3:00 p.m., Wilkes-Barre Ballet Theatre



DUSK — Fireworks Display at Nesbitt Park,
 Rain Date, April 29

8:00 p.m., Glee Club Concert, King's College Gym
 9:00 p.m. to 1:00 a.m., Block Party - Outside
 Conyngham Hall, Wilkes College

SUNDAY, APRIL 23

8:00 a.m. March of Dimes Metric Walk '78
 Starting Point, Public Square
 10:00 a.m. to 6:00 p.m., Fine Arts Exhibition
 And Demonstrations, Stark Learning Center Courtyard,
 Wilkes College
 12 noon to 5:00 p.m., - Wilkes College Carnival
 South River Commons
 1:00 p.m. to 6:00 p.m. Bandshell Performances,
 North River
 1:00 p.m. to 6:00 p.m.
 Bandshell Performances, North River Commons
 1:00 p.m., - Stegmaier Band
 2:45 p.m. — King's College Lab Band
 4:15 p.m., - Bobby Baird Dixieland Band
 1:00 p.m. to 6:00 p.m., Tours of Wilkes College's
 Stark Learning Center
 3:30 p.m., Mozart's Mass K 427 and Haydn's Seasons,
 St. Stephen's Church, presented by
 Wyoming Valley Oratorio Society

APRIL 23-28— STUDENT ART EXHIBIT

by Reginald Fatherly and Val Kaplan
 Conyngham Art Gallery, Wilkes College
 Opening Reception, April 23, 8:30 p.m.

APRIL 24 - 30 — Eberhard Faber Art Display

First Eastern Bank

FRIDAY, APRIL 28

8:00 p.m., Gong Show,
 King's College Auditorium
 8:30 p.m., Voice Recital by Kathleen Herpich,
 Gies Recital Hall, Dorothy Dickson Dart Center
 for the Performing Arts

SATURDAY, APRIL 29

9:30 a.m. to 4:30 p.m. - AKC-Sanctioned
 Dog Match, Ralston Field
 10:00 a.m. to 4:00 p.m., Information Fair, Osterhout Library
 10:00 a.m. to 4:00 p.m. - "The Celebration: The Battle of Wyoming
 And Its Commemoration, 1778-1978" exhibit, Wyoming Historical
 and Geological Society Museum
 10:00 a.m. to 6:00 p.m., Fine Arts Exhibition
 And Demonstrations - Stark Learning Center Courtyard,
 Wilkes College
 11:00 a.m. to 3:00 p.m., YWCA Gymnastics Team Rehearsal, YWCA
 11:00 a.m. to 5:30 p.m., Third Annual Cherry Blossom
 Ruggerfest - Kirby Park, Final Trophy Game, 4:30 p.m.
 12 noon to 5:00 p.m., Double Deck Tour Bus Rides

2:00 to 6:00 p.m., Bluegrass Festival, North River Commons

2:00 p.m., Country Cuzzins
 3:30 p.m., Back Mountain String Band
 5:00 p.m., New Appalachia



8:30 p.m., Piano Recital by Kenneth McGraw,
 Gies Recital Hall, Dorothy Dickson Dart Center
 for the Performing Arts
 9:00 p.m. to midnight - King's College Dance,
 Regina Court - rain sight, Sheehy Student Center

SUNDAY, APRIL 30

10:00 a.m. to 6:00 p.m.
 Fine Arts Exhibition and Demonstrations
 Stark Learning Center Courtyard, Wilkes College

1:00 p.m., Ninth Annual River Regatta,

Pittston to Nesbitt Park
 - rain date, May 7



1:00 p.m., Wyoming Valley Model Airplane Club
 Demonstration, Kirby Park
 1:00 p.m. to 3:00 p.m., Crepes Suzettes Sale
 by King's College French Club
 King's College Administration Building
 1:00 p.m. to 4:00 p.m., "The Celebration: The Battle of Wyoming
 And Its Commemoration, 1778-1978" exhibit,
 Wyoming Historical and Geological Society Museum
 1:00 p.m. to 5:00 p.m., Antique Auto Show,
 First Eastern Bank Parking Lot



2:00 p.m., Fourth Annual
 Cherry Blossom Time Run
 Start and Finish, Courthouse Parking Lot

2:00 p.m. to 4:00 p.m., First Baptist Church,
 Open to Public
 2:30 p.m. to 3:00 p.m., Organ Recital
 by June George, First Baptist Church
 2:00 p.m. to 4:00 p.m., First Presbyterian Church,
 Open to Public
 3:00 p.m., Sing-Down with folk singer
 Linda Silvermann, South River Commons
 3:30 p.m., Piano Recital by Cynthia Stuccio
 Gies Hall Dorothy Dickson Dart Center
 for the Performing Arts
 8:00 p.m., Student Art Exhibit by Susan Adams,
 Opening reception Conyngham Art Gallery, Wilkes College
 8:00 p.m. to midnight Wilkes College Concert,
 Abilene, South Franklin St., Gym.